

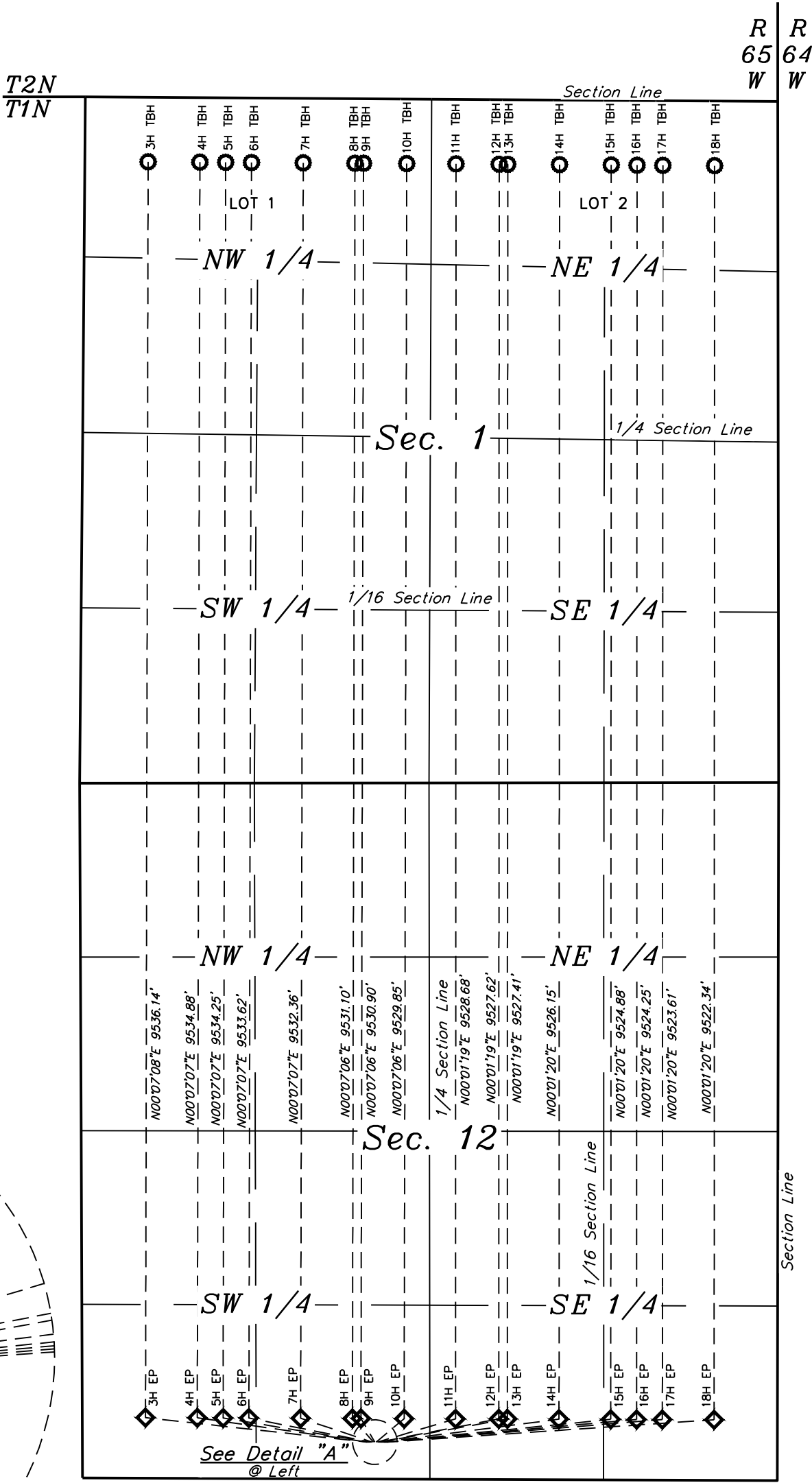
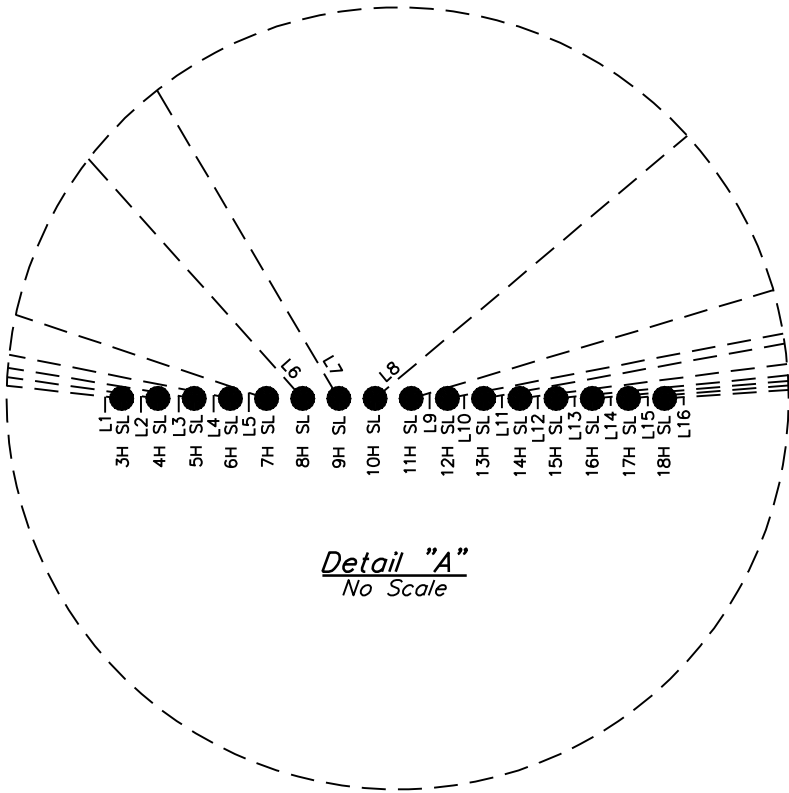


LEGEND:

- = WELLHEAD LOCATION.
- = TARGET BOTTOM HOLE.
- ◇ = ENTRY POINT.
- SL = SURFACE LOCATION.
- EP = ENTRY POINT.
- TBH = TARGET BOTTOM HOLE.



LINE TABLE		
LINE	DIRECTION	LENGTH
L1	N83°42'12"W	1692.17'
L2	N81°55'51"W	1311.94'
L3	N80°38'26"W	1127.96'
L4	N78°50'55"W	944.78'
L5	N71°34'01"W	573.35'
L6	N41°49'12"W	241.34'
L7	N30°31'40"W	208.52'
L8	N49°55'39"E	277.15'
L9	N73°22'01"E	618.35'
L10	N79°04'15"E	927.30'
L11	N79°41'36"E	981.31'
L12	N82°38'29"E	1359.68'
L13	N84°18'12"E	1740.07'
L14	N84°52'26"E	1925.17'
L15	N85°20'39"E	2110.44'
L16	N86°05'30"E	2492.27'



NOTES:

VERDAD RESOURCES LLC

WUERTZ 1201 PAD  
SE 1/4 SW 1/4, SECTION 12, T1N, R65W, 6th P.M.  
WELD COUNTY, COLORADO



UELS, LLC  
Corporate Office \* 85 South 200 East  
Vernal, UT 84078 \* (435) 789-1017

SURVEYED BY	JAMES FRESHWATER, O.R.	02-05-18	SCALE
DRAWN BY	K.B.	02-07-18	1" = 1000'
MULTI-WELL PLAN		FIGURE #5	