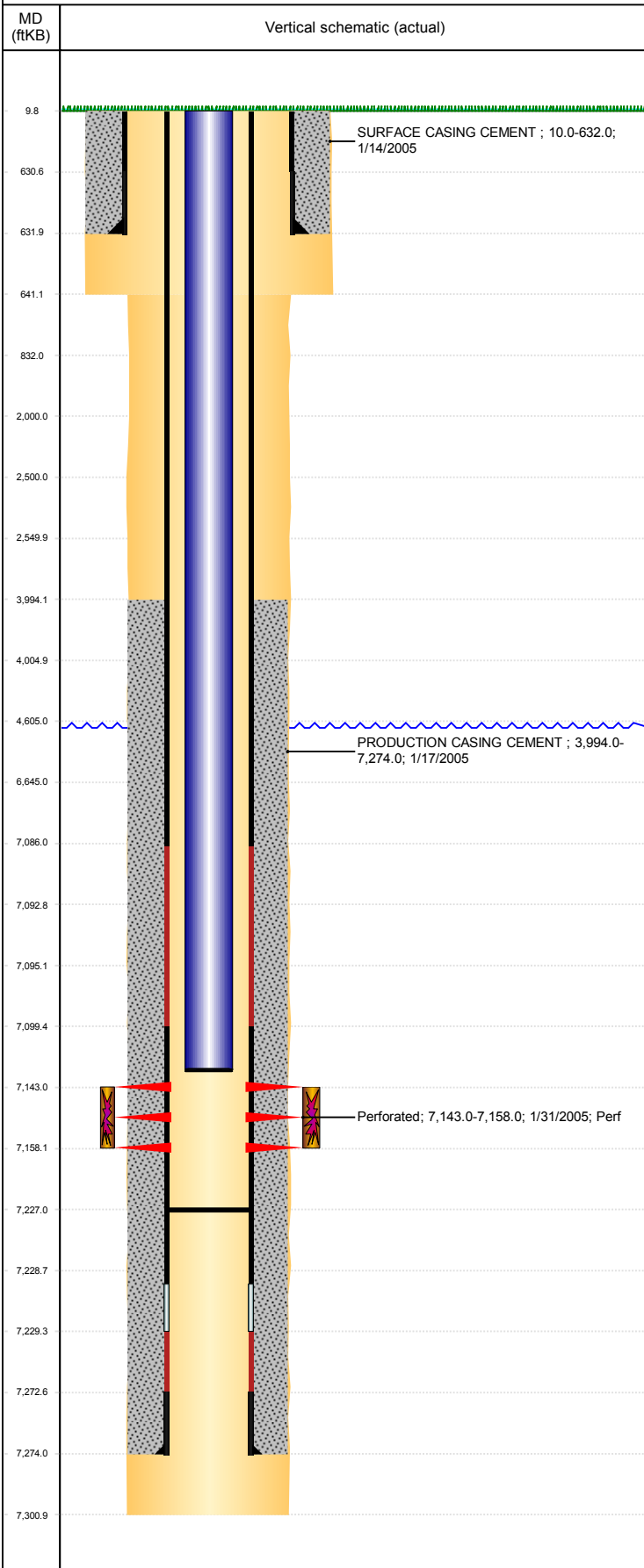


**Well Name: RITCHEY H27-04**

VERTICAL, ORIGINAL HOLE, 11/20/2018 11:24:02 AM



Well Header									
API 05-123-21906		Business Unit DJ BASIN			District 15		Well Config VERTICAL		
KB - GL / MSL (ft... 10.00		Spud Date 1/13/2005		P & A Date		Well Production Status SI		SoRT No	
Comment TD DISCREPANCY: DRL RPT & ST COMPLETION RPT = 7300, OPEN HOLE LOG - DEPTH LOGGER = 7301. STATE SHOWS SHUT IN SINCE OCT 2016.									
Surface Location (Congressional)									
Qtr 3 NW	Qtr 4 NW	Section 27	Twnshp 3	Twنش... N	Range 65	Rng E/... W	Actual Latitude (°) 40.20238044	Actual Longitude (°) -104.65754229	
Wellbore Sections									
Section Des			Size (in)			Act Top, MD (ftKB)		Act Btm, MD (ftKB)	
SURFACE			12 1/4			10		641	
PRODUCTION			7 7/8			641		7,301	
Casing Strings									
Csg Des		Run Date		OD (in)	Wt/Len (lb/ft)	Grade	Top, MD (ftKB)	MD (ftKB)	
Surface		1/14/2005		8 5/8	24.00	?	10.0	632.0	
Production		1/17/2005		4 1/2	11.60	M-80	10.0	7,274.0	
Cement									
Des				Start Date		Top (ftKB)		Btm (ftKB)	
SURFACE CASING CEMENT				1/14/2005		10.0		632.0	
PRODUCTION CASING CEMENT				1/17/2005		3,994.0		7,274.0	
Zone Statuses									
Zone Name		Status Date	Status	Fluid Type	Job			Prod Method	
CODELL		2/9/2010	PR	Water				Flowing	
CODELL		5/9/2017	SI						
Perforation Data									
Linked Zone		Bnch/Stg	Entered Shot Total		Top (ftKB)		Btm (ftKB)		Date
CODELL, ORIGINAL HOLE			60		7,143.00		7,158.00		1/31/2005
Stimulation Intervals									
Zone			Start Date			Top (ftKB)		Btm (ftKB)	
CODELL, ORIGINAL HOLE			2/7/2005			7,143.0		7,158.0	
Other In Hole									
Run Date		Des				OD (in)	Top (ftKB)	Btm (ftKB)	
Logs									
Date		Type				Top, MD (ftKB)		Btm, MD (ftKB)	
1/17/2005		COMPENSATED DENSITY				4,200.0		7,281.0	
1/17/2005		INDUCTION				631.0		7,301.0	
1/21/2005		CBL/CCL/GR				3,850.0		7,199.0	
7/24/2013		GYRO				10.0		7,100.0	
Plug Back Total Depths									
Date		Type		Com				Depth (ftKB)	
1/21/2005		FILL		DEPTH LOGGER FROM CBL				7,200.0	
8/16/2013		FILL		CLEAN OUT				7,227.0	