



410 17th Street, Suite 1400
Denver, CO 80202
(720) 440-6100 phone
(720) 305-0804 fax

Bonanzacrk.com

October 25, 2018

State of Colorado
Oil and Gas Conservation Commission
1120 Lincoln Street, Suite 801
Denver, CO 80203

RE: Proposed Wellbore Spacing Unit
Latham A11-E14-14HNB
Niobrara New Drill
NENE Section 14, Township 4N, Range 63W, 6th PM
Weld County, Colorado

Dear Director Murphy,

Bonanza Creek Energy Operating Company, LLC. ("Bonanza Creek") is planning to drill the above captioned well in accordance with the provisions of Colorado Oil and Gas Conservation Commission (COGCC) Rule 318A.e.

Bonanza Creek's proposed wellbore spacing unit consists of:

Township 4N, Range 63W (Weld County):
Section 14: W2W2
Section 15: E2E2
Section 11: SWSW
Section 10: SESE

Total acres: 400ac

The 30 day notification time period has passed and we have not yet received any objections to such well locations or proposed spacing unit, therefore Bonanza Creek hereby requests the Director to approve the above mentioned well. Bonanza Creek respectfully requests the COGCC review the enclosed map illustrating the proposed wellbore spacing unit.

Regards,
Bonanza Creek Energy Operating Company, LLC.

Brian Dodek, P.G.
Manager – Environmental & Regulatory Compliance

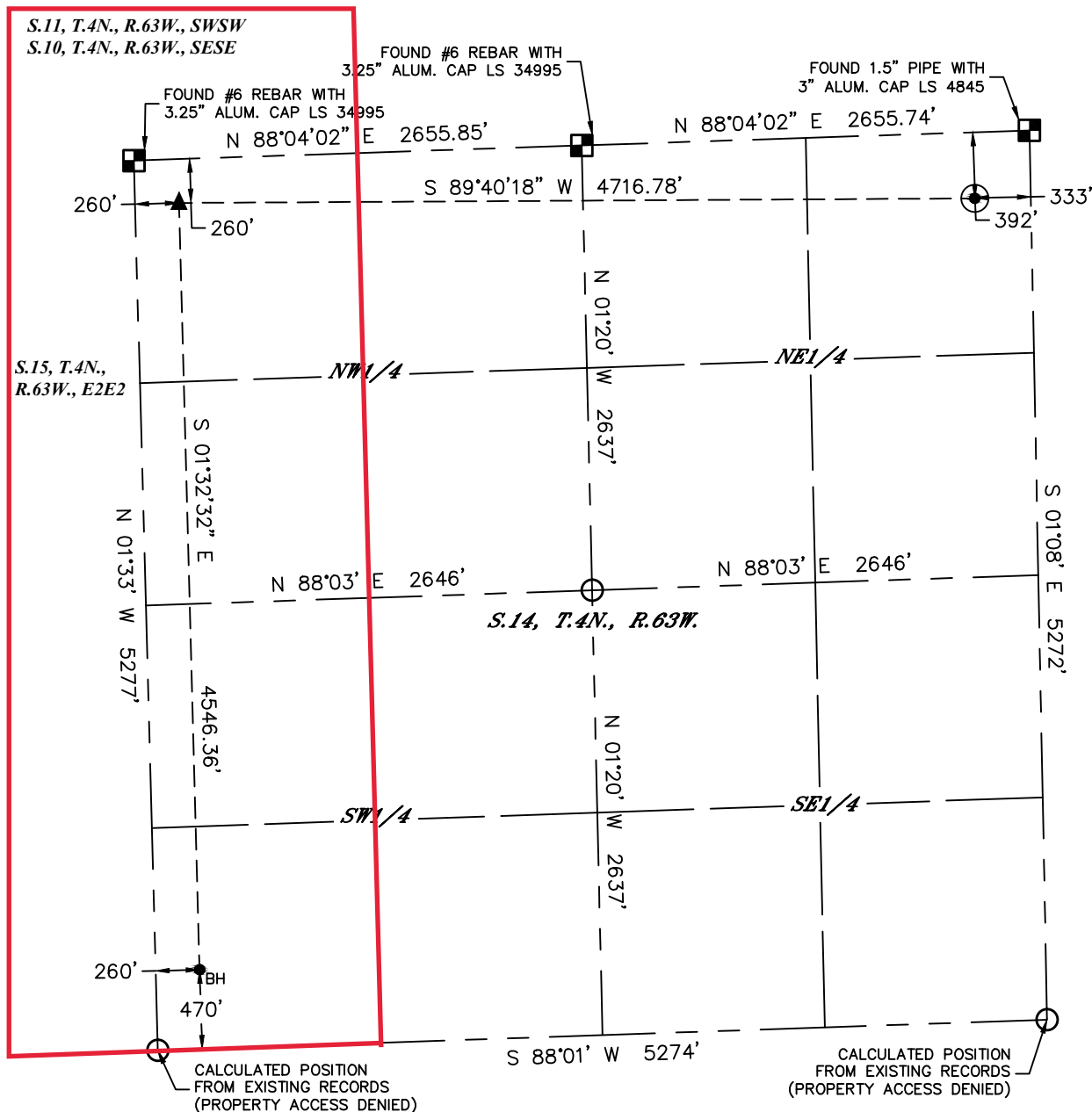


Lat40°, Inc. 6250 W. 10th Street, Unit 2, Greeley, CO 970-515-5294

WELL LOCATION CERTIFICATE

LATHAM A11-E14-14HNB

SECTION: 14
TOWNSHIP: 4N
RANGE: 63W
6TH. P.M.
WELD COUNTY, CO



CLIENT: BONANZA CREEK ENERGY						LANDMAN: JOSEPH SCHULTZ			
INSTRUMENT OPERATOR: CASEY KOHOUT						SURVEY DATE: 9/21/2018		SURFACE USE: RANGELAND	
SHL FOOTAGE				SHL LAT °	SHL LONG °	SHL PDOP	SHL ELEV (FT.)	SHL 1/4/1/4	SHL S-T-R
392	FNL	333	FEL	40.31893	-104.39706	1.9	4604	NENE	14-4-63

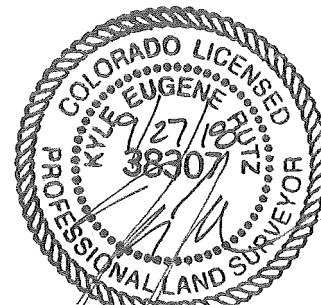
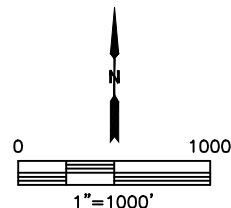
BHL FOOTAGE				BHL LAT °	BHL LONG °	BHL S-T-R	EP LAT °	EP LONG °	EP S-T-R
470	FSL	260	FWL	40.30654	-104.41373	14-4-63	40.31901	-104.41397	14-4-63

LEGEND

- = ALIQUOT MONUMENT AS DESCRIBED
- = CALCULATED POSITION
- = SURFACE HOLE LOCATION (SHL)
- ▲ = ENTRY POINT LOCATION (EP)
- ◆ = TOP OF PRODUCTION ZONE (TPZ)
- = BOTTOM HOLE LOCATION (BHL)

NOTE:

- 1) Bearings shown are Grid Bearings of the Colorado State Plane Coordinate System, North Zone, North American Datum 1983. The lineal dimensions as contained herein are based upon the "U.S. Survey Foot."
- 2) Distances to section lines measured at 90 degrees from said section lines.
- 3) Ground elevations are based on an observed GPS elevation (NAVD 1988 DATUM).
- 4) Latitude and Longitude shown are (NAD 83 DATUM).
- 5) IMPROVEMENTS: See LOCATION DRAWING for all visible improvements within 500' of oil and gas location.
- 6) This map does not represent a boundary survey.



Kyle E. Rutz—On behalf of Lat40°, Inc.
Colorado Licensed Professional Land Surveyor No. 38307
DATE: 9/27/2018
PROJECT#: 2018140