

BONANZA CREEK OIL COMPANY

Location: COLORADO Slot: SLOT#22 LATHAM 11-14-14HNC (377'FNL & 333'FEL, SEC.14)
Field: WELD COUNTY Well: LATHAM 11-14-14HNC
Facility: SEC.14-T4N-R63W Wellbore: LATHAM 11-14-14HNC PWB

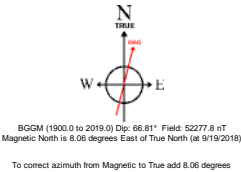
Plot reference wellpath is LATHAM 11-14-14HNC (REV-A.0) PWP	Grid System: NAD83 / Lambert Colorado SP, Northern Zone (501), US feet
True vertical depths are referenced to RIG (17) (RKB)	North Reference: True north
Measured depths are referenced to RIG (17) (RKB)	Scale: True distance
RIG (17) (RKB) to Mean Sea Level: 4620 feet	Depths are in feet
Mean Sea Level to Ground level (At Slot: SLOT#22 LATHAM 11-14-14HNC (377'FNL & 333'FEL, SEC.14)): 0 feet	Created by: doddanna on 2018-09-21
Coordinates are in feet referenced to Slot	Database: WellArchitectDB2

Location Information

Facility Name		Grid East (US ft)	Grid North (US ft)	Latitude	Longitude
SEC.14-T4N-R63W		3307689.092	1361141.238	40°19'10.121"N	104°23'47.454"W
Slot	Local N (ft)	Local E (ft)	Grid East (US ft)	Grid North (US ft)	Latitude
SLOT#22 LATHAM 11-14-14HNC (377'FNL & 333'FEL, SEC.14)	-186.29	-152.53	3307538.894	1360963.073	40°19'08.280"N
RIG (17) (RKB) to Ground level (At Slot: SLOT#22 LATHAM 11-14-14HNC (377'FNL & 333'FEL, SEC.14))				4620ft	
Mean Sea Level to Ground level (At Slot: SLOT#22 LATHAM 11-14-14HNC (377'FNL & 333'FEL, SEC.14))				0ft	
RIG (17) (RKB) to Mean Sea Level				4620ft	

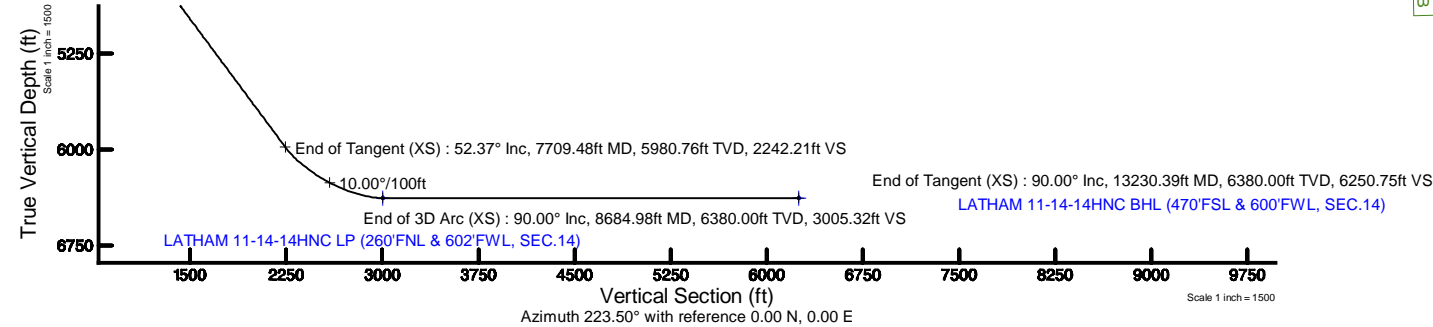
Survey Program

Start MD (ft)	End MD (ft)	Tool	Model	Log Name/Comment	Wellbore
17.00	1550.00	BHI NaviTrak	BHI NaviTrak (Rotating+Axial Corr)		LATHAM 11-14-14HNC PWB
1550.00	13230.39	BHI AutoTrak Curve	BHI AutoTrak Curve (Axial Corr, Short spacing)		LATHAM 11-14-14HNC PWB



BGGM (1900.0 to 2019.0) Dp: 66.81° Field: 52277.8 nT
Magnetic North is 8.06 degrees East of True North (at 9/19/2018)

To correct azimuth from Magnetic to True add 8.06 degrees

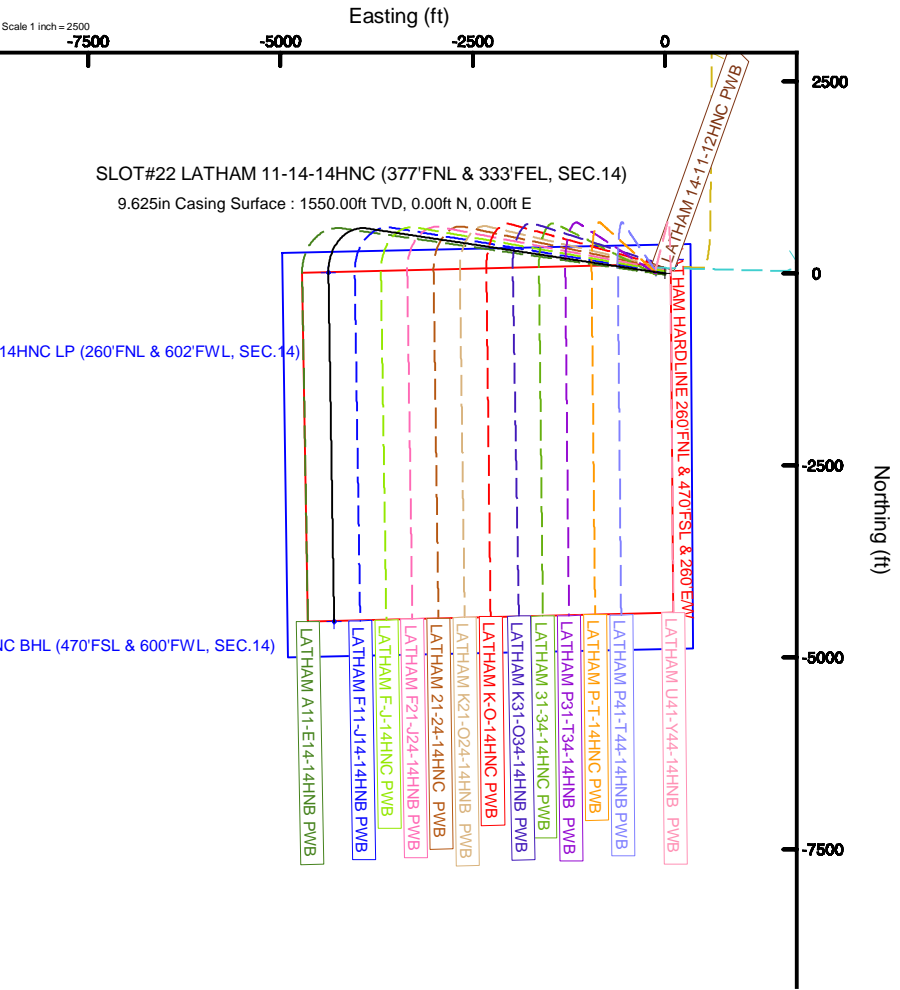


Well Profile Data

Design Comment	MD (ft)	Inc (°)	Az (°)	TVD (ft)	Local N (ft)	Local E (ft)	DLS (°/100ft)	VS (ft)
Tie On	17.00	0.000	278.615	17.00	0.00	0.00	0.00	0.00
End of Tangent	1550.00	0.000	278.615	1550.00	0.00	0.00	0.00	0.00
End of Build (XS)	4168.55	52.371	278.615	3818.86	167.12	-1103.12	2.00	638.16
End of Tangent (XS)	7709.48	52.371	278.615	5980.76	587.18	-3875.83	0.00	2242.21
End of 3D Arc (XS)	8684.98	90.000	179.065	6380.00	10.93	-4377.19	10.00	3005.32
End of Tangent (XS)	13230.39	90.000	179.065	6380.00	-4533.88	-4302.99	0.00	6250.75

Bottom Hole Location

MD (ft)	Inc (°)	Az (°)	TVD (ft)	Local N (ft)	Local E (ft)	Grid East (US ft)	Grid North (US ft)	Latitude	Longitude
13230.39	90.000	179.065	6380.00	-4533.88	-4302.99	3303292.81	1356366.23	40°18'23.474"N	104°24'44.964"W



Planned Wellpath Report

LATHAM 11-14-14HNC (REV-A.0) PWP

Page 1 of 7



REFERENCE WELLPATH IDENTIFICATION

Operator	BONANZA CREEK OIL COMPANY	Slot	SLOT#22 LATHAM 11-14-14HNC (377'FNL & 333'FEL, SEC.14)
Area	COLORADO	Well	LATHAM 11-14-14HNC
Field	WELD COUNTY	Wellbore	LATHAM 11-14-14HNC PWB
Facility	SEC.14-T4N-R63W		

REPORT SETUP INFORMATION

Projection System	NAD83 / Lambert Colorado SP, Northern Zone (501), US feet	Software System	WellArchitect® 5.1
North Reference	True	User	Doddanna
Scale	0.999958	Report Generated	9/20/2018 at 5:44:57 PM
Convergence at slot	0.71° East	Database/Source file	WellArchitectDB2/LATHAM_11-14-14HNC__REV-A.0__PWP.xml

WELLPATH LOCATION

	Local coordinates		Grid coordinates		Geographic coordinates	
	North[ft]	East[ft]	Easting[US ft]	Northing[US ft]	Latitude	Longitude
Slot Location	-186.29	-152.53	3307538.89	1360953.07	40°19'08.280"N	104°23'49.423"W
Facility Reference Pt			3307689.09	1361141.24	40°19'10.121"N	104°23'47.454"W
Field Reference Pt			3224525.77	1254425.87	40°01'44.400"N	104°41'53.556"W

WELLPATH DATUM

Calculation method	Minimum curvature	RIG (17') (RKB) to Facility Vertical Datum	4620.00ft
Horizontal Reference Pt	Slot	RIG (17') (RKB) to Mean Sea Level	4620.00ft
Vertical Reference Pt	RIG (17') (RKB)	RIG (17') (RKB) to Ground Level at Slot (SLOT#22 LATHAM 11-14-14HNC (377'FNL & 333'FEL, SEC.14))	4620.00ft
MD Reference Pt	RIG (17') (RKB)	Section Origin	N 0.00, E 0.00 ft
Field Vertical Reference	Mean Sea Level	Section Azimuth	223.50°

Planned Wellpath Report

LATHAM 11-14-14HNC (REV-A.0) PWP

Page 2 of 7



REFERENCE WELLPATH IDENTIFICATION

Operator	BONANZA CREEK OIL COMPANY	Slot	SLOT#22 LATHAM 11-14-14HNC (377'FNL & 333'FEL, SEC.14)
Area	COLORADO	Well	LATHAM 11-14-14HNC
Field	WELD COUNTY	Wellbore	LATHAM 11-14-14HNC PWB
Facility	SEC.14-T4N-R63W		

WELLPATH DATA (139 stations) † = interpolated/extrapolated station

MD [ft]	Inclination [°]	Azimuth [°]	TVD [ft]	Vert Sect [ft]	North [ft]	East [ft]	DLS [°/100ft]	Comments
0.00†	0.000	278.615	0.00	0.00	0.00	0.00	0.00	
17.00	0.000	278.615	17.00	0.00	0.00	0.00	0.00	Tie On
117.00†	0.000	278.615	117.00	0.00	0.00	0.00	0.00	
217.00†	0.000	278.615	217.00	0.00	0.00	0.00	0.00	
317.00†	0.000	278.615	317.00	0.00	0.00	0.00	0.00	
417.00†	0.000	278.615	417.00	0.00	0.00	0.00	0.00	
517.00†	0.000	278.615	517.00	0.00	0.00	0.00	0.00	
617.00†	0.000	278.615	617.00	0.00	0.00	0.00	0.00	
717.00†	0.000	278.615	717.00	0.00	0.00	0.00	0.00	
817.00†	0.000	278.615	817.00	0.00	0.00	0.00	0.00	
917.00†	0.000	278.615	917.00	0.00	0.00	0.00	0.00	
1017.00†	0.000	278.615	1017.00	0.00	0.00	0.00	0.00	
1117.00†	0.000	278.615	1117.00	0.00	0.00	0.00	0.00	
1217.00†	0.000	278.615	1217.00	0.00	0.00	0.00	0.00	
1317.00†	0.000	278.615	1317.00	0.00	0.00	0.00	0.00	
1417.00†	0.000	278.615	1417.00	0.00	0.00	0.00	0.00	
1517.00†	0.000	278.615	1517.00	0.00	0.00	0.00	0.00	
1550.00	0.000	278.615	1550.00	0.00	0.00	0.00	0.00	End of Tangent
1617.00†	1.340	278.615	1616.99	0.45	0.12	-0.77	2.00	
1717.00†	3.340	278.615	1716.91	2.78	0.73	-4.81	2.00	
1817.00†	5.340	278.615	1816.61	7.11	1.86	-12.29	2.00	
1917.00†	7.340	278.615	1916.00	13.43	3.52	-23.21	2.00	
2017.00†	9.340	278.615	2014.93	21.72	5.69	-37.55	2.00	
2117.00†	11.340	278.615	2113.31	31.99	8.38	-55.30	2.00	
2217.00†	13.340	278.615	2210.99	44.21	11.58	-76.43	2.00	
2317.00†	15.340	278.615	2307.87	58.38	15.29	-100.91	2.00	
2417.00†	17.340	278.615	2403.83	74.47	19.50	-128.73	2.00	
2517.00†	19.340	278.615	2498.74	92.47	24.21	-159.84	2.00	
2617.00†	21.340	278.615	2592.50	112.35	29.42	-194.20	2.00	
2717.00†	23.340	278.615	2684.99	134.09	35.11	-231.78	2.00	

Planned Wellpath Report

LATHAM 11-14-14HNC (REV-A.0) PWP

Page 3 of 7



REFERENCE WELLPATH IDENTIFICATION

Operator	BONANZA CREEK OIL COMPANY	Slot	SLOT#22 LATHAM 11-14-14HNC (377'FNL & 333'FEL, SEC.14)
Area	COLORADO	Well	LATHAM 11-14-14HNC
Field	WELD COUNTY	Wellbore	LATHAM 11-14-14HNC PWB
Facility	SEC.14-T4N-R63W		

WELLPATH DATA (139 stations) † = interpolated/extrapolated station

MD [ft]	Inclination [°]	Azimuth [°]	TVD [ft]	Vert Sect [ft]	North [ft]	East [ft]	DLS [°/100ft]	Comments
2817.00†	25.340	278.615	2776.10	157.66	41.29	-272.53	2.00	
2917.00†	27.340	278.615	2865.71	183.04	47.93	-316.40	2.00	
3017.00†	29.340	278.615	2953.72	210.19	55.04	-363.33	2.00	
3117.00†	31.340	278.615	3040.02	239.08	62.61	-413.27	2.00	
3217.00†	33.340	278.615	3124.51	269.68	70.62	-466.16	2.00	
3317.00†	35.340	278.615	3207.07	301.94	79.07	-521.93	2.00	
3417.00†	37.340	278.615	3287.62	335.83	87.95	-580.51	2.00	
3517.00†	39.340	278.615	3366.05	371.31	97.24	-641.84	2.00	
3617.00†	41.340	278.615	3442.27	408.34	106.93	-705.84	2.00	
3717.00†	43.340	278.615	3516.18	446.86	117.02	-772.43	2.00	
3817.00†	45.340	278.615	3587.70	486.83	127.49	-841.53	2.00	
3917.00†	47.340	278.615	3656.73	528.21	138.33	-913.06	2.00	
4017.00†	49.340	278.615	3723.20	570.94	149.52	-986.92	2.00	
4117.00†	51.340	278.615	3787.02	614.98	161.05	-1063.03	2.00	
4168.55	52.371	278.615	3818.86	638.16	167.12	-1103.12	2.00	End of Build (XS)
4217.00†	52.371	278.615	3848.44	660.11	172.87	-1141.05	0.00	
4317.00†	52.371	278.615	3909.49	705.41	184.73	-1219.36	0.00	
4417.00†	52.371	278.615	3970.55	750.71	196.59	-1297.66	0.00	
4517.00†	52.371	278.615	4031.60	796.01	208.46	-1375.97	0.00	
4617.00†	52.371	278.615	4092.66	841.31	220.32	-1454.27	0.00	
4717.00†	52.371	278.615	4153.71	886.61	232.18	-1532.58	0.00	
4817.00†	52.371	278.615	4214.77	931.91	244.04	-1610.88	0.00	
4917.00†	52.371	278.615	4275.82	977.21	255.91	-1689.19	0.00	
5017.00†	52.371	278.615	4336.88	1022.51	267.77	-1767.49	0.00	
5117.00†	52.371	278.615	4397.93	1067.81	279.63	-1845.80	0.00	
5217.00†	52.371	278.615	4458.98	1113.11	291.50	-1924.10	0.00	
5317.00†	52.371	278.615	4520.04	1158.41	303.36	-2002.41	0.00	
5417.00†	52.371	278.615	4581.09	1203.71	315.22	-2080.71	0.00	
5517.00†	52.371	278.615	4642.15	1249.01	327.09	-2159.01	0.00	
5617.00†	52.371	278.615	4703.20	1294.31	338.95	-2237.32	0.00	

Planned Wellpath Report

LATHAM 11-14-14HNC (REV-A.0) PWP

Page 4 of 7



REFERENCE WELLPATH IDENTIFICATION

Operator	BONANZA CREEK OIL COMPANY	Slot	SLOT#22 LATHAM 11-14-14HNC (377'FNL & 333'FEL, SEC.14)
Area	COLORADO	Well	LATHAM 11-14-14HNC
Field	WELD COUNTY	Wellbore	LATHAM 11-14-14HNC PWB
Facility	SEC.14-T4N-R63W		

WELLPATH DATA (139 stations) † = interpolated/extrapolated station

MD [ft]	Inclination [°]	Azimuth [°]	TVD [ft]	Vert Sect [ft]	North [ft]	East [ft]	DLS [°/100ft]	Comments
5717.00†	52.371	278.615	4764.26	1339.61	350.81	-2315.62	0.00	
5817.00†	52.371	278.615	4825.31	1384.91	362.67	-2393.93	0.00	
5917.00†	52.371	278.615	4886.37	1430.21	374.54	-2472.23	0.00	
6017.00†	52.371	278.615	4947.42	1475.51	386.40	-2550.54	0.00	
6117.00†	52.371	278.615	5008.48	1520.81	398.26	-2628.84	0.00	
6217.00†	52.371	278.615	5069.53	1566.11	410.13	-2707.15	0.00	
6317.00†	52.371	278.615	5130.58	1611.41	421.99	-2785.45	0.00	
6417.00†	52.371	278.615	5191.64	1656.71	433.85	-2863.76	0.00	
6517.00†	52.371	278.615	5252.69	1702.01	445.71	-2942.06	0.00	
6617.00†	52.371	278.615	5313.75	1747.31	457.58	-3020.36	0.00	
6717.00†	52.371	278.615	5374.80	1792.61	469.44	-3098.67	0.00	
6817.00†	52.371	278.615	5435.86	1837.91	481.30	-3176.97	0.00	
6917.00†	52.371	278.615	5496.91	1883.21	493.17	-3255.28	0.00	
7017.00†	52.371	278.615	5557.97	1928.51	505.03	-3333.58	0.00	
7117.00†	52.371	278.615	5619.02	1973.81	516.89	-3411.89	0.00	
7217.00†	52.371	278.615	5680.08	2019.11	528.76	-3490.19	0.00	
7317.00†	52.371	278.615	5741.13	2064.41	540.62	-3568.50	0.00	
7417.00†	52.371	278.615	5802.19	2109.71	552.48	-3646.80	0.00	
7517.00†	52.371	278.615	5863.24	2155.01	564.34	-3725.11	0.00	
7617.00†	52.371	278.615	5924.29	2200.31	576.21	-3803.41	0.00	
7709.48	52.371	278.615	5980.76	2242.21	587.18	-3875.83	0.00	End of Tangent (XS)
7717.00†	52.298	277.669	5985.35	2245.65	588.02	-3881.72	10.00	
7817.00†	52.054	265.003	6046.83	2298.48	589.87	-3960.40	10.00	
7917.00†	53.158	252.484	6107.71	2363.18	574.35	-4038.04	10.00	
8017.00†	55.523	240.515	6166.15	2437.78	541.94	-4112.27	10.00	
8117.00†	58.980	229.349	6220.35	2520.03	493.62	-4180.83	10.00	
8217.00†	63.324	219.058	6268.69	2607.43	430.85	-4241.65	10.00	
8317.00†	68.351	209.577	6309.69	2697.30	355.55	-4292.87	10.00	
8417.00†	73.879	200.764	6342.10	2786.94	270.00	-4332.94	10.00	
8517.00†	79.747	192.443	6364.94	2873.61	176.80	-4360.64	10.00	

Planned Wellpath Report

LATHAM 11-14-14HNC (REV-A.0) PWP

Page 5 of 7



REFERENCE WELLPATH IDENTIFICATION

Operator	BONANZA CREEK OIL COMPANY	Slot	SLOT#22 LATHAM 11-14-14HNC (377'FNL & 333'FEL, SEC.14)
Area	COLORADO	Well	LATHAM 11-14-14HNC
Field	WELD COUNTY	Wellbore	LATHAM 11-14-14HNC PWB
Facility	SEC.14-T4N-R63W		

WELLPATH DATA (139 stations) † = interpolated/extrapolated station

MD [ft]	Inclination [°]	Azimuth [°]	TVD [ft]	Vert Sect [ft]	North [ft]	East [ft]	DLS [°/100ft]	Comments
8617.00†	85.819	184.430	6377.52	2954.67	78.79	-4375.13	10.00	
8684.98	90.000	179.065	6380.00†	3005.32	10.93	-4377.19	10.00	End of 3D Arc (XS)
8717.00†	90.000	179.065	6380.00	3028.18	-21.09	-4376.67	0.00	
8817.00†	90.000	179.065	6380.00	3099.58	-121.07	-4375.04	0.00	
8917.00†	90.000	179.065	6380.00	3170.98	-221.06	-4373.41	0.00	
9017.00†	90.000	179.065	6380.00	3242.38	-321.05	-4371.77	0.00	
9117.00†	90.000	179.065	6380.00	3313.78	-421.03	-4370.14	0.00	
9217.00†	90.000	179.065	6380.00	3385.18	-521.02	-4368.51	0.00	
9317.00†	90.000	179.065	6380.00	3456.58	-621.01	-4366.88	0.00	
9417.00†	90.000	179.065	6380.00	3527.98	-720.99	-4365.24	0.00	
9517.00†	90.000	179.065	6380.00	3599.38	-820.98	-4363.61	0.00	
9617.00†	90.000	179.065	6380.00	3670.78	-920.97	-4361.98	0.00	
9717.00†	90.000	179.065	6380.00	3742.18	-1020.95	-4360.35	0.00	
9817.00†	90.000	179.065	6380.00	3813.58	-1120.94	-4358.72	0.00	
9917.00†	90.000	179.065	6380.00	3884.98	-1220.93	-4357.08	0.00	
10017.00†	90.000	179.065	6380.00	3956.38	-1320.91	-4355.45	0.00	
10117.00†	90.000	179.065	6380.00	4027.78	-1420.90	-4353.82	0.00	
10217.00†	90.000	179.065	6380.00	4099.18	-1520.89	-4352.19	0.00	
10317.00†	90.000	179.065	6380.00	4170.58	-1620.87	-4350.55	0.00	
10417.00†	90.000	179.065	6380.00	4241.98	-1720.86	-4348.92	0.00	
10517.00†	90.000	179.065	6380.00	4313.38	-1820.85	-4347.29	0.00	
10617.00†	90.000	179.065	6380.00	4384.78	-1920.83	-4345.66	0.00	
10717.00†	90.000	179.065	6380.00	4456.18	-2020.82	-4344.02	0.00	
10817.00†	90.000	179.065	6380.00	4527.58	-2120.81	-4342.39	0.00	
10917.00†	90.000	179.065	6380.00	4598.98	-2220.79	-4340.76	0.00	
11017.00†	90.000	179.065	6380.00	4670.38	-2320.78	-4339.13	0.00	
11117.00†	90.000	179.065	6380.00	4741.78	-2420.77	-4337.49	0.00	
11217.00†	90.000	179.065	6380.00	4813.18	-2520.75	-4335.86	0.00	
11317.00†	90.000	179.065	6380.00	4884.58	-2620.74	-4334.23	0.00	
11417.00†	90.000	179.065	6380.00	4955.98	-2720.73	-4332.60	0.00	

Planned Wellpath Report

LATHAM 11-14-14HNC (REV-A.0) PWP

Page 6 of 7



REFERENCE WELLPATH IDENTIFICATION			
Operator	BONANZA CREEK OIL COMPANY	Slot	SLOT#22 LATHAM 11-14-14HNC (377'FNL & 333'FEL, SEC.14)
Area	COLORADO	Well	LATHAM 11-14-14HNC
Field	WELD COUNTY	Wellbore	LATHAM 11-14-14HNC PWB
Facility	SEC.14-T4N-R63W		

WELLPATH DATA (139 stations) † = interpolated/extrapolated station

MD [ft]	Inclination [°]	Azimuth [°]	TVD [ft]	Vert Sect [ft]	North [ft]	East [ft]	DLS [°/100ft]	Comments
11517.00†	90.000	179.065	6380.00	5027.38	-2820.71	-4330.96	0.00	
11617.00†	90.000	179.065	6380.00	5098.78	-2920.70	-4329.33	0.00	
11717.00†	90.000	179.065	6380.00	5170.18	-3020.69	-4327.70	0.00	
11817.00†	90.000	179.065	6380.00	5241.58	-3120.67	-4326.07	0.00	
11917.00†	90.000	179.065	6380.00	5312.98	-3220.66	-4324.43	0.00	
12017.00†	90.000	179.065	6380.00	5384.38	-3320.65	-4322.80	0.00	
12117.00†	90.000	179.065	6380.00	5455.78	-3420.63	-4321.17	0.00	
12217.00†	90.000	179.065	6380.00	5527.18	-3520.62	-4319.54	0.00	
12317.00†	90.000	179.065	6380.00	5598.58	-3620.61	-4317.90	0.00	
12417.00†	90.000	179.065	6380.00	5669.98	-3720.59	-4316.27	0.00	
12517.00†	90.000	179.065	6380.00	5741.38	-3820.58	-4314.64	0.00	
12617.00†	90.000	179.065	6380.00	5812.78	-3920.57	-4313.01	0.00	
12717.00†	90.000	179.065	6380.00	5884.18	-4020.55	-4311.38	0.00	
12817.00†	90.000	179.065	6380.00	5955.58	-4120.54	-4309.74	0.00	
12917.00†	90.000	179.065	6380.00	6026.98	-4220.53	-4308.11	0.00	
13017.00†	90.000	179.065	6380.00	6098.38	-4320.51	-4306.48	0.00	
13117.00†	90.000	179.065	6380.00	6169.78	-4420.50	-4304.85	0.00	
13217.00†	90.000	179.065	6380.00	6241.18	-4520.49	-4303.21	0.00	
13230.39	90.000	179.065	6380.00 ²	6250.75	-4533.88	-4302.99	0.00	End of Tangent (XS)

HOLE & CASING SECTIONS - Ref Wellbore: LATHAM 11-14-14HNC PWB Ref Wellpath: LATHAM 11-14-14HNC (REV-A.0) PWP

String/Diameter	Start MD [ft]	End MD [ft]	Interval [ft]	Start TVD [ft]	End TVD [ft]	Start N/S [ft]	Start E/W [ft]	End N/S [ft]	End E/W [ft]
9.625in Casing Surface	17.00	1550.00	1533.00	17.00	1550.00	0.00	0.00	0.00	0.00

Planned Wellpath Report

LATHAM 11-14-14HNC (REV-A.0) PWP

Page 7 of 7



REFERENCE WELLPATH IDENTIFICATION			
Operator	BONANZA CREEK OIL COMPANY	Slot	SLOT#22 LATHAM 11-14-14HNC (377'FNL & 333'FEL, SEC.14)
Area	COLORADO	Well	LATHAM 11-14-14HNC
Field	WELD COUNTY	Wellbore	LATHAM 11-14-14HNC PWB
Facility	SEC.14-T4N-R63W		

TARGETS									
Name	MD [ft]	TVD [ft]	North [ft]	East [ft]	Grid East [US ft]	Grid North [US ft]	Latitude	Longitude	Shape
LATHAM SECTION 14		-1.00	186.27	152.53	3307689.09	1361141.22	40°19'10.121"N	104°23'47.454"W	polygon
2) LATHAM 11-14-14HNC BHL (470'FSL & 600'FWL, SEC.14)	13230.39	6380.00	-4533.88	-4302.99	3303292.81	1356366.23	40°18'23.474"N	104°24'44.964"W	point
1) LATHAM 11-14-14HNC LP (260'FNL & 602'FWL, SEC.14)	8684.98	6380.00	10.93	-4377.19	3303162.10	1360909.56	40°19'08.384"N	104°24'45.932"W	point
LATHAM HARDLINE 260'FNL & 470'FSL & 260'E/W		6385.00	60.10	-119.97	3307418.19	1361011.67	40°19'08.874"N	104°23'50.972"W	polygon

SURVEY PROGRAM - Ref Wellbore: LATHAM 11-14-14HNC PWB Ref Wellpath: LATHAM 11-14-14HNC (REV-A.0) PWP				
Start MD [ft]	End MD [ft]	Positional Uncertainty Model	Log Name/Comment	Wellbore
17.00	1550.00	BHI NaviTrak (Rotating+Axial Corr)		LATHAM 11-14-14HNC PWB
1550.00	13230.39	BHI AutoTrak Curve (Axial Corr, Short spacing)		LATHAM 11-14-14HNC PWB