

BONANZA CREEK OIL COMPANY

Location: COLORADO Slot: SLOT#21 LATHAM F11-J14-14HNB (362°FNL & 333°FEL, SEC.14)
Field: WELD COUNTY Well: LATHAM F11-J14-14HNB
Facility: SEC.14-T4N-R63W Wellbore: LATHAM F11-J14-14HNB PWB

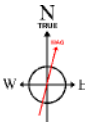
Plot reference wellpath is LATHAM F11-J14-14HNB (REV-A.0) PWP	Grid System: NAD83 / Lambert Colorado SP, Northern Zone (501), US feet
True vertical depths are referenced to RIG (17) (RKB)	North Reference: True north
Measured depths are referenced to RIG (17) (RKB)	Scale: True distance
RIG (17) (RKB) to Mean Sea Level: 4620 feet	Depths are in feet
Mean Sea Level to Ground level (At Slot: SLOT#21 LATHAM F11-J14-14HNB (362°FNL & 333°FEL, SEC.14)): 0 feet	Created by: doddania on 2018-09-21
Coordinates are in feet referenced to Slot	Database: WellArchitectIDB2

Location Information

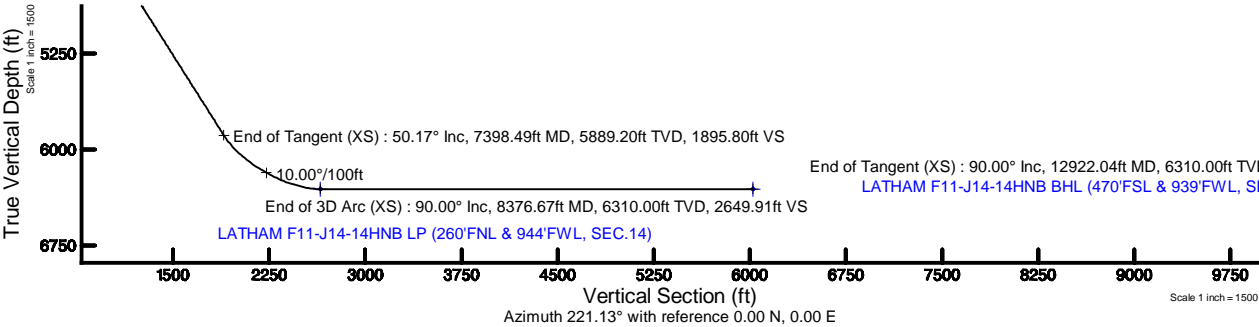
Facility Name			Grid East (US ft)	Grid North (US ft)	Latitude	Longitude
SEC.14-T4N-R63W			3307689.092	1361141.238	40°19'10.121"N	104°23'47.454"W
Slot	Local N (ft)	Local E (ft)	Grid East (US ft)	Grid North (US ft)	Latitude	Longitude
SLOT#21 LATHAM F11-J14-14HNB (362°FNL & 333°FEL, SEC.14)	-171.28	-152.51	3307538.735	1360968.081	40°19'08.428"N	104°23'49.423"W
RIG (17) (RKB) to Ground level (At Slot: SLOT#21 LATHAM F11-J14-14HNB (362°FNL & 333°FEL, SEC.14))					4620ft	
Mean Sea Level to Ground level (At Slot: SLOT#21 LATHAM F11-J14-14HNB (362°FNL & 333°FEL, SEC.14))					0ft	
RIG (17) (RKB) to Mean Sea Level					4620ft	

Survey Program

Start MD (ft)	End MD (ft)	Tool	Model	Log Name/Comment	Wellbore
17.00	1550.00	BHI NaviTrak	BHI NaviTrak (Rotating+Axial Corr)		LATHAM F11-J14-14HNB PWB
1550.00	12922.04	BHI AutoTrak Curve	BHI AutoTrak Curve (Axial Corr, Short spacing)		LATHAM F11-J14-14HNB PWB



BGGM (1900.0 to 2019.0) Dp: 66.81° Field: 52277.8 nT
Magnetic North is 6.06 degrees East of True North (at 9/19/2018)
To correct azimuth from Magnetic to True add 6.06 degrees

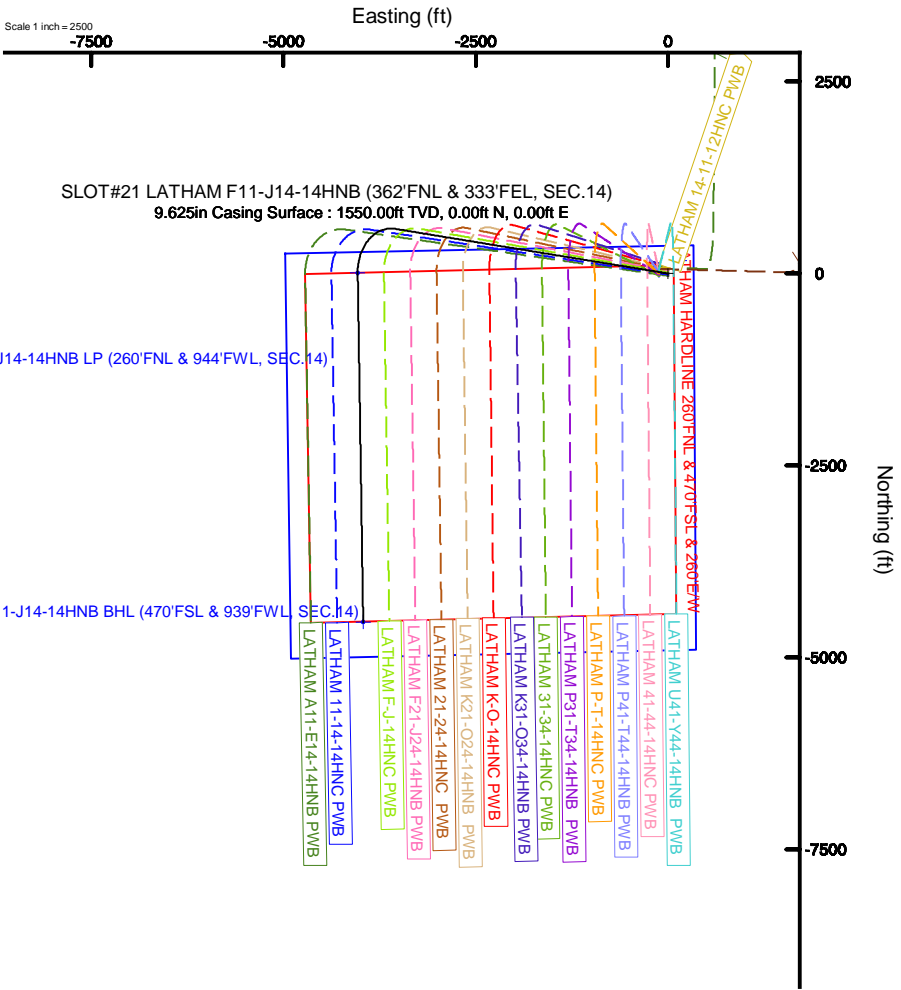


Well Profile Data

Design Comment	MD (ft)	Inc (°)	Az (°)	TVD (ft)	Local N (ft)	Local E (ft)	DLS (°/100ft)	VS (ft)
Tie On	17.00	0.000	279.305	17.00	0.00	0.00	0.00	0.00
End of Tangent	1550.00	0.000	279.305	1550.00	0.00	0.00	0.00	0.00
End of Build (XS)	4058.62	50.172	279.305	3750.09	166.53	-1016.40	2.00	543.16
End of Tangent (XS)	7398.49	50.172	279.305	5889.20	581.26	-3547.59	0.00	1895.80
End of 3D Arc (XS)	8376.67	90.000	179.102	6310.00	5.92	-4035.22	10.00	2649.91
End of Tangent (XS)	12922.04	90.000	179.102	6310.00	-4538.89	-3964.02	0.00	6026.19

Bottom Hole Location

MD (ft)	Inc (°)	Az (°)	TVD (ft)	Local N (ft)	Local E (ft)	Grid East (US ft)	Grid North (US ft)	Latitude	Longitude
12922.04	90.000	179.102	6310.00	-4538.89	-3964.02	3303631.65	1356380.44	40°18'23.573"N	104°24'40.589"W



End of Tangent (XS) : 90.00° Inc, 12922.04ft MD, 6310.00ft TVD, 6026.19ft VS
LATHAM F11-J14-14HNB BHL (470°FSL & 939°FWL, SEC.14)

Planned Wellpath Report

LATHAM F11-J14-14HNB (REV-A.0) PWP

Page 1 of 7



REFERENCE WELLPATH IDENTIFICATION

Operator	BONANZA CREEK OIL COMPANY	Slot	SLOT#21 LATHAM F11-J14-14HNB (362'FNL & 333'FEL, SEC.14)
Area	COLORADO	Well	LATHAM F11-J14-14HNB
Field	WELD COUNTY	Wellbore	LATHAM F11-J14-14HNB PWB
Facility	SEC.14-T4N-R63W		

REPORT SETUP INFORMATION

Projection System	NAD83 / Lambert Colorado SP, Northern Zone (501), US feet	Software System	WellArchitect® 5.1
North Reference	True	User	Doddanna
Scale	0.999958	Report Generated	9/20/2018 at 5:45:09 PM
Convergence at slot	0.71° East	Database/Source file	WellArchitectDB2/LATHAM_F11-J14-14HNB__REV-A.0__PWP.xml

WELLPATH LOCATION

	Local coordinates		Grid coordinates		Geographic coordinates	
	North[ft]	East[ft]	Easting[US ft]	Northing[US ft]	Latitude	Longitude
Slot Location	-171.28	-152.51	3307538.74	1360968.08	40°19'08.428"N	104°23'49.423"W
Facility Reference Pt			3307689.09	1361141.24	40°19'10.121"N	104°23'47.454"W
Field Reference Pt			3224525.77	1254425.87	40°01'44.400"N	104°41'53.556"W

WELLPATH DATUM

Calculation method	Minimum curvature	RIG (17') (RKB) to Facility Vertical Datum	4620.00ft
Horizontal Reference Pt	Slot	RIG (17') (RKB) to Mean Sea Level	4620.00ft
Vertical Reference Pt	RIG (17') (RKB)	RIG (17') (RKB) to Ground Level at Slot (SLOT#21 LATHAM F11-J14-14HNB (362'FNL & 333'FEL, SEC.14))	4620.00ft
MD Reference Pt	RIG (17') (RKB)	Section Origin	N 0.00, E 0.00 ft
Field Vertical Reference	Mean Sea Level	Section Azimuth	221.13°

Planned Wellpath Report

LATHAM F11-J14-14HNB (REV-A.0) PWP

Page 2 of 7



REFERENCE WELLPATH IDENTIFICATION			
Operator	BONANZA CREEK OIL COMPANY	Slot	SLOT#21 LATHAM F11-J14-14HNB (362'FNL & 333'FEL, SEC.14)
Area	COLORADO	Well	LATHAM F11-J14-14HNB
Field	WELD COUNTY	Wellbore	LATHAM F11-J14-14HNB PWB
Facility	SEC.14-T4N-R63W		

WELLPATH DATA (136 stations) † = interpolated/extrapolated station

MD [ft]	Inclination [°]	Azimuth [°]	TVD [ft]	Vert Sect [ft]	North [ft]	East [ft]	DLS [°/100ft]	Comments
0.00†	0.000	279.305	0.00	0.00	0.00	0.00	0.00	
17.00	0.000	279.305	17.00	0.00	0.00	0.00	0.00	Tie On
117.00†	0.000	279.305	117.00	0.00	0.00	0.00	0.00	
217.00†	0.000	279.305	217.00	0.00	0.00	0.00	0.00	
317.00†	0.000	279.305	317.00	0.00	0.00	0.00	0.00	
417.00†	0.000	279.305	417.00	0.00	0.00	0.00	0.00	
517.00†	0.000	279.305	517.00	0.00	0.00	0.00	0.00	
617.00†	0.000	279.305	617.00	0.00	0.00	0.00	0.00	
717.00†	0.000	279.305	717.00	0.00	0.00	0.00	0.00	
817.00†	0.000	279.305	817.00	0.00	0.00	0.00	0.00	
917.00†	0.000	279.305	917.00	0.00	0.00	0.00	0.00	
1017.00†	0.000	279.305	1017.00	0.00	0.00	0.00	0.00	
1117.00†	0.000	279.305	1117.00	0.00	0.00	0.00	0.00	
1217.00†	0.000	279.305	1217.00	0.00	0.00	0.00	0.00	
1317.00†	0.000	279.305	1317.00	0.00	0.00	0.00	0.00	
1417.00†	0.000	279.305	1417.00	0.00	0.00	0.00	0.00	
1517.00†	0.000	279.305	1517.00	0.00	0.00	0.00	0.00	
1550.00	0.000	279.305	1550.00	0.00	0.00	0.00	0.00	End of Tangent
1617.00†	1.340	279.305	1616.99	0.41	0.13	-0.77	2.00	
1717.00†	3.340	279.305	1716.91	2.57	0.79	-4.80	2.00	
1817.00†	5.340	279.305	1816.61	6.56	2.01	-12.27	2.00	
1917.00†	7.340	279.305	1916.00	12.38	3.80	-23.17	2.00	
2017.00†	9.340	279.305	2014.93	20.03	6.14	-37.48	2.00	
2117.00†	11.340	279.305	2113.31	29.49	9.04	-55.19	2.00	
2217.00†	13.340	279.305	2210.99	40.76	12.50	-76.28	2.00	
2317.00†	15.340	279.305	2307.87	53.82	16.50	-100.72	2.00	
2417.00†	17.340	279.305	2403.83	68.66	21.05	-128.48	2.00	
2517.00†	19.340	279.305	2498.74	85.25	26.14	-159.53	2.00	
2617.00†	21.340	279.305	2592.50	103.58	31.76	-193.83	2.00	
2717.00†	23.340	279.305	2684.99	123.63	37.90	-231.34	2.00	

Planned Wellpath Report

LATHAM F11-J14-14HNB (REV-A.0) PWP

Page 3 of 7



REFERENCE WELLPATH IDENTIFICATION			
Operator	BONANZA CREEK OIL COMPANY	Slot	SLOT#21 LATHAM F11-J14-14HNB (362'FNL & 333'FEL, SEC.14)
Area	COLORADO	Well	LATHAM F11-J14-14HNB
Field	WELD COUNTY	Wellbore	LATHAM F11-J14-14HNB PWB
Facility	SEC.14-T4N-R63W		

WELLPATH DATA (136 stations) † = interpolated/extrapolated station

MD [ft]	Inclination [°]	Azimuth [°]	TVD [ft]	Vert Sect [ft]	North [ft]	East [ft]	DLS [°/100ft]	Comments
2817.00†	25.340	279.305	2776.10	145.36	44.57	-272.01	2.00	
2917.00†	27.340	279.305	2865.71	168.76	51.74	-315.80	2.00	
3017.00†	29.340	279.305	2953.72	193.79	59.42	-362.64	2.00	
3117.00†	31.340	279.305	3040.02	220.43	67.58	-412.48	2.00	
3217.00†	33.340	279.305	3124.51	248.64	76.23	-465.27	2.00	
3317.00†	35.340	279.305	3207.07	278.38	85.35	-520.94	2.00	
3417.00†	37.340	279.305	3287.62	309.63	94.93	-579.41	2.00	
3517.00†	39.340	279.305	3366.05	342.34	104.96	-640.63	2.00	
3617.00†	41.340	279.305	3442.27	376.48	115.43	-704.50	2.00	
3717.00†	43.340	279.305	3516.18	412.00	126.32	-770.97	2.00	
3817.00†	45.340	279.305	3587.70	448.85	137.62	-839.93	2.00	
3917.00†	47.340	279.305	3656.73	487.00	149.32	-911.32	2.00	
4017.00†	49.340	279.305	3723.20	526.40	161.40	-985.05	2.00	
4058.62	50.172	279.305	3750.09	543.16	166.53	-1016.40	2.00	End of Build (XS)
4117.00†	50.172	279.305	3787.48	566.80	173.78	-1060.64	0.00	
4217.00†	50.172	279.305	3851.53	607.30	186.20	-1136.43	0.00	
4317.00†	50.172	279.305	3915.57	647.80	198.62	-1212.22	0.00	
4417.00†	50.172	279.305	3979.62	688.30	211.03	-1288.00	0.00	
4517.00†	50.172	279.305	4043.67	728.80	223.45	-1363.79	0.00	
4617.00†	50.172	279.305	4107.72	769.30	235.87	-1439.58	0.00	
4717.00†	50.172	279.305	4171.76	809.80	248.29	-1515.36	0.00	
4817.00†	50.172	279.305	4235.81	850.30	260.70	-1591.15	0.00	
4917.00†	50.172	279.305	4299.86	890.80	273.12	-1666.94	0.00	
5017.00†	50.172	279.305	4363.91	931.30	285.54	-1742.73	0.00	
5117.00†	50.172	279.305	4427.96	971.80	297.96	-1818.51	0.00	
5217.00†	50.172	279.305	4492.00	1012.30	310.37	-1894.30	0.00	
5317.00†	50.172	279.305	4556.05	1052.80	322.79	-1970.09	0.00	
5417.00†	50.172	279.305	4620.10	1093.30	335.21	-2045.87	0.00	
5517.00†	50.172	279.305	4684.15	1133.80	347.63	-2121.66	0.00	
5617.00†	50.172	279.305	4748.20	1174.30	360.04	-2197.45	0.00	

Planned Wellpath Report

LATHAM F11-J14-14HNB (REV-A.0) PWP

Page 4 of 7



REFERENCE WELLPATH IDENTIFICATION			
Operator	BONANZA CREEK OIL COMPANY	Slot	SLOT#21 LATHAM F11-J14-14HNB (362'FNL & 333'FEL, SEC.14)
Area	COLORADO	Well	LATHAM F11-J14-14HNB
Field	WELD COUNTY	Wellbore	LATHAM F11-J14-14HNB PWB
Facility	SEC.14-T4N-R63W		

WELLPATH DATA (136 stations) † = interpolated/extrapolated station

MD [ft]	Inclination [°]	Azimuth [°]	TVD [ft]	Vert Sect [ft]	North [ft]	East [ft]	DLS [°/100ft]	Comments
5717.00†	50.172	279.305	4812.24	1214.80	372.46	-2273.24	0.00	
5817.00†	50.172	279.305	4876.29	1255.30	384.88	-2349.02	0.00	
5917.00†	50.172	279.305	4940.34	1295.80	397.30	-2424.81	0.00	
6017.00†	50.172	279.305	5004.39	1336.30	409.71	-2500.60	0.00	
6117.00†	50.172	279.305	5068.43	1376.80	422.13	-2576.38	0.00	
6217.00†	50.172	279.305	5132.48	1417.30	434.55	-2652.17	0.00	
6317.00†	50.172	279.305	5196.53	1457.80	446.97	-2727.96	0.00	
6417.00†	50.172	279.305	5260.58	1498.30	459.38	-2803.74	0.00	
6517.00†	50.172	279.305	5324.63	1538.80	471.80	-2879.53	0.00	
6617.00†	50.172	279.305	5388.67	1579.30	484.22	-2955.32	0.00	
6717.00†	50.172	279.305	5452.72	1619.80	496.63	-3031.11	0.00	
6817.00†	50.172	279.305	5516.77	1660.30	509.05	-3106.89	0.00	
6917.00†	50.172	279.305	5580.82	1700.80	521.47	-3182.68	0.00	
7017.00†	50.172	279.305	5644.87	1741.30	533.89	-3258.47	0.00	
7117.00†	50.172	279.305	5708.91	1781.80	546.30	-3334.25	0.00	
7217.00†	50.172	279.305	5772.96	1822.30	558.72	-3410.04	0.00	
7317.00†	50.172	279.305	5837.01	1862.80	571.14	-3485.83	0.00	
7398.49	50.172	279.305	5889.20	1895.80	581.26	-3547.59	0.00	End of Tangent (XS)
7417.00†	49.985	276.904	5901.08	1903.54	583.26	-3561.64	10.00	
7517.00†	49.843	263.823	5965.64	1953.29	583.75	-3637.84	10.00	
7617.00†	51.156	250.964	6029.40	2015.32	566.90	-3712.84	10.00	
7717.00†	53.811	238.797	6090.44	2087.74	533.20	-3784.35	10.00	
7817.00†	57.605	227.587	6146.89	2168.34	483.70	-3850.20	10.00	
7917.00†	62.303	217.381	6197.05	2254.69	419.88	-3908.40	10.00	
8017.00†	67.685	208.073	6239.38	2344.15	343.69	-3957.17	10.00	
8117.00†	73.556	199.486	6272.60	2434.01	257.45	-3995.03	10.00	
8217.00†	79.756	191.417	6295.71	2521.54	163.78	-4020.83	10.00	
8317.00†	86.146	183.662	6307.99	2604.08	65.51	-4033.79	10.00	
8376.67	90.000	179.102	6310.00†	2649.91	5.92	-4035.22	10.00	End of 3D Arc (XS)
8417.00†	90.000	179.102	6310.00	2679.86	-34.40	-4034.59	0.00	

Planned Wellpath Report

LATHAM F11-J14-14HNB (REV-A.0) PWP

Page 5 of 7



REFERENCE WELLPATH IDENTIFICATION			
Operator	BONANZA CREEK OIL COMPANY	Slot	SLOT#21 LATHAM F11-J14-14HNB (362'FNL & 333'FEL, SEC.14)
Area	COLORADO	Well	LATHAM F11-J14-14HNB
Field	WELD COUNTY	Wellbore	LATHAM F11-J14-14HNB PWB
Facility	SEC.14-T4N-R63W		

WELLPATH DATA (136 stations) † = interpolated/extrapolated station

MD [ft]	Inclination [°]	Azimuth [°]	TVD [ft]	Vert Sect [ft]	North [ft]	East [ft]	DLS [°/100ft]	Comments
8517.00†	90.000	179.102	6310.00	2754.14	-134.39	-4033.02	0.00	
8617.00†	90.000	179.102	6310.00	2828.42	-234.38	-4031.46	0.00	
8717.00†	90.000	179.102	6310.00	2902.70	-334.37	-4029.89	0.00	
8817.00†	90.000	179.102	6310.00	2976.98	-434.35	-4028.33	0.00	
8917.00†	90.000	179.102	6310.00	3051.26	-534.34	-4026.76	0.00	
9017.00†	90.000	179.102	6310.00	3125.54	-634.33	-4025.19	0.00	
9117.00†	90.000	179.102	6310.00	3199.82	-734.32	-4023.63	0.00	
9217.00†	90.000	179.102	6310.00	3274.10	-834.30	-4022.06	0.00	
9317.00†	90.000	179.102	6310.00	3348.38	-934.29	-4020.49	0.00	
9417.00†	90.000	179.102	6310.00	3422.66	-1034.28	-4018.93	0.00	
9517.00†	90.000	179.102	6310.00	3496.94	-1134.27	-4017.36	0.00	
9617.00†	90.000	179.102	6310.00	3571.22	-1234.26	-4015.79	0.00	
9717.00†	90.000	179.102	6310.00	3645.50	-1334.24	-4014.23	0.00	
9817.00†	90.000	179.102	6310.00	3719.78	-1434.23	-4012.66	0.00	
9917.00†	90.000	179.102	6310.00	3794.06	-1534.22	-4011.09	0.00	
10017.00†	90.000	179.102	6310.00	3868.34	-1634.21	-4009.53	0.00	
10117.00†	90.000	179.102	6310.00	3942.62	-1734.19	-4007.96	0.00	
10217.00†	90.000	179.102	6310.00	4016.90	-1834.18	-4006.39	0.00	
10317.00†	90.000	179.102	6310.00	4091.18	-1934.17	-4004.83	0.00	
10417.00†	90.000	179.102	6310.00	4165.46	-2034.16	-4003.26	0.00	
10517.00†	90.000	179.102	6310.00	4239.74	-2134.15	-4001.70	0.00	
10617.00†	90.000	179.102	6310.00	4314.02	-2234.13	-4000.13	0.00	
10717.00†	90.000	179.102	6310.00	4388.30	-2334.12	-3998.56	0.00	
10817.00†	90.000	179.102	6310.00	4462.57	-2434.11	-3997.00	0.00	
10917.00†	90.000	179.102	6310.00	4536.85	-2534.10	-3995.43	0.00	
11017.00†	90.000	179.102	6310.00	4611.13	-2634.08	-3993.86	0.00	
11117.00†	90.000	179.102	6310.00	4685.41	-2734.07	-3992.30	0.00	
11217.00†	90.000	179.102	6310.00	4759.69	-2834.06	-3990.73	0.00	
11317.00†	90.000	179.102	6310.00	4833.97	-2934.05	-3989.16	0.00	
11417.00†	90.000	179.102	6310.00	4908.25	-3034.03	-3987.60	0.00	

Planned Wellpath Report

LATHAM F11-J14-14HNB (REV-A.0) PWP

Page 6 of 7



REFERENCE WELLPATH IDENTIFICATION			
Operator	BONANZA CREEK OIL COMPANY	Slot	SLOT#21 LATHAM F11-J14-14HNB (362'FNL & 333'FEL, SEC.14)
Area	COLORADO	Well	LATHAM F11-J14-14HNB
Field	WELD COUNTY	Wellbore	LATHAM F11-J14-14HNB PWB
Facility	SEC.14-T4N-R63W		

WELLPATH DATA (136 stations) † = interpolated/extrapolated station

MD [ft]	Inclination [°]	Azimuth [°]	TVD [ft]	Vert Sect [ft]	North [ft]	East [ft]	DLS [°/100ft]	Comments
11517.00†	90.000	179.102	6310.00	4982.53	-3134.02	-3986.03	0.00	
11617.00†	90.000	179.102	6310.00	5056.81	-3234.01	-3984.46	0.00	
11717.00†	90.000	179.102	6310.00	5131.09	-3334.00	-3982.90	0.00	
11817.00†	90.000	179.102	6310.00	5205.37	-3433.99	-3981.33	0.00	
11917.00†	90.000	179.102	6310.00	5279.65	-3533.97	-3979.77	0.00	
12017.00†	90.000	179.102	6310.00	5353.93	-3633.96	-3978.20	0.00	
12117.00†	90.000	179.102	6310.00	5428.21	-3733.95	-3976.63	0.00	
12217.00†	90.000	179.102	6310.00	5502.49	-3833.94	-3975.07	0.00	
12317.00†	90.000	179.102	6310.00	5576.77	-3933.92	-3973.50	0.00	
12417.00†	90.000	179.102	6310.00	5651.05	-4033.91	-3971.93	0.00	
12517.00†	90.000	179.102	6310.00	5725.33	-4133.90	-3970.37	0.00	
12617.00†	90.000	179.102	6310.00	5799.61	-4233.89	-3968.80	0.00	
12717.00†	90.000	179.102	6310.00	5873.89	-4333.88	-3967.23	0.00	
12817.00†	90.000	179.102	6310.00	5948.17	-4433.86	-3965.67	0.00	
12917.00†	90.000	179.102	6310.00	6022.45	-4533.85	-3964.10	0.00	
12922.04	90.000	179.102	6310.00 ²	6026.19	-4538.89	-3964.02	0.00	End of Tangent (XS)

HOLE & CASING SECTIONS - Ref Wellbore: LATHAM F11-J14-14HNB PWB Ref Wellpath: LATHAM F11-J14-14HNB (REV-A.0) PWP

String/Diameter	Start MD [ft]	End MD [ft]	Interval [ft]	Start TVD [ft]	End TVD [ft]	Start N/S [ft]	Start E/W [ft]	End N/S [ft]	End E/W [ft]
9.625in Casing Surface	17.00	1550.00	1533.00	17.00	1550.00	0.00	0.00	0.00	0.00

Planned Wellpath Report

LATHAM F11-J14-14HNB (REV-A.0) PWP

Page 7 of 7



REFERENCE WELLPATH IDENTIFICATION			
Operator	BONANZA CREEK OIL COMPANY	Slot	SLOT#21 LATHAM F11-J14-14HNB (362'FNL & 333'FEL, SEC.14)
Area	COLORADO	Well	LATHAM F11-J14-14HNB
Field	WELD COUNTY	Wellbore	LATHAM F11-J14-14HNB PWB
Facility	SEC.14-T4N-R63W		

TARGETS									
Name	MD [ft]	TVD [ft]	North [ft]	East [ft]	Grid East [US ft]	Grid North [US ft]	Latitude	Longitude	Shape
LATHAM SECTION 14		-1.00	171.26	152.51	3307689.09	1361141.22	40°19'10.121"N	104°23'47.454"W	polygon
2) LATHAM F11-J14-14HNB BHL (470'FSL & 939'FWL, SEC.14)	12922.04	6310.00	-4538.89	-3964.02	3303631.65	1356380.44	40°18'23.573"N	104°24'40.589"W	point
1) LATHAM F11-J14-14HNB LP (260'FNL & 944'FWL, SEC.14)	8376.67	6310.00	5.92	-4035.22	3303503.93	1360923.81	40°19'08.484"N	104°24'41.517"W	point
LATHAM HARDLINE 260'FNL & 470'FSL & 260'E/W		6385.00	45.09	-120.00	3307418.19	1361011.67	40°19'08.874"N	104°23'50.972"W	polygon

SURVEY PROGRAM - Ref Wellbore: LATHAM F11-J14-14HNB PWB Ref Wellpath: LATHAM F11-J14-14HNB (REV-A.0) PWP				
Start MD [ft]	End MD [ft]	Positional Uncertainty Model	Log Name/Comment	Wellbore
17.00	1550.00	BHI NaviTrak (Rotating+Axial Corr)		LATHAM F11-J14-14HNB PWB
1550.00	12922.04	BHI AutoTrak Curve (Axial Corr, Short spacing)		LATHAM F11-J14-14HNB PWB