

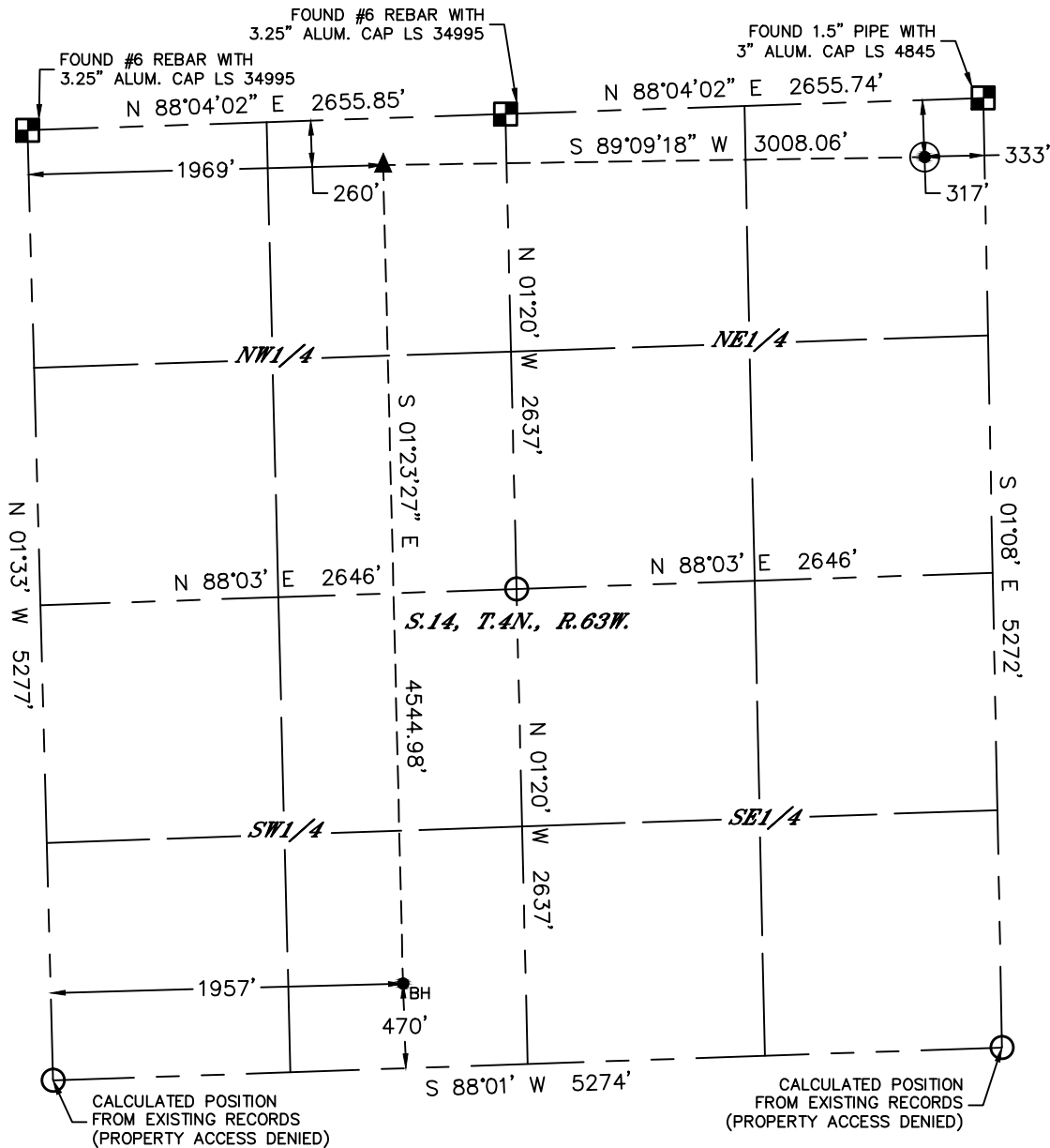


Lat40°, Inc. 6250 W. 10th Street, Unit 2, Greeley, CO 970-515-5294

WELL LOCATION CERTIFICATE

LATHAM 21-24-14HNC

SECTION: 14
TOWNSHIP: 4N
RANGE: 63W
6TH. P.M.
WELD COUNTY, CO



CLIENT: BONANZA CREEK ENERGY						LANDMAN: JOSEPH SCHULTZ			
INSTRUMENT OPERATOR: CASEY KOHOUT						SURVEY DATE: 9/21/2018		SURFACE USE: RANGELAND	
SHL FOOTAGE				SHL LAT °	SHL LONG °	SHL PDOP	SHL ELEV (FT.)	SHL 1/4/1/4	SHL S-T-R
317	FNL	333	FEL	40.31913	-104.39706	1.6	4604	NENE	14-4-63

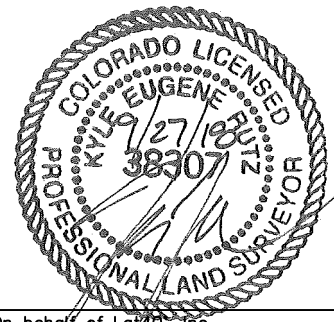
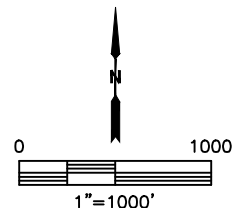
BHL FOOTAGE				BHL LAT °	BHL LONG °	BHL S-T-R	EP LAT °	EP LONG °	EP S-T-R
470	FSL	1957	FWL	40.30664	-104.40765	14-4-63	40.31911	-104.40785	14-4-63

LEGEND

- = ALIQUOT MONUMENT AS DESCRIBED
- = CALCULATED POSITION
- = SURFACE HOLE LOCATION (SHL)
- ▲ = ENTRY POINT LOCATION (EP)
- ◆ = TOP OF PRODUCTION ZONE (TPZ)
- BH = BOTTOM HOLE LOCATION (BHL)

NOTE:

- 1) Bearings shown are Grid Bearings of the Colorado State Plane Coordinate System, North Zone, North American Datum 1983. The lineal dimensions as contained herein are based upon the "U.S. Survey Foot."
- 2) Distances to section lines measured at 90 degrees from said section lines.
- 3) Ground elevations are based on an observed GPS elevation (NAVD 1988 DATUM).
- 4) Latitude and Longitude shown are (NAD 83 DATUM).
- 5) IMPROVEMENTS: See LOCATION DRAWING for all visible improvements within 500' of oil and gas location.
- 6) This map does not represent a boundary survey.



Kyle E. Rutz—On behalf of Lat40°, Inc.
Colorado Licensed Professional Land Surveyor No. 38307
DATE: 9/27/2018
PROJECT#: 2018140