

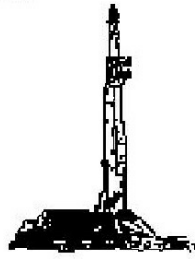
GOOLSBY BROTHERS and associates, inc.

575 Union Blvd, Suite 208
Lakewood, CO 80228
303-945-2860 Office



**Geological Wellsite
Supervision**

www.goolsbybrothers.com



**Scale 1:240 (5"=100') Imperial
Measured Depth Log**

Well Name: Troudt 41N-23A-M

API: 051234624000

Location: NE/NW Section 27 T6N R66W Weld County, CO.

License Number:

Region: Wattenberg

Spud Date: Sep 02, 2018

Drilling Completed: Sep 05, 2018

Surface Coordinates: 760' FNL 1700' FWL NE/NW Sec. 27 T6N R66W

Lat/Long: 40.464592N -104.767261W

Bottom Hole Planned: 995' FSL 510' FEL SE/SE SEC. 23 T6N R66W

Coordinates:

Ground Elevation (ft): 4,719'

K.B. Elevation (ft): 4,744'

Logged Interval (ft): 6,900' **To:** 14,960' **Total Depth (ft):** 14,960' DMTD

Formation: Niobrara A Chalk

Type of Drilling Fluid: OBM (LSND Surface).

Printed by HorizontalLog from WellSight Systems 1-800-447-1534 www.WellSight.com

OPERATOR

Company: SRC Energy, Inc

Geologist: Nick Argis

Address: 1675 Broadway, Suite 2600

Denver, Colorado 80202

(720) 616-4300

GEOLOGIST

Name: Blake Stacey & Tekabe Gedamu

Company: Goolsby Brothers & Assoc. (GBA), Inc. (www.goolsbybrothers.com)

Address: 575 Union Blvd. Suite 208,

Lakewood CO. 80228

Tel 303-618-7736

E-logs

MWD GR from S.C. to 14,956' MD

Casing

9 5/8" Surface Casing pre set @ 1,841' MD.

5 1/2" Production Liner set @ 14,953' on 9/06/2018.

Comments

- 1) Drilling Contractor: Precision Drilling, Rig #562
Pumps 1&2: Rostell F-1600 5" x 12" (.0692 Bbls./stroke)
Toolpusher: John Martin Meyers, Tyson Westgard.
- 2) Company Man: Kent Priddy
Kevin Brakovec
Tim Jones
Kalib Ford
- 3) Mud Comapny : Anchor USA
Engineer: Joseph Wood, David Owen
- 4) Directional Drilling: Baker Hughes
Drillers: Aaron Herskind, Jeremiah Samson
MWD: John Bryson, Baker Remote Field Operations.
- 5) Gas Equipment: Pason Gas Analyzer (Spectrometer)

ROCK TYPES

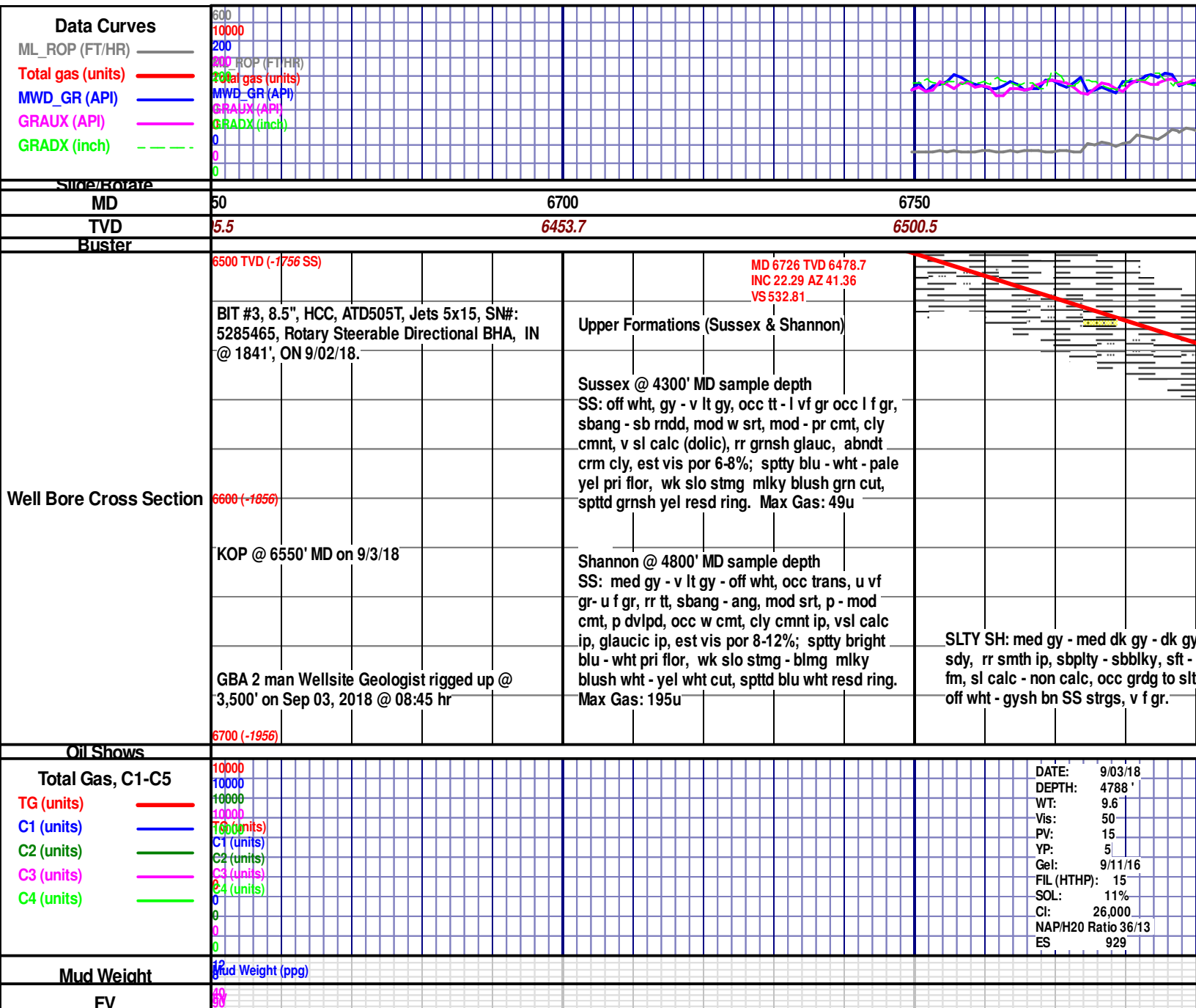
	Bent		Dol		Mrlst_sh (intbdd)		Carb sh
	Cht		Lmst		Shale		Ss
	Clyst		Chalk		Shgy		Sltst
	Oil sat.		Mrlst		Silty sh		

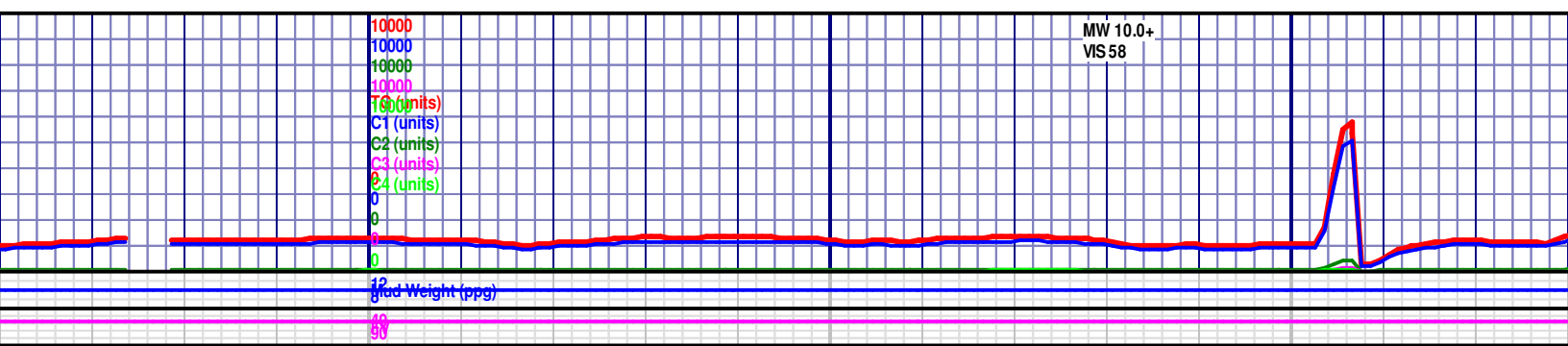
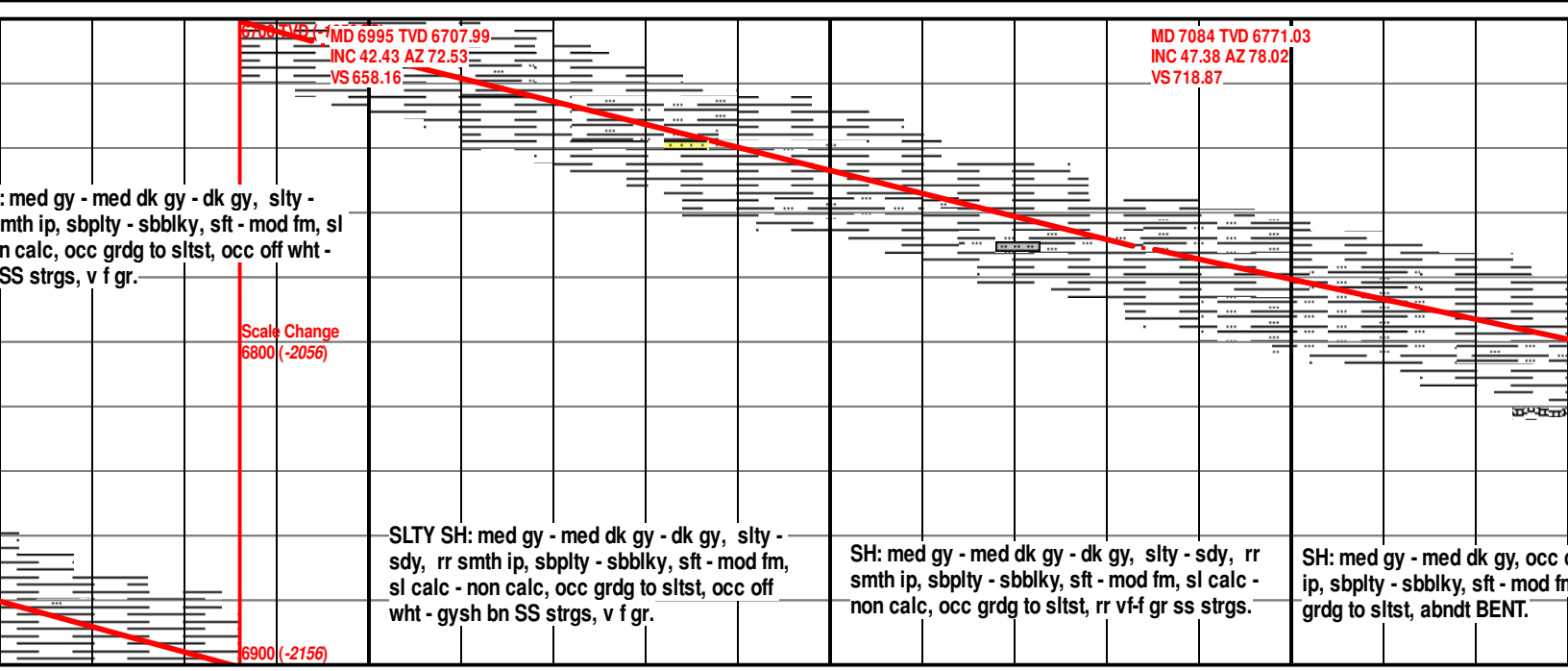
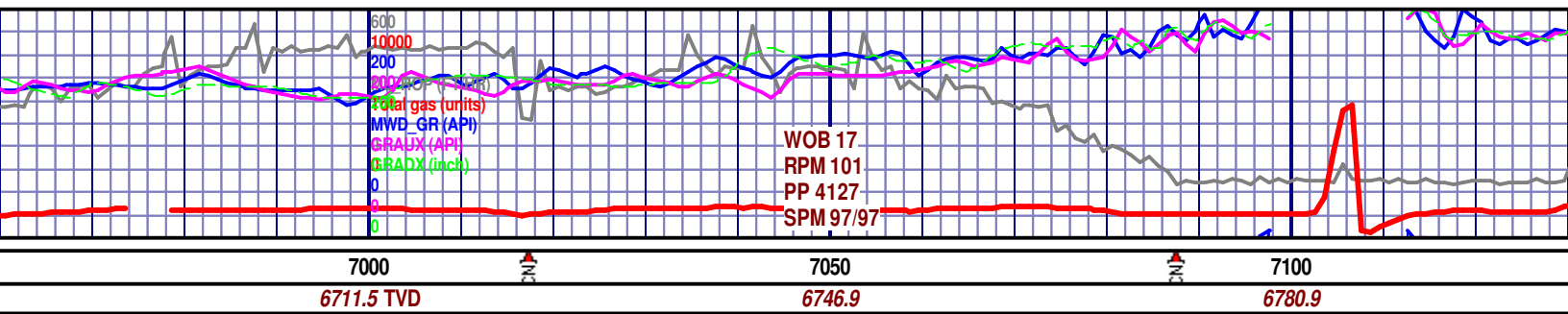
ACCESSORIES

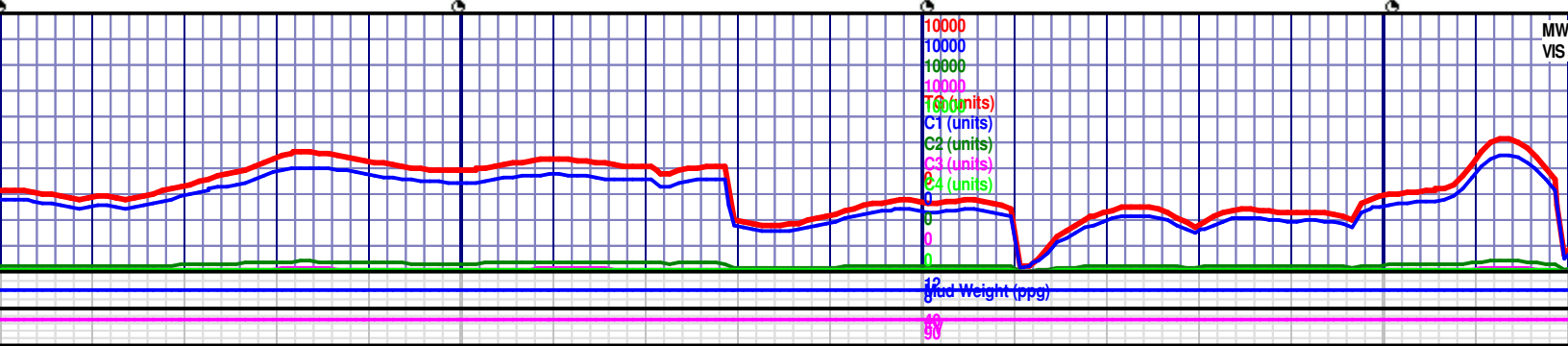
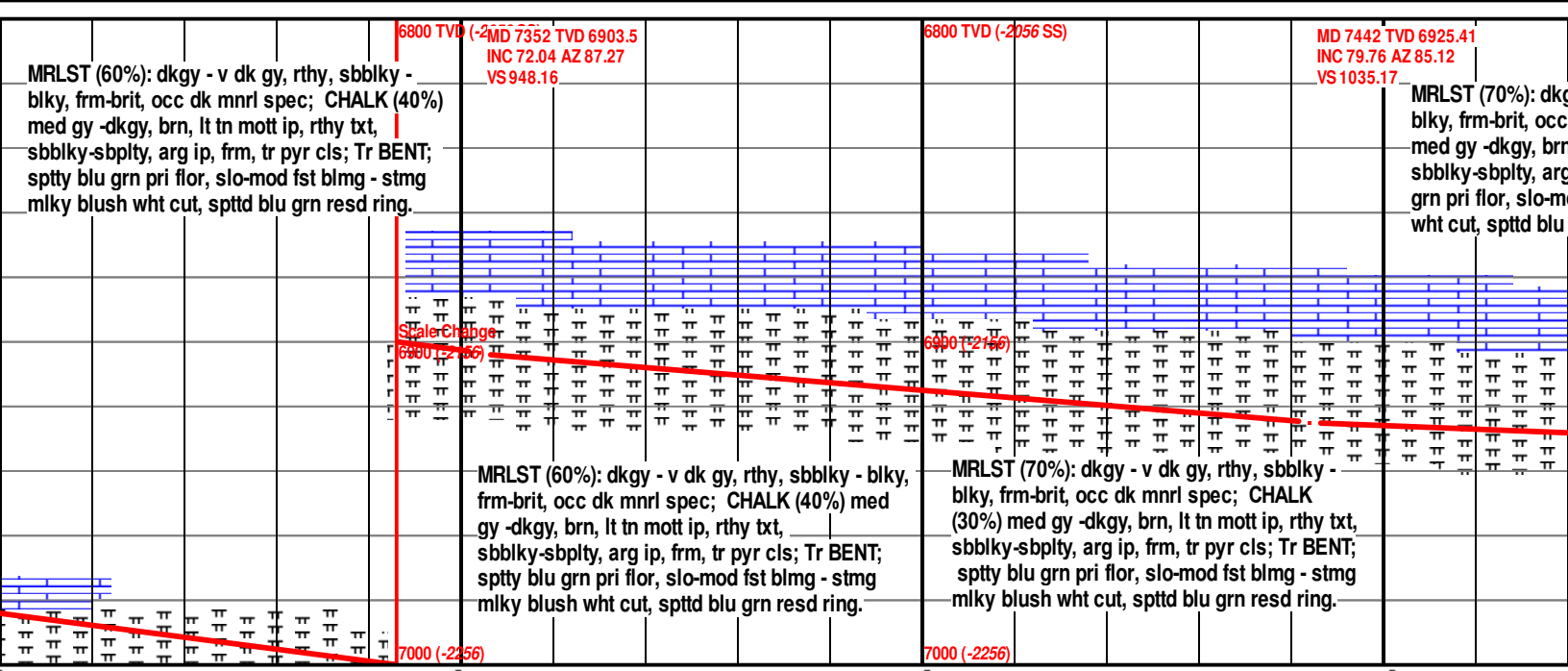
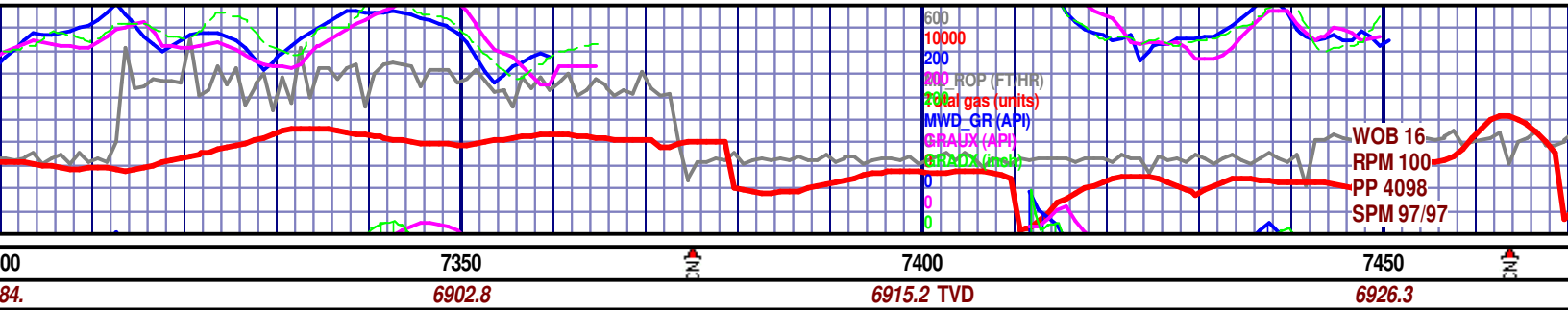
MINERAL							
	Anhy		Marl		Cephal		Bent
	Arggrn		Minxl		Coral		Dol
	Arg		Nodule		Crin		Ls
	Bent		Phos		Echin		Mrst
	Bit		Pyr		Fish		Sltstrg
	Brecfrag		Salt		Foram		Ssstrg
	Calc		Sandy		Fossil		
	Carb		Silt		Gastro	TEXTURE	
	Chtdk		Sil		Oolite		Boundst
	Chtlt		Sulphur		Ostra		Chalky
	Dol		Tuff		Pelec		Cryxln
	Feldspar	FOSSIL			Pellet		Earthy
	Ferrpel		Algae		Pisolite		Finexln
	Ferr		Amph		Plant		Grainst
	Glau		Belm		Strom		Lithogr
	Gyp		Bioclst	STRINGER			Microxln
	Hvymin		Brach		Chlkstg		Mudst
	Kaol		Bryozoa		Arg		Packst
							Wackst

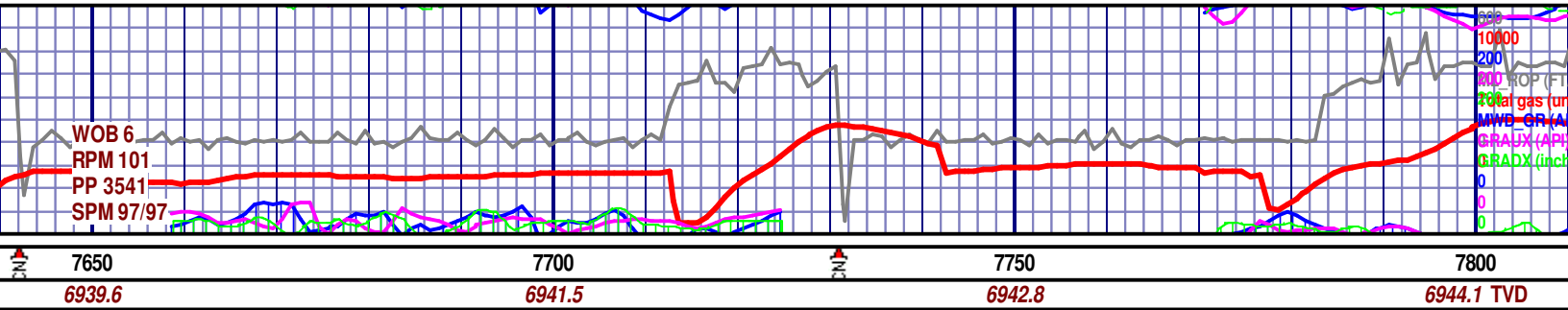
OTHER SYMBOLS

OIL SHOWS		POROSITY TYPE					
	Even		Earthy		Pinpoint		Angular
	Spotted		Fenest		Vuggy		
	Ques		Fracture	ROUNDING		SORTING	
	Dead		Inter		Rounded		Well
	Vspotty		Moldic		Subrnd		Moderate
	near even		Organic		Subang		Poor

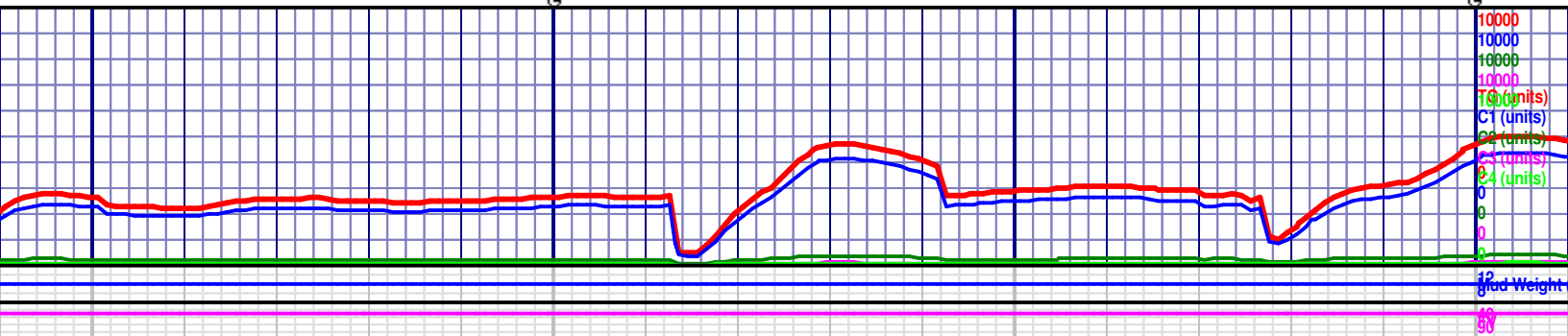


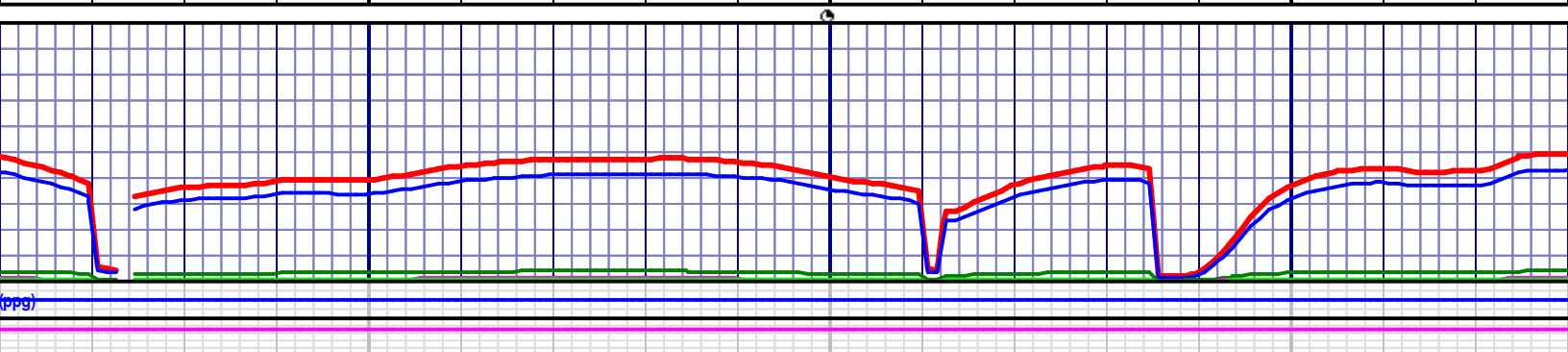
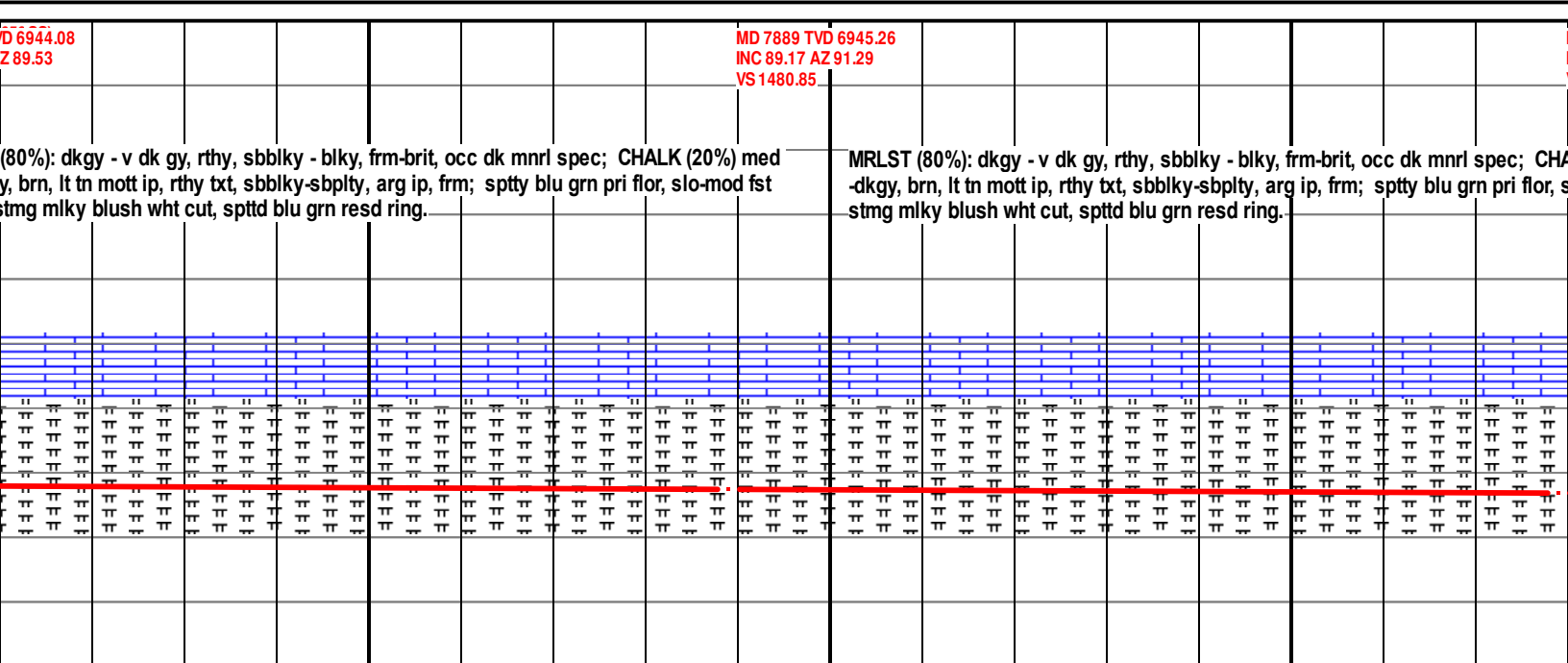


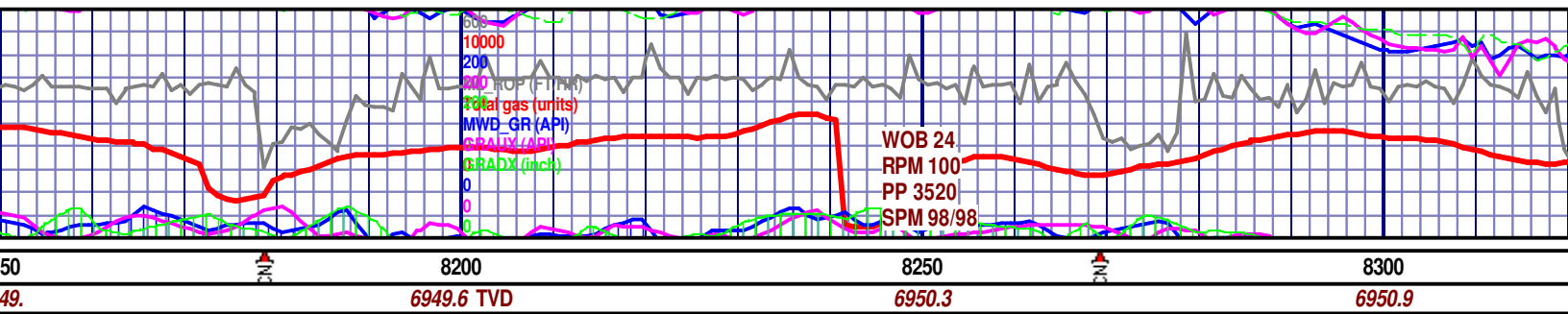




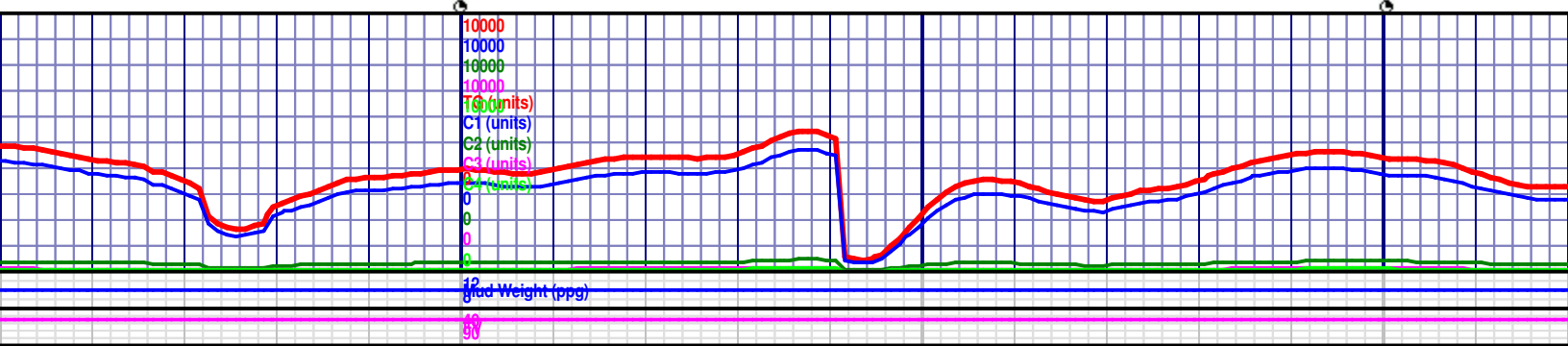
<p>ky - blk, frm-brit, occ dk mnrl spec; CHALK (25%) med gy sbppty, arg ip, frm; Tr BENT; sptty blu grn pri flor, slo-mod d blu grn resd ring.</p>	<p>MD 7710 TVD 6941.83 INC 87.81 AZ 88.61 VS 1301.91</p> <p>MRLST (75%): dkgy - v dk gy, rthy, sbblk - blk, frm-brit, occ dk mnrl spec; CHALK (25%) med gy -dkgy, brn, lt tn mott ip, rthy txt, sbblk-sbppty, arg ip, frm; Tr BENT; sptty blu grn pri flor, slo-mod fst blmg - stmg mlky blush wht cut, spttd blu grn resd ring.</p>	<p>MD 7800 TVD INC 89.32 A VS 1391.86</p> <p>MRLST gy -dkg blmg - s</p>
<p>6900 (-2150)</p>		<p>6900 (-2150)</p>
<p>7000 (-2256)</p>		<p>7000 (-2256)</p>

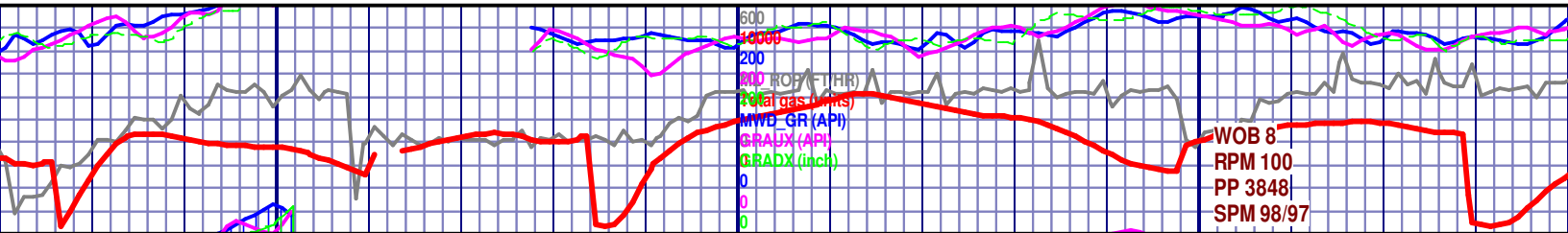






<p>MD 8158 TVD 6949.08 INC 89.26 AZ 91.05 VS 1749.78</p> <p>fr, frm-brit, occ dk mnrl spec; CHALK (10%) med gy arg ip, frm; sm intbd SH, sptty blu grn pri flor, td blu grn resd ring.</p>	<p>6800 TVD (-2056 SS)</p> <p>MRLST (90%): dkgy - v dk gy, rthy, sbblky - blky, frm-brit, occ dk mnrl spec; CHALK (10%) med gy -dkgy, brn, lt tn mott ip, rthy txt, sbblky-sbply, arg ip, frm; sm intbd SH, sptty blu grn pri flor, slo-mod fst blmg - stmg mlky blush wht cut, spttd blu grn resd ring.</p>	<p>MD 8247 TVD 6950.23 INC 89.26 AZ 90.21 VS 1838.77</p> <p>MRLST (85%): med gy -dkgy, pri flor, slo-mo</p>	
------------------------------------------------------------------------------------------------------------------------------------------------------------------------------------------------------------	----------------------------------------------------------------------------------------------------------------------------------------------------------------------------------------------------------------------------------------------------------------------------------------------------------------------	-----------------------------------------------------------------------------------------------------------------------------	--





8350
6951.6

8400
6952.4 TVD

8450
6953.3

MD 8337 TVD 6951.35
INC 89.32 AZ 89.28
VS 1928.76

6800 TVD (-2056 SS)

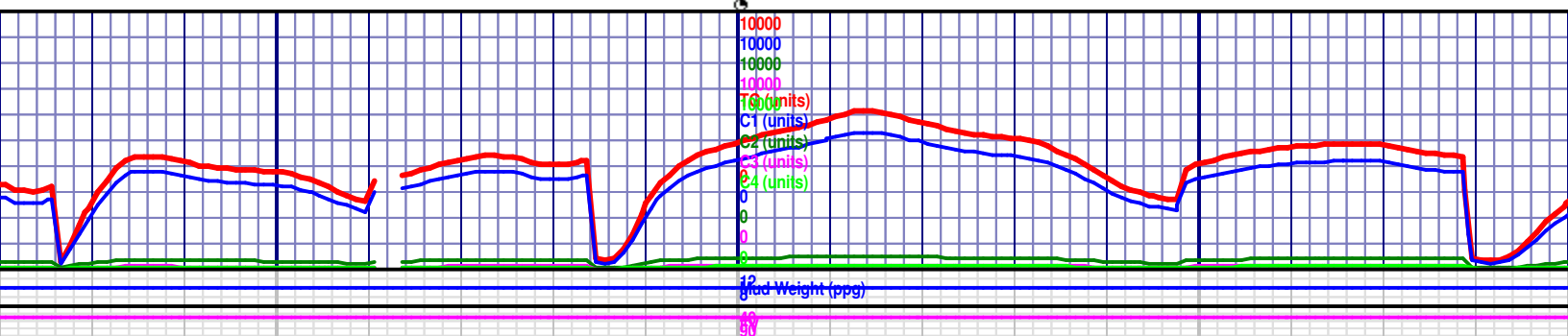
MD 8426 TVD 6952.78
INC 88.83 AZ 88.73
VS 2017.73

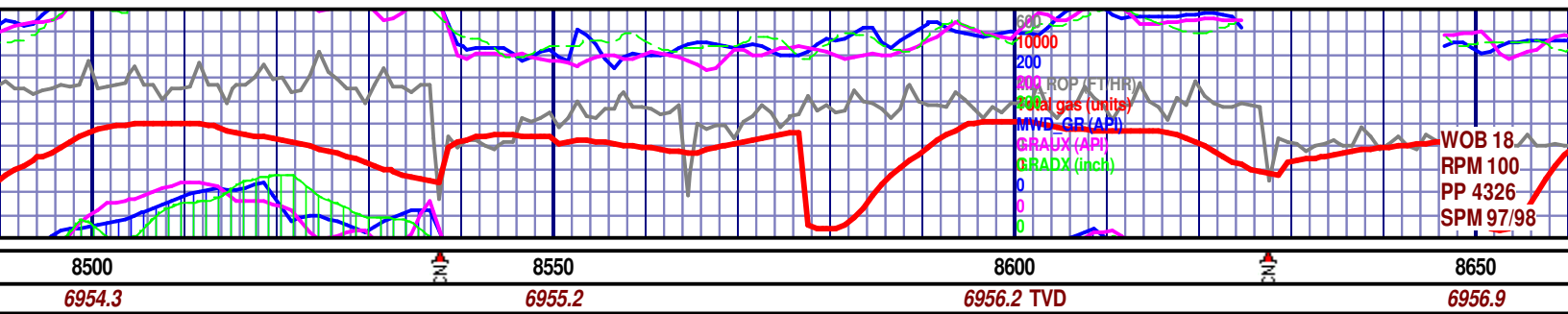
dkgy - v dk gy, rthy, sbblky - blk, frm-brit, occ dk mnrl spec; CHALK (15%)
brn, lt tn mott ip, rthy txt, sbblky-sbply, arg ip, frm; sm intbd SH, spty blu grn
d fst blmg - stmg mlky blush wht cut, spttd blu grn resd ring.

MRLST (90%): dkgy - v dk gy, rthy, sbblky - blk, frm-brit, occ dk mnrl spec; CHALK (15%)
med gy -dkgy, brn, lt tn mott ip, rthy txt, sbblky-sbply, arg ip, frm; sm intbd SH, spty
pri flor, slo-mod fst blmg - stmg mlky blush wht cut, spttd blu grn resd ring.

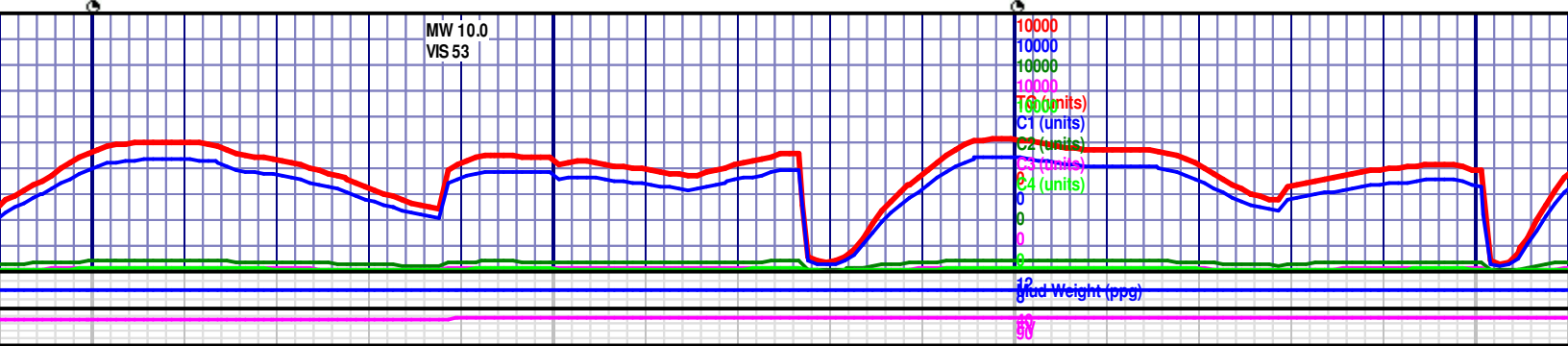
6900 (-2156)

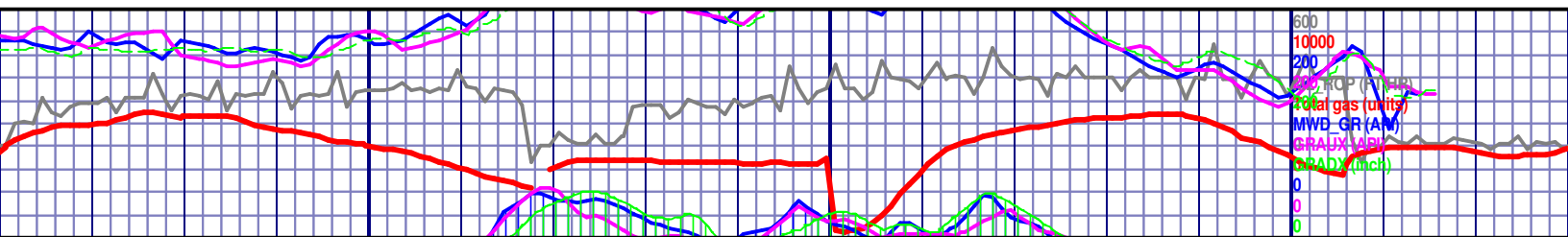
7000 (-2256)





MD 8516 TVD 6954.6 INC 88.86 AZ 88.43 VS 2107.68										MD 8605 TVD 6956.3 INC 88.95 AZ 87.8 VS 2196.61																													
MRLST (90%): dkgy - v dk gy, rthy, sbblky - blk, frm-brit, occ dk mnrl spec; CHALK (10%) med gy -dkgy, brn, lt tn mott ip, rthy txt, sbblky-sbplty, arg ip, frm; sm intbd SH, spty blu grn pri flor, slo-mod fst blmg - stmg mlky blush wht cut, spttd blu grn resd ring.																				MRLST (90%): dkgy - v dk gy, rthy, sbblky - blk, frm-brit, -dkgy, brn, lt tn mott ip, rthy txt, sbblky-sbplty, arg ip, frm; slo-mod fst blmg - stmg mlky blush wht cut, spttd blu grn																			
10% blu grn																																							
																				6900 (-2156)																			
																				7000 (-2256)																			





8700
6957.6

8750
6957.7

8800
6957.3 TVD

MD 8695 TVD 6957.58
INC 89.42 AZ 87.75
VS 2286.53

MD 8784 TVD 6957.7800 TVD (-2056 SS)
INC 90.43 AZ 86.94
VS 2375.43

occ dk mnrl spec; CHALK (10%) med gy
sm intbd SH, sptty blu grn pri flor,
resd ring.

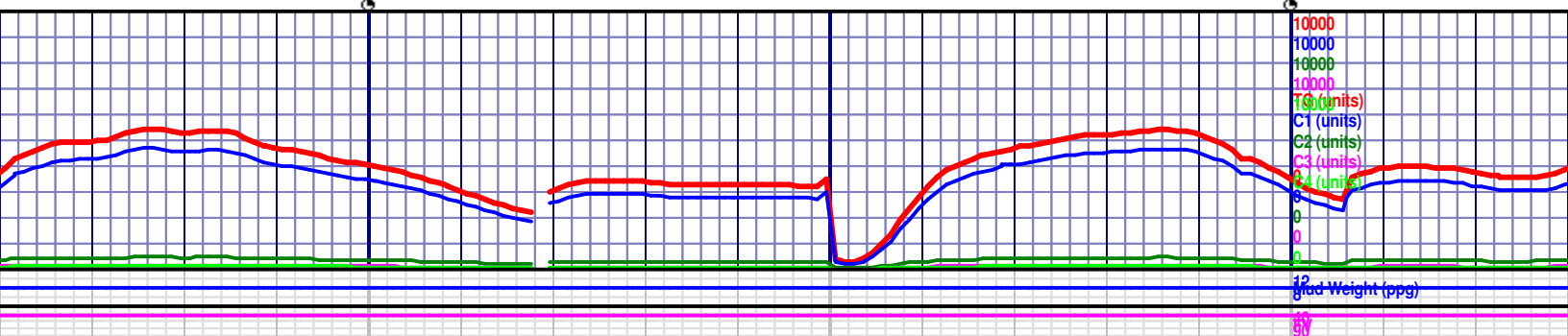
MRLST (90%): dkgy - v dk gy, rthy, sbblky - blky, frm-brit, occ dk mnrl spec; CHALK (10%) med gy
-dkgy, brn, lt tn mott ip, rthy txt, sbblky-sbply, arg ip, frm; sm intbd SH, sptty blu grn pri flor, slo-mod
fst blmg - stmg mlky blush wht cut, spttd blu grn resd ring.

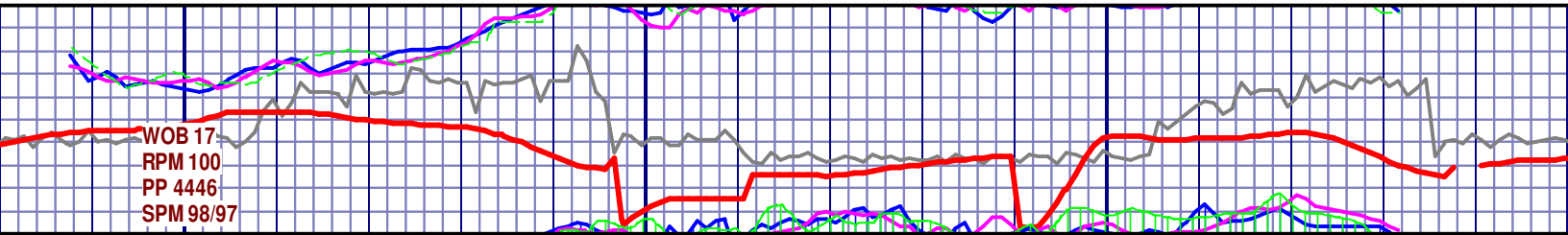
MRLST (95%): dkgy - v dk gy,
-dkgy, brn, lt tn mott ip, rthy tx
fst blmg - stmg mlky blush wh



6900 (-2156)

7000 (-2256)





8850

6956.2

8900

6955.1

8950

6954.1

9000

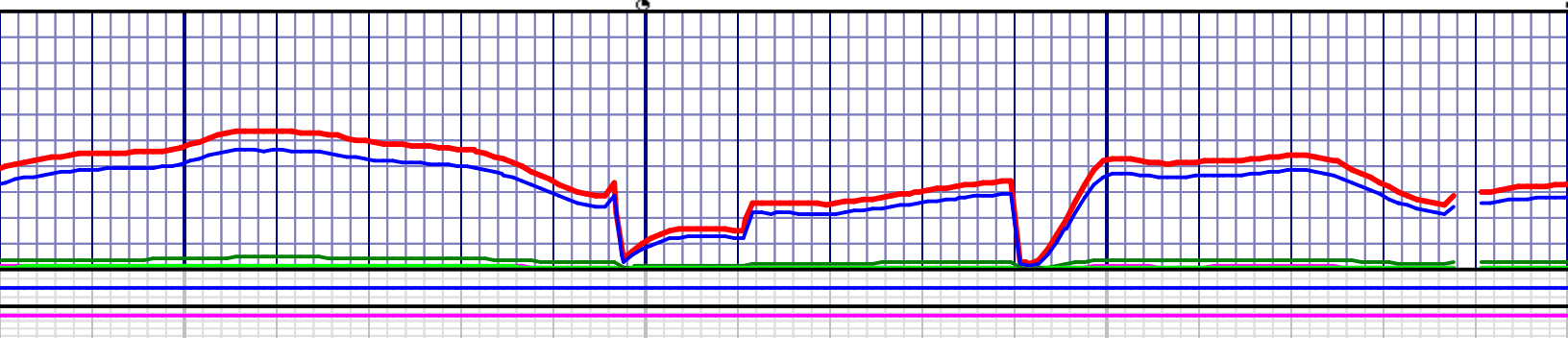
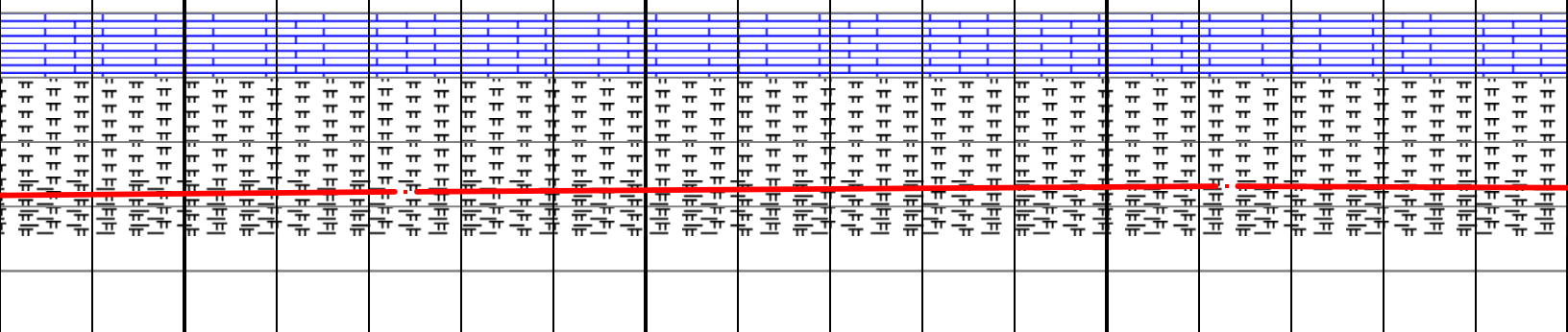
6954.1

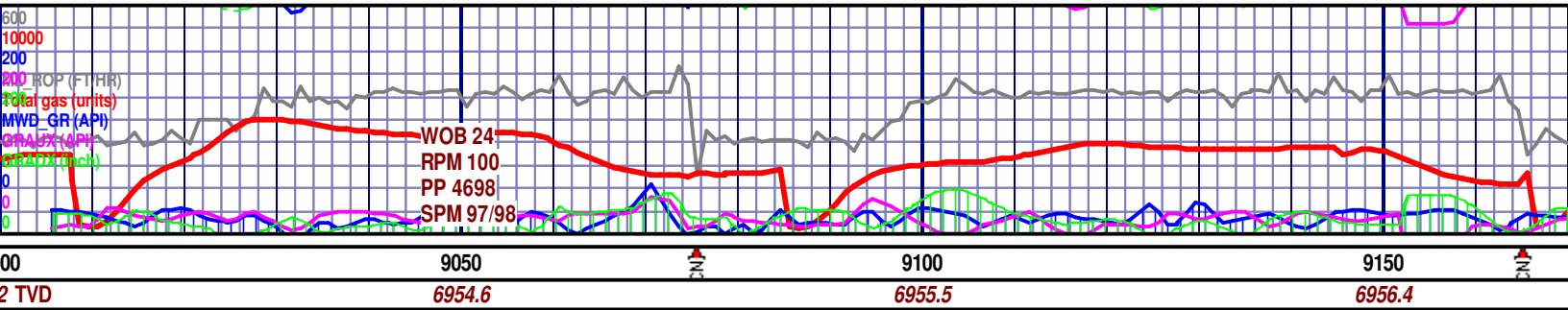
MD 8874 TVD 6955.66
INC 92.16 AZ 87.16
VS 2465.28

MD 8963 TVD 6953.84
INC 90.18 AZ 87.81
VS 2554.16

rthy, sbblky - blky, frm-brit, occ dk mnrl spec; CHALK (5%) med gy
t, sbblky-sbply, arg ip, frm; sm intbd SH, spty blu grn pri flor, slo-mod
t cut, spttd blu grn resd ring.

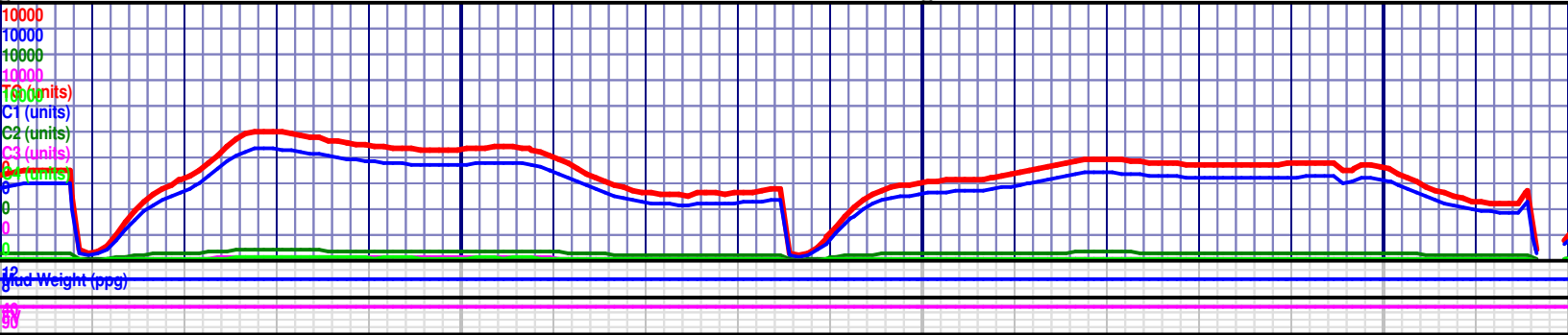
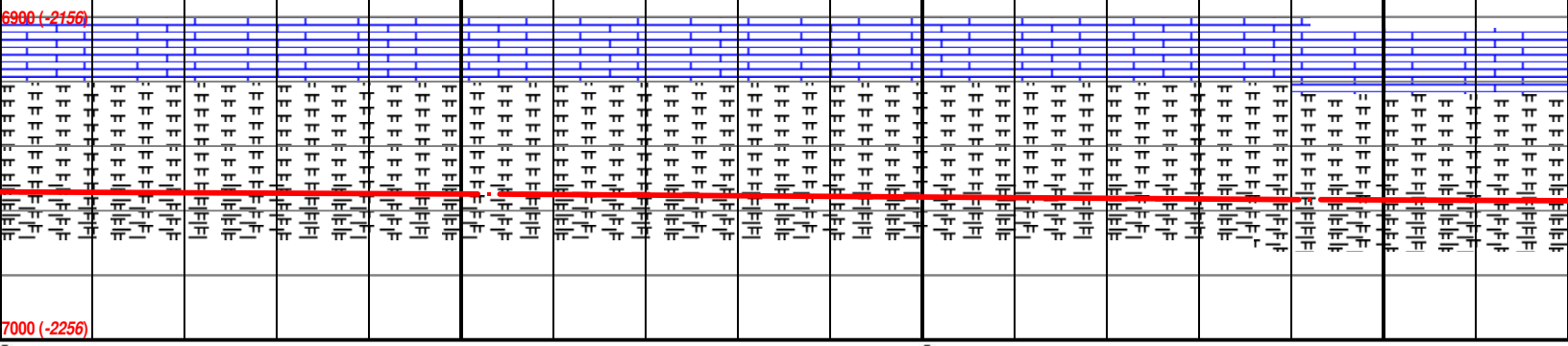
MRLST (90%): dkgy - v dk gy, rthy, sbblky - blky, frm-brit, occ dk mnrl spec; CHALK (10%) med gy
-dkgy, brn, lt tn mott ip, rthy txt, sbblky-sbply, arg ip, frm; sm intbd SH, spty blu grn pri flor, slo-mod
fst blmg - stmg mlky blush wht cut, spttd blu grn resd ring.

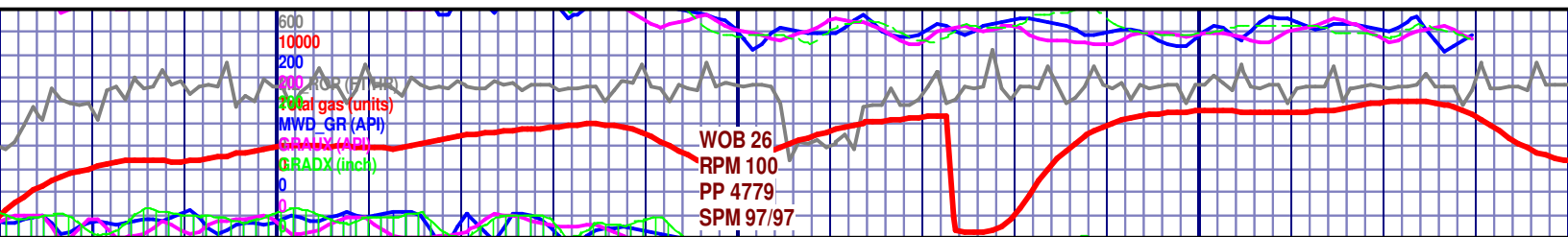




6800 TVD (-2056 SS) MD 9053 TVD 6954.65 INC 88.8 AZ 89.27 VS 2644.12 MD 9142 TVD 6956.29 INC 89.08 AZ 89.74 VS 2733.1

MRLST (95%): dkgy - v dk gy, rthy, sbblky - blky, frm-brit, occ dk mnrl spec; CHALK (5%) med gy -dkgy, brn, lt tn mott ip, rthy txt, sbblky-sbply, arg ip, frm; sm intbd SH, spty blu grn pri flor, slo-mod -dkgy, brn, lt tn mott ip, rthy txt, sbblky-sbply, arg ip, frm; sm intbd SH, fst blmg - stmg mlky blush wht cut, spttd blu grn resd ring.



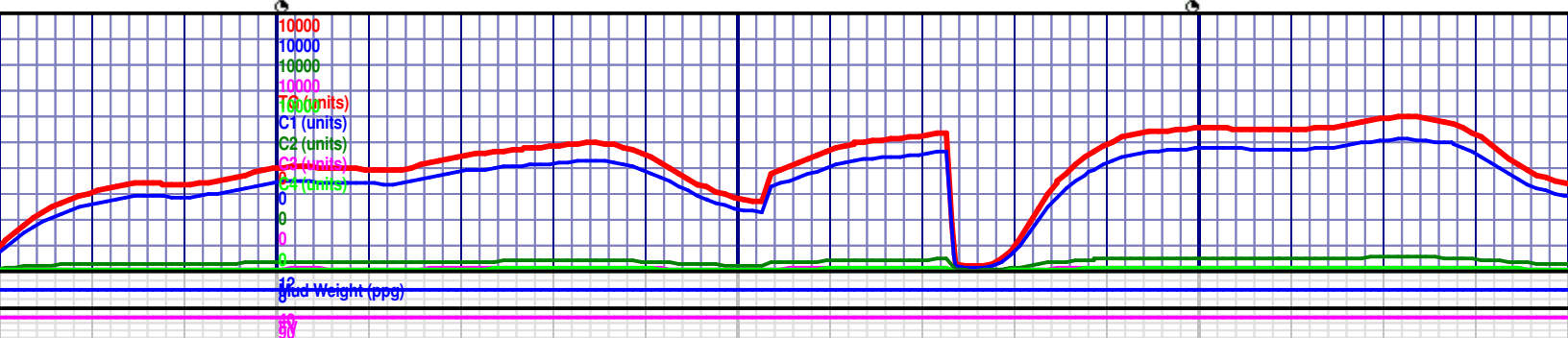
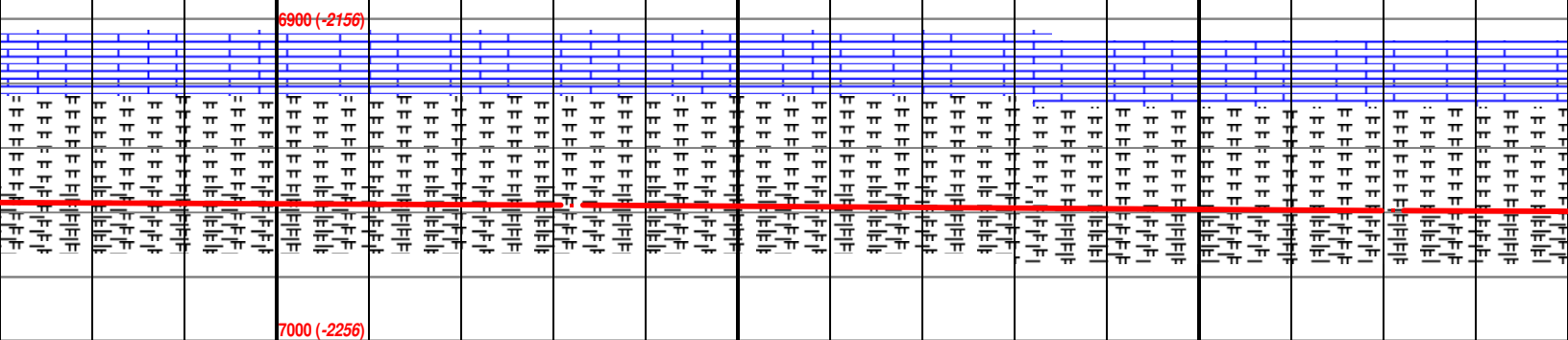


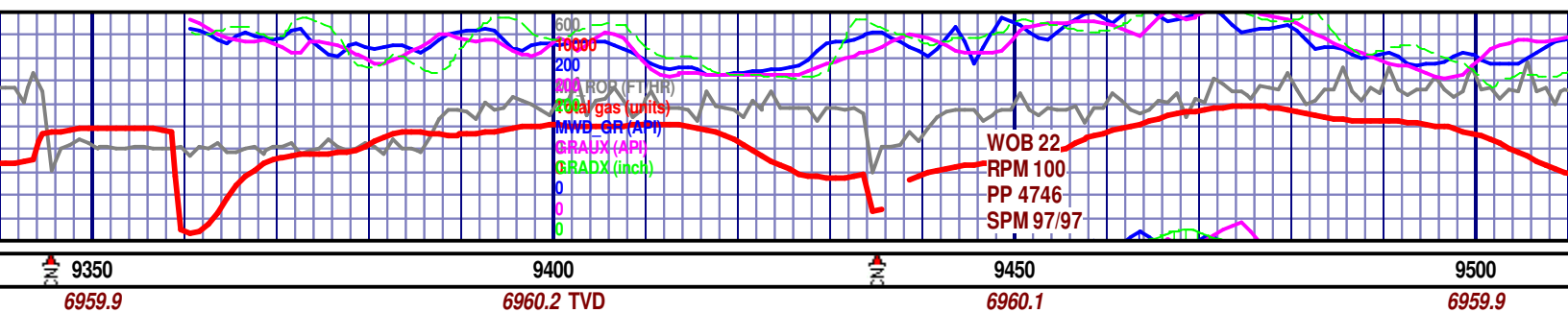
9200
6957.4 TVD

9250
6958.3

9300
6959.3

pec; CHALK (5%) med gy sppty blu grn pri flor, slo-mod	6800 TVD (-2056 SS) MRLST (90%): dkgy - v dk gy, rthy, sbblky - blkgy, frm-brit, occ dk mnrl spec; CHALK (5%) med gy -dkgy, brn, lt tn mott ip, rthy txt, sbblky-sbpty, arg ip, frm; SH (5%) dk gy, smth - occ rthy, sbblky - blkgy, frm-mhd, sppty blu grn pri flor, slo-mod fst blmg - stmg milky blush wht cut, spttd blu grn resd ring.	MD 9232 TVD 6957.96 INC 88.8 AZ 90.48 VS 2823.09	MD 9321 TVD 6959.71 INC 88.95 AZ 92.35 VS 2912.04
-----------------------------------------------------------	-------------------------------------------------------------------------------------------------------------------------------------------------------------------------------------------------------------------------------------------------------------------------------------------------------------------------------------------------------------	--------------------------------------------------------	---------------------------------------------------------



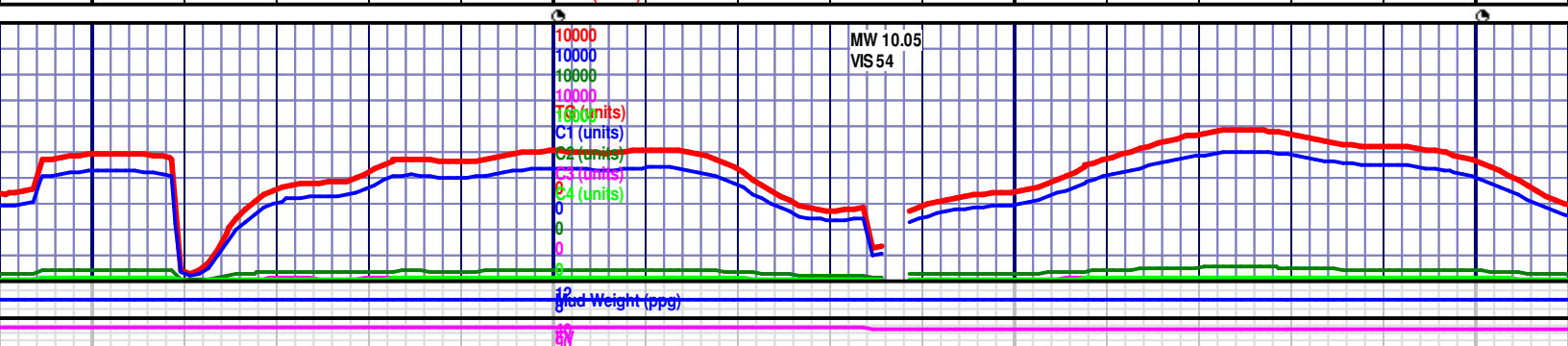
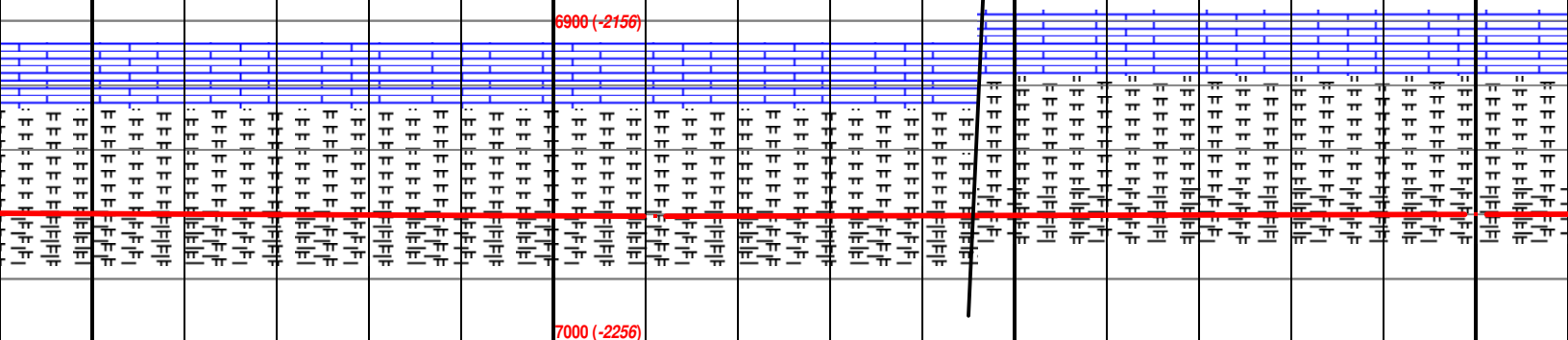


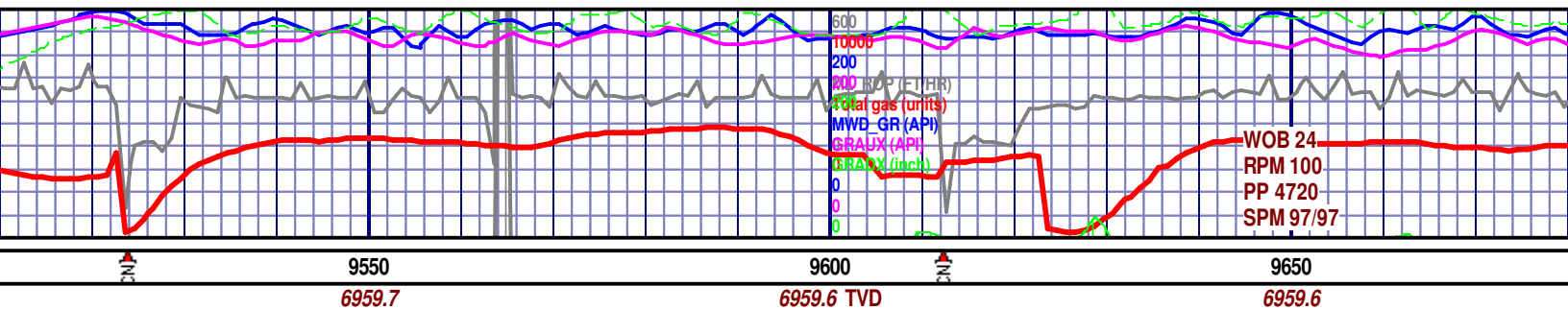
y - blkly, frm-brit, occ dk mnrl spec; CHALK (5%) med gy bplyt, arg ip, frm; SH (5%) dk gy, smth - occ rthy, sbbkly - mod fst blmg - stmg mlky blush wht cut, spptd blu grn resd					

MRLST (80%): dkgy - v dk gy, rthy, sbblky - blk, frm-brit, occ dk mnrl spec; **CHALK (5%)** med gy -dkgy, brn, lt tn mott ip, rthy txt, sbblky-sbply, arg ip, frm; **SH (15%)** dk gy, smth - occ rthy, sbblky - blk, frm-mhd, spity blu grn pri flor, slo-mod fst blmg - stmg mlky blush wht cut, spstd blu grn resd ring.

MD 9500 TV
INC 90.28 A
VS 3090.8

MRLST (8
-dkgy, brn
blky, frm-
ring.





D 6959.87
Z 93.08

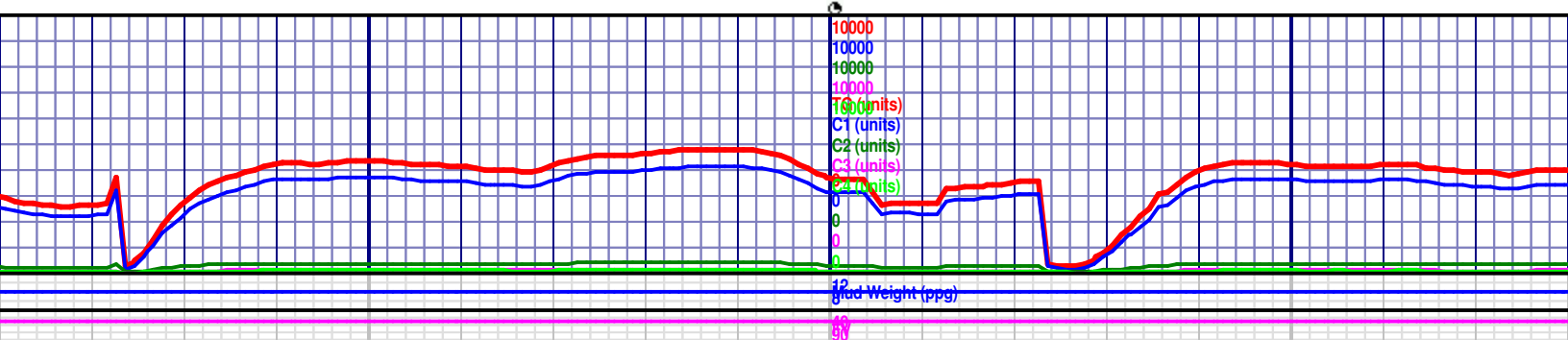
MD 9590 TVD 6959.65'-2056 SS)
INC 90 AZ 90.6
VS 3180.75

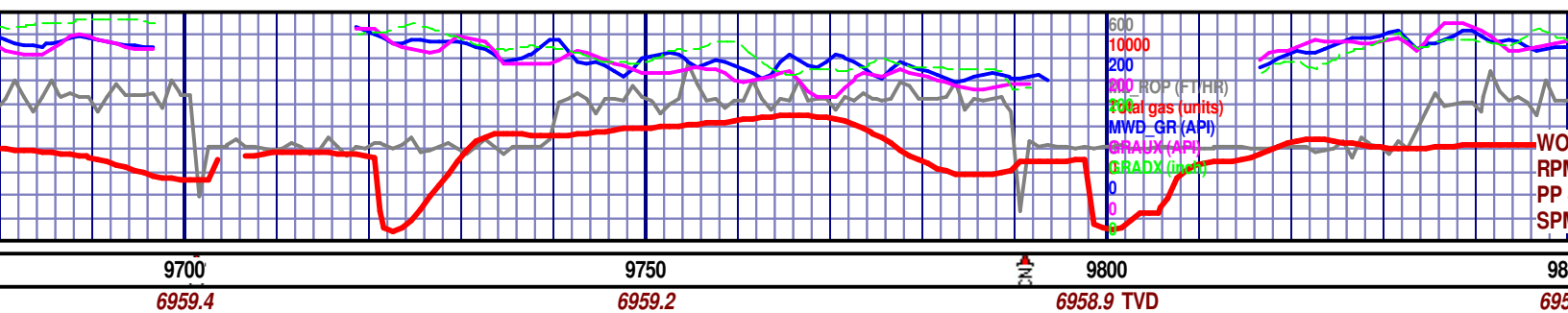
90%); dkgy - v dk gy, rthy, sbblky - blky, frm-brit, occ dk mnrl spec; CHALK (5%) med gy
n, lt tn mott ip, rthy txt, sbblky-sbply, arg ip, frm; SH (15%) dk gy, smth - occ rthy, sbblky -
r-mhd, sppty blu grn pri flwr, slo-mod fst blmg - stmg mlky blush wht cut, spptd blu grn resd

MRLST (80%): dkgy - v dk gy, rthy, sbblky - blky, frm-brit, occ dk mnrl spec; CHA
-dkgy, brn, lt tn mott ip, rthy txt, sbblky-sbplty, arg ip, frm; SH (15%) dk gy, smth -
blky, frm-mhd, sppty blu grn pri flwr, slo-mod fst blmg - stmg mlky blush wht cut, s
ring.

6900 (-2156)

7000 (-2256)



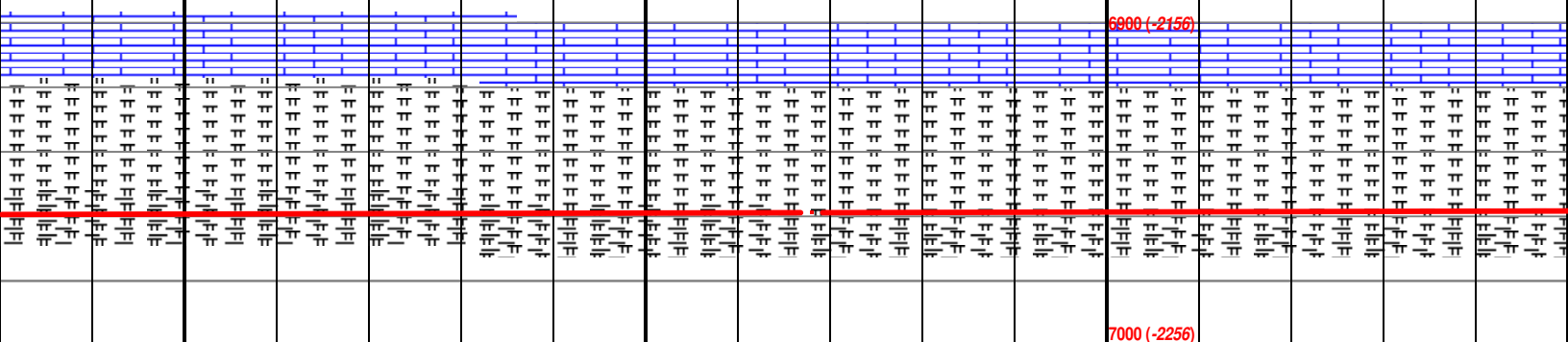


MD 9679 TVD 6959.54
INC 90.15 AZ 89.26
VS 3269.75

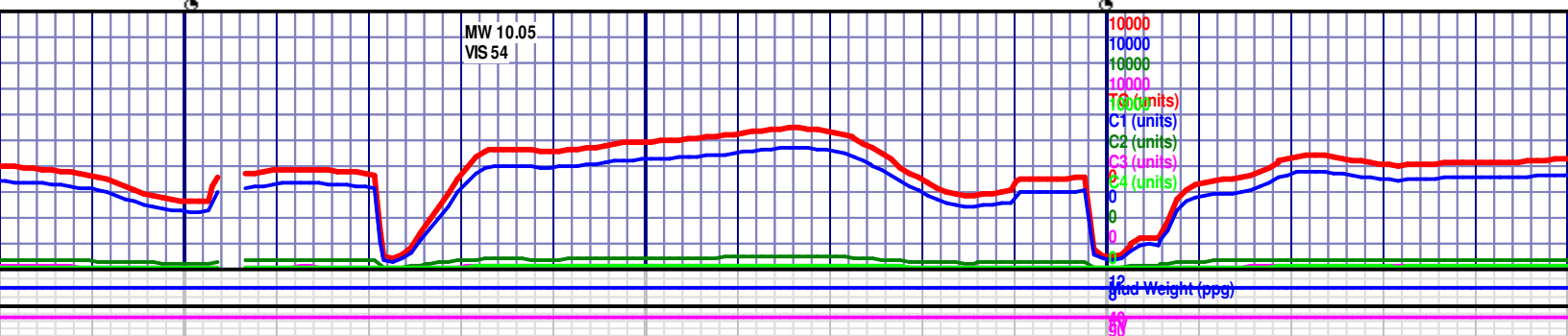
MD 9768 TVD 6959.11
INC 90.4 AZ 88.37
VS 3358.72

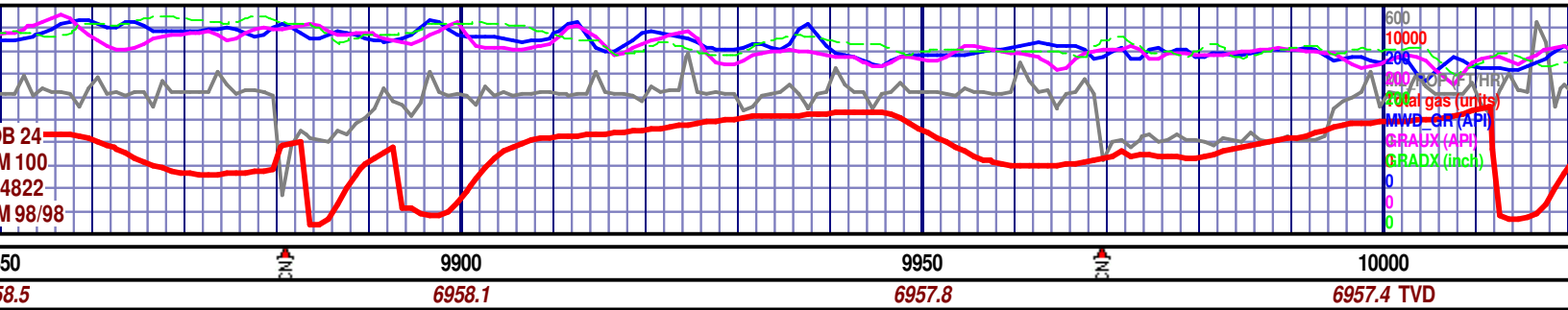
6800 TVD (-2056 SS)

<p> LK (5%) med gy occ rthy, sbblky - spttd blu grn resd </p>	<p> MRLST (85%): dkgy - v dk gy, rthy, sbblky - blky, frm-brit, occ dk mnrl spec; CHALK (5%) med gy -dkgy, brn, lt tn mott ip, rthy txt, sbblky-sbplty, arg ip, frm; SH (10%) dk gy, smth - occ rthy, sbblky - blky, frm-mhd, sptty blu grn pri flor, slo-mod fst blmg - stmg mlky blush wht cut, spttd blu grn resd ring. </p>	<p> MRLST (85%): dkgy - v dk gy, rthy, sbblky - blky, frm -dkgy, brn, lt tn mott ip, rthy txt, sbblky-sbplty, arg blky, frm-mhd, sptty blu grn pri flor, slo-mod fst bl ring. </p>
---------------------------------------------------------------------------------------------------------------	------------------------------------------------------------------------------------------------------------------------------------------------------------------------------------------------------------------------------------------------------------------------------------------------------------------------------------------------------------------------------------------------	---------------------------------------------------------------------------------------------------------------------------------------------------------------------------------------------------------------------------------------------------

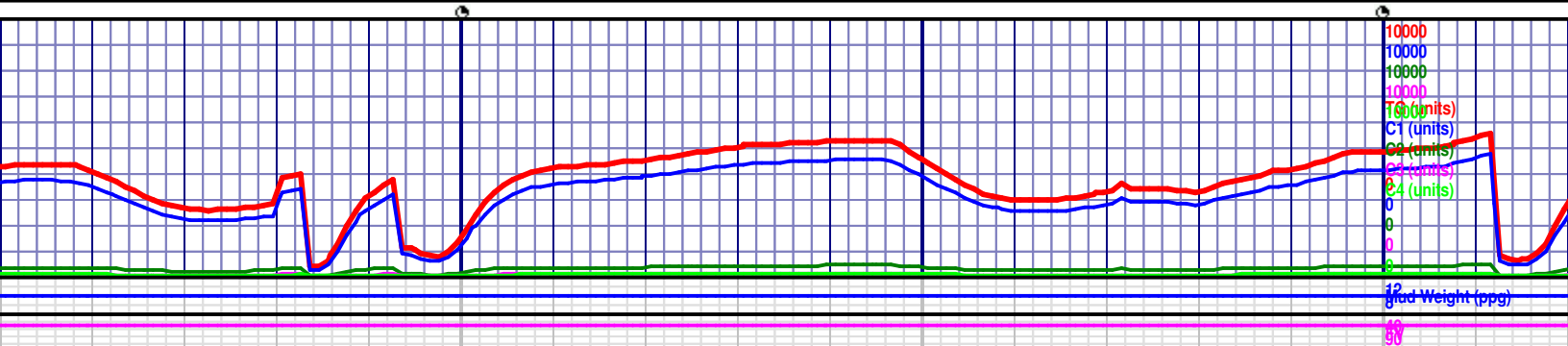


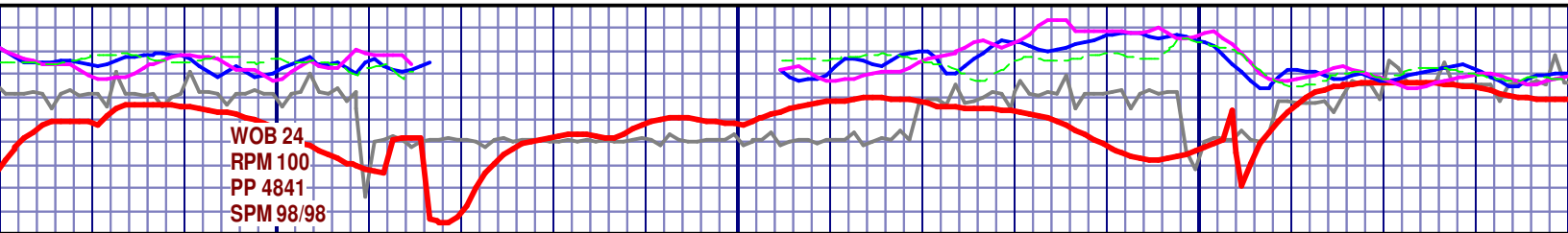
MW 10.05
VIS 54





m-brit, occ dk mnrl spec; CHALK (10%) med gy ip, frm; SH (5%) dk gy, smth - occ rthy, sbblky - ng - stng mlky blush wht cut, spttd blu grn resd																								
MRLST (85%): dkgy - v dk gy, rthy, sbblky - blk, frm-brit, occ dk mnrl spec; CHALK (15%) med gy -dkgy, brn, lt tn mott ip, rthy txt, sbblky-sbplty, arg ip, frm; SH intbds, dk gy, smth - occ rthy, sbblky - blk, frm-mhd, sptty blu grn pri flr, slo-mod fst blng - stng mlky blush wht cut, spttd blu grn resd ring.																								
MRLST (85%): dkgy -dkgy, brn, lt tn mott ip, rthy txt, sbblky-sbplty, arg ip, frm; SH intbds, dk gy, smth - occ rthy, sbblky - blk, frm-mhd, sptty blu grn pri flr, slo-mod fst blng - stng mlky blush wht cut, spttd blu grn resd ring.																								
6900 (-2156)																								
7000 (-2256)																								





WOB 24
RPM 100
PP 4841
SPM 98/98

10050
6957.

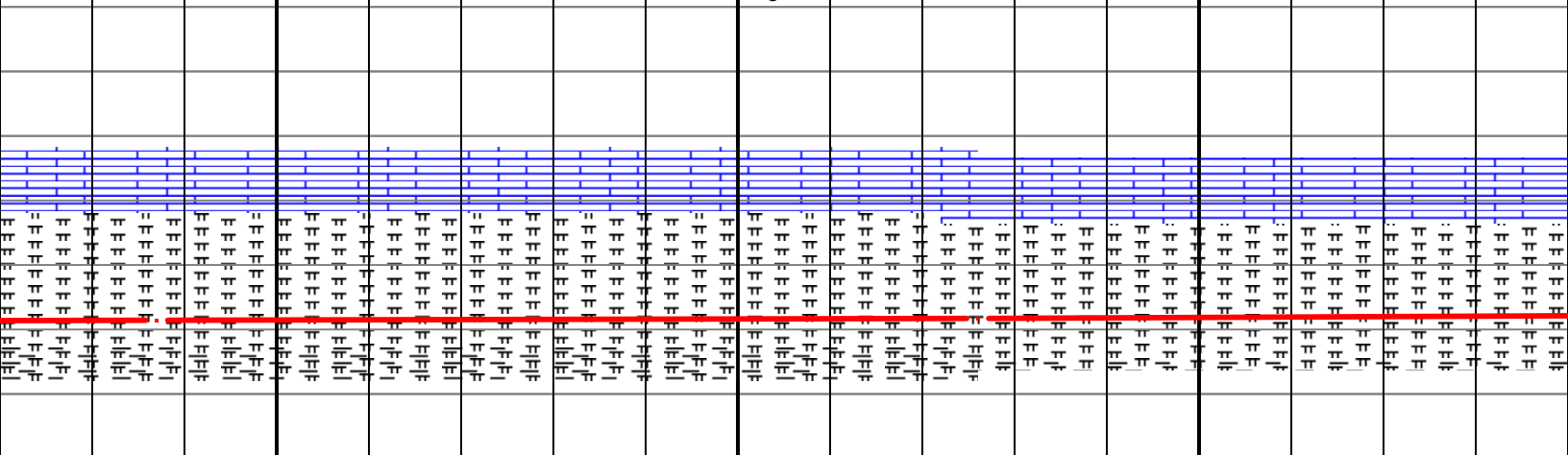
10100
6956.5

10150
6956.1

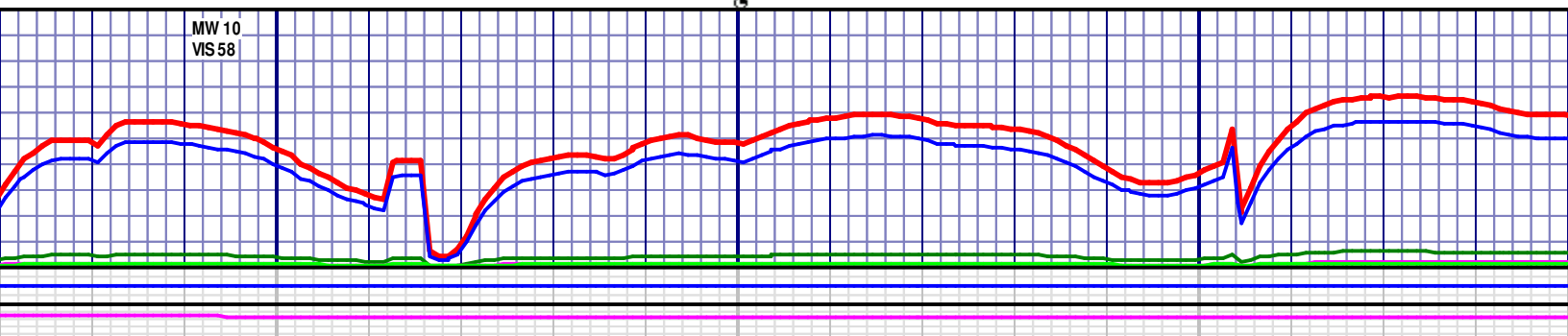
MD 10037 TVD 6957.14
INC 90.4 AZ 92.07
VS 3627.67

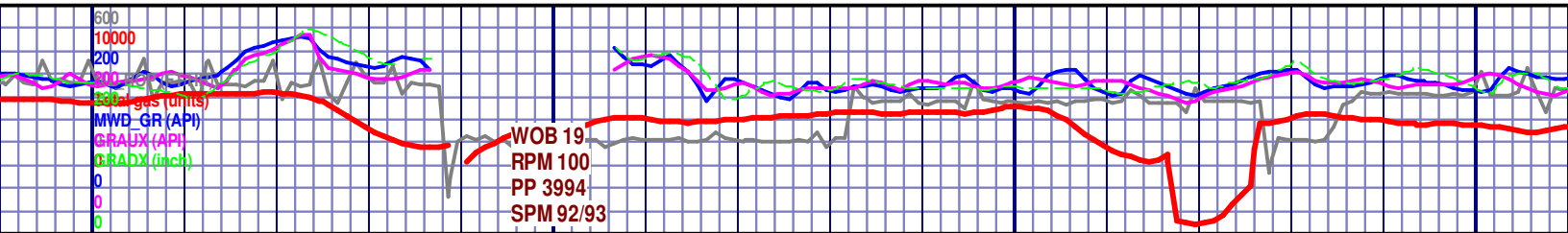
MD 10126 TVD 6956.3
INC 90.68 AZ 92.78
VS 3716.59

- v dk gy, rthy, sbblky - blky, frm-brit, occ dk mnrl spec; CHALK (15%) med gy
t ip, rthy txt, sbblky-sbply, arg ip, frm; SH intbds, dk gy, smth - occ rthy, sbblky -
ty blu grn pri flor, slo-mod fst blmg - stmg mlky blush wht cut, spstd blu grn resd
ring.



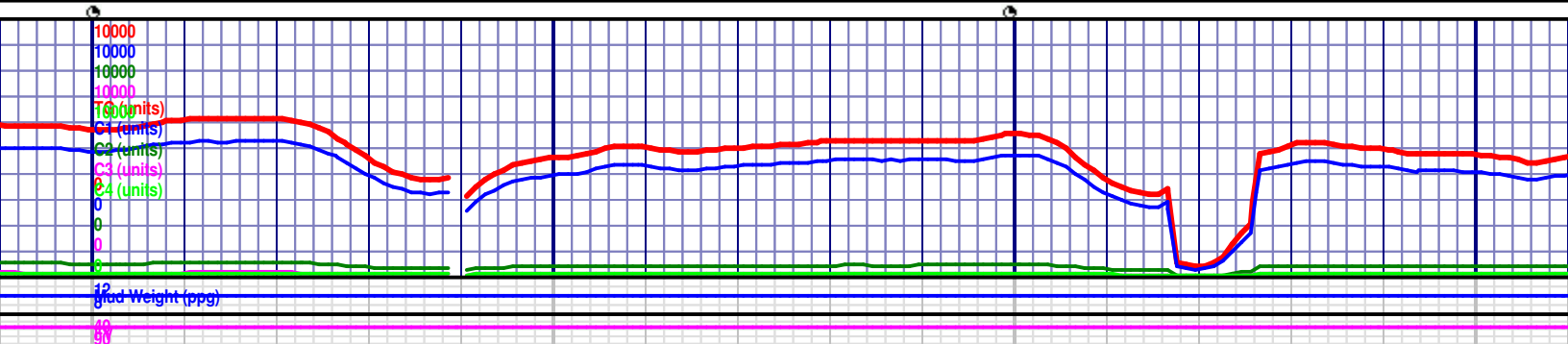
MW 10
VS 58

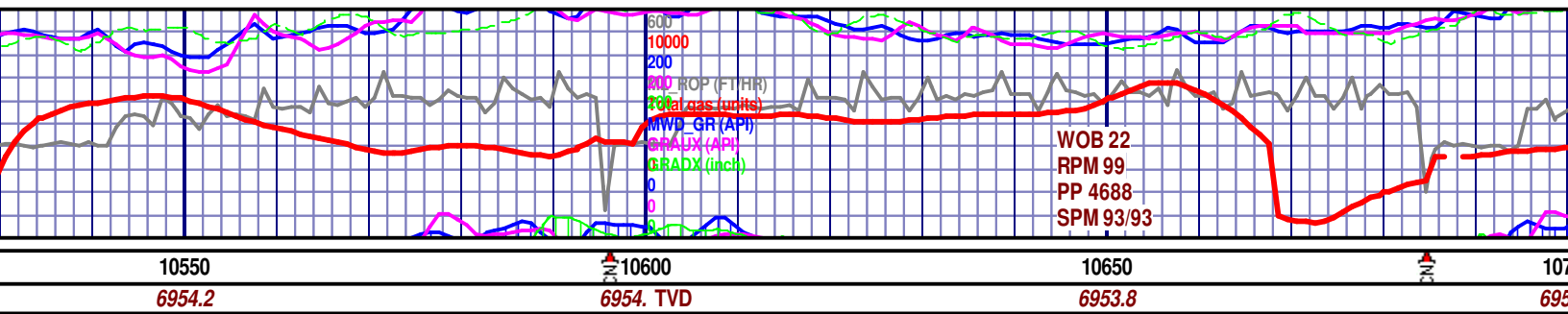




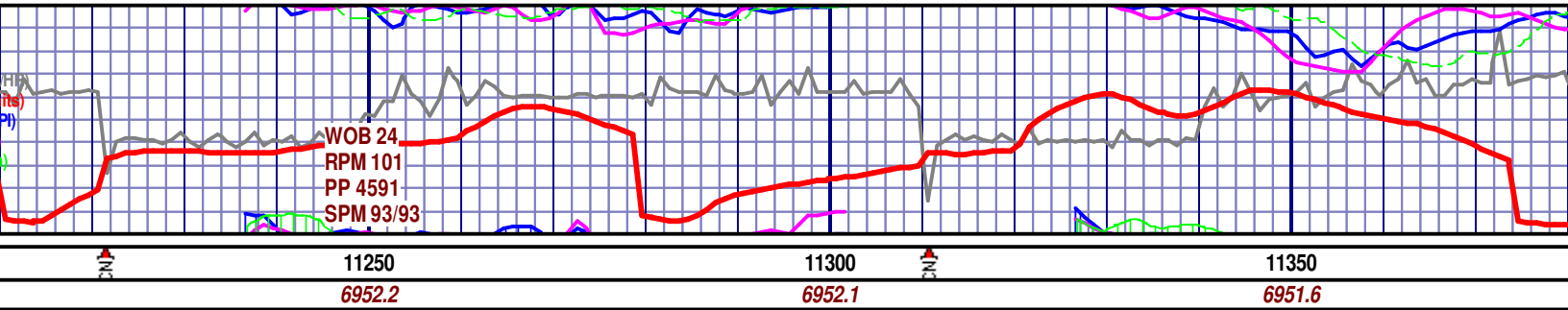
10200 10250 10300 10350
6955.5 TVD 6955.2 6954.9 6954.8

6800 TVD (-2056 SS)	MD 10216 TVD 6955.38 INC 90.49 AZ 94.4 VS 3806.42	MD 10305 TVD 6954.83 INC 90.22 AZ 94.33 VS 3895.16
ed gy sbbiky - n resd	MRLST (80%): dkgy - v dk gy, rthy, sbbiky - blk, frm-brit, occ dk mnrl spec; CHALK (20%) med gy -dkgy, brn, lt tn mott ip, rthy txt, sbbiky-sbply, arg ip, frm; SH intbds, dk gy, smth - occ rthy, sbbiky - blk, frm-mhd, spty blu grn pri flor, slo-mod fst blng - stmg milky blush wht cut, spttd blu grn resd ring.	MRLST (80%): dkgy - v dk gy, rthy, sbbiky - blk, frm-brit, occ -dkgy, brn, lt tn mott ip, rthy txt, sbbiky-sbply, arg ip, frm; SH blk, frm-mhd, spty blu grn pri flor, slo-mod fst blng - stmg ring.
6900 (-2156)		
7000 (-2256)		

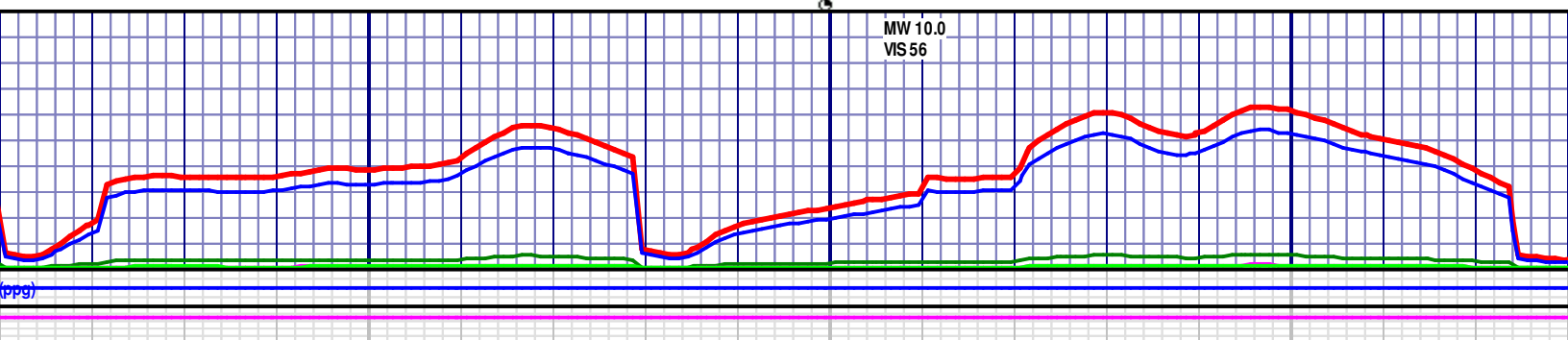


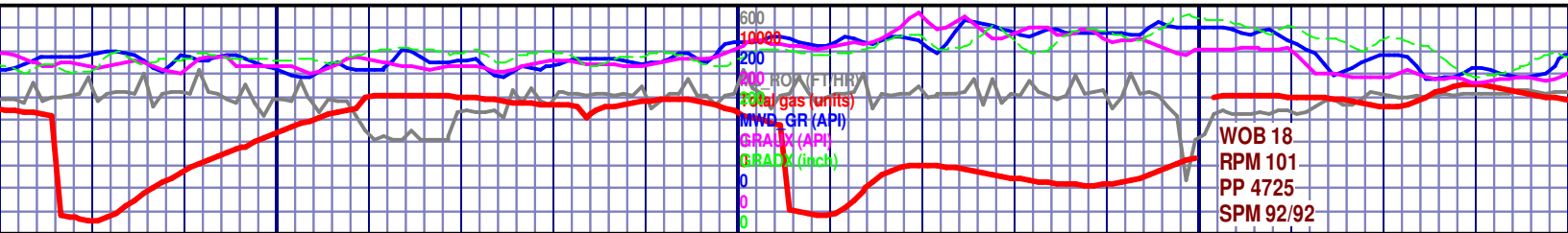


MD 10573 TVD 6954.06 INC 90.15 AZ 88.94 VS 4162.95										6800 TVD (-2056 SS)										MD 10663 TVD 6953.8 INC 90.18 AZ 88.13 VS 4252.92									
rthy, sbblky - blky, frm-brit, occ dk mnrl spec; CHALK (15%) med gy t, sbblky-sbplty, arg ip, frm; SH intbds, dk gy, smth - occ rthy, sbblky - pri flor, slo-mod fst blmg - stmg mlky blush wht cut, spttd blu grn resd										MRLST (90%): dkgy - v dk gy, rthy, sbblky - blky, frm-brit, occ dk mnrl spec; CHALK (10%) med gy -dkgy, brn, lt tn mott ip, rthy txt, sbblky-sbplty, arg ip, frm; sm intbd SH, spty blu grn pri flor, slo-mod fst blmg - stmg mlky blush wht cut, spttd blu grn resd ring.																			



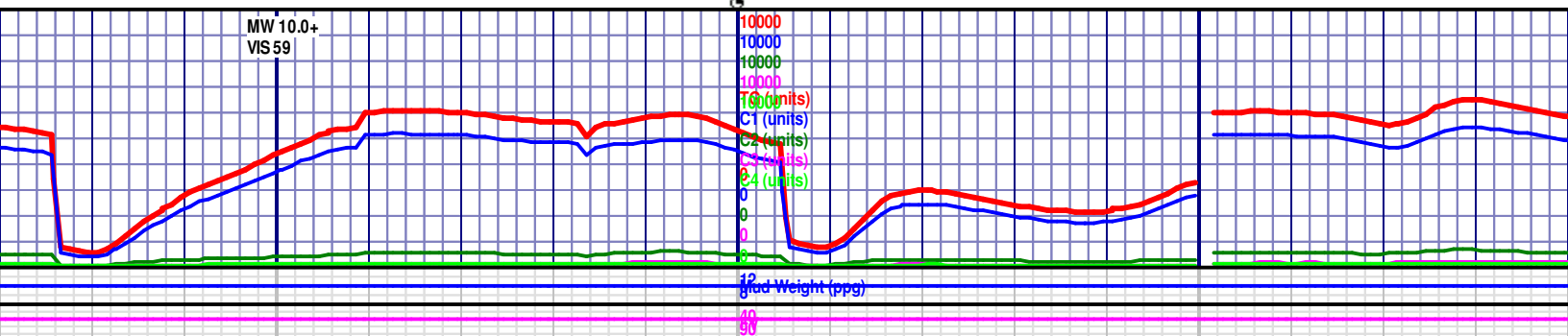
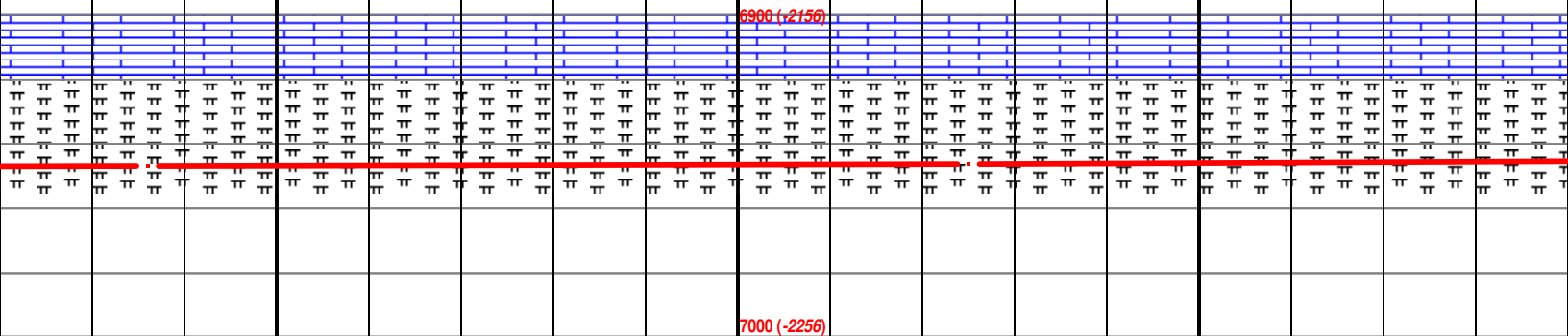
<p>MD 6952.2 89.35</p> <p>5%): dkgy - v dk gy, rthy, sbblky - blk, frm-brit, occ dk mnrl spec; CHALK (15%) med gy, It tn mott ip, rthy txt, sbblky-sbply, arg ip, frm; SH intbds, dk gy, smth - occ rthy, sbblky - mhd, sppty blu grn pri flor, slo-mod fst blmg - stmg mlky blush wht cut, spttd blu grn resd</p>	<p>MD 11289 TVD 6952.15 INC 90.15 AZ 90.05 VS 4878.39</p> <p>MRLST (85%): dkgy - v dk gy, rthy, sbblky - blk, frm-brit, occ dk mnrl spec; C gy -dkgy, brn, It tn mott ip, rthy txt, sbblky-sbply, arg ip, frm; SH intbds, dk gy, sbblky - blk, frm-mhd, sppty blu grn pri flor, slo-mod fst blmg - stmg mlky blu blu grn resd ring.</p>
------------------------------------------------------------------------------------------------------------------------------------------------------------------------------------------------------------------------------------------------------------------------------------------------------------------------	-------------------------------------------------------------------------------------------------------------------------------------------------------------------------------------------------------------------------------------------------------------------------------------------------------------------------------------------------------------

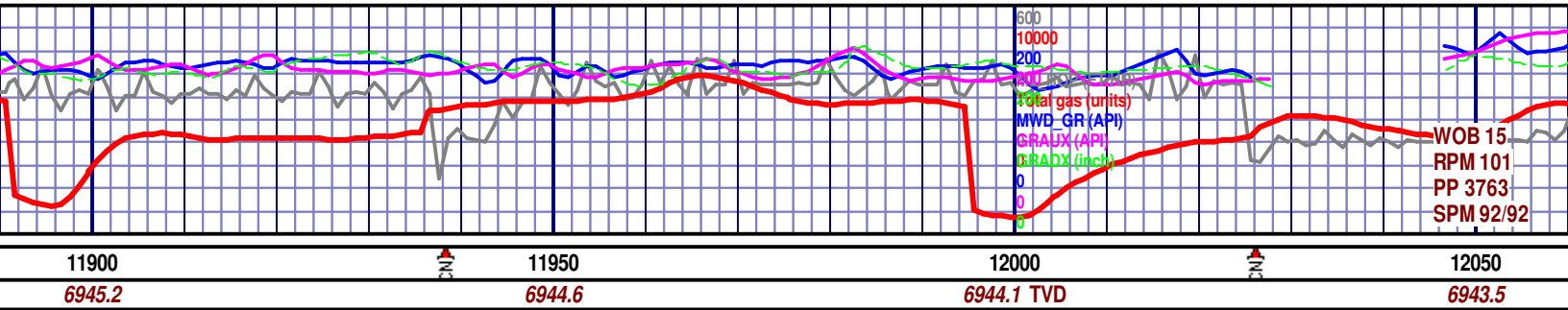




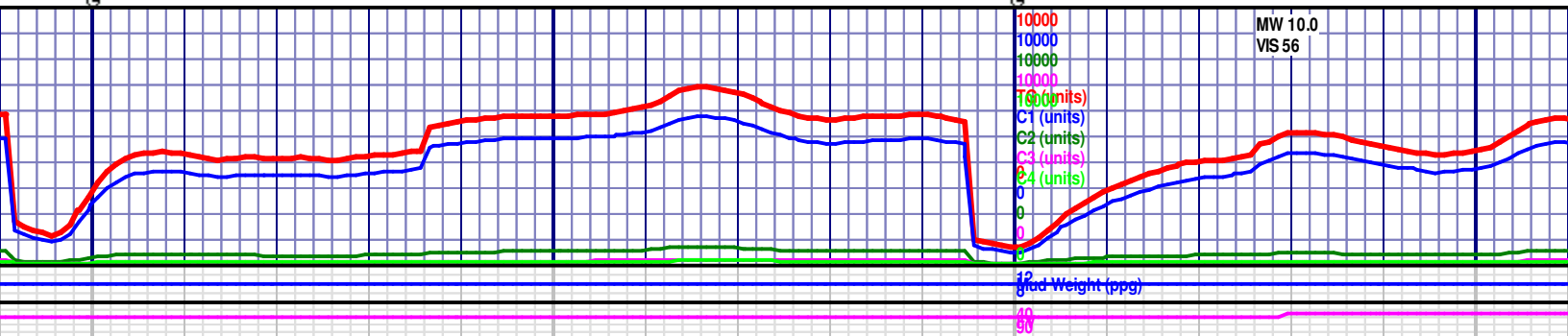
11750 6946.7 11800 6946.3 TVD 11850 6945.8

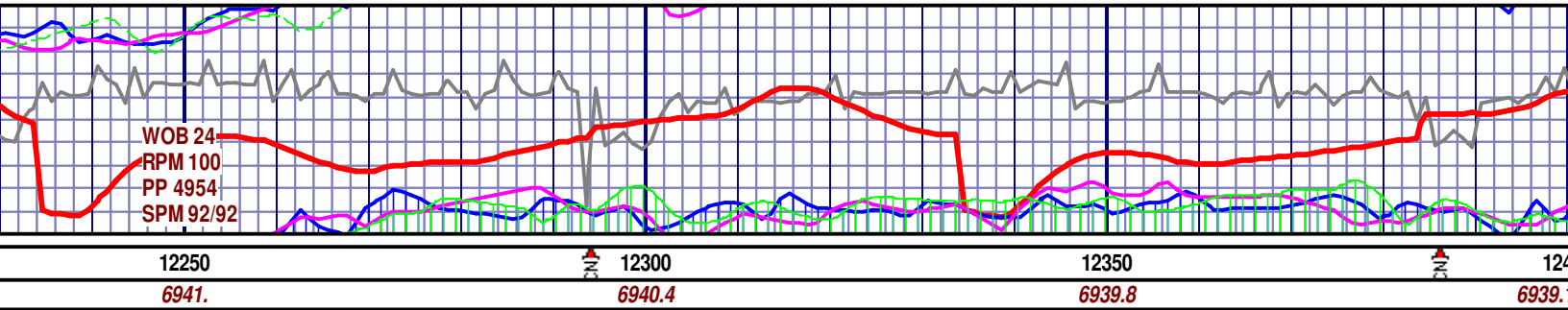
MD 11736 TVD 6946.81 INC 90.43 AZ 89.95 VS 5325.34	6800 TVD (-2056 SS)	MD 11825 TVD 6946.05 INC 90.55 AZ 89.43 VS 5414.34
dkgy - v dk gy, rthy, sbblky - blkgy, frm-brit, occ dk mnrl spec, rr pyr clust; CHALK dkgy, brn, lt tn mott ip, rthy txt, sbblky-sbply, arg ip, frm; SH intbds, dk gy, smth - - blkgy, frm-mhd, spty blu grn pri flor, slo-mod fst blmg - stmg mlky blush wht n resd ring.	MRLST (75%): dkgy - v dk gy, rthy, sbblky - blkgy, frm-brit, occ dk mnrl spec, rr pyr clust; CHALK (25%) med gy -dkgy, brn, lt tn mott ip, rthy txt, sbblky-sbply, arg ip, frm; SH intbds gy, smth - occ rthy, sbblky - blkgy, frm-mhd, spty blu grn pri flor, slo-mod fst blmg - stmg blush wht cut, spttd blu grn resd ring.	



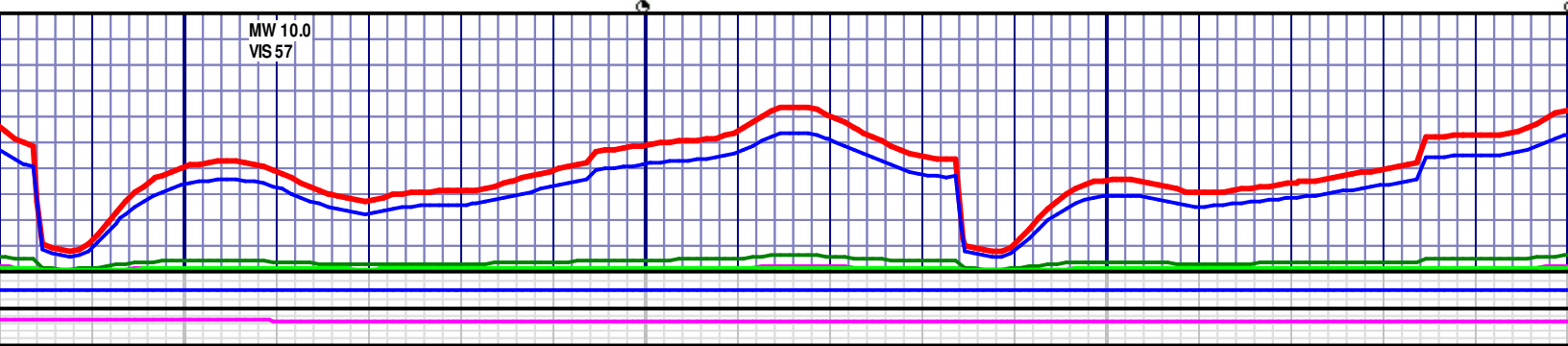


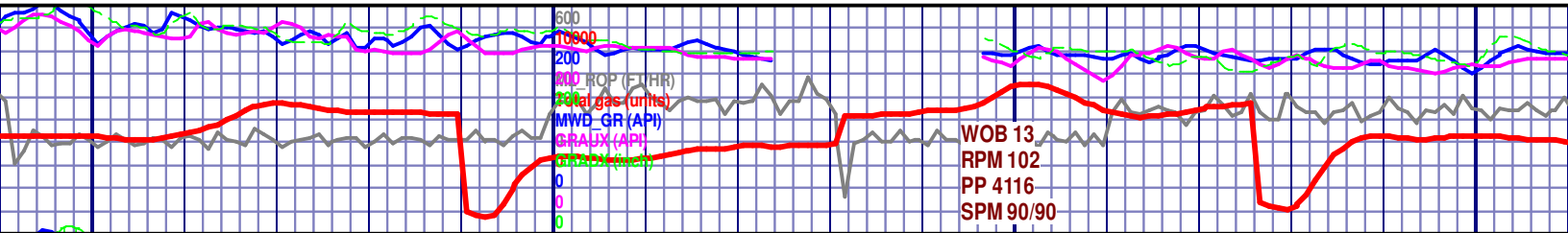
MD 11914 TVD 6945.03 INC 90.77 AZ 89.06 VS 5503.32										6800 TVD 12004 TVD 6944.04 INC 90.49 AZ 89.33 VS 5593.3																													
MRLST (75%): dkgy - v dk gy, rthy, sbblky - blkly, frm-brit, occ dk mnrl spec, rr pyr clust; CHALK (25%) med gy -dkgy, brn, lt tn mott ip, rthy txt, sbblky-sbply, arg ip, frm; SH intbds, dk gy, smth - occ rthy, sbblky - blkly, frm-mhd, spty blu grn pri flor, slo-mod fst blmg - stmg mlky blush wht cut, spttd blu grn resd ring.																				MRLST (75%): dkgy - v dk gy, rthy, sbblky - blkly, frm-brit, c (25%) med gy -dkgy, brn, lt tn mott ip, rthy txt, sbblky-sbply occ rthy, sbblky - blkly, frm-mhd, spty blu grn pri flor, slo- cut, spttd blu grn resd ring.																			
s, dk mlky																																							
6900 (-2156)																																							
7000 (-2256)																																							





<p>y, rthy, sbblky - blk, frm-brit, occ dk mnrl spec, rr pyr clust, occ cal & (15%) med gy -dkgy, brn, lt tn mott ip, rthy txt, sbblky-sbply, arg ip, -occ rthy, sbblky - blk, frm-mhd, sptty blu grn pri flor, slo-mod fst cut, spttd blu grn resd ring.</p>	<p>MD 12272 TVD 6940.75 INC 90.71 AZ 93.07 VS 5861.16</p>	<p>MRLST (90%): dkgy - v dk gy, rthy, sbblky - blk, frm-brit, occ dk mnrl spec, rr pyr clust, occ cal & arog (poss frac fil); CHALK (10%) med gy -dkgy, brn, lt tn mott ip, rthy txt, sbblky-sbply, arg ip, frm; SH intbds, dk gy, smth - occ rthy, sbblky - blk, frm-mhd, sptty blu grn pri flor, slo-mod fst blmg - stmg mlky blush wht cut, spttd blu grn resd ring.</p>	<p>MD 12362 TVD 6939.61 INC 90.74 AZ 92.59 VS 5951.05</p>
-------------------------------------------------------------------------------------------------------------------------------------------------------------------------------------------------------------------------------------------------------------------	-------------------------------------------------------------------	---------------------------------------------------------------------------------------------------------------------------------------------------------------------------------------------------------------------------------------------------------------------------------------------------------------------------------------------------------------------------------	-------------------------------------------------------------------





12750 12800 12850 12900
6935.1 6934.6 TVD 6934. 6933.5

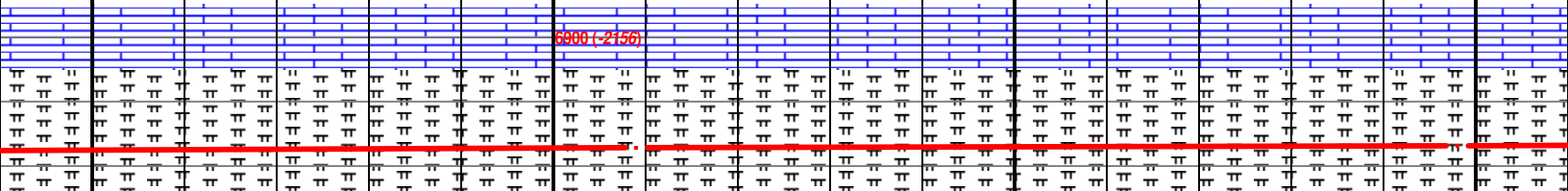
6800 TVD (-2156) MD 12809 TVD 6934.46
INC 90.74 AZ 92.6
VS 6397.77

MD 12898 TVD
INC 90.49 AZ 92.6
VS 6486.64

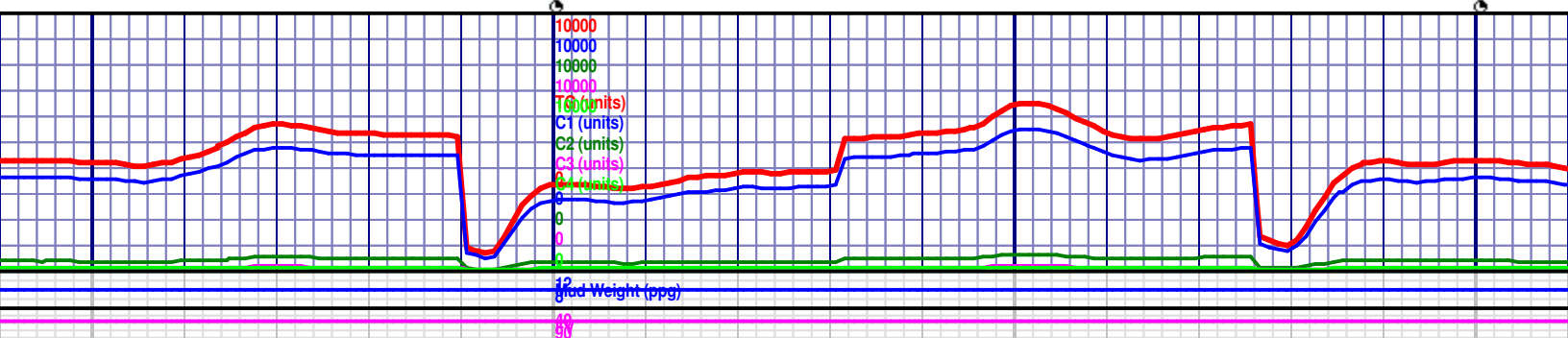
obblky - blkly, frm-brit, occ dk mnrl spec, rr pyr clust; CHALK
rthy txt, sbblky-sbply, arg ip, frm; SH intbds, dk gy, smth -
ty blu grn pri flor, slo-mod fst blmg - stmg mlky blush wht

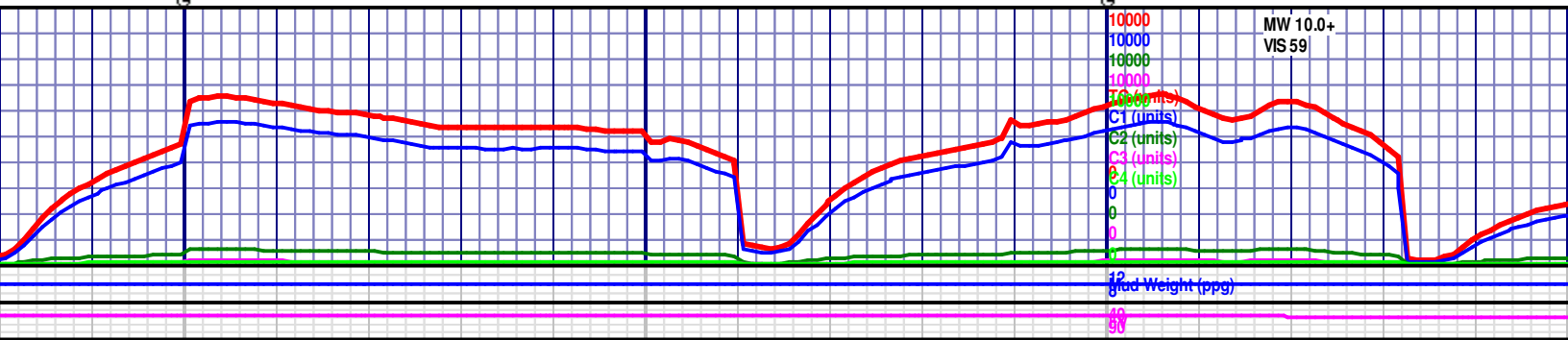
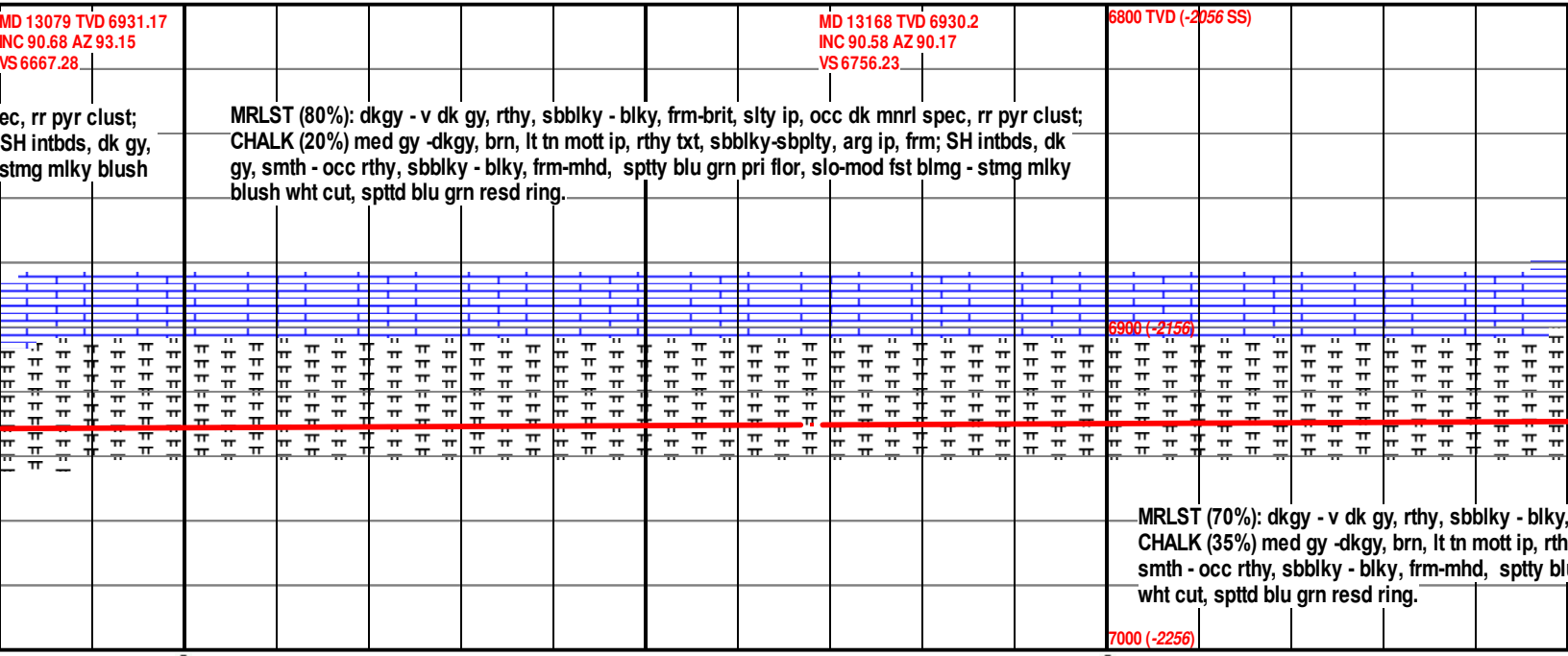
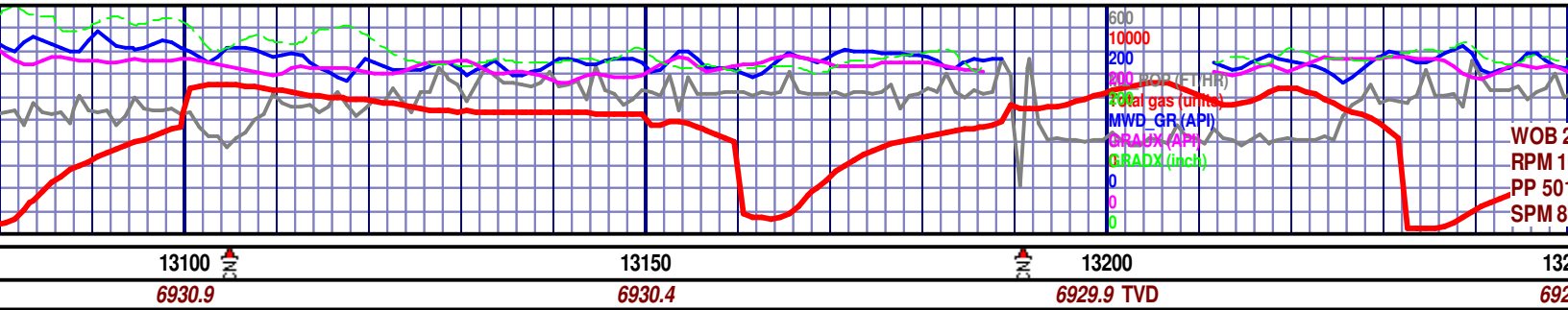
MRLST (75%): dkgy - v dk gy, rthy, sbblky - blkly, frm-brit, slty ip, occ dk mnrl spec, rr pyr clust;
CHALK (25%) med gy -dkgy, brn, lt tn mott ip, rthy txt, sbblky-sbply, arg ip, frm; SH intbds, dk gy,
smth - occ rthy, sbblky - blkly, frm-mhd, spity blu grn pri flor, slo-mod fst blmg - stmg mlky blush
wht cut, spstd blu grn resd ring.

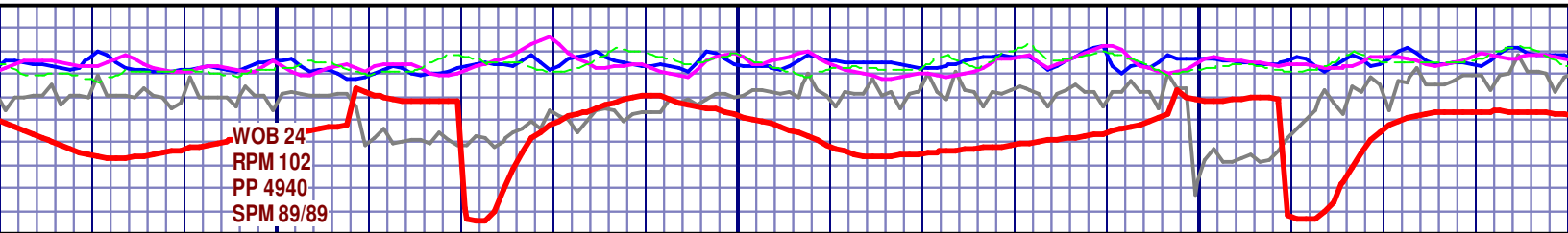
MRLST
CHALK
smth -
wht cut



7000 (-2256)







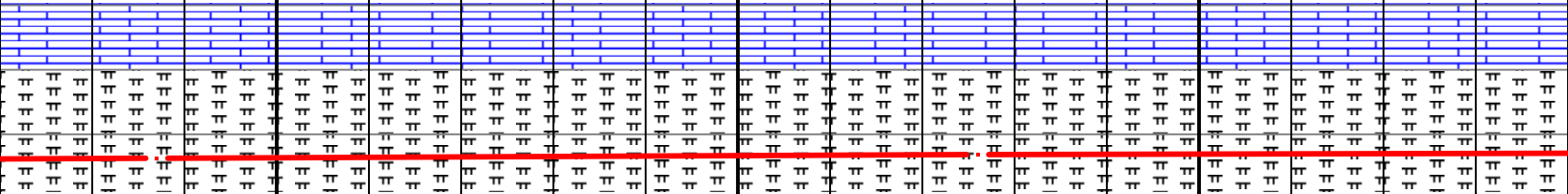
13450
6927.2

13500
6926.8

13550
6926.3

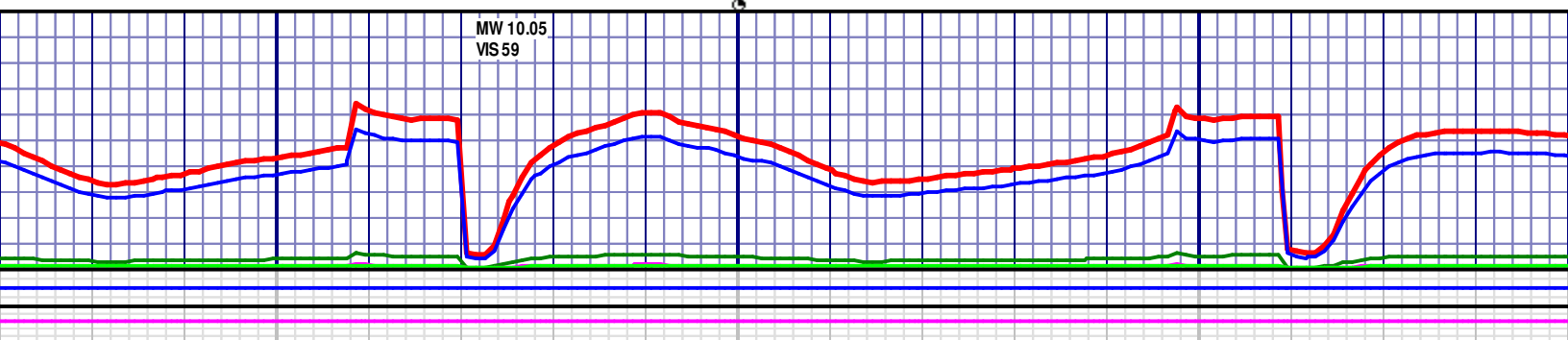
MD 13437 TVD 6927.36
INC 90.58 AZ 89.2
VS 7025.16

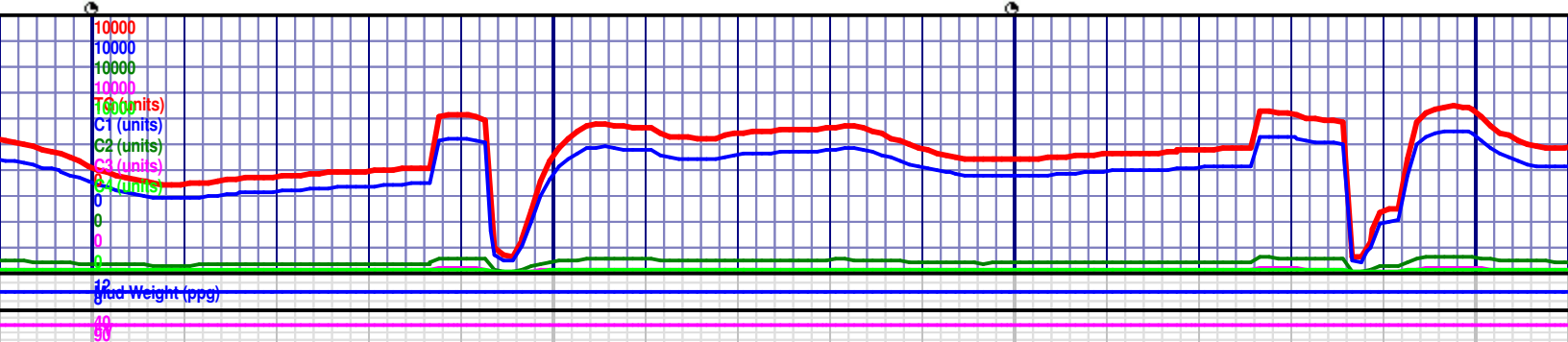
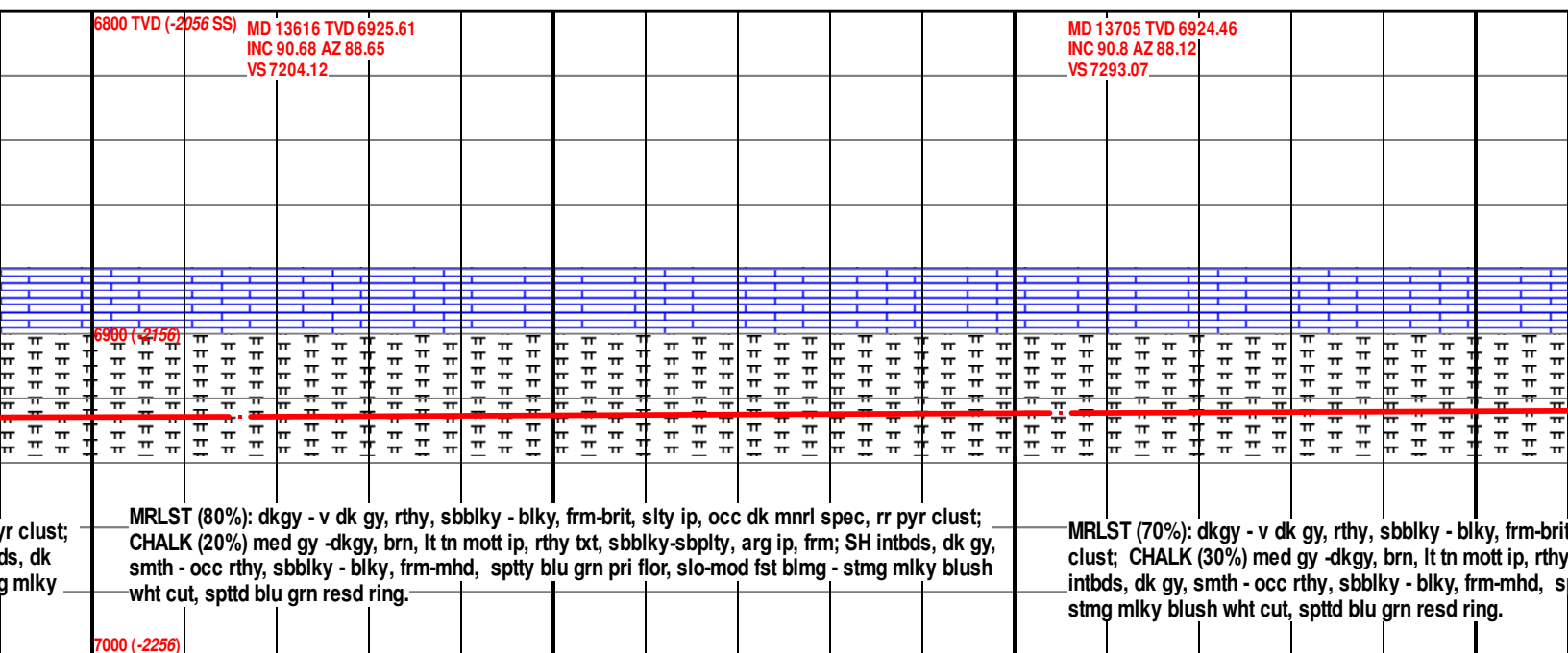
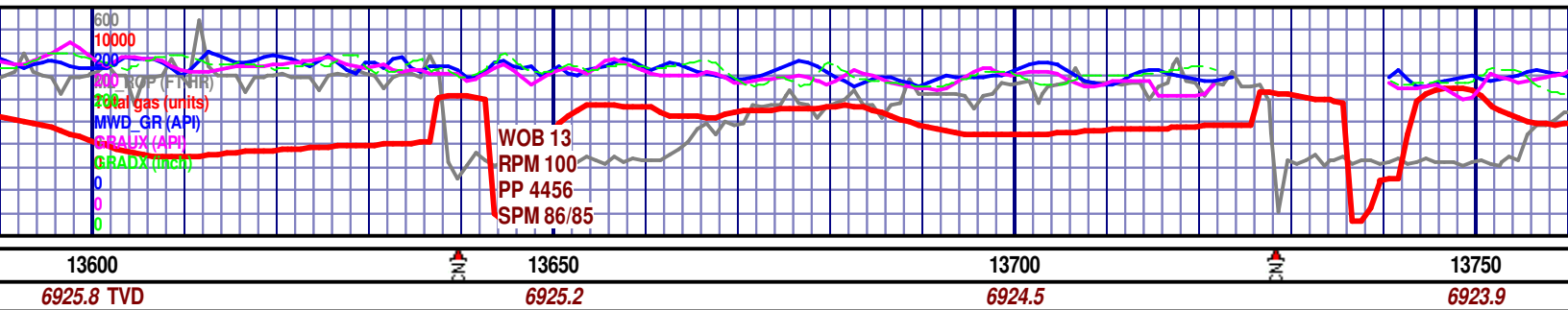
MD 13526 TVD 6926.53
INC 90.49 AZ 88.94
VS 7114.14

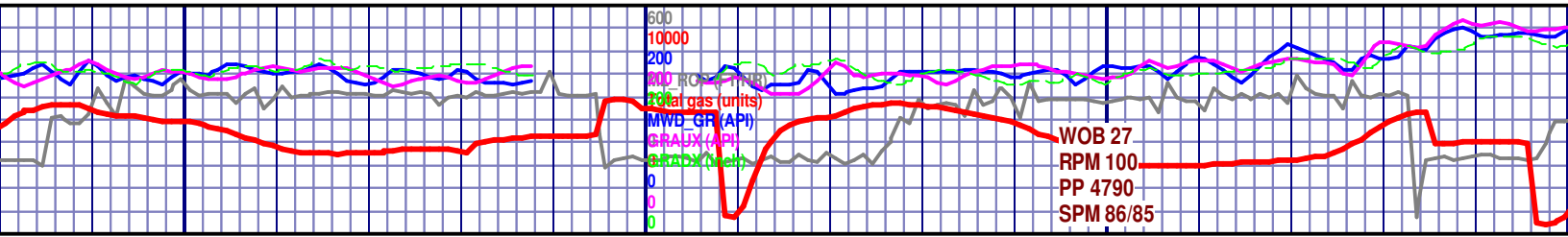


gy - v dk gy, rthy, sbblky - blk, frm-brit, slty ip, occ dk mnrl spec, rr pyr clust;
d gy -dkgy, brn, lt tn mott ip, rthy txt, sbblky-sbply, arg ip, frm; SH intbds, dk gy,
sbblky - blk, frm-mhd, spty blu grn pri flor, slo-mod fst blmg - stmg mlky blush
grn resd ring.

MRLST (80%): dkgy - v dk gy, rthy, sbblky - blk, frm-brit, slty ip, occ dk mnrl spec, rr pyr
CHALK (20%) med gy -dkgy, brn, lt tn mott ip, rthy txt, sbblky-sbply, arg ip, frm; SH intbds,
gy, smth - occ rthy, sbblky - blk, frm-mhd, spty blu grn pri flor, slo-mod fst blmg - stmg
blush wht cut, spttd blu grn resd ring.







13950

6921.6

14000

6921. TVD

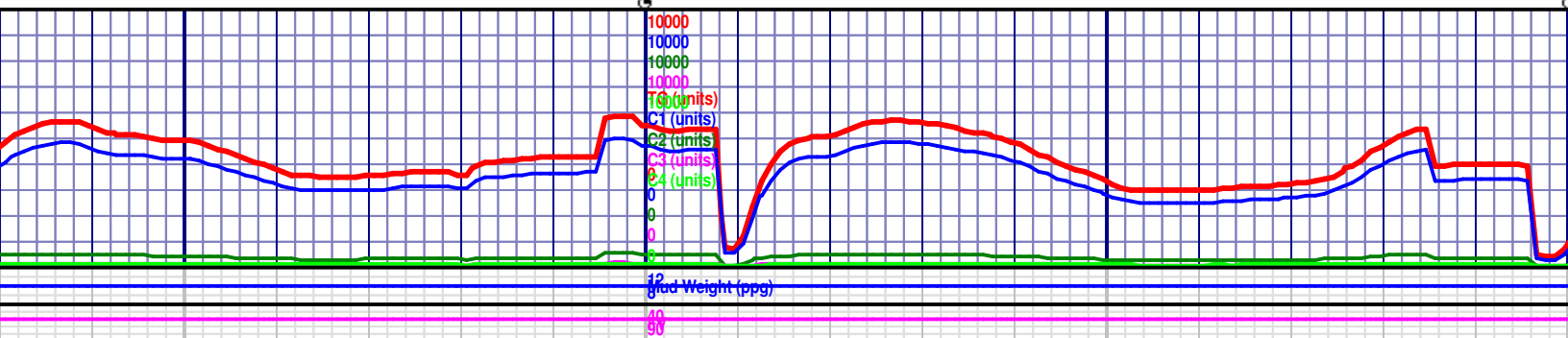
14050

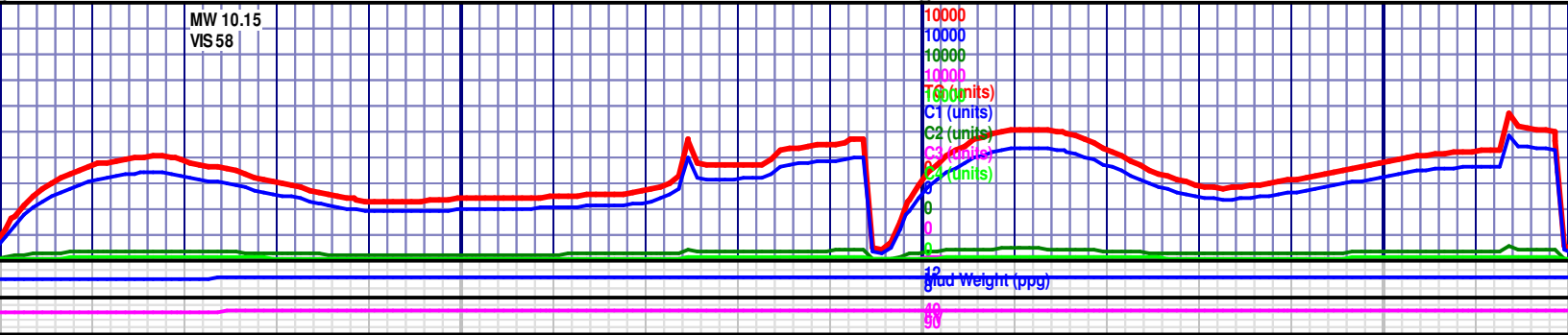
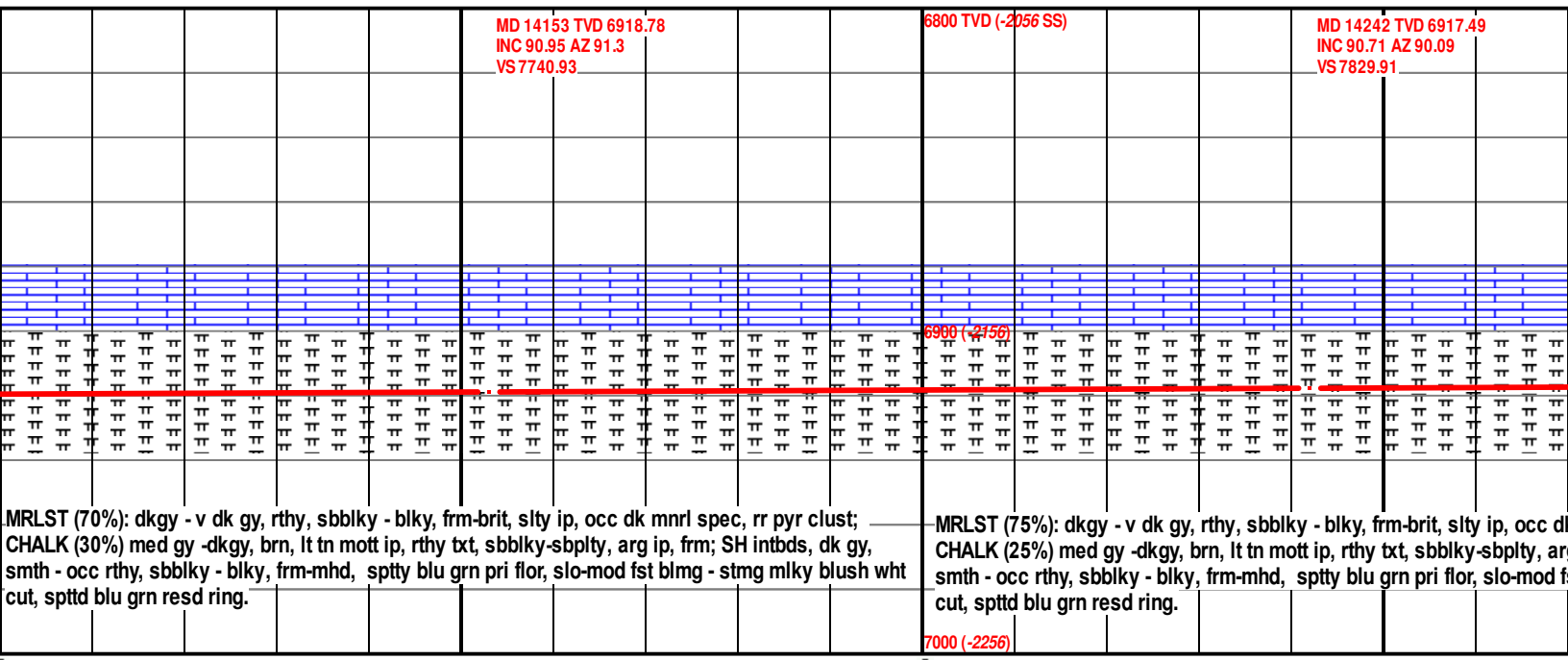
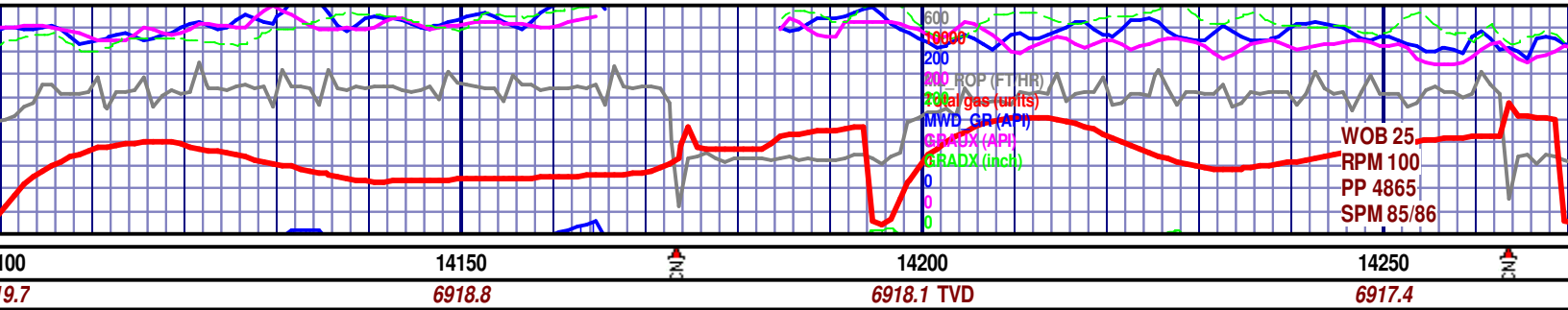
6920.4

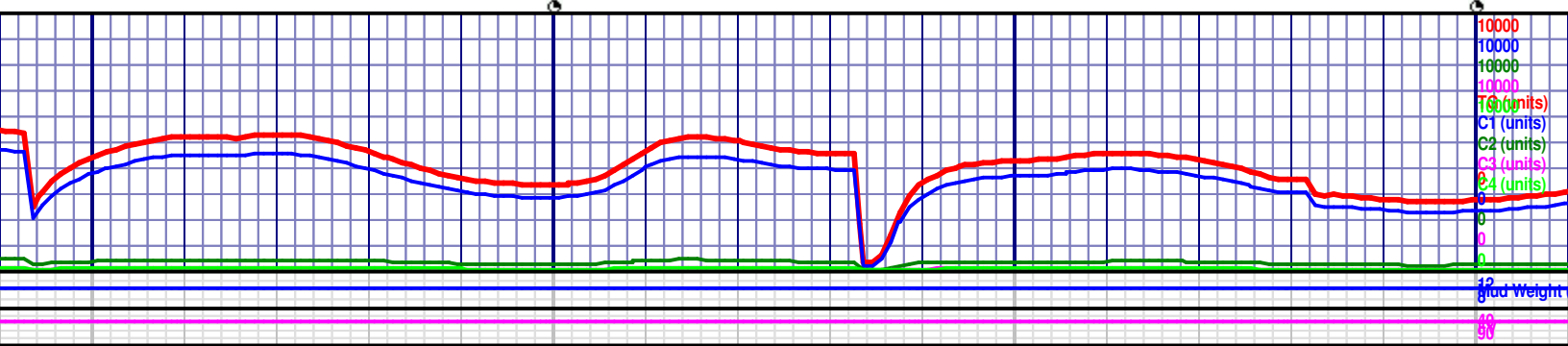
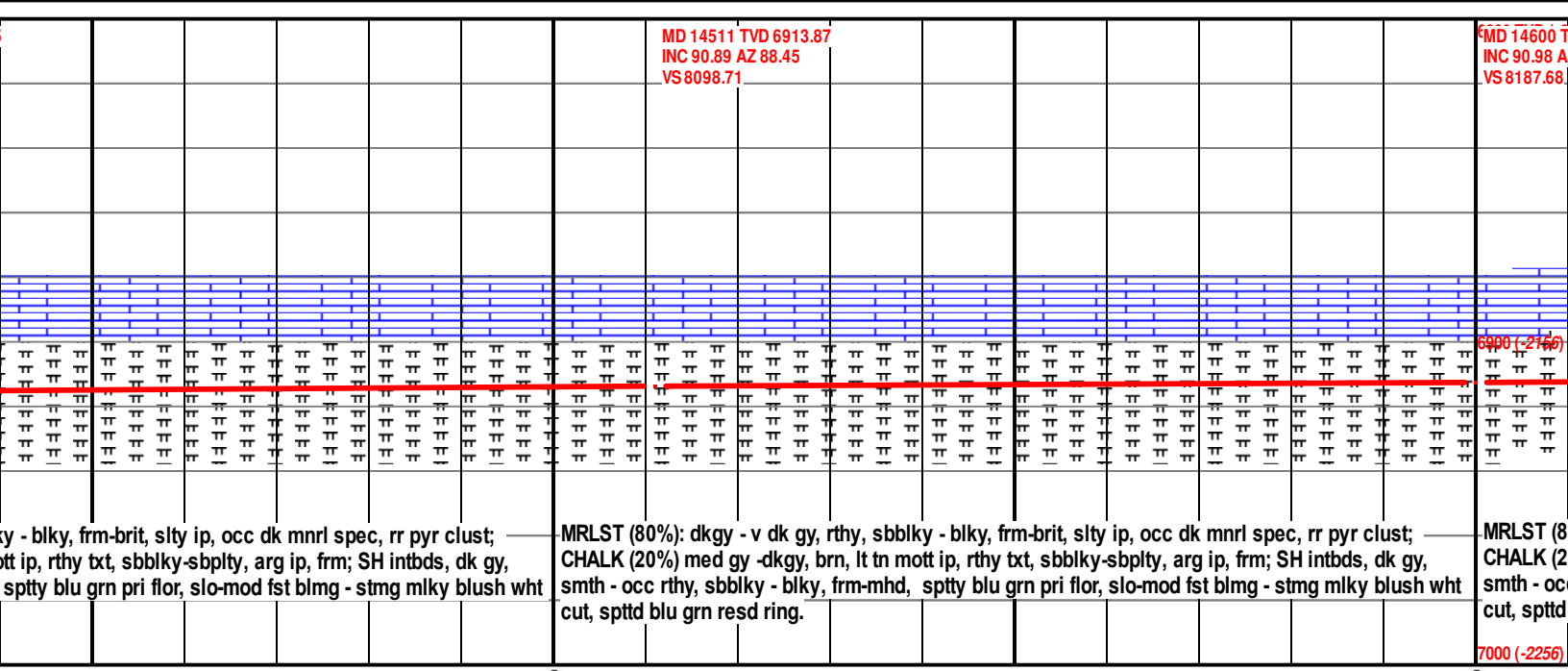
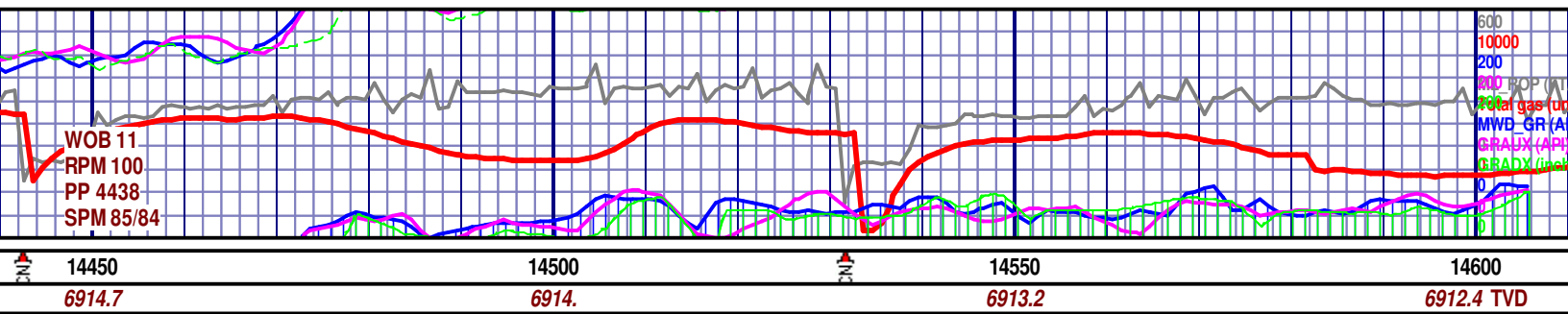
14100

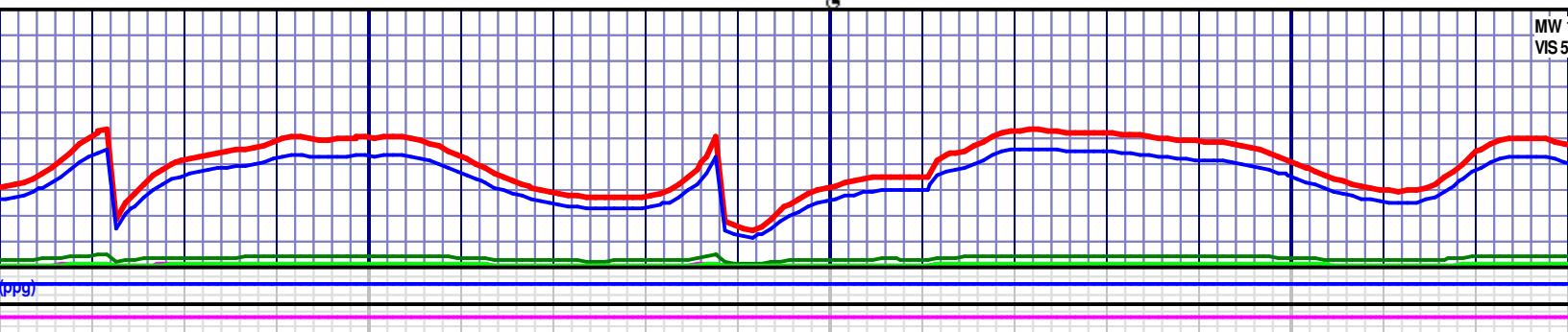
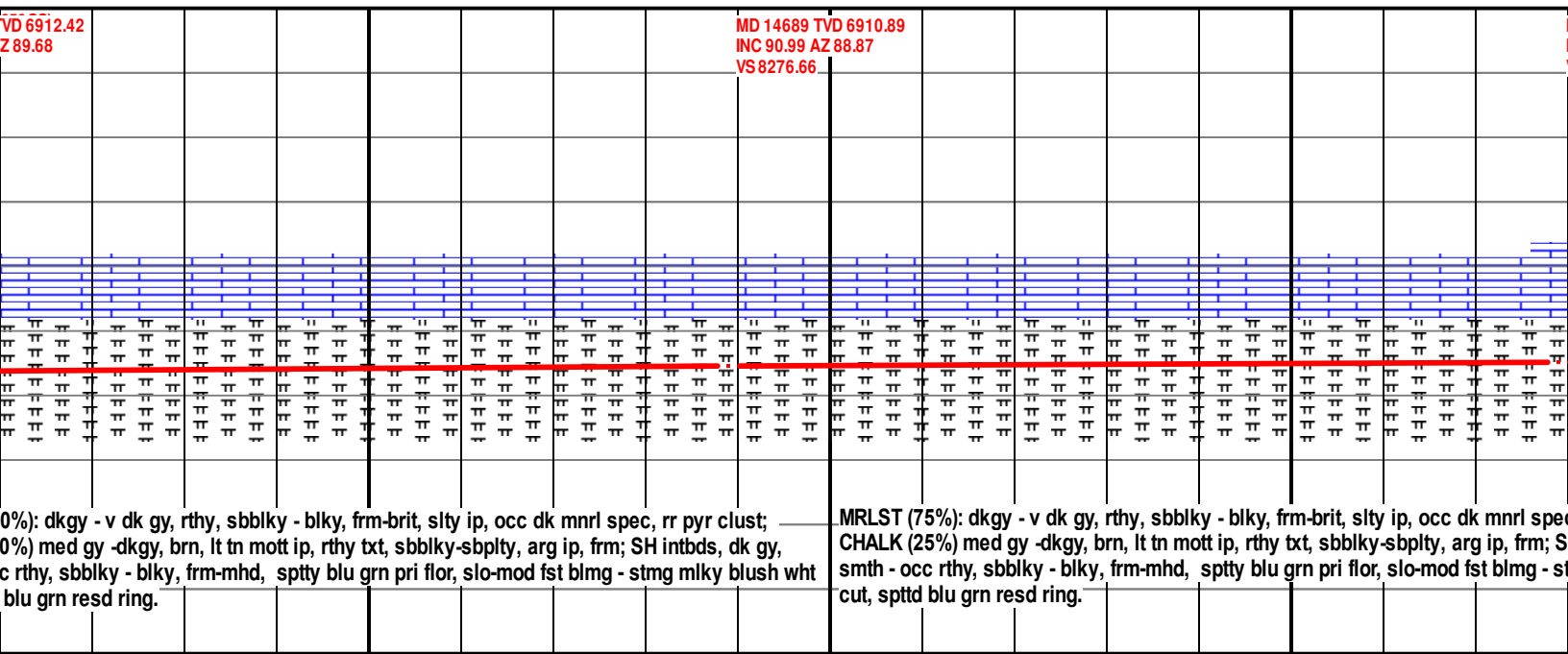
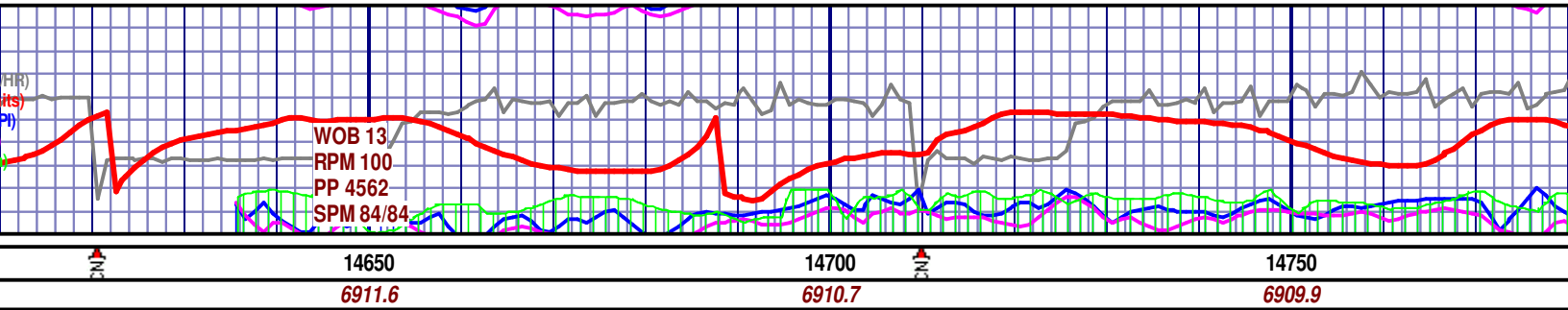
6920.0

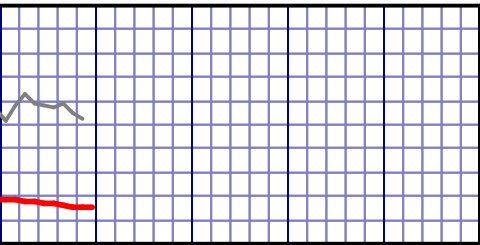
MD 13974 TVD 6921.35 INC 90.52 AZ 91.68 VS 7561.99																														6800 TVD (-2056 SS)																														MD 14063 TVD 6920.27 INC 90.95 AZ 91.38 VS 7650.97																													











950- 15
6.3 T

	Formatin Top's		
	MD	TVD	SSD
Sharon Springs	7167'	6822'	-2078'
Niobrara A Chalk	7234'	6857'	-2113'
Target Heel	7531'	6935'	-2191'
Target Toe	14,960'	6906'	-2162'
Final Survey is Projected to Bit.			
TD @ 14,960' MD on 09/05/18			
m-brit,			
(%) med gy			
ip, frm;			
n-mhd,			
blush wht			
Thank You Goolsby Brothers & Assoc. Inc			

