

HALLIBURTON

iCem[®] Service

SRC ENERGY INC

Troudt 8C-23-M Production

Sincerely,
Meghan Jacobs

Legal Notice

Disclaimer:

All information in this report is provided subject to the terms and conditions which govern the services provided by Halliburton. Halliburton personnel use their best efforts in gathering information and their best judgment in interpreting it, but any interpretation, research, analysis or recommendation furnished by Halliburton are opinions based upon inferences from measurements and empirical relationships and assumptions, which inferences and empirical relationships and assumptions are not infallible, and with respect to which professionals in the industry may differ. iCem 3D Displacement results are used to understand how fluids intermix during a cement job. Simulation and 3D displacement results are not intended as and should not be used as a replacement for bond logs in determining top of cement. Current 3D model calculations are known to model more volume than the input volume for standard cases due to known calculation improvements required. For rotational cases, the modeled volume will be impacted by the same calculations impacting the standard cases, as well as additional constraints imposed to make the calculation time required operationally feasible. Therefore, until further notice, 3D displacement results should not be used for replacement of a bond log, or used as an identifier of top of cement. HALLIBURTON IS UNABLE TO GUARANTEE THE ACCURACY OF ANY CHART INTERPRETATION, RESEARCH ANALYSIS, OR JOB RECOMMENDATION and any interpretation or recommendation is not for use of or reliance upon by any third party. The customer has full responsibility for any of its decisions which are based on the information provided in this report.

Table of Contents

1.0 Cementing Job Summary 4

 1.1 Executive Summary4

2.0 Real-Time Job Summary 7

 2.1 Job Event Log7

3.0 Attachments..... 9

 3.1 Troudt 8C-23-M Production – Job Chart with Events.....9

 3.2 Troudt 8C-23-M Production – Job Chart without Events10

1.0 Cementing Job Summary

1.1 Executive Summary

Halliburton appreciates the opportunity to perform the cementing services on the **Troudt 8C-23-M** cement **Production** casing job. A pre-job safety meeting was held before the job where details of the job were discussed, potential safety hazards were reviewed, and environmental compliance procedures were outlined.

Approximately 20bbbls of cement returned to surface.

Halliburton maintains a continuous quality improvement process and appreciates any comments or suggestions that you may have. Halliburton again thanks you for the opportunity to perform service work on this well. We hope to be your solutions provider for future projects.

Respectfully,

Halliburton [Ft. Lupton]

HALLIBURTON

Cementing Job Summary

The Road to Excellence Starts with Safety

Sold To #: 359915	Ship To #: 3851177	Quote #:	Sales Order #: 0905102774							
Customer: SRC ENERGY INC-EBUS		Customer Rep: KALIB FORD								
Well Name: TROUDT	Well #: 8C-23-M	API/UWI #: 05-123-46244-00								
Field: WATTENBERG	City (SAP): LUCERNE	County/Parish: WELD	State: COLORADO							
Legal Description: NE NW-27-6N-66W-760FNL-1715FWL										
Contractor: PRECISION DRLG		Rig/Platform Name/Num: PRECISION 562								
Job BOM: 7523 7523										
Well Type: HORIZONTAL OIL										
Sales Person: HALAMERICA\HB41307		Srv Supervisor: Vitali Neverdasov								
Job										
Formation Name										
Formation Depth (MD)	Top	Bottom								
Form Type	BHST									
Job depth MD	15119ft	Job Depth TVD	7114							
Water Depth		Wk Ht Above Floor								
Perforation Depth (MD)	From	To								
Well Data										
Description	New / Used	Size in	ID in	Weight lbm/ft	Thread	Grade	Top MD ft	Bottom MD ft	Top TVD ft	Bottom TVD ft
Casing		9.625	8.921	36	LTC	J-55	0	1809	0	1809
Casing	0	5.5	4.778	20	TXP-BTC	P110IC	0	15119	0	7114
Open Hole Section			8.5				1809	15140	1809	7114
Tools and Accessories										
Type	Size in	Qty	Make	Depth ft		Type	Size in	Qty	Make	
Guide Shoe	5.5					Top Plug	5.5	1	WHED	
Float Shoe	5.5	1	N/A	15119		Bottom Plug	5.5	1	WHED	
Float Collar	5.5	1	N/A	15011		SSR plug set	5.5			
Insert Float	5.5					Plug Container	5.5	1	HES	
Stage Tool	5.5					Centralizers	5.5	214	HES	
Fluid Data										
Stage/Plug #: 1										
Fluid #	Stage Type	Fluid Name	Qty	Qty UoM	Mixing Density lbm/gal	Yield ft3/sack	Mix Fluid Gal	Rate bbl/min	Total Mix Fluid Gal	
1	Tuned Spacer III	Tuned Spacer III	40	bbl	11.5	3.86		4		
Fluid #	Stage Type	Fluid Name	Qty	Qty UoM	Mixing Density lbm/gal	Yield ft3/sack	Mix Fluid Gal	Rate bbl/min	Total Mix Fluid Gal	
2	ElastiCem	ELASTICEM (TM) SYSTEM	1216	sack	13.2	1.57		8	7.54	

last updated on 9/7/2018 10:41:26 AM

Page 1 of 3

HALLIBURTON

Cementing Job Summary

Fluid #	Stage Type	Fluid Name	Qty	Qty UoM	Mixing Density lbm/gal	Yield ft3/sack	Mix Fluid Gal	Rate bbl/min	Total Mix Fluid Gal
3	NeoCem	NeoCem TM	850	sack	13.2	2.04		8	9.77
Fluid #	Stage Type	Fluid Name	Qty	Qty UoM	Mixing Density lbm/gal	Yield ft3/sack	Mix Fluid Gal	Rate bbl/min	Total Mix Fluid Gal
4	MMCR Displacement	MMCR Displacement	20	bbl	8.34			8	
0.2220 gal/bbl		MICRO MATRIX CEMENT RETARDER, 5 GAL PAIL (100003781)							
Fluid #	Stage Type	Fluid Name	Qty	Qty UoM	Mixing Density lbm/gal	Yield ft3/sack	Mix Fluid Gal	Rate bbl/min	Total Mix Fluid Gal
5	Clay-web Displacement	Clay-web Displacement	297	bbl	8.33			8	
1 gal/bbl		CLA-WEB - BULK (101985043)							
Fluid #	Stage Type	Fluid Name	Qty	Qty UoM	Mixing Density lbm/gal	Yield ft3/sack	Mix Fluid Gal	Rate bbl/min	Total Mix Fluid Gal
6	MMCR Displacement	MMCR Displacement	70	bbl	8.34			8	
0.20 gal/bbl		MICRO MATRIX CEMENT RETARDER, 5 GAL PAIL (100003781)							
Cement Left In Pipe		Amount	0 ft		Reason			WET SHOE	
Comment : 20 BBLs OF CEMENT BACK TO SURFACE. ESTIMATED TOP OF TAIL @ 7570'									

2.0 Real-Time Job Summary

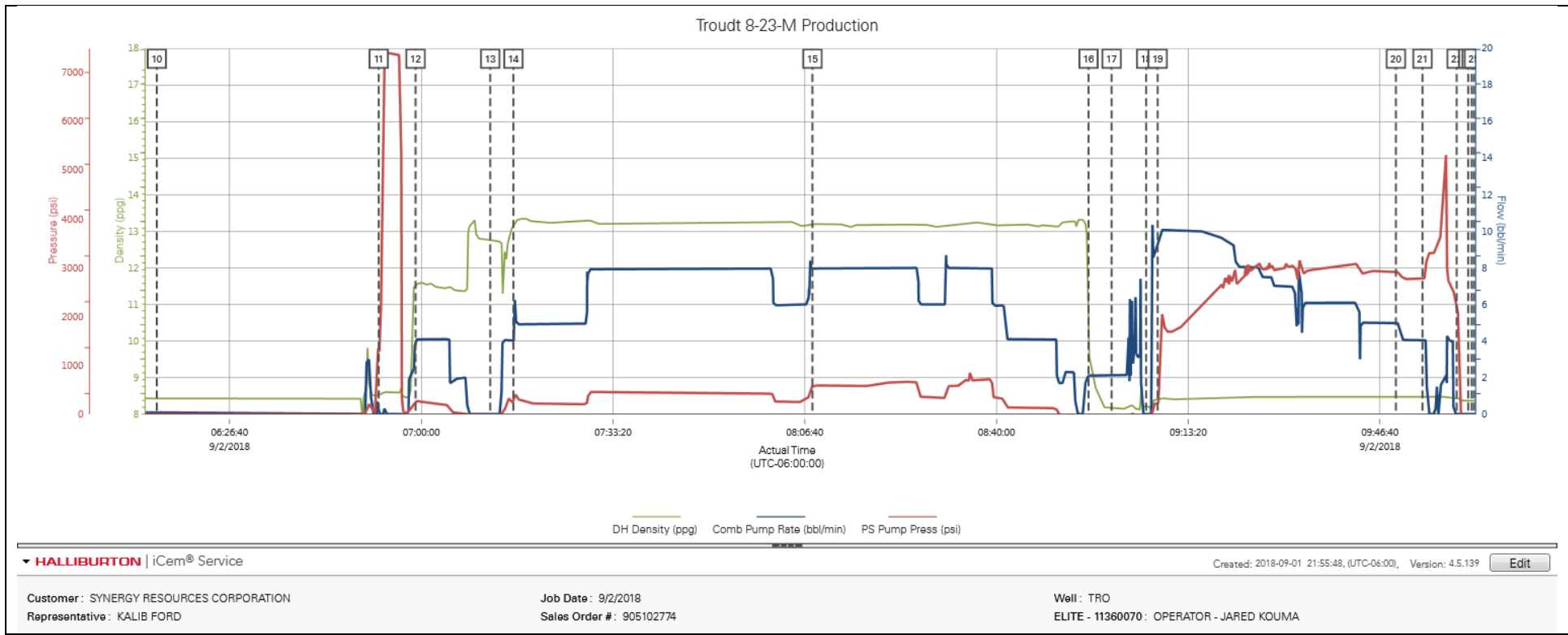
2.1 Job Event Log

Type	Seq. No.	Activity	Graph Label	Date	Time	Source	DH Density (ppg)	Comb Pump Rate (bbl/min)	PS Pump Press (psi)	Comments
Event	1	Call Out	Call Out	9/1/2018	21:30:00	USER				For Location @ 04:00
Event	2	Depart Yard Safety Meeting	Depart Yard Safety Meeting	9/1/2018	22:30:00	USER				Journey management meeting held prior to departure
Event	3	Depart from Service Center or Other Site	Depart from Service Center or Other Site	9/1/2018	23:00:00	USER				Called Journey
Event	4	Arrive at Location from Service Center	Arrive at Location from Service Center	9/2/2018	00:30:00	USER				40 MILES. Discussed numbers and job procedures with Customer. RIG IS RUNNING CASING.
Event	5	Safety Meeting - Pre Rig-Up	Safety Meeting - Pre Rig-Up	9/2/2018	04:00:00	USER				JSA to discuss the hazards of rig-up
Event	6	Rig-Up Equipment	Rig-Up Equipment	9/2/2018	04:05:00	USER				Rig-up all surface lines and equipment up to the Buffer zone
Event	7	Casing on Bottom	Casing on Bottom	9/2/2018	04:45:00	USER				CASING LANDED.
Event	8	Circulate Well	Circulate Well	9/2/2018	04:55:00	USER				RIG IS CIRCULATING THRU CRT
Event	9	Pre-Job Safety Meeting	Pre-Job Safety Meeting	9/2/2018	06:10:00	USER	8.43	0.10	0.00	With all essential personnel, to discuss the hazards of pumping the job, and pump schedule.
Event	10	Start Job	Start Job	9/2/2018	06:14:00	USER	8.43	0.10	0.00	
Event	11	Test Lines	Test Lines	9/2/2018	06:52:36	USER	8.55	0.00	1309.00	Load line with 2 bbls of water. Test lines @ 7281 psi
Event	12	Pump Spacer	Pump Spacer	9/2/2018	06:59:00	USER	11.54	4.10	286.00	BATCH/ WEIGH/PUMP 40 BBLS OF TUNED SPACER WITH SURFACTANS @ 11.5 PPG
Event	13	Drop Bottom Plug	Drop Bottom Plug	9/2/2018	07:11:59	USER	12.75	0.00	-15.00	Pre-loaded bottom plug in plug container.
Event	14	Pump Lead Cement	Pump Lead Cement	9/2/2018	07:16:00	USER	13.18	4.10	237.00	BATCH/ WEIGHT/ PUMP 1216 SKS (340 BBLS) OF ELASTICEM @ 13.2 PPG.
Event	15	Pump Tail Cement	Pump Tail Cement	9/2/2018	08:08:00	USER	13.19	8.00	576.00	WEIGH/ PUMP 850 SKS (308 BBLS) OF NEOCEM @ 13.2 PPG

Event	16	Shutdown	Shutdown	9/2/2018	08:56:00	USER	9.79	2.10	-33.00	Finished pumping cement
Event	17	Clean Lines	Clean Lines	9/2/2018	09:00:00	USER	8.17	2.10	-76.00	Wash pumps and lines
Event	18	Drop Top Plug	Drop Top Plug	9/2/2018	09:06:00	USER	8.20	0.00	-92.00	Pre-loaded top plug in plug container.
Event	19	Pump Displacement	Pump Displacement - Start	9/2/2018	09:08:00	USER	8.38	9.00	209.00	332.9 bbls fresh water. FIRST 20 BBLS WITH 5 GAL MMCR. REMAINING WITH CLAWEB AND BE3. LAST 70 BBLS WITH MMCR.
Event	20	Slow Rate	Slow Rate	9/2/2018	09:49:26	USER	8.46	5.00	2910.00	SLOW RATE TO 4 BPM
Event	21	Bump Plug	Bump Plug	9/2/2018	09:54:03	USER	8.45	4.00	2778.00	BUMP PLUG @ 3078. 500 psi over final circulating pressure.
Event	22	Pump Water	Pump Water	9/2/2018	10:00:00	USER	8.44	0.00	2172.00	PRESSURE UP/ BURST @ 5300 psi, AND PUMP 5 BBLS WET SHOE.
Event	23	Shutdown	Shutdown	9/2/2018	10:02:00	USER	8.37	0.00	-83.00	
Event	24	End Job	End Job	9/2/2018	10:02:37	COM4	8.37	0.00	-83.00	
Event	25	Check Floats	Check Floats	9/2/2018	10:03:00	USER	8.37	0.00	-83.00	Floats held. 2.5 bbls back
Event	26	End Job	End Job	9/2/2018	10:05:00	USER	8.36	0.00	-83.00	
Event	27	Pre-Rig Down Safety Meeting	Pre-Rig Down Safety Meeting	9/2/2018	10:10:00	USER	8.36	0.00	-72.00	JSA to discuss the hazards of rig-down

3.0 Attachments

3.1 Troutd 8C-23-M Production – Job Chart with Events



3.2 Troudt 8C-23-M Production – Job Chart without Events

