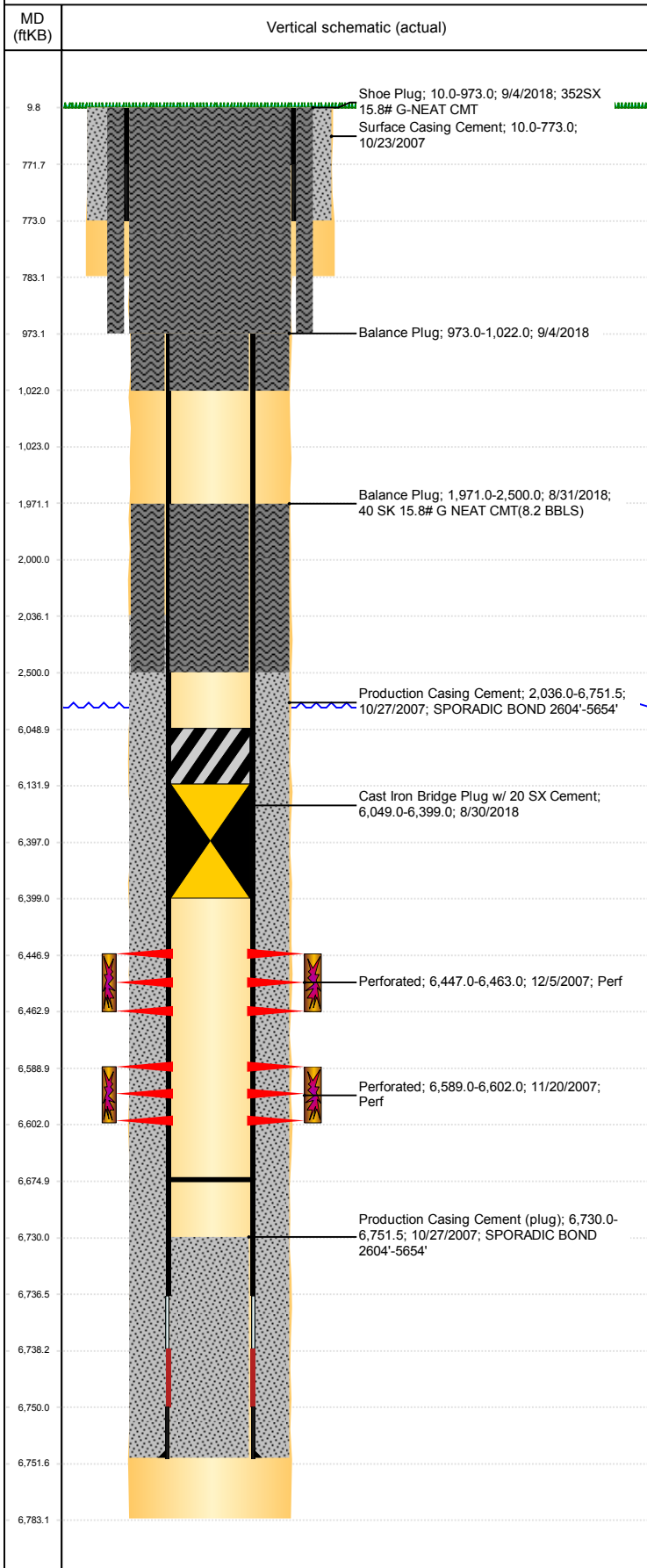


**Well Name: GUTTERSEN USX CC09-08**

VERTICAL, ORIGINAL HOLE, 11/19/2018 3:34:53 PM



Well Header										
API 05-123-26357		Business Unit DJ BASIN			District 15		Well Config VERTICAL			
KB - GL / MSL (ft... 10.00		Spud Date 10/22/2007		P & A Date 9/4/2018		Well Production Status PA			SoRT Yes	
Comment DISCREPANCY: DR RPT SURF CSG @ 773' & 733'; SURF HOLE @ 783'										
Surface Location (Congressional)										
Qtr 3 SE	Qtr 4 NE	Section 9	Twnshp 4	Twnsh... N	Range 63	Rng E/... W	Actual Latitude (°) 40.32844130	Actual Longitude (°) -104.43618455		
Wellbore Sections										
Section Des			Size (in)			Act Top, MD (ftKB)		Act Btm, MD (ftKB)		
SURFACE			12 1/4			10		783		
PRODUCTION			7 7/8			783		6,783		
Casing Strings										
Csg Des			Run Date		OD (in)	Wt/Len (lb/ft)	Grade	Top, MD (ftKB)	MD (ftKB)	
Surface			10/23/2007		8 5/8	24.00	J-55	10.0	773.0	
Production			10/27/2007		4 1/2	11.60	M-80	10.0	6,751.5	
Cement										
Des					Start Date		Top (ftKB)		Btm (ftKB)	
Surface Casing Cement					10/23/2007		10.0		773.0	
Production Casing Cement					10/27/2007		2,036.0		6,751.5	
Balance Plug					8/31/2018		1,971.0		2,500.0	
Balance Plug					9/4/2018		973.0		1,022.0	
Shoe Plug					9/4/2018		10.0		973.0	
Zone Statuses										
Zone Name		Status Date	Status	Fluid Type	Job				Prod Method	
NIOBRARA		2/8/2010	PR	Water	PLUG AND ABANDON, 8/28/2018 00:00				Flowing	
NIOBRARA		8/30/2018	P&A	Water						
CODELL		4/25/2016	PR		PLUG AND ABANDON, 8/28/2018 00:00					
CODELL		8/30/2018	P&A							
Perforation Data										
Linked Zone			Bnch/Stg	Entered Shot Total	Top (ftKB)		Btm (ftKB)		Date	
NIOBRARA, ORIGINAL HOLE			B	32	6,447.00		6,463.00		12/5/2007	
CODELL, ORIGINAL HOLE				52	6,589.00		6,602.00		11/20/2007	
Stimulation Intervals										
Zone				Start Date		Top (ftKB)		Btm (ftKB)		
NIOBRARA, ORIGINAL HOLE				12/5/2007		6,447.0		6,463.0		
CODELL, ORIGINAL HOLE				12/5/2007		6,589.0		6,602.0		
Other In Hole										
Run Date		Des				OD (in)	Top (ftKB)		Btm (ftKB)	
8/30/2018		Cast Iron Bridge Plug w/ 20 SX Cement				4	6,049.0		6,399.0	
Logs										
Date		Type				Top, MD (ftKB)		Btm, MD (ftKB)		
10/26/2007		COMPENSATED DENSITY				2,500.0		6,756.0		
10/26/2007		INDUCTION				773.0		6,776.0		
11/19/2007		CBL/CCL/GR				1,910.0		6,723.0		
6/18/2018		GYRO				10.0		6,500.0		
Plug Back Total Depths										
Date		Type			Com				Depth (ftKB)	
11/19/2007		FILL			DEPTH LOGGER ON CBL				6,730.0	
2/21/2008		PLUG REMNANTS			DRILL CIBP AND PUSH TO 6675'				6,675.0	