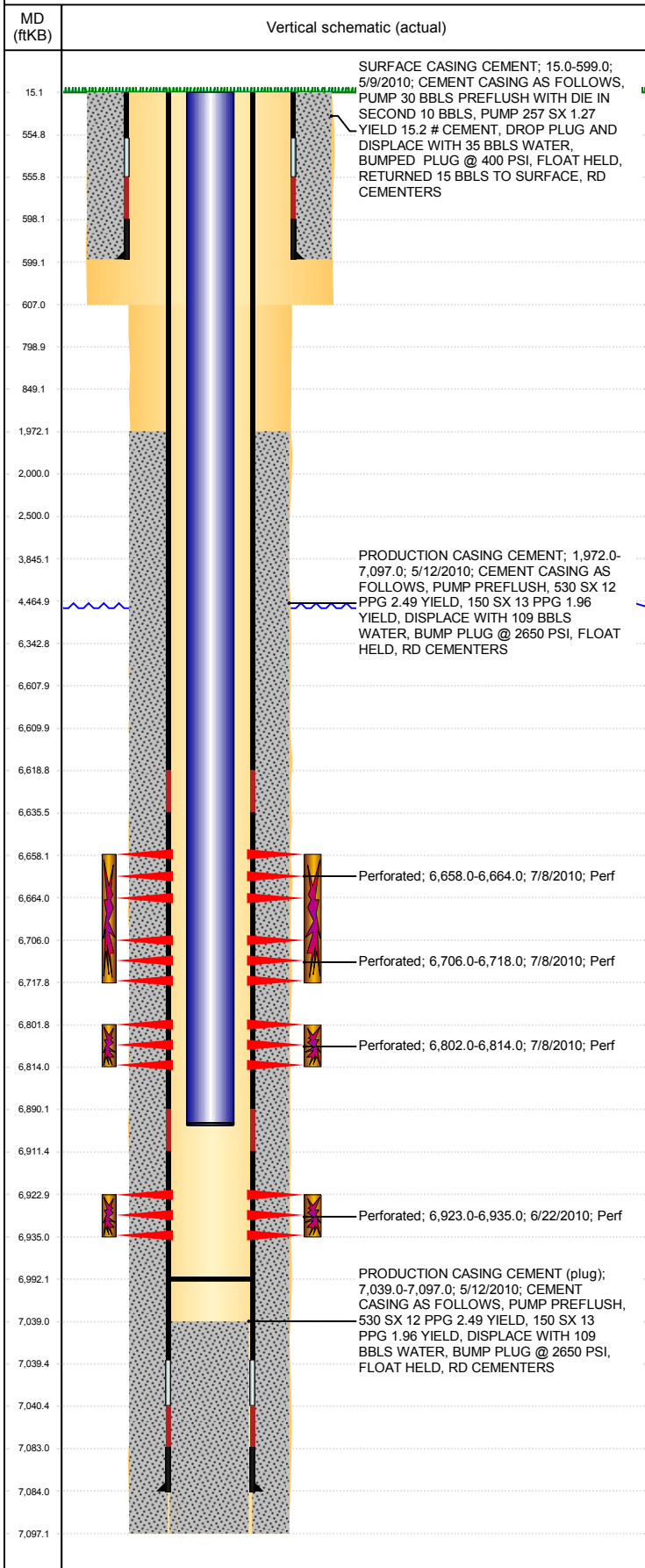


**Well Name: GUTTERSEN D15-30**

VERTICAL, ORIGINAL HOLE, 11/17/2018 12:15:13 PM



Well Header									
API 05-123-30704		Business Unit DJ BASIN		District 15		Well Config VERTICAL			
KB - GL / MSL (ft... 15.00		Spud Date 5/9/2010		P & A Date		Well Production Status SI		SoRT No	
Comment									
Surface Location (Congressional)									
Qtr 3 NW	Qtr 4 NW	Section 15	Twnshp 3	Twnsh... N	Range 64	Rng E/... W	Actual Latitude (°) 40.23174713	Actual Longitude (°) -104.54560566	
Wellbore Sections									
Section Des			Size (in)			Act Top, MD (ftKB)		Act Btm, MD (ftKB)	
SURFACE			12 1/4			15		607	
PRODUCTION			7 7/8			607		7,097	
Casing Strings									
Csg Des			Run Date		OD (in)	Wt/Len (lb/ft)	Grade	Top, MD (ftKB)	MD (ftKB)
Surface			5/9/2010		8 5/8	24.00	J-55	15.0	599.0
Production			5/11/2010		4 1/2	11.60	M-80	15.0	7,084.0
Cement									
Des					Start Date		Top (ftKB)		Btm (ftKB)
SURFACE CASING CEMENT					5/9/2010		15.0		599.0
PRODUCTION CASING CEMENT					5/12/2010		1,972.0		7,097.0
Zone Statuses									
Zone Name	Status Date	Status	Fluid Type	Job				Prod Method	
NIOBRARA	8/2/2010	PR	Water	DRILLING/COMPLETION - ORIGINAL, 5/9/2010...				Flowing	
NIOBRARA	6/13/2017	SI							
CODELL	7/10/2010	PR							
CODELL	8/2/2010	PR	Water					Flowing	
Perforation Data									
Linked Zone			Bnch/Stg	Entered Shot Total	Top (ftKB)		Btm (ftKB)		Date
NIOBRARA, ORIGINAL HOLE			A	12	6,658.00		6,664.00		7/8/2010
NIOBRARA, ORIGINAL HOLE			B	24	6,706.00		6,718.00		7/8/2010
NIOBRARA, ORIGINAL HOLE			C	24	6,802.00		6,814.00		7/8/2010
CODELL, ORIGINAL HOLE			01	48	6,923.00		6,935.00		6/22/2010
Stimulation Intervals									
Zone					Start Date		Top (ftKB)		Btm (ftKB)
NIOBRARA, ORIGINAL HOLE					7/8/2010		6,658.0		6,718.0
NIOBRARA, ORIGINAL HOLE					7/8/2010		6,802.0		6,814.0
CODELL, ORIGINAL HOLE					7/8/2010		6,923.0		6,935.0
Other In Hole									
Run Date		Des				OD (in)	Top (ftKB)		Btm (ftKB)
Logs									
Date		Type					Top, MD (ftKB)		Btm, MD (ftKB)
5/11/2010		Caliper/Comp. Density/Neutron/GR/SP/ML					2,740.0		7,086.0
5/11/2010		DIL/GR/SP/Caliper					597.0		7,086.0
5/24/2010		CBL/CCL/GR					1,800.0		7,024.0
8/14/2017		GYRO					0.0		6,800.0
Plug Back Total Depths									
Date		Type		Com					Depth (ftKB)
5/24/2010		FILL		DEPTH LOGGER					7,024.0
10/1/2010		PLUG REMNANTS		57' OF RAT HOLE					6,992.0