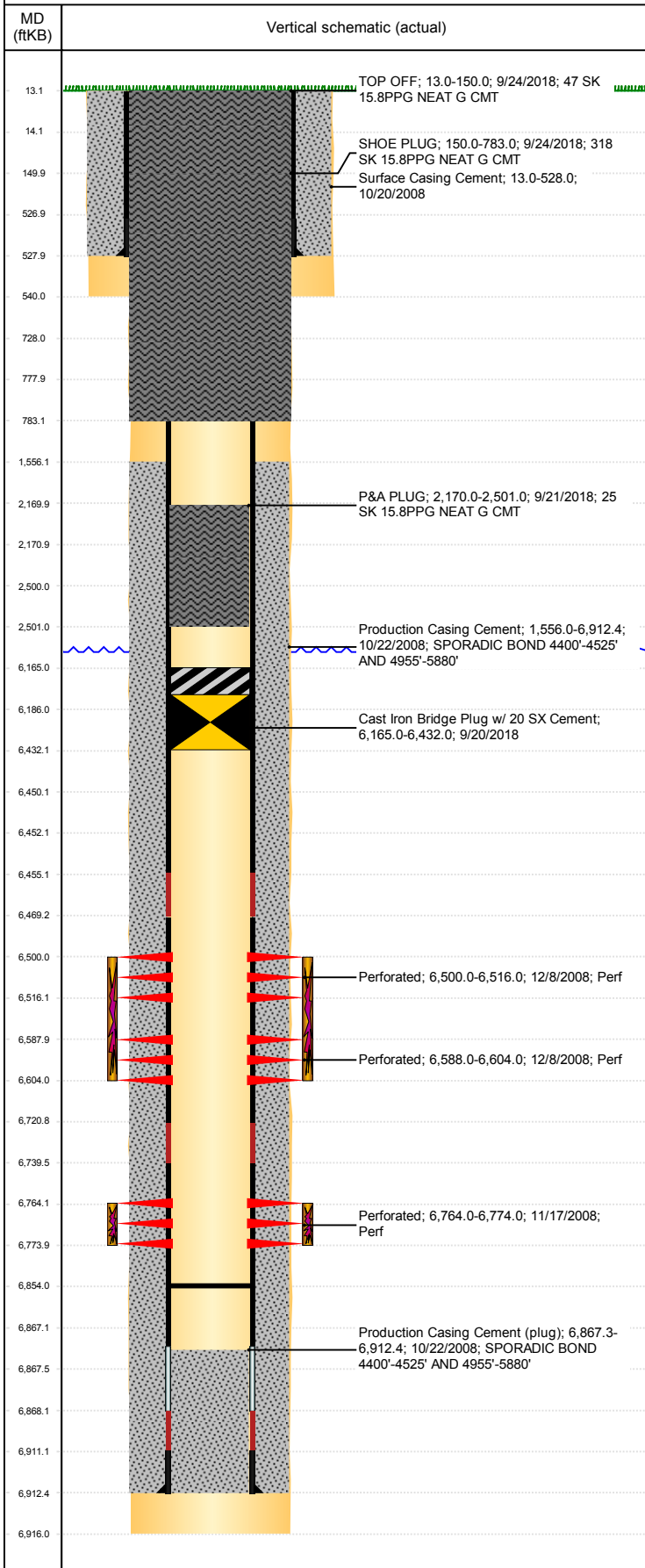


Well Name: 70 RANCH USX BB09-11

VERTICAL - ORIGINAL HOLE, 11/2/2018 12:11:12 PM



Well Header									
API 05-123-28074		Business Unit DJ BASIN			District 15		Well Config VERTICAL		
KB - GL / MSL (ft... 13.00		Spud Date 10/20/2008		P & A Date 9/24/2018		Well Production Status PA			SoRT Yes
Comment									
Surface Location (Congressional)									
Qtr 3 NE	Qtr 4 SW	Section 9	Twntshp 5	Twntsh... N	Range 63	Rng E/... W	Actual Latitude (°) 40.41205849	Actual Longitude (°) -104.44417842	
Wellbore Sections									
Section Des			Size (in)			Act Top, MD (ftKB)		Act Btm, MD (ftKB)	
SURFACE			12 1/4			13		540	
PRODUCTION			7 7/8			540		6,916	
Casing Strings									
Csg Des			Run Date		OD (in)	Wt/Len (lb/ft)	Grade	Top, MD (ftKB)	MD (ftKB)
Surface			10/20/2008		8 5/8	24.00	J-55	13.0	528.0
Production			10/22/2008		4 1/2	11.60	M-80	13.0	6,912.4
Cement									
Des					Start Date		Top (ftKB)		Btm (ftKB)
Surface Casing Cement					10/20/2008		13.0		528.0
Production Casing Cement					10/22/2008		1,556.0		6,912.4
P&A PLUG					9/21/2018		2,170.0		2,501.0
TOP OFF					9/24/2018		13.0		150.0
SHOE PLUG					9/24/2018		150.0		783.0
Zone Statuses									
Zone Name		Status Date	Status	Fluid Type	Job			Prod Method	
NIOBRARA		12/10/2008	PR		DRILLING/COMPLETION - ORIGINAL, 10/20/200...				
NIOBRARA		9/21/2018	P&A		ABANDON WELL, 9/19/2018 07:30				
CODELL		12/10/2008	PR		DRILLING/COMPLETION - ORIGINAL, 10/20/200...				
CODELL		9/21/2018	P&A		ABANDON WELL, 9/19/2018 07:30				
Perforation Data									
Linked Zone			Bnch/Stg	Entered Shot Total	Top (ftKB)		Btm (ftKB)		Date
NIOBRARA, ORIGINAL HOLE			A	32	6,500.00		6,516.00		12/8/2008
NIOBRARA, ORIGINAL HOLE			B	32	6,588.00		6,604.00		12/8/2008
CODELL, ORIGINAL HOLE				40	6,764.00		6,774.00		11/17/2008
Stimulation Intervals									
Zone				Start Date		Top (ftKB)		Btm (ftKB)	
NIOBRARA, ORIGINAL HOLE				12/8/2008		6,500.0		6,604.0	
CODELL, ORIGINAL HOLE				12/8/2008		6,764.0		6,774.0	
Other In Hole									
Run Date		Des				OD (in)	Top (ftKB)		Btm (ftKB)
9/20/2018		Cast Iron Bridge Plug w/ 20 SX Cement				3.99	6,165.0		6,432.0
Logs									
Date		Type				Top, MD (ftKB)		Btm, MD (ftKB)	
10/28/2008		CBL/CCL/GR				13.0		6,823.0	
10/28/2008		PULSED NEUTRON GAMMA RAY				450.0		6,830.0	
5/17/2011		GYRO				13.0		6,740.0	
Plug Back Total Depths									
Date		Type			Com				Depth (ftKB)
10/28/2008		FILL			DEPTH LOGGER ON CBL				6,828.0
4/2/2009		PLUG REMNANTS			DRILL CIFT P W/ CUTRITE BIT AND N2, CHASE DOWN W/ 22...				6,854.0