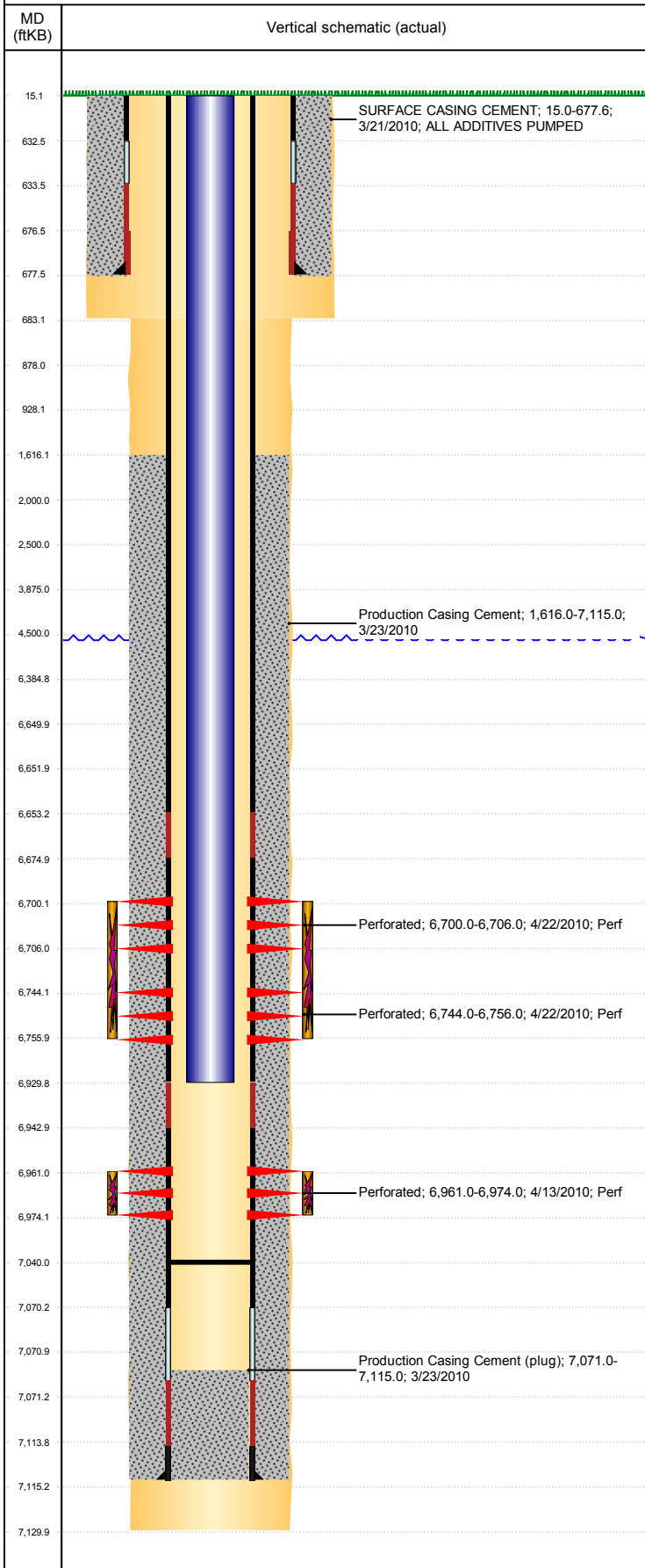


Well Name: GUTTERSEN D15-28

VERTICAL - ORIGINAL HOLE, 11/15/2018 4:14:43 PM



Well Header									
API 05-123-30498		Business Unit DJ BASIN		District 15		Well Config VERTICAL			
KB - GL / MSL (ft... 15.00		Spud Date 3/20/2010		P & A Date		Well Production Status SI		SoRT No	
Comment 318Ae LOCATION - DISCREPENCIES: SURF CGS SET DEPTH- ST 683' CMT RPT 677.6'; PROD CSG SET DEPTH- ST 7130, CMT & DRL RPTS 7115'									
Surface Location (Congressional)									
Qtr 3 NW	Qtr 4 NE	Section 15	Twnshp 3	Twnsh... N	Range 64	Rng E/... W	Actual Latitude (°) 40.23234600	Actual Longitude (°) -104.53712700	
Wellbore Sections									
Section Des			Size (in)			Act Top, MD (ftKB)		Act Btm, MD (ftKB)	
SURFACE			12 1/4			15		683	
PRODUCTION			7 7/8			683		7,130	
Casing Strings									
Csg Des			Run Date		OD (in)	Wt/Len (lb/ft)	Grade	Top, MD (ftKB)	MD (ftKB)
Surface			3/21/2010		8 5/8	24.00	J-55	15.0	677.6
Production			3/23/2010		4 1/2	11.60	M-80	15.0	7,115.0
Cement									
Des					Start Date		Top (ftKB)		Btm (ftKB)
SURFACE CASING CEMENT					3/21/2010		15.0		677.6
Production Casing Cement					3/23/2010		1,616.0		7,115.0
Zone Statuses									
Zone Name	Status Date	Status	Fluid Type	Job				Prod Method	
NIOBRARA	4/28/2010	PR	Water Water	DRILLING/COMPLETION - ORIGINAL, 3/18/2010...				Flowing Flowing	
NIOBRARA	5/3/2010	PR							
CODELL	5/3/2010	PR							
CODELL	2/9/2017	SI							
Perforation Data									
Linked Zone		Bnch/Stg	Entered Shot Total	Top (ftKB)		Btm (ftKB)		Date	
NIOBRARA, ORIGINAL HOLE		A	12	6,700.00		6,706.00		4/22/2010	
NIOBRARA, ORIGINAL HOLE		B	24	6,744.00		6,756.00		4/22/2010	
CODELL, ORIGINAL HOLE		01	52	6,961.00		6,974.00		4/13/2010	
Stimulation Intervals									
Zone			Start Date			Top (ftKB)		Btm (ftKB)	
NIOBRARA, ORIGINAL HOLE			4/22/2010			6,700.0		6,756.0	
CODELL, ORIGINAL HOLE			4/22/2010			6,961.0		6,974.0	
Other In Hole									
Run Date		Des				OD (in)	Top (ftKB)	Btm (ftKB)	
Logs									
Date		Type				Top, MD (ftKB)		Btm, MD (ftKB)	
3/23/2010		Caliper/Comp. Density/Neutron/GR/SP/ML				2,700.0		7,130.0	
3/23/2010		DIL/GR/SP/Caliper				677.0		7,130.0	
3/31/2010		CBL/CCL/GR				1,142.0		7,048.0	
2/12/2018		GYRO				12.0		6,850.0	
Plug Back Total Depths									
Date		Type		Com				Depth (ftKB)	
3/31/2010		FILL						7,049.0	
7/28/2010		PLUG REMNANTS						7,040.0	