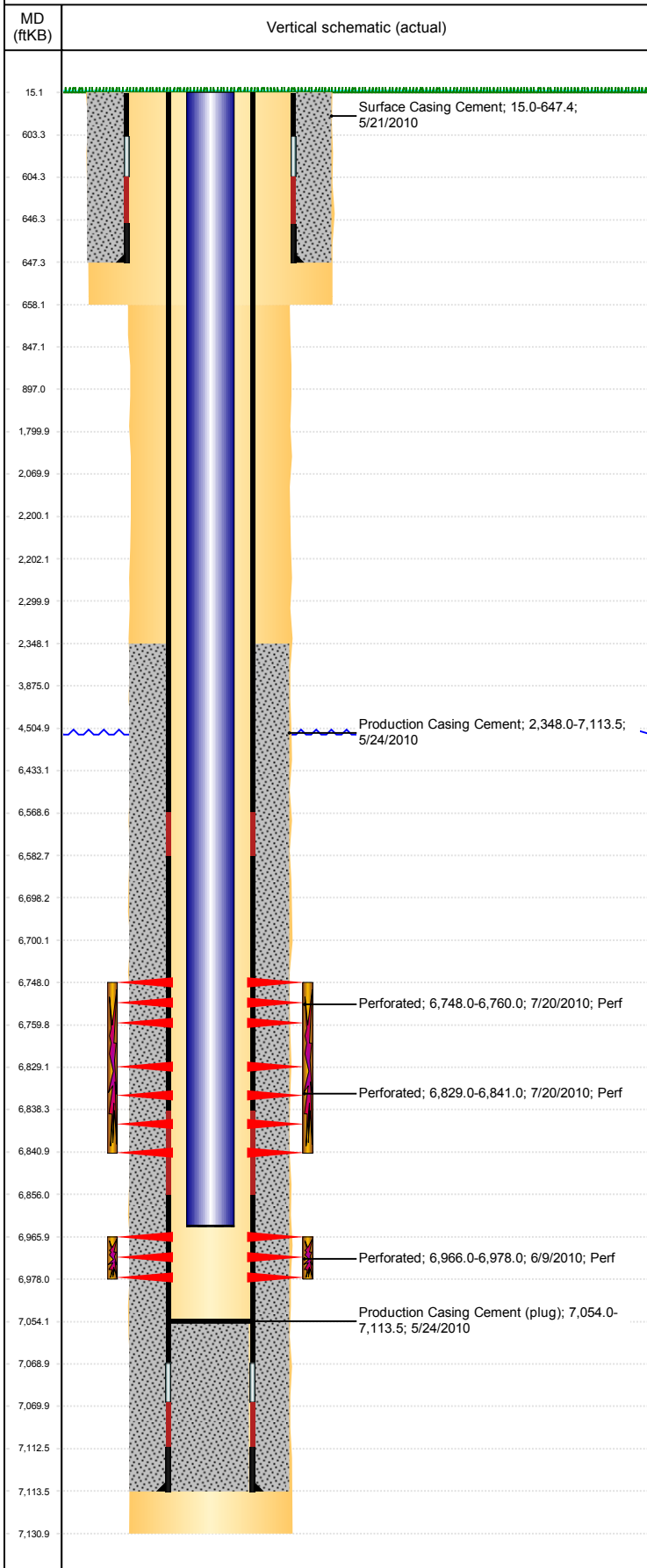


Well Name: GUTTERSEN D15-18

VERTICAL - ORIGINAL HOLE, 11/15/2018 3:51:25 PM



Well Header									
API 05-123-30732		Business Unit DJ BASIN			District 15		Well Config VERTICAL		
KB - GL / MSL (ft... 15.00		Spud Date 5/21/2010		P & A Date		Well Production Status SI			SoRT No
Comment 318A.e. LOCATION									
Surface Location (Congressional)									
Qtr 3 NW	Qtr 4 NE	Section 15	Twnshp 3	Twنش... N	Range 64	Rng E /... W	Actual Latitude (°) 40.22963000	Actual Longitude (°) -104.53656000	
Wellbore Sections									
Section Des			Size (in)			Act Top, MD (ftKB)		Act Btm, MD (ftKB)	
SURFACE			12 1/4			15		658	
PRODUCTION			7 7/8			658		7,131	
Casing Strings									
Csg Des			Run Date		OD (in)	Wt/Len (lb/ft)	Grade	Top, MD (ftKB)	MD (ftKB)
Surface			5/21/2010		8 5/8	24.00	J-55	15.0	647.4
Production			5/24/2010		4 1/2	11.60	M-80	15.0	7,113.5
Cement									
Des					Start Date		Top (ftKB)		Btm (ftKB)
Surface Casing Cement					5/21/2010		15.0		647.4
Production Casing Cement					5/24/2010		2,348.0		7,113.5
Zone Statuses									
Zone Name	Status Date	Status	Fluid Type	Job				Prod Method	
NIOBRARA	7/23/2010	PR		DRILLING/COMPLETION - ORIGINAL, 5/21/2010...					
NIOBRARA	11/29/2016	SI							
CODELL	7/23/2010	PR		DRILLING/COMPLETION - ORIGINAL, 5/21/2010...					
Perforation Data									
Linked Zone		Bnch/Stg	Entered Shot Total	Top (ftKB)		Btm (ftKB)		Date	
NIOBRARA, ORIGINAL HOLE		B	24	6,748.00		6,760.00		7/20/2010	
NIOBRARA, ORIGINAL HOLE		C	24	6,829.00		6,841.00		7/20/2010	
CODELL, ORIGINAL HOLE		1	48	6,966.00		6,978.00		6/9/2010	
Stimulation Intervals									
Zone				Start Date		Top (ftKB)		Btm (ftKB)	
NIOBRARA, ORIGINAL HOLE				7/20/2010		6,748.0		6,841.0	
CODELL, ORIGINAL HOLE				7/20/2010		6,966.0		6,978.0	
Other In Hole									
Run Date		Des				OD (in)	Top (ftKB)	Btm (ftKB)	
Logs									
Date		Type				Top, MD (ftKB)		Btm, MD (ftKB)	
5/24/2010		Caliper/Comp. Density/Neutron/GR/SP/ML				2,610.0		7,111.0	
5/24/2010		DIL/GR/SP/Caliper				647.0		7,131.0	
6/1/2010		CBL/CCL/GR				1,660.0		7,053.0	
2/12/2018		GYRO				12.0		6,850.0	
Plug Back Total Depths									
Date		Type		Com				Depth (ftKB)	
6/1/2010		FILL		FILL				7,054.0	
9/16/2010		PLUG REMNANTS		72' OF RAT HOLE				7,054.0	