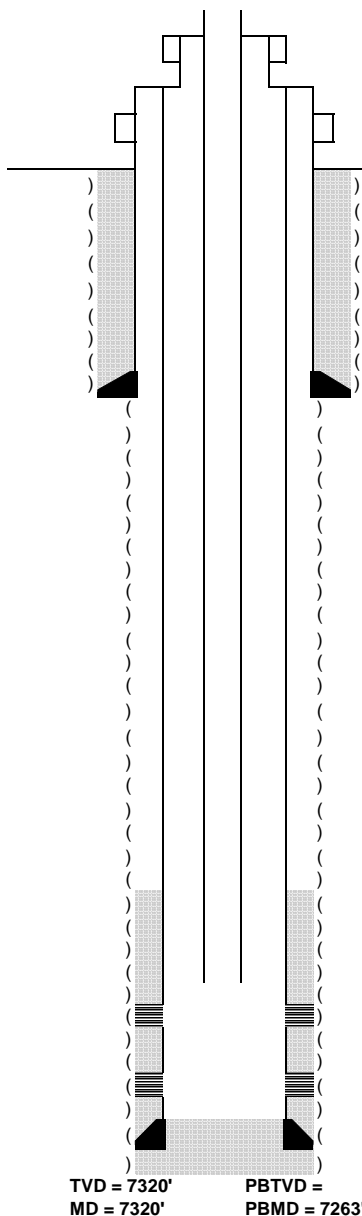




# WELLBORE DIAGRAM

CURRENT WBD

2310' FSL & 1980' FEL



KB ' 4826'

GL ' 4817'

Spud Date: 4/11/1983  
Date TD Reached 4/18/1983  
Completion Date: 6/22/1983

**Surface Casing**  
(12-1/4 Hole Size) 8-5/8" 24# csg set @ 412'  
w/ 335 sx cmt.

**Production casing**  
(7-7/8" Hole Size) 4-1/2" 11.6# csg set @ 7320'  
w/ 150 sx cmt

**Tubing**  
2-3/8" @ 7193'

TOC = 6812' CBL

## Formation Tops (MD)

Sussex	4381'
Shannon	4718'
Niobrara	6867'
Fort Hays	7174'
Codell	7196'

## Perfortations

Niobrara  
7006' - 7030'

Codell  
7198'-7208'

TVD = 7320' PBTVD =  
MD = 7320' PBMD = 7263'

Operator: Great Western Operating Co. LLC  
Well Name: Carlson #33-18  
Lease Number:  
Location: NWSE S18-T6N-R66W  
Field: Bracewell - #7487  
County, State: Weld, CO  
API Number: 05-123-11130  
Diagram Date:  
Lat/Long: