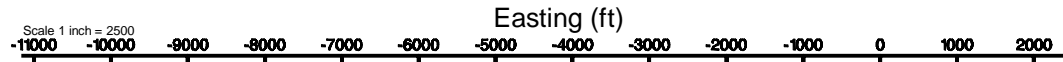


# KERR-MCGEE OIL & GAS ONSHORE LP (WA)

Location: COLORADO Slot: SLOT#30 ZELDA 25-7HZ(373'FNL & 1249'FWL,SEC.25)  
 Field: WELD COUNTY (UTM/TRUE NORTH)Well: ZELDA 25-7HZ  
 Facility: SEC.25-T2N-R65W Wellbore: ZELDA 25-7HZ PWB



Plot reference wellpath is ZELDA 25-7HZ PWP Rev-A.1	Grid System: NAD83 / UTM,Zone 13 North, US feet
True vertical depths are referenced to Xtreme 22 (17) (RT)	* = Wellpath was transformed from a different geodetic datum
Measured depths are referenced to Xtreme 22 (17) (RT)	North Reference: True north
Xtreme 22 (17) (RT) to Mean Sea Level: 4920 feet	Scale: True distance
Mean Sea Level to Mud line (At Slot: SLOT#30 ZELDA 25-7HZ(373'FNL & 1249'FWL,SEC.25)): 0 feet	Depths are in feet
Coordinates are in feet referenced to Slot	Created by: painsrtr on 2018-08-14
	Database: WA_DEN_Anadarko_Defn



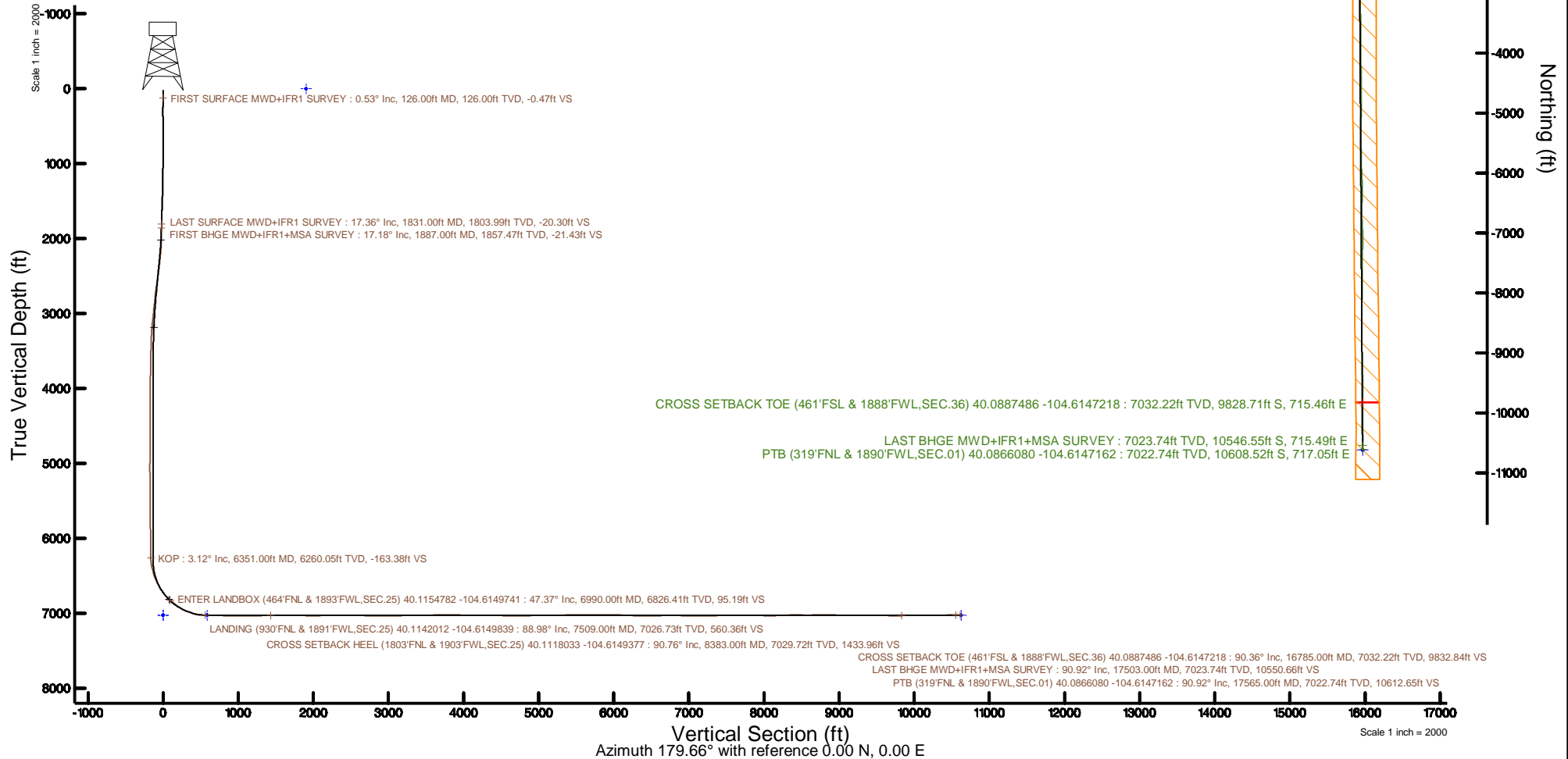
## SLOT#30 ZELDA 25-7HZ(373'FNL & 1249'FWL,SEC.25)

KOP : 6260.05ft TVD, 167.32ft N, 653.01ft E  
 FIRST BHGE MWD+IFR1+MSA SURVEY : 1857.47ft TVD, 22.85ft N, 236.65ft E  
 LAST SURFACE MWD+IFR1 SURVEY : 1803.99ft TVD, 21.63ft N, 220.07ft E  
 FIRST SURFACE MWD+IFR1 SURVEY : 126.00ft TVD, 0.47ft N, 0.18ft W  
 ENTER LANDBOX (464'FNL & 1893'FWL,SEC.25) 40.1154782 -104.6149741 : 6826.41ft TVD, 91.31ft S, 644.63ft E  
 LANDING (930'FNL & 1891'FWL,SEC.25) 40.1142012 -104.6149839 : 7026.73ft TVD, 556.51ft S, 641.91ft E

CROSS SETBACK HEEL (1803'FNL & 1903'FWL,SEC.25) 40.1118033 -104.6149377 : 7029.72ft TVD, 1430.04ft S, 654.86ft E

CROSS SETBACK TOE (461'FSL & 1888'FWL,SEC.36) 40.0887486 -104.6147218 : 7032.22ft TVD, 9828.71ft S, 715.46ft E

LAST BHGE MWD+IFR1+MSA SURVEY : 7023.74ft TVD, 10546.55ft S, 715.49ft E  
 PTB (319'FNL & 1890'FWL,SEC.01) 40.0866080 -104.6147162 : 7022.74ft TVD, 10608.52ft S, 717.05ft E



FIRST SURFACE MWD+IFR1 SURVEY : 0.53° Inc, 126.00ft MD, 126.00ft TVD, -0.47ft VS

LAST SURFACE MWD+IFR1 SURVEY : 17.36° Inc, 1831.00ft MD, 1803.99ft TVD, -20.30ft VS  
 FIRST BHGE MWD+IFR1+MSA SURVEY : 17.18° Inc, 1887.00ft MD, 1857.47ft TVD, -21.43ft VS

KOP : 3.12° Inc, 6351.00ft MD, 6260.05ft TVD, -163.38ft VS

ENTER LANDBOX (464'FNL & 1893'FWL,SEC.25) 40.1154782 -104.6149741 : 47.37° Inc, 6990.00ft MD, 6826.41ft TVD, 95.19ft VS

LANDING (930'FNL & 1891'FWL,SEC.25) 40.1142012 -104.6149839 : 88.98° Inc, 7509.00ft MD, 7026.73ft TVD, 560.36ft VS  
 CROSS SETBACK HEEL (1803'FNL & 1903'FWL,SEC.25) 40.1118033 -104.6149377 : 90.76° Inc, 8383.00ft MD, 7029.72ft TVD, 1430.96ft VS

CROSS SETBACK TOE (461'FSL & 1888'FWL,SEC.36) 40.0887486 -104.6147218 : 90.36° Inc, 16785.00ft MD, 7032.22ft TVD, 9832.84ft VS  
 LAST BHGE MWD+IFR1+MSA SURVEY : 90.92° Inc, 17503.00ft MD, 7023.74ft TVD, 10550.66ft VS  
 PTB (319'FNL & 1890'FWL,SEC.01) 40.0866080 -104.6147162 : 90.92° Inc, 17565.00ft MD, 7022.74ft TVD, 10612.65ft VS

REFERENCE WELLPATH IDENTIFICATION			
Operator	KERR-MCGEE OIL & GAS ONSHORE LP (WA)	Slot	SLOT#30 ZELDA 25-7HZ(373'FNL & 1249'FWL,SEC.25)
Area	COLORADO	Well	ZELDA 25-7HZ
Field	WELD COUNTY (UTM/TRUE NORTH)	Wellbore	ZELDA 25-7HZ AWB
Facility	SEC.25-T2N-R65W		

REPORT SETUP INFORMATION			
Projection System	NAD83 / UTM Zone 13 North, US feet	Software System	WellArchitect® 5.0
North Reference	True	User	Painetr
Scale	0.999613	Report Generated	8/14/2018 at 10:08 AM
Convergence at slot	0.25° East	Database/Source file	WA_DEN_Anadarko_Defn/ZELDA_25-7HZ_AWP.xml

WELLPATH LOCATION						
	Local coordinates		Grid coordinates		Geographic coordinates	
	North[ft]	East[ft]	Easting[US ft]	Northing[US ft]	Latitude	Longitude
Slot Location	83.64	-3590.91	1747417.05	14569105.73	40°06'56.624"N	104°37'02.204"W
Facility Reference Pt			1751006.90	14569038.09	40°06'55.800"N	104°36'15.984"W
Field Reference Pt			1698235.31	14552047.82	40°04'09.600"N	104°47'36.000"W

WELLPATH DATUM			
Calculation method	Minimum curvature	Xtreme 22 (17') (RT) to Facility Vertical Datum	4920.00ft
Horizontal Reference Pt	Slot	Xtreme 22 (17') (RT) to Mean Sea Level	4920.00ft
Vertical Reference Pt	Xtreme 22 (17') (RT)	Xtreme 22 (17') (RT) to Mud Line at Slot (SLOT#30 ZELDA 25-7HZ(373'FNL & 1249'FWL,SEC.25))	4920.00ft
MD Reference Pt	Xtreme 22 (17') (RT)	Section Origin	N 0.00, E 0.00 ft
Field Vertical Reference	Mean Sea Level	Section Azimuth	179.66°

REFERENCE WELLPATH IDENTIFICATION			
Operator	KERR-MCGEE OIL & GAS ONSHORE LP (WA)	Slot	SLOT#30 ZELDA 25-7HZ(373'FNL & 1249'FWL,SEC.25)
Area	COLORADO	Well	ZELDA 25-7HZ
Field	WELD COUNTY (UTM/TRUE NORTH)	Wellbore	ZELDA 25-7HZ AWB
Facility	SEC.25-T2N-R65W		

WELLPATH DATA (235 stations) † = interpolated/extrapolated station													
MD [ft]	Inclination [°]	Azimuth [°]	TVD [ft]	Vert Sect [ft]	North [ft]	East [ft]	Grid East [US ft]	Grid North [US ft]	Latitude	Longitude	DLS [°/100ft]	Comments	
0.00	†	0.000	339.460	0.00	0.00	0.00	1747417.05	14569105.73	40°06'56.624"N	104°37'02.204"W	0.00		
17.00		0.000	339.460	17.00	0.00	0.00	1747417.05	14569105.73	40°06'56.624"N	104°37'02.204"W	0.00		
126.00		0.530	339.460	126.00	-0.47	0.47	1747416.87	14569106.20	40°06'56.629"N	104°37'02.206"W	0.49	FIRST SURFACE MWD+IFR1 SURVEY	
158.00		0.530	350.790	158.00	-0.76	0.76	1747416.80	14569106.48	40°06'56.631"N	104°37'02.207"W	0.33		
190.00		0.660	327.410	190.00	-1.06	1.06	1747416.67	14569106.78	40°06'56.634"N	104°37'02.209"W	0.85		
222.00		0.700	338.050	221.99	-1.40	1.39	1747416.50	14569107.12	40°06'56.638"N	104°37'02.211"W	0.41		
253.00		0.880	335.760	252.99	-1.79	1.79	1747416.33	14569107.51	40°06'56.642"N	104°37'02.213"W	0.59		
285.00		0.400	332.840	284.99	-2.12	2.11	1747416.18	14569107.83	40°06'56.645"N	104°37'02.215"W	1.50		
316.00		0.260	189.160	315.99	-2.14	2.14	1747416.11	14569107.86	40°06'56.645"N	104°37'02.216"W	2.03		
348.00		0.690	169.830	347.99	-1.88	1.88	1747416.14	14569107.60	40°06'56.643"N	104°37'02.216"W	1.42		
380.00		0.700	170.530	379.98	-1.50	1.49	1747416.21	14569107.22	40°06'56.639"N	104°37'02.215"W	0.04		
412.00		0.700	171.410	411.98	-1.11	1.11	1747416.27	14569106.83	40°06'56.635"N	104°37'02.214"W	0.03		
443.00		0.620	155.240	442.98	-0.77	0.77	1747416.37	14569106.49	40°06'56.632"N	104°37'02.213"W	0.65		
475.00		0.530	147.060	474.98	-0.49	0.49	1747416.52	14569106.21	40°06'56.629"N	104°37'02.211"W	0.38		
506.00		0.440	174.220	505.98	-0.25	0.25	1747416.61	14569105.97	40°06'56.626"N	104°37'02.210"W	0.79		
538.00		0.570	147.420	537.98	0.01	-0.01	1747416.71	14569105.72	40°06'56.624"N	104°37'02.208"W	0.83		
570.00		0.570	164.470	569.97	0.29	-0.30	1747416.84	14569105.43	40°06'56.621"N	104°37'02.207"W	0.53		
601.00		0.570	170.530	600.97	0.60	-0.60	1747416.91	14569105.13	40°06'56.618"N	104°37'02.206"W	0.19		
633.00		0.530	119.200	632.97	0.83	-0.83	0.01	1747417.07	14569104.90	40°06'56.616"N	104°37'02.204"W	1.49	
665.00		1.140	73.320	664.97	0.81	-0.81	0.45	1747417.50	14569104.92	40°06'56.616"N	104°37'02.198"W	2.69	
697.00		1.490	59.700	696.96	0.51	-0.51	1.11	1747418.16	14569105.23	40°06'56.619"N	104°37'02.190"W	1.46	
728.00		1.760	72.620	727.95	0.17	-0.16	1.91	1747418.96	14569105.58	40°06'56.622"N	104°37'02.179"W	1.46	
760.00		2.680	80.530	759.92	-0.09	0.11	3.12	1747420.17	14569105.85	40°06'56.625"N	104°37'02.164"W	3.02	
792.00		2.940	88.790	791.88	-0.22	0.25	4.68	1747421.73	14569106.00	40°06'56.626"N	104°37'02.144"W	1.50	
824.00		3.380	89.930	823.84	-0.23	0.27	6.44	1747423.49	14569106.02	40°06'56.627"N	104°37'02.121"W	1.39	
855.00		4.260	86.680	854.77	-0.29	0.34	8.50	1747425.55	14569106.10	40°06'56.627"N	104°37'02.095"W	2.92	
887.00		4.570	86.590	886.67	-0.42	0.48	10.96	1747428.01	14569106.26	40°06'56.629"N	104°37'02.063"W	0.97	
919.00		4.970	84.750	918.56	-0.60	0.68	13.62	1747430.66	14569106.47	40°06'56.631"N	104°37'02.029"W	1.34	
981.00		6.680	85.190	980.24	-1.11	1.23	19.88	1747436.92	14569107.05	40°06'56.636"N	104°37'01.948"W	2.76	
1013.00		6.810	87.300	1012.02	-1.34	1.48	23.63	1747440.67	14569107.31	40°06'56.639"N	104°37'01.900"W	0.87	
1045.00		7.820	86.860	1043.76	-1.52	1.69	27.70	1747444.74	14569107.53	40°06'56.641"N	104°37'01.847"W	3.16	
1077.00		7.820	86.680	1075.46	-1.74	1.93	32.05	1747449.08	14569107.80	40°06'56.643"N	104°37'01.791"W	0.08	
1140.00		8.830	83.340	1137.79	-2.49	2.74	41.13	1747458.16	14569108.64	40°06'56.651"N	104°37'01.675"W	1.78	
1172.00		9.710	81.940	1169.38	-3.13	3.40	46.24	1747463.26	14569109.33	40°06'56.658"N	104°37'01.609"W	2.84	
1204.00		10.500	81.410	1200.88	-3.91	4.22	51.80	1747468.81	14569110.17	40°06'56.666"N	104°37'01.537"W	2.49	
1235.00		11.210	82.810	1231.33	-4.67	5.02	57.58	1747474.59	14569110.99	40°06'56.674"N	104°37'01.463"W	2.44	
1267.00		11.950	85.100	1262.67	-5.30	5.69	63.97	1747480.97	14569111.69	40°06'56.680"N	104°37'01.381"W	2.72	
1298.00		12.130	87.030	1292.99	-5.71	6.13	70.42	1747487.42	14569112.16	40°06'56.685"N	104°37'01.298"W	1.42	
1330.00		12.480	87.210	1324.26	-6.01	6.47	77.23	1747494.22	14569112.53	40°06'56.688"N	104°37'01.210"W	1.10	
1362.00		13.580	86.240	1355.43	-6.38	6.89	84.43	1747501.42	14569112.98	40°06'56.692"N	104°37'01.117"W	3.50	
1393.00		14.550	85.800	1385.50	-6.86	7.41	91.95	1747508.93	14569113.53	40°06'56.697"N	104°37'01.021"W	3.15	
1425.00		15.380	84.050	1416.42	-7.54	8.15	100.18	1747517.15	14569114.30	40°06'56.705"N	104°37'00.915"W	2.95	
1456.00		15.820	83.080	1446.28	-8.43	9.08	108.46	1747525.43	14569115.27	40°06'56.714"N	104°37'00.808"W	1.65	
1520.00		16.040	80.880	1507.82	-10.78	11.54	125.85	1747542.80	14569117.80	40°06'56.738"N	104°37'00.584"W	1.00	
1551.00		16.440	81.230	1537.58	-12.07	12.88	134.42	1747551.36	14569119.18	40°06'56.751"N	104°37'00.474"W	1.33	

REFERENCE WELLPATH IDENTIFICATION				
Operator	KERR-MCGEE OIL & GAS ONSHORE LP (WA)		Slot	SLOT#30 ZELDA 25-7HZ(373'FNL & 1249'FWL,SEC.25)
Area	COLORADO		Well	ZELDA 25-7HZ
Field	WELD COUNTY (UTM/TRUE NORTH)		Wellbore	ZELDA 25-7HZ AWB
Facility	SEC.25-T2N-R65W			

WELLPATH DATA (235 stations)												
MD [ft]	Inclination [°]	Azimuth [°]	TVD [ft]	Vert Sect [ft]	North [ft]	East [ft]	Grid East [US ft]	Grid North [US ft]	Latitude	Longitude	DLS [°/100ft]	Comments
1583.00	17.010	83.170	1568.23	-13.27	14.13	143.54	1747560.47	14569120.47	40°06'56.764"N	104°37'00.356"W	2.49	
1615.00	17.230	83.690	1598.81	-14.29	15.21	152.90	1747569.82	14569121.59	40°06'56.774"N	104°37'00.236"W	0.84	
1646.00	18.020	84.310	1628.35	-15.21	16.19	162.23	1747579.15	14569122.61	40°06'56.784"N	104°37'00.116"W	2.62	
1678.00	18.410	84.310	1658.75	-16.14	17.18	172.18	1747589.09	14569123.64	40°06'56.794"N	104°36'59.988"W	1.22	
1710.00	18.760	84.220	1689.08	-17.10	18.20	182.33	1747599.23	14569124.70	40°06'56.804"N	104°36'59.857"W	1.10	
1773.00	18.540	84.480	1748.77	-18.96	20.18	202.38	1747619.27	14569126.77	40°06'56.823"N	104°36'59.599"W	0.37	
1805.00	17.620	85.720	1779.19	-19.75	21.03	212.27	1747629.15	14569127.67	40°06'56.832"N	104°36'59.472"W	3.12	
1831.00	17.360	85.540	1803.99	-20.30	21.63	220.07	1747636.94	14569128.29	40°06'56.838"N	104°36'59.371"W	1.02	LAST SURFACE MWD+IFR1 SURVEY
1887.00	17.180	86.010	1857.47	-21.43	22.85	236.65	1747653.50	14569129.59	40°06'56.850"N	104°36'59.158"W	0.41	FIRST BHGE MWD+IFR1+MSA SURVEY
1974.00	17.610	89.340	1940.49	-22.32	23.90	262.62	1747679.47	14569130.75	40°06'56.860"N	104°36'58.824"W	1.25	
2061.00	19.430	87.830	2022.98	-22.85	24.60	290.25	1747707.08	14569131.57	40°06'56.867"N	104°36'58.468"W	2.16	
2149.00	19.530	81.190	2105.95	-25.48	27.41	319.41	1747736.22	14569134.50	40°06'56.895"N	104°36'58.093"W	2.52	
2236.00	19.470	73.030	2187.98	-31.77	33.87	347.65	1747764.42	14569141.08	40°06'56.959"N	104°36'57.729"W	3.13	
2323.00	18.570	71.100	2270.23	-40.33	42.59	374.63	1747791.35	14569149.91	40°06'57.045"N	104°36'57.382"W	1.26	
2411.00	17.410	68.930	2353.93	-49.45	51.86	400.17	1747816.84	14569159.29	40°06'57.136"N	104°36'57.053"W	1.52	
2498.00	17.810	63.760	2436.85	-59.86	62.42	424.25	1747840.87	14569169.95	40°06'57.241"N	104°36'56.743"W	1.86	
2586.00	16.560	61.570	2520.93	-71.65	74.34	447.35	1747863.91	14569181.96	40°06'57.359"N	104°36'56.446"W	1.60	
2673.00	16.250	59.840	2604.38	-83.54	86.36	468.78	1747885.28	14569194.07	40°06'57.477"N	104°36'56.170"W	0.67	
2761.00	16.230	63.470	2688.87	-95.08	98.04	490.43	1747906.87	14569205.84	40°06'57.593"N	104°36'55.891"W	1.15	
2848.00	16.010	67.280	2772.46	-105.02	108.10	512.38	1747928.76	14569215.99	40°06'57.692"N	104°36'55.609"W	1.24	
2936.00	15.070	66.940	2857.24	-114.05	117.27	534.10	1747950.43	14569225.25	40°06'57.783"N	104°36'55.329"W	1.07	
3024.00	14.410	65.850	2942.34	-122.89	126.23	554.61	1747970.90	14569234.30	40°06'57.871"N	104°36'55.065"W	0.81	
3111.00	13.390	64.750	3026.79	-131.50	134.96	573.60	1747989.85	14569243.10	40°06'57.958"N	104°36'54.821"W	1.21	
3199.00	12.570	63.750	3112.54	-139.98	143.54	591.41	1748007.61	14569251.76	40°06'58.042"N	104°36'54.592"W	0.97	
3286.00	10.140	61.460	3197.84	-147.73	151.39	606.63	1748022.79	14569259.67	40°06'58.120"N	104°36'54.396"W	2.84	
3374.00	8.140	64.590	3284.71	-154.03	157.76	619.06	1748035.19	14569266.09	40°06'58.183"N	104°36'54.236"W	2.34	
3461.00	6.110	68.380	3371.04	-158.32	162.11	628.93	1748045.04	14569270.48	40°06'58.226"N	104°36'54.109"W	2.39	
3548.00	4.390	77.340	3457.67	-160.71	164.55	636.48	1748052.58	14569272.95	40°06'58.250"N	104°36'54.012"W	2.18	
3573.00	4.260	78.010	3482.60	-161.11	164.95	638.33	1748054.41	14569273.36	40°06'58.254"N	104°36'53.988"W	0.56	
3660.00	2.190	66.510	3569.46	-162.41	166.29	643.01	1748059.09	14569274.71	40°06'58.267"N	104°36'53.927"W	2.48	
3748.00	2.190	45.750	3657.40	-164.24	168.13	645.76	1748061.83	14569276.57	40°06'58.285"N	104°36'53.892"W	0.90	
3835.00	1.220	357.620	3744.36	-166.32	170.21	646.91	1748062.97	14569278.66	40°06'58.306"N	104°36'53.877"W	1.89	
3923.00	1.200	357.150	3832.34	-168.17	172.07	646.83	1748062.88	14569280.51	40°06'58.324"N	104°36'53.878"W	0.03	
4010.00	0.440	237.860	3919.33	-168.91	172.80	646.50	1748062.55	14569281.24	40°06'58.332"N	104°36'53.883"W	1.69	
4098.00	0.570	283.810	4007.33	-168.84	172.73	645.79	1748061.84	14569281.17	40°06'58.331"N	104°36'53.892"W	0.47	
4185.00	0.490	306.920	4094.33	-169.17	173.05	645.07	1748061.12	14569281.49	40°06'58.334"N	104°36'53.901"W	0.26	
4273.00	0.270	326.860	4182.33	-169.57	173.45	644.66	1748060.70	14569281.89	40°06'58.338"N	104°36'53.906"W	0.29	
4361.00	0.430	265.600	4270.32	-169.72	173.60	644.21	1748060.26	14569282.03	40°06'58.339"N	104°36'53.912"W	0.43	
4448.00	0.440	261.150	4357.32	-169.65	173.53	643.56	1748059.61	14569281.95	40°06'58.339"N	104°36'53.920"W	0.04	
4536.00	0.550	253.780	4445.32	-169.48	173.36	642.82	1748058.87	14569281.78	40°06'58.337"N	104°36'53.930"W	0.14	
4623.00	0.260	306.400	4532.32	-169.49	173.36	642.26	1748058.31	14569281.78	40°06'58.337"N	104°36'53.937"W	0.51	
4711.00	0.490	309.430	4620.31	-169.85	173.71	641.81	1748057.86	14569282.13	40°06'58.341"N	104°36'53.943"W	0.26	
4798.00	0.690	318.630	4707.31	-170.48	174.34	641.17	1748057.22	14569282.76	40°06'58.347"N	104°36'53.951"W	0.25	
4886.00	1.190	347.100	4795.30	-171.77	175.63	640.62	1748056.66	14569284.05	40°06'58.360"N	104°36'53.958"W	0.76	
4974.00	0.690	47.480	4883.29	-173.02	176.88	640.81	1748056.84	14569285.30	40°06'58.372"N	104°36'53.956"W	1.18	

REFERENCE WELLPATH IDENTIFICATION			
Operator	KERR-MCGEE OIL & GAS ONSHORE LP (WA)	Slot	SLOT#30 ZELDA 25-7HZ(373'FNL & 1249'FWL,SEC.25)
Area	COLORADO	Well	ZELDA 25-7HZ
Field	WELD COUNTY (UTM/TRUE NORTH)	Wellbore	ZELDA 25-7HZ AWB
Facility	SEC.25-T2N-R65W		

WELLPATH DATA (235 stations) † = interpolated/extrapolated station												
MD (ft)	Inclination (°)	Azimuth (°)	TVD (ft)	Vert Sect (ft)	North (ft)	East (ft)	Grid East (US ft)	Grid North (US ft)	Latitude	Longitude	DLS (°/100ft)	Comments
5061.00	1.360	27.130	4970.27	-174.29	178.15	641.66	1748057.69	14569286.57	40°06'58.384"N	104°36'53.945"W	0.86	
5148.00	1.080	97.240	5057.26	-175.09	178.97	642.95	1748058.97	14569287.39	40°06'58.393"N	104°36'53.928"W	1.63	
5236.00	1.430	119.020	5145.24	-174.45	178.33	644.73	1748060.76	14569286.76	40°06'58.386"N	104°36'53.905"W	0.67	
5323.00	1.440	117.140	5232.21	-173.41	177.31	646.65	1748062.68	14569285.75	40°06'58.376"N	104°36'53.881"W	0.06	
5411.00	1.050	111.390	5320.19	-172.60	176.51	648.39	1748064.42	14569284.96	40°06'58.368"N	104°36'53.858"W	0.46	
5498.00	1.070	122.420	5407.17	-171.87	175.78	649.81	1748065.85	14569284.24	40°06'58.361"N	104°36'53.840"W	0.24	
5585.00	0.910	119.440	5494.16	-171.08	175.01	651.10	1748067.14	14569283.47	40°06'58.353"N	104°36'53.823"W	0.19	
5672.00	0.890	116.630	5581.15	-170.43	174.36	652.31	1748068.35	14569282.83	40°06'58.347"N	104°36'53.808"W	0.06	
5760.00	0.860	127.840	5669.14	-169.72	173.65	653.44	1748069.48	14569282.12	40°06'58.340"N	104°36'53.793"W	0.20	
5847.00	0.810	119.350	5756.13	-169.01	172.95	654.49	1748070.54	14569281.43	40°06'58.333"N	104°36'53.780"W	0.15	
5935.00	0.840	117.570	5844.12	-168.40	172.35	655.61	1748071.65	14569280.83	40°06'58.327"N	104°36'53.765"W	0.04	
6023.00	0.620	233.080	5932.12	-167.81	171.76	655.80	1748071.85	14569280.24	40°06'58.321"N	104°36'53.763"W	1.41	
6110.00	0.630	240.390	6019.11	-167.30	171.24	655.00	1748071.06	14569279.72	40°06'58.316"N	104°36'53.773"W	0.09	
6197.00	0.740	218.470	6106.11	-166.63	170.57	654.24	1748070.30	14569279.04	40°06'58.309"N	104°36'53.783"W	0.32	
6285.00	1.030	223.110	6194.10	-165.61	169.55	653.34	1748069.41	14569278.02	40°06'58.299"N	104°36'53.794"W	0.34	
6351.00†	3.120	177.665	6260.05	-163.38	167.32	653.01	1748069.08	14569275.79	40°06'58.277"N	104°36'53.799"W	3.80	KOP
6372.00	3.890	174.220	6281.01	-162.10	166.04	653.11	1748069.19	14569274.51	40°06'58.265"N	104°36'53.798"W	3.80	
6460.00	10.090	181.300	6368.32	-151.41	155.35	653.23	1748069.36	14569263.83	40°06'58.159"N	104°36'53.796"W	7.10	
6547.00	15.600	187.390	6453.11	-132.19	136.12	651.55	1748067.76	14569244.59	40°06'57.969"N	104°36'53.818"W	6.51	
6635.00	21.680	182.240	6536.46	-104.20	108.11	649.39	1748065.72	14569216.59	40°06'57.692"N	104°36'53.845"W	7.15	
6722.00	27.870	179.660	6615.42	-67.77	71.68	648.89	1748065.37	14569180.17	40°06'57.332"N	104°36'53.852"W	7.22	
6810.00	34.260	179.970	6690.76	-22.39	26.30	649.02	1748065.70	14569134.81	40°06'56.884"N	104°36'53.850"W	7.26	
6897.00	40.860	182.100	6759.69	30.59	-26.69	647.99	1748064.90	14569081.84	40°06'56.360"N	104°36'53.863"W	7.73	
6985.00	47.040	183.690	6823.02	91.53	-87.65	644.86	1748062.03	14569020.89	40°06'55.758"N	104°36'53.904"W	7.13	
6990.00†	47.366	183.583	6826.41	95.19	-91.31	644.63	1748061.82	14569017.22	40°06'55.722"N	104°36'53.907"W	6.70	ENTER LANDBOX (464'FNL & 1893'FWL,SEC.25) 40.1154782 -104.6149741
7072.00	52.720	181.970	6879.06	157.93	-154.07	641.62	1748059.08	14568954.48	40°06'55.101"N	104°36'53.946"W	6.70	
7160.00	57.400	178.600	6929.45	230.03	-226.17	641.32	1748059.09	14568882.41	40°06'54.389"N	104°36'53.949"W	6.17	
7247.00	64.880	179.680	6971.42	306.16	-302.30	642.44	1748060.54	14568806.31	40°06'53.637"N	104°36'53.935"W	8.67	
7335.00	74.700	180.770	7001.78	388.64	-384.78	642.09	1748060.54	14568723.86	40°06'52.821"N	104°36'53.940"W	11.22	
7422.00	81.630	180.640	7019.61	473.72	-469.87	641.04	1748059.86	14568638.80	40°06'51.981"N	104°36'53.953"W	7.97	
7509.00	88.980	178.230	7026.73	560.36	-556.51	641.91	1748061.10	14568552.20	40°06'51.124"N	104°36'53.942"W	8.89	LANDING (930'FNL & 1891'FWL,SEC.25) 40.1142012 -104.6149839
7597.00	88.490	177.880	7028.67	648.31	-644.44	644.89	1748064.46	14568464.32	40°06'50.256"N	104°36'53.904"W	0.68	
7684.00	88.680	177.660	7030.82	735.23	-731.34	648.28	1748068.22	14568377.46	40°06'49.397"N	104°36'53.860"W	0.33	
7772.00	89.200	179.010	7032.45	823.19	-819.29	650.83	1748071.15	14568289.56	40°06'48.528"N	104°36'53.827"W	1.64	
7859.00	88.580	177.620	7034.14	910.15	-906.23	653.39	1748074.08	14568202.67	40°06'47.668"N	104°36'53.794"W	1.75	
7947.00	89.690	177.920	7035.46	998.09	-994.16	656.82	1748077.88	14568114.79	40°06'46.800"N	104°36'53.750"W	1.31	
8034.00	90.310	179.320	7035.46	1085.08	-1081.13	658.91	1748080.35	14568027.87	40°06'45.940"N	104°36'53.723"W	1.76	
8122.00	90.860	181.270	7034.57	1173.06	-1169.12	658.46	1748080.28	14567939.91	40°06'45.071"N	104°36'53.729"W	2.30	
8209.00	90.960	180.690	7033.18	1260.03	-1256.09	656.97	1748079.16	14567852.96	40°06'44.211"N	104°36'53.748"W	0.68	
8297.00	91.420	180.400	7031.36	1348.00	-1344.07	656.13	1748078.71	14567765.02	40°06'43.342"N	104°36'53.759"W	0.62	
8383.00†	90.755	181.299	7029.72	1433.96	-1430.04	654.86	1748077.80	14567679.07	40°06'42.492"N	104°36'53.776"W	1.30	CROSS SETBACK HEEL (1803'FNL & 1903'FWL,SEC.25) 40.1118033 -104.6149377
8385.00	90.740	181.320	7029.70	1435.96	-1432.04	654.81	1748077.76	14567677.07	40°06'42.472"N	104°36'53.776"W	1.30	
8472.00	90.490	180.520	7028.76	1522.93	-1519.03	653.42	1748076.74	14567590.12	40°06'41.613"N	104°36'53.794"W	0.96	
8560.00	91.020	179.730	7027.60	1610.92	-1607.02	653.22	1748076.93	14567502.16	40°06'40.743"N	104°36'53.797"W	1.08	
8648.00	88.550	179.410	7027.93	1698.91	-1695.01	653.88	1748077.97	14567414.21	40°06'39.874"N	104°36'53.788"W	2.83	

REFERENCE WELLPATH IDENTIFICATION			
Operator	KERR-MCGEE OIL & GAS ONSHORE LP (WA)	Slot	SLOT#30 ZELDA 25-7HZ(373'FNL & 1249'FWL,SEC.25)
Area	COLORADO	Well	ZELDA 25-7HZ
Field	WELD COUNTY (UTM/TRUE NORTH)	Wellbore	ZELDA 25-7HZ AWB
Facility	SEC.25-T2N-R65W		

WELLPATH DATA (235 stations)												
MD [ft]	Inclination [°]	Azimuth [°]	TVD [ft]	Vert Sect [ft]	North [ft]	East [ft]	Grid East [US ft]	Grid North [US ft]	Latitude	Longitude	DLS ["/100ft]	Comments
8735.00	88.740	179.360	7029.99	1785.89	-1781.98	654.82	1748079.28	14567327.28	40°06'39.014"N	104°36'53.776"W	0.23	
8823.00	89.040	179.010	7031.70	1873.87	-1869.95	656.07	1748080.90	14567239.34	40°06'38.145"N	104°36'53.760"W	0.52	
8910.00	89.380	178.700	7032.90	1960.85	-1956.93	657.81	1748083.02	14567152.41	40°06'37.285"N	104°36'53.738"W	0.53	
8998.00	90.590	178.250	7032.92	2048.83	-2044.89	660.15	1748085.74	14567064.49	40°06'36.416"N	104°36'53.708"W	1.47	
9085.00	91.600	177.850	7031.26	2135.78	-2131.83	663.11	1748089.07	14566977.60	40°06'35.557"N	104°36'53.670"W	1.25	
9173.00	89.720	178.410	7030.24	2223.74	-2219.77	665.98	1748092.32	14566889.71	40°06'34.688"N	104°36'53.633"W	2.23	
9260.00	90.830	178.270	7029.82	2310.71	-2306.73	668.50	1748095.21	14566802.79	40°06'33.829"N	104°36'53.600"W	1.29	
9348.00	89.970	179.660	7029.21	2398.70	-2394.71	670.09	1748097.18	14566714.85	40°06'32.959"N	104°36'53.580"W	1.86	
9435.00	91.020	180.490	7028.46	2485.69	-2481.70	669.98	1748097.44	14566627.89	40°06'32.099"N	104°36'53.581"W	1.54	
9523.00	88.250	179.640	7029.02	2573.68	-2569.69	669.88	1748097.72	14566539.94	40°06'31.230"N	104°36'53.583"W	3.29	
9611.00	88.210	179.710	7031.74	2661.64	-2657.65	670.37	1748098.59	14566452.02	40°06'30.361"N	104°36'53.576"W	0.09	
9699.00	88.250	179.120	7034.46	2749.60	-2745.60	671.27	1748099.87	14566364.11	40°06'29.492"N	104°36'53.565"W	0.67	
9786.00	89.780	180.600	7035.95	2836.58	-2832.59	671.49	1748100.46	14566277.16	40°06'28.632"N	104°36'53.562"W	2.45	
9874.00	90.030	179.920	7036.10	2924.57	-2920.58	671.09	1748100.44	14566189.19	40°06'27.762"N	104°36'53.567"W	0.82	
9961.00	90.890	179.890	7035.40	3011.57	-3007.58	671.23	1748100.95	14566102.23	40°06'26.903"N	104°36'53.565"W	0.99	
10049.00	91.110	179.370	7033.86	3099.55	-3095.56	671.80	1748101.90	14566014.29	40°06'26.033"N	104°36'53.558"W	0.64	
10137.00	91.110	178.620	7032.16	3187.53	-3183.53	673.34	1748103.82	14565926.36	40°06'25.164"N	104°36'53.538"W	0.85	
10224.00	91.510	178.120	7030.17	3274.49	-3270.48	675.82	1748106.67	14565839.46	40°06'24.305"N	104°36'53.506"W	0.74	
10312.00	90.090	179.090	7028.94	3362.46	-3358.44	677.96	1748109.19	14565751.54	40°06'23.435"N	104°36'53.479"W	1.95	
10399.00	90.340	180.130	7028.61	3449.46	-3445.43	678.55	1748110.15	14565664.59	40°06'22.576"N	104°36'53.471"W	1.23	
10487.00	91.450	179.930	7027.24	3537.44	-3533.42	678.50	1748110.49	14565576.63	40°06'21.706"N	104°36'53.472"W	1.28	
10575.00	91.850	179.120	7024.71	3625.40	-3621.38	679.23	1748111.59	14565488.71	40°06'20.837"N	104°36'53.463"W	1.03	
10662.00	91.510	180.460	7022.15	3712.37	-3708.34	679.55	1748112.29	14565401.79	40°06'19.978"N	104°36'53.459"W	1.59	
10750.00	89.480	179.150	7021.39	3800.36	-3796.33	679.85	1748112.97	14565313.83	40°06'19.108"N	104°36'53.455"W	2.75	
10837.00	88.400	178.910	7023.00	3887.33	-3883.30	681.32	1748114.81	14565226.90	40°06'18.249"N	104°36'53.436"W	1.27	
10925.00	87.940	178.540	7025.81	3975.28	-3971.23	683.28	1748117.15	14565139.01	40°06'17.380"N	104°36'53.411"W	0.67	
11012.00	88.680	179.860	7028.38	4062.23	-4058.19	684.49	1748118.73	14565052.10	40°06'16.520"N	104°36'53.395"W	1.74	
11100.00	89.910	179.250	7029.46	4150.22	-4146.17	685.18	1748119.80	14564964.15	40°06'15.651"N	104°36'53.386"W	1.56	
11187.00	90.400	178.790	7029.23	4237.22	-4233.16	686.67	1748121.66	14564877.21	40°06'14.791"N	104°36'53.367"W	0.77	
11278.00	89.750	178.540	7029.11	4328.20	-4324.14	688.79	1748124.17	14564786.28	40°06'13.892"N	104°36'53.340"W	0.77	
11369.00	89.200	178.290	7029.94	4419.18	-4415.10	691.30	1748127.08	14564695.36	40°06'12.993"N	104°36'53.308"W	0.66	
11460.00	88.520	180.260	7031.75	4510.15	-4506.07	692.45	1748128.62	14564604.43	40°06'12.094"N	104°36'53.293"W	2.29	
11551.00	88.920	179.440	7033.79	4601.13	-4597.04	692.69	1748129.25	14564513.50	40°06'11.195"N	104°36'53.290"W	1.00	
11642.00	90.340	181.080	7034.37	4692.12	-4688.03	692.28	1748129.23	14564422.54	40°06'10.296"N	104°36'53.295"W	2.38	
11729.00	90.590	181.300	7033.67	4779.08	-4775.01	690.47	1748127.79	14564335.59	40°06'09.437"N	104°36'53.318"W	0.38	
11817.00	90.710	180.930	7032.67	4867.05	-4862.99	688.76	1748126.46	14564247.64	40°06'08.567"N	104°36'53.340"W	0.44	
11904.00	91.970	180.650	7030.63	4954.01	-4949.96	687.56	1748125.64	14564160.70	40°06'07.708"N	104°36'53.356"W	1.48	
11991.00	91.020	180.650	7028.36	5040.96	-5036.92	686.57	1748125.02	14564073.77	40°06'06.848"N	104°36'53.369"W	1.09	
12079.00	89.970	181.460	7027.60	5128.93	-5124.90	684.95	1748123.78	14563985.82	40°06'05.979"N	104°36'53.389"W	1.51	
12166.00	90.830	180.420	7027.00	5215.90	-5211.88	683.53	1748122.73	14563898.86	40°06'05.119"N	104°36'53.408"W	1.55	
12342.00	90.340	180.130	7025.20	5391.88	-5387.87	682.68	1748122.64	14563722.94	40°06'03.380"N	104°36'53.419"W	0.32	
12429.00	90.520	178.930	7024.55	5478.88	-5474.86	683.40	1748123.73	14563635.98	40°06'02.521"N	104°36'53.410"W	1.39	
12517.00	91.510	178.540	7022.99	5566.85	-5562.83	685.34	1748126.05	14563548.06	40°06'01.651"N	104°36'53.385"W	1.21	
12604.00	90.250	179.200	7021.65	5653.83	-5649.80	687.05	1748128.14	14563461.13	40°06'00.792"N	104°36'53.363"W	1.63	
12779.00	91.110	178.650	7019.58	5828.80	-5824.75	690.34	1748132.17	14563286.26	40°05'59.063"N	104°36'53.320"W	0.58	

REFERENCE WELLPATH IDENTIFICATION			
Operator	KERR-MCGEE OIL & GAS ONSHORE LP (WA)	Slot	SLOT#30 ZELDA 25-7HZ(373'FNL & 1249'FWL,SEC.25)
Area	COLORADO	Well	ZELDA 25-7HZ
Field	WELD COUNTY (UTM/TRUE NORTH)	Wellbore	ZELDA 25-7HZ AWB
Facility	SEC.25-T2N-R65W		

WELLPATH DATA (235 stations) † = interpolated/extrapolated station												
MD [ft]	Inclination [°]	Azimuth [°]	TVD [ft]	Vert Sect [ft]	North [ft]	East [ft]	Grid East [US ft]	Grid North [US ft]	Latitude	Longitude	DLS ["/100ft]	Comments
12867.00	88.280	177.540	7020.04	5916.76	5912.69	693.26	1748135.48	14563198.37	40°05'58.194"N	104°36'53.283"W	3.45	
12954.00	88.280	177.540	7022.65	6003.66	5999.57	697.06	1748139.65	14563111.54	40°05'57.335"N	104°36'53.234"W	0.10	
13041.00	88.550	177.090	7025.06	6090.55	6086.44	701.20	1748144.16	14563024.73	40°05'56.477"N	104°36'53.181"W	0.52	
13129.00	86.920	178.770	7028.54	6178.44	6174.31	704.38	1748147.72	14562936.91	40°05'55.609"N	104°36'53.140"W	2.66	
13217.00	87.190	180.130	7033.06	6266.32	6262.18	705.22	1748148.94	14562849.07	40°05'54.740"N	104°36'53.129"W	1.57	
13304.00	89.080	179.950	7035.89	6353.26	6349.13	705.16	1748149.25	14562762.16	40°05'53.881"N	104°36'53.130"W	2.18	
13392.00	90.370	181.650	7036.31	6441.24	6437.12	703.94	1748148.40	14562674.20	40°05'53.011"N	104°36'53.146"W	2.42	
13479.00	90.990	180.620	7035.28	6528.20	6524.09	702.21	1748147.05	14562587.25	40°05'52.152"N	104°36'53.168"W	1.38	
13566.00	91.970	180.740	7033.03	6615.16	6611.06	701.18	1748146.40	14562500.32	40°05'51.293"N	104°36'53.181"W	1.13	
13654.00	91.750	179.430	7030.18	6703.11	6699.01	701.05	1748146.64	14562412.40	40°05'50.423"N	104°36'53.183"W	1.51	
13741.00	88.770	177.830	7029.78	6790.08	6785.97	703.13	1748149.10	14562325.48	40°05'49.564"N	104°36'53.156"W	3.89	
13829.00	88.550	177.150	7031.84	6877.99	6873.86	706.98	1748153.33	14562237.64	40°05'48.695"N	104°36'53.107"W	0.81	
13917.00	89.350	177.450	7033.45	6965.90	6961.75	711.13	1748157.85	14562149.81	40°05'47.827"N	104°36'53.053"W	0.97	
14004.00	88.980	179.860	7034.72	7052.88	7048.71	713.17	1748160.26	14562062.89	40°05'46.968"N	104°36'53.027"W	2.80	
14179.00	90.710	181.000	7035.20	7227.85	7223.69	711.86	1748159.70	14561887.97	40°05'45.238"N	104°36'53.044"W	1.18	
14267.00	91.480	180.780	7033.51	7315.81	7311.67	710.49	1748158.72	14561800.03	40°05'44.369"N	104°36'53.062"W	0.91	
14354.00	90.830	181.210	7031.76	7402.77	7398.64	708.98	1748157.58	14561713.09	40°05'43.510"N	104°36'53.081"W	0.90	
14442.00	91.630	180.810	7029.87	7490.72	7486.60	707.43	1748156.41	14561625.15	40°05'42.640"N	104°36'53.101"W	1.02	
14529.00	90.280	180.650	7028.42	7577.69	7573.58	706.32	1748155.67	14561538.20	40°05'41.781"N	104°36'53.115"W	1.56	
14617.00	91.140	179.960	7027.33	7665.68	7661.57	705.85	1748155.58	14561450.25	40°05'40.911"N	104°36'53.121"W	1.25	
14705.00	89.320	179.650	7026.98	7753.68	7749.56	706.15	1748156.26	14561362.29	40°05'40.042"N	104°36'53.118"W	2.10	
14792.00	89.780	178.590	7027.66	7840.67	7836.55	707.49	1748157.97	14561275.34	40°05'39.182"N	104°36'53.100"W	1.33	
14879.00	87.350	179.860	7029.84	7927.63	7923.51	708.66	1748159.52	14561188.42	40°05'38.323"N	104°36'53.085"W	3.15	
14967.00	88.710	181.840	7032.86	8015.55	8011.44	707.36	1748158.60	14561100.52	40°05'37.454"N	104°36'53.102"W	2.73	
15054.00	90.650	182.790	7033.35	8102.45	8098.36	703.84	1748155.46	14561013.62	40°05'36.595"N	104°36'53.147"W	2.48	
15142.00	92.060	183.030	7031.27	8190.28	8186.22	699.38	1748151.37	14560925.78	40°05'35.727"N	104°36'53.205"W	1.63	
15229.00	92.590	180.190	7027.74	8277.15	8273.11	696.93	1748149.30	14560838.91	40°05'34.868"N	104°36'53.236"W	3.32	
15317.00	91.080	180.290	7024.92	8365.10	8361.06	696.57	1748149.31	14560751.00	40°05'33.999"N	104°36'53.241"W	1.72	
15404.00	89.110	180.140	7024.78	8452.09	8448.05	696.24	1748149.36	14560664.03	40°05'33.139"N	104°36'53.245"W	2.27	
15492.00	89.630	179.770	7025.75	8540.08	8536.05	696.31	1748149.81	14560576.08	40°05'32.269"N	104°36'53.244"W	0.73	
15579.00	90.550	179.830	7025.61	8627.08	8623.04	696.61	1748150.49	14560489.11	40°05'31.410"N	104°36'53.241"W	1.06	
15667.00	91.420	180.010	7024.10	8715.07	8711.03	696.74	1748150.99	14560401.16	40°05'30.540"N	104°36'53.239"W	1.01	
15754.00	90.400	178.290	7022.71	8802.05	8798.01	698.03	1748152.65	14560314.23	40°05'29.681"N	104°36'53.222"W	2.30	
15841.00	88.270	178.740	7023.72	8889.02	8884.97	700.28	1748155.28	14560227.31	40°05'28.821"N	104°36'53.194"W	2.50	
15929.00	88.580	178.320	7026.14	8976.97	8972.90	702.54	1748157.91	14560139.42	40°05'27.952"N	104°36'53.164"W	0.59	
16016.00	88.980	179.280	7028.00	9063.94	9059.86	704.36	1748160.11	14560052.50	40°05'27.093"N	104°36'53.141"W	1.20	
16104.00	89.630	179.080	7029.06	9151.93	9147.85	705.62	1748161.75	14559964.56	40°05'26.224"N	104°36'53.125"W	0.77	
16191.00	89.720	178.970	7029.56	9238.92	9234.83	707.10	1748163.60	14559877.61	40°05'25.364"N	104°36'53.106"W	0.16	
16279.00	90.030	177.550	7029.75	9326.89	9322.79	709.77	1748166.65	14559789.70	40°05'24.495"N	104°36'53.072"W	1.65	
16366.00	89.600	179.680	7030.03	9413.87	9409.76	711.87	1748169.13	14559702.78	40°05'23.635"N	104°36'53.045"W	2.50	
16453.00	89.480	178.250	7030.73	9500.86	9496.74	713.44	1748171.07	14559615.84	40°05'22.776"N	104°36'53.024"W	1.65	
16541.00	89.380	179.920	7031.60	9588.85	9584.72	714.85	1748172.85	14559527.90	40°05'21.906"N	104°36'53.006"W	1.90	
16629.00	89.690	180.100	7032.32	9676.85	9672.72	714.83	1748173.22	14559439.94	40°05'21.037"N	104°36'53.007"W	0.41	
16716.00	90.090	179.850	7032.48	9763.84	9759.72	714.87	1748173.63	14559352.97	40°05'20.177"N	104°36'53.006"W	0.54	
16785.00†	90.357	179.176	7032.22	9832.84	9828.71	715.46	1748174.51	14559284.01	40°05'19.495"N	104°36'52.999"W	1.05	CROSS SETBACK TOE (461'FSL & 1888'FWL,SEC.36) 40.0887486 -104.6147218

REFERENCE WELLPATH IDENTIFICATION				
Operator	KERR-MCGEE OIL & GAS ONSHORE LP (WA)		Slot	SLOT#30 ZELDA 25-7HZ(373'FNL & 1249'FWL,SEC.25)
Area	COLORADO		Well	ZELDA 25-7HZ
Field	WELD COUNTY (UTM/TRUE NORTH)		Wellbore	ZELDA 25-7HZ AWB
Facility	SEC.25-T2N-R65W			

WELLPATH DATA (235 stations)												
MD [ft]	Inclination [°]	Azimuth [°]	TVD [ft]	Vert Sect [ft]	North [ft]	East [ft]	Grid East [US ft]	Grid North [US ft]	Latitude	Longitude	DLS [°/100ft]	Comments
16804.00	90.430	178.990	7032.08	9851.84	-9847.71	715.76	1748174.90	14559265.02	40°05'19.307"N	104°36'52.995"W	1.05	
16891.00	91.230	178.720	7030.82	9938.82	-9934.68	717.50	1748177.01	14559178.09	40°05'18.448"N	104°36'52.972"W	0.97	
16978.00	89.850	181.360	7030.00	10025.81	-10021.67	717.44	1748177.32	14559091.13	40°05'17.588"N	104°36'52.973"W	3.42	
17066.00	90.090	181.450	7030.05	10113.77	-10109.64	715.28	1748175.55	14559003.19	40°05'16.719"N	104°36'53.001"W	0.29	
17153.00	90.490	180.570	7029.61	10200.74	-10196.63	713.75	1748174.39	14558916.23	40°05'15.859"N	104°36'53.021"W	1.11	
17241.00	91.050	180.420	7028.43	10288.72	-10284.62	712.99	1748174.01	14558828.27	40°05'14.990"N	104°36'53.030"W	0.66	
17328.00	91.140	179.890	7026.76	10375.70	-10371.60	712.75	1748174.14	14558741.32	40°05'14.130"N	104°36'53.034"W	0.62	
17416.00	90.950	178.980	7025.16	10463.69	-10459.58	713.62	1748175.39	14558653.38	40°05'13.261"N	104°36'53.022"W	1.06	
17503.00	90.920	178.560	7023.74	10550.66	-10546.55	715.49	1748177.63	14558566.46	40°05'12.401"N	104°36'52.998"W	0.48	LAST BHGE MWD+IFR1+MSA SURVEY
17565.00	90.920	178.560	7022.74	10612.65	-10608.52	717.05	1748179.45	14558504.52	40°05'11.789"N	104°36'52.978"W	0.00	PTB (319'FNL & 1890'FWL,SEC.01) 40.0866080 -104.6147162

HOLE & CASING SECTIONS - Ref Wellbore: ZELDA 25-7HZ AWB Ref Wellpath: ZELDA 25-7HZ AWP									
String/Diameter	Start MD [ft]	End MD [ft]	Interval [ft]	Start TVD [ft]	End TVD [ft]	Start N/S [ft]	Start E/W [ft]	End N/S [ft]	End E/W [ft]
9.625in Casing Surface	17.00	1871.00	1854.00	17.00	1842.18	0.00	0.00	22.52	231.92

TARGETS								
Name	TVD [ft]	North [ft]	East [ft]	Grid East [US ft]	Grid North [US ft]	Latitude	Longitude	Shape
SEC.36-T2N-R65W	2.00	-1892.43	2003.82	1749428.22	14567222.67	40°06'37.922"N	104°36'36.414"W	polygon
SEC.25-T2N-R65W	22.00	8025.43	677.56	1748059.81	14577130.87	40°08'15.932"N	104°36'53.480"W	polygon
ZELDA 25-7HZ BHL REV-1(330'FNL & 1886'FWL,SEC.01)	7028.00	-10619.85	712.65	1748175.10	14558493.17	40°05'11.677"N	104°36'53.035"W	point
ZELDA 25-7HZ HEEL REV-1(950'FNL & 1897'FWL,SEC.25)	7028.00	-580.64	652.22	1748071.51	14568528.13	40°06'50.886"N	104°36'53.809"W	point
ZELDA 25-7HZ LANDBOX	7028.00	0.00	0.00	1747417.05	14569105.73	40°06'56.624"N	104°37'02.204"W	polygon
ZELDA 25-7HZ SETBACK 1	7028.00	0.00	0.00	1747417.05	14569105.73	40°06'56.624"N	104°37'02.204"W	polygon
ZELDA 25-7HZ SETBACK 2	7028.00	0.00	0.00	1747417.05	14569105.73	40°06'56.624"N	104°37'02.204"W	polygon

WELLPATH COMPOSITION - Ref Wellbore: ZELDA 25-7HZ AWB Ref Wellpath: ZELDA 25-7HZ AWP				
Start MD [ft]	End MD [ft]	Positional Uncertainty Model	Log Name/Comment	Wellbore
17.00	1831.00	Custom APC ISCWSA REV 2 MWD+IFR1 (approximation)	Custom APC ISCWSA Rev-2 MWD+IFR1 <126 - 1831>	ZELDA 25-7HZ AWB
1831.00	17503.00	Custom APC ISCWSA REV 2 MWD+IFR1+MSA (approximation)	BHGE Custom APC ISCWSA Rev-2 MWD+IFR1+MSA <1887 - 17503>	ZELDA 25-7HZ AWB
17503.00	17565.00	Blind Drilling (std)	Projection to bit	ZELDA 25-7HZ AWB

REFERENCE WELLPATH IDENTIFICATION			
Operator	KERR-MCGEE OIL & GAS ONSHORE LP (WA)	Slot	SLOT#30 ZELDA 25-7HZ(373'FNL & 1249'FWL,SEC.25)
Area	COLORADO	Well	ZELDA 25-7HZ
Field	WELD COUNTY (UTM/TRUE NORTH)	Wellbore	ZELDA 25-7HZ AWB
Facility	SEC.25-T2N-R65W		

WELLPATH COMMENTS				
MD [ft]	Inclination [°]	Azimuth [°]	TVD [ft]	Comment
126.00	0.530	339.460	126.00	FIRST SURFACE MWD+IFR1 SURVEY
1831.00	17.360	85.540	1803.99	LAST SURFACE MWD+IFR1 SURVEY
1887.00	17.180	86.010	1857.47	FIRST BHGE MWD+IFR1+MSA SURVEY
6351.00	3.120	177.665	6260.05	KOP
6990.00	47.366	183.583	6826.41	ENTER LANDBOX (464'FNL & 1893'FWL,SEC.25) 40.1154782 -104.6149741
7509.00	88.980	178.230	7026.73	LANDING (930'FNL & 1891'FWL,SEC.25) 40.1142012 -104.6149839
8383.00	90.755	181.299	7029.72	CROSS SETBACK HEEL (1803'FNL & 1903'FWL,SEC.25) 40.1118033 -104.6149377
16785.00	90.357	179.176	7032.22	CROSS SETBACK TOE (461'FNL & 1888'FWL,SEC.36) 40.0887486 -104.6147218
17503.00	90.920	178.560	7023.74	LAST BHGE MWD+IFR1+MSA SURVEY
17565.00	90.920	178.560	7022.74	PTB (319'FNL & 1890'FWL,SEC.01) 40.0866080 -104.6147162