

*The Road to Excellence Starts with Safety*

Sold To #: 300466	Ship To #: 3860321	Quote #: 0022478512	Sales Order #: 0905065693
Customer: ANADARKO PETROLEUM CORP-EBUS		Customer Rep: TRAVIS LOURANCE	
Well Name: ZELDA		Well #: 25-6HZ	API/UWI #: 05-123-46391-00
Field: WATTENBERG	City (SAP): HUDSON	County/Parish: WELD	State: COLORADO
Legal Description: NW NW-25-2N-65W-373FNL-1234FWL			
Contractor: XTREME DRLG		Rig/Platform Name/Num: XTREME 22	
Job BOM: 7523 7523			
Well Type: HORIZONTAL GAS			
Sales Person: HALAMERICA\HX41066		Srvc Supervisor: Vitali Neverdasov	

**Job**

Formation Name			
Formation Depth (MD)	Top		Bottom
Form Type	BHST		
Job depth MD	16985ft		Job Depth TVD
Water Depth			Wk Ht Above Floor
Perforation Depth (MD)	From		To

**Well Data**

Description	New / Used	Size in	ID in	Weight lbm/ft	Thread	Grade	Top MD ft	Bottom MD ft	Top TVD ft	Bottom TVD ft
Casing		9.625	8.921	36		J-55	0	1836	0	1836
Casing	0	5.5	4.892	17	LTC	HCP110	0	16985	0	6962
Open Hole Section			7.875				1836	16995	1836	6962

**Tools and Accessories**

Type	Size in	Qty	Make	Depth ft	Type	Size in	Qty	Make
Guide Shoe	5.5				Top Plug	5.5	1	WHED
Float Shoe	5.5	1	N/A	16985	Bottom Plug	5.5	1	WHED
Float Collar	5.5	1	N/A	16983	SSR plug set	5.5	0	
Insert Float	5.5				Plug Container	5.5	1	HES
Stage Tool	5.5				Centralizers	5.5	360	N/A

**Fluid Data**

Stage/Plug #: 1										
Fluid #	Stage Type	Fluid Name	Qty	Qty UoM	Mixing Density lbm/gal	Yield ft3/sack	Mix Fluid Gal	Rate bbl/min	Total Mix Fluid Gal	
1	Tuned Spacer III	Tuned Spacer III	80	bbl	10.5	6.96		4		
0.70 gal/bbl		<b>DUAL SPACER SURFACTANT B, 5 GAL PAIL (100003665)</b>								
0.25 gal/bbl		<b>D-AIR 3000L, 5 GAL PAIL (101007444)</b>								
79.92 lbm/bbl		<b>BARITE, BULK (100003681)</b>								

0.70 gal/bbl		<b>MUSOL(R) A, 5 GAL PAIL (100064220)</b>							
37.58 gal/bbl		<b>FRESH WATER</b>							
Fluid #	Stage Type	Fluid Name	Qty	Qty UoM	Mixing Density lbm/gal	Yield ft3/sack	Mix Fluid Gal	Rate bbl/min	Total Mix Fluid Gal
2	Gasstop B1	GASSTOP (TM) SYSTEM	625	sack	13.2	1.59		8	7.82
0.10 Gal		<b>D-AIR 3000L, TOTETANK (101396181)</b>							
0.65 %		<b>SCR-100 (100003749)</b>							
5.22 Gal		<b>FRESH WATER</b>							
Fluid #	Stage Type	Fluid Name	Qty	Qty UoM	Mixing Density lbm/gal	Yield ft3/sack	Mix Fluid Gal	Rate bbl/min	Total Mix Fluid Gal
3	EconoCem	ECONOCEM (TM) SYSTEM	965	sack	13.5	1.68		8	8
0.10 %		<b>SA-1015, 50 LB SACK (102077046)</b>							
8 Gal		<b>FRESH WATER</b>							
0.32 %		<b>HR-5, 50 LB SK (100005050)</b>							
Fluid #	Stage Type	Fluid Name	Qty	Qty UoM	Mixing Density lbm/gal	Yield ft3/sack	Mix Fluid Gal	Rate bbl/min	Total Mix Fluid Gal
4	Biocide Water and MMCR	Biocide Water and MMCR	20	bbl	8.34			10	
0.50 gal/bbl		<b>MICRO MATRIX CEMENT RETARDER, 5 GAL PAIL (100003781)</b>							
Fluid #	Stage Type	Fluid Name	Qty	Qty UoM	Mixing Density lbm/gal	Yield ft3/sack	Mix Fluid Gal	Rate bbl/min	Total Mix Fluid Gal
5	Biocide Water	Biocide Water	374.8	bbl	8.34			8	
Cement Left In Pipe		Amount	0 ft		Reason			<b>WET SHOE</b>	
<b>Comment :</b> ESTIMATED TOP OF SPACER @ 209'. TOP OF LEAD @ 1893'. TOP OF TAIL @ 7629'. HAD TO REPLACE BAD VALVE ON THE MANIFOLD AND PRESSURE TEST TWICE.									

2.0 Real-Time Job Summary

2.1 Job Event Log

Type	Seq. No.	Activity	Graph Label	Date	Time	Source	Comments
Event	1	Call Out	Call Out	8/15/2018	11:30:00	USER	For Location @ 17:30
Event	2	Depart Yard Safety Meeting	Depart Yard Safety Meeting	8/15/2018	15:30:00	USER	Journey management meeting held prior to departure
Event	3	Depart from Service Center or Other Site	Depart from Service Center or Other Site	8/15/2018	15:45:00	USER	
Event	4	Arrive at Location from Service Center	Arrive at Location from Service Center	8/15/2018	16:25:00	USER	15 MILES. Discussed numbers and job procedures with Customer.
Event	5	Safety Meeting - Pre Rig-Up	Safety Meeting - Pre Rig-Up	8/15/2018	16:50:00	USER	JSA to discuss the hazards of rig-up
Event	6	Casing on Bottom	Casing on Bottom	8/15/2018	16:52:00	USER	CASING LANDED

Event	7	Rig-Up Equipment	Rig-Up Equipment	8/15/2018	16:55:00	USER	Rig-up all surface lines and equipmnet
Event	8	Circulate Well	Circulate Well	8/15/2018	17:15:00	USER	RIG UP PLUG CONTAINER AND MANIFOLD FOR RIG TO CIRCULATE
Event	9	Pre-Job Safety Meeting	Pre-Job Safety Meeting	8/15/2018	18:35:00	USER	With all essential personnel, to discuss the hazards of pumping the job, and pump schedule.
Event	10	Start Job	Start Job	8/15/2018	20:25:00	USER	
Event	11	Test Lines	Test Lines	8/15/2018	20:37:00	USER	Load line with 2 bbls of water. Test lines @ 6520 psi. HAD TO PERFORM PRESSURE TEST TWICE DUE TO BAD VALVE ON THE MANIFOLD.
Event	12	Pump Spacer	Pump Spacer	8/15/2018	21:12:51	USER	BATCH/ WEIGHT/ PUMP 80 BBLs OF TUNED SPACER III WITH SURFACTANS @ 10.5 PPG.
Event	13	Other	Other	8/15/2018	21:34:46	COM4	
Event	14	Drop Bottom Plug	Drop Bottom Plug	8/15/2018	21:47:00	USER	Pre-loaded bottom plug in plug container, verifeid by customer rep

Event	15	Pump Lead Cement	Pump Lead Cement	8/15/2018	21:49:00	USER	BATCH/ WEIGH/ PUMP 625 SKS (177 BBLS) OF GASSTOP CEMENT USING LATEX WATER @ 13.2 ppg, verified with pressurized scales
Event	16	Other	Other	8/15/2018	21:51:28	COM4	
Event	17	Pump Tail Cement	Pump Tail Cement	8/15/2018	22:19:00	USER	WEIGHT/ PUMP 965 SKS (288.7 BBLS) OF ECONOCEM @ 13.5 ppg, verified with pressurized scales.
Event	18	Shutdown	Shutdown	8/15/2018	23:06:00	USER	Finished pumping cement
Event	19	Drop Top Plug	Drop Top Plug	8/15/2018	23:20:00	USER	Pre-loaded top plug in plug container verified by customer rep.
Event	20	Pump Displacement - Start	Pump Displacement - Start	8/15/2018	23:22:00	USER	394.8 BBLS OF FRESH WATER. FIRST 20 BBLS WITH MMCR. REMAINING WITH BIOCID. LAST 20 BBLS FRESH WATER TO CLEAN LINE
Event	21	Bump Plug	Bump Plug	8/16/2018	00:33:00	USER	@500 psi over final circulating pressure of 2680 psi. PER CUSTOMER HOLD 3000 PSI CASING TEST FOR 15 MIN.
Event	22	Pump Water	Pump Water	8/16/2018	00:52:00	USER	Open wet shoe sub @ 4715 psi, and pump 5 bbl wet shoe

---

Event	23	Check Floats	Check Floats	8/16/2018	00:56:00	USER	Floats held. 3 bbls back
-------	----	--------------	--------------	-----------	----------	------	--------------------------

---

Event	24	End Job	End Job	8/16/2018	00:57:36	COM4	
-------	----	---------	---------	-----------	----------	------	--

---

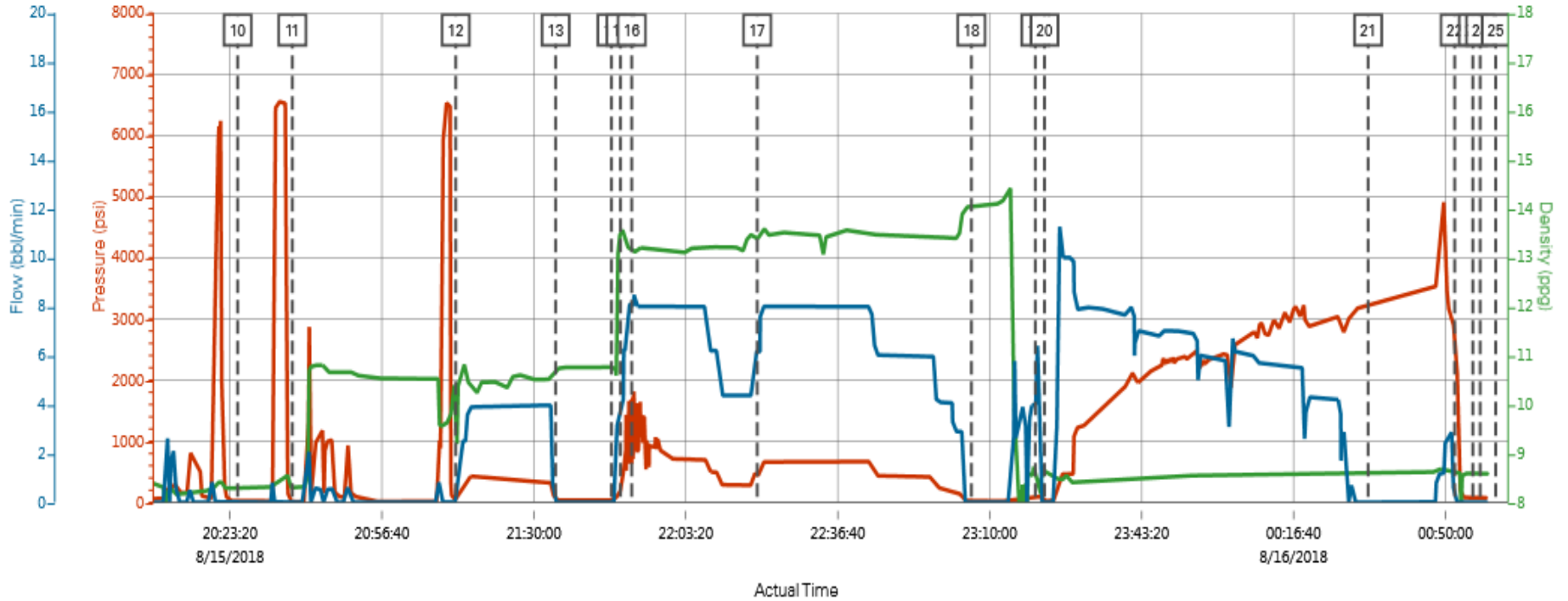
Event	25	Pre-Rig Down Safety Meeting	Pre-Rig Down Safety Meeting	8/16/2018	01:01:00	USER	JSA to discuss the hazards of rig-down
-------	----	-----------------------------	-----------------------------	-----------	----------	------	--

---

3.0 Attachments

3.1 Job Chart

Custom Results



PS Pump Press (psi) DH Density (ppg) Comb Pump Rate (bbl/min)