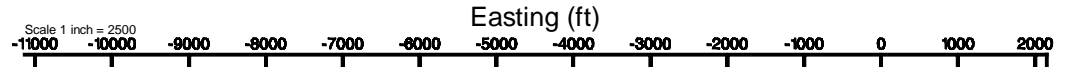


KERR-MCGEE OIL & GAS ONSHORE LP (WA)

Location: COLORADO Slot: SLOT#29 ZELDA 25-6HZ(373'FNL & 1234'FWL,SEC.25)
 Field: WELD COUNTY (UTM/TRUE NORTH)Well: ZELDA 25-6HZ
 Facility: SEC.25-T2N-R65W Wellbore: ZELDA 25-6HZ PWB

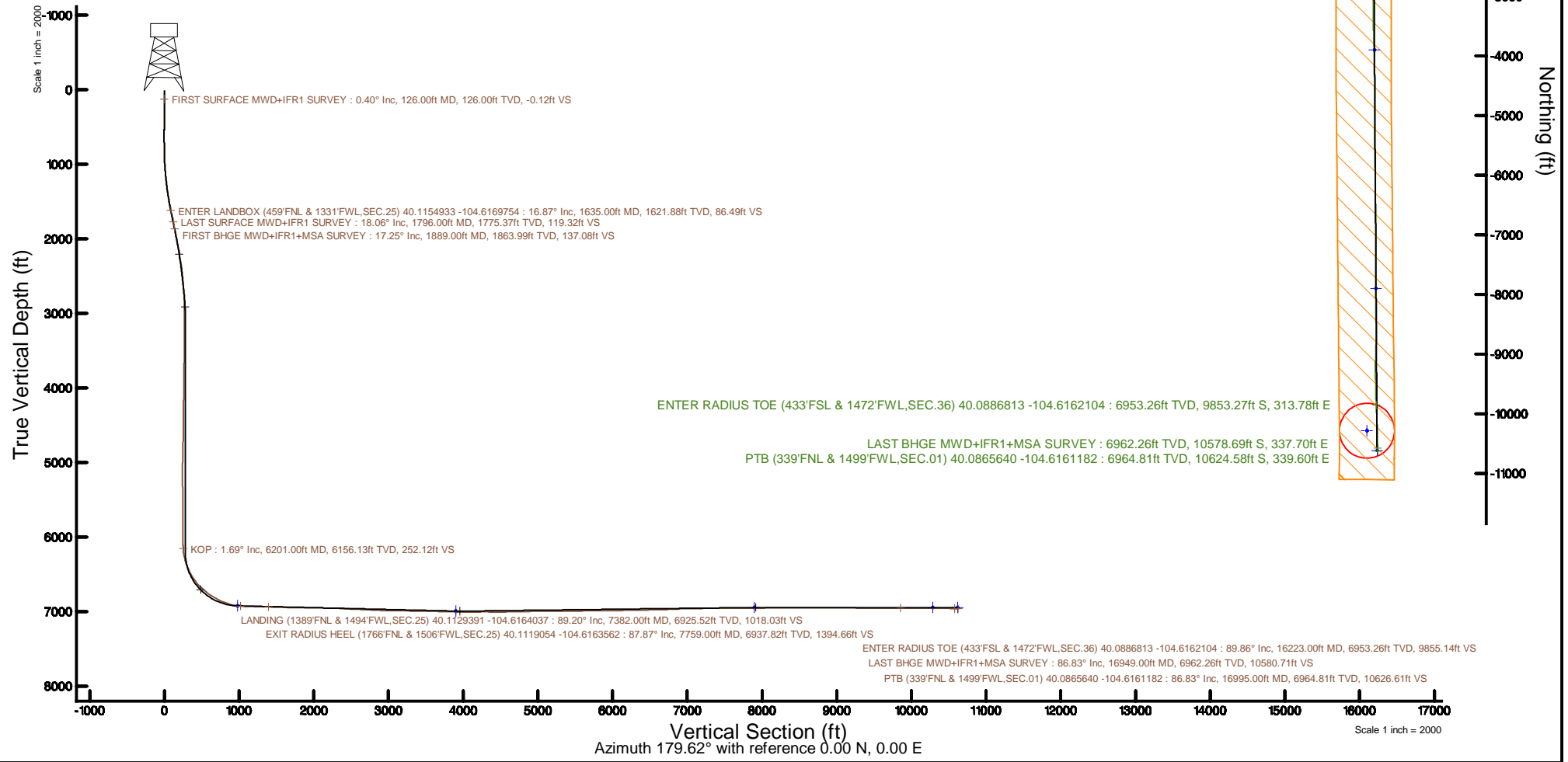


| | |
|---|--|
| Plot reference wellpath is ZELDA 25-6HZ PWP Rev-A.0 | Grid System: NAD83 / UTM Zone 13 North, US feet |
| True vertical depths are referenced to Xtreme 22 (17) (RT) | * = Wellpath was transformed from a different geodetic datum |
| Measured depths are referenced to Xtreme 22 (17) (RT) | North Reference: True north |
| Xtreme 22 (17) (RT) to Mean Sea Level: 4920 feet | Scale: True distance |
| Mean Sea Level to Mud line (At Slot: SLOT#29 ZELDA 25-6HZ(373'FNL & 1234'FWL,SEC.25)): 0 feet | Depths are in feet |
| Coordinates are in feet referenced to Slot | Created by: painsetr on 2018-08-20 |
| | Database: WA_DEN Anadarko_Defn |



SLOT#29 ZELDA 25-6HZ(373'FNL & 1234'FWL,SEC.25)

FIRST SURFACE MWD+IFR1 SURVEY : 126.00ft TVD, 0.11ft N, 0.36ft W
 ENTER LANDBOX (459'FNL & 1331'FWL,SEC.25) 40.1154933 -104.6169754 : 1621.88ft TVD, 85.83ft S, 99.72ft E
 LAST SURFACE MWD+IFR1 SURVEY : 1775.37ft TVD, 118.42ft S, 135.74ft E
 FIRST BHGE MWD+IFR1+MSA SURVEY : 1863.99ft TVD, 136.03ft S, 157.77ft E
 KOP : 6156.13ft TVD, 250.37ft S, 263.28ft E
 LANDING (1389'FNL & 1494'FWL,SEC.25) 40.1129391 -104.6164037 : 6925.52ft TVD, 1016.32ft S, 259.62ft E
 EXIT RADIUS HEEL (1766'FNL & 1506'FWL,SEC.25) 40.1119054 -104.6163562 : 6937.82ft TVD, 1392.87ft S, 272.92ft E



| REFERENCE WELLPATH IDENTIFICATION | | | |
|-----------------------------------|--------------------------------------|----------|---|
| Operator | KERR-MCGEE OIL & GAS ONSHORE LP (WA) | Slot | SLOT#29 ZELDA 25-6HZ(373'FNL & 1234'FWL,SEC.25) |
| Area | COLORADO | Well | ZELDA 25-6HZ |
| Field | WELD COUNTY (UTM/TRUE NORTH) | Wellbore | ZELDA 25-6HZ AWB |
| Facility | SEC.25-T2N-R65W | | |

| REPORT SETUP INFORMATION | | | |
|--------------------------|------------------------------------|----------------------|---|
| Projection System | NAD83 / UTM Zone 13 North, US feet | Software System | WellArchitect® 5.0 |
| North Reference | True | User | Painetr |
| Scale | 0.999613 | Report Generated | 8/20/2018 at 1:16 PM |
| Convergence at slot | 0.25° East | Database/Source file | WA_DEN_Anadarko_Defn/ZELDA_25-6HZ_AWP.xml |

| WELLPATH LOCATION | | | | | | |
|-----------------------|-------------------|----------|------------------|-----------------|------------------------|-----------------|
| | Local coordinates | | Grid coordinates | | Geographic coordinates | |
| | North[ft] | East[ft] | Easting[US ft] | Northing[US ft] | Latitude | Longitude |
| Slot Location | 83.64 | -3605.75 | 1747402.22 | 14569105.66 | 40°06'56.624"N | 104°37'02.395"W |
| Facility Reference Pt | | | 1751006.90 | 14569038.09 | 40°06'55.800"N | 104°36'15.984"W |
| Field Reference Pt | | | 1698235.31 | 14552047.82 | 40°04'09.600"N | 104°47'36.000"W |

| WELLPATH DATUM | | | |
|--------------------------|----------------------|--|-------------------|
| Calculation method | Minimum curvature | Xtreme 22 (17") (RT) to Facility Vertical Datum | 4920.00ft |
| Horizontal Reference Pt | Slot | Xtreme 22 (17") (RT) to Mean Sea Level | 4920.00ft |
| Vertical Reference Pt | Xtreme 22 (17") (RT) | Xtreme 22 (17") (RT) to Mud Line at Slot (SLOT#29 ZELDA 25-6HZ(373'FNL & 1234'FWL,SEC.25)) | 4920.00ft |
| MD Reference Pt | Xtreme 22 (17") (RT) | Section Origin | N 0.00, E 0.00 ft |
| Field Vertical Reference | Mean Sea Level | Section Azimuth | 179.62° |

| REFERENCE WELLPATH IDENTIFICATION | | | |
|-----------------------------------|--------------------------------------|----------|---|
| Operator | KERR-MCGEE OIL & GAS ONSHORE LP (WA) | Slot | SLOT#29 ZELDA 25-6HZ(373'FNL & 1234'FWL,SEC.25) |
| Area | COLORADO | Well | ZELDA 25-6HZ |
| Field | WELD COUNTY (UTM/TRUE NORTH) | Wellbore | ZELDA 25-6HZ AWB |
| Facility | SEC.25-T2N-R65W | | |

| WELLPATH DATA (231 stations) † = interpolated/extrapolated station | | | | | | | | | | | | |
|--|-----------------|-------------|----------|----------------|------------|-----------|-------------------|--------------------|----------------|-----------------|---------------|-------------------------------|
| MD [ft] | Inclination [°] | Azimuth [°] | TVD [ft] | Vert Sect [ft] | North [ft] | East [ft] | Grid East [US ft] | Grid North [US ft] | Latitude | Longitude | DLS [°/100ft] | Comments |
| 0.00† | 0.000 | 287.420 | 0.00 | 0.00 | 0.00 | 0.00 | 1747402.22 | 14569105.66 | 40°06'56.624"N | 104°37'02.395"W | 0.00 | |
| 17.00 | 0.000 | 287.420 | 17.00 | 0.00 | 0.00 | 0.00 | 1747402.22 | 14569105.66 | 40°06'56.624"N | 104°37'02.395"W | 0.00 | |
| 126.00 | 0.400 | 287.420 | 126.00 | -0.12 | 0.11 | -0.36 | 1747401.86 | 14569105.78 | 40°06'56.625"N | 104°37'02.400"W | 0.37 | FIRST SURFACE MWD+IFR1 SURVEY |
| 158.00 | 0.400 | 271.430 | 158.00 | -0.15 | 0.15 | -0.58 | 1747401.64 | 14569105.81 | 40°06'56.625"N | 104°37'02.402"W | 0.35 | |
| 190.00 | 0.440 | 253.590 | 190.00 | -0.12 | 0.12 | -0.81 | 1747401.41 | 14569105.78 | 40°06'56.625"N | 104°37'02.405"W | 0.43 | |
| 222.00 | 0.350 | 266.330 | 222.00 | -0.08 | 0.08 | -1.03 | 1747401.19 | 14569105.74 | 40°06'56.625"N | 104°37'02.408"W | 0.39 | |
| 253.00 | 0.310 | 303.680 | 253.00 | -0.13 | 0.12 | -1.19 | 1747401.03 | 14569105.78 | 40°06'56.625"N | 104°37'02.410"W | 0.69 | |
| 285.00 | 0.440 | 292.520 | 285.00 | -0.22 | 0.21 | -1.38 | 1747400.84 | 14569105.87 | 40°06'56.626"N | 104°37'02.413"W | 0.46 | |
| 316.00 | 0.400 | 305.180 | 315.99 | -0.33 | 0.32 | -1.57 | 1747400.64 | 14569105.98 | 40°06'56.627"N | 104°37'02.415"W | 0.33 | |
| 348.00 | 0.310 | 308.610 | 347.99 | -0.45 | 0.44 | -1.73 | 1747400.48 | 14569106.10 | 40°06'56.628"N | 104°37'02.417"W | 0.29 | |
| 380.00 | 0.400 | 316.780 | 379.99 | -0.59 | 0.57 | -1.88 | 1747400.34 | 14569106.23 | 40°06'56.630"N | 104°37'02.419"W | 0.32 | |
| 412.00 | 0.400 | 321.700 | 411.99 | -0.76 | 0.74 | -2.02 | 1747400.19 | 14569106.40 | 40°06'56.631"N | 104°37'02.421"W | 0.11 | |
| 443.00 | 0.350 | 343.060 | 442.99 | -0.93 | 0.92 | -2.12 | 1747400.10 | 14569106.57 | 40°06'56.633"N | 104°37'02.422"W | 0.48 | |
| 475.00 | 0.350 | 318.100 | 474.99 | -1.10 | 1.09 | -2.21 | 1747400.00 | 14569106.74 | 40°06'56.635"N | 104°37'02.423"W | 0.47 | |
| 506.00 | 0.440 | 320.650 | 505.99 | -1.26 | 1.25 | -2.35 | 1747399.86 | 14569106.90 | 40°06'56.636"N | 104°37'02.425"W | 0.30 | |
| 538.00 | 0.570 | 23.050 | 537.99 | -1.51 | 1.49 | -2.37 | 1747399.85 | 14569107.14 | 40°06'56.639"N | 104°37'02.425"W | 1.67 | |
| 570.00 | 0.440 | 69.720 | 569.99 | -1.69 | 1.68 | -2.19 | 1747400.02 | 14569107.33 | 40°06'56.641"N | 104°37'02.423"W | 1.30 | |
| 601.00 | 0.880 | 77.630 | 600.99 | -1.78 | 1.77 | -1.84 | 1747400.37 | 14569107.43 | 40°06'56.641"N | 104°37'02.419"W | 1.45 | |
| 633.00 | 0.970 | 82.730 | 632.98 | -1.87 | 1.86 | -1.34 | 1747400.88 | 14569107.51 | 40°06'56.642"N | 104°37'02.412"W | 0.38 | |
| 665.00 | 1.050 | 92.130 | 664.98 | -1.89 | 1.88 | -0.77 | 1747401.44 | 14569107.54 | 40°06'56.643"N | 104°37'02.405"W | 0.57 | |
| 697.00 | 1.670 | 122.370 | 696.97 | -1.62 | 1.62 | -0.09 | 1747402.13 | 14569107.28 | 40°06'56.640"N | 104°37'02.396"W | 2.90 | |
| 728.00 | 1.760 | 125.350 | 727.95 | -1.10 | 1.10 | 0.68 | 1747402.90 | 14569106.77 | 40°06'56.635"N | 104°37'02.386"W | 0.41 | |
| 760.00 | 1.630 | 121.310 | 759.94 | -0.57 | 0.58 | 1.47 | 1747403.69 | 14569106.25 | 40°06'56.630"N | 104°37'02.376"W | 0.55 | |
| 792.00 | 1.580 | 122.720 | 791.93 | -0.09 | 0.11 | 2.23 | 1747404.45 | 14569105.78 | 40°06'56.625"N | 104°37'02.366"W | 0.20 | |
| 824.00 | 1.710 | 121.750 | 823.91 | 0.40 | -0.38 | 3.01 | 1747405.23 | 14569105.29 | 40°06'56.620"N | 104°37'02.356"W | 0.42 | |
| 855.00 | 1.800 | 123.070 | 854.90 | 0.92 | -0.89 | 3.81 | 1747406.03 | 14569104.79 | 40°06'56.615"N | 104°37'02.346"W | 0.32 | |
| 887.00 | 2.070 | 125.790 | 886.88 | 1.54 | -1.50 | 4.70 | 1747406.92 | 14569104.18 | 40°06'56.609"N | 104°37'02.334"W | 0.89 | |
| 919.00 | 2.550 | 132.210 | 918.86 | 2.36 | -2.32 | 5.70 | 1747407.92 | 14569103.37 | 40°06'56.601"N | 104°37'02.322"W | 1.70 | |
| 950.00 | 2.900 | 137.310 | 949.82 | 3.40 | -3.36 | 6.74 | 1747408.97 | 14569102.33 | 40°06'56.591"N | 104°37'02.308"W | 1.37 | |
| 1013.00 | 5.050 | 134.580 | 1012.67 | 6.54 | -6.48 | 9.80 | 1747412.04 | 14569099.23 | 40°06'56.560"N | 104°37'02.269"W | 3.42 | |
| 1045.00 | 5.980 | 132.210 | 1044.52 | 8.67 | -8.59 | 12.03 | 1747414.28 | 14569097.13 | 40°06'56.539"N | 104°37'02.240"W | 2.99 | |
| 1077.00 | 6.150 | 130.980 | 1076.34 | 10.93 | -10.83 | 14.56 | 1747416.82 | 14569094.90 | 40°06'56.517"N | 104°37'02.208"W | 0.67 | |
| 1108.00 | 6.720 | 130.450 | 1107.14 | 13.21 | -13.10 | 17.20 | 1747419.46 | 14569092.65 | 40°06'56.495"N | 104°37'02.174"W | 1.85 | |
| 1140.00 | 7.950 | 131.070 | 1138.88 | 15.90 | -15.76 | 20.29 | 1747422.57 | 14569089.99 | 40°06'56.468"N | 104°37'02.134"W | 3.85 | |
| 1172.00 | 8.390 | 131.950 | 1170.56 | 18.94 | -18.78 | 23.69 | 1747425.98 | 14569086.99 | 40°06'56.438"N | 104°37'02.090"W | 1.43 | |
| 1204.00 | 8.610 | 131.860 | 1202.20 | 22.12 | -21.94 | 27.21 | 1747429.52 | 14569083.85 | 40°06'56.407"N | 104°37'02.045"W | 0.69 | |
| 1235.00 | 9.800 | 134.320 | 1232.80 | 25.54 | -25.33 | 30.83 | 1747433.15 | 14569080.48 | 40°06'56.374"N | 104°37'01.998"W | 4.04 | |
| 1267.00 | 10.060 | 134.320 | 1264.32 | 29.42 | -29.19 | 34.78 | 1747437.11 | 14569076.64 | 40°06'56.336"N | 104°37'01.947"W | 0.81 | |
| 1298.00 | 10.680 | 133.700 | 1294.82 | 33.32 | -33.06 | 38.79 | 1747441.14 | 14569072.78 | 40°06'56.297"N | 104°37'01.896"W | 2.03 | |
| 1330.00 | 11.600 | 130.800 | 1326.22 | 37.50 | -37.21 | 43.37 | 1747445.73 | 14569068.65 | 40°06'56.256"N | 104°37'01.837"W | 3.37 | |
| 1362.00 | 12.260 | 130.100 | 1357.52 | 41.83 | -41.50 | 48.41 | 1747450.78 | 14569064.39 | 40°06'56.214"N | 104°37'01.772"W | 2.11 | |
| 1393.00 | 12.520 | 129.840 | 1387.80 | 46.13 | -45.78 | 53.50 | 1747455.90 | 14569060.14 | 40°06'56.172"N | 104°37'01.706"W | 0.86 | |
| 1425.00 | 12.880 | 129.750 | 1419.02 | 50.67 | -50.28 | 58.91 | 1747461.32 | 14569055.66 | 40°06'56.127"N | 104°37'01.637"W | 1.13 | |
| 1456.00 | 13.710 | 129.840 | 1449.19 | 55.27 | -54.84 | 64.39 | 1747466.82 | 14569051.12 | 40°06'56.082"N | 104°37'01.566"W | 2.68 | |
| 1488.00 | 14.020 | 130.360 | 1480.26 | 60.25 | -59.78 | 70.25 | 1747472.70 | 14569046.21 | 40°06'56.033"N | 104°37'01.491"W | 1.04 | |

| REFERENCE WELLPATH IDENTIFICATION | | | | |
|-----------------------------------|--------------------------------------|--|----------|---|
| Operator | KERR-MCGEE OIL & GAS ONSHORE LP (WA) | | Slot | SLOT#29 ZELDA 25-6HZ(373'FNL & 1234'FWL,SEC.25) |
| Area | COLORADO | | Well | ZELDA 25-6HZ |
| Field | WELD COUNTY (UTM/TRUE NORTH) | | Wellbore | ZELDA 25-6HZ AWB |
| Facility | SEC.25-T2N-R65W | | | |

| WELLPATH DATA (231 stations) † = interpolated/extrapolated station | | | | | | | | | | | | |
|--|-----------------|-------------|----------|----------------|------------|-----------|-------------------|--------------------|----------------|-----------------|---------------|---|
| MD (ft) | Inclination (°) | Azimuth (°) | TVD (ft) | Vert Sect (ft) | North (ft) | East (ft) | Grid East (US ft) | Grid North (US ft) | Latitude | Longitude | DLS (°/100ft) | Comments |
| 1520.00 | 14.630 | 130.190 | 1511.26 | 65.41 | -64.90 | 76.29 | 1747478.76 | 14569041.12 | 40°06'55.983"N | 104°37'01.413"W | 1.91 | |
| 1551.00 | 15.560 | 131.590 | 1541.19 | 70.73 | -70.19 | 82.39 | 1747484.88 | 14569035.86 | 40°06'55.930"N | 104°37'01.334"W | 3.22 | |
| 1583.00 | 15.910 | 131.420 | 1571.99 | 76.53 | -75.94 | 88.89 | 1747491.40 | 14569030.14 | 40°06'55.874"N | 104°37'01.251"W | 1.10 | |
| 1615.00 | 16.480 | 132.650 | 1602.72 | 82.55 | -81.91 | 95.52 | 1747498.05 | 14569024.19 | 40°06'55.815"N | 104°37'01.166"W | 2.08 | |
| 1635.00† | 16.873 | 133.336 | 1621.88 | 86.49 | -85.83 | 99.72 | 1747502.27 | 14569020.30 | 40°06'55.776"N | 104°37'01.112"W | 2.20 | ENTER LANDBOX (459'FNL & 1331'FWL,SEC.25) 40.1154933 -104.6169754 |
| 1646.00 | 17.090 | 133.700 | 1632.40 | 88.72 | -88.04 | 102.05 | 1747504.60 | 14569018.10 | 40°06'55.754"N | 104°37'01.082"W | 2.20 | |
| 1678.00 | 17.400 | 134.060 | 1662.96 | 95.34 | -94.62 | 108.88 | 1747511.47 | 14569011.55 | 40°06'55.689"N | 104°37'00.994"W | 1.02 | |
| 1710.00 | 17.580 | 133.180 | 1693.48 | 102.02 | -101.25 | 115.85 | 1747518.45 | 14569004.95 | 40°06'55.623"N | 104°37'00.904"W | 1.00 | |
| 1741.00 | 17.710 | 131.070 | 1723.02 | 108.37 | -107.55 | 122.81 | 1747525.45 | 14568998.68 | 40°06'55.561"N | 104°37'00.814"W | 2.11 | |
| 1796.00 | 18.060 | 129.050 | 1775.37 | 119.32 | -118.42 | 135.74 | 1747538.42 | 14568987.88 | 40°06'55.454"N | 104°37'00.648"W | 1.29 | LAST SURFACE MWD+IFR1 SURVEY |
| 1889.00 | 17.250 | 128.210 | 1863.99 | 137.08 | -136.03 | 157.77 | 1747560.51 | 14568970.37 | 40°06'55.280"N | 104°37'00.364"W | 0.91 | FIRST BHGE MWD+IFR1+MSA SURVEY |
| 1976.00 | 16.210 | 125.440 | 1947.30 | 152.23 | -151.05 | 177.80 | 1747580.60 | 14568955.44 | 40°06'55.131"N | 104°37'00.106"W | 1.51 | |
| 2063.00 | 16.500 | 130.130 | 2030.79 | 167.37 | -166.06 | 197.14 | 1747600.00 | 14568940.52 | 40°06'54.983"N | 104°36'59.858"W | 1.55 | |
| 2151.00 | 15.490 | 133.940 | 2115.38 | 183.70 | -182.26 | 215.16 | 1747618.08 | 14568924.40 | 40°06'54.823"N | 104°36'59.626"W | 1.65 | |
| 2238.00 | 13.640 | 139.950 | 2199.59 | 199.71 | -198.18 | 230.13 | 1747633.11 | 14568908.55 | 40°06'54.666"N | 104°36'59.433"W | 2.74 | |
| 2325.00 | 11.850 | 142.450 | 2284.44 | 214.73 | -213.12 | 242.18 | 1747645.21 | 14568893.67 | 40°06'54.518"N | 104°36'59.278"W | 2.15 | |
| 2413.00 | 10.010 | 144.880 | 2370.84 | 228.21 | -226.54 | 252.08 | 1747655.18 | 14568880.30 | 40°06'54.385"N | 104°36'59.150"W | 2.16 | |
| 2500.00 | 7.680 | 149.030 | 2456.80 | 239.43 | -237.71 | 259.43 | 1747662.56 | 14568869.17 | 40°06'54.275"N | 104°36'59.056"W | 2.78 | |
| 2588.00 | 5.820 | 160.290 | 2544.19 | 248.71 | -246.95 | 263.96 | 1747667.13 | 14568859.95 | 40°06'54.184"N | 104°36'58.998"W | 2.58 | |
| 2675.00 | 4.610 | 167.700 | 2630.83 | 256.29 | -254.52 | 266.19 | 1747669.40 | 14568852.39 | 40°06'54.109"N | 104°36'58.969"W | 1.59 | |
| 2763.00 | 3.990 | 187.410 | 2718.59 | 262.78 | -261.01 | 266.55 | 1747669.78 | 14568845.90 | 40°06'54.045"N | 104°36'58.964"W | 1.81 | |
| 2851.00 | 2.070 | 206.000 | 2806.46 | 267.24 | -265.48 | 265.46 | 1747668.71 | 14568841.43 | 40°06'54.001"N | 104°36'58.978"W | 2.42 | |
| 2938.00 | 0.650 | 260.440 | 2893.44 | 268.73 | -266.97 | 264.28 | 1747667.54 | 14568839.94 | 40°06'53.986"N | 104°36'58.993"W | 2.04 | |
| 3026.00 | 0.300 | 299.860 | 2981.43 | 268.69 | -266.94 | 263.59 | 1747666.85 | 14568839.96 | 40°06'53.986"N | 104°36'59.002"W | 0.52 | |
| 3113.00 | 0.360 | 281.920 | 3068.43 | 268.52 | -266.77 | 263.12 | 1747666.39 | 14568840.13 | 40°06'53.988"N | 104°36'59.008"W | 0.14 | |
| 3201.00 | 0.320 | 327.400 | 3156.43 | 268.25 | -266.51 | 262.72 | 1747665.98 | 14568840.39 | 40°06'53.990"N | 104°36'59.013"W | 0.30 | |
| 3288.00 | 0.290 | 15.610 | 3243.43 | 267.83 | -266.09 | 262.65 | 1747665.91 | 14568840.81 | 40°06'53.994"N | 104°36'59.014"W | 0.29 | |
| 3376.00 | 0.240 | 52.780 | 3331.43 | 267.51 | -265.76 | 262.86 | 1747666.11 | 14568841.14 | 40°06'53.998"N | 104°36'59.012"W | 0.20 | |
| 3463.00 | 0.560 | 16.570 | 3418.43 | 266.99 | -265.25 | 263.12 | 1747666.38 | 14568841.66 | 40°06'54.003"N | 104°36'59.008"W | 0.45 | |
| 3576.00 | 0.610 | 25.030 | 3531.42 | 265.92 | -264.17 | 263.53 | 1747666.78 | 14568842.73 | 40°06'54.013"N | 104°36'59.003"W | 0.09 | |
| 3663.00 | 0.510 | 18.810 | 3618.42 | 265.14 | -263.38 | 263.85 | 1747667.10 | 14568843.52 | 40°06'54.021"N | 104°36'58.999"W | 0.13 | |
| 3751.00 | 0.740 | 346.820 | 3706.41 | 264.21 | -262.46 | 263.85 | 1747667.09 | 14568844.44 | 40°06'54.030"N | 104°36'58.999"W | 0.47 | |
| 3838.00 | 0.860 | 357.830 | 3793.40 | 263.01 | -261.26 | 263.70 | 1747666.94 | 14568845.64 | 40°06'54.042"N | 104°36'59.001"W | 0.22 | |
| 3926.00 | 0.880 | 357.030 | 3881.39 | 261.68 | -259.93 | 263.64 | 1747666.87 | 14568846.97 | 40°06'54.055"N | 104°36'59.002"W | 0.03 | |
| 4013.00 | 0.690 | 3.410 | 3968.39 | 260.49 | -258.74 | 263.63 | 1747666.86 | 14568848.16 | 40°06'54.067"N | 104°36'59.002"W | 0.24 | |
| 4101.00 | 0.780 | 352.010 | 4056.38 | 259.37 | -257.61 | 263.58 | 1747666.81 | 14568849.29 | 40°06'54.078"N | 104°36'59.002"W | 0.19 | |
| 4188.00 | 0.650 | 353.090 | 4143.37 | 258.29 | -256.54 | 263.44 | 1747666.66 | 14568850.36 | 40°06'54.089"N | 104°36'59.004"W | 0.15 | |
| 4276.00 | 0.340 | 349.280 | 4231.37 | 257.54 | -255.79 | 263.33 | 1747666.55 | 14568851.11 | 40°06'54.096"N | 104°36'59.006"W | 0.35 | |
| 4364.00 | 0.260 | 342.210 | 4319.37 | 257.09 | -255.34 | 263.22 | 1747666.44 | 14568851.56 | 40°06'54.101"N | 104°36'59.007"W | 0.10 | |
| 4451.00 | 0.650 | 324.000 | 4406.36 | 256.50 | -254.75 | 262.87 | 1747666.08 | 14568852.14 | 40°06'54.106"N | 104°36'59.011"W | 0.47 | |
| 4539.00 | 0.870 | 333.490 | 4494.36 | 255.49 | -253.75 | 262.28 | 1747665.49 | 14568853.14 | 40°06'54.116"N | 104°36'59.019"W | 0.29 | |
| 4627.00 | 1.270 | 334.010 | 4582.34 | 254.01 | -252.28 | 261.56 | 1747664.76 | 14568854.61 | 40°06'54.131"N | 104°36'59.028"W | 0.45 | |
| 4714.00 | 1.340 | 335.440 | 4669.32 | 252.22 | -250.48 | 260.71 | 1747663.90 | 14568856.40 | 40°06'54.149"N | 104°36'59.039"W | 0.09 | |
| 4802.00 | 0.430 | 27.660 | 4757.31 | 250.99 | -249.26 | 260.44 | 1747663.62 | 14568857.63 | 40°06'54.161"N | 104°36'59.043"W | 1.28 | |
| 4889.00 | 1.540 | 16.920 | 4844.29 | 249.58 | -247.85 | 260.93 | 1747664.11 | 14568859.04 | 40°06'54.175"N | 104°36'59.037"W | 1.29 | |

| REFERENCE WELLPATH IDENTIFICATION | | | | |
|-----------------------------------|--------------------------------------|--|----------|---|
| Operator | KERR-MCGEE OIL & GAS ONSHORE LP (WA) | | Slot | SLOT#29 ZELDA 25-6HZ(373'FNL & 1234'FWL,SEC.25) |
| Area | COLORADO | | Well | ZELDA 25-6HZ |
| Field | WELD COUNTY (UTM/TRUE NORTH) | | Wellbore | ZELDA 25-6HZ AWB |
| Facility | SEC.25-T2N-R65W | | | |

| WELLPATH DATA (231 stations) † = interpolated/extrapolated station | | | | | | | | | | | | |
|--|-----------------|-------------|----------|----------------|------------|-----------|-------------------|--------------------|----------------|-----------------|---------------|---|
| MD (ft) | Inclination (°) | Azimuth (°) | TVD (ft) | Vert Sect (ft) | North (ft) | East (ft) | Grid East (US ft) | Grid North (US ft) | Latitude | Longitude | DLS (°/100ft) | Comments |
| 4977.00 | 2.180 | 11.390 | 4932.25 | 246.81 | -245.08 | 261.60 | 1747664.77 | 14568861.81 | 40°06'54.202"N | 104°36'59.028"W | 0.75 | |
| 5064.00 | 0.830 | 34.790 | 5019.22 | 244.68 | -242.94 | 262.29 | 1747665.45 | 14568863.95 | 40°06'54.223"N | 104°36'59.019"W | 1.67 | |
| 5152.00 | 1.350 | 12.540 | 5107.20 | 243.15 | -241.40 | 262.88 | 1747666.03 | 14568865.49 | 40°06'54.238"N | 104°36'59.011"W | 0.75 | |
| 5239.00 | 0.930 | 171.030 | 5194.19 | 242.85 | -241.10 | 263.21 | 1747666.36 | 14568865.79 | 40°06'54.241"N | 104°36'59.007"W | 2.58 | |
| 5327.00 | 0.920 | 183.150 | 5282.18 | 244.26 | -242.51 | 263.28 | 1747666.44 | 14568866.38 | 40°06'54.227"N | 104°36'59.006"W | 0.22 | |
| 5414.00 | 0.500 | 194.200 | 5369.18 | 245.32 | -243.57 | 263.15 | 1747666.31 | 14568863.32 | 40°06'54.217"N | 104°36'59.008"W | 0.51 | |
| 5501.00 | 0.180 | 182.170 | 5456.17 | 245.83 | -244.08 | 263.05 | 1747666.22 | 14568862.81 | 40°06'54.212"N | 104°36'59.009"W | 0.37 | |
| 5589.00 | 0.620 | 156.830 | 5544.17 | 246.40 | -244.65 | 263.24 | 1747666.40 | 14568862.24 | 40°06'54.206"N | 104°36'59.007"W | 0.53 | |
| 5676.00 | 0.250 | 159.540 | 5631.17 | 247.02 | -245.27 | 263.49 | 1747666.66 | 14568861.63 | 40°06'54.200"N | 104°36'59.004"W | 0.43 | |
| 5763.00 | 0.830 | 171.330 | 5718.16 | 247.82 | -246.07 | 263.65 | 1747666.82 | 14568860.83 | 40°06'54.192"N | 104°36'59.002"W | 0.68 | |
| 5850.00 | 0.940 | 161.990 | 5805.15 | 249.12 | -247.37 | 263.96 | 1747667.14 | 14568859.53 | 40°06'54.179"N | 104°36'58.997"W | 0.21 | |
| 5939.00 | 0.670 | 291.160 | 5894.15 | 249.63 | -247.87 | 263.70 | 1747666.88 | 14568859.02 | 40°06'54.174"N | 104°36'59.001"W | 1.64 | |
| 6026.00 | 0.250 | 186.080 | 5981.15 | 249.63 | -247.88 | 263.21 | 1747666.39 | 14568859.02 | 40°06'54.174"N | 104°36'59.007"W | 0.89 | |
| 6113.00 | 0.660 | 182.280 | 6068.14 | 250.32 | -248.57 | 263.17 | 1747666.35 | 14568858.33 | 40°06'54.168"N | 104°36'59.008"W | 0.47 | |
| 6201.00 | 1.690 | 174.040 | 6156.13 | 252.12 | -250.37 | 263.28 | 1747666.48 | 14568856.53 | 40°06'54.150"N | 104°36'59.006"W | 1.18 | KOP |
| 6288.00 | 10.800 | 184.810 | 6242.52 | 261.53 | -259.78 | 262.73 | 1747665.96 | 14568847.11 | 40°06'54.057"N | 104°36'59.013"W | 10.51 | |
| 6376.00 | 17.690 | 183.350 | 6327.76 | 283.11 | -281.37 | 261.26 | 1747664.58 | 14568825.53 | 40°06'53.843"N | 104°36'59.032"W | 7.84 | |
| 6463.00 | 22.260 | 178.410 | 6409.51 | 312.79 | -311.06 | 260.94 | 1747664.40 | 14568795.85 | 40°06'53.550"N | 104°36'59.036"W | 5.60 | |
| 6551.00 | 27.430 | 179.540 | 6489.34 | 349.75 | -348.01 | 261.57 | 1747665.18 | 14568758.91 | 40°06'53.185"N | 104°36'59.028"W | 5.90 | |
| 6638.00 | 35.860 | 183.120 | 6563.35 | 395.31 | -393.58 | 260.34 | 1747664.15 | 14568713.36 | 40°06'52.735"N | 104°36'59.044"W | 9.92 | |
| 6726.00 | 40.250 | 184.750 | 6632.62 | 449.38 | -447.68 | 256.58 | 1747660.62 | 14568659.27 | 40°06'52.200"N | 104°36'59.093"W | 5.12 | |
| 6813.00 | 47.480 | 182.310 | 6695.31 | 509.48 | -507.81 | 252.96 | 1747657.26 | 14568599.14 | 40°06'51.606"N | 104°36'59.139"W | 8.53 | |
| 6901.00 | 53.240 | 180.520 | 6751.43 | 577.18 | -575.52 | 251.33 | 1747655.92 | 14568531.45 | 40°06'50.937"N | 104°36'59.160"W | 6.73 | |
| 6988.00 | 58.610 | 178.530 | 6800.16 | 649.22 | -647.55 | 251.96 | 1747656.87 | 14568459.46 | 40°06'50.225"N | 104°36'59.152"W | 6.46 | |
| 7076.00 | 62.840 | 178.390 | 6843.18 | 725.94 | -724.27 | 254.03 | 1747659.26 | 14568382.78 | 40°06'49.467"N | 104°36'59.125"W | 4.81 | |
| 7163.00 | 68.960 | 180.440 | 6878.69 | 805.32 | -803.63 | 254.81 | 1747660.38 | 14568303.45 | 40°06'48.682"N | 104°36'59.115"W | 7.36 | |
| 7250.00 | 74.440 | 178.760 | 6906.00 | 887.88 | -886.20 | 255.40 | 1747661.33 | 14568220.92 | 40°06'47.866"N | 104°36'59.108"W | 6.56 | |
| 7338.00 | 83.590 | 177.630 | 6922.75 | 974.15 | -972.45 | 258.13 | 1747664.43 | 14568134.71 | 40°06'47.014"N | 104°36'59.073"W | 10.47 | |
| 7382.00 | 89.200 | 178.490 | 6925.52 | 1018.03 | -1016.32 | 259.62 | 1747666.10 | 14568090.87 | 40°06'46.581"N | 104°36'59.053"W | 12.90 | LANDING (1389'FNL & 1494'FWL,SEC.25) 40.1129391 -104.6164037 |
| 7425.00 | 88.030 | 178.330 | 6926.56 | 1061.00 | -1059.29 | 260.81 | 1747667.48 | 14568047.92 | 40°06'46.156"N | 104°36'59.038"W | 2.75 | |
| 7513.00 | 87.200 | 177.600 | 6930.22 | 1148.89 | -1147.16 | 263.93 | 1747670.98 | 14567960.10 | 40°06'45.288"N | 104°36'58.998"W | 1.26 | |
| 7600.00 | 88.740 | 177.890 | 6933.30 | 1235.79 | -1234.03 | 267.35 | 1747674.77 | 14567873.27 | 40°06'44.429"N | 104°36'58.954"W | 1.80 | |
| 7687.00 | 88.400 | 177.870 | 6935.47 | 1322.72 | -1320.94 | 270.57 | 1747678.36 | 14567786.41 | 40°06'43.570"N | 104°36'58.913"W | 0.39 | |
| 7759.00† | 87.868 | 178.394 | 6937.82 | 1394.66 | -1392.87 | 272.92 | 1747681.02 | 14567714.53 | 40°06'42.859"N | 104°36'58.882"W | 1.04 | EXIT RADIUS HEEL (1766'FNL & 1506'FWL,SEC.25) 40.1119054 -104.6163562 |
| 7775.00 | 87.750 | 178.510 | 6938.43 | 1410.64 | -1408.85 | 273.35 | 1747681.52 | 14567698.55 | 40°06'42.702"N | 104°36'58.877"W | 1.04 | |
| 7862.00 | 88.360 | 179.450 | 6941.38 | 1497.58 | -1495.78 | 274.90 | 1747683.44 | 14567611.66 | 40°06'41.842"N | 104°36'58.857"W | 1.29 | |
| 7950.00 | 88.300 | 178.590 | 6943.95 | 1585.54 | -1583.73 | 276.40 | 1747685.32 | 14567523.75 | 40°06'40.973"N | 104°36'58.838"W | 0.98 | |
| 8037.00 | 88.430 | 179.140 | 6946.43 | 1672.50 | -1670.68 | 278.12 | 1747687.42 | 14567436.85 | 40°06'40.114"N | 104°36'58.815"W | 0.65 | |
| 8125.00 | 89.540 | 180.700 | 6947.99 | 1760.48 | -1758.66 | 278.25 | 1747687.92 | 14567348.90 | 40°06'39.245"N | 104°36'58.814"W | 2.18 | |
| 8213.00 | 89.510 | 180.050 | 6948.72 | 1848.47 | -1846.66 | 277.67 | 1747687.72 | 14567260.94 | 40°06'38.375"N | 104°36'58.821"W | 0.74 | |
| 8300.00 | 90.060 | 179.200 | 6949.04 | 1935.47 | -1933.65 | 278.24 | 1747688.67 | 14567173.98 | 40°06'37.515"N | 104°36'58.814"W | 1.16 | |
| 8388.00 | 89.010 | 181.440 | 6949.76 | 2023.45 | -2021.64 | 277.75 | 1747688.55 | 14567086.02 | 40°06'36.646"N | 104°36'58.820"W | 2.81 | |
| 8476.00 | 88.400 | 180.900 | 6951.75 | 2111.39 | -2109.60 | 275.95 | 1747687.14 | 14566998.09 | 40°06'35.777"N | 104°36'58.843"W | 0.93 | |
| 8563.00 | 88.270 | 180.850 | 6954.28 | 2198.34 | -2196.55 | 274.62 | 1747686.18 | 14566911.17 | 40°06'34.917"N | 104°36'58.861"W | 0.16 | |
| 8651.00 | 88.060 | 180.740 | 6957.09 | 2286.27 | -2284.50 | 273.40 | 1747685.34 | 14566823.25 | 40°06'34.048"N | 104°36'58.876"W | 0.27 | |

| REFERENCE WELLPATH IDENTIFICATION | | | |
|-----------------------------------|--------------------------------------|----------|---|
| Operator | KERR-MCGEE OIL & GAS ONSHORE LP (WA) | Slot | SLOT#29 ZELDA 25-6HZ(373'FNL & 1234'FWL,SEC.25) |
| Area | COLORADO | Well | ZELDA 25-6HZ |
| Field | WELD COUNTY (UTM/TRUE NORTH) | Wellbore | ZELDA 25-6HZ AWB |
| Facility | SEC.25-T2N-R65W | | |

WELLPATH DATA (231 stations)

| MD [ft] | Inclination [°] | Azimuth [°] | TVD [ft] | Vert Sect [ft] | North [ft] | East [ft] | Grid East [US ft] | Grid North [US ft] | Latitude | Longitude | DLS ["/100ft] | Comments |
|----------|-----------------|-------------|----------|----------------|------------|-----------|-------------------|--------------------|----------------|-----------------|---------------|----------|
| 8739.00 | 87.510 | 180.220 | 6960.49 | 2374.20 | -2372.43 | 272.67 | 1747684.98 | 14566735.35 | 40°06'33.179"N | 104°36'58.886"W | 0.86 | |
| 8826.00 | 86.980 | 179.210 | 6964.68 | 2461.09 | -2459.33 | 273.10 | 1747685.79 | 14566648.49 | 40°06'32.321"N | 104°36'58.880"W | 1.31 | |
| 8914.00 | 87.540 | 180.360 | 6968.88 | 2548.99 | -2547.22 | 273.43 | 1747686.50 | 14566560.63 | 40°06'31.452"N | 104°36'58.876"W | 1.45 | |
| 9001.00 | 87.070 | 180.000 | 6972.97 | 2635.89 | -2634.13 | 273.15 | 1747686.60 | 14566473.76 | 40°06'30.593"N | 104°36'58.879"W | 0.68 | |
| 9089.00 | 87.290 | 181.260 | 6977.30 | 2723.77 | -2722.01 | 272.19 | 1747686.01 | 14566385.90 | 40°06'29.725"N | 104°36'58.892"W | 1.45 | |
| 9176.00 | 87.480 | 181.110 | 6981.27 | 2810.64 | -2808.90 | 270.39 | 1747684.59 | 14566299.04 | 40°06'28.866"N | 104°36'58.915"W | 0.28 | |
| 9264.00 | 86.790 | 180.890 | 6985.67 | 2898.51 | -2896.78 | 268.86 | 1747683.43 | 14566211.19 | 40°06'27.998"N | 104°36'58.935"W | 0.82 | |
| 9351.00 | 88.920 | 181.190 | 6988.93 | 2985.42 | -2983.70 | 267.28 | 1747682.23 | 14566124.30 | 40°06'27.139"N | 104°36'58.955"W | 2.47 | |
| 9439.00 | 88.460 | 180.350 | 6990.94 | 3073.37 | -3071.67 | 266.10 | 1747681.42 | 14566036.36 | 40°06'26.269"N | 104°36'58.970"W | 1.09 | |
| 9526.00 | 90.120 | 180.330 | 6992.02 | 3160.36 | -3158.66 | 265.58 | 1747681.28 | 14565949.41 | 40°06'25.410"N | 104°36'58.977"W | 1.91 | |
| 9614.00 | 89.880 | 180.080 | 6992.02 | 3248.35 | -3246.66 | 265.27 | 1747681.35 | 14565861.44 | 40°06'24.540"N | 104°36'58.981"W | 0.39 | |
| 9702.00 | 89.290 | 179.440 | 6992.65 | 3336.35 | -3334.65 | 265.63 | 1747682.09 | 14565773.48 | 40°06'23.671"N | 104°36'58.976"W | 0.99 | |
| 9790.00 | 89.110 | 179.370 | 6993.88 | 3424.34 | -3422.64 | 266.55 | 1747683.38 | 14565685.53 | 40°06'22.801"N | 104°36'58.965"W | 0.22 | |
| 9877.00 | 89.080 | 179.320 | 6995.26 | 3511.33 | -3509.62 | 267.54 | 1747684.75 | 14565598.59 | 40°06'21.941"N | 104°36'58.952"W | 0.07 | |
| 9965.00 | 88.430 | 178.300 | 6997.17 | 3599.30 | -3597.58 | 269.37 | 1747686.96 | 14565510.67 | 40°06'21.072"N | 104°36'58.928"W | 1.37 | |
| 10052.00 | 88.310 | 178.210 | 6999.64 | 3686.24 | -3684.51 | 272.02 | 1747689.98 | 14565423.80 | 40°06'20.213"N | 104°36'58.894"W | 0.17 | |
| 10140.00 | 88.580 | 178.210 | 7002.03 | 3774.18 | -3772.43 | 274.77 | 1747693.10 | 14565335.92 | 40°06'19.344"N | 104°36'58.859"W | 0.31 | |
| 10227.00 | 88.190 | 177.450 | 7004.48 | 3861.10 | -3859.33 | 278.06 | 1747696.77 | 14565249.06 | 40°06'18.486"N | 104°36'58.817"W | 0.98 | |
| 10315.00 | 88.580 | 179.700 | 7006.96 | 3949.05 | -3947.26 | 280.25 | 1747699.33 | 14565161.18 | 40°06'17.617"N | 104°36'58.788"W | 2.59 | |
| 10403.00 | 89.970 | 179.890 | 7008.08 | 4037.04 | -4035.25 | 280.56 | 1747700.03 | 14565073.22 | 40°06'16.747"N | 104°36'58.784"W | 1.59 | |
| 10490.00 | 91.020 | 179.510 | 7007.33 | 4124.03 | -4122.25 | 281.02 | 1747700.86 | 14564986.27 | 40°06'15.887"N | 104°36'58.779"W | 1.28 | |
| 10578.00 | 90.860 | 179.160 | 7005.88 | 4212.02 | -4210.23 | 282.04 | 1747702.25 | 14564898.32 | 40°06'15.018"N | 104°36'58.765"W | 0.44 | |
| 10666.00 | 89.780 | 178.280 | 7005.39 | 4300.00 | -4298.21 | 284.00 | 1747704.60 | 14564810.39 | 40°06'14.149"N | 104°36'58.740"W | 1.58 | |
| 10753.00 | 90.090 | 179.350 | 7005.49 | 4386.99 | -4385.19 | 285.80 | 1747706.77 | 14564723.45 | 40°06'13.289"N | 104°36'58.717"W | 1.28 | |
| 10841.00 | 89.140 | 178.460 | 7006.08 | 4474.98 | -4473.17 | 287.48 | 1747708.83 | 14564635.52 | 40°06'12.420"N | 104°36'58.695"W | 1.48 | |
| 10928.00 | 91.230 | 179.610 | 7005.80 | 4561.97 | -4560.15 | 288.95 | 1747710.67 | 14564548.58 | 40°06'11.560"N | 104°36'58.676"W | 2.74 | |
| 11016.00 | 91.350 | 179.700 | 7003.82 | 4649.95 | -4648.12 | 289.48 | 1747711.58 | 14564460.64 | 40°06'10.691"N | 104°36'58.670"W | 0.17 | |
| 11103.00 | 91.140 | 179.910 | 7001.93 | 4736.93 | -4735.10 | 289.77 | 1747712.25 | 14564373.69 | 40°06'09.831"N | 104°36'58.666"W | 0.34 | |
| 11191.00 | 91.050 | 179.230 | 7000.25 | 4824.91 | -4823.08 | 290.43 | 1747713.29 | 14564285.75 | 40°06'08.962"N | 104°36'58.657"W | 0.78 | |
| 11281.00 | 91.230 | 180.170 | 6998.46 | 4914.89 | -4913.06 | 290.91 | 1747714.14 | 14564195.81 | 40°06'08.072"N | 104°36'58.651"W | 1.06 | |
| 11372.00 | 89.810 | 178.610 | 6997.63 | 5005.88 | -5004.05 | 291.87 | 1747715.50 | 14564104.86 | 40°06'07.173"N | 104°36'58.639"W | 2.32 | |
| 11463.00 | 90.370 | 179.570 | 6997.49 | 5096.88 | -5095.04 | 293.32 | 1747717.34 | 14564013.92 | 40°06'06.274"N | 104°36'58.620"W | 1.22 | |
| 11554.00 | 90.310 | 180.540 | 6996.95 | 5187.87 | -5186.03 | 293.23 | 1747717.64 | 14563922.96 | 40°06'05.375"N | 104°36'58.621"W | 1.07 | |
| 11645.00 | 90.400 | 180.710 | 6996.38 | 5278.86 | -5277.03 | 292.24 | 1747717.04 | 14563832.00 | 40°06'04.476"N | 104°36'58.634"W | 0.21 | |
| 11732.00 | 90.950 | 181.420 | 6995.36 | 5365.82 | -5364.00 | 290.62 | 1747715.80 | 14563745.05 | 40°06'03.616"N | 104°36'58.655"W | 1.03 | |
| 11820.00 | 90.710 | 180.300 | 6994.08 | 5453.79 | -5451.98 | 289.30 | 1747714.86 | 14563657.10 | 40°06'02.747"N | 104°36'58.672"W | 1.30 | |
| 11907.00 | 90.710 | 180.260 | 6993.01 | 5540.78 | -5538.97 | 288.88 | 1747714.81 | 14563570.14 | 40°06'01.887"N | 104°36'58.678"W | 0.05 | |
| 11995.00 | 91.540 | 179.280 | 6991.28 | 5628.76 | -5626.96 | 289.23 | 1747715.54 | 14563482.19 | 40°06'01.018"N | 104°36'58.673"W | 1.46 | |
| 12082.00 | 92.220 | 179.270 | 6988.42 | 5715.71 | -5713.90 | 290.33 | 1747717.01 | 14563395.29 | 40°06'00.158"N | 104°36'58.659"W | 0.78 | |
| 12170.00 | 90.370 | 179.110 | 6986.44 | 5803.68 | -5801.87 | 291.57 | 1747718.64 | 14563307.36 | 40°05'59.289"N | 104°36'58.643"W | 2.11 | |
| 12257.00 | 89.910 | 178.450 | 6986.22 | 5890.67 | -5888.85 | 293.43 | 1747720.86 | 14563220.43 | 40°05'58.430"N | 104°36'58.619"W | 0.92 | |
| 12345.00 | 89.350 | 177.820 | 6986.79 | 5978.64 | -5976.80 | 296.29 | 1747724.10 | 14563132.52 | 40°05'57.560"N | 104°36'58.582"W | 0.96 | |
| 12432.00 | 90.680 | 180.070 | 6986.77 | 6065.62 | -6063.77 | 297.89 | 1747726.08 | 14563045.59 | 40°05'56.701"N | 104°36'58.562"W | 3.00 | |
| 12520.00 | 91.510 | 179.940 | 6985.09 | 6153.61 | -6151.76 | 297.88 | 1747726.45 | 14562957.64 | 40°05'55.831"N | 104°36'58.562"W | 0.95 | |
| 12607.00 | 91.230 | 179.700 | 6983.01 | 6240.58 | -6238.73 | 298.16 | 1747727.10 | 14562870.70 | 40°05'54.972"N | 104°36'58.558"W | 0.42 | |

| REFERENCE WELLPATH IDENTIFICATION | | | |
|-----------------------------------|--------------------------------------|----------|---|
| Operator | KERR-MCGEE OIL & GAS ONSHORE LP (WA) | Slot | SLOT#29 ZELDA 25-6HZ(373'FNL & 1234'FWL,SEC.25) |
| Area | COLORADO | Well | ZELDA 25-6HZ |
| Field | WELD COUNTY (UTM/TRUE NORTH) | Wellbore | ZELDA 25-6HZ AWB |
| Facility | SEC.25-T2N-R65W | | |

| WELLPATH DATA (231 stations) † = interpolated/extrapolated station | | | | | | | | | | | | |
|--|-----------------|-------------|----------|----------------|------------|-----------|-------------------|--------------------|----------------|-----------------|---------------|--|
| MD [ft] | Inclination [°] | Azimuth [°] | TVD [ft] | Vert Sect [ft] | North [ft] | East [ft] | Grid East [US ft] | Grid North [US ft] | Latitude | Longitude | DLS ["/100ft] | Comments |
| 12695.00 | 91.080 | 179.170 | 6981.23 | 6328.56 | -6326.71 | 299.03 | 1747728.34 | 14562782.76 | 40°05'54.103"N | 104°36'58.547"W | 0.63 | |
| 12782.00 | 90.770 | 178.860 | 6979.83 | 6415.55 | -6413.68 | 300.52 | 1747730.21 | 14562695.83 | 40°05'53.243"N | 104°36'58.528"W | 0.50 | |
| 12870.00 | 91.410 | 178.570 | 6978.15 | 6503.52 | -6501.65 | 302.49 | 1747732.56 | 14562607.91 | 40°05'52.374"N | 104°36'58.502"W | 0.80 | |
| 12957.00 | 90.990 | 178.130 | 6976.33 | 6590.48 | -6588.59 | 305.00 | 1747735.44 | 14562521.01 | 40°05'51.515"N | 104°36'58.470"W | 0.70 | |
| 13045.00 | 91.910 | 179.470 | 6974.11 | 6678.44 | -6676.54 | 306.84 | 1747737.66 | 14562433.10 | 40°05'50.645"N | 104°36'58.447"W | 1.85 | |
| 13132.00 | 92.680 | 179.020 | 6970.62 | 6765.36 | -6763.46 | 307.99 | 1747739.18 | 14562346.22 | 40°05'49.787"N | 104°36'58.432"W | 1.02 | |
| 13220.00 | 91.910 | 179.990 | 6967.10 | 6853.29 | -6851.39 | 308.75 | 1747740.31 | 14562258.33 | 40°05'48.918"N | 104°36'58.422"W | 1.41 | |
| 13307.00 | 91.200 | 181.280 | 6964.74 | 6940.24 | -6938.35 | 307.78 | 1747739.73 | 14562171.40 | 40°05'48.058"N | 104°36'58.434"W | 1.69 | |
| 13395.00 | 91.390 | 181.320 | 6962.75 | 7028.18 | -7026.30 | 305.79 | 1747738.11 | 14562083.48 | 40°05'47.189"N | 104°36'58.460"W | 0.22 | |
| 13482.00 | 91.140 | 180.600 | 6960.83 | 7115.14 | -7113.27 | 304.33 | 1747737.03 | 14561996.54 | 40°05'46.330"N | 104°36'58.479"W | 0.88 | |
| 13569.00 | 91.420 | 180.710 | 6958.88 | 7202.10 | -7200.24 | 303.33 | 1747736.41 | 14561909.60 | 40°05'45.470"N | 104°36'58.492"W | 0.35 | |
| 13657.00 | 91.450 | 180.420 | 6956.68 | 7290.06 | -7288.21 | 302.47 | 1747735.92 | 14561821.66 | 40°05'44.601"N | 104°36'58.503"W | 0.33 | |
| 13745.00 | 92.090 | 180.020 | 6953.96 | 7378.01 | -7376.16 | 302.13 | 1747735.96 | 14561733.74 | 40°05'43.732"N | 104°36'58.507"W | 0.86 | |
| 13832.00 | 90.180 | 179.270 | 6952.24 | 7464.99 | -7463.14 | 302.67 | 1747736.87 | 14561646.80 | 40°05'42.872"N | 104°36'58.500"W | 2.36 | |
| 13920.00 | 89.570 | 179.270 | 6952.43 | 7552.99 | -7551.13 | 303.79 | 1747738.37 | 14561558.84 | 40°05'42.003"N | 104°36'58.486"W | 0.69 | |
| 14007.00 | 90.370 | 180.020 | 6952.48 | 7639.99 | -7638.13 | 304.33 | 1747739.28 | 14561471.88 | 40°05'41.143"N | 104°36'58.479"W | 1.26 | |
| 14095.00 | 89.880 | 179.480 | 6952.28 | 7727.99 | -7726.13 | 304.71 | 1747740.05 | 14561383.92 | 40°05'40.273"N | 104°36'58.474"W | 0.83 | |
| 14182.00 | 89.690 | 179.110 | 6952.61 | 7814.99 | -7813.12 | 305.78 | 1747741.49 | 14561296.97 | 40°05'39.414"N | 104°36'58.460"W | 0.48 | |
| 14270.00 | 89.510 | 180.200 | 6953.22 | 7902.98 | -7901.12 | 306.31 | 1747742.40 | 14561209.01 | 40°05'38.544"N | 104°36'58.453"W | 1.26 | |
| 14357.00 | 90.890 | 181.030 | 6952.92 | 7989.97 | -7988.11 | 305.38 | 1747741.84 | 14561122.05 | 40°05'37.684"N | 104°36'58.466"W | 1.85 | |
| 14445.00 | 91.320 | 180.530 | 6951.22 | 8077.93 | -8076.08 | 304.18 | 1747741.02 | 14561034.11 | 40°05'36.815"N | 104°36'58.481"W | 0.75 | |
| 14533.00 | 91.290 | 179.870 | 6949.22 | 8165.90 | -8164.06 | 303.87 | 1747741.09 | 14560946.16 | 40°05'35.946"N | 104°36'58.485"W | 0.75 | |
| 14620.00 | 91.660 | 179.530 | 6946.98 | 8252.87 | -8251.03 | 304.33 | 1747741.92 | 14560859.23 | 40°05'35.086"N | 104°36'58.479"W | 0.58 | |
| 14708.00 | 89.110 | 178.630 | 6946.39 | 8340.86 | -8339.01 | 305.74 | 1747743.71 | 14560771.29 | 40°05'34.217"N | 104°36'58.461"W | 3.07 | |
| 14795.00 | 89.050 | 177.850 | 6947.79 | 8427.82 | -8425.95 | 308.41 | 1747746.76 | 14560684.39 | 40°05'33.357"N | 104°36'58.427"W | 0.90 | |
| 14883.00 | 88.890 | 177.110 | 6949.37 | 8515.75 | -8513.85 | 312.28 | 1747751.00 | 14560596.54 | 40°05'32.489"N | 104°36'58.377"W | 0.86 | |
| 14970.00 | 89.110 | 179.750 | 6950.89 | 8602.71 | -8600.80 | 314.67 | 1747753.76 | 14560509.64 | 40°05'31.630"N | 104°36'58.346"W | 3.04 | |
| 15058.00 | 90.580 | 180.900 | 6951.12 | 8690.70 | -8688.79 | 314.17 | 1747753.64 | 14560421.68 | 40°05'30.760"N | 104°36'58.353"W | 2.12 | |
| 15145.00 | 91.200 | 181.800 | 6949.77 | 8777.64 | -8775.76 | 312.12 | 1747751.96 | 14560334.74 | 40°05'29.901"N | 104°36'58.379"W | 1.26 | |
| 15233.00 | 91.600 | 182.310 | 6947.62 | 8865.54 | -8863.68 | 308.96 | 1747749.19 | 14560246.85 | 40°05'29.032"N | 104°36'58.420"W | 0.74 | |
| 15320.00 | 89.880 | 181.690 | 6946.50 | 8952.45 | -8950.61 | 305.93 | 1747746.53 | 14560159.93 | 40°05'28.173"N | 104°36'58.459"W | 2.10 | |
| 15408.00 | 88.950 | 181.530 | 6947.40 | 9040.39 | -9038.57 | 303.45 | 1747744.43 | 14560072.00 | 40°05'27.304"N | 104°36'58.490"W | 1.07 | |
| 15495.00 | 88.030 | 180.480 | 6949.69 | 9127.34 | -9125.53 | 301.93 | 1747743.28 | 14559985.07 | 40°05'26.444"N | 104°36'58.510"W | 1.60 | |
| 15582.00 | 89.450 | 180.290 | 6951.60 | 9214.30 | -9212.50 | 301.34 | 1747743.07 | 14559898.13 | 40°05'25.585"N | 104°36'58.518"W | 1.65 | |
| 15670.00 | 88.920 | 179.890 | 6952.86 | 9302.29 | -9300.49 | 301.21 | 1747743.31 | 14559810.17 | 40°05'24.715"N | 104°36'58.519"W | 0.75 | |
| 15757.00 | 89.850 | 179.740 | 6953.79 | 9389.29 | -9387.48 | 301.49 | 1747743.97 | 14559723.21 | 40°05'23.855"N | 104°36'58.516"W | 1.08 | |
| 15845.00 | 89.600 | 179.060 | 6954.21 | 9477.28 | -9475.48 | 302.41 | 1747745.27 | 14559635.26 | 40°05'22.986"N | 104°36'58.504"W | 0.82 | |
| 16020.00 | 90.590 | 178.810 | 6953.92 | 9552.27 | -9550.45 | 305.66 | 1747749.27 | 14559460.38 | 40°05'21.257"N | 104°36'58.462"W | 0.58 | |
| 16107.00 | 90.310 | 177.610 | 6953.24 | 9739.24 | -9737.40 | 308.38 | 1747752.36 | 14559373.47 | 40°05'20.398"N | 104°36'58.427"W | 1.42 | |
| 16194.00 | 89.780 | 177.070 | 6953.17 | 9826.17 | -9824.30 | 312.42 | 1747756.77 | 14559286.62 | 40°05'19.539"N | 104°36'58.375"W | 0.87 | |
| 16223.00† | 89.862 | 177.518 | 6953.26 | 9855.14 | -9853.27 | 313.78 | 1747758.27 | 14559257.67 | 40°05'19.253"N | 104°36'58.358"W | 1.57 | ENTER RADIUS TOE (433'FSL & 1472'FWL,SEC.36) 40.0886813 -104.6162104 |
| 16282.00 | 90.030 | 178.430 | 6953.32 | 9914.12 | -9912.23 | 315.87 | 1747760.60 | 14559198.74 | 40°05'18.670"N | 104°36'58.331"W | 1.57 | |
| 16369.00 | 89.480 | 177.740 | 6953.69 | 10001.09 | -9999.18 | 318.78 | 1747763.88 | 14559111.83 | 40°05'17.811"N | 104°36'58.293"W | 1.01 | |
| 16457.00 | 90.280 | 177.770 | 6953.87 | 10089.04 | -10087.12 | 322.22 | 1747767.71 | 14559023.95 | 40°05'16.942"N | 104°36'58.249"W | 0.91 | |
| 16544.00 | 89.880 | 176.710 | 6953.75 | 10175.96 | -10174.01 | 326.41 | 1747772.27 | 14558937.11 | 40°05'16.083"N | 104°36'58.195"W | 1.30 | |

| REFERENCE WELLPATH IDENTIFICATION | | | | |
|-----------------------------------|--------------------------------------|--|----------|---|
| Operator | KERR-MCGEE OIL & GAS ONSHORE LP (WA) | | Slot | SLOT#29 ZELDA 25-6HZ(373'FNL & 1234'FWL,SEC.25) |
| Area | COLORADO | | Well | ZELDA 25-6HZ |
| Field | WELD COUNTY (UTM/TRUE NORTH) | | Wellbore | ZELDA 25-6HZ AWB |
| Facility | SEC.25-T2N-R65W | | | |

| WELLPATH DATA (231 stations) | | | | | | | | | | | | |
|------------------------------|-----------------|-------------|----------|----------------|------------|-----------|-------------------|--------------------|----------------|-----------------|---------------|---|
| MD [ft] | Inclination [°] | Azimuth [°] | TVD [ft] | Vert Sect [ft] | North [ft] | East [ft] | Grid East [US ft] | Grid North [US ft] | Latitude | Longitude | DLS [°/100ft] | Comments |
| 16632.00 | 89.450 | 178.860 | 6954.27 | 10263.91 | -10261.94 | 329.82 | 1747776.05 | 14558849.23 | 40°05'15.214"N | 104°36'58.151"W | 2.49 | |
| 16720.00 | 89.230 | 178.630 | 6955.28 | 10351.89 | -10349.91 | 331.74 | 1747778.35 | 14558761.30 | 40°05'14.345"N | 104°36'58.127"W | 0.36 | |
| 16807.00 | 89.010 | 179.270 | 6956.62 | 10438.88 | -10436.89 | 333.34 | 1747780.32 | 14558674.37 | 40°05'13.485"N | 104°36'58.106"W | 0.78 | |
| 16895.00 | 87.260 | 177.830 | 6959.48 | 10526.81 | -10524.81 | 335.56 | 1747782.92 | 14558586.49 | 40°05'12.616"N | 104°36'58.078"W | 2.57 | |
| 16949.00 | 86.830 | 177.630 | 6962.26 | 10580.71 | -10578.69 | 337.70 | 1747785.29 | 14558532.64 | 40°05'12.084"N | 104°36'58.050"W | 0.88 | LAST BHGE MWD+IFR1+MSA SURVEY |
| 16995.00 | 86.830 | 177.630 | 6964.81 | 10626.61 | -10624.58 | 339.60 | 1747787.38 | 14558486.77 | 40°05'11.630"N | 104°36'58.026"W | 0.00 | PTB (339'FNL & 1499'FWL,SEC.01) 40.0865640 -104.6161182 |

| HOLE & CASING SECTIONS - Ref Wellbore: ZELDA 25-6HZ AWB Ref Wellpath: ZELDA 25-6HZ AWP | | | | | | | | | |
|--|---------------|-------------|---------------|----------------|--------------|----------------|----------------|--------------|--------------|
| String/Diameter | Start MD [ft] | End MD [ft] | Interval [ft] | Start TVD [ft] | End TVD [ft] | Start N/S [ft] | Start E/W [ft] | End N/S [ft] | End E/W [ft] |
| 9.625in Casing Surface | 17.00 | 1836.00 | 1819.00 | 17.00 | 1813.43 | 0.00 | 0.00 | -126.13 | 145.31 |

| TARGETS | | | | | | | | |
|---|----------|------------|-----------|-------------------|--------------------|----------------|-----------------|---------|
| Name | TVD [ft] | North [ft] | East [ft] | Grid East [US ft] | Grid North [US ft] | Latitude | Longitude | Shape |
| SEC.36-T2N-R65W | 2.00 | -1892.43 | 2018.66 | 1749428.22 | 14567222.67 | 40°06'37.922"N | 104°36'36.414"W | polygon |
| SEC.25-T2N-R65W | 22.00 | 8025.43 | 692.39 | 1748059.81 | 14577130.87 | 40°08'15.932"N | 104°36'53.480"W | polygon |
| ZELDA 25-6HZ HEEL REV-1(1230'FNL & 1491'FWL,SEC.25) | 6924.00 | -858.24 | 263.18 | 1747668.99 | 14568248.90 | 40°06'48.143"N | 104°36'59.008"W | point |
| ZELDA 25-6HZ HEEL REV-2(1350'FNL & 1491'FWL,SEC.25) | 6924.00 | -978.24 | 263.18 | 1747669.50 | 14568128.95 | 40°06'46.957"N | 104°36'59.008"W | point |
| ZELDA 25-6HZ BHL REV-1(331'FNL & 1486'FWL,SEC.01) | 6946.00 | -10617.28 | 327.35 | 1747775.11 | 14558494.01 | 40°05'11.702"N | 104°36'58.183"W | point |
| ZELDA 25-6HZ INT. TARGET@7900'VS | 6946.00 | -7898.11 | 309.22 | 1747745.29 | 14561212.03 | 40°05'38.574"N | 104°36'58.416"W | point |
| ZELDA 25-6HZ LANDBOX | 6946.00 | 0.00 | 0.00 | 1747402.22 | 14569105.66 | 40°06'56.624"N | 104°37'02.395"W | polygon |
| ZELDA 25-6HZ RADIUS 1 | 6946.00 | -968.45 | 93.85 | 1747500.20 | 14568138.00 | 40°06'47.054"N | 104°37'01.187"W | polygon |
| ZELDA 25-6HZ RADIUS 2 | 6946.00 | -10285.24 | 158.50 | 1747604.90 | 14558825.20 | 40°05'14.984"N | 104°37'00.356"W | polygon |
| ZELDA 25-6HZ INT. TARGET@3900'VS | 6995.00 | -3898.20 | 282.59 | 1747701.47 | 14565210.23 | 40°06'18.101"N | 104°36'58.758"W | point |

| REFERENCE WELLPATH IDENTIFICATION | | | |
|-----------------------------------|--------------------------------------|----------|---|
| Operator | KERR-MCGEE OIL & GAS ONSHORE LP (WA) | Slot | SLOT#29 ZELDA 25-6HZ(373'FNL & 1234'FWL,SEC.25) |
| Area | COLORADO | Well | ZELDA 25-6HZ |
| Field | WELD COUNTY (UTM/TRUE NORTH) | Wellbore | ZELDA 25-6HZ AWB |
| Facility | SEC.25-T2N-R65W | | |

| WELLPATH COMPOSITION - Ref Wellbore: ZELDA 25-6HZ AWB Ref Wellpath: ZELDA 25-6HZ AWP | | | | |
|--|-------------|--|--|------------------|
| Start MD [ft] | End MD [ft] | Positional Uncertainty Model | Log Name/Comment | Wellbore |
| 17.00 | 1796.00 | Custom APC_ISCWSA REV 2 MWD+IFR1 (approximation) | Custom APC_ISCWSA Rev-2 MWD+IFR1 <126 - 1796> | ZELDA 25-6HZ AWB |
| 1796.00 | 16949.00 | Custom APC_ISCWSA REV 2 MWD+IFR1+MSA (approximation) | BHGE Custom APC_ISCWSA Rev-2 MWD+IFR1+MSA <1889 - 16949> | ZELDA 25-6HZ AWB |
| 16949.00 | 16995.00 | Blind Drilling (std) | Projection to bit | ZELDA 25-6HZ AWB |

| REFERENCE WELLPATH IDENTIFICATION | | | |
|-----------------------------------|--------------------------------------|----------|---|
| Operator | KERR-MCGEE OIL & GAS ONSHORE LP (WA) | Slot | SLOT#29 ZELDA 25-6HZ(373'FNL & 1234'FWL,SEC.25) |
| Area | COLORADO | Well | ZELDA 25-6HZ |
| Field | WELD COUNTY (UTM/TRUE NORTH) | Wellbore | ZELDA 25-6HZ AWB |
| Facility | SEC.25-T2N-R65W | | |

| WELLPATH COMMENTS | | | | |
|-------------------|-----------------|-------------|----------|---|
| MD [ft] | Inclination [°] | Azimuth [°] | TVD [ft] | Comment |
| 126.00 | 0.400 | 287.420 | 126.00 | FIRST SURFACE MWD+IFR1 SURVEY |
| 1635.00 | 16.873 | 133.336 | 1621.88 | ENTER LANDBOX (459'FNL & 1331'FWL,SEC.25) 40.1154933 -104.6169754 |
| 1796.00 | 18.060 | 129.050 | 1775.37 | LAST SURFACE MWD+IFR1 SURVEY |
| 1889.00 | 17.250 | 128.210 | 1863.99 | FIRST BHGE MWD+IFR1+MSA SURVEY |
| 6201.00 | 1.690 | 174.040 | 6156.13 | KOP |
| 7382.00 | 89.200 | 178.490 | 6925.52 | LANDING (1389'FNL & 1494'FWL,SEC.25) 40.1129391 -104.6164037 |
| 7759.00 | 87.868 | 178.394 | 6937.82 | EXIT RADIUS HEEL (1766'FNL & 1506'FWL,SEC.25) 40.1119054 -104.6163562 |
| 16223.00 | 89.862 | 177.518 | 6953.26 | ENTER RADIUS TOE (433'FSL & 1472'FWL,SEC.36) 40.0886813 -104.6162104 |
| 16949.00 | 86.830 | 177.630 | 6962.26 | LAST BHGE MWD+IFR1+MSA SURVEY |
| 16995.00 | 86.830 | 177.630 | 6964.81 | PTB (339'FNL & 1499'FWL,SEC.01) 40.0865640 -104.6161182 |