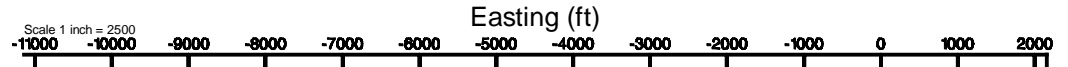


# KERR-MCGEE OIL & GAS ONSHORE LP (WA)

Location: COLORADO Slot: SLOT#27 ZELDA 25-4HZ(373'FNL & 1204'FWL,SEC.25)  
 Field: WELD COUNTY (UTM/TRUE NORTH) Well: ZELDA 25-4HZ  
 Facility: SEC.25-T2N-R65W Wellbore: ZELDA 25-4HZ PWB

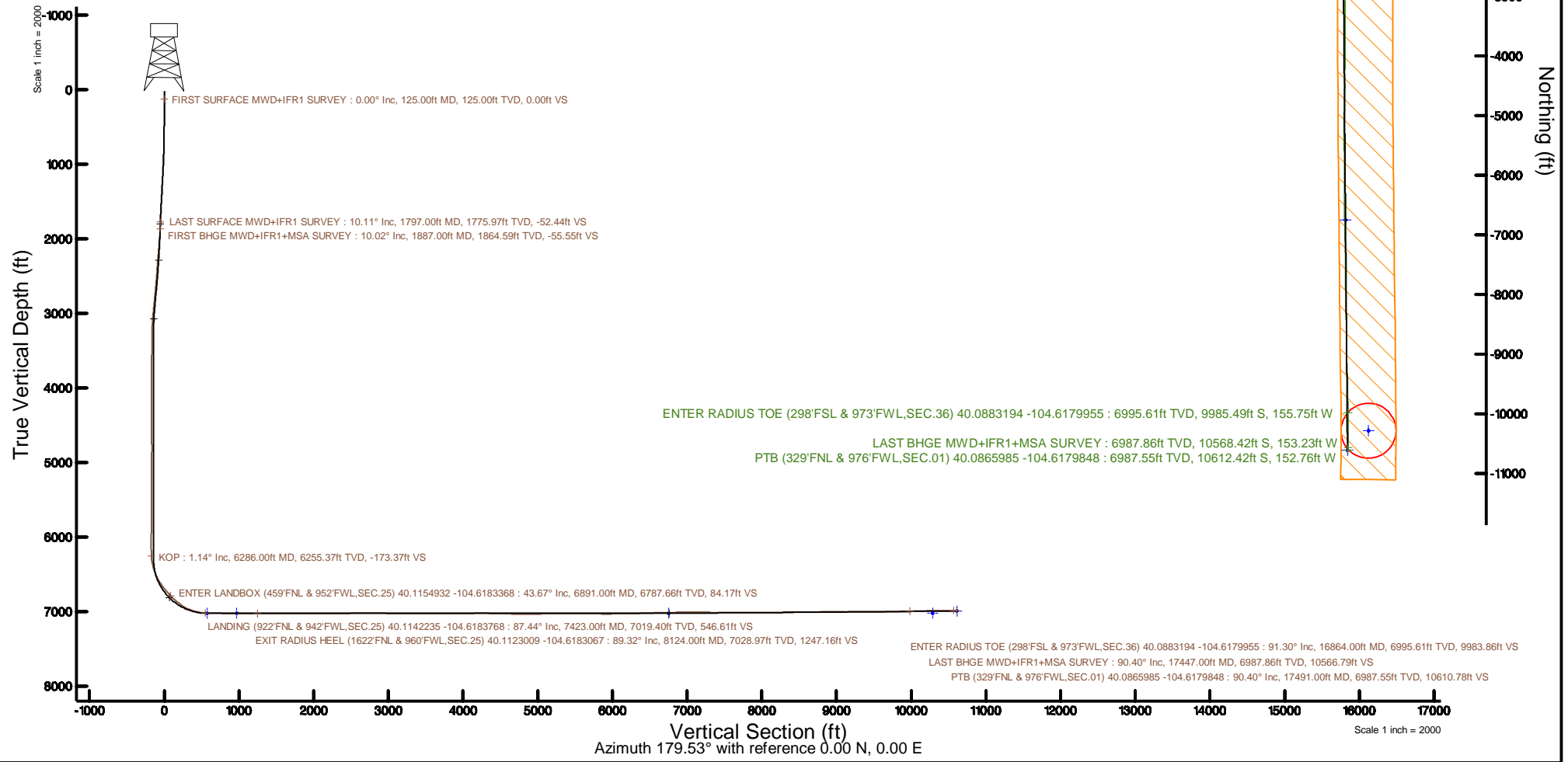


Plot reference wellpath is ZELDA 25-4HZ PWP Rev-A.0	Grid System: NAD83 / UTM Zone 13 North, US feet
True vertical depths are referenced to Xtreme 22 (17) (RT)	* = Wellpath was transformed from a different geodetic datum
Measured depths are referenced to Xtreme 22 (17) (RT)	North Reference: True north
Xtreme 22 (17) (RT) to Mean Sea Level: 4920 feet	Scale: True distance
Mean Sea Level to Mud line (At Slot: SLOT#27 ZELDA 25-4HZ(373'FNL & 1204'FWL,SEC.25)): 0 feet	Depths are in feet
Coordinates are in feet referenced to Slot	Created by: painsetr on 2018-08-28
	Database: WA_DEN Anadarko_Defn



## SLOT#27 ZELDA 25-4HZ(373'FNL & 1204'FWL,SEC.25)

KOP : 6255.37ft TVD, 171.28ft N, 252.74ft W  
 FIRST BHGE MWD+IFR1+MSA SURVEY : 1864.59ft TVD, 53.67ft N, 226.84ft W  
 LAST SURFACE MWD+IFR1 SURVEY : 1775.97ft TVD, 50.69ft N, 211.40ft W  
 FIRST SURFACE MWD+IFR1 SURVEY : 125.00ft TVD, 0.00ft N, 0.00ft E  
 ENTER LANDBOX (459'FNL & 952'FWL,SEC.25) 40.1154932 -104.6183368 : 6787.66ft TVD, 86.25ft S, 251.15ft W  
 LANDING (922'FNL & 942'FWL,SEC.25) 40.1142235 -104.6183768 : 7019.40ft TVD, 548.80ft S, 262.33ft W  
 EXIT RADIUS HEEL (1622'FNL & 960'FWL,SEC.25) 40.1123009 -104.6183067 : 7028.97ft TVD, 1249.22ft S, 242.73ft W



REFERENCE WELLPATH IDENTIFICATION			
Operator	KERR-MCGEE OIL & GAS ONSHORE LP (WA)	Slot	SLOT#27 ZELDA 25-4HZ(373'FNL & 1204'FWL,SEC.25)
Area	COLORADO	Well	ZELDA 25-4HZ
Field	WELD COUNTY (UTM/TRUE NORTH)	Wellbore	ZELDA 25-4HZ AWB
Facility	SEC.25-T2N-R65W		

REPORT SETUP INFORMATION			
Projection System	NAD83 / UTM Zone 13 North, US feet	Software System	WellArchitect® 5.0
North Reference	True	User	Painsetr
Scale	0.999613	Report Generated	8/28/2018 at 10:17 AM
Convergence at slot	0.25° East	Database/Source file	WA_DEN_Anadarko_Defn/ZELDA_25-4HZ_AWP.xml

WELLPATH LOCATION						
	Local coordinates		Grid coordinates		Geographic coordinates	
	North[ft]	East[ft]	Easting[US ft]	Northing[US ft]	Latitude	Longitude
Slot Location	84.05	-3635.66	1747372.32	14569105.94	40°06'56.628"N	104°37'02.780"W
Facility Reference Pt			1751006.90	14569038.09	40°06'55.800"N	104°36'15.984"W
Field Reference Pt			1698235.31	14552047.82	40°04'09.600"N	104°47'36.000"W

WELLPATH DATUM			
Calculation method	Minimum curvature	Xtreme 22 (17') (RT) to Facility Vertical Datum	4920.00ft
Horizontal Reference Pt	Slot	Xtreme 22 (17') (RT) to Mean Sea Level	4920.00ft
Vertical Reference Pt	Xtreme 22 (17') (RT)	Xtreme 22 (17') (RT) to Mud Line at Slot (SLOT#27 ZELDA 25-4HZ(373'FNL & 1204'FWL,SEC.25))	4920.00ft
MD Reference Pt	Xtreme 22 (17') (RT)	Section Origin	N 0.00, E 0.00 ft
Field Vertical Reference	Mean Sea Level	Section Azimuth	179.53°

REFERENCE WELLPATH IDENTIFICATION			
Operator	KERR-MCGEE OIL & GAS ONSHORE LP (WA)	Slot	SLOT#27 ZELDA 25-4HZ(373'FNL & 1204'FWL,SEC.25)
Area	COLORADO	Well	ZELDA 25-4HZ
Field	WELD COUNTY (UTM/TRUE NORTH)	Wellbore	ZELDA 25-4HZ AWB
Facility	SEC.25-T2N-R65W		

WELLPATH DATA (238 stations) † = interpolated/extrapolated station												
MD (ft)	Inclination [°]	Azimuth [°]	TVD (ft)	Vert Sect (ft)	North (ft)	East (ft)	Grid East [US ft]	Grid North [US ft]	Latitude	Longitude	DLS [°/100ft]	Comments
0.00	0.00	35.260	0.00	0.00	0.00	0.00	1747372.32	14569105.94	40°06'56.628"N	104°37'02.780"W	0.00	
17.00	0.000	35.260	17.00	0.00	0.00	0.00	1747372.32	14569105.94	40°06'56.628"N	104°37'02.780"W	0.00	
125.00	0.000	98.020	125.00	0.00	0.00	0.00	1747372.32	14569105.94	40°06'56.628"N	104°37'02.780"W	0.00	FIRST SURFACE MWD+IFR1 SURVEY
157.00	0.180	35.260	157.00	-0.04	0.04	0.03	1747372.35	14569105.98	40°06'56.628"N	104°37'02.780"W	0.56	
189.00	0.220	32.100	189.00	-0.13	0.13	0.09	1747372.41	14569106.07	40°06'56.629"N	104°37'02.779"W	0.13	
221.00	0.220	51.530	221.00	-0.22	0.22	0.17	1747372.49	14569106.16	40°06'56.630"N	104°37'02.778"W	0.23	
252.00	0.260	28.230	252.00	-0.32	0.32	0.25	1747372.57	14569106.26	40°06'56.631"N	104°37'02.777"W	0.34	
284.00	0.180	345.960	284.00	-0.43	0.44	0.27	1747372.59	14569106.38	40°06'56.632"N	104°37'02.776"W	0.55	
315.00	0.130	302.980	315.00	-0.50	0.50	0.23	1747372.55	14569106.44	40°06'56.633"N	104°37'02.777"W	0.40	
347.00	0.090	278.020	347.00	-0.52	0.53	0.18	1747372.49	14569106.47	40°06'56.633"N	104°37'02.778"W	0.19	
379.00	0.180	289.500	379.00	-0.54	0.54	0.10	1747372.42	14569106.48	40°06'56.633"N	104°37'02.779"W	0.29	
411.00	0.530	299.550	411.00	-0.63	0.63	-0.07	1747372.24	14569106.57	40°06'56.634"N	104°37'02.781"W	1.11	
442.00	1.100	290.590	441.99	-0.81	0.81	-0.48	1747371.84	14569106.75	40°06'56.636"N	104°37'02.786"W	1.88	
474.00	1.320	294.190	473.99	-1.08	1.07	-1.10	1747371.21	14569107.00	40°06'56.639"N	104°37'02.794"W	0.73	
505.00	1.410	298.230	504.98	-1.41	1.39	-1.76	1747370.55	14569107.33	40°06'56.642"N	104°37'02.803"W	0.42	
537.00	1.670	294.720	536.97	-1.80	1.78	-2.53	1747369.78	14569107.70	40°06'56.646"N	104°37'02.813"W	0.86	
569.00	2.150	282.770	568.95	-2.13	2.10	-3.54	1747368.77	14569108.03	40°06'56.649"N	104°37'02.826"W	1.94	
600.00	2.900	281.890	599.92	-2.43	2.39	-4.88	1747367.43	14569108.31	40°06'56.652"N	104°37'02.843"W	2.42	
632.00	3.340	284.350	631.87	-2.85	2.79	-6.57	1747365.74	14569108.70	40°06'56.656"N	104°37'02.865"W	1.44	
664.00	3.820	284.790	663.81	-3.36	3.29	-8.50	1747363.80	14569109.20	40°06'56.661"N	104°37'02.889"W	1.50	
696.00	3.870	284.610	695.74	-3.93	3.84	-10.58	1747361.73	14569109.73	40°06'56.666"N	104°37'02.916"W	0.16	
728.00	4.660	283.380	727.65	-4.52	4.41	-12.89	1747359.41	14569110.29	40°06'56.672"N	104°37'02.946"W	2.49	
759.00	5.010	283.380	758.54	-5.14	5.02	-15.43	1747356.87	14569110.89	40°06'56.678"N	104°37'02.979"W	1.13	
791.00	5.360	283.910	790.41	-5.85	5.70	-18.24	1747354.06	14569111.56	40°06'56.684"N	104°37'03.015"W	1.10	
823.00	5.980	284.520	822.25	-6.65	6.48	-21.31	1747350.99	14569112.32	40°06'56.692"N	104°37'03.054"W	1.95	
854.00	6.990	284.960	853.05	-7.57	7.37	-24.69	1747347.60	14569113.20	40°06'56.701"N	104°37'03.098"W	3.26	
886.00	7.820	285.750	884.78	-8.70	8.46	-28.67	1747343.62	14569114.28	40°06'56.712"N	104°37'03.149"W	2.61	
918.00	8.530	286.110	916.46	-9.99	9.71	-33.04	1747339.25	14569115.51	40°06'56.724"N	104°37'03.205"W	2.22	
949.00	9.140	284.790	947.09	-11.29	10.98	-37.63	1747334.65	14569116.75	40°06'56.736"N	104°37'03.264"W	2.07	
980.00	9.890	282.590	977.66	-12.54	12.19	-42.61	1747329.67	14569117.94	40°06'56.748"N	104°37'03.328"W	2.69	
1012.00	10.020	282.680	1009.18	-13.79	13.40	-48.01	1747324.27	14569119.12	40°06'56.760"N	104°37'03.398"W	0.41	
1044.00	10.240	283.730	1040.68	-15.13	14.68	-53.49	1747318.79	14569120.39	40°06'56.773"N	104°37'03.468"W	0.90	
1076.00	10.940	283.120	1072.14	-16.54	16.05	-59.21	1747313.06	14569121.73	40°06'56.787"N	104°37'03.542"W	2.22	
1108.00	11.600	283.030	1103.52	-18.00	17.46	-65.30	1747306.97	14569123.11	40°06'56.801"N	104°37'03.621"W	2.06	
1139.00	12.660	283.470	1133.83	-19.55	18.96	-71.64	1747300.62	14569124.58	40°06'56.815"N	104°37'03.702"W	3.43	
1171.00	13.050	283.380	1165.03	-21.26	20.61	-78.57	1747293.69	14569126.20	40°06'56.832"N	104°37'03.791"W	1.22	
1203.00	13.050	283.380	1196.20	-22.99	22.28	-85.60	1747286.66	14569127.84	40°06'56.848"N	104°37'03.882"W	0.00	
1234.00	13.100	282.850	1226.40	-24.64	23.87	-92.43	1747279.83	14569129.41	40°06'56.864"N	104°37'03.970"W	0.42	
1266.00	13.180	282.410	1257.56	-26.29	25.46	-99.52	1747272.72	14569130.96	40°06'56.880"N	104°37'04.061"W	0.40	
1298.00	13.360	281.360	1288.70	-27.86	26.98	-106.71	1747265.53	14569132.45	40°06'56.895"N	104°37'04.154"W	0.94	
1329.00	13.270	281.360	1318.87	-29.32	28.38	-113.71	1747258.53	14569133.82	40°06'56.908"N	104°37'04.244"W	0.29	
1361.00	12.740	284.520	1350.05	-30.99	29.99	-120.73	1747251.51	14569135.40	40°06'56.924"N	104°37'04.334"W	2.77	
1392.00	12.660	285.230	1380.29	-32.79	31.74	-127.31	1747244.92	14569137.12	40°06'56.942"N	104°37'04.419"W	0.57	
1424.00	12.610	285.310	1411.52	-34.69	33.58	-134.07	1747238.16	14569138.93	40°06'56.960"N	104°37'04.506"W	0.17	
1455.00	12.830	284.260	1441.76	-36.49	35.32	-140.67	1747231.56	14569140.64	40°06'56.977"N	104°37'04.591"W	1.03	

REFERENCE WELLPATH IDENTIFICATION			
Operator	KERR-MCGEE OIL & GAS ONSHORE LP (WA)	Slot	SLOT#27 ZELDA 25-4HZ(373'FNL & 1204'FWL,SEC.25)
Area	COLORADO	Well	ZELDA 25-4HZ
Field	WELD COUNTY (UTM/TRUE NORTH)	Wellbore	ZELDA 25-4HZ AWB
Facility	SEC.25-T2N-R65W		

WELLPATH DATA (238 stations)												
MD [ft]	Inclination [°]	Azimuth [°]	TVD [ft]	Vert Sect [ft]	North [ft]	East [ft]	Grid East [US ft]	Grid North [US ft]	Latitude	Longitude	DLS [°/100ft]	Comments
1487.00	13.270	283.560	1472.93	-38.28	37.06	-147.68	1747224.54	14569142.35	40°06'56.994"N	104°37'04.681"W	1.46	
1519.00	12.960	282.060	1504.10	-39.95	38.67	-154.76	1747217.45	14569143.93	40°06'57.010"N	104°37'04.772"W	1.44	
1550.00	12.960	281.180	1534.31	-41.41	40.07	-161.57	1747210.64	14569145.30	40°06'57.024"N	104°37'04.860"W	0.64	
1582.00	12.350	281.620	1565.53	-42.85	41.46	-168.44	1747203.76	14569146.65	40°06'57.038"N	104°37'04.948"W	1.93	
1614.00	12.390	280.920	1596.79	-44.25	42.80	-175.16	1747197.04	14569147.97	40°06'57.051"N	104°37'05.035"W	0.48	
1646.00	12.610	281.180	1628.03	-45.63	44.12	-181.96	1747190.24	14569149.26	40°06'57.064"N	104°37'05.122"W	0.71	
1677.00	12.130	281.980	1658.31	-47.02	45.46	-188.47	1747183.73	14569150.57	40°06'57.077"N	104°37'05.206"W	1.64	
1709.00	11.820	283.030	1689.61	-48.51	46.89	-194.95	1747177.24	14569151.98	40°06'57.091"N	104°37'05.289"W	1.18	
1740.00	11.210	283.290	1719.99	-49.97	48.30	-200.98	1747171.21	14569153.36	40°06'57.105"N	104°37'05.367"W	1.97	
1772.00	10.900	283.380	1751.39	-51.43	49.72	-206.95	1747165.24	14569154.75	40°06'57.119"N	104°37'05.444"W	0.97	
1797.00	10.110	281.270	1775.97	-52.44	50.69	-211.40	1747160.79	14569155.70	40°06'57.129"N	104°37'05.501"W	3.51	LAST SURFACE MWD+IFR1 SURVEY
1887.00	10.020	280.540	1864.59	-55.55	53.67	-226.84	1747145.33	14569158.61	40°06'57.158"N	104°37'05.700"W	0.17	FIRST BHGE MWD+IFR1+MSA SURVEY
1974.00	8.550	294.730	1950.46	-59.75	57.76	-240.16	1747132.00	14569162.64	40°06'57.199"N	104°37'05.871"W	3.11	
2061.00	8.220	307.890	2036.54	-66.36	64.28	-250.94	1747121.20	14569169.12	40°06'57.263"N	104°37'06.010"W	2.23	
2149.00	8.010	305.530	2123.65	-73.87	71.71	-260.90	1747111.22	14569176.50	40°06'57.337"N	104°37'06.138"W	0.45	
2236.00	6.730	313.450	2209.94	-80.97	78.74	-269.53	1747102.55	14569183.49	40°06'57.406"N	104°37'06.249"W	1.88	
2323.00	5.400	324.610	2296.45	-87.87	85.58	-275.60	1747096.45	14569190.30	40°06'57.474"N	104°37'06.327"W	2.04	
2411.00	4.580	337.490	2384.12	-94.52	92.21	-279.35	1747092.68	14569196.91	40°06'57.539"N	104°37'06.376"W	1.57	
2498.00	4.150	355.470	2470.87	-100.88	98.55	-280.93	1747091.08	14569203.25	40°06'57.602"N	104°37'06.396"W	1.64	
2586.00	4.350	18.550	2558.63	-107.21	104.89	-280.12	1747091.86	14569209.58	40°06'57.665"N	104°37'06.386"W	1.94	
2674.00	5.710	20.950	2646.29	-114.44	112.14	-277.49	1747094.46	14569216.85	40°06'57.736"N	104°37'06.352"W	1.56	
2761.00	5.530	21.470	2732.88	-122.36	120.09	-274.41	1747097.50	14569224.80	40°06'57.815"N	104°37'06.312"W	0.22	
2849.00	6.800	28.820	2820.37	-130.83	128.60	-270.34	1747101.53	14569233.32	40°06'57.899"N	104°37'06.260"W	1.70	
2936.00	6.460	26.160	2906.78	-139.70	137.50	-265.70	1747106.13	14569242.25	40°06'57.987"N	104°37'06.200"W	0.53	
3024.00	5.940	25.680	2994.27	-148.21	146.05	-261.55	1747110.25	14569250.81	40°06'58.071"N	104°37'06.146"W	0.59	
3111.00	4.750	7.900	3080.90	-155.82	153.68	-259.10	1747112.66	14569258.44	40°06'58.147"N	104°37'06.115"W	2.33	
3199.00	2.730	8.100	3168.70	-161.50	159.36	-258.31	1747113.43	14569264.13	40°06'58.203"N	104°37'06.105"W	2.30	
3286.00	0.600	328.270	3255.66	-163.93	161.80	-258.25	1747113.47	14569266.56	40°06'58.227"N	104°37'06.104"W	2.65	
3374.00	0.730	324.940	3343.66	-164.79	162.65	-258.82	1747112.90	14569267.41	40°06'58.235"N	104°37'06.111"W	0.15	
3461.00	0.910	341.670	3430.65	-165.90	163.76	-259.35	1747112.36	14569268.52	40°06'58.246"N	104°37'06.118"W	0.34	
3573.00	0.820	330.680	3542.64	-167.45	165.30	-260.02	1747111.69	14569270.06	40°06'58.262"N	104°37'06.127"W	0.17	
3661.00	0.980	330.090	3630.63	-168.66	166.50	-260.71	1747111.00	14569271.26	40°06'58.273"N	104°37'06.136"W	0.18	
3749.00	1.220	315.390	3718.61	-169.99	167.82	-261.74	1747109.96	14569272.57	40°06'58.286"N	104°37'06.149"W	0.42	
3836.00	0.680	287.580	3805.60	-170.81	168.64	-262.88	1747108.81	14569273.38	40°06'58.294"N	104°37'06.164"W	0.80	
3924.00	0.210	83.780	3893.60	-170.99	168.81	-263.22	1747108.48	14569273.55	40°06'58.296"N	104°37'06.168"W	1.00	
4011.00	0.130	69.880	3980.60	-171.04	168.87	-262.97	1747108.73	14569273.61	40°06'58.297"N	104°37'06.165"W	0.10	
4099.00	0.180	93.740	4068.59	-171.06	168.89	-262.74	1747108.96	14569273.63	40°06'58.297"N	104°37'06.162"W	0.09	
4186.00	0.150	317.750	4155.59	-171.14	168.97	-262.68	1747109.02	14569273.71	40°06'58.298"N	104°37'06.161"W	0.35	
4274.00	0.510	311.400	4243.59	-171.48	169.31	-263.05	1747108.64	14569274.05	40°06'58.301"N	104°37'06.166"W	0.41	
4361.00	1.340	118.320	4330.59	-171.25	169.08	-262.45	1747109.25	14569273.83	40°06'58.299"N	104°37'06.158"W	2.12	
4449.00	1.190	115.220	4418.57	-170.36	168.21	-260.71	1747110.99	14569272.96	40°06'58.290"N	104°37'06.136"W	0.19	
4537.00	0.890	124.910	4506.55	-169.57	167.43	-259.33	1747112.38	14569272.18	40°06'58.283"N	104°37'06.118"W	0.39	
4624.00	0.720	129.360	4593.54	-168.83	166.69	-258.35	1747113.36	14569271.45	40°06'58.275"N	104°37'06.105"W	0.21	
4712.00	0.580	134.850	4681.54	-168.16	166.03	-257.61	1747114.10	14569270.79	40°06'58.269"N	104°37'06.096"W	0.17	
4799.00	0.870	118.170	4768.53	-167.53	165.40	-256.71	1747115.00	14569270.17	40°06'58.263"N	104°37'06.084"W	0.41	

REFERENCE WELLPATH IDENTIFICATION			
Operator	KERR-MCGEE OIL & GAS ONSHORE LP (WA)	Slot	SLOT#27 ZELDA 25-4HZ(373'FNL & 1204'FWL,SEC.25)
Area	COLORADO	Well	ZELDA 25-4HZ
Field	WELD COUNTY (UTM/TRUE NORTH)	Wellbore	ZELDA 25-4HZ AWB
Facility	SEC.25-T2N-R65W		

WELLPATH DATA (238 stations) † = interpolated/extrapolated station												
MD (ft)	Inclination (°)	Azimuth (°)	TVD (ft)	Vert Sect (ft)	North (ft)	East (ft)	Grid East (US ft)	Grid North (US ft)	Latitude	Longitude	DLS (°/100ft)	Comments
4887.00	1.160	69.230	4856.52	-167.52	165.41	-255.29	1747116.42	14569270.18	40°06'58.263"N	104°37'06.066"W	1.00	
4975.00	1.650	53.920	4944.49	-168.56	166.47	-253.43	1747118.27	14569271.25	40°06'58.273"N	104°37'06.042"W	0.70	
5062.00	1.590	68.950	5031.46	-169.72	167.64	-251.29	1747120.40	14569272.43	40°06'58.285"N	104°37'06.015"W	0.49	
5149.00	1.230	161.000	5118.44	-169.25	167.19	-249.86	1747121.84	14569271.99	40°06'58.280"N	104°37'05.996"W	2.35	
5237.00	0.440	68.790	5206.43	-168.48	166.42	-249.24	1747122.46	14569271.22	40°06'58.273"N	104°37'05.988"W	1.50	
5324.00	0.440	112.950	5293.43	-168.46	166.41	-248.62	1747123.08	14569271.21	40°06'58.272"N	104°37'05.980"W	0.38	
5412.00	0.440	353.830	5381.43	-168.67	166.61	-248.35	1747123.35	14569271.42	40°06'58.274"N	104°37'05.977"W	0.86	
5499.00	1.360	331.650	5468.42	-169.91	167.85	-248.87	1747122.82	14569272.66	40°06'58.287"N	104°37'05.983"W	1.11	
5586.00	0.990	320.440	5555.40	-171.41	169.34	-249.84	1747121.85	14569274.14	40°06'58.301"N	104°37'05.996"W	0.50	
5673.00	0.500	312.970	5642.39	-172.25	170.18	-250.60	1747121.09	14569274.97	40°06'58.310"N	104°37'06.006"W	0.57	
5761.00	0.510	5.400	5730.39	-172.91	170.83	-250.84	1747120.84	14569275.62	40°06'58.316"N	104°37'06.009"W	0.51	
5848.00	0.370	26.140	5817.38	-173.54	171.47	-250.68	1747121.00	14569276.26	40°06'58.322"N	104°37'06.007"W	0.24	
5936.00	0.310	330.050	5905.38	-174.00	171.93	-250.68	1747121.00	14569276.72	40°06'58.327"N	104°37'06.007"W	0.37	
6024.00	0.280	318.230	5993.38	-174.37	172.30	-250.94	1747120.74	14569277.09	40°06'58.331"N	104°37'06.010"W	0.08	
6111.00	0.340	268.850	6080.38	-174.53	172.45	-251.34	1747120.34	14569277.24	40°06'58.332"N	104°37'06.015"W	0.30	
6198.00	0.500	230.650	6167.38	-174.29	172.20	-251.89	1747119.79	14569276.99	40°06'58.330"N	104°37'06.022"W	0.36	
6286.00	1.140	219.170	6255.37	-173.37	171.28	-252.74	1747118.94	14569276.07	40°06'58.321"N	104°37'06.033"W	0.75	KOP
6373.00	12.010	181.250	6341.68	-163.63	161.53	-253.49	1747118.24	14569266.32	40°06'58.224"N	104°37'06.043"W	12.80	
6461.00	17.900	181.850	6426.66	-140.94	138.84	-254.12	1747117.70	14569243.63	40°06'58.000"N	104°37'06.051"W	6.70	
6548.00	21.870	181.270	6508.46	-111.38	109.27	-254.91	1747117.04	14569214.07	40°06'57.708"N	104°37'06.061"W	4.57	
6636.00	30.700	181.350	6587.28	-72.46	70.35	-255.81	1747116.31	14569175.16	40°06'57.323"N	104°37'06.073"W	10.03	
6723.00	36.240	180.390	6659.83	-24.52	22.39	-256.51	1747115.82	14569127.22	40°06'56.849"N	104°37'06.082"W	6.40	
6811.00	41.050	176.960	6728.55	30.40	-32.51	-255.15	1747117.41	14569072.34	40°06'56.307"N	104°37'06.064"W	5.98	
6891.00†	43.669	174.577	6787.66	84.17	-86.25	-251.15	1747121.64	14569018.64	40°06'55.776"N	104°37'06.013"W	3.84	ENTER LANDBOX (459'FNL & 952'FWL,SEC.25) 40.1154932 -104.6183368
6898.00	43.900	174.380	6792.71	88.99	-91.08	-250.68	1747122.13	14569013.82	40°06'55.728"N	104°37'06.007"W	3.84	
6986.00	49.860	179.430	6852.86	153.10	-155.15	-247.35	1747125.73	14568949.78	40°06'55.095"N	104°37'05.964"W	7.96	
7073.00	52.580	183.820	6907.36	220.84	-222.91	-249.33	1747124.05	14568882.05	40°06'54.425"N	104°37'05.989"W	5.02	
7161.00	62.950	182.630	6954.23	295.02	-297.13	-253.46	1747120.23	14568807.84	40°06'53.692"N	104°37'06.042"W	11.84	
7248.00	72.160	182.240	6987.42	375.24	-377.38	-256.87	1747117.18	14568727.61	40°06'52.899"N	104°37'06.086"W	10.59	
7336.00	79.120	182.390	7009.23	460.33	-462.51	-260.31	1747114.10	14568642.50	40°06'52.057"N	104°37'06.130"W	7.91	
7423.00	87.440	180.310	7019.40	546.61	-548.80	-262.33	1747112.45	14568556.23	40°06'51.205"N	104°37'06.156"W	9.85	LANDING (922'FNL & 942'FWL,SEC.25) 40.1142235 -104.6183768
7510.00	88.640	180.440	7022.38	633.55	-635.75	-262.90	1747112.26	14568469.31	40°06'50.345"N	104°37'06.164"W	1.39	
7598.00	88.680	179.510	7024.43	721.52	-723.72	-262.86	1747112.67	14568381.37	40°06'49.476"N	104°37'06.163"W	1.06	
7685.00	88.650	178.880	7026.46	808.50	-810.69	-261.64	1747114.27	14568294.45	40°06'48.617"N	104°37'06.148"W	0.72	
7773.00	89.110	178.460	7028.18	896.47	-898.65	-259.60	1747116.69	14568206.53	40°06'47.747"N	104°37'06.121"W	0.71	
7860.00	89.660	177.410	7029.11	983.43	-985.59	-256.46	1747120.20	14568119.64	40°06'46.888"N	104°37'06.081"W	1.36	
7947.00	90.090	177.020	7029.30	1070.36	-1072.48	-252.23	1747124.80	14568032.80	40°06'46.030"N	104°37'06.026"W	0.67	
8035.00	90.520	176.170	7028.84	1158.24	-1160.33	-247.01	1747130.40	14567945.01	40°06'45.161"N	104°37'05.959"W	1.08	
8123.00	89.320	178.290	7028.96	1246.16	-1248.22	-242.76	1747135.03	14567857.17	40°06'44.293"N	104°37'05.904"W	2.77	
8124.00†	89.318	178.282	7028.97	1247.16	-1249.22	-242.73	1747135.06	14567856.18	40°06'44.283"N	104°37'05.904"W	0.79	EXIT RADIUS HEEL (1622'FNL & 960'FWL,SEC.25) 40.1123009 -104.6183067
8210.00	89.140	177.630	7030.13	1333.12	-1335.15	-239.66	1747138.50	14567770.29	40°06'43.434"N	104°37'05.865"W	0.79	
8298.00	91.050	179.630	7029.98	1421.10	-1423.12	-237.56	1747140.98	14567682.36	40°06'42.565"N	104°37'05.837"W	3.14	
8386.00	91.660	179.290	7027.90	1509.08	-1511.09	-236.73	1747142.18	14567594.43	40°06'41.695"N	104°37'05.827"W	0.79	
8473.00	89.600	180.030	7026.94	1596.07	-1598.08	-236.21	1747143.07	14567507.48	40°06'40.836"N	104°37'05.820"W	2.52	
8561.00	90.550	179.900	7026.83	1684.06	-1686.08	-236.16	1747143.51	14567419.52	40°06'39.966"N	104°37'05.819"W	1.09	

REFERENCE WELLPATH IDENTIFICATION			
Operator	KERR-MCGEE OIL & GAS ONSHORE LP (WA)	Slot	SLOT#27 ZELDA 25-4HZ(373'FNL & 1204'FWL,SEC.25)
Area	COLORADO	Well	ZELDA 25-4HZ
Field	WELD COUNTY (UTM/TRUE NORTH)	Wellbore	ZELDA 25-4HZ AWB
Facility	SEC.25-T2N-R65W		

WELLPATH DATA (238 stations)												
MD [ft]	Inclination [°]	Azimuth [°]	TVD [ft]	Vert Sect [ft]	North [ft]	East [ft]	Grid East [US ft]	Grid North [US ft]	Latitude	Longitude	DLS [°/100ft]	Comments
8649.00	89.850	178.660	7026.52	1772.06	-1774.07	-235.05	1747144.99	14567331.57	40°06'39.096"N	104°37'05.805"W	1.62	
8736.00	89.260	177.590	7027.20	1859.03	-1861.02	-232.20	1747148.21	14567244.66	40°06'38.237"N	104°37'05.769"W	1.40	
8824.00	89.690	178.870	7028.00	1947.00	-1948.97	-229.49	1747151.30	14567156.76	40°06'37.368"N	104°37'05.734"W	1.53	
8911.00	90.120	179.120	7028.15	2034.00	-2035.96	-227.96	1747153.20	14567069.81	40°06'36.508"N	104°37'05.714"W	0.57	
8999.00	90.590	178.470	7027.60	2121.99	-2123.93	-226.11	1747155.43	14566981.88	40°06'35.639"N	104°37'05.690"W	0.91	
9086.00	90.400	179.950	7026.85	2208.98	-2210.92	-224.91	1747157.01	14566894.93	40°06'34.779"N	104°37'05.675"W	1.72	
9174.00	90.650	179.210	7026.05	2296.98	-2298.91	-224.27	1747158.03	14566806.98	40°06'33.910"N	104°37'05.666"W	0.89	
9261.00	89.510	180.400	7025.92	2383.97	-2385.91	-223.97	1747158.70	14566720.02	40°06'33.050"N	104°37'05.663"W	1.89	
9349.00	90.680	180.780	7025.78	2471.95	-2473.90	-224.88	1747158.17	14566632.05	40°06'32.181"N	104°37'05.674"W	1.40	
9436.00	91.110	180.280	7024.42	2558.93	-2560.89	-225.68	1747157.74	14566545.10	40°06'31.321"N	104°37'05.685"W	0.76	
9524.00	91.630	180.050	7022.31	2646.90	-2648.86	-225.93	1747157.87	14566457.16	40°06'30.452"N	104°37'05.688"W	0.65	
9612.00	89.200	178.840	7021.68	2734.89	-2736.85	-225.08	1747159.10	14566369.21	40°06'29.582"N	104°37'05.677"W	3.08	
9700.00	89.110	178.180	7022.98	2822.86	-2824.81	-222.79	1747161.76	14566281.30	40°06'28.713"N	104°37'05.647"W	0.76	
9787.00	88.980	176.760	7024.43	2909.79	-2911.71	-218.95	1747165.97	14566194.45	40°06'27.854"N	104°37'05.598"W	1.64	
9875.00	88.920	176.010	7026.04	2997.65	-2999.52	-213.41	1747171.90	14566106.70	40°06'26.986"N	104°37'05.526"W	0.85	
9962.00	90.590	178.530	7026.41	3084.57	-3086.41	-209.26	1747176.41	14566019.86	40°06'26.128"N	104°37'05.473"W	3.47	
10050.00	89.820	179.240	7026.10	3172.56	-3174.39	-207.55	1747178.50	14565931.92	40°06'25.258"N	104°37'05.451"W	1.19	
10138.00	89.660	177.490	7026.49	3260.54	-3262.35	-205.04	1747181.39	14565844.01	40°06'24.389"N	104°37'05.419"W	2.00	
10225.00	88.680	179.110	7027.75	3347.51	-3349.30	-202.46	1747184.34	14565757.10	40°06'23.530"N	104°37'05.386"W	2.18	
10313.00	88.580	181.050	7029.86	3435.47	-3437.27	-202.58	1747184.60	14565669.17	40°06'22.660"N	104°37'05.387"W	2.21	
10400.00	90.180	180.700	7030.80	3522.44	-3524.25	-203.91	1747183.65	14565582.21	40°06'21.801"N	104°37'05.404"W	1.88	
10488.00	90.310	180.460	7030.42	3610.42	-3612.25	-204.80	1747183.13	14565494.25	40°06'20.931"N	104°37'05.416"W	0.31	
10576.00	90.310	180.020	7029.95	3698.42	-3700.24	-205.17	1747183.14	14565406.29	40°06'20.062"N	104°37'05.420"W	0.50	
10663.00	89.780	179.830	7029.88	3785.41	-3787.24	-205.06	1747183.63	14565319.32	40°06'19.202"N	104°37'05.419"W	0.65	
10751.00	90.310	180.410	7029.81	3873.41	-3875.24	-205.24	1747183.83	14565231.36	40°06'18.332"N	104°37'05.421"W	0.89	
10838.00	91.080	180.270	7028.76	3960.39	-3962.23	-205.76	1747183.68	14565144.40	40°06'17.473"N	104°37'05.428"W	0.90	
10926.00	90.950	181.170	7027.20	4048.36	-4050.21	-206.86	1747182.96	14565056.45	40°06'16.603"N	104°37'05.442"W	1.03	
11013.00	90.890	180.860	7025.80	4135.32	-4137.19	-208.40	1747181.79	14564969.50	40°06'15.744"N	104°37'05.462"W	0.36	
11101.00	90.710	181.170	7024.57	4223.28	-4225.16	-209.96	1747180.61	14564881.55	40°06'14.874"N	104°37'05.482"W	0.41	
11188.00	89.140	180.150	7024.68	4310.26	-4312.15	-210.96	1747179.98	14564794.59	40°06'14.015"N	104°37'05.495"W	2.15	
11279.00	88.060	179.480	7026.91	4401.23	-4403.13	-210.67	1747180.67	14564703.66	40°06'13.116"N	104°37'05.491"W	1.40	
11370.00	88.830	179.560	7029.38	4492.19	-4494.09	-209.91	1747181.82	14564612.74	40°06'12.217"N	104°37'05.481"W	0.85	
11461.00	89.450	181.210	7030.74	4583.17	-4585.07	-210.52	1747181.60	14564521.79	40°06'11.318"N	104°37'05.489"W	1.94	
11552.00	87.840	180.260	7032.90	4674.12	-4676.04	-211.69	1747180.83	14564430.86	40°06'10.419"N	104°37'05.504"W	2.05	
11643.00	89.140	181.080	7035.29	4765.07	-4766.99	-212.75	1747180.15	14564339.93	40°06'09.520"N	104°37'05.518"W	1.69	
11730.00	90.800	182.380	7035.34	4852.00	-4853.95	-215.38	1747177.90	14564253.00	40°06'08.661"N	104°37'05.552"W	2.42	
11818.00	90.250	181.550	7034.53	4939.91	-4941.89	-218.39	1747175.26	14564165.07	40°06'07.792"N	104°37'05.590"W	1.13	
11905.00	92.060	181.770	7032.78	5026.83	-5028.84	-220.91	1747173.12	14564078.16	40°06'06.932"N	104°37'05.623"W	2.10	
11992.00	91.110	180.670	7030.37	5113.76	-5115.78	-222.76	1747171.64	14563991.24	40°06'06.073"N	104°37'05.647"W	1.67	
12080.00	90.890	179.360	7028.84	5201.74	-5203.76	-222.79	1747172.00	14563903.29	40°06'05.204"N	104°37'05.647"W	1.51	
12167.00	90.460	179.800	7027.81	5288.73	-5290.76	-222.15	1747173.01	14563816.33	40°06'04.344"N	104°37'05.639"W	0.71	
12255.00	90.550	179.680	7027.04	5376.73	-5378.75	-221.75	1747173.79	14563728.38	40°06'03.474"N	104°37'05.634"W	0.17	
12343.00	90.620	179.920	7026.14	5464.72	-5466.75	-221.44	1747174.47	14563640.42	40°06'02.605"N	104°37'05.630"W	0.28	
12430.00	89.260	177.530	7026.23	5551.71	-5553.72	-219.51	1747176.78	14563553.49	40°06'01.745"N	104°37'05.605"W	3.16	
12605.00	88.150	177.650	7030.18	5726.56	-5728.51	-212.15	1747184.89	14563378.79	40°06'00.018"N	104°37'05.510"W	0.64	

REFERENCE WELLPATH IDENTIFICATION			
Operator	KERR-MCGEE OIL & GAS ONSHORE LP (WA)	Slot	SLOT#27 ZELDA 25-4HZ(373'FNL & 1204'FWL, SEC.25)
Area	COLORADO	Well	ZELDA 25-4HZ
Field	WELD COUNTY (UTM/TRUE NORTH)	Wellbore	ZELDA 25-4HZ AWB
Facility	SEC.25-T2N-R65W		

WELLPATH DATA (238 stations)												
MD [ft]	Inclination [°]	Azimuth [°]	TVD [ft]	Vert Sect [ft]	North [ft]	East [ft]	Grid East [US ft]	Grid North [US ft]	Latitude	Longitude	DLS [°/100ft]	Comments
12693.00	89.690	181.290	7031.84	5814.53	-5816.48	-211.34	1747186.08	14563290.87	40°05'59.149"N	104°37'05.500"W	4.49	
12780.00	89.170	179.830	7032.71	5901.50	-5903.47	-212.19	1747185.60	14563203.91	40°05'58.289"N	104°37'05.510"W	1.78	
12868.00	91.750	180.990	7032.00	5989.48	-5991.45	-212.82	1747185.35	14563115.96	40°05'57.420"N	104°37'05.519"W	3.21	
12955.00	92.160	180.440	7029.03	6076.41	-6078.39	-213.90	1747184.64	14563029.05	40°05'56.560"N	104°37'05.533"W	0.79	
13042.00	90.860	179.840	7026.74	6163.37	-6165.36	-214.12	1747184.80	14562942.11	40°05'55.701"N	104°37'05.535"W	1.65	
13130.00	90.000	179.040	7026.08	6251.37	-6253.35	-213.26	1747186.04	14562854.16	40°05'54.831"N	104°37'05.524"W	1.33	
13218.00	90.220	178.300	7025.91	6339.36	-6341.33	-211.21	1747188.46	14562766.23	40°05'53.962"N	104°37'05.498"W	0.88	
13305.00	92.250	180.990	7024.04	6426.33	-6428.29	-210.67	1747189.37	14562679.30	40°05'53.103"N	104°37'05.491"W	3.87	
13393.00	92.550	180.720	7020.35	6514.23	-6516.21	-211.99	1747188.44	14562591.42	40°05'52.234"N	104°37'05.508"W	0.46	
13480.00	91.080	179.250	7017.60	6601.17	-6603.16	-211.96	1747188.84	14562504.50	40°05'51.375"N	104°37'05.507"W	2.39	
13567.00	89.720	179.090	7016.99	6688.17	-6690.15	-210.70	1747190.47	14562417.55	40°05'50.515"N	104°37'05.491"W	1.57	
13655.00	91.600	179.790	7015.97	6776.16	-6778.13	-209.84	1747191.71	14562329.60	40°05'49.646"N	104°37'05.480"W	2.28	
13742.00	93.730	179.620	7011.93	6863.06	-6865.03	-209.39	1747192.53	14562242.74	40°05'48.787"N	104°37'05.474"W	2.46	
13830.00	92.030	178.950	7007.51	6950.94	-6952.91	-208.30	1747194.00	14562154.90	40°05'47.918"N	104°37'05.460"W	2.08	
13918.00	90.430	177.260	7005.62	7038.89	-7040.83	-205.39	1747197.29	14562067.03	40°05'47.049"N	104°37'05.423"W	2.64	
14005.00	88.950	177.110	7006.09	7125.81	-7127.73	-201.12	1747201.94	14561980.19	40°05'46.191"N	104°37'05.368"W	1.71	
14092.00	87.690	178.630	7008.64	7212.74	-7214.62	-197.88	1747205.54	14561893.34	40°05'45.332"N	104°37'05.326"W	2.27	
14180.00	88.180	179.950	7011.81	7300.68	-7302.56	-196.79	1747207.01	14561805.44	40°05'44.463"N	104°37'05.312"W	1.60	
14268.00	89.260	180.440	7013.78	7388.65	-7390.53	-197.09	1747207.09	14561717.50	40°05'43.594"N	104°37'05.316"W	1.35	
14355.00	89.260	180.020	7014.90	7475.63	-7477.53	-197.44	1747207.11	14561630.54	40°05'42.734"N	104°37'05.321"W	0.48	
14442.00	90.620	180.730	7014.99	7562.62	-7564.52	-198.01	1747206.92	14561543.58	40°05'41.874"N	104°37'05.328"W	1.76	
14530.00	91.020	180.320	7013.73	7650.60	-7652.51	-198.82	1747206.49	14561455.62	40°05'41.005"N	104°37'05.338"W	0.65	
14618.00	90.550	179.360	7012.53	7738.59	-7740.50	-198.57	1747207.11	14561367.67	40°05'40.135"N	104°37'05.335"W	1.21	
14705.00	89.410	178.320	7012.56	7825.58	-7827.48	-196.81	1747209.25	14561280.73	40°05'39.276"N	104°37'05.312"W	1.77	
14793.00	89.040	177.850	7013.75	7913.54	-7915.42	-193.87	1747212.57	14561192.84	40°05'38.407"N	104°37'05.274"W	0.68	
14880.00	88.980	178.580	7015.25	8000.50	-8002.36	-191.16	1747215.65	14561105.94	40°05'37.547"N	104°37'05.240"W	0.84	
14968.00	90.710	180.160	7015.49	8088.50	-8090.35	-190.19	1747216.99	14561017.99	40°05'36.678"N	104°37'05.227"W	2.66	
15055.00	90.920	179.370	7014.25	8175.49	-8177.34	-189.84	1747217.72	14560931.04	40°05'35.818"N	104°37'05.223"W	0.94	
15143.00	90.340	178.890	7013.28	8263.48	-8265.33	-188.50	1747219.44	14560843.09	40°05'34.949"N	104°37'05.205"W	0.86	
15230.00	90.370	179.160	7012.75	8350.47	-8352.31	-187.02	1747221.29	14560756.15	40°05'34.089"N	104°37'05.186"W	0.31	
15318.00	90.550	178.020	7012.04	8438.46	-8440.28	-184.85	1747223.83	14560668.22	40°05'33.220"N	104°37'05.158"W	1.31	
15405.00	89.510	179.280	7011.99	8525.45	-8527.25	-182.81	1747226.26	14560581.29	40°05'32.360"N	104°37'05.132"W	1.88	
15493.00	91.790	180.680	7010.99	8613.43	-8615.24	-182.77	1747226.67	14560493.34	40°05'31.491"N	104°37'05.132"W	3.04	
15580.00	91.820	180.450	7008.25	8700.37	-8702.19	-183.63	1747226.18	14560406.42	40°05'30.632"N	104°37'05.143"W	0.27	
15668.00	91.910	180.610	7005.39	8788.31	-8790.14	-184.45	1747225.75	14560318.50	40°05'29.763"N	104°37'05.153"W	0.21	
15755.00	89.970	178.890	7003.96	8875.29	-8877.12	-184.07	1747226.50	14560231.56	40°05'28.903"N	104°37'05.148"W	2.98	
15842.00	89.850	178.550	7004.10	8962.28	-8964.10	-182.12	1747228.82	14560144.63	40°05'28.043"N	104°37'05.123"W	0.41	
15930.00	89.510	178.540	7004.59	9050.27	-9052.07	-179.89	1747231.43	14560056.70	40°05'27.174"N	104°37'05.094"W	0.39	
16017.00	89.020	177.550	7005.71	9137.23	-9139.01	-176.92	1747234.77	14559969.81	40°05'26.315"N	104°37'05.056"W	1.27	
16105.00	88.830	177.710	7007.36	9225.17	-9226.92	-173.28	1747238.79	14559881.95	40°05'25.446"N	104°37'05.009"W	0.28	
16192.00	89.850	178.570	7008.36	9312.13	-9313.87	-170.46	1747241.98	14559795.05	40°05'24.587"N	104°37'04.973"W	1.53	
16279.00	90.370	178.570	7008.19	9399.12	-9400.84	-168.29	1747244.53	14559708.12	40°05'23.728"N	104°37'04.945"W	0.60	
16367.00	89.200	177.800	7008.52	9487.09	-9488.79	-165.50	1747247.69	14559620.21	40°05'22.858"N	104°37'04.909"W	1.59	
16454.00	91.570	179.530	7007.94	9574.07	-9575.76	-163.47	1747250.09	14559533.29	40°05'21.999"N	104°37'04.883"W	3.37	
16542.00	91.910	179.060	7005.27	9662.03	-9663.71	-162.39	1747251.55	14559445.38	40°05'21.130"N	104°37'04.869"W	0.66	



REFERENCE WELLPATH IDENTIFICATION			
Operator	KERR-MCGEE OIL & GAS ONSHORE LP (WA)	Slot	SLOT#27 ZELDA 25-4HZ(373'FNL & 1204'FWL,SEC.25)
Area	COLORADO	Well	ZELDA 25-4HZ
Field	WELD COUNTY (UTM/TRUE NORTH)	Wellbore	ZELDA 25-4HZ AWB
Facility	SEC.25-T2N-R65W		

WELLPATH DATA (238 stations) † = interpolated/extrapolated station												
MD [ft]	Inclination [°]	Azimuth [°]	TVD [ft]	Vert Sect [ft]	North [ft]	East [ft]	Grid East [US ft]	Grid North [US ft]	Latitude	Longitude	DLS [°/100ft]	Comments
16630.00	91.760	178.790	7002.45	9749.98	-9751.65	-160.74	1747253.58	14559357.48	40°05'20.261"N	104°37'04.848"W	0.35	
16717.00	92.130	178.410	6999.50	9836.92	-9838.57	-158.62	1747256.08	14559270.60	40°05'19.402"N	104°37'04.821"W	0.61	
16805.00	91.230	179.100	6996.92	9924.87	-9926.51	-156.71	1747258.36	14559182.71	40°05'18.533"N	104°37'04.796"W	1.29	
16864.00†	91.298	179.046	6995.61	9983.86	-9985.49	-155.75	1747259.57	14559123.76	40°05'17.950"N	104°37'04.784"W	0.15	ENTER RADIUS TOE (298'FSL & 973'FWL,SEC.36) 40.0883194 -104.6179955
16892.00	91.330	179.020	6994.97	10011.85	-10013.48	-155.28	1747260.16	14559095.78	40°05'17.673"N	104°37'04.778"W	0.15	
16979.00	90.800	180.340	6993.36	10098.83	-10100.46	-154.79	1747261.02	14559008.83	40°05'16.814"N	104°37'04.771"W	1.63	
17067.00	90.620	180.070	6992.27	10186.82	-10188.45	-155.11	1747261.09	14558920.88	40°05'15.944"N	104°37'04.775"W	0.37	
17154.00	90.860	179.790	6991.14	10273.81	-10275.45	-155.00	1747261.57	14558833.92	40°05'15.085"N	104°37'04.774"W	0.42	
17242.00	91.020	179.620	6989.70	10361.80	-10363.43	-154.55	1747262.40	14558745.97	40°05'14.215"N	104°37'04.768"W	0.27	
17329.00	90.460	179.700	6988.57	10448.79	-10450.42	-154.03	1747263.29	14558659.01	40°05'13.355"N	104°37'04.762"W	0.65	
17417.00	90.250	179.600	6988.03	10536.79	-10538.42	-153.49	1747264.21	14558571.06	40°05'12.486"N	104°37'04.755"W	0.26	
17447.00	90.400	179.390	6987.86	10566.79	-10568.42	-153.23	1747264.60	14558541.07	40°05'12.189"N	104°37'04.751"W	0.86	LAST BHGE MWD+IFR1+MSA SURVEY
17491.00	90.400	179.390	6987.55	10610.78	-10612.42	-152.76	1747265.26	14558497.09	40°05'11.755"N	104°37'04.745"W	0.00	PTB (329'FNL & 976'FWL,SEC.01) 40.0865985 -104.6179848

HOLE & CASING SECTIONS - Ref Wellbore: ZELDA 25-4HZ AWB Ref Wellpath: ZELDA 25-4HZ AWP									
String/Diameter	Start MD [ft]	End MD [ft]	Interval [ft]	Start TVD [ft]	End TVD [ft]	Start N/S [ft]	Start E/W [ft]	End N/S [ft]	End E/W [ft]
9.625in Casing Surface	17.00	1837.00	1820.00	17.00	1815.35	0.00	0.00	52.04	-218.27

TARGETS								
Name	TVD [ft]	North [ft]	East [ft]	Grid East [US ft]	Grid North [US ft]	Latitude	Longitude	Shape
SEC.36-T2N-R65W	2.00	-1892.83	2048.57	1749428.22	14567222.67	40°06'37.922"N	104°36'36.414"W	polygon
SEC.25-T2N-R65W	22.00	8025.02	722.29	1748059.81	14577130.87	40°08'15.932"N	104°36'53.480"W	polygon
ZELDA 25-4HZ BHL REV-1(331'FNL & 963'FWL,SEC.01)	6994.00	-10614.41	-165.97	1747252.06	14558495.04	40°05'11.735"N	104°37'04.915"W	point
ZELDA 25-4HZ HEEL REV-1(950'FNL & 951'FWL,SEC.25)	7024.00	-575.58	-249.24	1747125.65	14568529.51	40°06'50.940"N	104°37'05.988"W	point
ZELDA 25-4HZ INT. TARGET@6750'VS	7024.00	-6751.87	-198.01	1747203.42	14562355.91	40°05'49.905"N	104°37'05.328"W	point
ZELDA 25-4HZ LANDBOX	7024.00	0.00	0.00	1747372.32	14569105.94	40°06'56.628"N	104°37'02.780"W	polygon
ZELDA 25-4HZ RADIUS 1	7024.00	-968.86	123.76	1747500.20	14568138.00	40°06'47.054"N	104°37'01.187"W	polygon
ZELDA 25-4HZ RADIUS 2	7024.00	-10285.65	188.42	1747604.90	14558825.20	40°05'14.984"N	104°37'00.356"W	polygon

REFERENCE WELLPATH IDENTIFICATION			
Operator	KERR-MCGEE OIL & GAS ONSHORE LP (WA)	Slot	SLOT#27 ZELDA 25-4HZ(373'FNL & 1204'FWL,SEC.25)
Area	COLORADO	Well	ZELDA 25-4HZ
Field	WELD COUNTY (UTM/TRUE NORTH)	Wellbore	ZELDA 25-4HZ AWB
Facility	SEC.25-T2N-R65W		

WELLPATH COMPOSITION - Ref Wellbore: ZELDA 25-4HZ AWB Ref Wellpath: ZELDA 25-4HZ AWP				
Start MD [ft]	End MD [ft]	Positional Uncertainty Model	Log Name/Comment	Wellbore
17.00	1797.00	Custom APC ISCWSA REV 2 MWD+IFR1 (approximation)	Custom APC ISCWSA Rev-2 MWD+IFR1 <125 - 1797>	ZELDA 25-4HZ AWB
1797.00	17447.00	Custom APC ISCWSA REV 2 MWD+IFR1+MSA (approximation)	BHGE Custom APC ISCWSA Rev-2 MWD+IFR1+MSA <1887 - 17447>	ZELDA 25-4HZ AWB
17447.00	17491.00	Blind Drilling (std)	Projection to bit	ZELDA 25-4HZ AWB

REFERENCE WELLPATH IDENTIFICATION			
Operator	KERR-MCGEE OIL & GAS ONSHORE LP (WA)	Slot	SLOT#27 ZELDA 25-4HZ(373'FNL & 1204'FWL,SEC.25)
Area	COLORADO	Well	ZELDA 25-4HZ
Field	WELD COUNTY (UTM/TRUE NORTH)	Wellbore	ZELDA 25-4HZ AWB
Facility	SEC.25-T2N-R65W		

WELLPATH COMMENTS				
MD [ft]	Inclination [°]	Azimuth [°]	TVD [ft]	Comment
125.00	0.000	98.020	125.00	FIRST SURFACE MWD+IFR1 SURVEY
1797.00	10.110	281.270	1775.97	LAST SURFACE MWD+IFR1 SURVEY
1887.00	10.020	280.540	1864.59	FIRST BHGE MWD+IFR1+MSA SURVEY
6286.00	1.140	219.170	6255.37	KOP
6891.00	43.669	174.577	6787.66	ENTER LANDBOX (459'FNL & 952'FWL,SEC.25) 40.1154932 -104.6183368
7423.00	87.440	180.310	7019.40	LANDING (922'FNL & 942'FWL,SEC.25) 40.1142235 -104.6183768
8124.00	89.318	178.282	7028.97	EXIT RADIUS HEEL (1622'FNL & 960'FWL,SEC.25) 40.1123009 -104.6183067
16864.00	91.298	179.046	6995.61	ENTER RADIUS TOE (298'FSL & 973'FWL,SEC.36) 40.0883194 -104.6179955
17447.00	90.400	179.390	6987.86	LAST BHGE MWD+IFR1+MSA SURVEY
17491.00	90.400	179.390	6987.55	PTB (329'FNL & 976'FWL,SEC.01) 40.0865985 -104.6179848