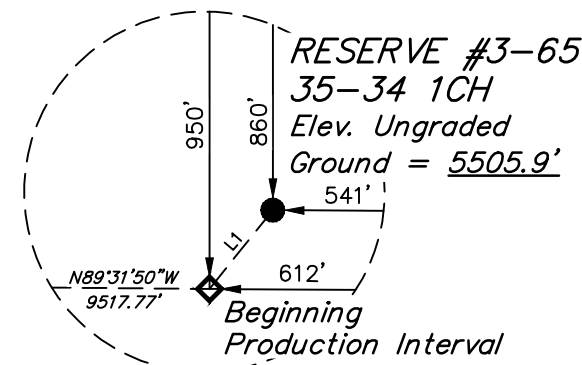
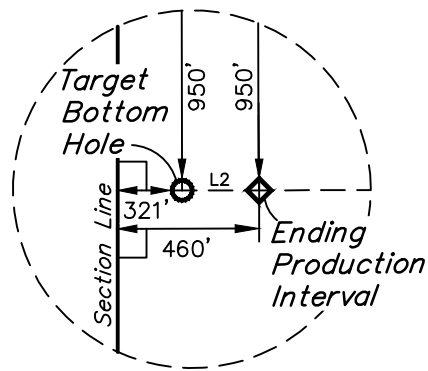


T3S, R65W, 6th P.M.

ConocoPhillips Company

RESERVE #3-65
35-34 1CH
Elev. Ungraded
Ground = 5505.9'

BASIS OF BEARINGS
BASIS OF BEARINGS IS A G.P.S. OBSERVATION
BASIS OF ELEVATION
BENCHMARK 374 LOCATED ON THE SECTION LINE BETWEEN SECTIONS 12 & 13, T5S, R64W, 6th. P.M., TAKEN FROM 1988 PUBLISHED DATUM BY THE UNITED STATES DEPARTMENT OF THE INTERIOR, GEOLOGICAL SURVEY AS BEING 6054.61 FEET.



Brass Cap,
In Concrete,
In Monument Box
Lat: 39.754492°
Long: 104.659431°

Detail "B"
No Scale

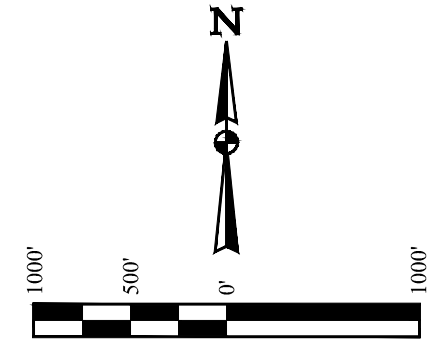
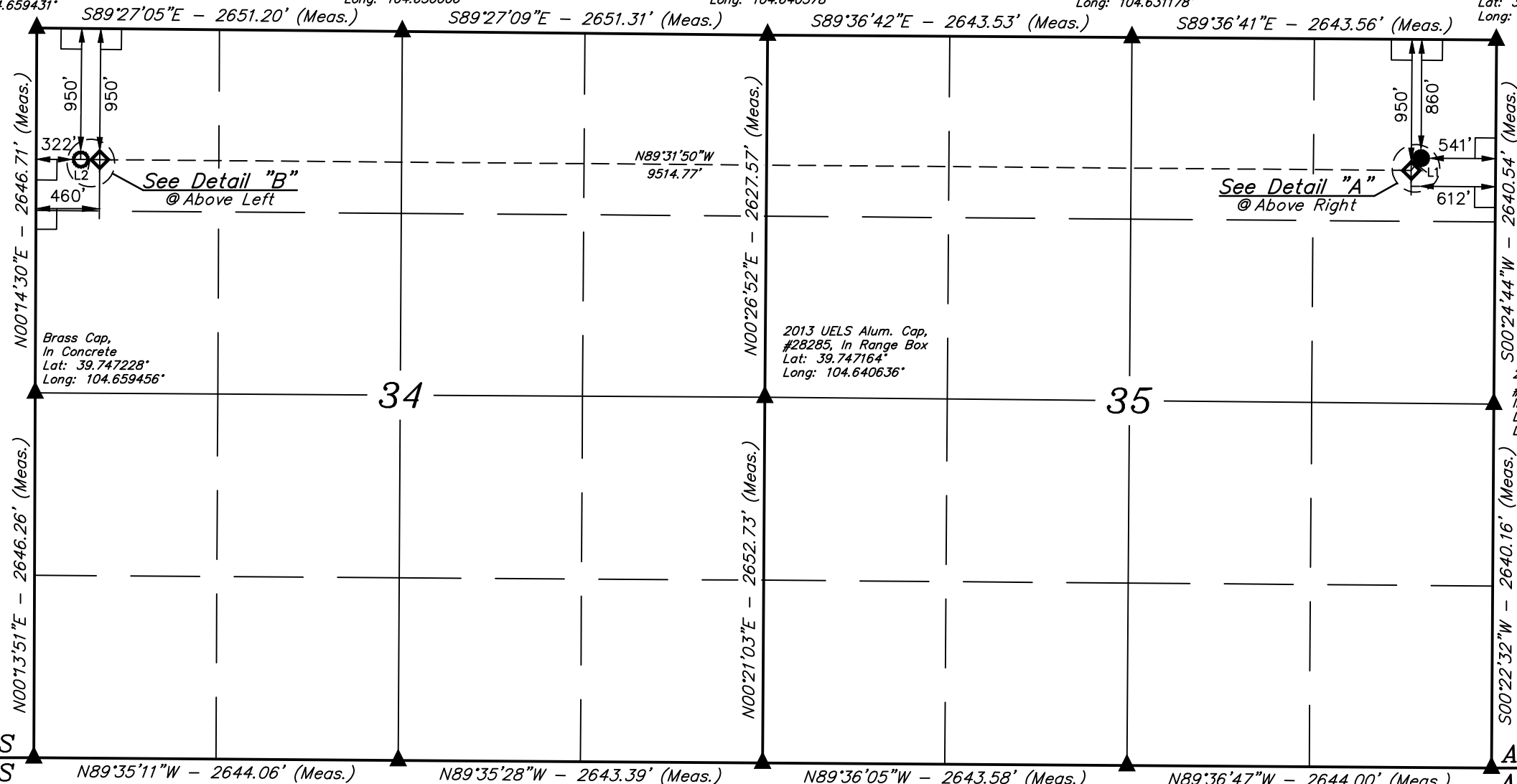
2013 UELS Alum. Cap,
#28285, In Monument Box
Lat: 39.754433°
Long: 104.650006°

2013 UELS Alum. Cap,
#28285, In Monument Box
Lat: 39.754375°
Long: 104.640578°

Set PK Nail, In Asphalt,
Flush W/Ground
Lat: 39.754336°
Long: 104.631178°

Detail "A"
No Scale

2013 UELS Alum. Cap,
#28285, 0.6' Below Ground,
In Range Box
Lat: 39.754297°
Long: 104.621781°



LINE TABLE		
LINE	DIRECTION	LENGTH
L1	S38°46'22\"W	114.20'
L2	N89°27'05\"W	138.00'

CERTIFICATION

THIS IS TO CERTIFY THAT THE ABOVE WAS PREPARED FROM FIELD NOTES OF ACTUAL SURVEYS MADE BY ME OR UNDER MY SUPERVISION AND THAT THE SAME ARE TRUE AND CORRECT TO THE BEST OF MY KNOWLEDGE AND BELIEF.

ARAPAHOE COUNTY REGISTERED LAND SURVEYOR
REGISTRATION NO. 28285
STATE OF COLORADO
10-29-18

T3S Private Alum. Cap, #35593, Lat: 39.739964°, Long: 104.659475°
1989 Brass Cap, #9652, 0.8' Below Ground, In Monument Box, Lat: 39.739925°, Long: 104.650078°
1995 Private Alum. Cap, #28656, 0.3' High, Lat: 39.739883°, Long: 104.640681°
Steel Pin, 0.1' Below Asphalt, Lat: 39.739844°, Long: 104.631283°
1991 C.D.O.T. Alum. Cap, #25618, 0.5' High, Lat: 39.739806°, Long: 104.621883°

PDOP = 1.6

REV: 1 10-29-18 J.U. (EPI MOVE)

- LEGEND:**
- = 90° SYMBOL
 - = PROPOSED WELLHEAD.
 - = TARGET BOTTOM HOLE.
 - ◇ = LANDING POINT.
 - ▲ = SECTION CORNERS LOCATED. (NAD 83)

NAD 83 (SURFACE LOCATION)	NAD 83 (BEG. PROD. INTERVAL)	NAD 83 (ENDING PROD. INTERVAL)	NAD 83 (TARGET BOTTOM HOLE)
LATITUDE = 39°45'07.00" (39.751944°)	LATITUDE = 39°45'06.12" (39.751700°)	LATITUDE = 39°45'06.74" (39.751873)	LATITUDE = 39°45'06.76" (39.751876°)
LONGITUDE = 104°37'25.40" (104.623721°)	LONGITUDE = 104°37'26.31" (104.623975°)	LONGITUDE = 104°39'28.10" (104.657804)	LONGITUDE = 104°39'29.86" (104.658295°)
NAD 27 (SURFACE LOCATION)	NAD 27 (BEG. PROD. INTERVAL)	NAD 27 (ENDING PROD. INTERVAL)	NAD 27 (TARGET BOTTOM HOLE)
LATITUDE = 39°45'07.03" (39.751958°)	LATITUDE = 39°45'06.17" (39.751713°)	LATITUDE = 39°45'06.79" (39.751886)	LATITUDE = 39°45'06.80" (39.751889°)
LONGITUDE = 104°37'23.52" (104.623199°)	LONGITUDE = 104°37'24.43" (104.623453°)	LONGITUDE = 104°39'26.21" (104.657280)	LONGITUDE = 104°39'27.98" (104.657771°)
STATE PLANE NAD 83 (CO. NORTH)	STATE PLANE NAD 83 (CO. NORTH)	STATE PLANE NAD 83 (CO. NORTH)	STATE PLANE NAD 83 (CO. NORTH)
N: 1153704.86 E: 3246381.52	N: 1153586.13 E: 3246311.03	N: 1153586.13 E: 3236799.05	N: 1153585.90 E: 3236661.09
STATE PLANE NAD 27 (CO. NORTH)	STATE PLANE NAD 27 (CO. NORTH)	STATE PLANE NAD 27 (CO. NORTH)	STATE PLANE NAD 27 (CO. NORTH)
N: 153708.34 E: 2246534.85	N: 153618.53 E: 2246464.36	N: 153589.47 E: 2236952.47	N: 153589.24 E: 2236814.51

UINTEAH
ENGINEERING & LAND SURVEYING

UELS, LLC
Corporate Office * 85 South 200 East
Vernal, UT 84078 * (435) 789-1017

SURVEYED BY	C.M., O.R.	09-04-18	SCALE
DRAWN BY	K.A.	09-25-18	1" = 1000'

WELL LOCATION PLAT