

T3S, R65W, 6th P.M.

ConocoPhillips Company

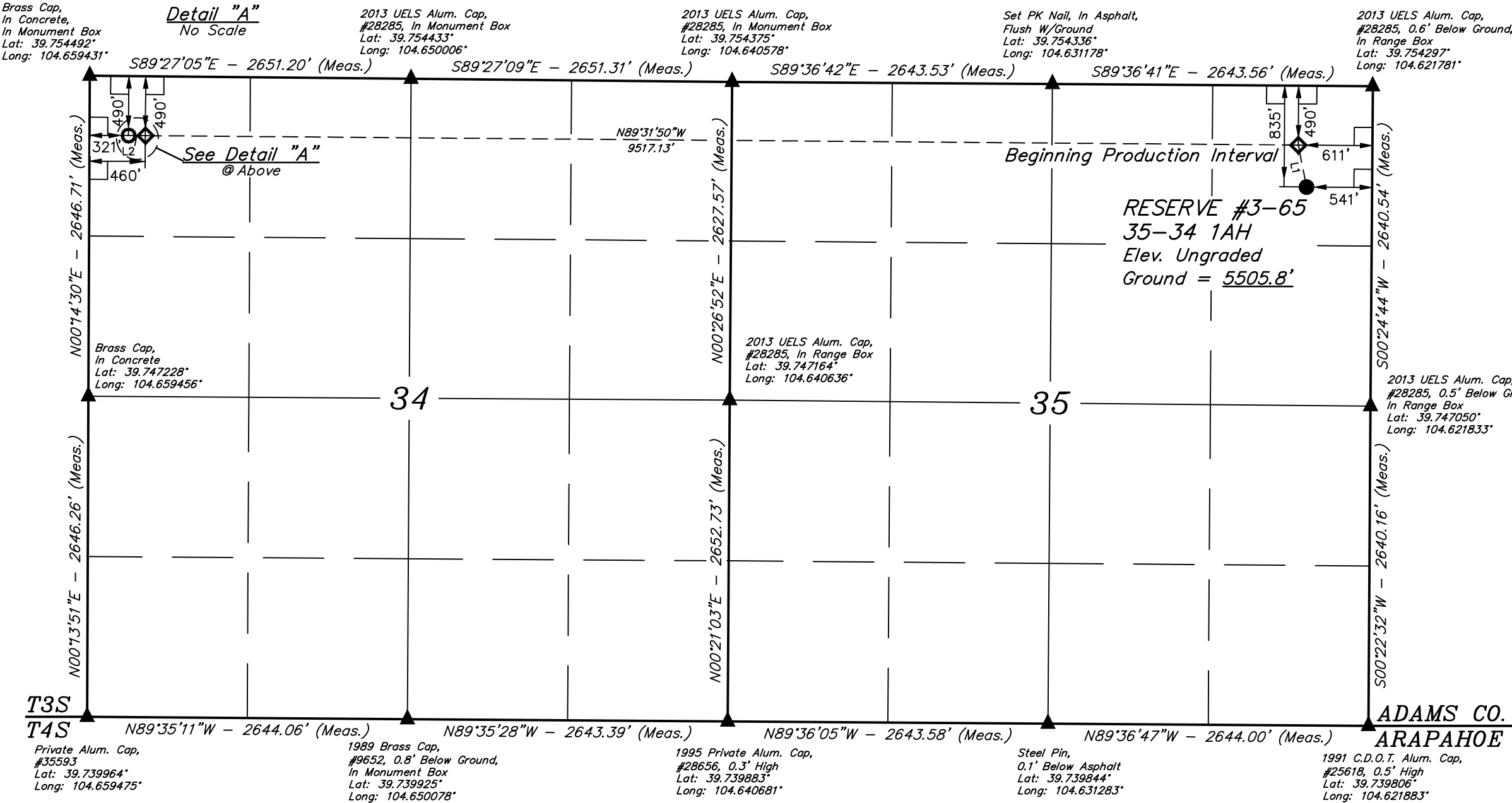
RESERVE #3-65 35-34 1AH
NE 1/4 NE 1/4, SECTION 35, T3S, R65W, 6th P.M.
ADAMS COUNTY, COLORADO

BASIS OF BEARINGS

BASIS OF BEARINGS IS A G.P.S. OBSERVATION

BASIS OF ELEVATION

BENCHMARK 374 LOCATED ON THE SECTION LINE BETWEEN
SECTIONS 12 & 13, T5S, R64W, 6th. P.M., TAKEN FROM 1988
PUBLISHED DATUM BY THE UNITED STATES DEPARTMENT OF
THE INTERIOR, GEOLOGICAL SURVEY AS BEING 6054.61 FEET.



LEGEND:

- 90° SYMBOL
- PROPOSED WELLHEAD.
- TARGET BOTTOM HOLE.
- LANDING POINT.
- SECTION CORNERS LOCATED. (NAD 83)

NAD 83 (SURFACE LOCATION)	NAD 83 (BEG. PROD. INTERVAL)	NAD 83 (ENDING PROD. INTERVAL)	NAD 83 (TARGET BOTTOM HOLE)
LATITUDE = 39°45'07.25" (39.752013°)	LATITUDE = 39°45'10.66" (39.752962°)	LATITUDE = 39°45'11.29" (39.753136)	LATITUDE = 39°45'11.30" (39.753139°)
LONGITUDE = 104°37'25.40" (104.623721°)	LONGITUDE = 104°37'26.26" (104.623962°)	LONGITUDE = 104°39'28.08" (104.657800)	LONGITUDE = 104°39'27.97" (104.658294°)
NAD 27 (SURFACE LOCATION)	NAD 27 (BEG. PROD. INTERVAL)	NAD 27 (ENDING PROD. INTERVAL)	NAD 27 (TARGET BOTTOM HOLE)
LATITUDE = 39°45'07.29" (39.752026°)	LATITUDE = 39°45'10.71" (39.752976°)	LATITUDE = 39°45'11.34" (39.753149)	LATITUDE = 39°45'11.35" (39.753152°)
LONGITUDE = 104°37'23.52" (104.623199°)	LONGITUDE = 104°37'24.38" (104.623440°)	LONGITUDE = 104°39'26.19" (104.657276)	LONGITUDE = 104°39'27.97" (104.657771°)
STATE PLANE NAD 83 (CO. NORTH)	STATE PLANE NAD 83 (CO. NORTH)	STATE PLANE NAD 83 (CO. NORTH)	STATE PLANE NAD 83 (CO. NORTH)
N: 1153729.84 E: 3246381.24	N: 1154074.92 E: 3246310.17	N: 1154045.99 E: 3236795.83	N: 1154045.76 E: 3236656.86
STATE PLANE NAD 27 (CO. NORTH)	STATE PLANE NAD 27 (CO. NORTH)	STATE PLANE NAD 27 (CO. NORTH)	STATE PLANE NAD 27 (CO. NORTH)
N: 153733.32 E: 2246534.56	N: 154078.39 E: 2246463.49	N: 154049.33 E: 2236949.24	N: 154049.10 E: 2236810.28



UELS, LLC
Corporate Office * 85 South 200 East
Vernal, UT 84078 * (435) 789-1017

SURVEYED BY	C.M., O.R.	09-04-18	SCALE
DRAWN BY	K.A.	09-25-18	1" = 1000'

WELL LOCATION PLAT