



Lat40°, Inc. 6250 W. 10th Street, Unit 2, Greeley, CO 970-515-5294

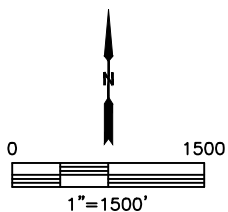
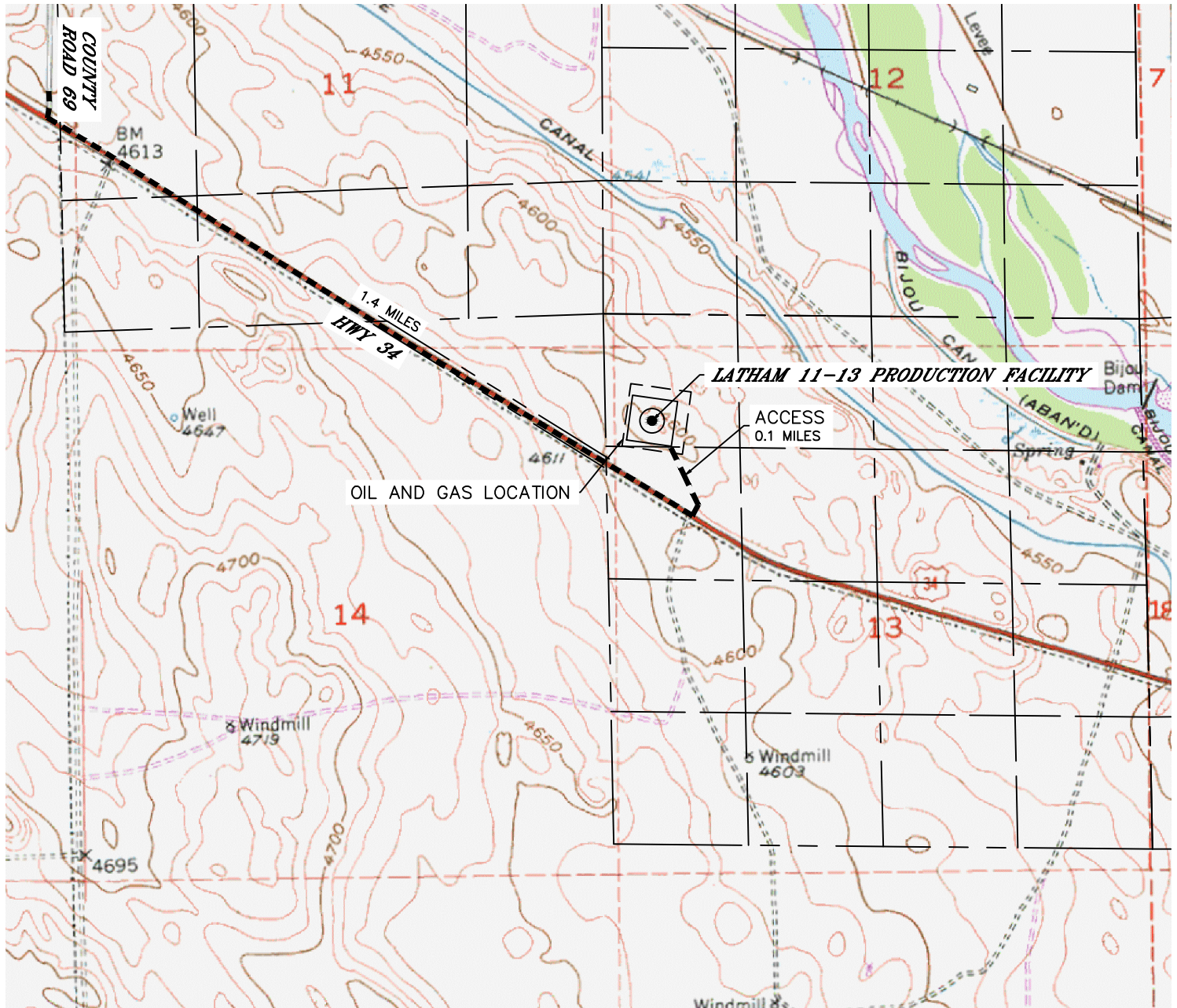
ACCESS ROAD MAP

LATHAM 11-13 PRODUCTION FACILITY

SECTION: 13
TOWNSHIP: 4N
RANGE: 63W
6TH. P.M.
WELD COUNTY, CO

DRIVING DIRECTIONS TO LATHAM 11-13 PRODUCTION FACILITY

FROM THE INTERSECTION OF COUNTY ROAD 69 AND HIGHWAY 34 DRIVE SOUTHEAST ALONG SAID HIGHWAY 34 FOR 1.4 MILES TO THE PROPOSED ACCESS ROAD, TURN LEFT ONTO THE SAID PROPOSED ACCESS ROAD AND CONTINUE NORTHWEST FOR 0.1 MILES TO THE LATHAM 11-13 PRODUCTION FACILITY ON THE NORTH SIDE OF THE ROAD.





Lat40°, Inc. 6250 W. 10th Street, Unit 2, Greeley, CO 970-515-5294

ACCESS ROAD MAP

LATHAM 11-13 PRODUCTION FACILITY

SECTION: 13
TOWNSHIP: 4N
RANGE: 63W
6TH. P.M.
WELD COUNTY, CO

