

REV: 1 10-23-18 T.S. (NAME CHANGE)

LEGEND:

PROPOSED LOCATION



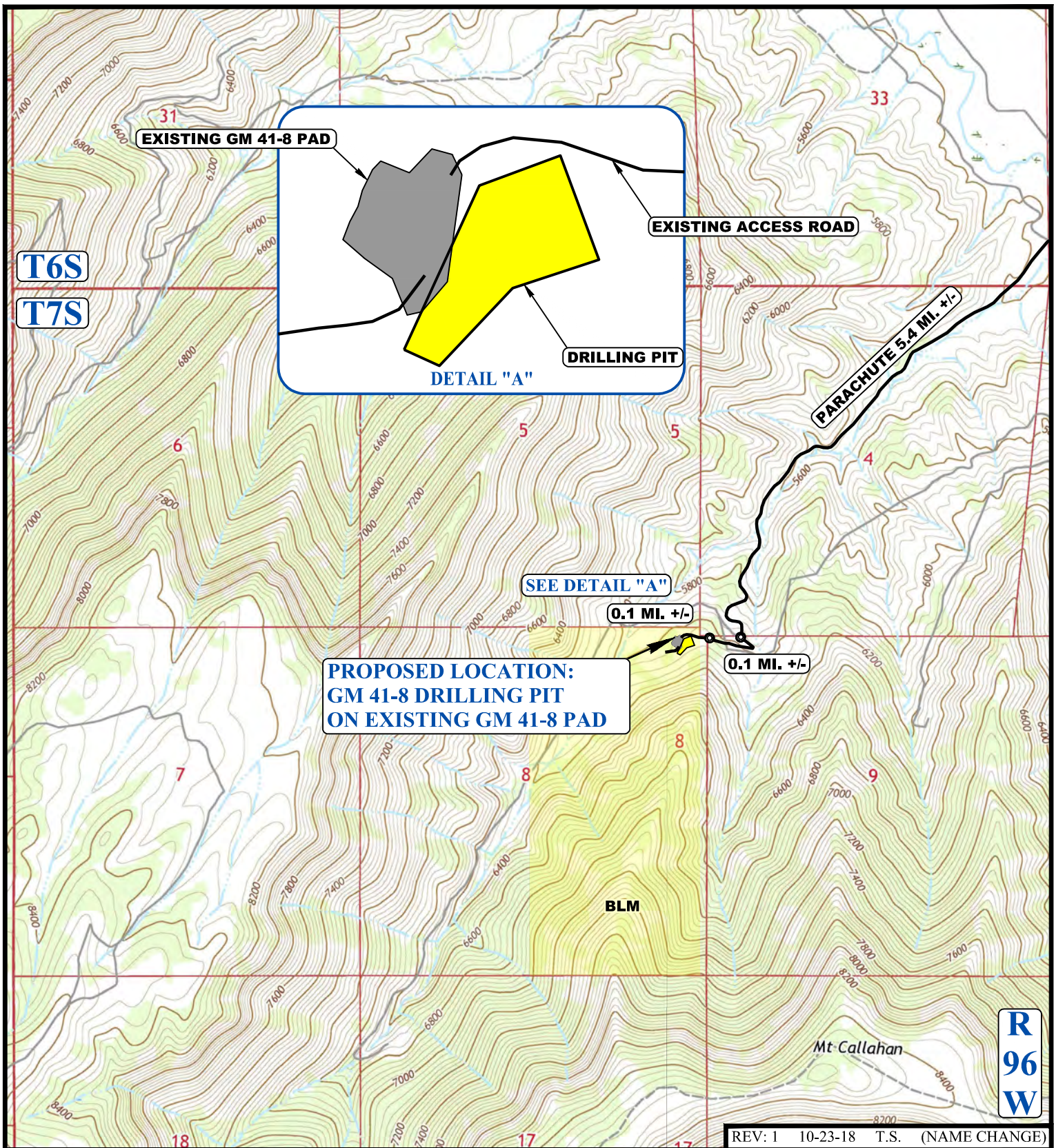
TEP Rocky Mountain LLC

**GM 41-8 DRILLING PIT
ON EXISTING GM 41-8 PAD
LOT 1, SECTION 8, T7S, R96W, 6th P.M.
GARFIELD COUNTY, COLORADO**

SURVEYED BY	MARTIN PIERCE	05-09-18	SCALE
DRAWN BY	T.L.L.	07-25-18	1 : 100,000
ACCESS ROAD MAP			PLAT #5A



UELS, LLC
Corporate Office * 85 South 200 East
Vernal, UT 84078 * (435) 789-1017



NOTE: PARCEL DATA SHOWN HAS BEEN OBTAINED FROM VARIOUS SOURCES AND SHOULD BE USED FOR MAPPING, GRAPHIC AND PLANNING PURPOSES ONLY. NO WARRANTY IS MADE BY UINTAH ENGINEERING AND LAND SURVEYING (UELS) FOR ACCURACY OF THE PARCEL DATA.

LEGEND:

— EXISTING ROAD



TEP Rocky Mountain LLC

**GM 41-8 DRILLING PIT
ON EXISTING GM 41-8 PAD
LOT 1, SECTION 8, T7S, R96W, 6th P.M.
GARFIELD COUNTY, COLORADO**

SURVEYED BY	MARTING PIERCE	05-09-18	SCALE
DRAWN BY	T.L.L.	07-25-18	1 : 24,000
ACCESS ROAD MAP			PLAT #5B



UELS, LLC
Corporate Office * 85 South 200 East
Vernal, UT 84078 * (435) 789-1017