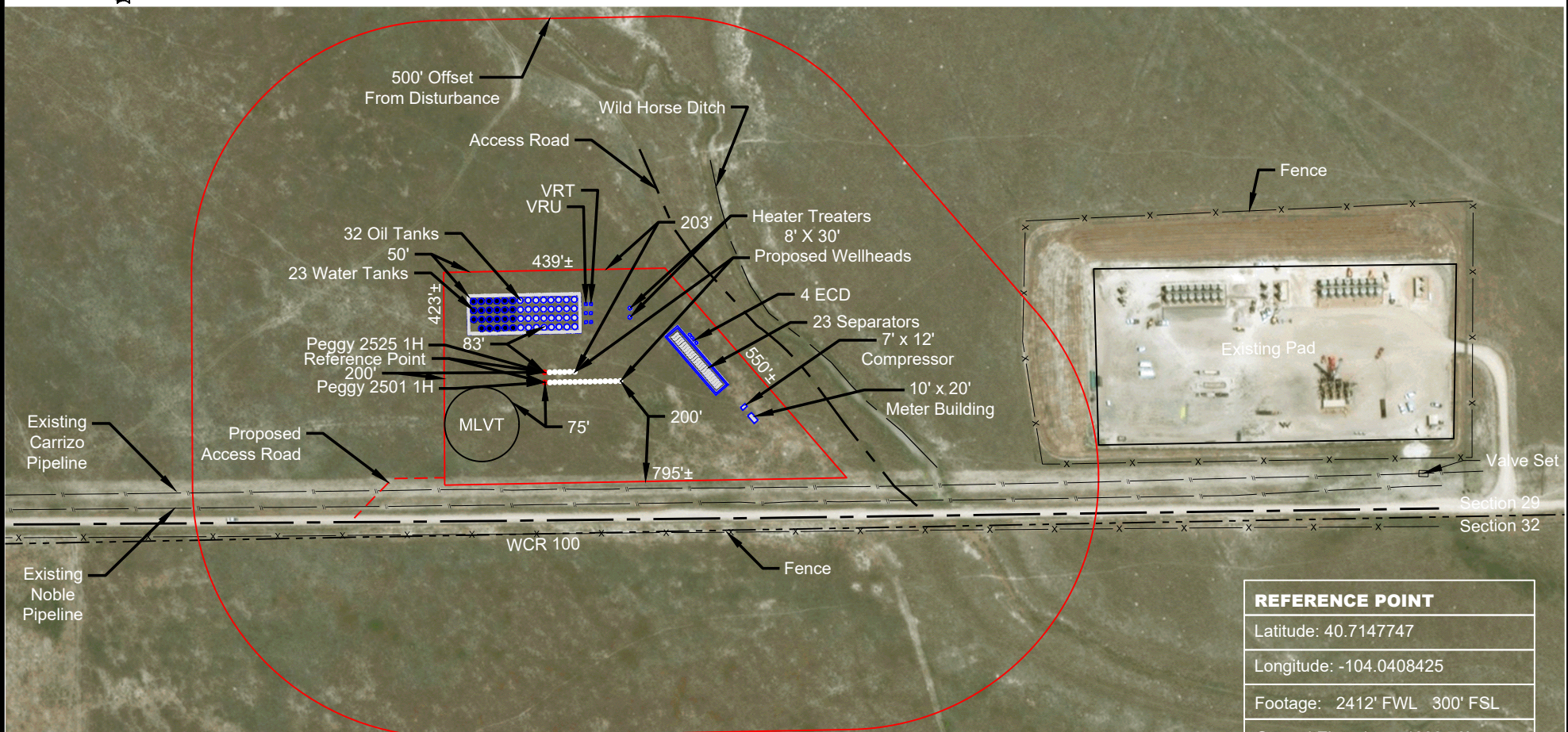


SCALE: 1" = 300'
 0' 150' 300'

LOCATION DRAWING
 SE 1/4 SW 1/4 SECTION 25
 T9N R60W 6TH PM
 WELD COUNTY, COLORADO



REFERENCE POINT
Latitude: 40.7147747
Longitude: -104.0408425
Footage: 2412' FWL 300' FSL
Ground Elevations: 4893.78'
PDOP: 1.4 Date: 02/14/2018
Instrument Operator: Michael Robertson

LAND USE:	Cultural Distances:	From Closest Well	From Production Facility Equipment
NON-CROP LAND-RANGELAND	Property Line	S 300'±	S 212'± (Meter Building)
NOXIOUS WEEDS: NO	Public Road - CR 100	S 265'±	S 212'± (Meter Building)
PAD DISTURBANCE ACREAGE:	Building	SW 2202'±	SW 2072'± (Tanks)
6.0± DRILLING OPERATIONS	Railroad	5280'±	5280'±
3.6± POST-INTERIM RECLAMATION	Powerline	SW 2357'±	SW 2226'± (Tanks)
	Water Well	SW 2166'±	SW 2048'± (Tanks)

VERDAD RESOURCES PEGGY 2501 PEGGY 2525 JOB NO. 115263 & 115953	November 2, 2018	REVISION:	
	1 OF 1	INT	DATE
	F2A_PEGGY_2501_LOC_DRAWING_R1		

NOTE:
 ALL PRODUCTION FACILITIES WILL BE ON PAD

TOPOGRAPHIC
 LOYALTY INNOVATION LEGACY
 520 Stacy Court Ste B, Lafayette, CO 80026
 303.666.0379 www.topographic.com