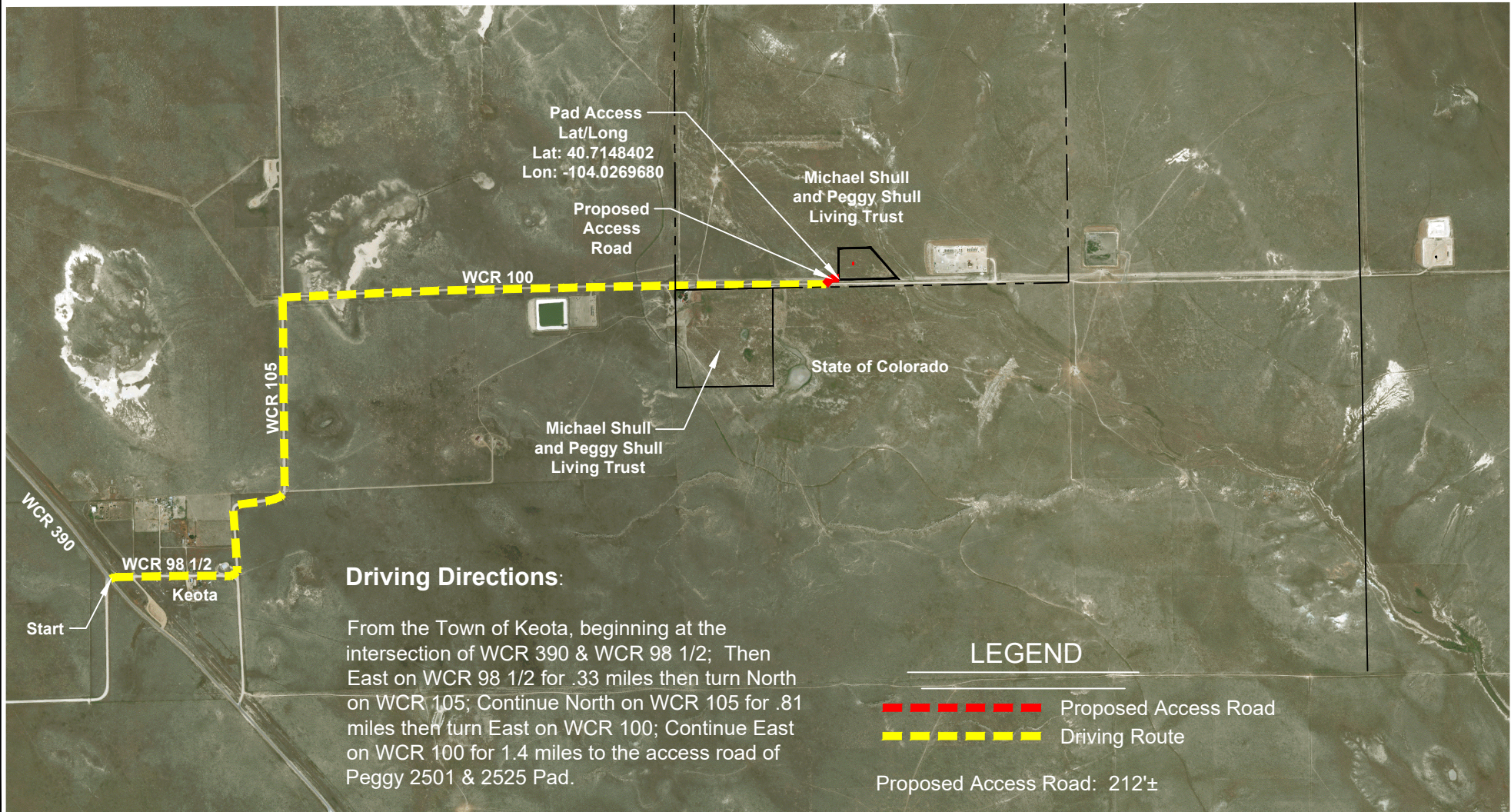


SCALE: 1" = 2000'
 0' 1000' 2000'

ACCESS ROAD MAP
 SE 1/4 SW 1/4 SECTION 25
 T9N R60W 6TH PM
 WELD COUNTY, COLORADO



Driving Directions:

From the Town of Keota, beginning at the intersection of WCR 390 & WCR 98 1/2; Then East on WCR 98 1/2 for .33 miles then turn North on WCR 105; Continue North on WCR 105 for .81 miles then turn East on WCR 100; Continue East on WCR 100 for 1.4 miles to the access road of Peggy 2501 & 2525 Pad.

LEGEND

- - - - - Proposed Access Road
- - - - - Driving Route

Proposed Access Road: 212'±

VERDAD RESOURCES PEGGY 2501 PEGGY 2525 JOB NO. 115263 & 115953	November 2, 2018	REVISION:	
	1 OF 1	INT	DATE
	F2A_PEGGY_2501_ACCESS_R1		

