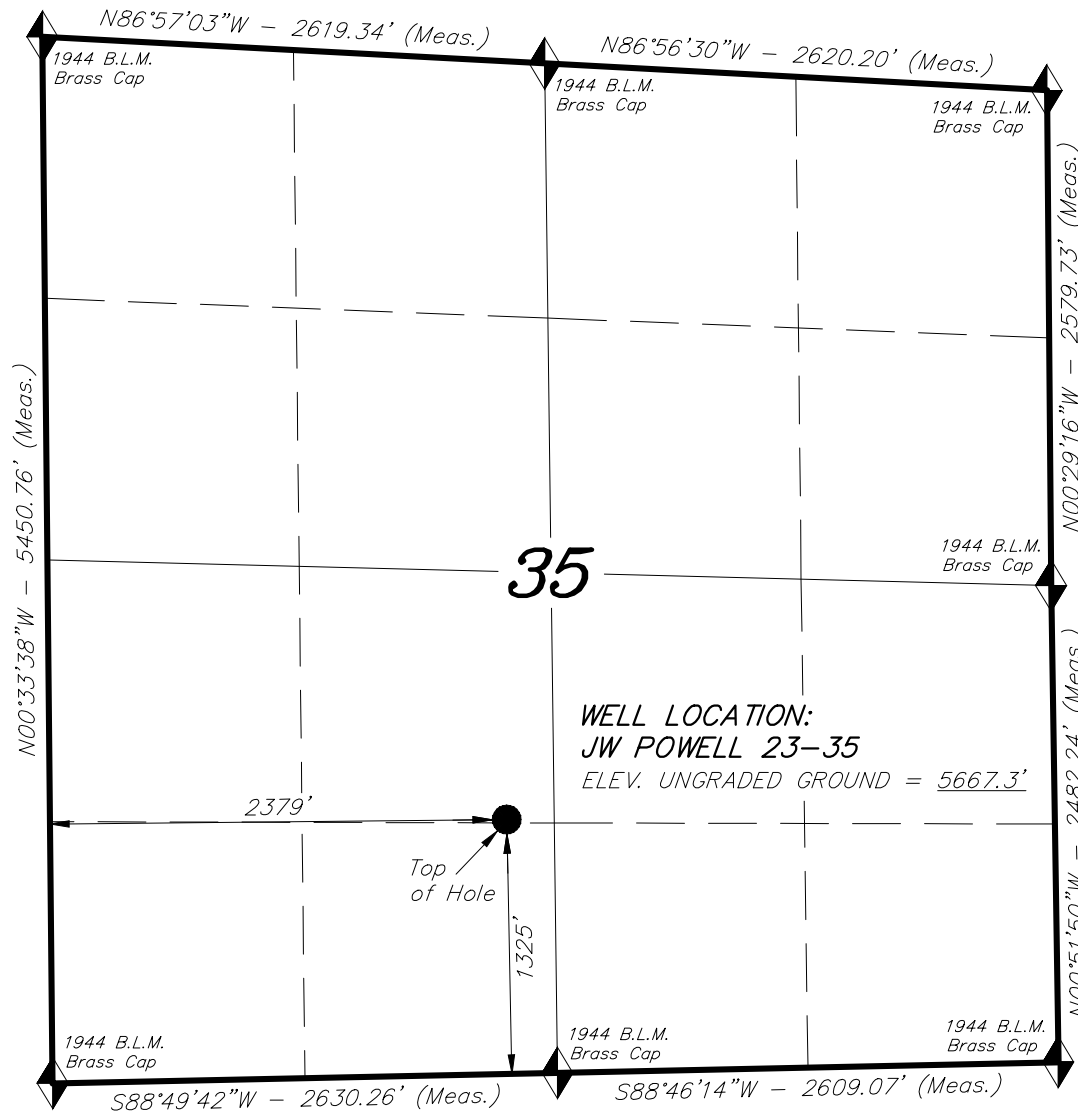
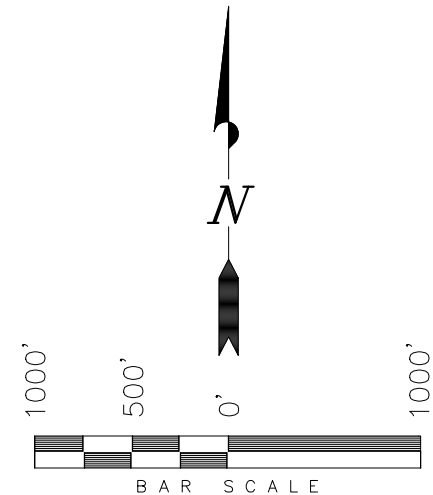


T19S, R70W, 6th P.M.

AusCo Petroleum, Inc.



WELL LOCATION, JW POWELL 23-35,
LOCATED AS SHOWN IN THE NE 1/4 SW
1/4 OF SECTION 35, T19S, R70W, 6th P.M.
FREMONT COUNTY, COLORADO.



THIS IS TO CERTIFY THAT THE ABOVE PLAT WAS
PREPARED FROM FIELD NOTES OF SURVEYS
MADE BY ME OR UNDER MY SUPERVISION. THE
LOCATION HAS BEEN STAKED IN THE FIELD AS
SHOWN ON THE PLAT, AND THAT THE SAME ARE
TRUE AND CORRECT TO THE BEST OF MY
KNOWLEDGE AND BELIEF.

45557 # 30125
REGISTERED LAND SURVEYOR
REGISTRATION # 30125
STATE OF COLORADO

NOTES:

1. Well footages are measured at right angles to the Section Lines.
2. Bearings are based on Global Positioning Satellite observations.
3. G.P.S. Operator: C. Stewart, (PDOP) = 1.7



= SECTION CORNERS LOCATED
BASIS OF ELEV; U.S.G.S.
7-1/2 min QUAD (Rockvale)

NAD 83 (SURFACE LOCATION)	
LATITUDE	= 38°20'55.10" (38.348638°)
LONGITUDE	= 105°11'26.82" (105.190784°)

TRI STATE LAND SURVEYING & CONSULTING

180 NORTH VERNAL AVE. - VERNAL, UTAH 84078
(435) 781-2501

DATE SURVEYED: 10-15-18	SURVEYED BY: C.S.
DATE DRAWN: 10-19-18	DRAWN BY: D.COX
REVISED:	SCALE: 1" = 1000'