



LWD MEMORY LOG

Gamma Ray

Scale:	Company: Noble Energy										
	Well: Hullabaloo Y21-746										
1:1200 TVD	Field: Weld										
	County: Weld										
Depth Reference:	State: Colorado										
	Country: United States										
Driller's Depth	Status:										
	Other Services:										
Final Print	Surface Location:										
	Latitude: <div>📍 🌐 🗺️ 📏</div>										
API No: 051244951	Longitude: <div>📏 📍 🌐 🗺️</div>										
	Wellbore Surveys										
Job ID: 8776777	SEC: 16 TMN: 2N RGE: 64W										
Permanent Datum (P.D.): Ground Level	Elevation: 4944.00 ft										
	Elev. KB: N/A										
Log Measured From: Rig Floor	Above P.D. 30.00 ft										
	Elev. DF: 4974.00 ft										
Dates	Interval Logged										
	Magnetic Field Reference										
Date From: 2017-09-26	Top: (ft) 2033.00										
	Azi Reference North: Grid										
Date To: 2017-09-29	Bottom: (ft) 17204.00										
	Dip Angle: (deg) 66.66										
Spud Date: 2017-09-25	Total Magnetic Field Strength: (nT) 52271										
	Mag to Reference North Correction: (deg) 7.45 E										
Borehole Record											
Casing Record											
Hole Size (in)	From (ft)	To (ft)	Size (in)	Weight (lb/ft)	From (ft)	To (ft)					
8.500	2033.00	17204.00	9.625	36.00	30.00	2023.00					
Mud Record											
Deviation Record											
Type	From (ft)	To (ft)	Hole Size (in)	Interval (ft)	Inc Az (Start)	Inc Az (End)					
Oil Based Mud	30.00	17204.16	8.500	151771.00	0.52 198.53	89.94 179.76					
Acquisition System											
Software Version											
Baker Hughes Cadence	RT4.1	Rig: H&P 524	Contractor: Helmerich & Payne Drilling Co								
PlotStudio	4.1.7763.3	District: RMD	Unit: D&E								

"These interpretations and analyses ("Interpretations") are opinions provided by Baker Hughes Oilfield Operations, Inc ("Baker Hughes"), based upon industry practice, empirical relationships, assumptions and measurements, (many of which may be provided by the customer). The Interpretations are not infallible and may be subject to different opinions.

Vjwu. "Dcmgt"JwiJgu"fggu"pqv"ycttcpv"vjgkt"ceewtce{. "eqttgevpguu. "qt"eqorngvgpguu. "qt"vjcv"vjg"ewuvqogtøu"cpflqt"cp{" "vjktf"rctv{øu"tgnkcpeg"qp"uwej"Kpvgtrtgvcvkqpu"yknn"ceeqornkuj"cp{"rctvkewnct"tguwnvu0"Vjg"ewuvqogt"cuuwogu"hwnn"

responsibility for the use of the Interpretations and for decisions based thereon and the customer agrees to release, defend and indemnify Baker Hughes, its parent, subsidiaries and affiliated or related entities, and subcontractors, together with its and their officers, directors, employees, agents and invitees against, any and all claims, losses, damages, or expenses sustained by the customer or any third party arising out of reliance upon or use of the Interpretations, without regard to the cause(s) thereof, including without limitation any form of negligence on the part of Baker Hughes. Unless other contract terms have been agreed to by the parties, each party's liabilities and qdnkicvkqpu"ujcnn"dg"iqxgtpgf"d{"Dcmgt"JwiJgu"Kpeqtrqtcvgføu"Yqtnfykfg"Vgtou"cpf"Eqpfkvkqpu0\$""

Log Run Summary

Run No	Bit Run No.	Bit Size (in)	Bit Type	Bit Gauge Length (in)	Assembly Type	Logged Interval		Bit Depth Interval		Date / Time		Circ. Hours (h)
						Top	Bottom	From	To	Start Logging	End Logging	
						(ft)	(ft)	(ft)	(ft)			
1	1	8.500	PDC	2.00	AutoTrak Curve	2021.00	17192.00	2033.00	17204.00	2017-09-26 15:31	2017-09-29 06:07	56.30

Crew

Name	Arrive Wellsite	Depart Wellsite	Name	Arrive Wellsite	Depart Wellsite	Name	Arrive Wellsite	Depart Wellsite
Steven Cano	2017-09-25	2017-09-29	TY Jackson	2017-09-25	2017-09-29			

Mud Properties Record

Date / Time	Run No.	Measured Depth (ft)	Mud Type	Density (ppg)	Viscosity (cP)	pH	Fluid Loss (cm3)	Oil / Water	Source	Total Chlorides (ppm)	K+ (%)
2017-09-26 05:04	1	2500.00	Oil Based Mud	9.2	8	N/A	17.0	82/18	Active Pit	28500	0.00
2017-09-27 10:01	1	6404.00	Oil Based Mud	9.3	9	N/A	16.0	83/17	Active Pit	29000	0.00
2017-09-28 16:30	1	14135.00	Oil Based Mud	9.2	8	N/A	16.0	85/15	Active Pit	30000	0.00

Equipment and Service Data

Run	Tool	Serial	Measurement	Sensor	Bit	Max	Min
-----	------	--------	-------------	--------	-----	-----	-----

No.		Number		Offset (ft)	Offset (ft)	O.D. (in)	I.D. (in)
1	ATC_SU	14127486	Near Bit VSS	5.93	6.76	7.000	4.330
1	ATC_SU	14127486	Near Bit Inclination	5.93	6.76	7.000	4.330
1	ATC_MWD	12603327	Gamma (single)	2.76	12.94	7.000	3.250
1	ATC_MWD	12603327	Directional (mag)	12.27	22.45	7.000	3.250

Service and Tool Mnemonics

Mnemonic	Name	Description
ATC_SU	ATC_SU	Auto Trak Curve Steering Unit
ATC_MWD	ATC_MWD	Auto Trak Curve MWD
ATC_LCPM	ATC_LCPM	Auto Trak Curve LCPM

Comments


1	Depth measurements were obtained from a depth control system not supplied or operated by Baker Hughes. Due to lack of control by Baker Hughes, depth calibrations and measurements could not be independently verified.
2	Baker Hughes LWD run 1 utilized a 6.75 inch Navigamma service (Gamma Ray and Directional) behind a 8 1/2 inch bit and rotary steerable from 2033 to 17204 feet MD (2033 to 6980 feet TVD).
3	Periodic gaps in the gamma data are due to memory module issue and drilling ahead while downlinking.

Remarks

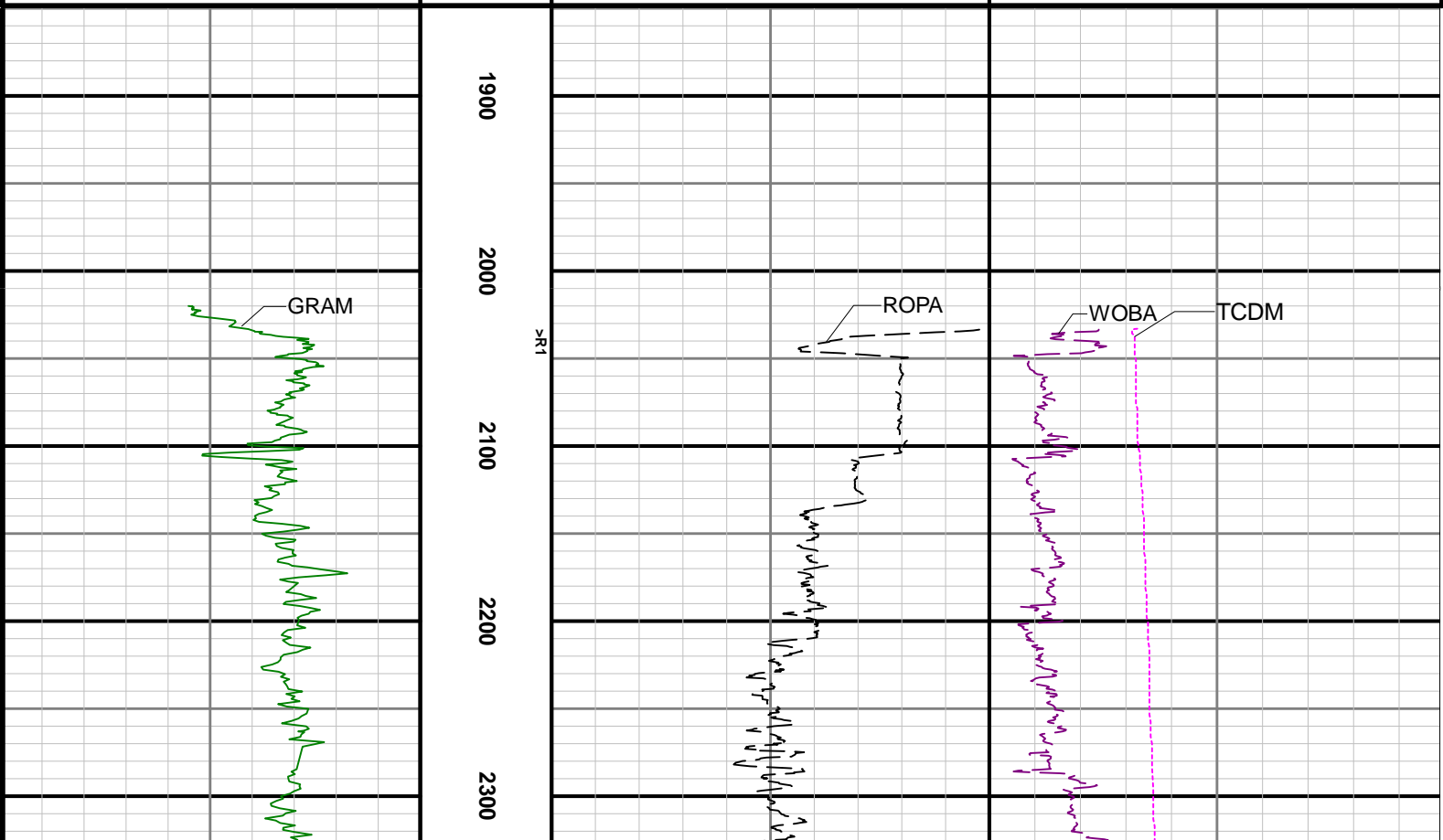
Number	Measured Depth (ft)	Hole Section (in)	Run No.	Remark

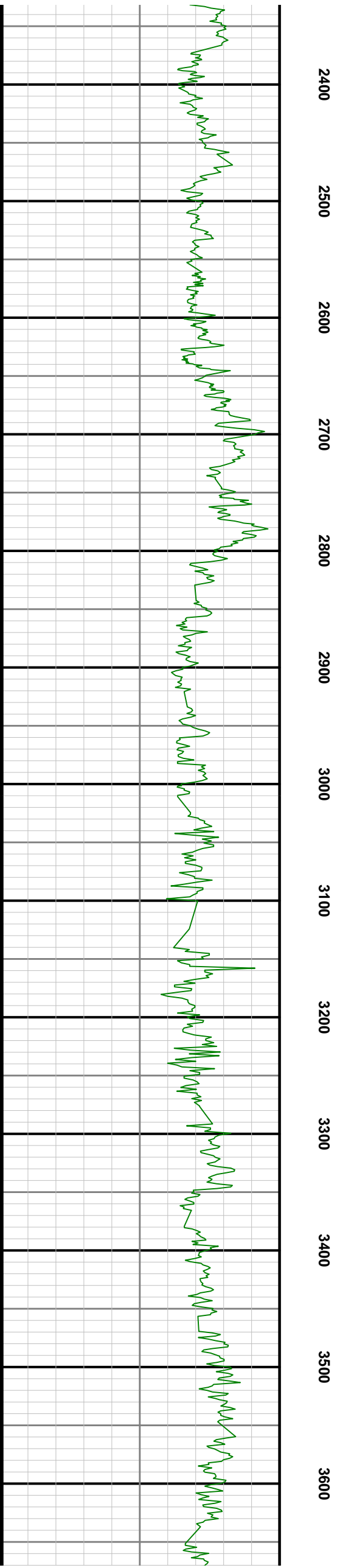
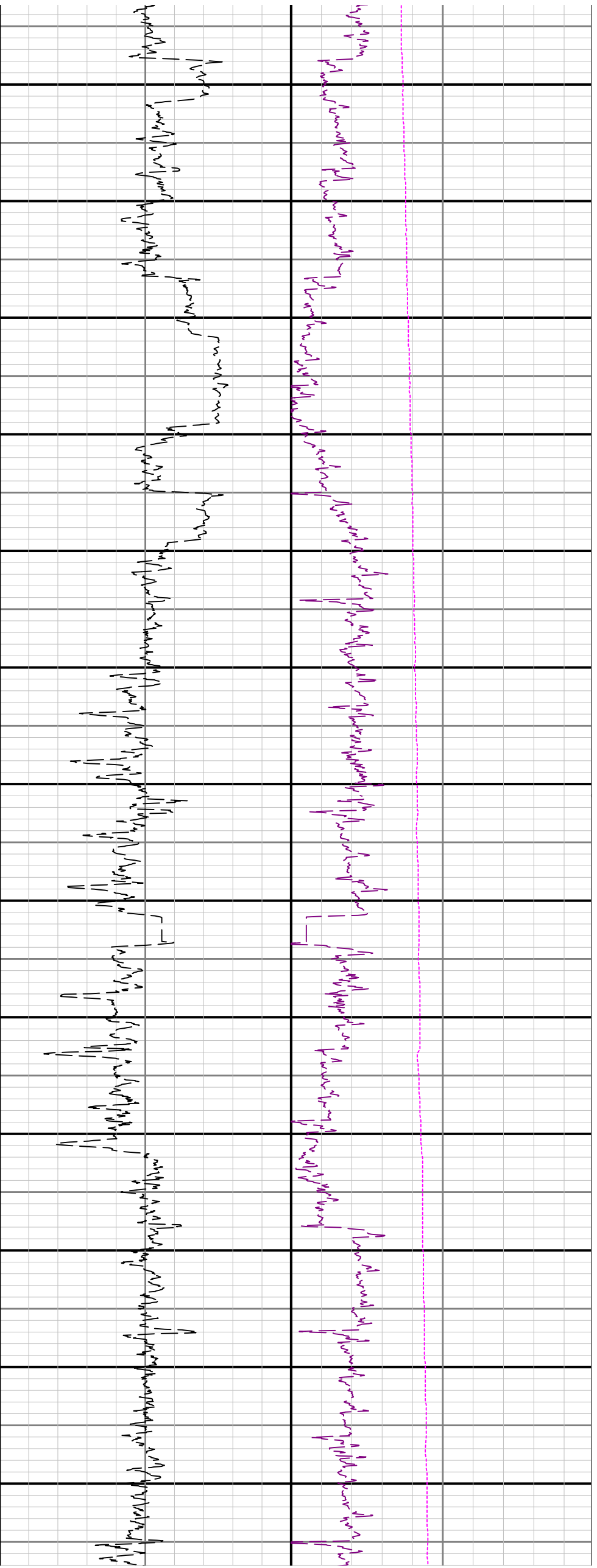
Curve Mnemonics

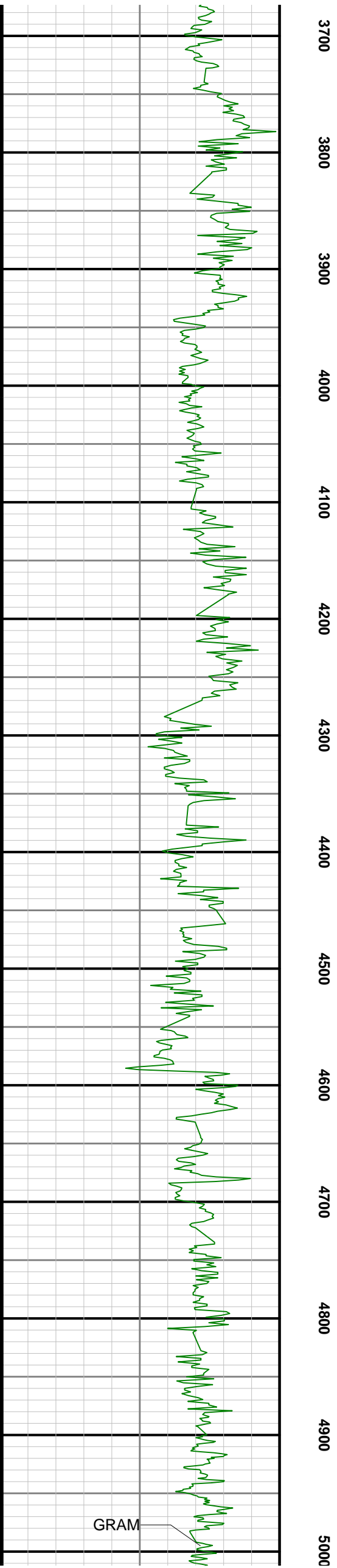
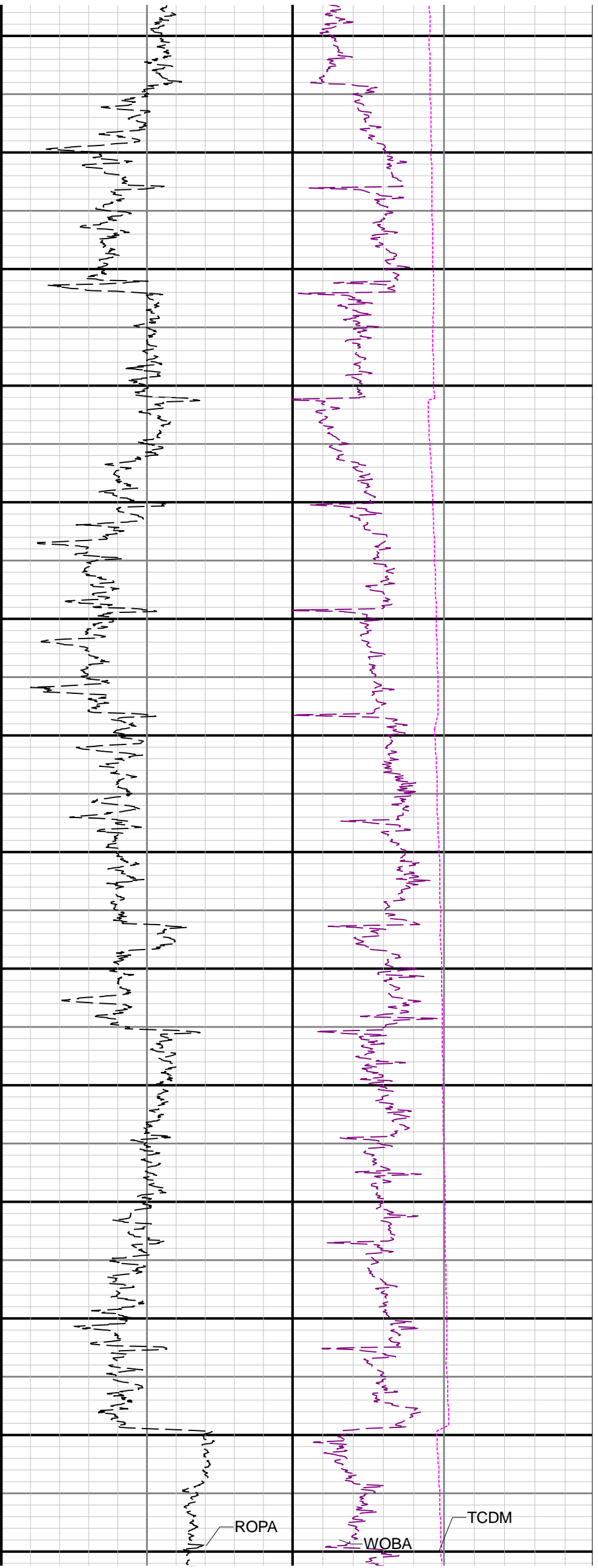
Presented Curves	Description	Units
ROPA	Depth Averaged ROP 3 ft Average	ft/h
WOBA	Weight On Bit, Average 1 ft Average	klb
GRAM	OnTrak - Gamma Ray - Apparent - Memory 3 ft Average	API
TCDM	Downhole Temperature	degF

	Company	Noble Energy			
	Well	Hullabaloo Y21-746			
	Interval	Date From:	2017-09-26 09:31:06	Top:	2021.00
	Created	Date To:	2017-09-29 00:05:40	Bottom:	17204.00

Gamma Ray - Apparent 3 ft Average GRAM	TVD 1:1200 feet	Depth Averaged ROP 3 ft Average ROPA	Weight On Bit, Average 1 ft Average WOBA
0150		10000ft/h	050klb
API			Downhole Temperature TCDM
			0300degF







		1309.00	0.57	124.19	N/A	-4.07	3.94	1308.97	-3665.03	3.56	94.00	0.29	-0.18	-19.91
		1403.00	0.22	85.90	N/A	-4.32	4.51	1402.97	-3571.03	3.74	94.00	0.45	-0.37	-40.73
		1498.00	0.05	270.95	N/A	-4.30	4.65	1497.96	-3476.04	3.71	95.00	0.28	-0.18	-184.16
		1593.00	0.13	327.49	N/A	-4.21	4.55	1592.96	-3381.04	3.63	95.00	0.12	0.08	59.52
		1687.00	0.08	279.93	N/A	-4.11	4.42	1686.96	-3287.04	3.54	94.00	0.10	-0.05	-50.60
		1782.00	0.31	344.48	N/A	-3.85	4.29	1781.96	-3192.04	3.30	95.00	0.30	0.24	67.95
		1876.00	0.57	19.06	N/A	-3.17	4.37	1875.96	-3098.04	2.61	94.00	0.38	0.28	36.79
		1971.00	0.44	11.78	N/A	-2.36	4.60	1970.96	-3003.04	1.78	95.00	0.15	-0.14	-7.66
		2016.00	0.38	2.19	N/A	-2.04	4.64	2015.96	-2958.04	1.46	45.00	0.20	-0.13	-21.31
		2075.00	0.85	279.39	N/A	-1.78	4.22	2074.95	-2899.05	1.25	59.00	1.50	0.80	-140.34
		2170.00	3.87	267.90	N/A	-1.78	0.32	2169.86	-2804.14	1.73	95.00	3.20	3.18	-12.09
		2264.00	6.09	268.57	N/A	-2.02	-7.84	2263.50	-2710.50	2.96	94.00	2.36	2.36	0.71
		2358.00	7.86	267.60	N/A	-2.41	-19.24	2356.80	-2617.20	4.73	94.00	1.89	1.88	-1.03
		2453.00	9.97	269.84	N/A	-2.71	-33.96	2450.65	-2523.35	6.81	95.00	2.25	2.22	2.36
		2548.00	11.30	274.50	N/A	-2.00	-51.46	2544.02	-2429.98	8.24	95.00	1.67	1.40	4.91
		2642.00	12.61	278.18	N/A	0.18	-70.80	2635.98	-2338.02	8.42	94.00	1.61	1.39	3.91
		2737.00	14.54	280.50	N/A	3.83	-92.79	2728.32	-2245.68	7.47	95.00	2.11	2.03	2.44
		2831.00	16.78	285.23	N/A	9.55	-117.49	2818.83	-2155.17	4.80	94.00	2.74	2.38	5.03
		2926.00	17.17	287.64	N/A	17.40	-144.09	2909.69	-2064.31	0.24	95.00	0.85	0.41	2.54
		3021.00	17.30	288.33	N/A	26.09	-170.86	3000.43	-1973.57	-5.13	95.00	0.26	0.14	0.73
		3115.00	17.46	288.74	N/A	35.02	-197.48	3090.13	-1883.87	-10.76	94.00	0.21	0.17	0.44
		3210.00	17.34	288.63	N/A	44.12	-224.39	3180.79	-1793.21	-16.52	95.00	0.13	-0.13	-0.12
		3304.00	17.69	290.05	N/A	53.49	-251.08	3270.43	-1703.57	-22.58	94.00	0.59	0.37	1.51
		3399.00	17.81	292.14	N/A	63.91	-278.10	3360.91	-1613.09	-29.64	95.00	0.68	0.13	2.20
		3493.00	17.63	290.52	N/A	74.32	-304.74	3450.45	-1523.55	-36.74	94.00	0.56	-0.19	-1.72
		3588.00	17.82	288.74	N/A	84.03	-331.98	3540.94	-1433.06	-43.07	95.00	0.60	0.20	-1.87
		3683.00	17.67	288.26	N/A	93.22	-359.44	3631.42	-1342.58	-48.85	95.00	0.22	-0.16	-0.51
		3777.00	17.68	285.71	N/A	101.56	-386.73	3720.98	-1253.02	-53.81	94.00	0.82	0.01	-2.71
		3872.00	17.94	281.68	N/A	108.42	-414.95	3811.43	-1162.57	-57.20	95.00	1.33	0.27	-4.24
		3966.00	17.75	276.36	N/A	112.94	-443.37	3900.92	-1073.08	-58.23	94.00	1.75	-0.20	-5.66
		4061.00	17.87	272.06	N/A	115.07	-472.33	3991.37	-982.63	-56.82	95.00	1.39	0.13	-4.53
		4155.00	17.95	273.71	N/A	116.53	-501.19	4080.81	-893.19	-54.76	94.00	0.55	0.09	1.76
		4250.00	17.80	276.66	N/A	119.16	-530.22	4171.23	-802.77	-53.84	95.00	0.97	-0.16	3.11
		4345.00	17.80	280.45	N/A	123.48	-558.93	4261.69	-712.31	-54.64	95.00	1.22	0.00	3.99
		4439.00	17.98	282.81	N/A	129.30	-587.20	4351.14	-622.86	-56.98	94.00	0.79	0.19	2.51
		4534.00	17.18	283.75	N/A	135.88	-615.13	4441.70	-532.30	-60.12	95.00	0.89	-0.84	0.99
		4628.00	17.26	285.47	N/A	142.90	-642.06	4531.49	-442.51	-63.82	94.00	0.55	0.09	1.83
		4724.00	17.01	285.00	N/A	150.34	-669.35	4623.23	-350.77	-67.88	96.00	0.30	-0.26	-0.49
		4818.00	17.13	282.61	N/A	156.92	-696.14	4713.09	-260.91	-71.16	94.00	0.76	0.13	-2.54
		4913.00	17.02	279.82	N/A	162.34	-723.49	4803.90	-170.10	-73.22	95.00	0.87	-0.12	-2.94
		5007.00	17.00	276.91	N/A	166.34	-750.69	4893.79	-80.21	-73.88	94.00	0.91	-0.02	-3.10
		5102.00	17.10	274.62	N/A	169.14	-778.40	4984.62	10.62	-73.29	95.00	0.71	0.11	-2.41
		5196.00	17.01	272.31	N/A	170.81	-805.91	5074.49	100.49	-71.60	94.00	0.73	-0.10	-2.46
		5291.00	17.09	273.07	N/A	172.11	-833.73	5165.31	191.31	-69.52	95.00	0.25	0.08	0.80
		5385.00	17.05	274.74	N/A	173.99	-861.26	5255.17	281.17	-68.04	94.00	0.52	-0.04	1.78
		5480.00	17.00	275.72	N/A	176.53	-888.96	5346.01	372.01	-67.19	95.00	0.31	-0.05	1.03
		5575.00	17.13	276.88	N/A	179.59	-916.67	5436.83	462.83	-66.86	95.00	0.38	0.14	1.22
		5669.00	17.00	276.22	N/A	182.73	-944.07	5526.69	552.69	-66.65	94.00	0.25	-0.14	-0.70
		5764.00	17.00	276.14	N/A	185.72	-971.68	5617.54	643.54	-66.27	95.00	0.02	0.00	-0.08
		5858.00	17.55	276.63	N/A	188.83	-999.42	5707.30	733.30	-65.98	94.00	0.61	0.59	0.52
		5952.00	17.58	277.91	N/A	192.42	-1027.56	5796.91	822.91	-66.12	94.00	0.41	0.03	1.36
		6047.00	17.46	280.59	N/A	197.01	-1055.78	5887.51	913.51	-67.25	95.00	0.86	-0.13	2.82
		6141.00	17.47	281.85	N/A	202.50	-1083.45	5977.17	1003.17	-69.34	94.00	0.40	0.01	1.34
		6236.00	17.33	281.23	N/A	208.19	-1111.29	6067.83	1093.83	-71.60	95.00	0.24	-0.15	-0.65
		6331.00	17.48	281.15	N/A	213.70	-1139.16	6158.48	1184.48	-73.68	95.00	0.16	0.16	-0.08
		6425.00	17.16	279.95	N/A	218.83	-1166.67	6248.22	1274.22	-75.43	94.00	0.51	-0.34	-1.28
		6520.00	16.71	266.85	N/A	220.50	-1194.12	6339.13	1365.13	-73.75	95.00	4.04	-0.47	-13.79
		6614.00	16.75	238.71	N/A	212.71	-1219.23	6429.30	1455.30	-62.97	94.00	8.54	0.04	-29.94
		6710.00	20.87	210.81	N/A	190.78	-1239.86	6520.33	1546.33	-38.70	96.00	10.18	4.29	-29.06
		6804.00	26.97	209.25	N/A	157.78	-1258.87	6606.22	1632.22	-3.62	94.00	6.52	6.49	-1.66
		6899.00	33.97	208.54	N/A	115.61	-1282.11	6688.05	1714.05	41.05	95.00	7.38	7.37	-0.75
		6993.00	42.39	202.49	N/A	63.15	-1306.83	6761.90	1787.90	96.13	94.00	9.79	8.96	-6.44
		7088.00	49.72	199.07	N/A	-0.78	-1330.96	6827.79	1853.79	162.52	95.00	8.14	7.72	-3.60
		7182.00	54.54	192.63	N/A	-72.12	-1351.07	6885.52	1911.52	235.77	94.00	7.45	5.13	-6.85
		7277.00	60.92	187.09	N/A	-151.19	-1364.67	6936.24	1962.24	315.91	95.00	8.33	6.72	-5.83
		7371.00	69.72	184.43	N/A	-236.08	-1373.16	6975.46	2001.46	401.21	94.00	9.71	9.36	-2.83
		7466.00	77.40	181.92	N/A	-326.99	-1378.17	7002.33	2028.33	492.04	95.00	8.47	8.08	-2.64
		7560.00	86.12	181.14	N/A	-419.89	-1380.64	7015.79	2041.79	584.56	94.00	9.31	9.28	-0.83
		7655.00	90.43	181.12	N/A	-514.81	-1382.51	7018.65	2044.65	679.00	95.00	4.54	4.54	-0.02
		7750.00	90.37	180.72	N/A	-609.79	-1384.04	7017.98	2043.98	773.47	95.00	0.43	-0.06	-0.42
		7844.00	90.52	178.90	N/A	-703.79	-1383.73	7017.25	2043.25	866.73	94.00	1.94	0.16	-1.94
		7938.00	90.40	177.90	N/A	-797.75	-1381.10	7016.50	2042.50	959.67	94.00	1.07	-0.13	-1.06
		8033.00	90.31	179.36	N/A	-892.71	-1378.83	7015.91	2041.91	1053.66	95.00	1.54	-0.09	1.54
		8128.00	90.34	179.23	N/A	-987.71	-1377.66	7015.37	2041.37	1147.80	95.00	0.14	0.03	-0.14
		8222.00	90.43	181.54	N/A	-1081.70	-1378.29	7014.74	2040.74	1241.17	94.00	2.46	0.10	2.46
		8317.00	90.25	181.75	N/A	-1176.65	-1381.02	7014.17	2040.17	1335.76	95.00	0.29	-0.19	0.22
		8411.00	90.15	178.94	N/A	-1270.64	-1381.59	7013.85	2039.85	1429.12	94.00	2.99	-0.11	-2.99
		8506.00	90.22	177.95	N/A	-1365.61	-1379.01	7013.54	2039.54	1523.07	95.00	1.04	0.07	-1.04
		8600.00	90.55	174.63	N/A	-1459.39	-1372.93	7012.91	2038.91	1615.42	94.00	3.55	0.35	-3.53
		8695.00	90.37	175.42	N/A	-1554.03	-1364.69	7012.14	2038.14	1708.36	95.00	0.85	-0.19	0.83
		8789.00	90.49	176.52	N/A	-1647.80	-1358.08	7011.44	2037.44	1800.62	94.00	1.18	0.13	1.17
		8884.00	90.46	179.47	N/A	-1742.72	-1354.76	7010.65	2036.65	1894.44	95.00	3.11	-0.03	3.11
		8978.00	90.55	180.69	N/A	-1836.72	-1354.89	7009.82	2035.82	1987.76	94.00	1.30	0.10	1.30
		9073.00	90.31	180.90	N/A	-1931.71	-1356.21	7009.11	2035.11	2082.20	95.00	0.34	-0.25	0.22
		9168.00	90.37	180.64	N/A	-2026.70	-1357.49	7008.55	2034.55	2176.64	95.00	0.28	0.06	-0.27
		9262.00	90.37	181.12	N/A	-2120.68	-1358.93	7007.94	2033.94	2270.11	94.00	0.51	0.00	0.51
		9												

	9641.00	90.46	177.21	N/A	-2499.58	-1360.15	7005.72	2031.72	2646.34	95.00	2.12	0.19	-2.12
	9736.00	90.49	176.01	N/A	-2594.41	-1354.53	7004.93	2030.93	2739.79	95.00	1.26	0.03	-1.26
	9830.00	90.25	175.78	N/A	-2688.17	-1347.80	7004.32	2030.32	2832.03	94.00	0.35	-0.26	-0.24
	9924.00	90.52	176.11	N/A	-2781.93	-1341.15	7003.69	2029.69	2924.29	94.00	0.45	0.29	0.35
	10019.00	90.40	177.34	N/A	-2876.77	-1335.73	7002.93	2028.93	3017.77	95.00	1.30	-0.13	1.29
	10114.00	90.43	178.20	N/A	-2971.69	-1332.03	7002.24	2028.24	3111.54	95.00	0.91	0.03	0.91
	10209.00	90.25	179.02	N/A	-3066.66	-1329.73	7001.67	2027.67	3205.53	95.00	0.88	-0.19	0.86
	10303.00	90.43	180.13	N/A	-3160.66	-1329.03	7001.12	2027.12	3298.74	94.00	1.20	0.19	1.18
	10398.00	90.31	181.69	N/A	-3255.64	-1330.54	7000.50	2026.50	3393.20	95.00	1.65	-0.13	1.64
	10493.00	90.25	182.36	N/A	-3350.58	-1333.89	7000.04	2026.04	3487.84	95.00	0.71	-0.06	0.71
	10587.00	90.31	180.63	N/A	-3444.54	-1336.35	6999.58	2025.58	3581.41	94.00	1.84	0.06	-1.84
	10678.00	90.55	182.15	N/A	-3535.51	-1338.55	6998.90	2024.90	3671.97	91.00	1.69	0.26	1.67
	10815.00	90.22	181.79	N/A	-3672.42	-1343.26	6997.98	2023.98	3808.44	137.00	0.36	-0.24	-0.26
	10909.00	90.46	179.90	N/A	-3766.41	-1344.65	6997.42	2023.42	3901.90	94.00	2.03	0.26	-2.01
	11004.00	90.46	179.04	N/A	-3861.40	-1343.77	6996.66	2022.66	3996.08	95.00	0.91	0.00	-0.91
	11098.00	90.52	181.04	N/A	-3955.39	-1343.84	6995.85	2021.85	4089.38	94.00	2.13	0.06	2.13
	11193.00	90.37	179.68	N/A	-4050.39	-1344.43	6995.11	2021.11	4183.75	95.00	1.44	-0.16	-1.43
	11287.00	90.34	178.27	N/A	-4144.37	-1342.75	6994.53	2020.53	4276.83	94.00	1.50	-0.03	-1.50
	11382.00	90.28	178.16	N/A	-4239.32	-1339.79	6994.02	2020.02	4370.71	95.00	0.13	-0.06	-0.12
	11477.00	90.37	178.02	N/A	-4334.26	-1336.63	6993.48	2019.48	4464.57	95.00	0.18	0.09	-0.15
	11571.00	90.34	177.00	N/A	-4428.17	-1332.54	6992.90	2018.90	4557.29	94.00	1.09	-0.03	-1.09
	11665.00	90.34	175.88	N/A	-4521.99	-1326.71	6992.34	2018.34	4649.70	94.00	1.19	0.00	-1.19
	11760.00	90.34	176.10	N/A	-4616.75	-1320.06	6991.77	2017.77	4742.96	95.00	0.23	0.00	0.23
	11854.00	90.25	176.81	N/A	-4710.57	-1314.25	6991.29	2017.29	4835.37	94.00	0.76	-0.10	0.76
	11949.00	90.43	177.32	N/A	-4805.45	-1309.39	6990.73	2016.73	4928.95	95.00	0.57	0.19	0.54
	12044.00	90.40	178.45	N/A	-4900.38	-1305.88	6990.04	2016.04	5022.75	95.00	1.19	-0.03	1.19
	12138.00	90.25	179.96	N/A	-4994.36	-1304.58	6989.51	2015.51	5115.88	94.00	1.61	-0.16	1.61
	12233.00	90.37	179.82	N/A	-5089.36	-1304.39	6988.99	2014.99	5210.16	95.00	0.19	0.13	-0.15
	12328.00	90.49	182.32	N/A	-5184.33	-1306.17	6988.28	2014.28	5304.64	95.00	2.63	0.13	2.63
	12422.00	90.37	181.10	N/A	-5278.29	-1308.97	6987.57	2013.57	5398.24	94.00	1.30	-0.13	-1.30
	12517.00	90.37	178.46	N/A	-5373.28	-1308.61	6986.96	2012.96	5492.48	95.00	2.78	0.00	-2.78
	12612.00	90.43	180.50	N/A	-5468.27	-1307.75	6986.30	2012.30	5586.66	95.00	2.15	0.06	2.15
	12706.00	90.34	178.02	N/A	-5562.25	-1306.53	6985.66	2011.66	5679.80	94.00	2.64	-0.10	-2.64
	12801.00	90.28	177.74	N/A	-5657.18	-1303.02	6985.15	2011.15	5773.60	95.00	0.30	-0.06	-0.29
	12895.00	90.31	177.83	N/A	-5751.11	-1299.38	6984.67	2010.67	5866.39	94.00	0.10	0.03	0.10
	12990.00	90.37	177.53	N/A	-5846.03	-1295.54	6984.10	2010.10	5960.14	95.00	0.32	0.06	-0.32
	13084.00	90.28	176.83	N/A	-5939.92	-1290.91	6983.57	2009.57	6052.77	94.00	0.75	-0.10	-0.74
	13179.00	90.22	175.62	N/A	-6034.71	-1284.66	6983.15	2009.15	6146.10	95.00	1.28	-0.06	-1.27
	13274.00	90.34	176.21	N/A	-6129.46	-1277.89	6982.69	2008.69	6239.33	95.00	0.63	0.13	0.62
	13368.00	90.40	177.44	N/A	-6223.32	-1272.69	6982.08	2008.08	6331.85	94.00	1.31	0.06	1.31
	13463.00	90.34	178.59	N/A	-6318.26	-1269.40	6981.47	2007.47	6425.69	95.00	1.21	-0.06	1.21
	13558.00	90.28	180.04	N/A	-6413.24	-1268.26	6980.96	2006.96	6519.84	95.00	1.53	-0.06	1.53
	13652.00	90.43	180.04	N/A	-6507.24	-1268.33	6980.37	2006.37	6613.15	94.00	0.16	0.16	0.00
	13747.00	90.40	179.65	N/A	-6602.24	-1268.07	6979.69	2005.69	6707.41	95.00	0.41	-0.03	-0.41
	13842.00	90.09	178.95	N/A	-6697.23	-1266.91	6979.28	2005.28	6801.55	95.00	0.81	-0.33	-0.74
	13936.00	90.12	177.93	N/A	-6791.19	-1264.35	6979.11	2005.11	6894.51	94.00	1.09	0.03	-1.09
	14031.00	89.94	177.87	N/A	-6886.13	-1260.87	6979.06	2005.06	6988.32	95.00	0.20	-0.19	-0.06
	14125.00	89.94	178.76	N/A	-6980.09	-1258.10	6979.16	2005.16	7081.25	94.00	0.95	0.00	0.95
	14220.00	89.97	179.66	N/A	-7075.08	-1256.79	6979.23	2005.23	7175.37	95.00	0.95	0.03	0.95
	14315.00	89.97	181.15	N/A	-7170.07	-1257.47	6979.28	2005.28	7269.74	95.00	1.57	0.00	1.57
	14409.00	90.18	181.03	N/A	-7264.06	-1259.25	6979.16	2005.16	7363.25	94.00	0.26	0.22	-0.13
	14504.00	89.97	183.48	N/A	-7358.98	-1262.99	6979.03	2005.03	7457.92	95.00	2.59	-0.22	2.58
	14599.00	90.15	183.93	N/A	-7453.78	-1269.13	6978.93	2004.93	7552.76	95.00	0.51	0.19	0.47
	14693.00	90.00	182.19	N/A	-7547.64	-1274.15	6978.81	2004.81	7646.54	94.00	1.86	-0.16	-1.85
	14788.00	90.15	186.82	N/A	-7642.32	-1281.61	6978.69	2004.69	7741.42	95.00	4.88	0.16	4.87
	14883.00	89.91	186.65	N/A	-7736.66	-1292.75	6978.64	2004.64	7836.42	95.00	0.31	-0.25	-0.18
	14977.00	89.94	183.26	N/A	-7830.30	-1300.87	6978.76	2004.76	7930.35	94.00	3.61	0.03	-3.61
	15072.00	90.09	182.20	N/A	-7925.19	-1305.39	6978.73	2004.73	8025.09	95.00	1.13	0.16	-1.12
	15167.00	90.09	180.02	N/A	-8020.17	-1307.23	6978.58	2004.58	8119.58	95.00	2.29	0.00	-2.29
	15261.00	89.82	177.32	N/A	-8114.13	-1305.05	6978.66	2004.66	8212.59	94.00	2.89	-0.29	-2.87
	15356.00	90.03	175.80	N/A	-8208.96	-1299.35	6978.78	2004.78	8306.02	95.00	1.62	0.22	-1.60
	15451.00	89.88	176.46	N/A	-8303.74	-1292.94	6978.86	2004.86	8399.32	95.00	0.71	-0.16	0.69
	15545.00	90.15	175.86	N/A	-8397.53	-1286.64	6978.83	2004.83	8491.65	94.00	0.70	0.29	-0.64
	15640.00	89.97	174.29	N/A	-8492.18	-1278.49	6978.73	2004.73	8584.60	95.00	1.66	-0.19	-1.65
	15735.00	90.12	175.05	N/A	-8586.76	-1269.66	6978.66	2004.66	8677.42	95.00	0.82	0.16	0.80
	15829.00	89.78	175.27	N/A	-8680.43	-1261.73	6978.74	2004.74	8769.42	94.00	0.43	-0.36	0.23
	15924.00	89.97	176.25	N/A	-8775.17	-1254.71	6978.95	2004.95	8862.61	95.00	1.05	0.20	1.03
	16019.00	89.94	176.32	N/A	-8869.97	-1248.55	6979.02	2005.02	8955.96	95.00	0.08	-0.03	0.07
	16113.00	89.94	176.51	N/A	-8963.78	-1242.68	6979.12	2005.12	9048.36	94.00	0.20	0.00	0.20
	16208.00	89.91	177.68	N/A	-9058.66	-1237.86	6979.25	2005.25	9141.95	95.00	1.23	-0.03	1.23
	16302.00	89.75	177.90	N/A	-9152.59	-1234.24	6979.52	2005.52	9234.74	94.00	0.29	-0.17	0.23
	16397.00	90.03	179.49	N/A	-9247.56	-1232.07	6979.71	2005.71	9328.75	95.00	1.70	0.29	1.67
	16492.00	90.06	180.55	N/A	-9342.56	-1232.11	6979.63	2005.63	9423.05	95.00	1.12	0.03	1.12
	16586.00	89.88	179.94	N/A	-9436.56	-1232.51	6979.68	2005.68	9516.40	94.00	0.68	-0.19	-0.65
	16681.00	90.06	179.32	N/A	-9531.56	-1231.89	6979.73	2005.73	9610.62	95.00	0.68	0.19	-0.65
	16775.00	89.85	179.52	N/A	-9625.55	-1230.94	6979.80	2005.80	9703.80	94.00	0.31	-0.22	0.21
	16870.00	90.06	179.58	N/A	-9720.55	-1230.20	6979.88	2005.88	9798.00	95.00	0.23	0.22	0.06
	16964.00	89.91	179.46	N/A	-9814.54	-1229.41	6979.90	2005.90	9891.21	94.00	0.20	-0.16	-0.13
	17059.00	90.12	179.06	N/A	-9909.54	-1228.18	6979.88	2005.88	9985.35	95.00	0.48	0.22	-0.42
	17154.00	89.94	179.76	N/A	-10004.53	-1227.20	6979.83	2005.83	10079.52	95.00	0.76	-0.19	0.74
Projection	17204.00	89.94	179.76	N/A	-10054.53	-1226.99	6979.88	2005.88	10129.12	50.00	0.00	0.00	0.00