

LEGEND:

— = 90° SYMBOL

● = PROPOSED WELLHEAD.

▲ = SECTION CORNERS LOCATED. (NAD 83)

△ = SECTION CORNERS RE-ESTABLISHED. (Not Set on Ground.) (NAD 83)

T7S, R96W, 6th P.M.

SW Cor Sec 15
C.C. 1920 Brass Cap,
1.2' High
Lat: 39.430331°
Long: 108.103414°

True Position
Lat: 39.430317°
Long: 108.103415°

True Position
Lat: 39.430323° 84.48'
Long: 108.105692° (G.L.O.)

True Position
Lat: 39.430098°
Long: 108.105692°

NE Cor Sec 21
C.C. 1920 Brass
Cap, 1.2' High
Lat: 39.430097°
Long: 108.105656°

NOTE:
THE PROPOSED TARGET BOTTOM HOLE FOR
THIS WELL IS LOCATED IN THE NE 1/4 NW
1/4 OF SECTION 21, T7S, R96W, 6th P.M.
AT 208' FNL 2392' FWL. IT BEARS
N76°11'14"W 2753.54' FROM THE PROPOSED
WELLHEAD.

1920 Brass Cap,
Flush W/Ground
Lat: 39.423064°
Long: 108.105692°

1982 Brass Cap,
1.0' High, Mound
of Stones
Lat: 39.415767°
Long: 108.105689°

PDOP = 1.6

NAD 83 (SURFACE LOCATION)

LATITUDE = 39°25'39.84" (39.427732)

LONGITUDE = 108°06'14.59" (108.104052)

STATE PLANE NAD 83 (CO. CEN.)

N: 1591222.89 E: 2264523.41



PLAT #1

CERTIFICATE

THIS IS TO CERTIFY THAT THE ABOVE PLAT WAS PREPARED AND THE
LOCATION AS SHOWN WAS STAKED ON THE GROUND FROM FIELD NOTES
OF ACTUAL SURVEYS MADE BY ME OR UNDER MY SUPERVISION AND THAT
THE SAME ARE TRUE AND CORRECT TO THE BEST OF MY KNOWLEDGE AND
BELIEF.

REGISTERED LAND SURVEYOR
REGISTRATION # 18180
STATE OF COLORADO

REV: 3 10-02-18 M.D. (BHL MOVE)

BASIS OF BEARINGS

BASIS OF BEARINGS IS A G.P.S. OBSERVATION

BASIS OF ELEVATION

SPOT ELEVATION AT THE NORTHWEST CORNER OF SECTION 30, T7S, R95W, 6th P.M.,
TAKEN FROM THE FORKED GULCH, QUADRANGLE, COLORADO, GARFIELD COUNTY, 7.5
MINUTE QUAD. (TOPOGRAPHIC MAP) PUBLISHED BY THE UNITED STATES DEPARTMENT
OF THE INTERIOR, GEOLOGICAL SURVEY. SAID ELEVATION IS MARKED AS BEING 5966
FEET.

UELS, LLC

Corporate Office * 85 South 200 East
Vernal, UT 84078 * (435) 789-1017

**TEP Rocky Mountain LLC**

FEDERAL SG 31-21 (SURFACE LOCATION)
NW 1/4 NW 1/4, SECTION 22, T7S, R96W, 6th P.M.
GARFIELD COUNTY, COLORADO

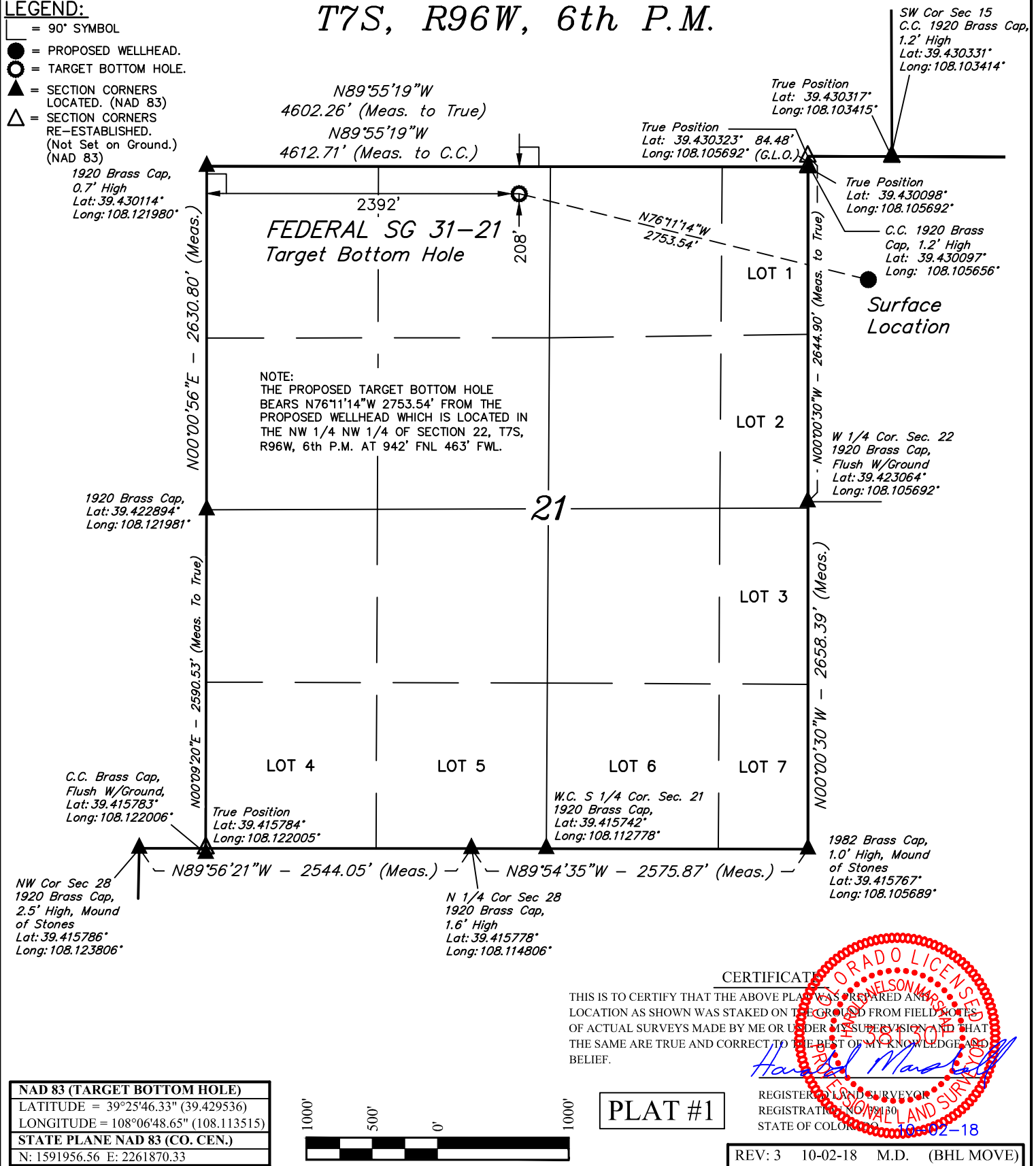
SURVEYED BY	BART HUNTING, C.R.	02-16-18	SCALE
DRAWN BY	M.D.	02-24-18	1" = 1000'

WELL LOCATION PLAT

LEGEND:

- = 90° SYMBOL
 ● = PROPOSED WELLHEAD.
 ○ = TARGET BOTTOM HOLE.
 ▲ = SECTION CORNERS LOCATED. (NAD 83)
 △ = SECTION CORNERS RE-ESTABLISHED. (Not Set on Ground.) (NAD 83)

T7S, R96W, 6th P.M.



NAD 83 (TARGET BOTTOM HOLE)
LATITUDE = 39°25'46.33\" (39.429536)
LONGITUDE = 108°06'48.65\" (108.113515)
STATE PLANE NAD 83 (CO. CEN.)
N: 1591956.56 E: 2261870.33

**BASIS OF BEARINGS**

BASIS OF BEARINGS IS A G.P.S. OBSERVATION

BASIS OF ELEVATION

SPOT ELEVATION AT THE NORTHWEST CORNER OF SECTION 30, T7S, R95W, 6th P.M., TAKEN FROM THE FORKED GULCH, QUADRANGLE, COLORADO, GARFIELD COUNTY, 7.5 MINUTE QUAD. (TOPOGRAPHIC MAP) PUBLISHED BY THE UNITED STATES DEPARTMENT OF THE INTERIOR, GEOLOGICAL SURVEY. SAID ELEVATION IS MARKED AS BEING 5966 FEET.

UELS, LLC

Corporate Office * 85 South 200 East
Vernal, UT 84078 * (435) 789-1017

**TEP Rocky Mountain LLC**

FEDERAL SG 31-21 (TARGET BOTTOM HOLE)
NW 1/4 NE 1/4, SECTION 21, T7S, R96W, 6th P.M.
GARFIELD COUNTY, COLORADO

SURVEYED BY	BART HUNTING, C.R.	02-16-18	SCALE
DRAWN BY	M.D.	02-24-18	1" = 1000'

WELL LOCATION PLAT