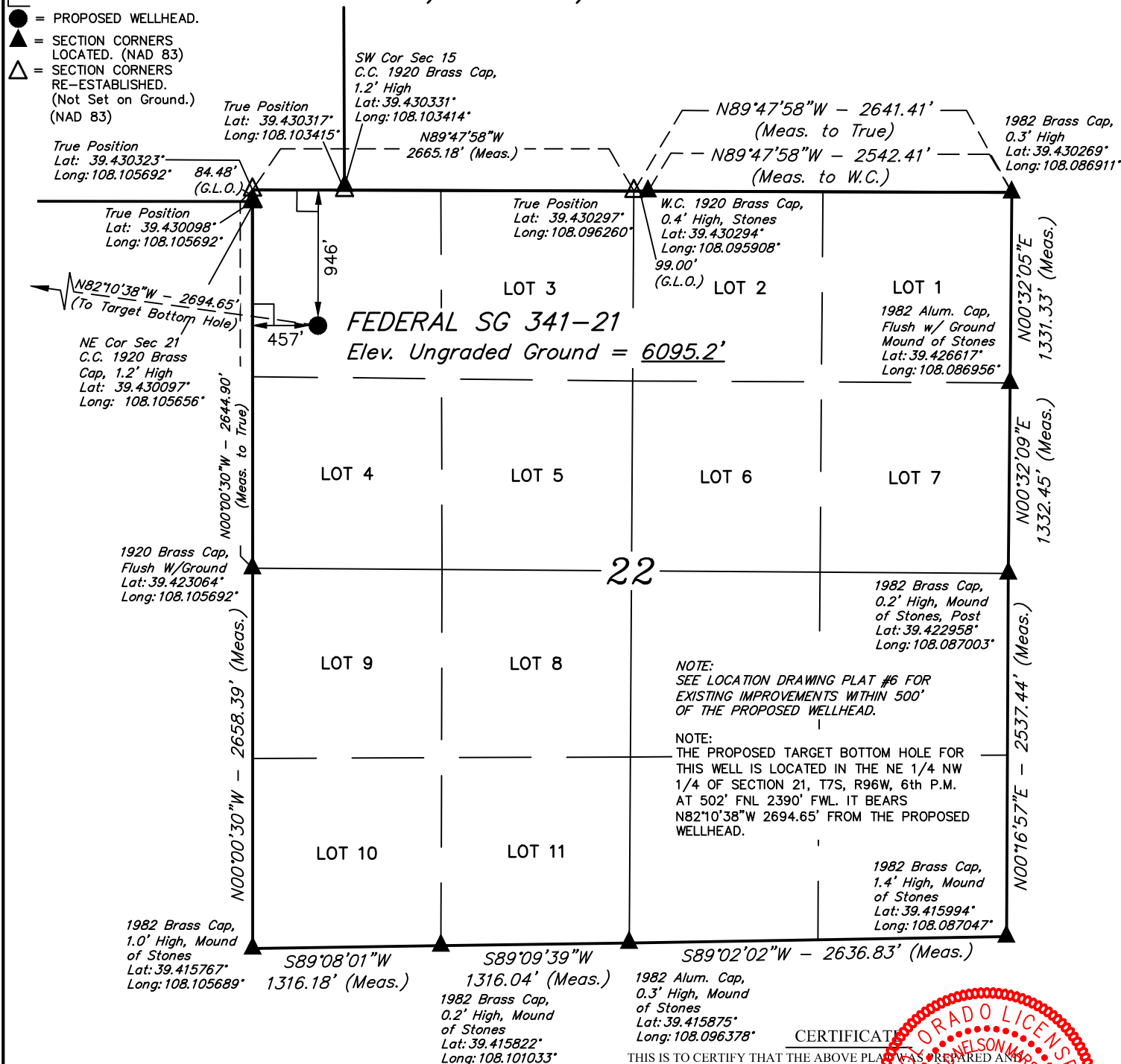


LEGEND:

- 90° SYMBOL
- PROPOSED WELLHEAD.
- SECTION CORNERS LOCATED. (NAD 83)
- SECTION CORNERS RE-ESTABLISHED. (Not Set on Ground.) (NAD 83)

T7S, R96W, 6th P.M.



PDOP = 1.6

NAD 83 (SURFACE LOCATION)
 LATITUDE = 39°25'39.79" (39.427721)
 LONGITUDE = 108°06'14.67" (108.104074)
STATE PLANE NAD 83 (CO. CEN.)
 N: 1591218.97 E: 2264516.98



THIS IS TO CERTIFY THAT THE ABOVE PLAT WAS PREPARED AND THE LOCATION AS SHOWN WAS STAKED ON THE GROUND FROM FIELD NOTES OF ACTUAL SURVEYS MADE BY ME OR UNDER MY SUPERVISION AND THAT THE SAME ARE TRUE AND CORRECT TO THE BEST OF MY KNOWLEDGE AND BELIEF.

PLAT #1

REGISTERED LAND SURVEYOR
 REGISTRATION # 18180
 STATE OF COLORADO 10-02-18

REV: 3 10-02-18 M.D. (BHL MOVE)

BASIS OF BEARINGS

BASIS OF BEARINGS IS A G.P.S. OBSERVATION

BASIS OF ELEVATION

SPOT ELEVATION AT THE NORTHWEST CORNER OF SECTION 30, T7S, R95W, 6th P.M., TAKEN FROM THE FORKED GULCH, QUADRANGLE, COLORADO, GARFIELD COUNTY, 7.5 MINUTE QUAD. (TOPOGRAPHIC MAP) PUBLISHED BY THE UNITED STATES DEPARTMENT OF THE INTERIOR, GEOLOGICAL SURVEY. SAID ELEVATION IS MARKED AS BEING 5966 FEET.

UELS, LLC

Corporate Office * 85 South 200 East
 Vernal, UT 84078 * (435) 789-1017



TEP Rocky Mountain LLC

FEDERAL SG 341-21 (SURFACE LOCATION)
 NW 1/4 NW 1/4, SECTION 22, T7S, R96W, 6th P.M.
 GARFIELD COUNTY, COLORADO

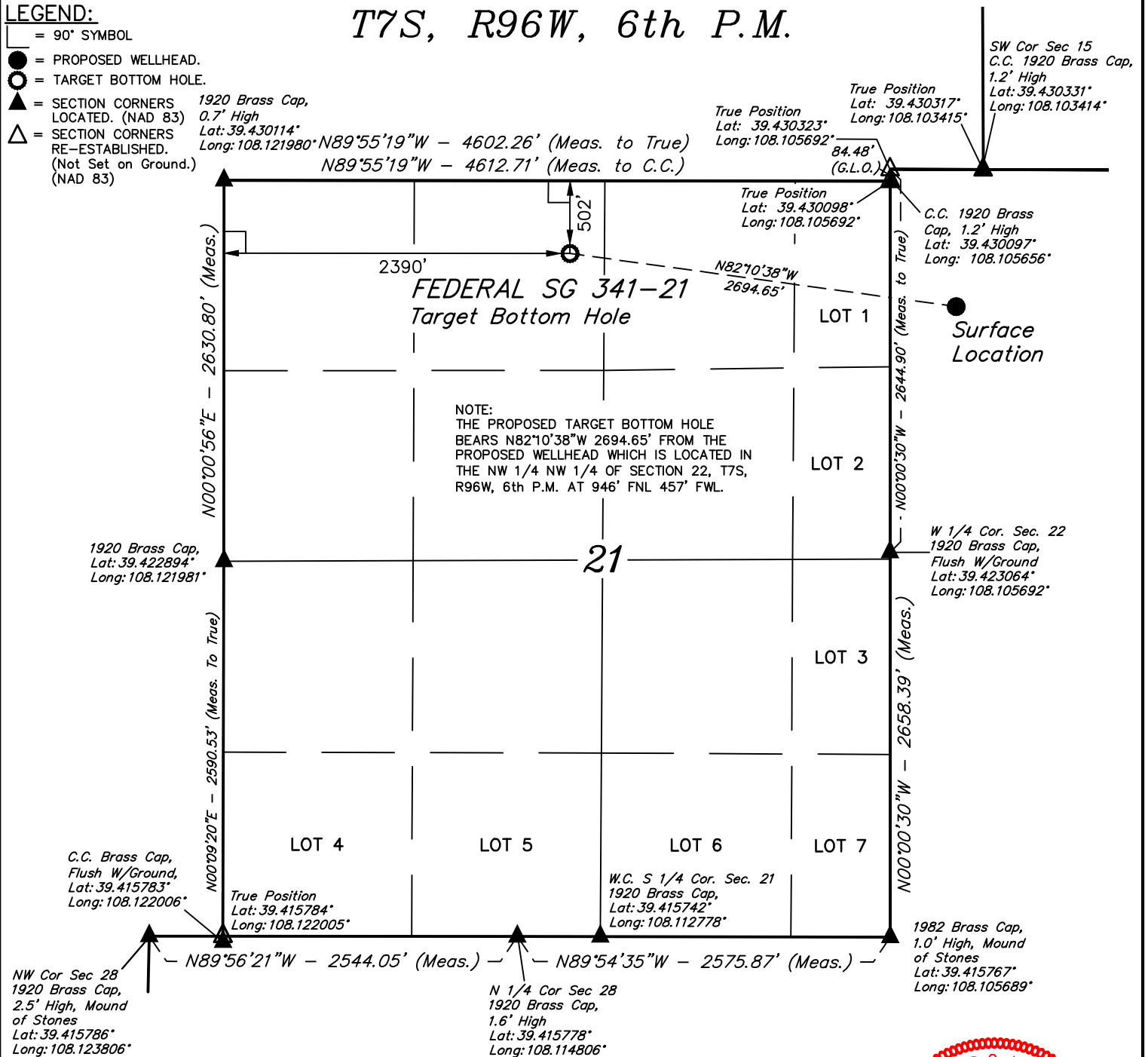
SURVEYED BY	BART HUNTING, C.R.	02-16-18	SCALE
DRAWN BY	M.D.	02-24-18	1" = 1000'

WELL LOCATION PLAT

LEGEND:

- = 90° SYMBOL
 ● = PROPOSED WELLHEAD.
 ○ = TARGET BOTTOM HOLE.
 ▲ = SECTION CORNERS LOCATED. (NAD 83)
 △ = SECTION CORNERS RE-ESTABLISHED. (Not Set on Ground.) (NAD 83)

T7S, R96W, 6th P.M.



NAD 83 (TARGET BOTTOM HOLE)
LATITUDE = 39°25'43.42" (39.428727)
LONGITUDE = 108°06'48.68" (108.113522)
STATE PLANE NAD 83 (CO. CEN.)
N: 1591662.08 E: 2261859.91



PLAT #1

CERTIFICATE

THIS IS TO CERTIFY THAT THE ABOVE PLAT WAS PREPARED AND THE LOCATION AS SHOWN WAS STAKED ON THE GROUND FROM FIELD NOTES OF ACTUAL SURVEYS MADE BY ME OR UNDER MY SUPERVISION AND THAT THE SAME ARE TRUE AND CORRECT TO THE BEST OF MY KNOWLEDGE AND BELIEF.

REGISTERED LAND SURVEYOR
 REGISTRATION NO. 108180
 STATE OF COLORADO 10-02-18

REV: 3 10-02-18 M.D. (BHL MOVE)

BASIS OF BEARINGS

BASIS OF BEARINGS IS A G.P.S. OBSERVATION

BASIS OF ELEVATION

SPOT ELEVATION AT THE NORTHWEST CORNER OF SECTION 30, T7S, R95W, 6th P.M., TAKEN FROM THE FORKED GULCH, QUADRANGLE, COLORADO, GARFIELD COUNTY, 7.5 MINUTE QUAD. (TOPOGRAPHIC MAP) PUBLISHED BY THE UNITED STATES DEPARTMENT OF THE INTERIOR, GEOLOGICAL SURVEY. SAID ELEVATION IS MARKED AS BEING 5966 FEET.

UELS, LLC

Corporate Office * 85 South 200 East
Vernal, UT 84078 * (435) 789-1017



TEP Rocky Mountain LLC

FEDERAL SG 341-21 (TARGET BOTTOM HOLE)
NW 1/4 NE 1/4, SECTION 21, T7S, R96W, 6th P.M.
GARFIELD COUNTY, COLORADO

SURVEYED BY	BART HUNTING, C.R.	02-16-18	SCALE
DRAWN BY	M.D.	02-24-18	1" = 1000'

WELL LOCATION PLAT

