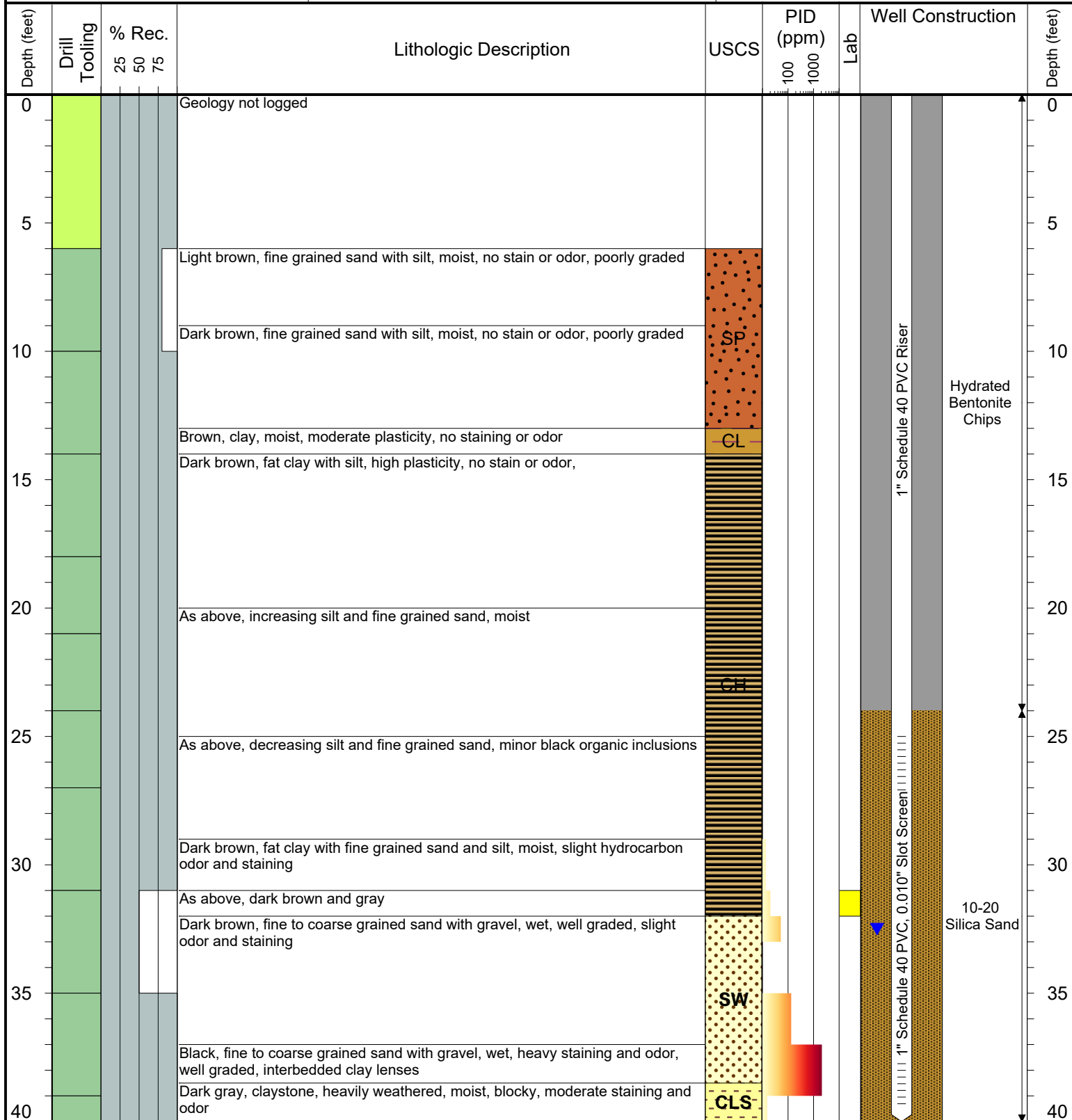




6899 Pecos Street, Unit C
Denver, Colorado 80221

CLIENT: Kerr-McGee Oil & Gas Onshore LP	Ernie F Adamson GU-62N65W/21SWSW Production Facility
LOGGED BY: Zach Mahaffey	
PROJECT MANAGER: Robert Cornez	BORING / WELL ID: BH01 (Removed)
DRILLING CONTRACTOR: Tasman Geosciences	
DRILLING EQUIPMENT: AMS Powerprobe 9300-SK	SURFACE COMPLETION: Flush Mount
DRILL BIT SIZE (INCHES): 2.375	NORTHING (CO STATE PLANE): 40.11775031
DATE STARTED - COMPLETED: 9/2/2016	EASTING (CO STATE PLANE): -104.6691788
TOTAL WELL DEPTH (FT. BGS): 40	CASING ELEVATION (FT. AMSL): 4895.79
DEPTH TO WATER (FT. BGS): 32.5 (9/2/2016) ▼	GROUND ELEVATION (FT. AMSL): 4895.89



Drilling / Sample Method:

Macro-Core
 Hydrovac
 CME Core Barrel
 Hand Auger

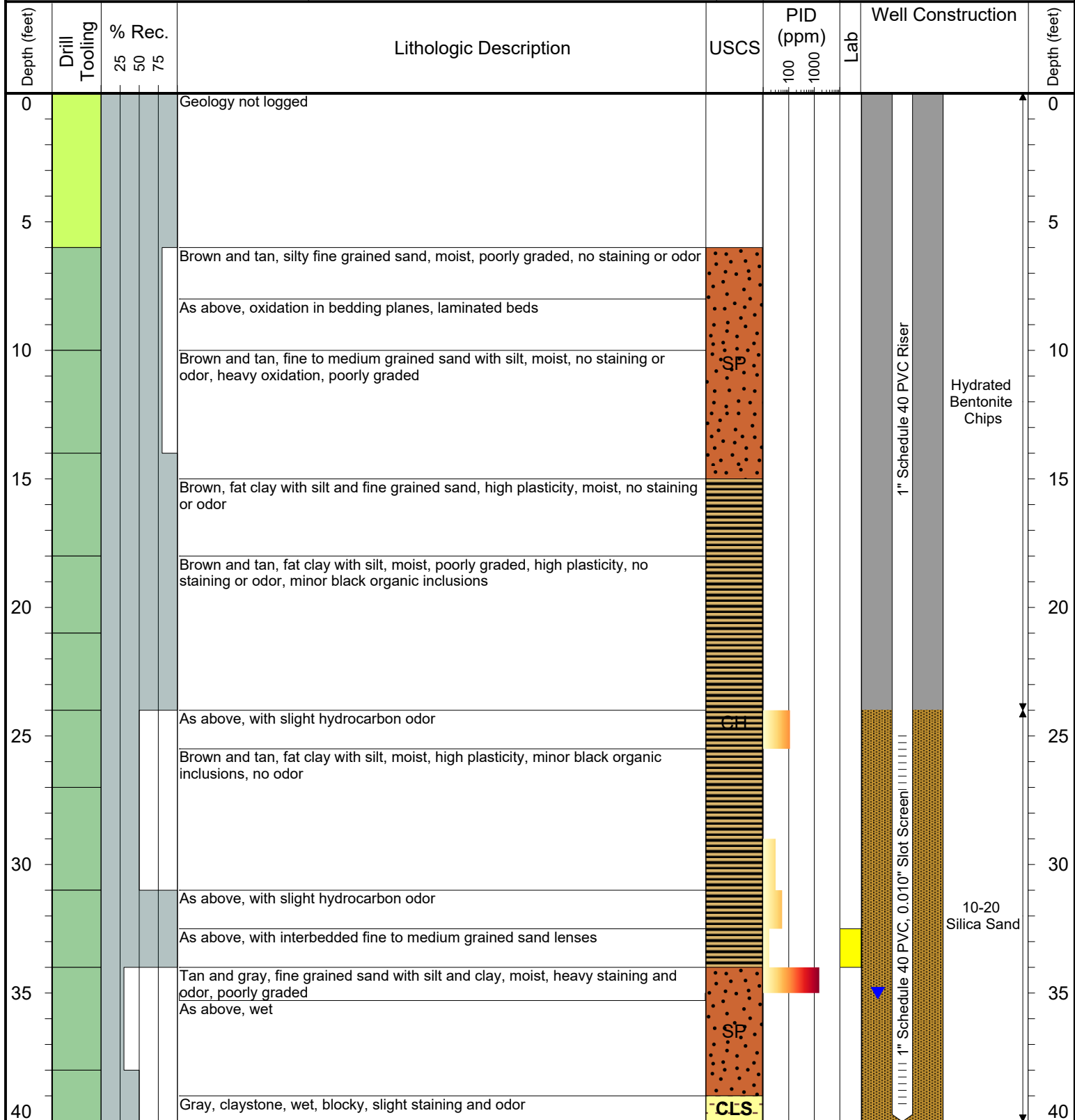
Laboratory Sample Types:

Geotechnical Lab
 Analytical Chemistry Lab
 Geotechnical & Analytical Chemistry Lab



6899 Pecos Street, Unit C
Denver, Colorado 80221

CLIENT: Kerr-McGee Oil & Gas Onshore LP	Ernie F Adamson GU-62N65W/21SWSW Production Facility
LOGGED BY: Zach Mahaffey	
PROJECT MANAGER: Robert Cornez	BORING / WELL ID: BH02 (Removed)
DRILLING CONTRACTOR: Tasman Geosciences	
DRILLING EQUIPMENT: AMS Powerprobe 9300-SK	SURFACE COMPLETION: Flush Mount
DRILL BIT SIZE (INCHES): 2.375	NORTHING (CO STATE PLANE): 40.11759039
DATE STARTED - COMPLETED: 9/2/2016	EASTING (CO STATE PLANE): -104.669006
TOTAL WELL DEPTH (FT. BGS): 40	CASING ELEVATION (FT. AMSL): 4897.79
DEPTH TO WATER (FT. BGS): 35 (9/2/2016) ▼	GROUND ELEVATION (FT. AMSL): 4898.1



Drilling / Sample Method:

Macro-Core Hydrovac CME Core Barrel
Expendable Well Tip Hand Auger

Laboratory Sample Types:

Geotechnical Lab Geotechnical & Analytical Chemistry Lab
Analytical Chemistry Lab



6899 Pecos Street, Unit C
Denver, Colorado 80221

CLIENT: Kerr-McGee Oil & Gas Onshore LP

LOGGED BY: Zach Mahaffey

PROJECT MANAGER: Robert Cornez

DRILLING CONTRACTOR: Tasman Geosciences

DRILLING EQUIPMENT: AMS Powerprobe 9300-SK

DRILL BIT SIZE (INCHES): 2.375

DATE STARTED - COMPLETED: 9/2/2016

TOTAL WELL DEPTH (FT. BGS): 40

DEPTH TO WATER (FT. BGS): 32 (9/2/2016) ▼

Ernie F Adamson GU-62N65W/21SWSW
Production Facility

BORING / WELL ID: BH03 (Removed)

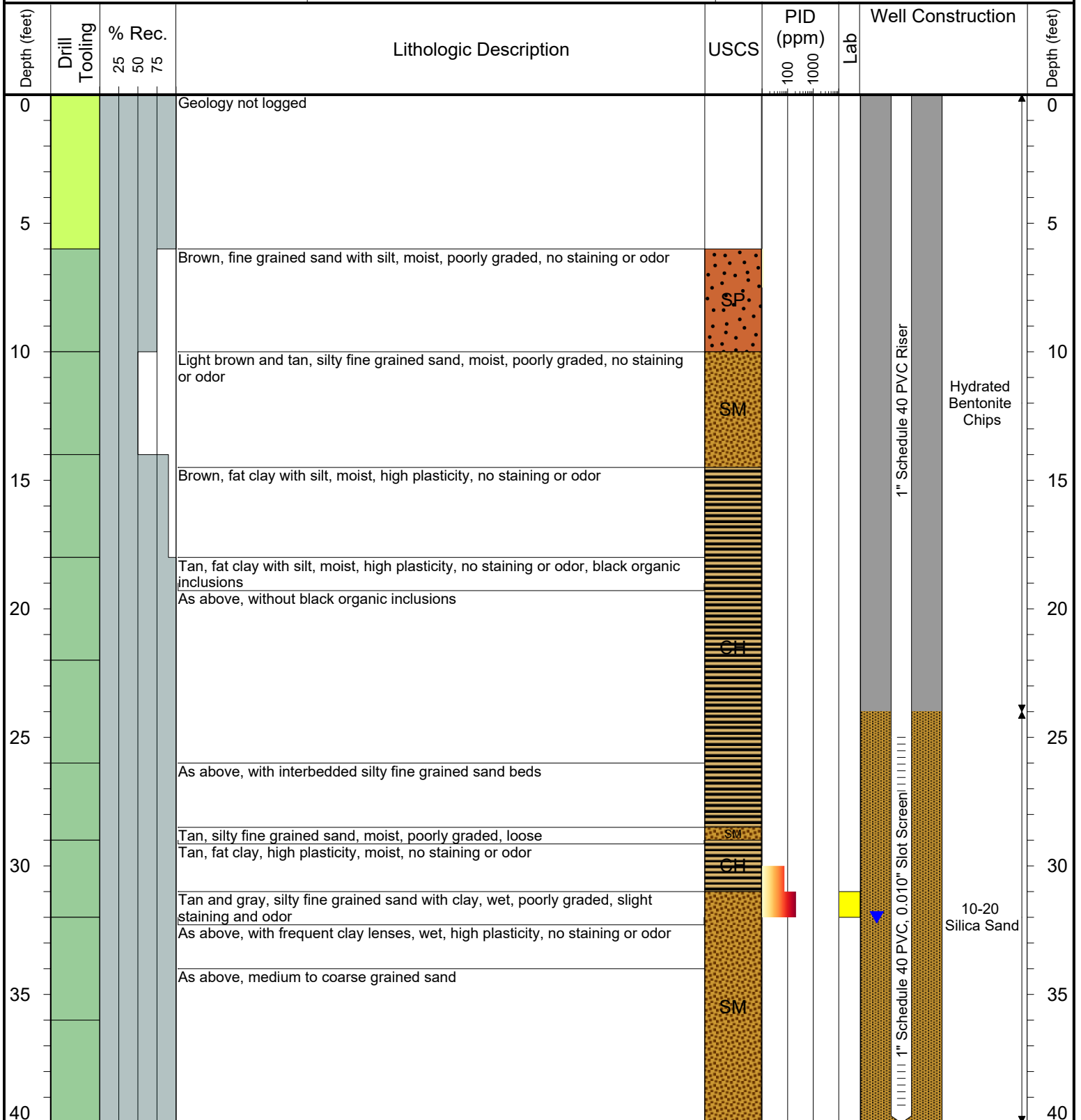
SURFACE COMPLETION: Flush Mount

NORTHING (CO STATE PLANE): 40.11745598

EASTING (CO STATE PLANE): -104.6692

CASING ELEVATION (FT. AMSL): 4896.79

GROUND ELEVATION (FT. AMSL): 4896.82



Drilling / Sample Method:

Macro-Core Hydrovac CME Core Barrel
Expendable Well Tip Hand Auger

Laboratory Sample Types:

Geotechnical Lab Geotechnical & Analytical Chemistry Lab
Analytical Chemistry Lab



6899 Pecos Street, Unit C
Denver, Colorado 80221

CLIENT: Kerr-McGee Oil & Gas Onshore LP

LOGGED BY: Zach Mahaffey

PROJECT MANAGER: Robert Cornez

DRILLING CONTRACTOR: Tasman Geosciences

DRILLING EQUIPMENT: AMS Powerprobe 9300-SK

DRILL BIT SIZE (INCHES): 2.375

DATE STARTED - COMPLETED: 3/7/2017

TOTAL WELL DEPTH (FT. BGS): 41

DEPTH TO WATER (FT. BGS): 27.89 (3/27/2017) ▼

Ernie F Adamson GU-62N65W/21SWSW
Production Facility

BORING / WELL ID: BH04

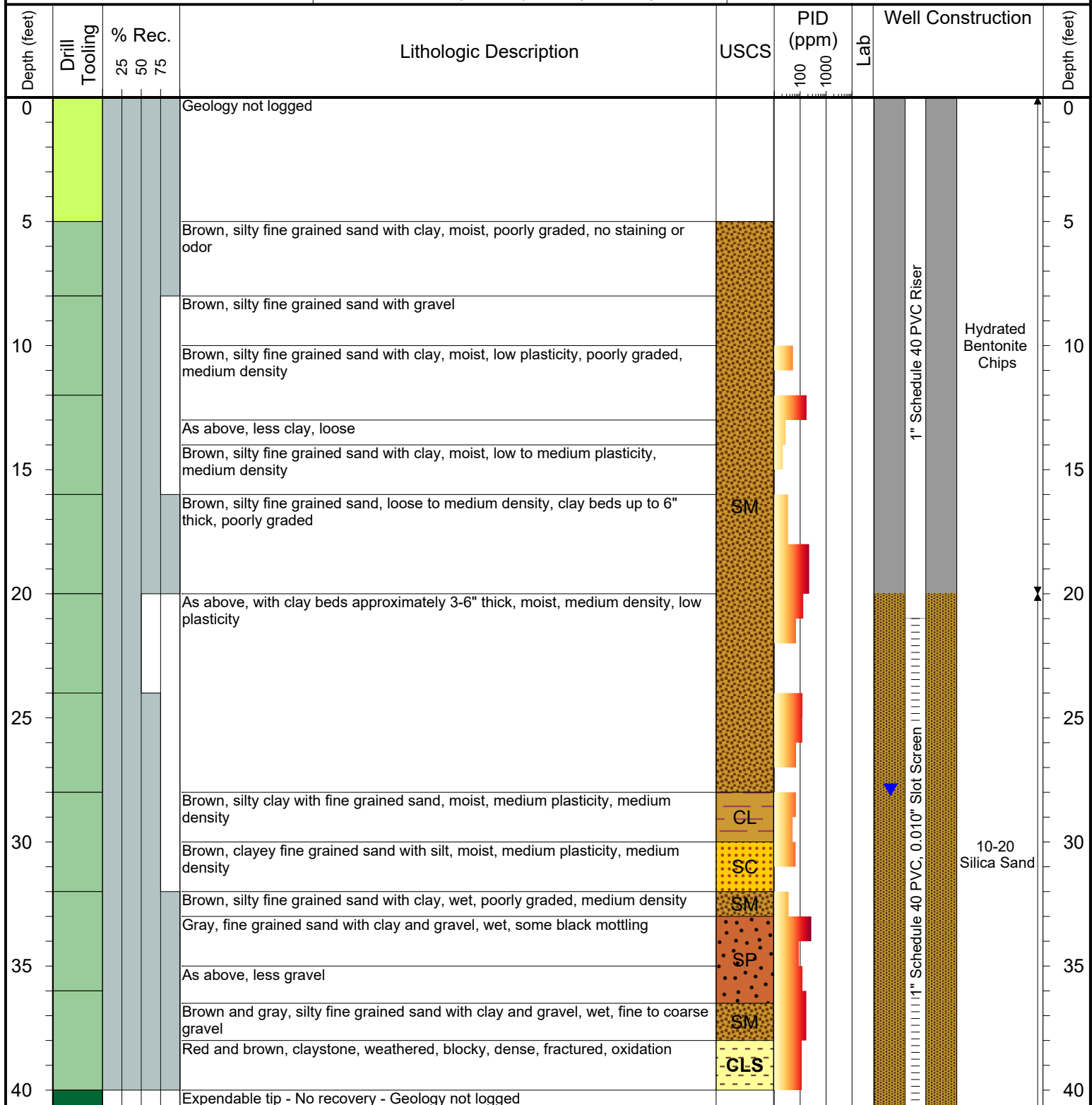
SURFACE COMPLETION: Stick up: 3.48'

NORTHING (CO STATE PLANE): 40.11754548

EASTING (CO STATE PLANE): -104.6691308

CASING ELEVATION (FT. AMSL): 4899.44

GROUND ELEVATION (FT. AMSL): 4895.96



Drilling / Sample Method:

- Macro-Core
- Expendable Well Tip
- Hydrovac
- Hand Auger
- CME Core Barrel

Laboratory Sample Types:

- Geotechnical Lab
- Analytical Chemistry Lab
- Geotechnical & Analytical Chemistry Lab



6899 Pecos Street, Unit C
Denver, Colorado 80221

CLIENT: Kerr-McGee Oil & Gas Onshore LP

LOGGED BY: Zach Mahaffey

PROJECT MANAGER: Robert Cornez

DRILLING CONTRACTOR: Tasman Geosciences

DRILLING EQUIPMENT: AMS Powerprobe 9300-SK

DRILL BIT SIZE (INCHES): 2.375

DATE STARTED - COMPLETED: 3/7/2017

TOTAL WELL DEPTH (FT. BGS): 40

DEPTH TO WATER (FT. BGS): 27.67 (3/27/2017) ▼

Ernie F Adamson GU-62N65W/21SWSW
Production Facility

BORING / WELL ID: BH05

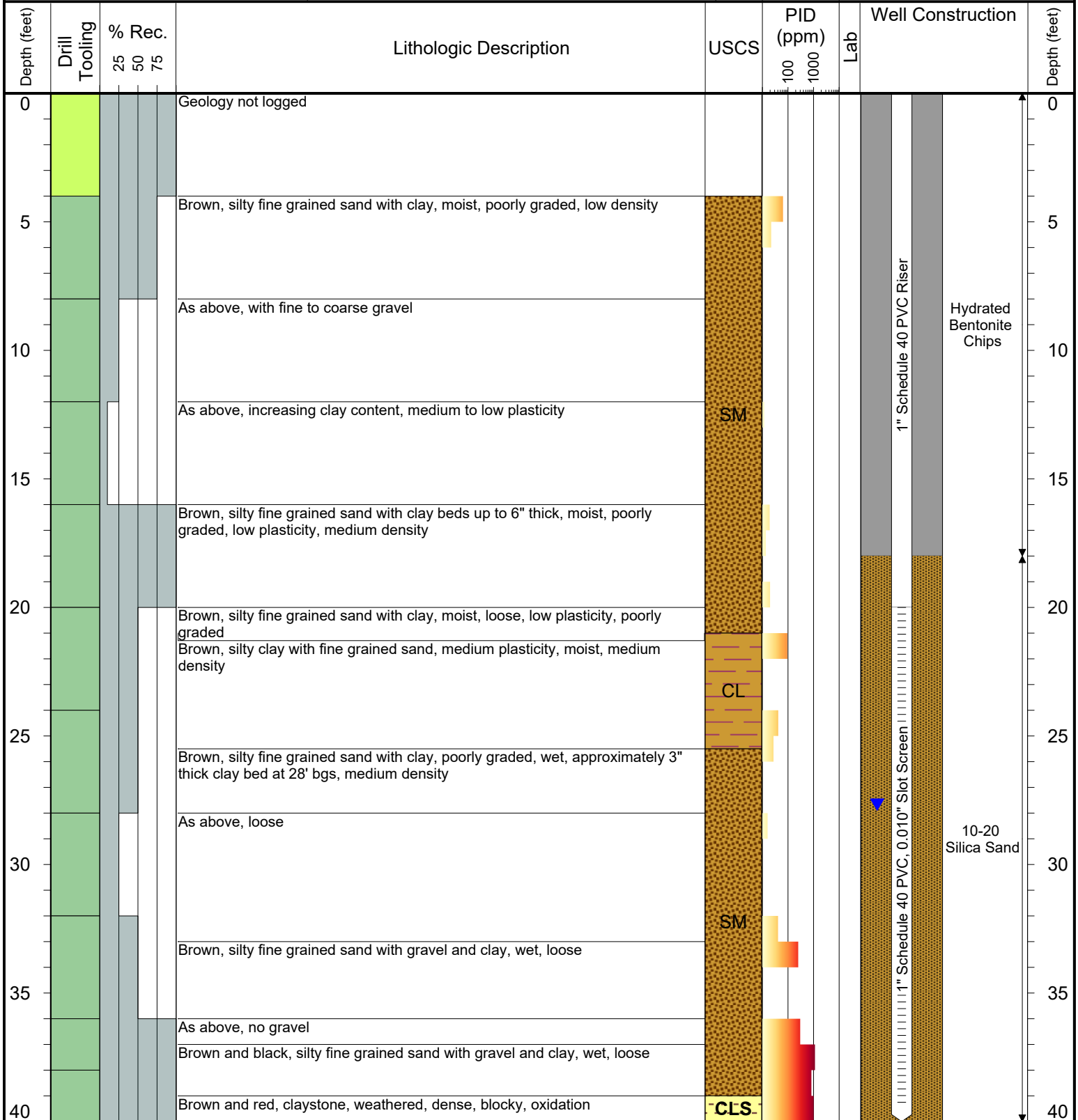
SURFACE COMPLETION: Stick up: 3.67'

NORTHING (CO STATE PLANE): 40.11765166

EASTING (CO STATE PLANE): -104.6691276

CASING ELEVATION (FT. AMSL): 4899.12

GROUND ELEVATION (FT. AMSL): 4895.45



Drilling / Sample Method:

- Macro-Core
- Hydrovac
- CME Core Barrel
- Expendable Well Tip
- Hand Auger

Laboratory Sample Types:

- Geotechnical Lab
- Analytical Chemistry Lab
- Geotechnical & Analytical Chemistry Lab



6899 Pecos Street, Unit C
Denver, Colorado 80221

CLIENT: Kerr-McGee Oil & Gas Onshore LP

LOGGED BY: Zach Mahaffey

PROJECT MANAGER: Robert Cornez

DRILLING CONTRACTOR: Tasman Geosciences

DRILLING EQUIPMENT: AMS Powerprobe 9300-SK

DRILL BIT SIZE (INCHES): 2.375

DATE STARTED - COMPLETED: 3/8/2017

TOTAL WELL DEPTH (FT. BGS): 44

DEPTH TO WATER (FT. BGS): 28.21 (3/27/2017) ▼

Ernie F Adamson GU-62N65W/21SWSW
Production Facility

BORING / WELL ID: BH07

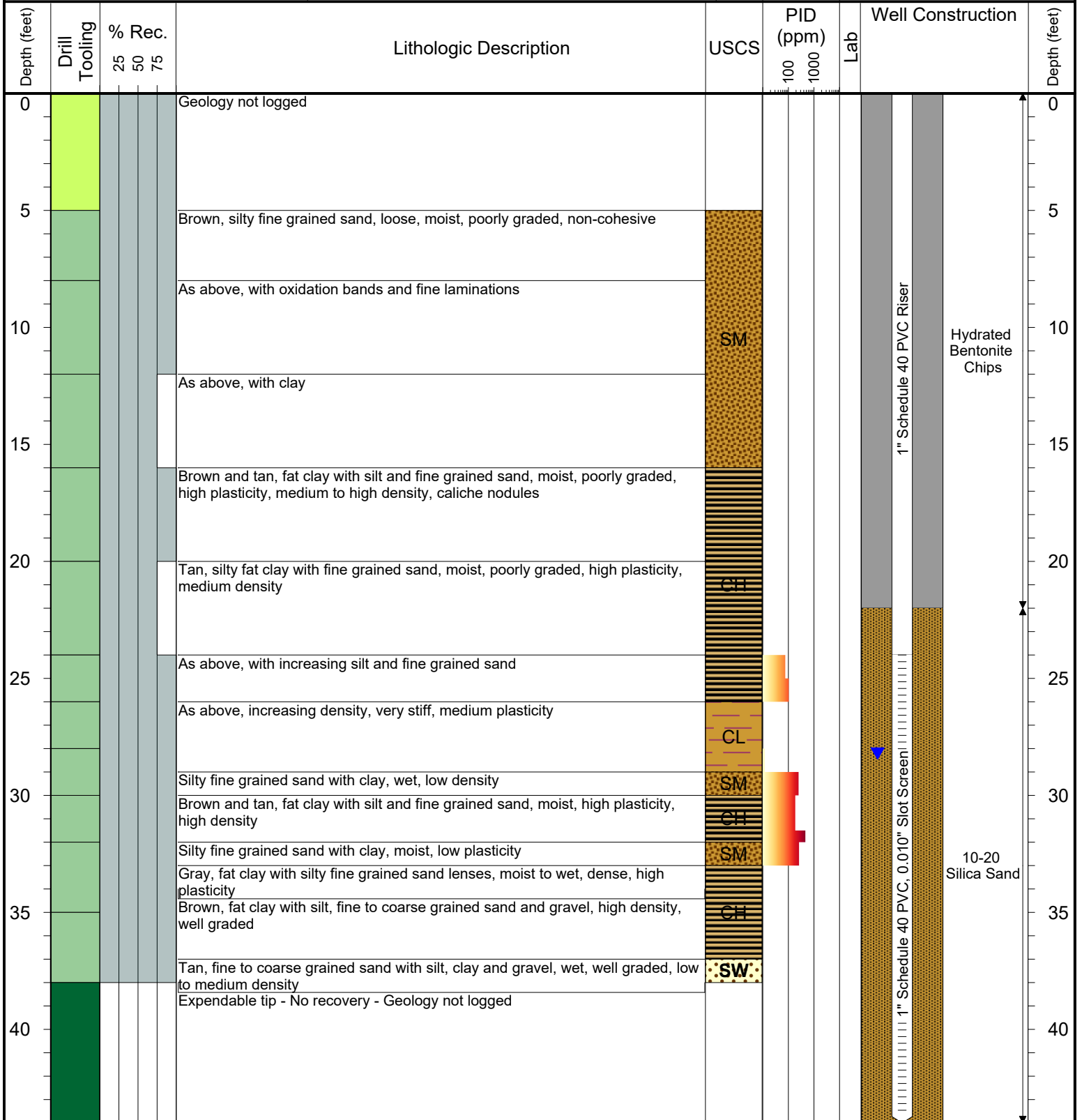
SURFACE COMPLETION: Stick up: 3.49'

NORTHING (CO STATE PLANE): 40.11742794

EASTING (CO STATE PLANE): -104.6691216

CASING ELEVATION (FT. AMSL): 4900.01

GROUND ELEVATION (FT. AMSL): 4896.52



Drilling / Sample Method:

- Macro-Core
- Hydrovac
- CME Core Barrel
- Expendable Well Tip
- Hand Auger

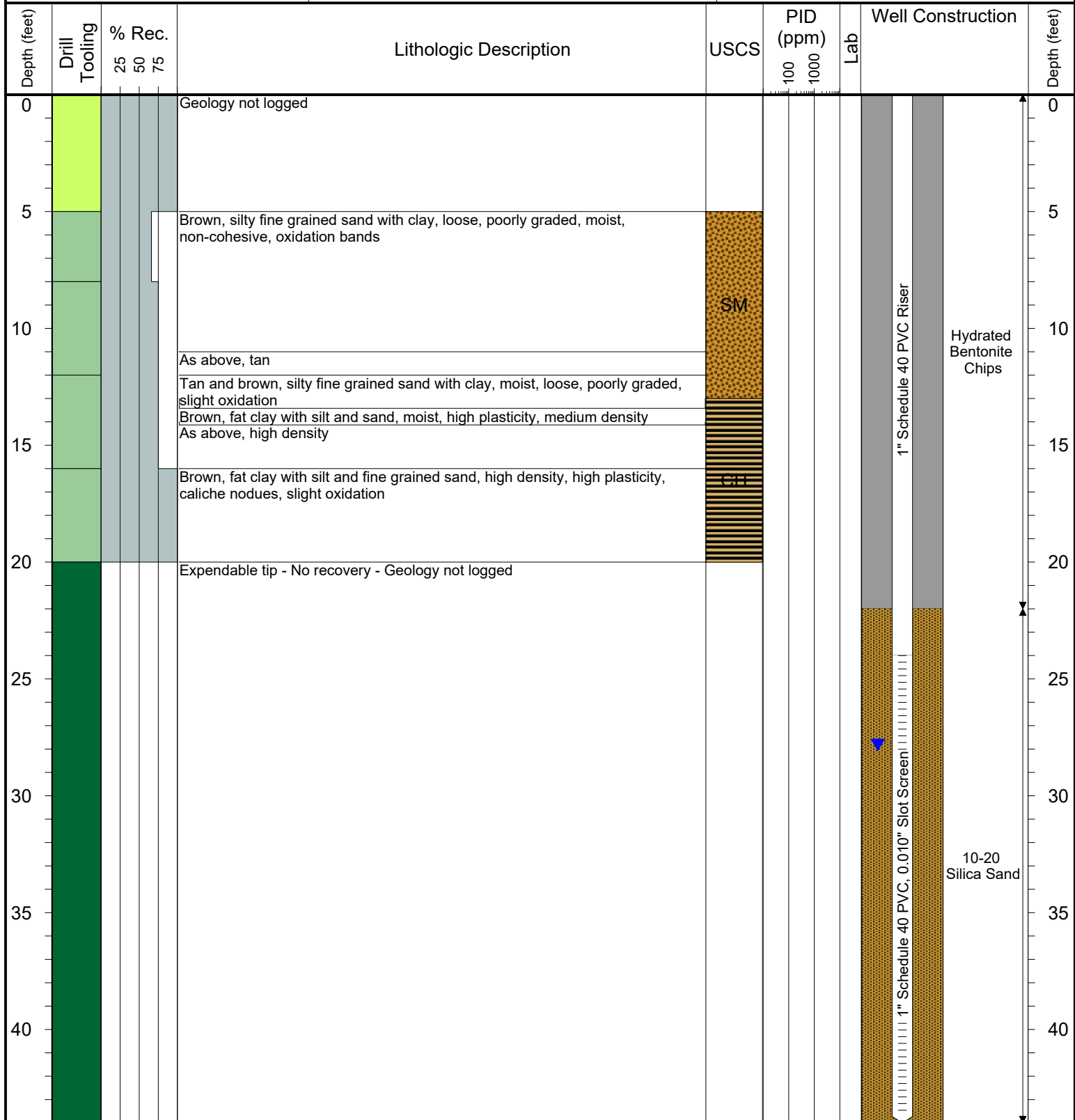
Laboratory Sample Types:

- Geotechnical Lab
- Analytical Chemistry Lab
- Geotechnical & Analytical Chemistry Lab



6899 Pecos Street, Unit C
Denver, Colorado 80221

CLIENT: Kerr-McGee Oil & Gas Onshore LP	Ernie F Adamson GU-62N65W/21SWSW Production Facility
LOGGED BY: Zach Mahaffey	
PROJECT MANAGER: Robert Cornez	BORING / WELL ID: BH08
DRILLING CONTRACTOR: Tasman Geosciences	
DRILLING EQUIPMENT: AMS Powerprobe 9300-SK	SURFACE COMPLETION: Stick up: 3.34'
DRILL BIT SIZE (INCHES): 2.375	NORTHING (CO STATE PLANE): 40.11774934
DATE STARTED - COMPLETED: 3/9/2017	EASTING (CO STATE PLANE): -104.6691312
TOTAL WELL DEPTH (FT. BGS): 44	CASING ELEVATION (FT. AMSL): 4898.92
DEPTH TO WATER (FT. BGS): 27.82 (3/27/2017) ▼	GROUND ELEVATION (FT. AMSL): 4895.58



Drilling / Sample Method:

Macro-Core
 Hydrovac
 CME Core Barrel
 Expendable Well Tip
 Hand Auger

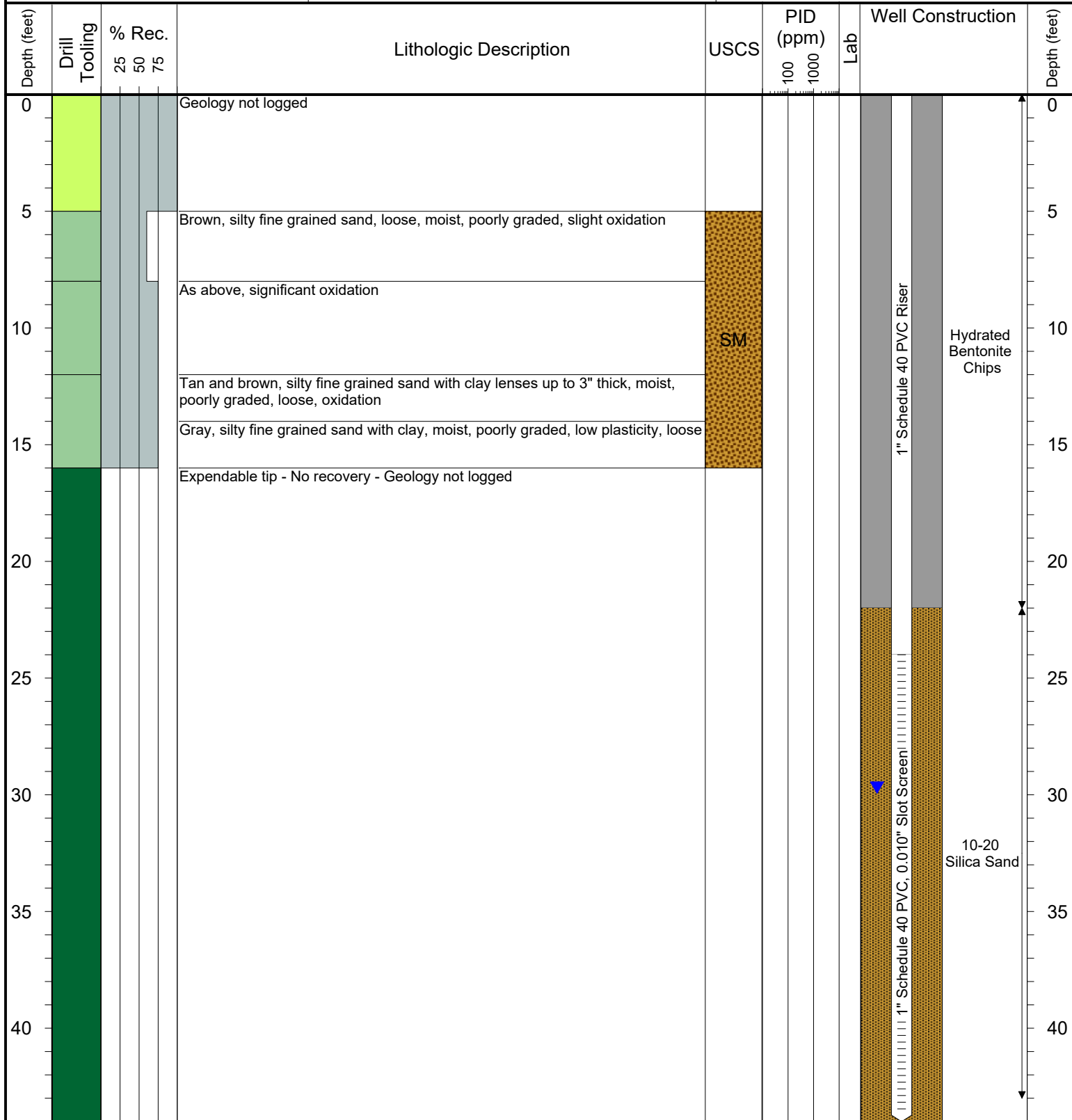
Laboratory Sample Types:

Geotechnical Lab
 Geotechnical & Analytical Chemistry Lab
 Analytical Chemistry Lab



6899 Pecos Street, Unit C
Denver, Colorado 80221

CLIENT: Kerr-McGee Oil & Gas Onshore LP	Ernie F Adamson GU-62N65W/21SWSW Production Facility
LOGGED BY: Zach Mahaffey	
PROJECT MANAGER: Robert Cornez	BORING / WELL ID: BH09 (Destroyed)
DRILLING CONTRACTOR: Tasman Geosciences	
DRILLING EQUIPMENT: AMS Powerprobe 9300-SK	SURFACE COMPLETION: Flush Mount
DRILL BIT SIZE (INCHES): 2.375	NORTHING (CO STATE PLANE): 40.11771305
DATE STARTED - COMPLETED: 3/9/2017	EASTING (CO STATE PLANE): -104.6689819
TOTAL WELL DEPTH (FT. BGS): 44	CASING ELEVATION (FT. AMSL): 4897.31
DEPTH TO WATER (FT. BGS): 29.69 (3/27/2017) ▼	GROUND ELEVATION (FT. AMSL): 4897.38



Drilling / Sample Method:

- Macro-Core
- Hydrovac
- CME Core Barrel
- Expendable Well Tip
- Hand Auger

Laboratory Sample Types:

- Geotechnical Lab
- Analytical Chemistry Lab
- Geotechnical & Analytical Chemistry Lab



6899 Pecos Street, Unit C
Denver, Colorado 80221

CLIENT: Kerr-McGee Oil & Gas Onshore LP

LOGGED BY: Alexander Hamilton

PROJECT MANAGER: Robert Cornez

DRILLING CONTRACTOR: Site Services Drilling, LLC

DRILLING EQUIPMENT: CME 55

DRILL BIT SIZE (INCHES): 8"

DATE STARTED - COMPLETED: 8/13/2018 - 8/14/2018

TOTAL WELL DEPTH (FT. BGS): 43

DEPTH TO WATER (FT. BGS): 35.23 (8/24/2018) ▼

Ernie F Adamson GU-62N65W/21SWSW
Production Facility

BORING / WELL ID: BH09R

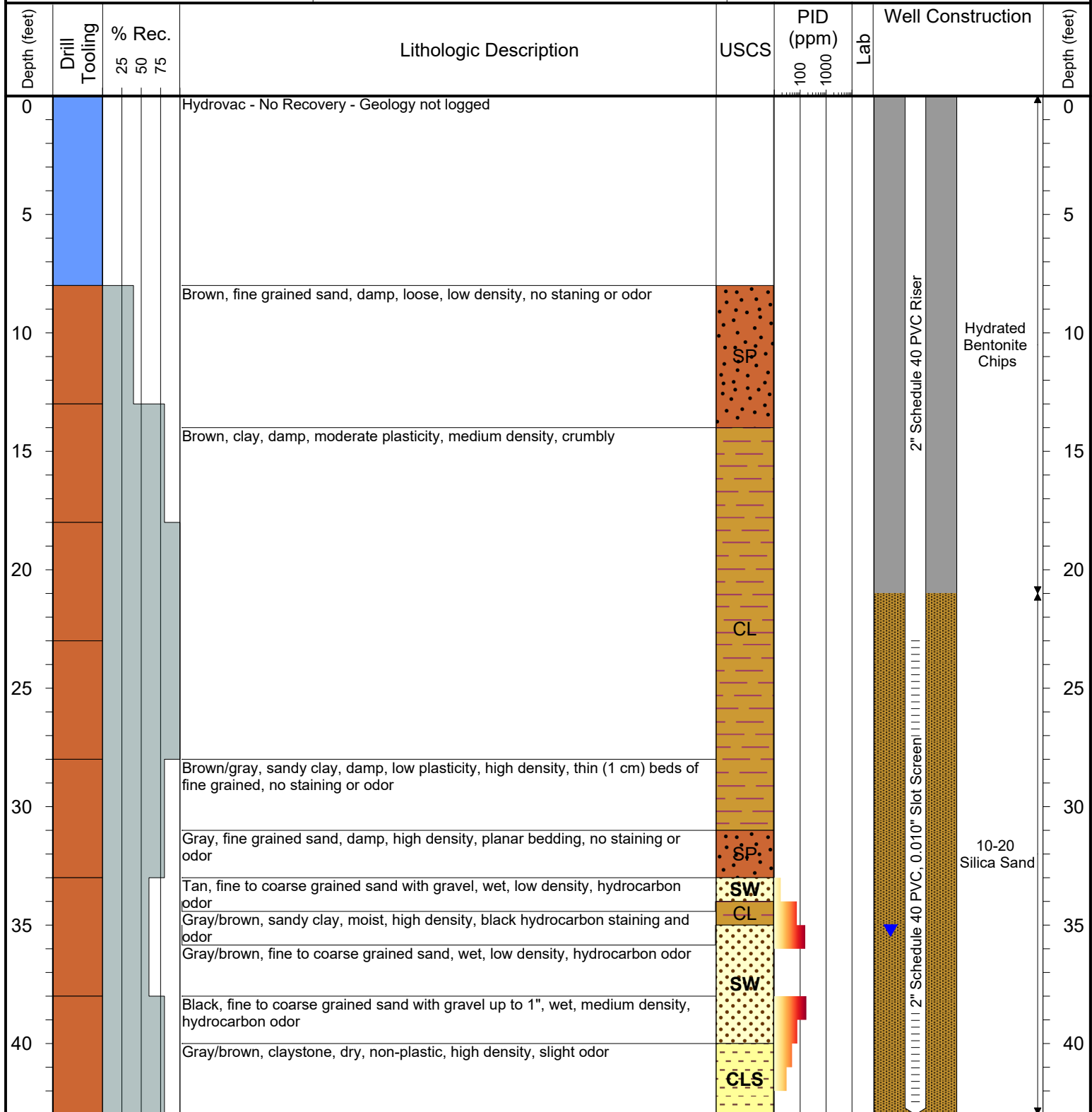
SURFACE COMPLETION: Flush Mount

NORTHING (CO STATE PLANE): 40.117703772

EASTING (CO STATE PLANE): -104.66895117

CASING ELEVATION (FT. AMSL): 4897.04

GROUND ELEVATION (FT. AMSL): 4897.37



Drilling / Sample Method:

Macro-Core Hydrovac CME Core Barrel
Expendable Well Tip Hand Auger

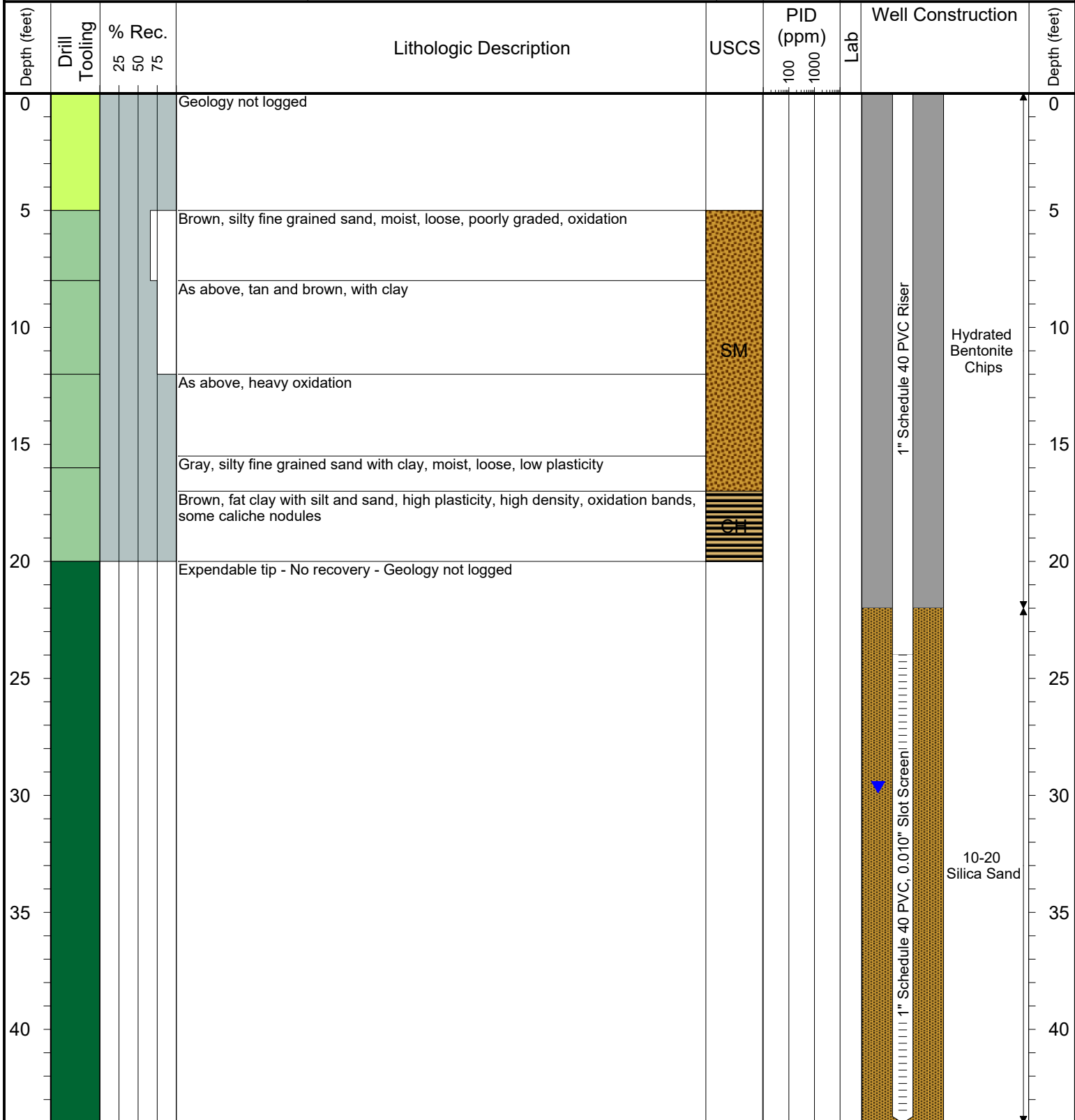
Laboratory Sample Types:

Geotechnical Lab Geotechnical & Analytical Chemistry Lab
Analytical Chemistry Lab



6899 Pecos Street, Unit C
Denver, Colorado 80221

CLIENT: Kerr-McGee Oil & Gas Onshore LP	Ernie F Adamson GU-62N65W/21SWSW Production Facility
LOGGED BY: Zach Mahaffey	
PROJECT MANAGER: Robert Cornez	BORING / WELL ID: BH10
DRILLING CONTRACTOR: Tasman Geosciences	
DRILLING EQUIPMENT: AMS Powerprobe 9300-SK	SURFACE COMPLETION: Flush Mount
DRILL BIT SIZE (INCHES): 2.375	NORTHING (CO STATE PLANE): 40.11744463
DATE STARTED - COMPLETED: 3/9/2017	EASTING (CO STATE PLANE): -104.6689804
TOTAL WELL DEPTH (FT. BGS): 44	CASING ELEVATION (FT. AMSL): 4897.27
DEPTH TO WATER (FT. BGS): 29.65 (3/27/2017) ▼	GROUND ELEVATION (FT. AMSL): 4897.56



Drilling / Sample Method:			Laboratory Sample Types:		
Macro-Core	Hydrovac	CME Core Barrel	Geotechnical Lab	Geotechnical & Analytical Chemistry Lab	
Expendable Well Tip	Hand Auger		Analytical Chemistry Lab		



6899 Pecos Street, Unit C
Denver, Colorado 80221

CLIENT: Kerr-McGee Oil & Gas Onshore LP

LOGGED BY: Alexander Hamilton

PROJECT MANAGER: Robert Cornez

DRILLING CONTRACTOR: Site Services Drilling, LLC

DRILLING EQUIPMENT: CME 55

DRILL BIT SIZE (INCHES): 8"

DATE STARTED - COMPLETED: 8/13/2018

TOTAL WELL DEPTH (FT. BGS): 44

DEPTH TO WATER (FT. BGS): 35.38 (8/24/2018) ▼

Ernie F Adamson GU-62N65W/21SWSW
Production Facility

BORING / WELL ID: BH11

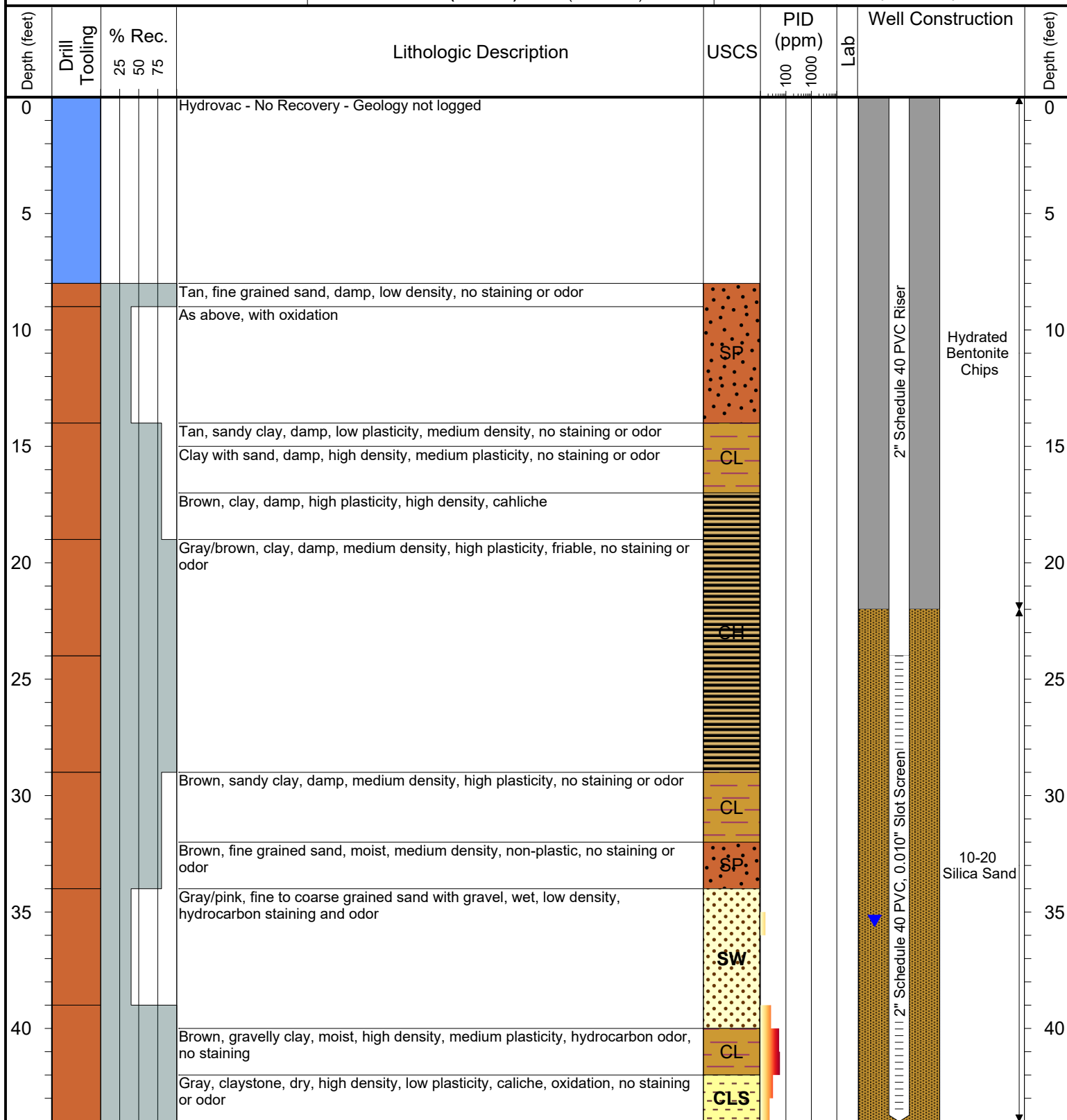
SURFACE COMPLETION: Flush Mount

NORTHING (CO STATE PLANE): 40.11779481

EASTING (CO STATE PLANE): -104.66883224

CASING ELEVATION (FT. AMSL): 4897.23

GROUND ELEVATION (FT. AMSL): 4897.52



Drilling / Sample Method:

Macro-Core Hydrovac CME Core Barrel
Expendable Well Tip Hand Auger

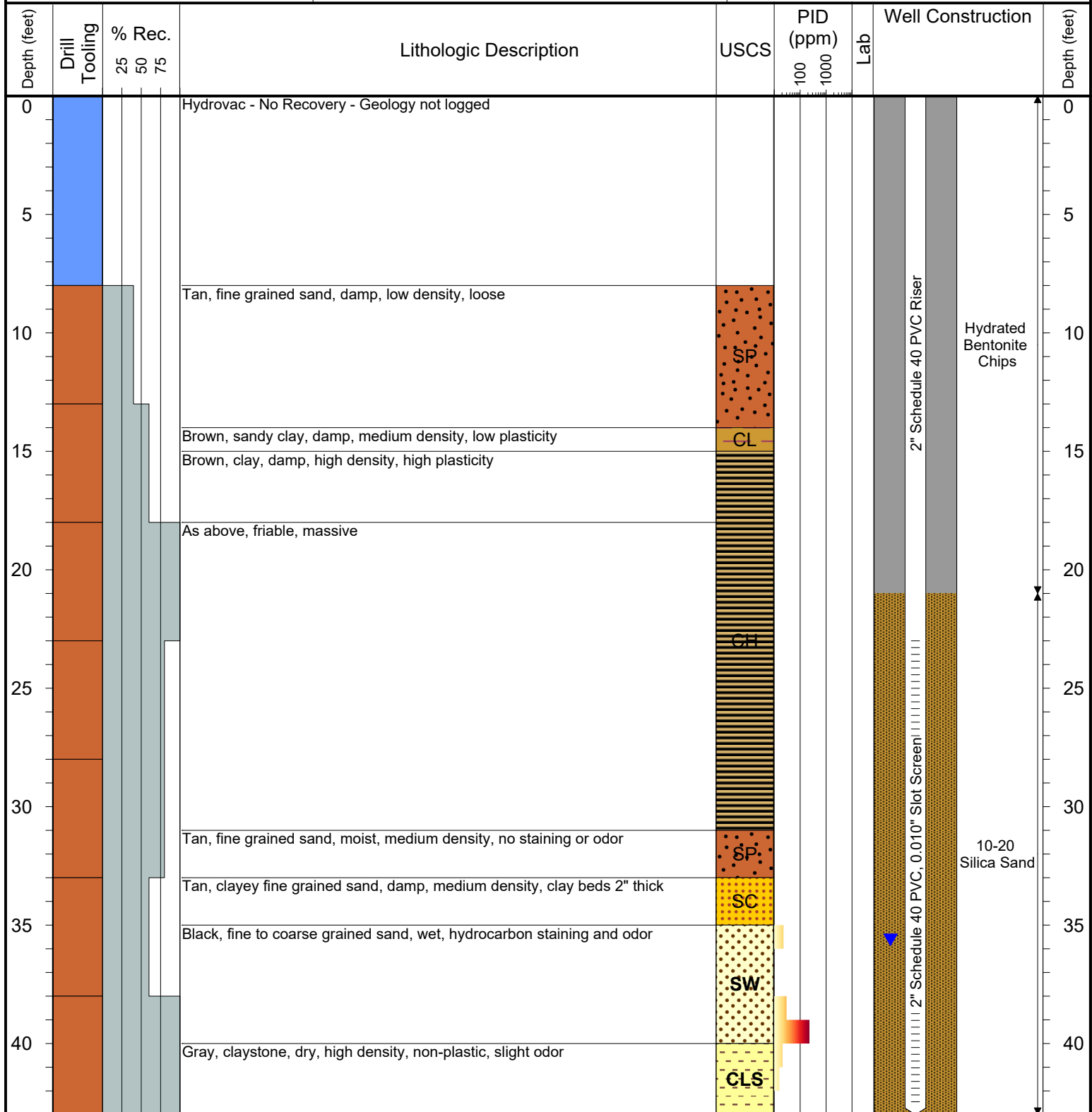
Laboratory Sample Types:

Geotechnical Lab Geotechnical & Analytical Chemistry Lab
Analytical Chemistry Lab



6899 Pecos Street, Unit C
Denver, Colorado 80221

CLIENT: Kerr-McGee Oil & Gas Onshore LP	Ernie F Adamson GU-62N65W/21SWSW Production Facility
LOGGED BY: Alexander Hamilton	
PROJECT MANAGER: Robert Cornez	BORING / WELL ID: BH12
DRILLING CONTRACTOR: Site Services Drilling, LLC	
DRILLING EQUIPMENT: CME 55	SURFACE COMPLETION: Stick up: 2.33'
DRILL BIT SIZE (INCHES): 8"	NORTHING (CO STATE PLANE): 40.117670387
DATE STARTED - COMPLETED: 8/13/2018	EASTING (CO STATE PLANE): -104.66880606
TOTAL WELL DEPTH (FT. BGS): 43	CASING ELEVATION (FT. AMSL): 4900.15
DEPTH TO WATER (FT. BGS): 35.62 (8/24/2018) ▼	GROUND ELEVATION (FT. AMSL): 4897.82



Drilling / Sample Method:

Macro-Core
 Hydrovac
 CME Core Barrel
 Expendable Well Tip
 Hand Auger

Laboratory Sample Types:

Geotechnical Lab
 Analytical Chemistry Lab
 Geotechnical & Analytical Chemistry Lab



6899 Pecos Street, Unit C
Denver, Colorado 80221

CLIENT: Kerr-McGee Oil & Gas Onshore LP

LOGGED BY: Alexander Hamilton

PROJECT MANAGER: Robert Cornez

DRILLING CONTRACTOR: Site Services Drilling, LLC

DRILLING EQUIPMENT: CME 55

DRILL BIT SIZE (INCHES): 8"

DATE STARTED - COMPLETED: 8/13/2018 - 8/14/2018

TOTAL WELL DEPTH (FT. BGS): 44

DEPTH TO WATER (FT. BGS): 36.37 (8/24/2018) ▼

Ernie F Adamson GU-62N65W/21SWSW
Production Facility

BORING / WELL ID: BH13

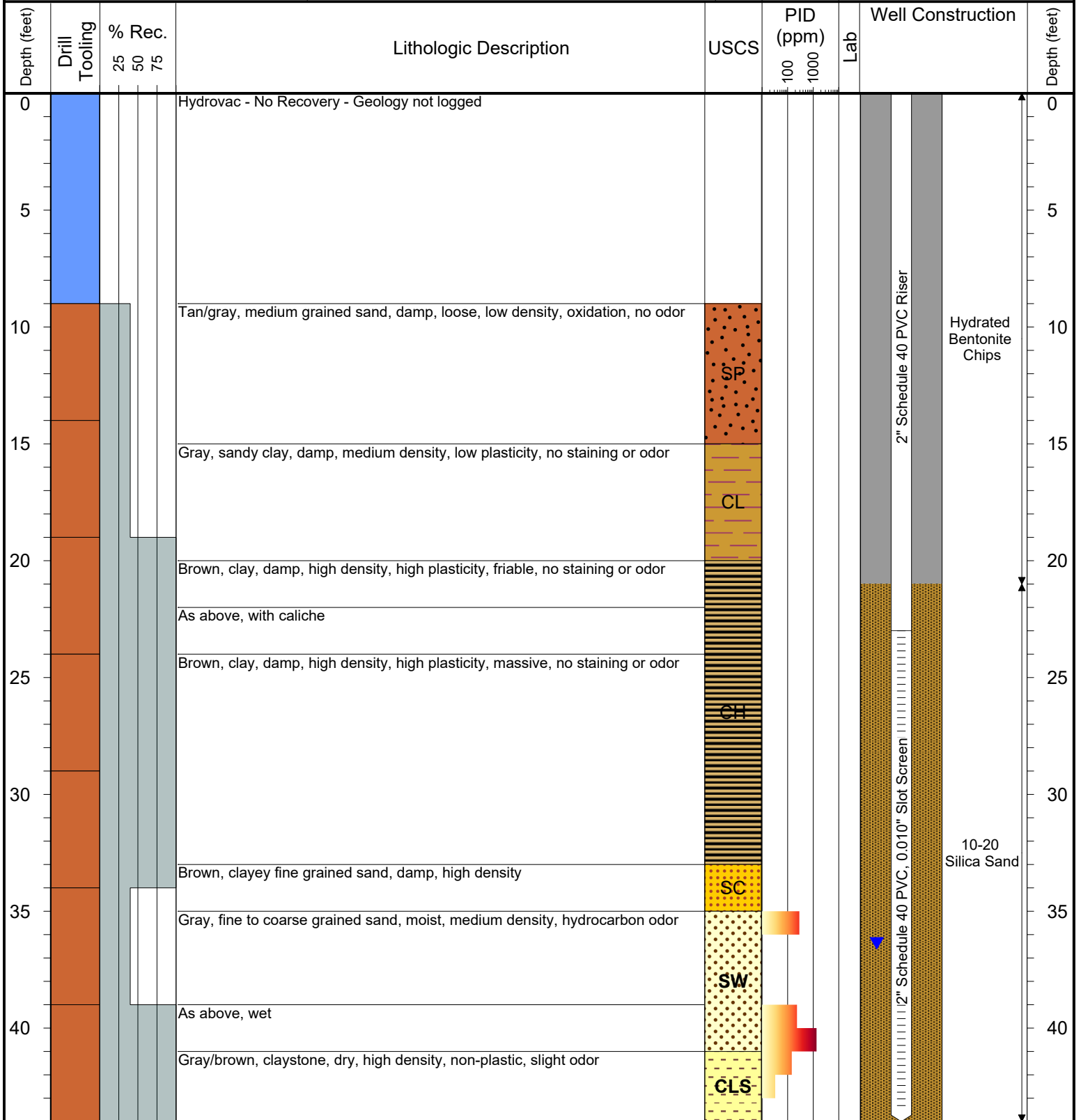
SURFACE COMPLETION: Stick up: 2.50'

NORTHING (CO STATE PLANE): 40.117545116

EASTING (CO STATE PLANE): -104.66877644

CASING ELEVATION (FT. AMSL): 4901.12

GROUND ELEVATION (FT. AMSL): 4898.62



Drilling / Sample Method:

Macro-Core Hydrovac CME Core Barrel
Expendable Well Tip Hand Auger

Laboratory Sample Types:

Geotechnical Lab Geotechnical & Analytical Chemistry Lab
Analytical Chemistry Lab



6899 Pecos Street, Unit C
Denver, Colorado 80221

CLIENT: Kerr-McGee Oil & Gas Onshore LP

LOGGED BY: Alexander Hamilton

PROJECT MANAGER: Robert Cornez

DRILLING CONTRACTOR: Site Services Drilling, LLC

DRILLING EQUIPMENT: CME 55

DRILL BIT SIZE (INCHES): 8"

DATE STARTED - COMPLETED: 8/13/2018 - 8/14/2018

TOTAL WELL DEPTH (FT. BGS): 43

DEPTH TO WATER (FT. BGS): 36.72 (8/24/2018) ▼

Ernie F Adamson GU-62N65W/21SWSW
Production Facility

BORING / WELL ID: BH14

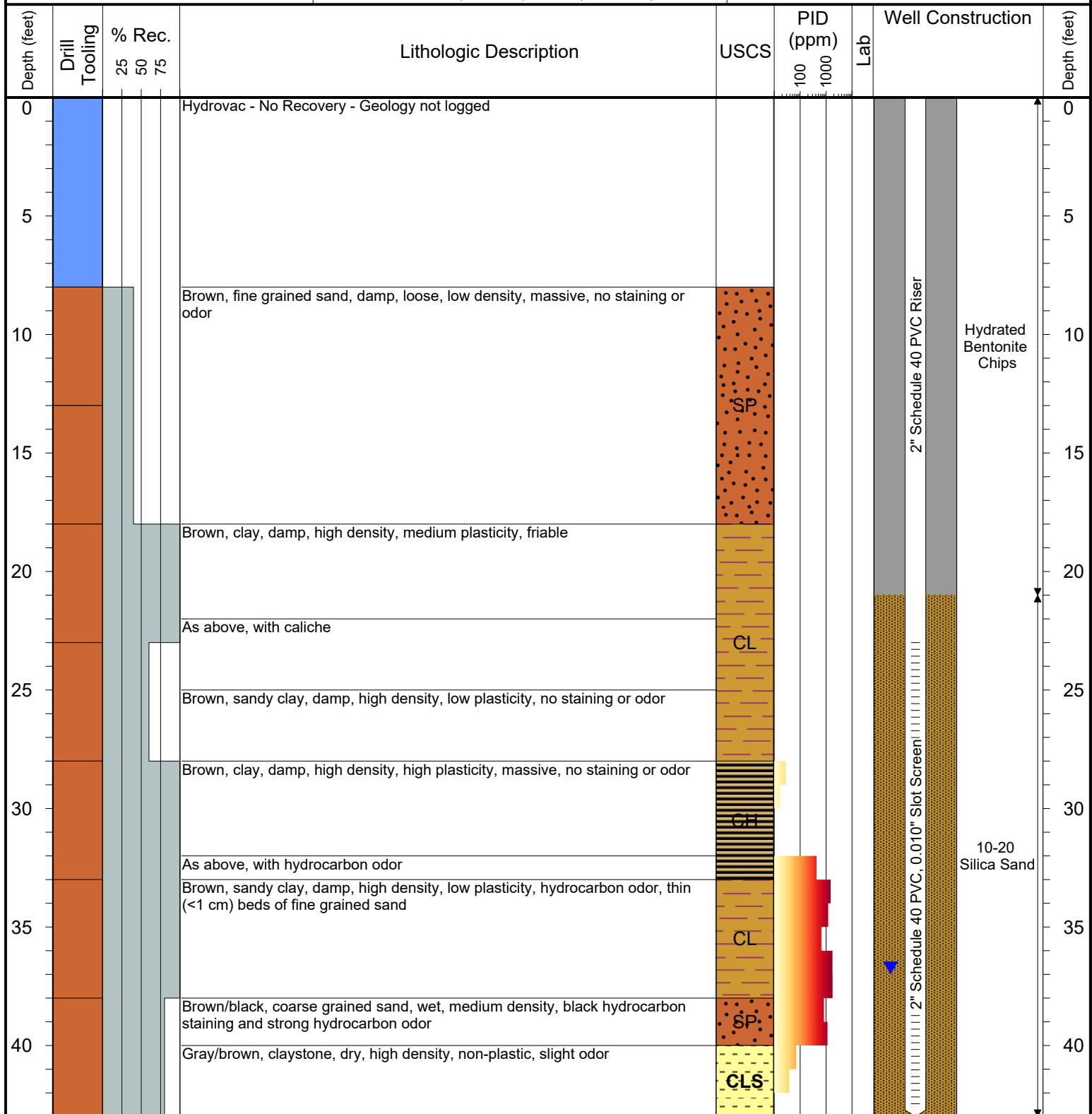
SURFACE COMPLETION: Stick up: 2.45'

NORTHING (CO STATE PLANE): 40.117394166

EASTING (CO STATE PLANE): -104.66881469

CASING ELEVATION (FT. AMSL): 4901.55

GROUND ELEVATION (FT. AMSL): 4899.1



Drilling / Sample Method:

Macro-Core Hydrovac CME Core Barrel
Expendable Well Tip Hand Auger

Laboratory Sample Types:

Geotechnical Lab Geotechnical & Analytical Chemistry Lab
Analytical Chemistry Lab



6899 Pecos Street, Unit C
Denver, Colorado 80221

CLIENT: Kerr-McGee Oil & Gas Onshore LP

LOGGED BY: Alexander Hamilton

PROJECT MANAGER: Robert Cornez

DRILLING CONTRACTOR: Site Services Drilling, LLC

DRILLING EQUIPMENT: CME 55

DRILL BIT SIZE (INCHES): 8"

DATE STARTED - COMPLETED: 8/13/2018 - 8/14/2018

TOTAL WELL DEPTH (FT. BGS): 43

DEPTH TO WATER (FT. BGS): 35.58 (8/24/2018) ▼

Ernie F Adamson GU-62N65W/21SWSW
Production Facility

BORING / WELL ID: BH15

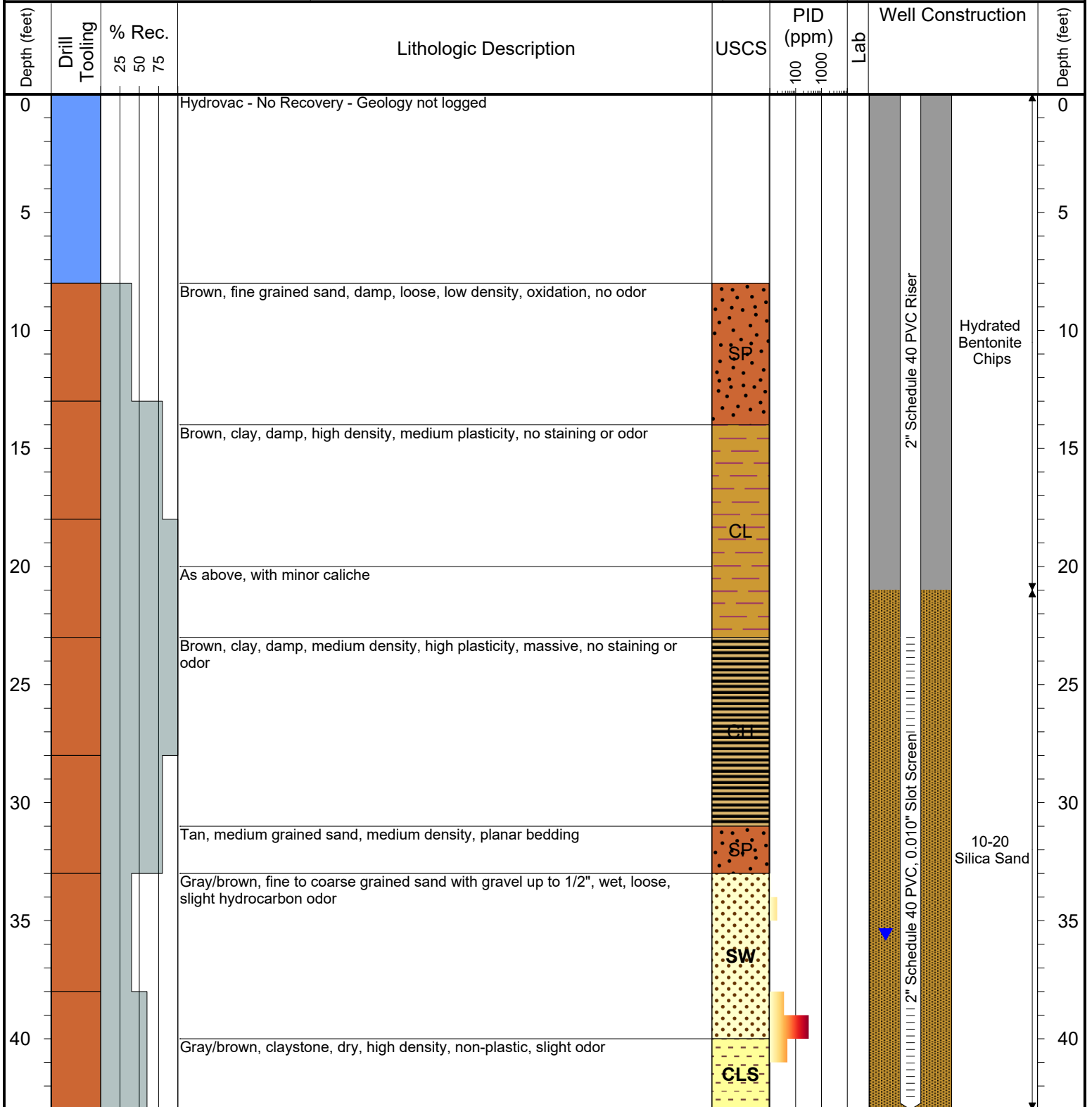
SURFACE COMPLETION: Flush Mount

NORTHING (CO STATE PLANE): 40.11782143

EASTING (CO STATE PLANE): -104.66895853

CASING ELEVATION (FT. AMSL): 4897.28

GROUND ELEVATION (FT. AMSL): 4897.69



Drilling / Sample Method:

Macro-Core Hydrovac CME Core Barrel
Expendable Well Tip Hand Auger

Laboratory Sample Types:

Geotechnical Lab Geotechnical & Analytical Chemistry Lab
Analytical Chemistry Lab



6899 Pecos Street, Unit C
Denver, Colorado 80221

CLIENT: Kerr-McGee Oil & Gas Onshore LP

LOGGED BY: Alexander Hamilton

PROJECT MANAGER: Robert Cornez

DRILLING CONTRACTOR: Site Services Drilling, LLC

DRILLING EQUIPMENT: CME 55

DRILL BIT SIZE (INCHES): 8"

DATE STARTED - COMPLETED: 8/13/2018 - 8/15/2018

TOTAL WELL DEPTH (FT. BGS): 43

DEPTH TO WATER (FT. BGS): 32.54 (8/24/2018) ▼

Ernie F Adamson GU-62N65W/21SWSW
Production Facility

BORING / WELL ID: BH16

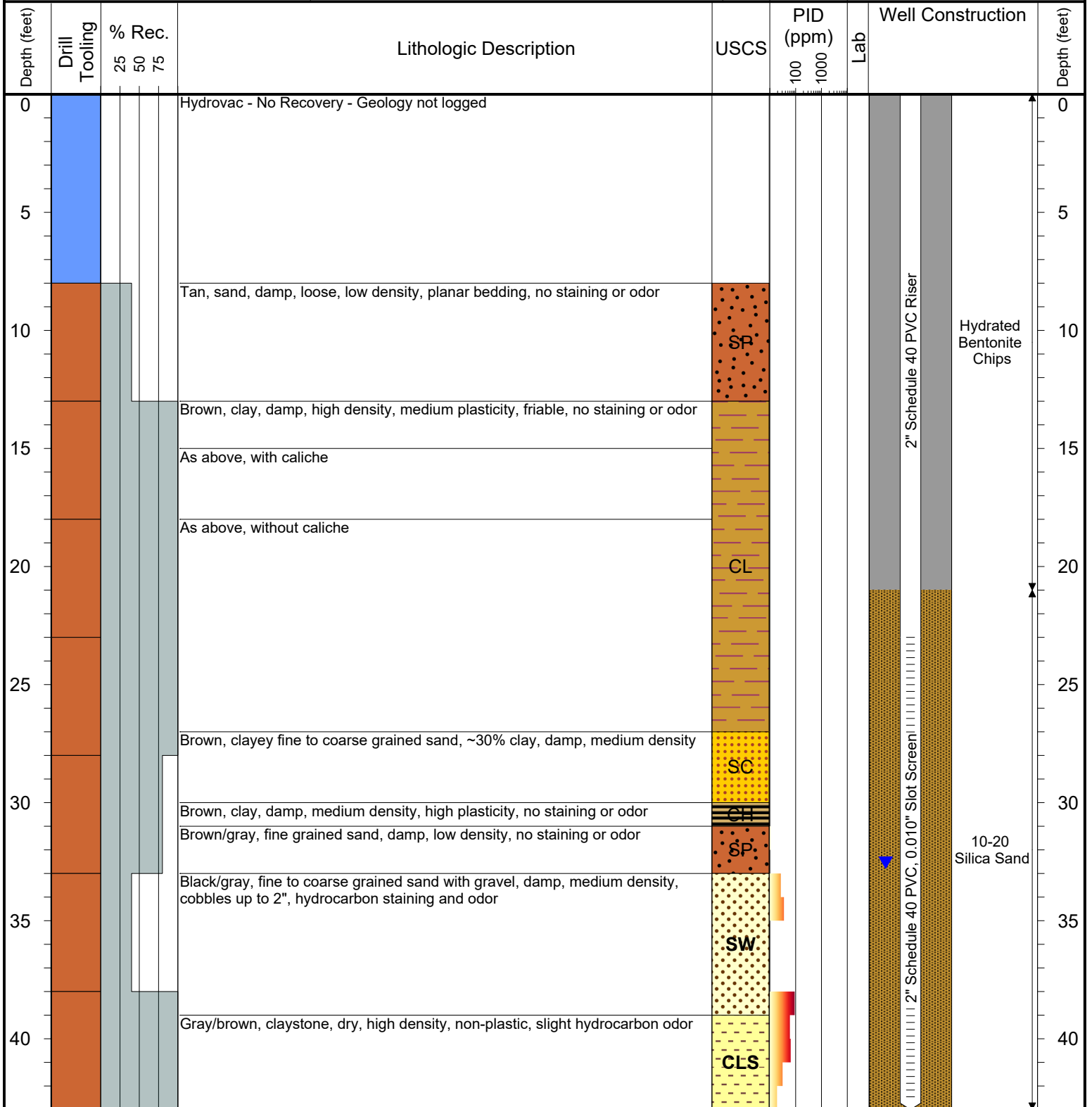
SURFACE COMPLETION: Stick up: 2.43'

NORTHING (CO STATE PLANE): 40.117778341

EASTING (CO STATE PLANE): -104.66925384

CASING ELEVATION (FT. AMSL): 4897.08

GROUND ELEVATION (FT. AMSL): 4894.65



Drilling / Sample Method:

Macro-Core Hydrovac CME Core Barrel
Expendable Well Tip Hand Auger

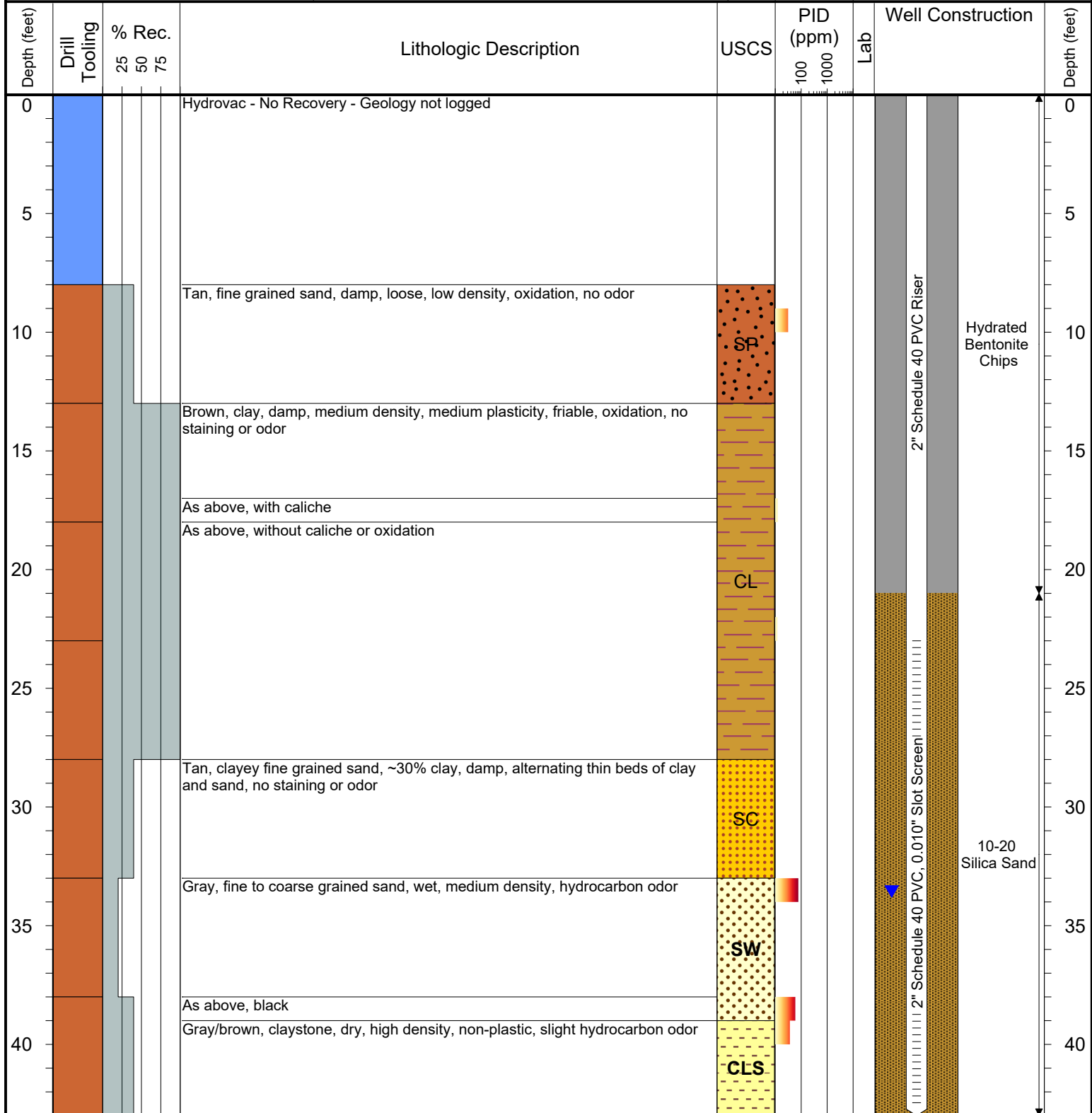
Laboratory Sample Types:

Geotechnical Lab Geotechnical & Analytical Chemistry Lab
Analytical Chemistry Lab



6899 Pecos Street, Unit C
Denver, Colorado 80221

CLIENT: Kerr-McGee Oil & Gas Onshore LP	Ernie F Adamson GU-62N65W/21SWSW Production Facility
LOGGED BY: Alexander Hamilton	
PROJECT MANAGER: Robert Cornez	BORING / WELL ID: BH17
DRILLING CONTRACTOR: Site Services Drilling, LLC	
DRILLING EQUIPMENT: CME 55	SURFACE COMPLETION: Stick up: 2.55'
DRILL BIT SIZE (INCHES): 8"	NORTHING (CO STATE PLANE): 40.117817621
DATE STARTED - COMPLETED: 8/13/2018 - 8/15/2018	EASTING (CO STATE PLANE): -104.6690958
TOTAL WELL DEPTH (FT. BGS): 43	CASING ELEVATION (FT. AMSL): 4898.21
DEPTH TO WATER (FT. BGS): 33.56 (8/24/2018) ▼	GROUND ELEVATION (FT. AMSL): 4895.66



Drilling / Sample Method:

- Macro-Core
- Hydrovac
- CME Core Barrel
- Expendable Well Tip
- Hand Auger

Laboratory Sample Types:

- Geotechnical Lab
- Analytical Chemistry Lab
- Geotechnical & Analytical Chemistry Lab