

Location Name: H 26-22 Pad

Location Number: 454886



Photo 1 Location Entrance



Location Name: H 26-22 Pad

Location Number: 454886



Photo 2 Storm Water BMP's East Side of Location



Location Name: H 26-22 Pad

Location Number: 454886



Photo 3 Location Overview from Entrance



Location Name: H 26-22 Pad

Location Number: 454886



Photo 4 Safety Station on North Side of Location



Location Name: H 26-22 Pad

Location Number: 454886

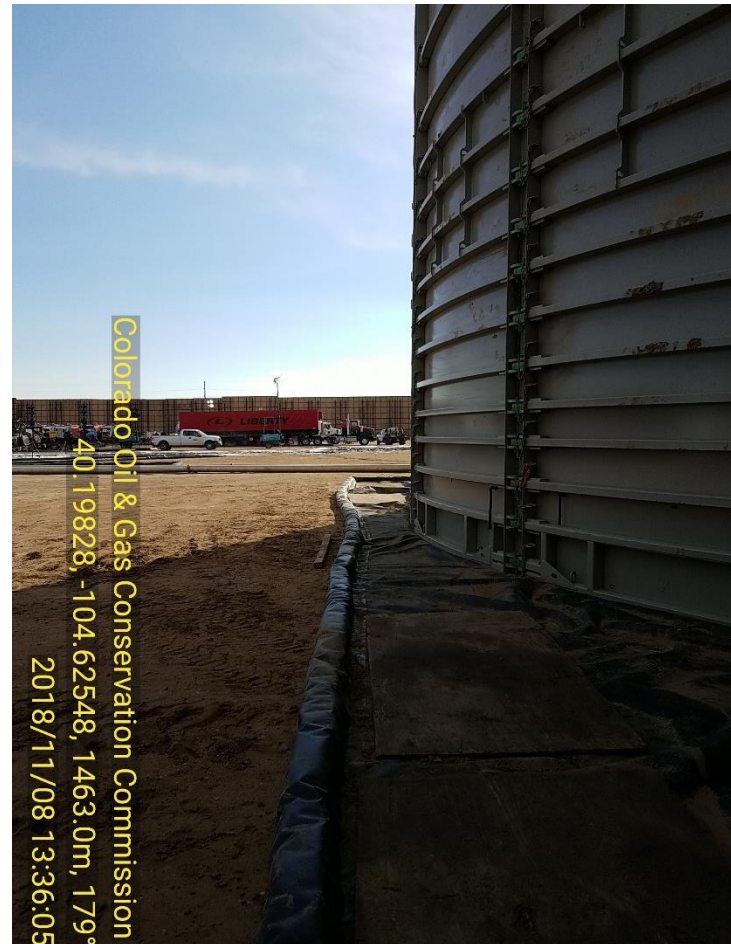


Photo 5 Fresh Water Vessel with Secondary Containment (NW Corner of Location)



Location Name: H 26-22 Pad

Location Number: 454886

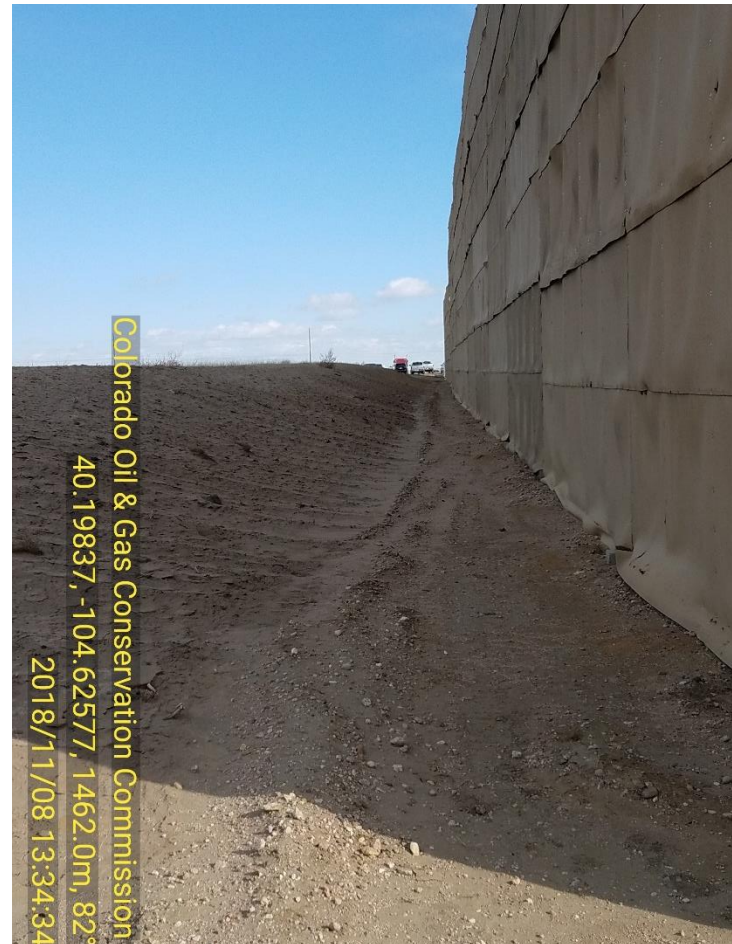


Photo 6 Waddles and Ditch on North Side of Location



Location Name: H 26-22 Pad

Location Number: 454886



Colorado Oil & Gas Conservation Commission
40.19837, -104.62577, 1462.0m, 82°
2018/11/08 13:34:34

Photo 7 Sound Wall Northside



COLORADO
Oil & Gas Conservation
Commission
Department of Natural Resources

Location Name: H 26-22 Pad

Location Number: 454886



Photo 8 Fresh Water Containment Overview



Location Name: H 26-22 Pad

Location Number: 454886

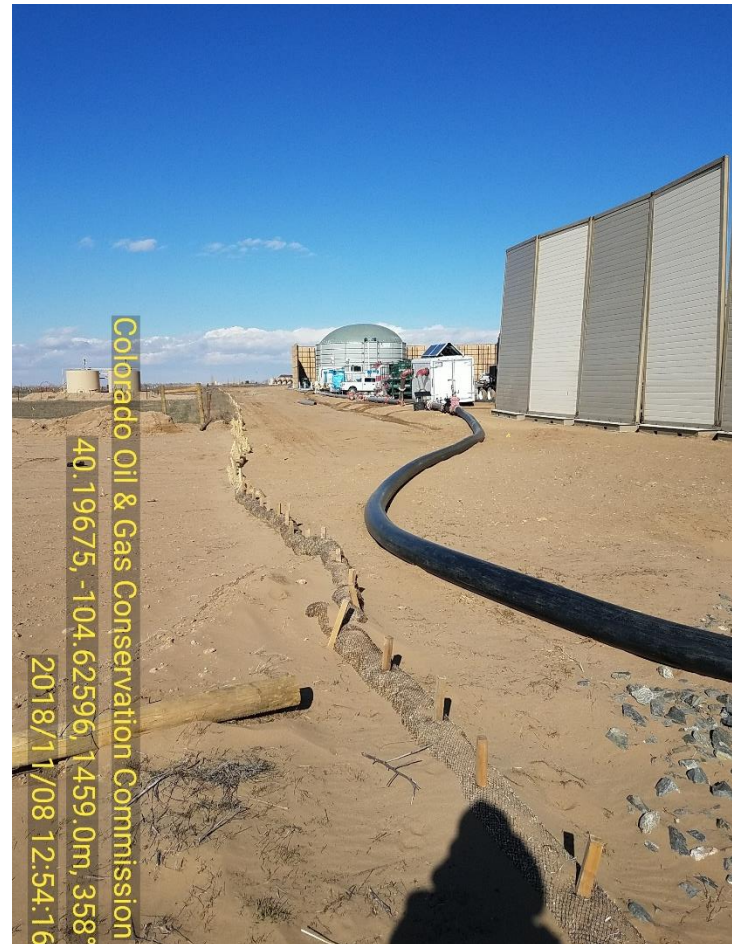


Photo 9 West Side of Location. Fresh Water Supply Line and Storm Water BMP's



COLORADO
Oil & Gas Conservation
Commission
Department of Natural Resources

Location Name: H 26-22 Pad

Location Number: 454886



Photo 10 South Side of Location, Freshwater Source Line and Storm Water BMP's



Location Name: H 26-22 Pad

Location Number: 454886



Photo 11 Wellheads (6) from West Side

