



Corporate Office
1775 Sherman Street, #3000
Denver, Colorado 80203
303.860.5800
www.pdce.com

October 22, 2018

Noble Energy, Inc.
1625 Broadway St., Suite 2200
Denver, CO 80202

Re: **Stimulation Setback Consent, Rule 317.s.**
Erwin 3N
SWSE Section 27, T5N-R64W
Weld County, Colorado

To Whom It May Concern,

PDC Energy, Inc. ("PDC") hereby requests a Statewide Fracture Stimulation Setback waiver from Noble Energy, Inc., the offset operator of the following wells that are estimated to be closer than 150' to the subject well(s).

PDC Proposed Well	Noble Encroached Upon Well		3D Interwell Distance
Erwin 3N	Herbst 27-2	05-123-12651	71'
	Herbst 27-6	05-123-12943	50'

Per COGCC Rule 317s., No portion of a proposed wellbore's treated interval shall be located within 150 feet of an existing (producing, shut-in, or temporarily abandoned) or permitted oil and gas wellbore's treated interval belonging to another operator without the signed written consent of the operator of the encroached upon wellbore. The signed written consent shall be attached to the Application for Permit-to-Drill, Form 2 for the proposed wellbore.

If Noble Energy, Inc. is in agreement to waive the Rule 317.s requirement, please sign the waiver in the space provided below.

Sincerely,

Venessa Chase
Regulatory Supervisor (Wattenberg)
PDC Energy, Inc.

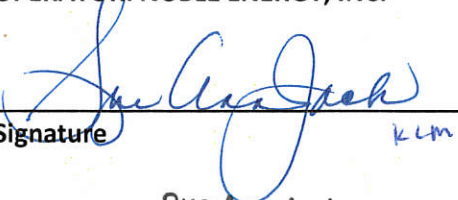


Corporate Office
1775 Sherman Street, #3000
Denver, Colorado 80203
303.860.5800
www.pdce.com

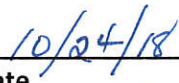
As the offset operator or a designated representative thereof, I understand that the subject well will be potentially drilled and stimulated within 150' of the offset well listed above. I hereby give my consent for the subject well(s).

OPERATOR: NOBLE ENERGY, INC.

Signature


kcm

Date



Sue Ann Jack
Attorney-In-Fact

Name, Title

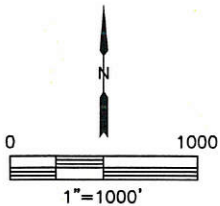
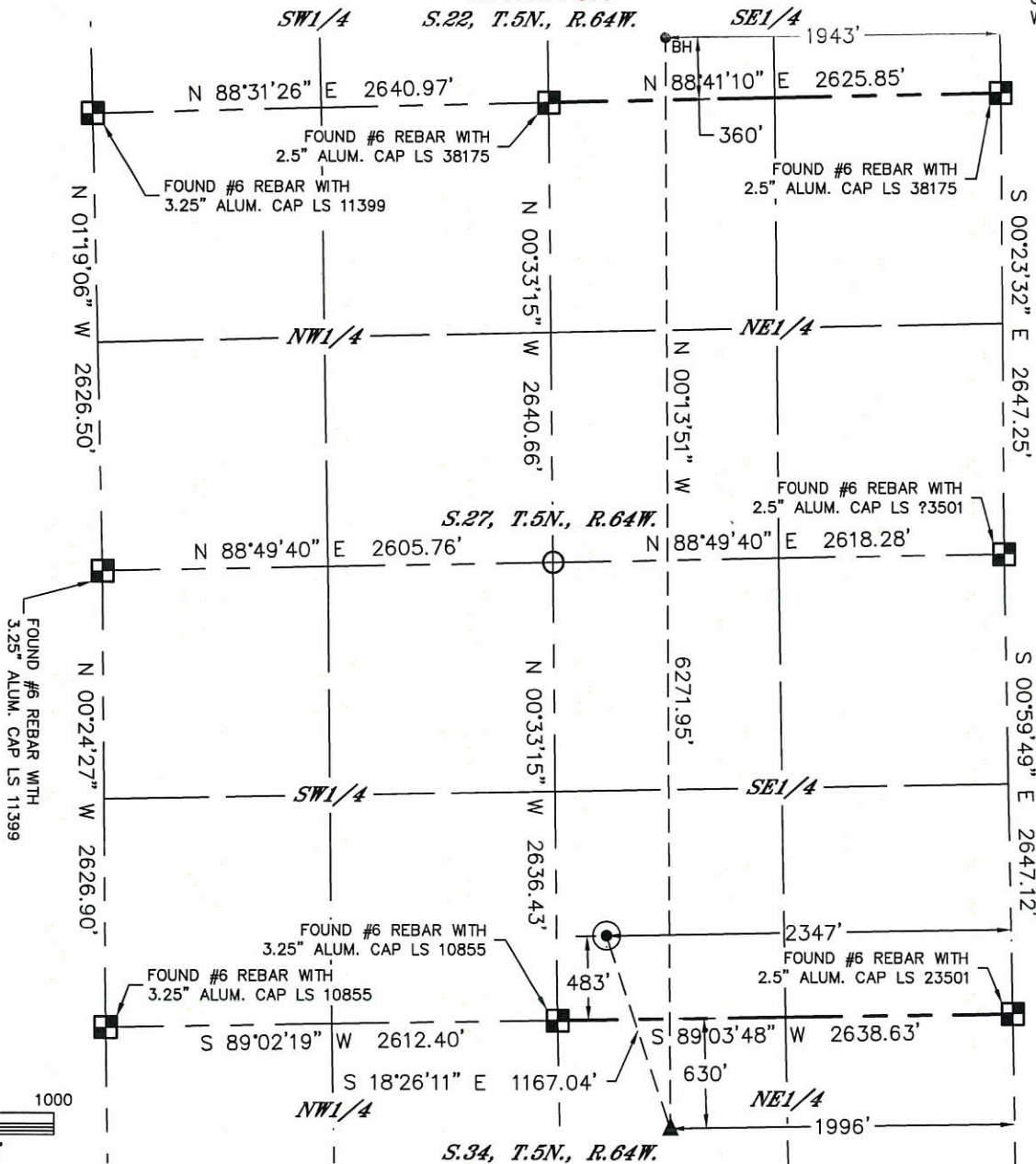


Lat40, Inc. 6250 W. 10th Street, Unit 2, Greeley, CO 970-515-5294

WELL LOCATION CERTIFICATE

ERWIN 3N

SECTION: 27
TOWNSHIP: 5N
RANGE: 64W
6TH. P.M.
WELD COUNTY, CO



- LEGEND**
- = ALIQUOT MONUMENT AS DESCRIBED
 - = CALCULATED POSITION
 - = SURFACE HOLE LOCATION (SHL)
 - ▲ = ENTRY POINT LOCATION (EP)
 - _{BH} = BOTTOM HOLE LOCATION (BHL)
 - ⊙ = EXISTING WELL
 - ⊙ = ABANDONED WELL

- NOTE:**
- 1) Bearings shown are Grid Bearings of the Colorado State Plane Coordinate System, North Zone, North American Datum 1983. The lineal dimensions as contained herein are based upon the "U.S. Survey Foot."
 - 2) Distances to section lines measured at 90 degrees from said section lines.
 - 3) Ground elevations are based on an observed GPS elevation (NAVD 1988 DATUM).
 - 4) Latitude and Longitude shown are (NAD 83 DATUM).
 - 5) IMPROVEMENTS: See LOCATION DRAWING for all visible improvements within 500' of oil and gas location.
 - 6) This map does not represent a boundary survey.

SHEET 1 OF 3

Brian T. Brinkman—On behalf of Lat40, Inc.
Colorado Licensed Professional Land Surveyor No. 38175
DATE: 8/14/2017
PROJECT#: 2016106

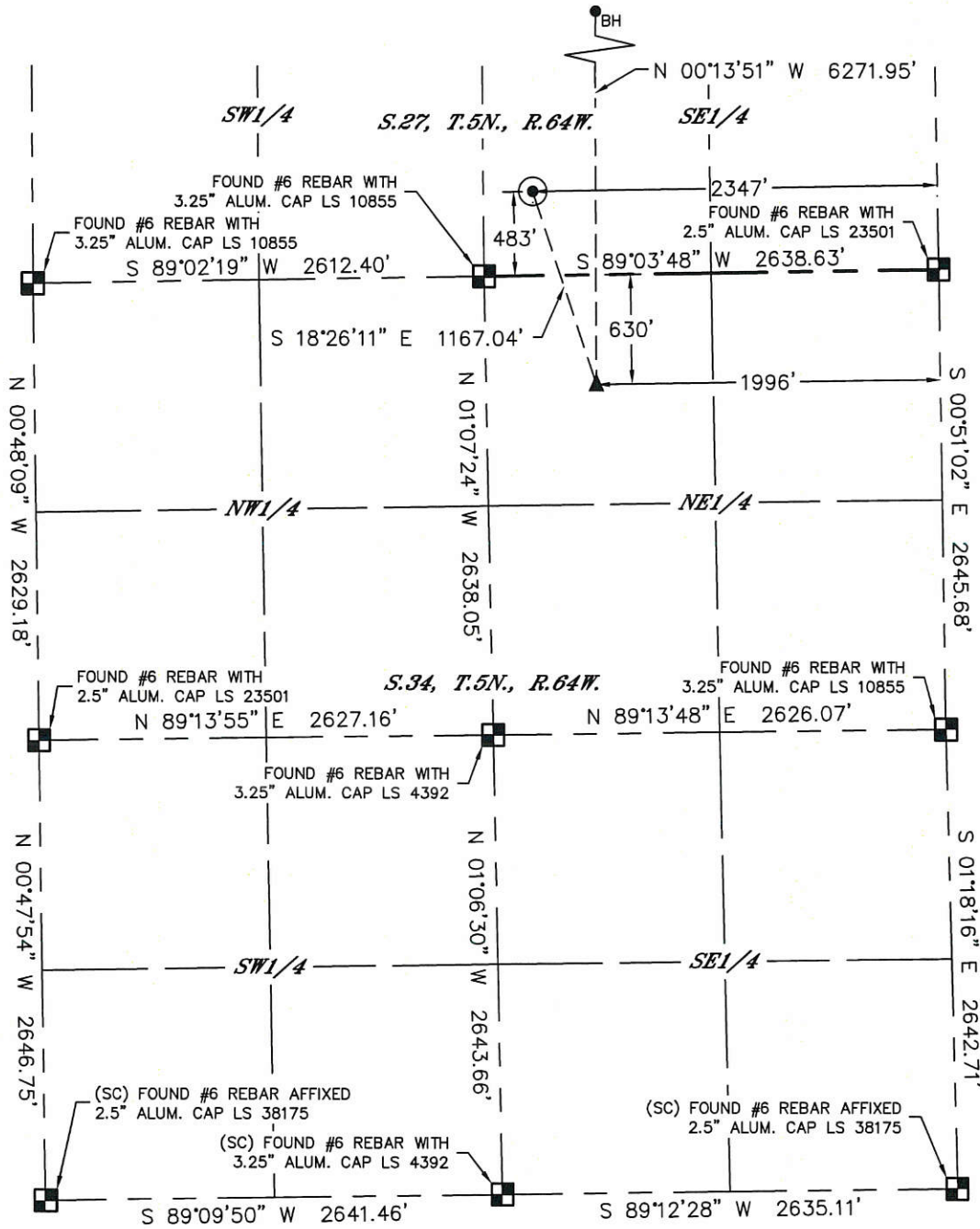


Lat40°, Inc. 6250 W. 10th Street, Unit 2, Greeley, CO 970-515-5294

WELL LOCATION CERTIFICATE

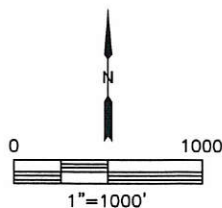
ERWIN 3N

SECTION: 27
TOWNSHIP: 5N
RANGE: 64W
6TH. P.M.
WELD COUNTY, CO



LEGEND

- = ALIQUOT MONUMENT AS DESCRIBED
- = CALCULATED POSITION
- ⊙ = SURFACE HOLE LOCATION (SHL)
- ▲ = ENTRY POINT LOCATION (EP)
- _{BH} = BOTTOM HOLE LOCATION (BHL)
- ⊕ = EXISTING WELL
- ⊖ = ABANDONED WELL



SHEET 2 OF 3

Brian T. Brinkman—On behalf of Lat40°, Inc.
Colorado Licensed Professional Land Surveyor No. 38175
DATE: 8/14/2017
PROJECT#: 2016106

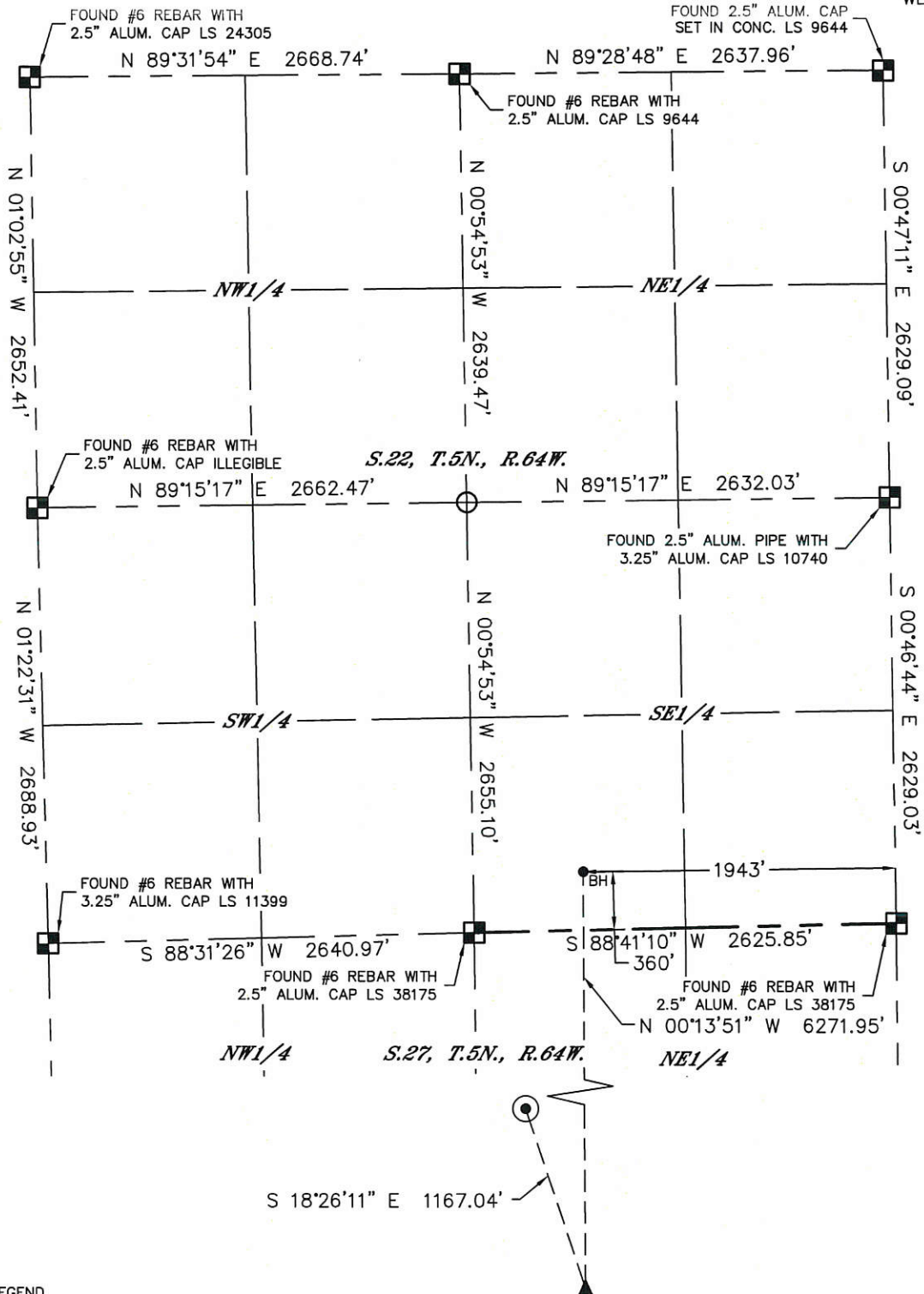


Lat40°, Inc. 6250 W. 10th Street, Unit 2, Greeley, CO 970-515-5294

WELL LOCATION CERTIFICATE

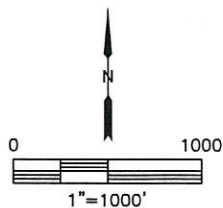
ERWIN 3N

SECTION: 27
TOWNSHIP: 5N
RANGE: 64W
6TH. P.M.
WELD COUNTY, CO



LEGEND

- = ALIQUOT MONUMENT AS DESCRIBED
- = CALCULATED POSITION
- = SURFACE HOLE LOCATION (SHL)
- ▲ = ENTRY POINT LOCATION (EP)
- _{BH} = BOTTOM HOLE LOCATION (BHL)
- ⊕ = EXISTING WELL
- ⊖ = ABANDONED WELL



SHEET 3 OF 3

Brian T. Brinkman—On behalf of Lat40°, Inc.
Colorado Licensed Professional Land Surveyor No. 38175
DATE: 8/14/2017
PROJECT#: 2016106