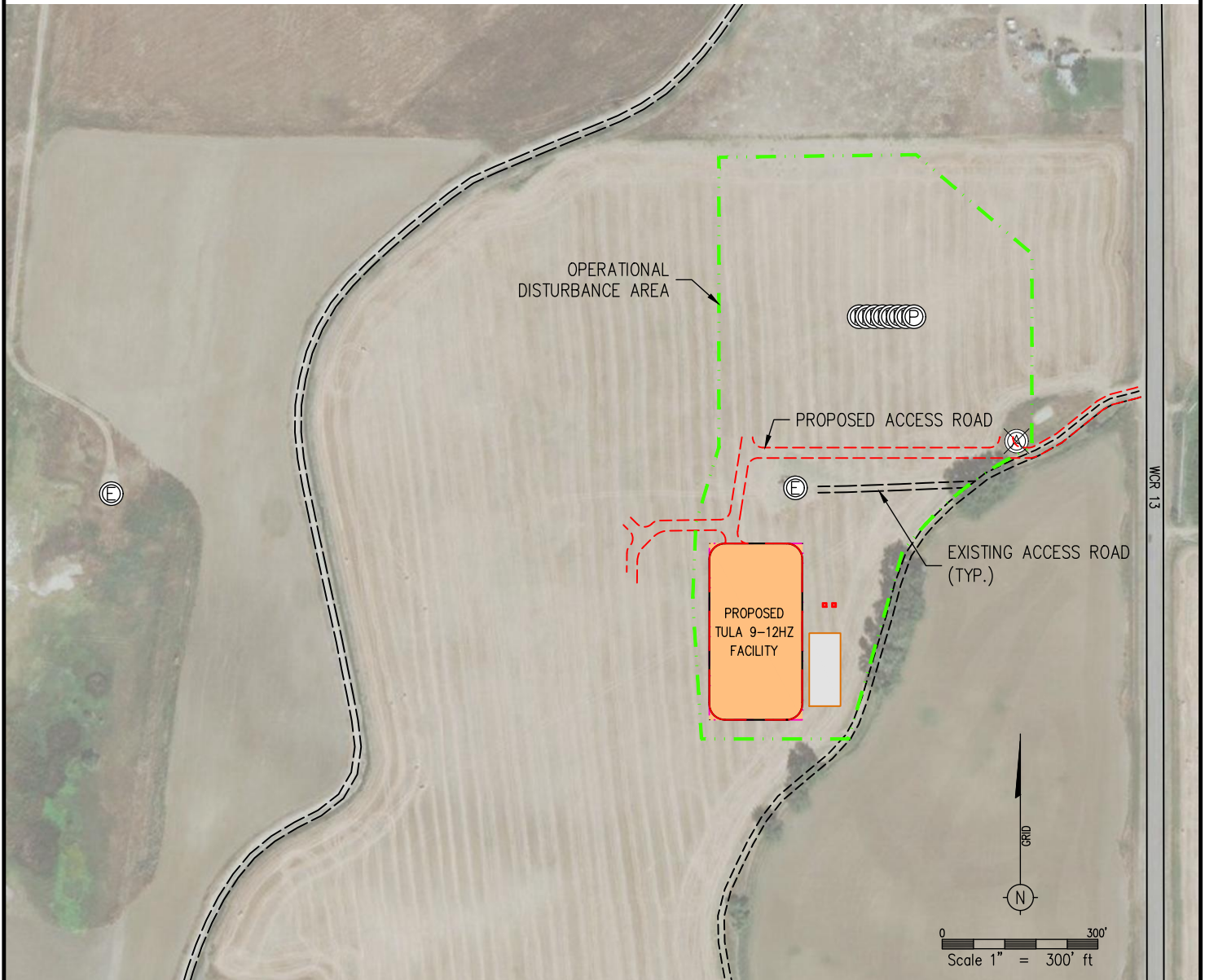






ACCESS ROAD DRAWING TULA 9-12HZ PAD

ACCESS MAP
NE 1/4 SE1/4 SECTION 12, TOWNSHIP 1 NORTH, RANGE 68 WEST, 6TH P.M.



-  EXISTING WELL
-  PROPOSED WELL
-  PROPOSED FACILITY
-  DISTURBANCE AREA

WELL PAD — TULA 9-12HZ PAD

DATA SOURCES:
—AERIAL COURTESY OF BING

**Kerr-McGee Oil &
Gas Onshore L.P.**
1099 18th Street
Denver, Colorado 80202

DRAWN BY	CHECKED BY
JMH	AAD
INITIAL SUBMITTAL	3/13/2018
REVISED	
DRAWING SIZE	8.5" X 11"
JOB NO.	ANAO1N68W12-01
SHEET	1 OF 1

BASELINE
Engineering - Planning - Surveying

4007 S. LINCOLN AVENUE, SUITE 406 • LOVELAND, COLORADO 80537
P: 970.353.7600 • F: 970.353.7601 • www.baselinecorp.com