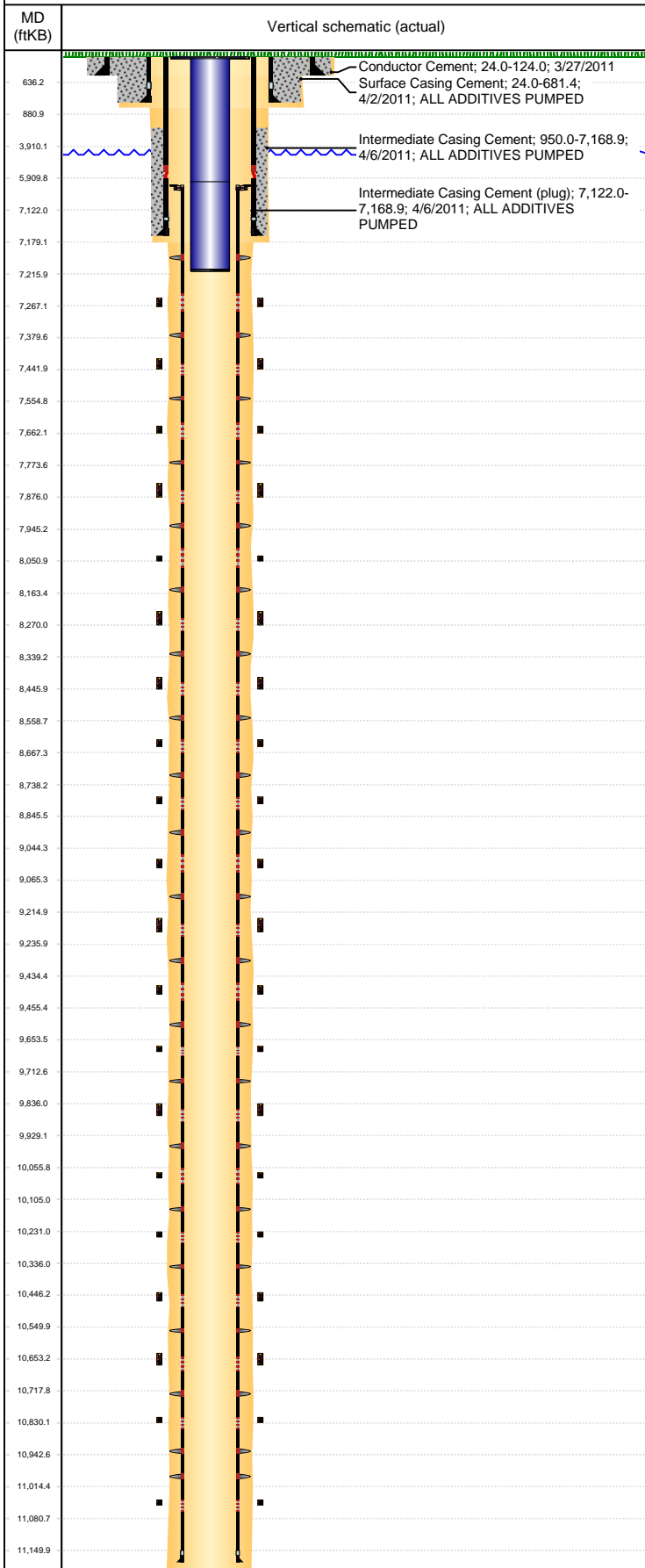


Well Name: SPIKE STATE D16-99HZ

HORIZONTAL - ORIGINAL HOLE, 11/8/2018 12:09:49 PM



Well Header									
API 05-123-32821		Business Unit DJ BASIN			District 15		Well Config HORIZONTAL		
KB - GL / MSL (ft... 24.00		Spud Date 4/1/2011		P & A Date		Well Production Status PR			SoRT No
Comment									
Surface Location (Congressional)									
Qtr 3 NE	Qtr 4 SE	Section 16	Twنشp 3	Twنش... N	Range 64	Rng E/... W	Actual Latitude (°) 40.22183815	Actual Longitude (°) -104.54708485	
Wellbore Sections									
Section Des			Size (in)			Act Top, MD (ftKB)		Act Btm, MD (ftKB)	
CONDUCTOR			18 1/2			24		124	
SURFACE			13 3/4			124		692	
INTERMEDIATE			8 3/4			692		7,179	
PRODUCTION			6 1/8			7179		11,167	
Casing Strings									
Csg Des		Run Date	OD (in)	Wt/Len (lb/ft)	Grade	Top, MD (ftKB)	MD (ftKB)		
Conductor		3/27/2011	16	75.00	J-55	24.0	124.0		
Surface		4/2/2011	9 5/8	36.00	J-55	24.0	681.4		
Intermediate		4/6/2011	7	26.00	P-110	24.0	7,168.9		
Liner		4/9/2011	4 1/2	11.60	P-110	6,043.0	11,152.0		
Cement									
Des				Start Date		Top (ftKB)		Btm (ftKB)	
Conductor Cement				3/27/2011		24.0		124.0	
Surface Casing Cement				4/2/2011		24.0		681.4	
Intermediate Casing Cement				4/6/2011		950.0		7,168.9	
Zone Statuses									
Zone Name	Status Date	Status	Fluid Type	Job			Prod Method		
NIOBRARA	5/16/2011	PR		DRILLING/COMPLETION - ORIGINAL, 3/29/2011...					
Stimulation Intervals									
Zone			Start Date			Top (ftKB)		Btm (ftKB)	
NIOBRARA, ORIGINAL HOLE			5/9/2011			7,266.0		7,267.0	
			5/9/2011			7,441.0		7,442.0	
			5/9/2011			7,661.0		7,662.0	
			5/9/2011			7,875.0		7,876.0	
			5/9/2011			8,050.0		8,051.0	
			5/9/2011			8,269.0		8,270.0	
			5/9/2011			8,445.0		8,446.0	
			5/9/2011			8,665.0		8,666.0	
			5/9/2011			8,840.0		8,841.0	
			5/9/2011			9,060.0		9,061.0	
			5/9/2011			9,230.0		9,231.0	
			5/9/2011			9,450.0		9,451.0	
			5/9/2011			9,669.0		9,670.0	
			5/9/2011			9,836.0		9,837.0	
			5/9/2011			10,056.0		10,057.0	
			5/9/2011			10,231.0		10,232.0	
			5/9/2011			10,446.0		10,447.0	
			5/9/2011			10,653.0		10,654.0	
			5/9/2011			10,829.0		10,830.0	
			5/9/2011			11,073.0		11,074.0	
Other In Hole									
Run Date		Des				OD (in)	Top (ftKB)	Btm (ftKB)	
Logs									
Date		Type				Top, MD (ftKB)		Btm, MD (ftKB)	
3/22/2011		FMI							
3/22/2011		CALIPER LOG							
4/8/2011		LWD GR				6,025.0		11,166.0	
4/9/2011		MUD LOG				6,000.0		11,167.0	
4/19/2011		CBL/CCL/GR				24.0		6,080.0	