



Corporate Office
1775 Sherman Street, #3000
Denver, Colorado 80203
303.860.5800
www.pdce.com

October 23, 2018

State of Colorado, Oil & Gas Conservation Commission
Attn: Director
1120 Lincoln Street, Suite 801
Denver, CO 80203

Re: **30 Day Certification Letter – Rule 318Ae**
Erwin 5C
SWSE Section 27, T5N-R64W
Weld County, Colorado

Dear Director,

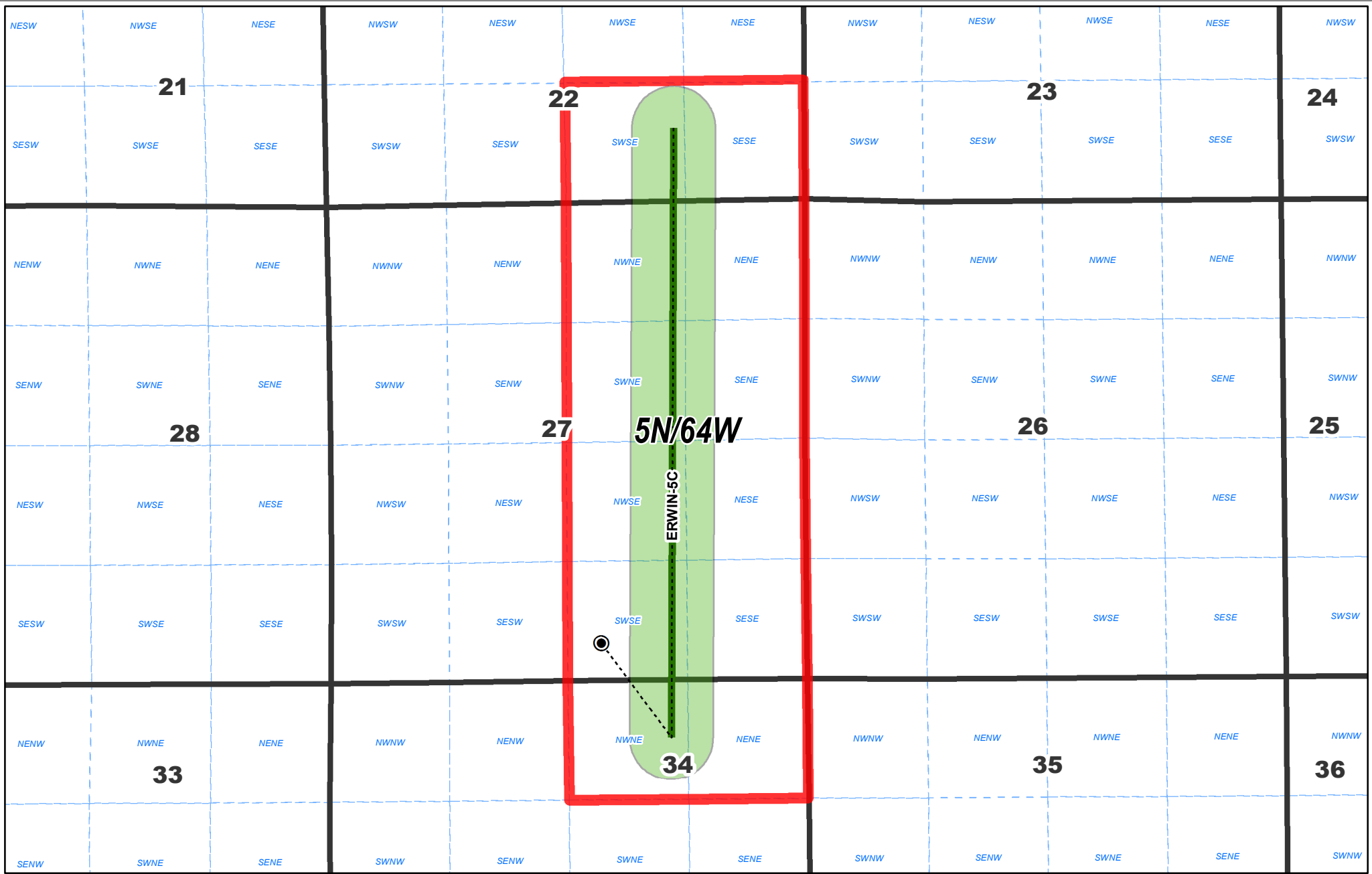
PDC Energy, Inc. ("PDC") hereby certifies to the Director that a thirty (30-day) notice has been given by certified mail to all owners in the proposed wellbore spacing unit consisting of T5N-R64W Section 22: S2SE, Section 27: E2, Section 34: N2NE, 480 acres. We have not received any objections to such well location or proposed spacing unit, therefore, PDC hereby requests the Director to approve the well.

If you should have any questions or concerns regarding this permit, please contact the undersigned at (303) 318-6102.

Sincerely,

A handwritten signature in blue ink that reads "Venessa Chase".



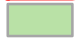
Venessa Chase
Regulatory Supervisor (Wattenberg)
PDC Energy, Inc.



**DJ Preliminary Proposed Spacing Unit
ERWIN 5C**

Date: 10/22/2018

Legend

-  Townships
-  Sections
-  Qtr Qtr (Weld Cty)
-  Preliminary Proposed Spacing Unit
-  460' Foot Wellbore Buffer
-  Spaced Wellbore

Disclaimer:
PDC Energy, Inc. makes no representation or warranty regarding the accuracy or completeness of this map, which is being provided as a courtesy only. PDC Energy, Inc. expressly disclaims all liability and responsibility for any representation, warranty, statement or depiction in this map, whether express, statutory or implied, as to the content, character or nature of any information contained in this map, including, but not limited to, the leasehold acreage positions, well locations and statuses or any other information depicted. Any conclusions derived from this map are at the sole cost, risk and expense of the user.
© 2014 PDC Energy, Inc. All Rights Reserved.

