

HALLIBURTON

iCem[®] Service

EXTRACTION OIL & GAS-EBUS

For: Shawn McIntyre

Date: Saturday, August 11, 2018

Rinn Valley East N17-20-6N

Job Date: Saturday, August 11, 2018

Sincerely,

Adam Covington

Legal Notice

Disclaimer:

All information in this report is provided subject to the terms and conditions which govern the services provided by Halliburton. Halliburton personnel use their best efforts in gathering information and their best judgment in interpreting it, but any interpretation, research, analysis or recommendation furnished by Halliburton are opinions based upon inferences from measurements and empirical relationships and assumptions, which inferences and empirical relationships and assumptions are not infallible, and with respect to which professionals in the industry may differ. iCem 3D Displacement results are used to understand how fluids intermix during a cement job. Simulation and 3D displacement results are not intended as and should not be used as a replacement for bond logs in determining top of cement. Current 3D model calculations are known to model more volume than the input volume for standard cases due to known calculation improvements required. For rotational cases, the modeled volume will be impacted by the same calculations impacting the standard cases, as well as additional constraints imposed to make the calculation time required operationally feasible. Therefore, until further notice, 3D displacement results should not be used for replacement of a bond log, or used as an identifier of top of cement. HALLIBURTON IS UNABLE TO GUARANTEE THE ACCURACY OF ANY CHART INTERPRETATION, RESEARCH ANALYSIS, OR JOB RECOMMENDATION and any interpretation or recommendation is not for use of or reliance upon by any third party. The customer has full responsibility for any of its decisions which are based on the information provided in this report.

Table of Contents

1.0 Real-Time Job Summary 7

 1.1 Job Event Log7

2.0 Attachments..... 10

 2.1 Rinn Valley East N17-20-6N-Custom Results.png.....10

3.0 Custom Graphs..... 11

 3.1 Custom Graph.....11

The Road to Excellence Starts with Safety

Sold To #: 369404		Ship To #: 3892410		Quote #:		Sales Order #: 0905049924					
Customer: EXTRACTION OIL & GAS -				Customer Rep: Shawn McIntyre							
Well Name: RINN VALLEY EAST			Well #: N17-20-6N		API/UWI #: 05-123-47319-00						
Field: WATTENBERG		City (SAP): FIRESTONE		County/Parish: WELD		State: COLORADO					
Legal Description: SW SE-17-2N-68W-814FSL-1773FEL											
Contractor:				Rig/Platform Name/Num: Cartel 11							
Job BOM: 7521 7521											
Well Type: HORIZONTAL OIL											
Sales Person: HALAMERICA\HX38199				Srvc Supervisor: Adam Covington							
Job											
Formation Name											
Formation Depth (MD)		Top		Bottom							
Form Type				BHST							
Job depth MD		1614ft		Job Depth TVD							
Water Depth				Wk Ht Above Floor							
Perforation Depth (MD)		From		To							
Well Data											
Description	New / Used	Size in	ID in	Weight lbm/ft	Thread	Grade	Top MD ft	Bottom MD ft	Top TVD ft	Bottom TVD ft	
Casing	0	9.625	8.921	36	8 RD	J-55	0	1614	0	0	
Open Hole Section			13.5				0	1615	0	0	
Tools and Accessories											
Type	Size in	Qty	Make	Depth ft		Type	Size in	Qty	Make		
Guide Shoe	9.625			1614		Top Plug	9.625	1	HES		
Float Shoe	9.625					Bottom Plug	9.625		HES		
Float Collar	9.625					SSR plug set	9.625		HES		
Insert Float	9.625					Plug Container	9.625	1	HES		
Stage Tool	9.625					Centralizers	9.625		HES		
Fluid Data											
Stage/Plug #: 1											
Fluid #	Stage Type	Fluid Name			Qty	Qty UoM	Mixing Density lbm/gal	Yield ft3/sack	Mix Fluid Gal	Rate bbl/min	Total Mix Fluid Gal
1	Red Dye Spacer	Red Dye Spacer			10	bbl	8.33			4	
Fluid #	Stage Type	Fluid Name			Qty	Qty UoM	Mixing Density lbm/gal	Yield ft3/sack	Mix Fluid Gal	Rate bbl/min	Total Mix Fluid Gal
2	SwiftCem	SWIFTCM (TM) SYSTEM			550	sack	13.5	1.74		7	9.2
9.20 Gal		FRESH WATER									

Fluid #	Stage Type	Fluid Name	Qty	Qty UoM	Mixing Density lbm/gal	Yield ft3/sack	Mix Fluid Gal	Rate bbl/min	Total Mix Fluid Gal
3	Fresh Water	Fresh Water	121	bbl	8.33			5	
Cement Left In Pipe		Amount	44 ft		Reason			Shoe Joint	
Comment TD-1615 13.5" OH, TP-1614 9 5/8" 36#, FC-1570. WATER-70 DEGREES, PH-7, CHLORIDES-0, SULFATES-0. 20 BBLS OF CEMENT TO SURFACE. GOT 1.5 BBLS BACK FLOATS HELD.									

1.0 Real-Time Job Summary

1.1 Job Event Log

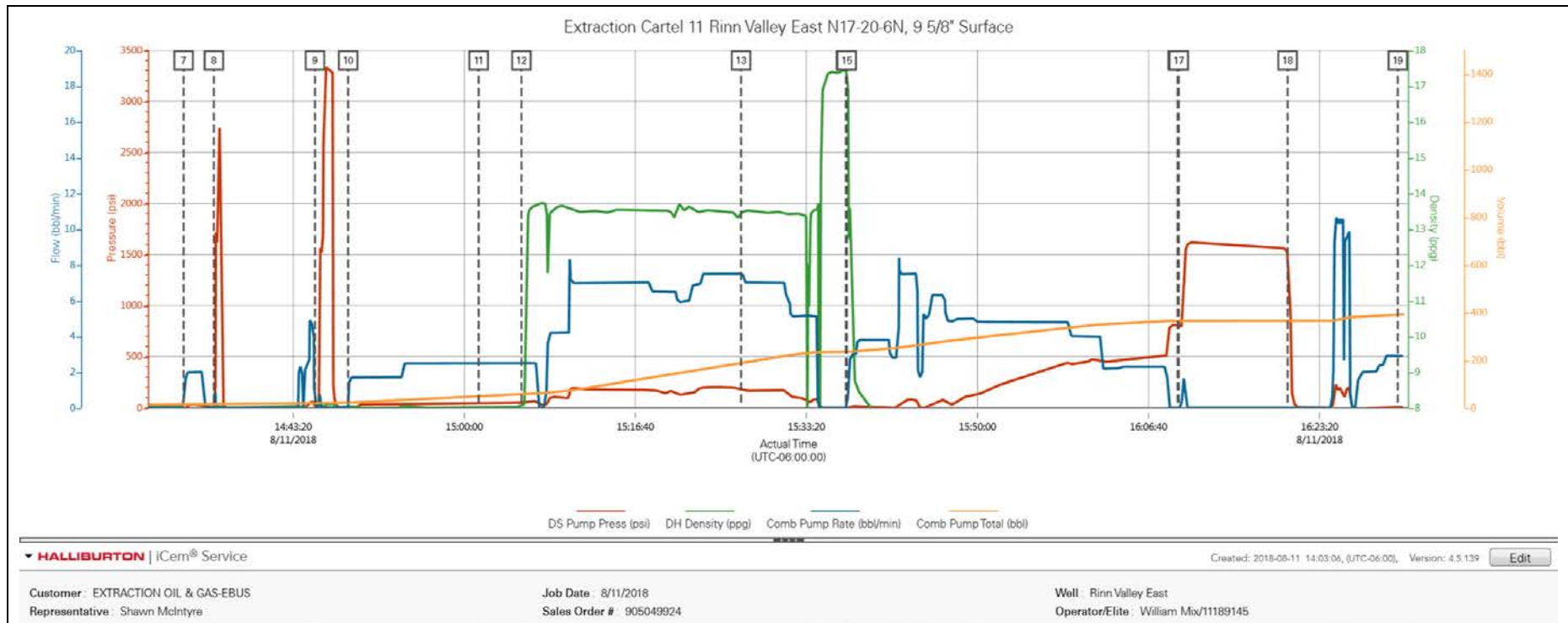
Type	Seq. No.	Activity	Graph Label	Date	Time	Source	DS Pump Press (psi)	DH Density (ppg)	Comb Pump Rate (bbl/min)	Comb Pump Total (bbl)	Comments
Event	1	Call Out	Call Out	8/11/2018	03:30:00	USER					CALLED OUT BY SERVICE COORDINATOR FOR O/L AT 700. CALLED BACK AND CHANGED TO 1100
Event	2	Pre-Convoy Safety Meeting	Pre-Convoy Safety Meeting	8/11/2018	08:20:00	USER					HELD MEETING WITH ALL HES EMPLOYEES IN CONVOY TO DISCUSS DIRECTIONS AND HAZARDS ASSOCIATED WITH DRIVING, ALL FIT TO DRIVE.
Event	3	Depart Shop for Location	Depart Shop for Location	8/11/2018	08:30:00	USER					HELD MEETING WITH ALL PERSONNEL IN CONVOY TO DISCUSS DIRECTIONS AND HAZARDS ASSOCIATED WITH DRIVING, ALL FIT TO DRIVE.
Event	4	Arrive At Loc	Arrive At Loc	8/11/2018	09:30:00	USER					UPON ARRIVAL MET WITH COMPANY MAN TO DISCUSS JOB DETAILS AND CALCULATIONS, PERFORMED HAZARD HUNT AND SITE ASSESSMENT.
Event	5	Safety Meeting - Pre Rig-Up	Safety Meeting - Pre Rig-Up	8/11/2018	13:40:00	USER					DISCUSSED RIGGING UP HAZARDS AND PROCEDURE ACCORDING TO HMS.
Event	6	Safety Meeting - Pre Job	Safety Meeting - Pre Job	8/11/2018	14:10:00	USER	-12.00	0.00	0.20	0.00	HELD SAFETY MEETING WITH ALL JOB ASSOCIATED PERSONNEL TO DISCUSS JOB PROCEDURE, HAZARDS AND STOP WORK AUTHORITY. Water test-

PH-6, Chlor-0, Temp-65. Cement temp-70.											
Event	7	Start Job	Start Job	8/11/2018	14:32:39	COM4	-9.00	7.70	0.00	13.10	FILLED LINES WITH 3BBLS OF FRESH WATER. 2 BPM 50 PSI.
Event	8	Test Lines	Test Lines	8/11/2018	14:35:36	COM4	4.00	7.98	0.00	16.70	WENT TO PRESSURE TEST AND THE FLEX HOSE WAS MISSING A GASKET. HAD TO FILL LINES AGAIN. PERFORMED A 500 KICKOUT TEST, A 5TH GEAR STALL AND THEN TOOK PRESSURE UP TO 3,000 PSI. HELD FOR A COUPLE MINUTES AND BLED OFF.
Event	9	Pressure Test	Pressure Test	8/11/2018	14:45:27	USER	9.00	7.98	0.00	20.90	2ND PRESSURE TEST AFTER BREAKING HOSE AND CHANGING OUT GASKET. 500 KICKOUT, 5TH GEAR STALL AND 3000 PSI.
Event	10	Pump Spacer 1	Pump Spacer 1	8/11/2018	14:48:41	USER	-5.00	8.03	0.00	20.90	PUMPED 30 BBLS OF FRESH WATER SPACER. 3 BPM, 90 PSI. FULL RETURNS.
Event	11	Pump Spacer 2	Pump Spacer 2	8/11/2018	15:01:24	COM4	51.00	8.02	2.50	48.10	PUMPED 10 BBLS OF DYE WATER SPACER AT 4 BPM, 110 PSI.
Event	12	Pump Cement	Pump Cement	8/11/2018	15:05:34	COM4	52.00	8.06	2.50	58.40	PUMPED 170.4 BBLS (550 SKS) OF 13.5#, 1.74y, 9.2wr. CEMENT AT 7 BPM, 245 PSI. FULL RETURNS.
Event	13	Check Weight	Check Weight	8/11/2018	15:26:58	COM4	185.00	13.45	7.50	187.90	USED PRESSURIZED MUD SCALES TO WEIGH UP CEMENT. CEMENT WEIGHED UP AT 13.5#
Event	14	Drop Top Plug	Drop Top Plug	8/11/2018	15:37:11	COM4	-9.00	17.44	0.00	234.60	ADAM COVINGTON DROPPED A HALLIBURTON 9 5/8" TOP PLUG. DRILLER

WITNESSED.											
Event	15	Pump Displacement	Pump Displacement	8/11/2018	15:37:16	COM4	-9.00	17.46	0.00	234.60	PUMPED 121 BBLS OF FRESH WATER DISPLACEMENT. 5 BPM, 70 PSI. HAD TO CHANGE RATE A FEW TIMES DUE TO NOT GETTING WATER AS FAST.
Event	16	Bump Plug	Bump Plug	8/11/2018	16:09:30	COM4	806.00	7.94	0.00	364.80	BUMPED PLUG AT 520 PSI. HELD FOR A MINUTE. THEN WENT INTO CASING TEST.
Event	17	Test Lines	Test Lines	8/11/2018	16:09:37	COM4	802.00	7.94	0.00	364.80	TOOK PRESSURE UP TO 1500 PSI AND HELD FOR 10 MINUTES AS PER CO. MAN.
Event	18	Check Floats	Check Floats	8/11/2018	16:20:13	USER	1500.00	7.98	0.00	365.20	BLD PRESSURE OFF AND GOT 1.5 BBL OF WATER BACK TO THE TRUCK INDICATING THAT THE FLOATS HELD.
Event	19	End Job	End Job	8/11/2018	16:30:57	COM4	6.00	7.93	2.90	389.90	TD-1615 13.5" OH, TP-1614 9 5/8" 36#, FC-1570. WATER-70 DEGREES, PH-7, CHLORIDES-0, SULFATES-0. 20 BBLS OF CEMENT TO SURFACE.
Event	20	Safety Meeting - Pre Rig-Down	Pre-Rig Down Safety Meeting	8/11/2018	16:40:00	USER					DISCUSSED RIGGING DOWN HAZARDS AND PROCEDURE ACCORDING TO HMS.
Event	21	Pre-Convoy Safety Meeting	Pre-Convoy Safety Meeting	8/11/2018	17:20:00	USER					HELD MEETING WITH ALL HES EMPLOYEES IN CONVOY TO DISCUSS DIRECTIONS AND HAZARDS ASSOCIATED WITH DRIVING, ALL FIT TO DRIVE.
Event	22	Depart Location	Depart Location	8/11/2018	17:30:00	USER					PRE JOURNEY MANAGEMENT PRIOR TO DEPARTURE.

2.0 Attachments

2.1 Rinn Valley East N17-20-6N-Custom Results.png



3.0 Custom Graphs

3.1 Custom Graph

