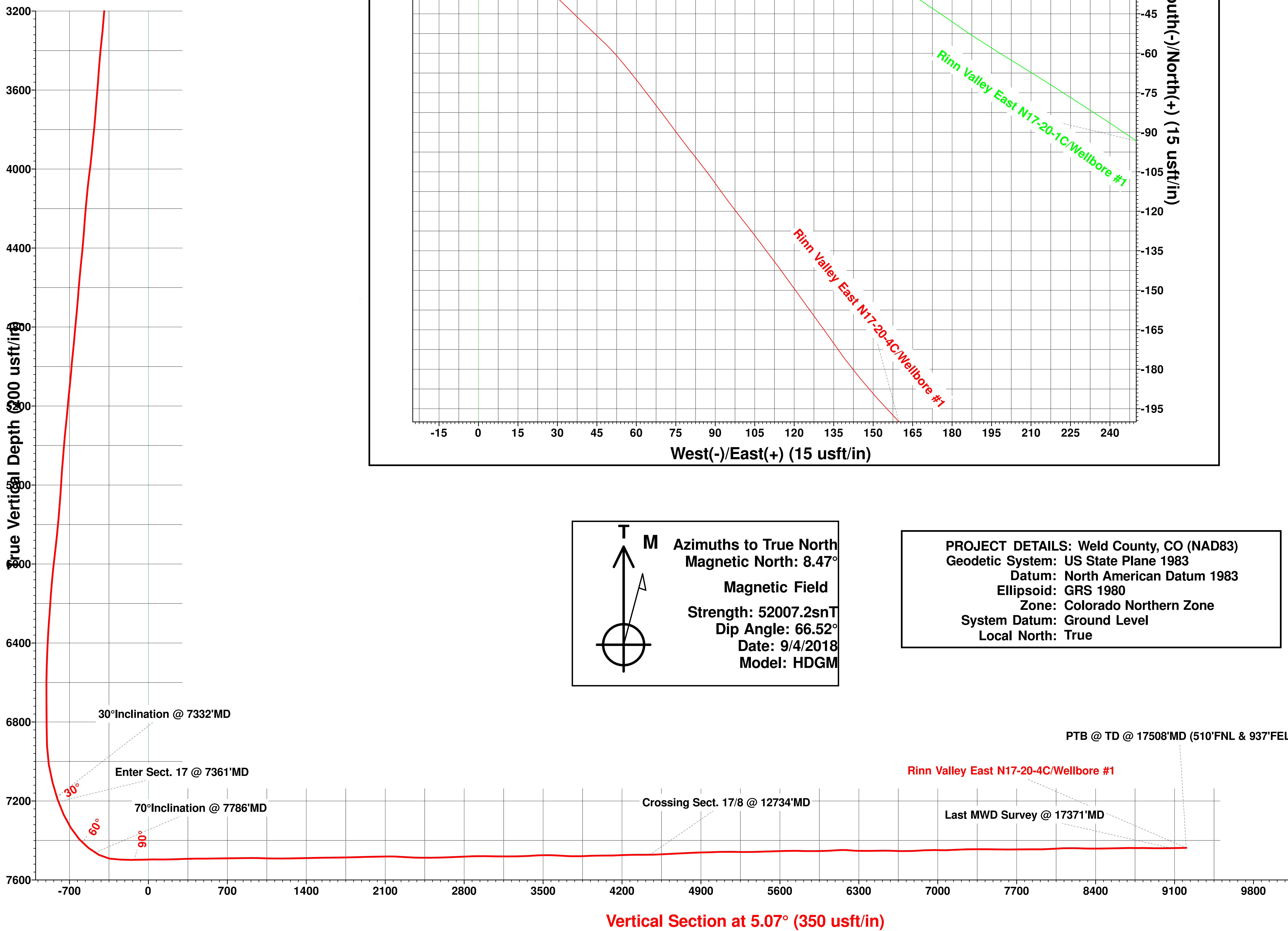


WELL DETAILS: Rinn Valley East N17-20-4C

Ground Elevation:: 4918.10
 RKB Elevation: KB=29 @ 4947.10usft (Patterson #901)
 Rig Name: Patterson #901

Northing	Easting	Latitude	Longitude
1291971.95	3133094.60	40.13388	-105.02399

Extraction Oil & Gas
 Project: Weld County, CO (NAD83)
 Site: Rinn Valley East Pad (Sec. 17-T2N, R68W)
 Well: Rinn Valley East N17-20-4C
 Wellbore: Wellbore #1
 Design: Wellbore #1 (Rinn Valley East N17-20-4C/Wellbore #1)
 Patterson #901



Azimuths to True North
 Magnetic North: 8.47°
Magnetic Field
 Strength: 52007.2snT
 Dip Angle: 66.52°
 Date: 9/4/2018
 Model: HDGM

PROJECT DETAILS: Weld County, CO (NAD83)
 Geodetic System: US State Plane 1983
 Datum: North American Datum 1983
 Ellipsoid: GRS 1980
 Zone: Colorado Northern Zone
 System Datum: Ground Level
 Local North: True

