

HALLIBURTON

iCem® Service

EXTRACTION OIL & GAS-EBUS

United States of America, COLORADO

For: Sean Macentire

Date: Thursday, August 09, 2018

Rinn Valley East N17-20-3N

WELD, Rinn Valley East N17-20-3N

Extraction Rinn Valley East N17-20-3N

Job Date: Thursday, August 09, 2018

Sincerely,

Nick Peterson

Legal Notice

Disclaimer:

All information in this report is provided subject to the terms and conditions which govern the services provided by Halliburton. Halliburton personnel use their best efforts in gathering information and their best judgment in interpreting it, but any interpretation, research, analysis or recommendation furnished by Halliburton are opinions based upon inferences from measurements and empirical relationships and assumptions, which inferences and empirical relationships and assumptions are not infallible, and with respect to which professionals in the industry may differ. iCem 3D Displacement results are used to understand how fluids intermix during a cement job. Simulation and 3D displacement results are not intended as and should not be used as a replacement for bond logs in determining top of cement. Current 3D model calculations are known to model more volume than the input volume for standard cases due to known calculation improvements required. For rotational cases, the modeled volume will be impacted by the same calculations impacting the standard cases, as well as additional constraints imposed to make the calculation time required operationally feasible. Therefore, until further notice, 3D displacement results should not be used for replacement of a bond log, or used as an identifier of top of cement. HALLIBURTON IS UNABLE TO GUARANTEE THE ACCURACY OF ANY CHART INTERPRETATION, RESEARCH ANALYSIS, OR JOB RECOMMENDATION and any interpretation or recommendation is not for use of or reliance upon by any third party. The customer has full responsibility for any of its decisions which are based on the information provided in this report.

Table of Contents

1.0 Real-Time Job Summary 7

 1.1 Job Event Log7

2.0 Attachments..... 11

 2.1 Extraction Rinn Valley East N17-20-3N-Custom Results.png.....11

Sold To #: 369404		Ship To #: 3892499		Quote #:		Sales Order #: 0905049725				
Customer: EXTRACTION OIL & GAS -						Customer Rep: Sean Macentire				
Well Name: RINN VALLEY EAST			Well #: N17-20-3N			API/UWI #: 05-123-47318-00				
Field: WATTENBERG		City (SAP): FIRESTONE		County/Parish: WELD		State: COLORADO				
Legal Description: SW SE-17-2N-68W-898FSL-1771FEL										
Contractor:				Rig/Platform Name/Num: Cartell 11						
Job BOM: 7521 7521										
Well Type: HORIZONTAL OIL										
Sales Person: HALAMERICA\HX38199				Srcv Supervisor: Prince Perez						
Job										
Formation Name										
Formation Depth (MD)		Top		Bottom						
Form Type				BHST						
Job depth MD		1,653'		Job Depth TVD		1,653'				
Water Depth				Wk Ht Above Floor		6,				
Perforation Depth (MD)		From		To						
Well Data										
Description	New / Used	Size in	ID in	Weight lbm/ft	Thread	Grade	Top MD ft	Bottom MD ft	Top TVD ft	Bottom TVD ft
Casing	0	9.625	8.921	36	8 RD	J-55	0	1653	0	1653
Open Hole Section			13.5				0	1653	0	1653
Tools and Accessories										
Type	Size in	Qty	Make	Depth ft		Type	Size in	Qty	Make	
Guide Shoe	9.625	1	Weath	1,653		Top Plug	9.625	1	HES	
Float Shoe	9.625	1	Weath	1,608						
						Plug Container	9.625	1	HES	
Fluid Data										
Stage/Plug #: 1										
Fluid #	Stage Type	Fluid Name	Qty	Qty UoM	Mixing Density lbm/gal	Yield ft3/sack	Mix Fluid Gal	Rate bbl/min	Total Mix Fluid Gal	
1	Red Dye Spacer	Red Dye Spacer	20	bbl	8.33			4		
Stage/Plug #: 2										
Fluid #	Stage Type	Fluid Name	Qty	Qty UoM	Mixing Density lbm/gal	Yield ft3/sack	Mix Fluid Gal	Rate bbl/min	Total Mix Fluid Gal	
2	Cement	SWIFTCM (TM) SYSTEM	550	sack	13.5	1.74	9.2	8	5,060	

Fluid #	Stage Type	Fluid Name	Qty	Qty UoM	Mixing Density lbm/gal	Yield ft3/sack	Mix Fluid Gal	Rate bbl/min	Total Mix Fluid Gal
3	Displacement	Fresh Water	124	bbl	8.33			8	
Cement Left In Pipe		Amount	43 ft		Reason			Shoe Joint	
Mix Water:	pH 7.0	Mix Water Chloride:	0 ppm			Mix Water Temperature:	73 °F		
Cement Temperature:	## °F	Plug Displaced by:	8.33 lb/gal			Disp. Temperature:	73 °F		
Plug Bumped?	Yes	Bump Pressure:	579 psi			Floats Held?	Yes		
Cement Returns:	22 bbls	Returns Density:	13.5 lb/gal			Returns Temperature:	## °F °C		
Comment: Pumped 20 bbls Red dye spacer, 170 bbls Cement, 124 bbls displacement. Cement to surface @ 102 into displacement 22 bbls back to surface.									

1.0 Real-Time Job Summary

1.1 Job Event Log

Type	Seq. No.	Activity	Graph Label	Date	Time	Source	DH Density (ppg)	Comb Pump Rate (bbl/min)	PS Pump Press (psi)	Pump Stg Tot (bbl)	Comments
Event	1	Pre-Convoy Safety Meeting	Pre-Convoy Safety Meeting	8/8/2018	18:00:00	USER					DISCUSSED ROUTES, HAZARDS, AND COMMUNICATION WITH CREW.
Event	2	Crew Leave Yard	Crew Leave Yard	8/8/2018	18:30:00	USER					STARTED JOURNEY MANAGEMENT.
Event	3	Arrive at Location from Service Center	Arrive at Location	8/8/2018	19:00:00	USER					ON LOCATION FROM PREVIOUS JOB. MEET WITH CO. MAN TO DISCUSS JOB; CASING- 9.625" 36 LB/FT @ 1,653.21', 13.5" HOLE 1,653.21", SHOE 45', FRESH WATER DISPLACEMENT, HALLIBURTON TOP PLUG. CASING LANDED @ 04:45 08/09/2018. RIG CIRCULATED BOTTOMS UP.
Event	4	Call Out	Call Out	8/8/2018	21:00:00	USER					CREW CALLED OUT AT 21:00, REQUESTED ON LOCATION 03:00. CREW PICKED UP CEMENT, TOP PLUG, 100 LBS OF SUGAR, 2 LBS RED DYE, FROM FT. LUPTON, CO. BULK TRUCKS 10867096, 10991603, AND ELITE 11189145.

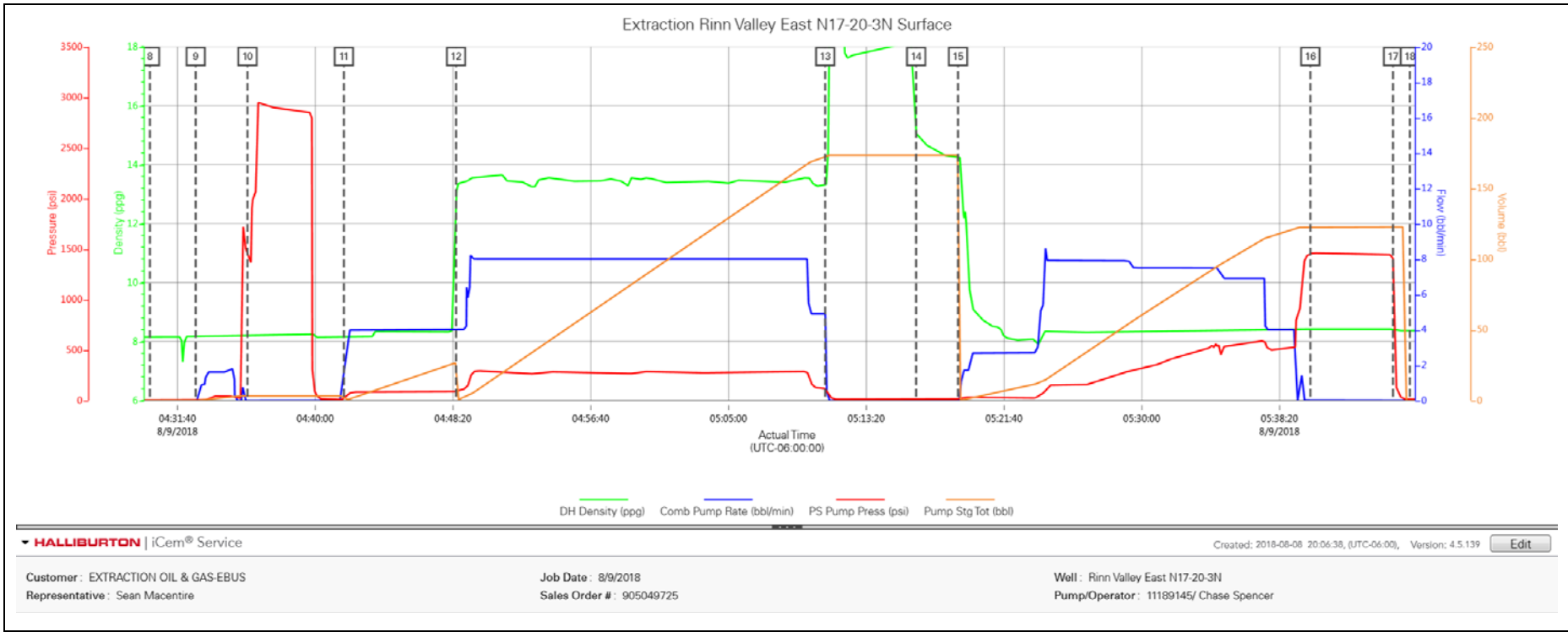
Event	5	Pre-Rig Up Safety Meeting	Pre-Rig Up Safety Meeting	8/9/2018	03:00:00	USER					HAZARD HUNT. DISCUSSED POSSIBLE HAZARDS ASSOCIATED WITH LOCATION, RIG UP AND WEATHER.
Event	6	Rig-Up Equipment	Rig-Up Equipment	8/9/2018	03:30:00	USER					CREW STAGED EQUIPMENT AND RIGGED UP BULK, IRON, AND WATER HOSES TO PERFORM JOB.
Event	7	Safety Meeting - Pre Job	Safety Meeting - Pre Job	8/9/2018	04:15:00	USER	8.16	10.50	414.00	17.30	MEETING WITH HALLIBURTON RIG PERSONNEL WERE NOT INVOLVED IN PRE JOB METING. COMMUNICATED POTENTIAL SAFETY HAZARDS AND JOB DETAILS.
Event	8	Rig-Up Completed	Rig-Down Completed	8/9/2018	04:30:00	USER					
Event	9	Start Job	Start Job	8/9/2018	04:32:46	COM5					BEGIN RECORDING JOB DATA.
Event	10	Test Lines	Test Lines	8/9/2018	04:35:54	COM5					PRESSURE TESTED IRON TO 3,000 PSI. KICKOUTS SET @ 500 PSI, KICKED OUT @ 970 PSI, 5TH GEAR STALL OUT @ 2,013 PSI.
Event	11	Pump Spacer 1	Pump Spacer 1	8/9/2018	04:41:44	COM5	8.35	3.70	85.00	20.00	PUMP 20 BBLS OF FRESH WATER WITH RED DYE. PUMP RATE 4 BBLS/MIN @ 84 PSI.

Event	12	Pump Cement	Pump Cement	8/9/2018	04:48:31	COM5	13.50	8.00	297.00	170.44	PUMP 550 SKS OF SWIFTCM @ 13.5 LB/GAL, 1.74 FT3/SK, 9.2 GAL/SK 170.44 BBLS. HOT CALCULATED @ 1,653.21' TOT @ SURFACE. DENSITY VERIFIED BY PRESSURIZED MUD SCALES. PUMP RATE 8 BBLS/MIN @ 284 PSI.
Event	13	Shutdown	Shutdown	8/9/2018	05:10:51	USER					SHUTDOWN TO REMOVE SWAGE SO PLUG COULD BE LOADED.
Event	14	Drop Top Plug	Drop Top Plug	8/9/2018	05:16:21	COM5					REMOVED SWAGE TO DROP TOP PLUG, VERIFIED BY COMPANY REP.
Event	15	Pump Displacement	Pump Displacement	8/9/2018	05:18:53	COM5	8.36	8.00	361.00	124.00	BEGIN CALCULATED DISPLACEMENT OF 124 BBLS WITH FRESH WATER. CEMENT TO SURFACE @ 102 BBLS INTO DISPLACEMENT 22 BBLS CEMENT TO SURFACE.
Event	16	Bump Plug	Bump Plug	8/9/2018	05:40:12	COM5	8.41	0.00	1454.00	122.60	PLUG BUMPED AT CALCULATED DISPLACEMENT. PRESSURED UP TO 1,500 PSI FOR 5 MIN CASING PRESSURE TEST.
Event	17	Check Floats	Check Floats	8/9/2018	05:45:12	USER					RELEASED PRESSURE, FLOATS HELD, .75 BBLS BACK.
Event	18	End Job	End Job	8/9/2018	05:46:13	COM5					STOP RECORDING JOB DATA.

Event	19	Pre-Rig Down Safety Meeting	Pre-Rig Down Safety Meeting	8/9/2018	09:00:00	USER	DISCUSSED POSSIBLE HAZARDS ASSOCIATED WITH WEATHER, LOCATION AND RIGGING DOWN IRON AND HOSES.
Event	20	Rig-Down Equipment	Rig-Down Equipment	8/9/2018	09:15:00	USER	RIG DOWN BULK AND MIXING EQUIPMENT.
Event	21	Rig-Down Completed	Rig-Down Completed	8/9/2018	09:30:00	USER	ALL HALLIBURTON ITEMS WERE STOWED FOR TRAVEL, AND LOCATION WAS CLEAN.
Event	22	Pre-Convoy Safety Meeting	Pre-Convoy Safety Meeting	8/9/2018	09:45:00	USER	DISCUSSED ROUTES HAZARDS AND COMMUNICATION WITH CREW.
Event	23	Depart Location	Depart Location	8/9/2018	10:00:00	USER	THANK YOU FOR USING HALLIBURTON - NICK PETERSON AND CREW.

2.0 Attachments

2.1 Extraction Rinn Valley East N17-20-3N-Custom Results.png



3.0