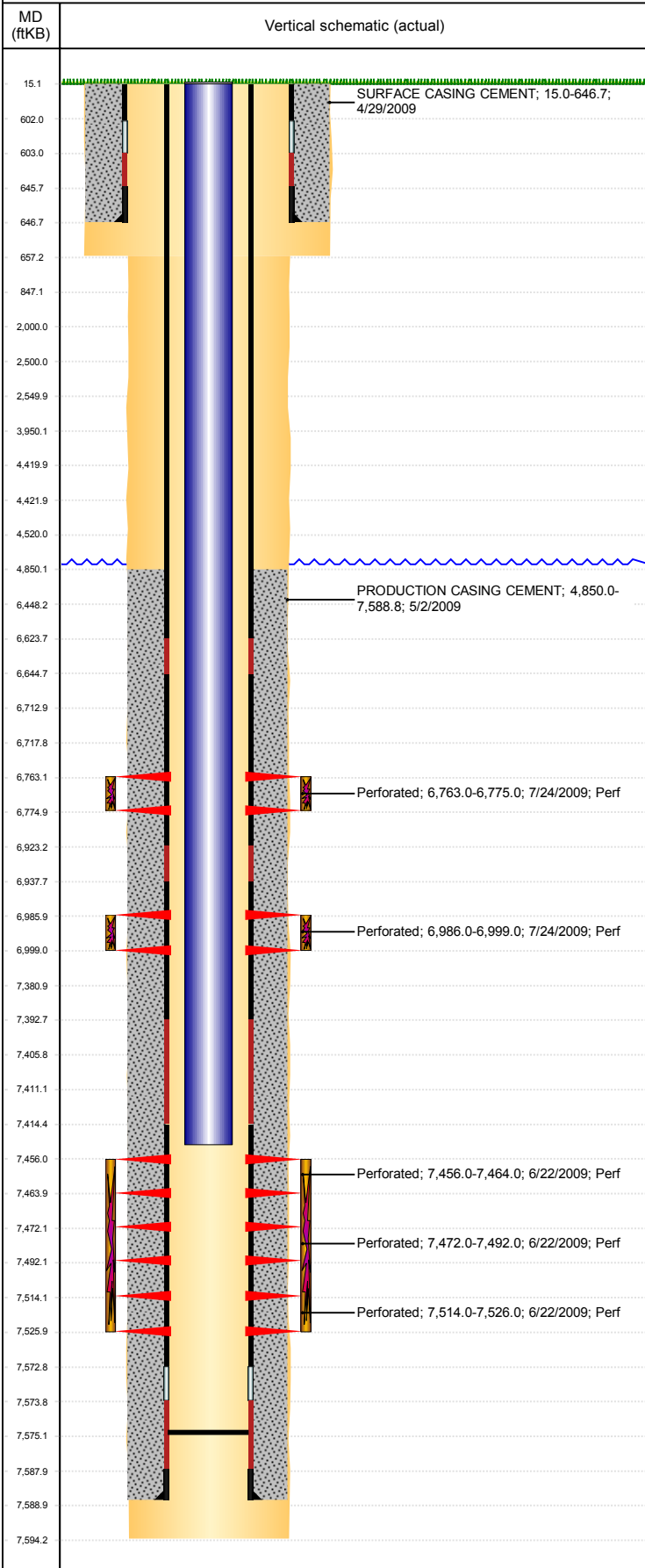


Well Name: GUTTERSEN STATE D16-24

VERTICAL - ORIGINAL HOLE, 11/8/2018 8:23:19 AM



Well Header									
API 05-123-29243		Business Unit DJ BASIN		District 15		Well Config VERTICAL			
KB - GL / MSL (ft... 15.00		Spud Date 4/29/2009		P & A Date		Well Production Status SI		SoRT No	
Comment 318Ae LOCATION CBL ON WELL VERY POOR. PERFORM BRADENHEAD TEST ON WELL. COGCC GAVE GO AHEAD ON WELL.									
Surface Location (Congressional)									
Qtr 3 NE	Qtr 4 SW	Section 16	Twonshp 3	Twonsh... N	Range 64	Rng E... W	Actual Latitude (°) 40.22188997	Actual Longitude (°) -104.55643314	
Wellbore Sections									
Section Des		Size (in)		Act Top, MD (ftKB)		Act Btm, MD (ftKB)			
SURFACE		12 1/4		15		657			
PRODUCTION		7 7/8		657		7,594			
Casing Strings									
Csg Des		Run Date		OD (in)	Wt/Len (lb/ft)	Grade	Top, MD (ftKB)	MD (ftKB)	
Surface		4/29/2009		8 5/8	24.00	J-55	15.0	646.7	
Production		5/2/2009		4 1/2	11.60	L-80	15.0	7,588.8	
Cement									
Des		Start Date		Top (ftKB)		Btm (ftKB)			
SURFACE CASING CEMENT		4/29/2009		15.0		646.7			
PRODUCTION CASING CEMENT		5/2/2009		4,850.0		7,588.8			
Zone Statuses									
Zone Name	Status Date	Status	Fluid Type	Job			Prod Method		
J SAND	7/31/2009	PR	Water	DRILLING/COMPLETION - ORIGINAL, 4/28/2009...			Flowing		
J SAND	9/22/2016	SI					Flowing		
NIOBRARA	7/25/2009	PR		DRILLING/COMPLETION - ORIGINAL, 4/28/2009...			Flowing		
NIOBRARA	7/31/2009	PR	Water				Flowing		
CODELL	7/31/2009	PR	Water				Flowing		
CODELL	9/22/2016	SI							
Perforation Data									
Linked Zone		Bnch/Stg	Entered Shot Total	Top (ftKB)	Btm (ftKB)	Date			
NIOBRARA, ORIGINAL HOLE		B	32	6,763.00	6,775.00	7/24/2009			
CODELL, ORIGINAL HOLE			54	6,986.00	6,999.00	7/24/2009			
J SAND, ORIGINAL HOLE		01	32	7,456.00	7,464.00	6/22/2009			
J SAND, ORIGINAL HOLE		02	80	7,472.00	7,492.00	6/22/2009			
J SAND, ORIGINAL HOLE		03	48	7,514.00	7,526.00	6/22/2009			
Stimulation Intervals									
Zone		Start Date		Top (ftKB)		Btm (ftKB)			
NIOBRARA, ORIGINAL HOLE		7/24/2009		6,763.0		6,775.0			
CODELL, ORIGINAL HOLE		7/24/2009		6,986.0		6,999.0			
J SAND, ORIGINAL HOLE		7/21/2009		7,456.0		7,526.0			
Other In Hole									
Run Date		Des		OD (in)		Top (ftKB)		Btm (ftKB)	
Logs									
Date		Type				Top, MD (ftKB)		Btm, MD (ftKB)	
5/2/2009		Caliper/Comp. Density/Neutron/GR/SP/ML				2,740.0		7,597.0	
5/2/2009		DIL/GR/SP/Caliper				642.0		7,597.0	
5/11/2009		CBL/CCL/GR				0.0		7,572.0	
5/14/2009		CBL/CCL/GR				270.0		7,574.0	
3/25/2011		GYRO				10.0		7,400.0	
Plug Back Total Depths									
Date		Type		Com				Depth (ftKB)	
5/2/2009		FLOAT COLLAR						7,573.8	
5/14/2009		FILL						7,575.0	