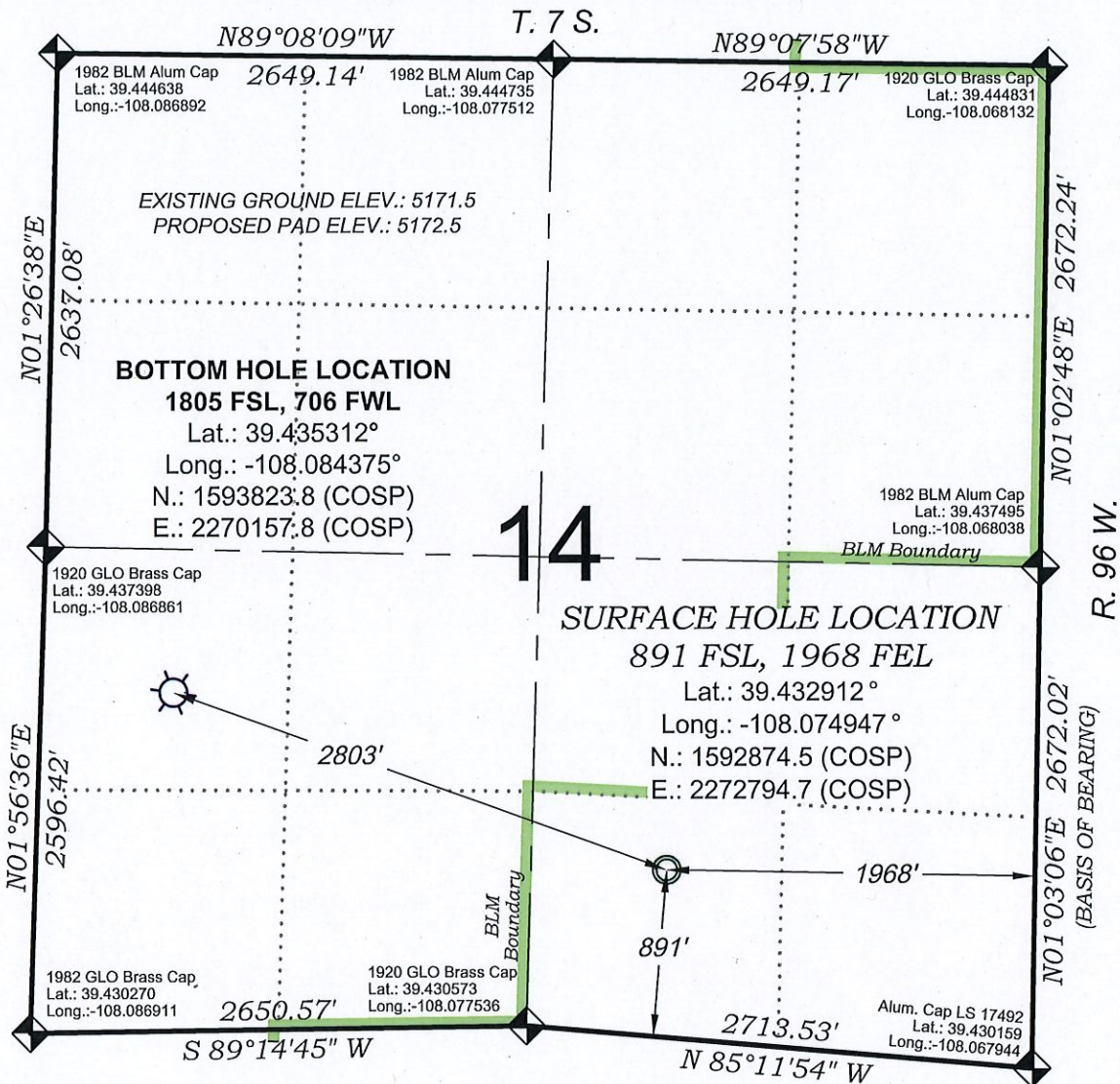
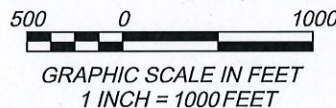


Strait Bottom Ranch GM 523-14



SEE CONSTRUCTION LAYOUT PLAT
FOR VISIBLE IMPROVEMENTS
WITHIN 500' OF THIS LOCATION



SURVEYORS STATEMENT

I, MICHAEL J. LANGHORNE, A REGISTERED LAND SURVEYOR IN THE STATE OF COLORADO DO HEREBY CERTIFY THAT THE SURVEY SHOWN HEREON WAS PREPARED UNDER MY DIRECT SUPERVISION AND HAS BEEN STAKED ON THE GROUND AS SHOWN ON THE PLAT AND CHECKING THAT THIS MAP IS A TRUE REPRESENTATION THEREOF.

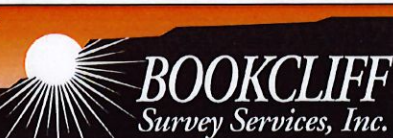
MICHAEL J. LANGHORNE, COLORADO REGISTRATION NO. 36572
FOR AND ON BEHALF OF
BOOKCLIFF SURVEY SERVICES, INC.

REFERENCES

- 1) DEPENDENT RESURVEY and SUBDIVISION OF CERTAIN SECTIONS
T. 7 S., R. 96 W., 6th P.M. (GLO PLAT)
- 2) U.S.G.S. QUAD: RULISON, CO

REVISED: 3/15/18

136 East Third Street
Rifle, Colorado
81650 Ph. (970)
625-2720 Fax (970)
625-2773



SURVEY DATE: 5/10/13
MAP DATE: 5/14/13
SCALE: 1" = 1000'
PLAT: 1 of 1
PROJECT: TEP Valley

- LEGEND -
FIELD LOCATED SECTION
MONUMENTS AS DESCRIBED

FIELD SURVEYED
WELL LOCATION
CALCULATED BOTTOM
HOLE LOCATION
CALCULATED SECTION
CORNER LOCATION

NOTES

- 1) ELEVATIONS BASED ON N.A.V.D. 1988 PUBLISHED COORDINATES.
- 2) LATITUDES AND LONGITUDES ARE BASE ON NAD 83, PUBLISHED COORDINATES
- 3) STATE PLANE COORDINATES ARE BASED ON COLORADO CENTRAL ZONE, U.S. SURVEY FEET.
- 4) ELEVATION MASK SET TO 15°
- 5) GPS OPERATOR J. KIRKPATRICK, OBSERVED A PDOP 2.7 ON SURVEY POINT NUMBER 398.
- 6) SURFACE AND BOTTOM HOLE LOCATIONS ARE MEASURED 90° FROM SECTION LINES.

WELL LOCATION PLAT Prepared for:



TEP Rocky Mountain LLC

SW/4 SE/4, SECTION 14
T. 7 S., R. 96 W. of the 6th. P.M.
GARFIELD COUNTY, COLORADO