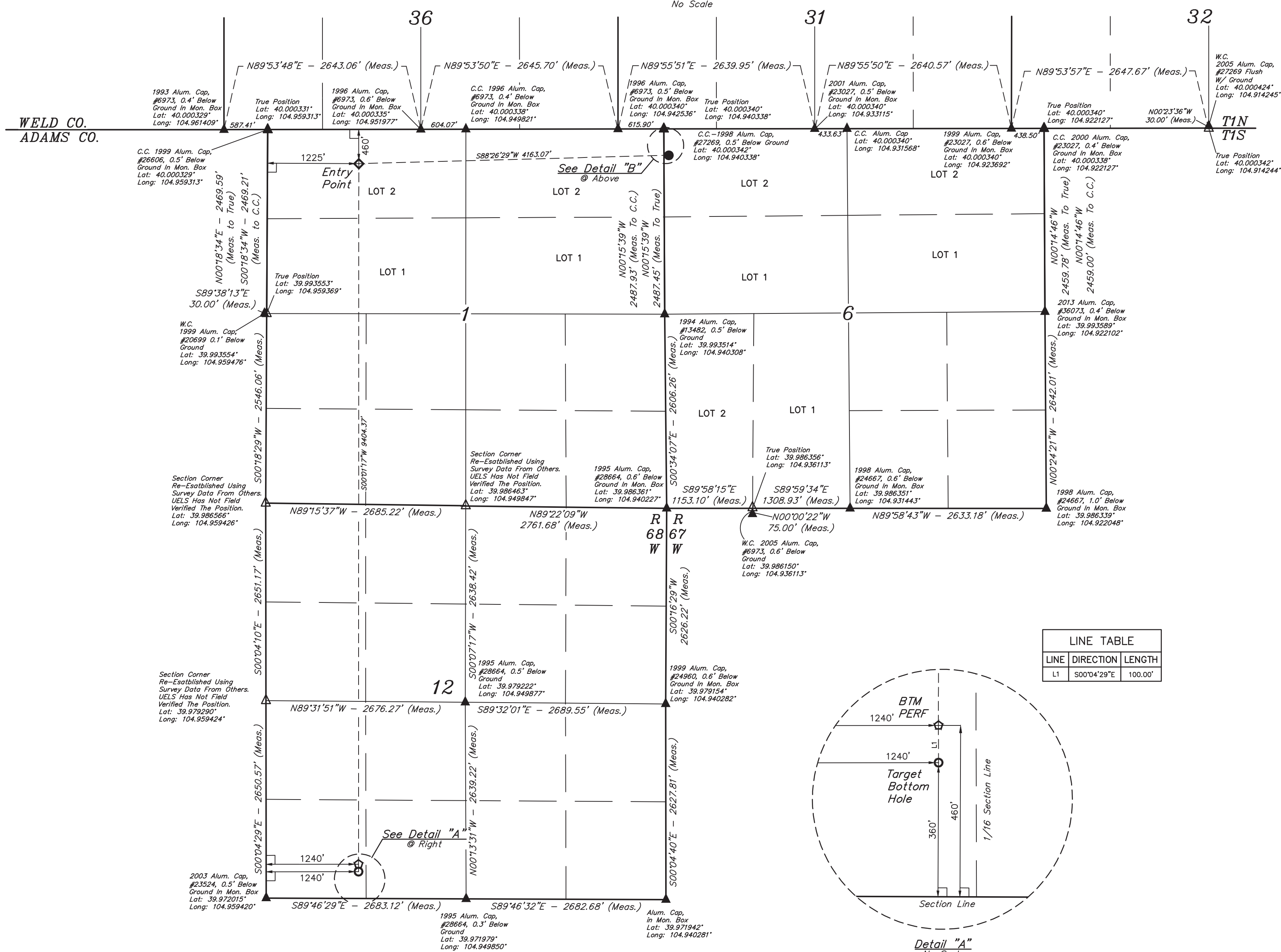
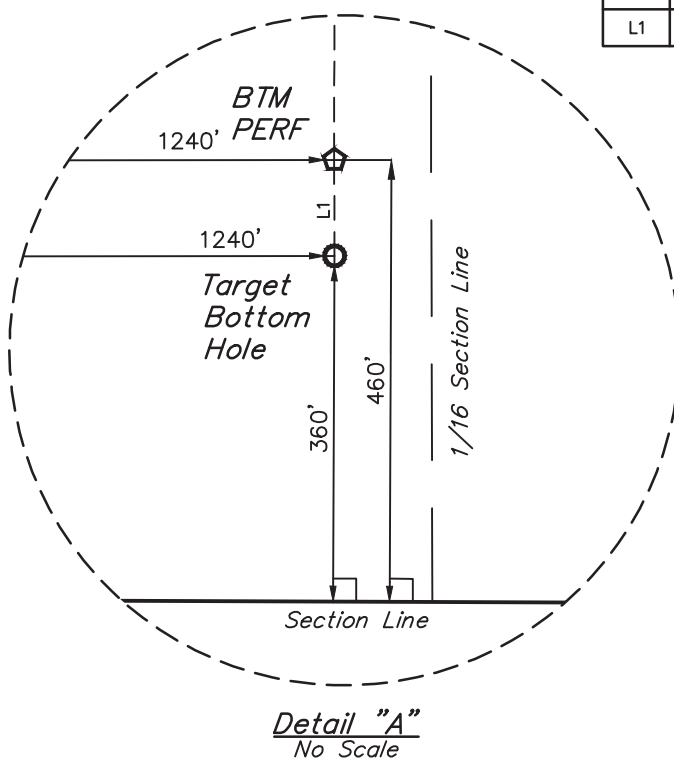


L = 90° SYMBOL
 ● = PROPOSED WELLHEAD.
 ◆ = ENTRY POINT.
 ⬠ = BTM PERF.
 ○ = TARGET BOTTOM HOLE.
 ▲ = SECTION CORNERS
 LOCATED. (NAD 83)
 △ = SECTION CORNERS
 RE-ESTABLISHED.
 (Not Set on Ground.)
 (NAD 83)

Diagram illustrating a vertical curve for a bridge. The curve is represented by a dashed circle. A horizontal line is labeled "Section Line". A vertical line with an arrow at the top is also labeled "Section Line". A vertical dimension of 354' is shown from the horizontal line to a point on the vertical line. A horizontal dimension of 165' is shown from the vertical line to a point on the curve. Text to the right of the diagram reads: "RIO", "LC 12-376HC", "Elev. Graded", and "Ground = 5070.1'". Below the diagram, the text "Detail 'B'" and "No. Scale" is written.



LINE TABLE		
LINE	DIRECTION	LENGTH
L1	S00°04'29"E	100.00'




PDOP = 1.5

NAD 83 (SURFACE LOCATION)	NAD 83 (ENTRY POINT)	NAD 83 (BTM PERF)	NAD 83 (TARGET BOTTOM HOLE)
LATITUDE = 39°59'57.73" (99.999369)	LATITUDE = 39°59'56.65" (39.999071)	LATITUDE = 39°58'23.74" (39.973261)	LATITUDE = 39°58'22.75" (39.972887)
LONGITUDE = 104°56'24.36" (104.940101)	LONGITUDE = 104°57'17.83" (104.954952)	LONGITUDE = 104°57'17.99" (104.954998)	LONGITUDE = 104°57'17.99" (104.954998)
NAD 27 (SURFACE LOCATION)	NAD 27 (ENTRY POINT)	NAD 27 (BTM PERF)	NAD 27 (TARGET BOTTOM HOLE)
LATITUDE = 39°59'57.79" (99.999385)	LATITUDE = 39°59'56.71" (39.999087)	LATITUDE = 39°58'23.80" (39.973277)	LATITUDE = 39°58'22.81" (39.973002)
LONGITUDE = 104°56'22.44" (104.939568)	LONGITUDE = 104°57'15.90" (104.954418)	LONGITUDE = 104°57'16.07" (104.954464)	LONGITUDE = 104°57'16.07" (104.954464)

CERTIFICATE

THIS IS TO CERTIFY THAT THE ABOVE MAP WAS PREPARED FROM FIELD NOTES OF ACTUAL SURVEYS MADE BY ME OR UNDER MY SUPERVISION, AND THAT THE SAME ARE TRUE AND CORRECT TO THE BEST OF MY KNOWLEDGE AND BELIEF.



REGISTERED LAND SURVEYOR
REGISTRATION NO. 28285
STATE OF COLORADO 09-13-18

REV: 1 09-13-18 C.IVIE (PAD NAME CHANGE)

GREAT WESTERN OPERATING COMPANY

RIO LC 12-376HC
NW 1/4 NW 1/4, SECTION 6, T1S, R67W, 6th P.M.
ADAMS COUNTY, COLORADO

DRAWN BY	D.E.D.	07-10-10
WELL LOCATION PLAT		



UINTEAH
ENGINEERING & LAND SURVEYING

UELS, LLC
Corporate Office * 85 South 200 East
Vernal, UT 84078 * (435) 789-1017

BASIS OF BEARINGS
 F BEARINGS IS A G.P.S. OBSERVATION
BASIS OF ELEVATION

BENCHMARK JR 53 5026 LOCATED IN THE SW 1/4 SE 1/4 OF SECTION 18, T1N, R68W, 6th P.M., TAKEN FROM 1988 PUBLISHED DATUM BY THE UNITED STATES DEPARTMENT OF THE INTERIOR, GEOLOGICAL SURVEY AS BEING 5028 FEET.