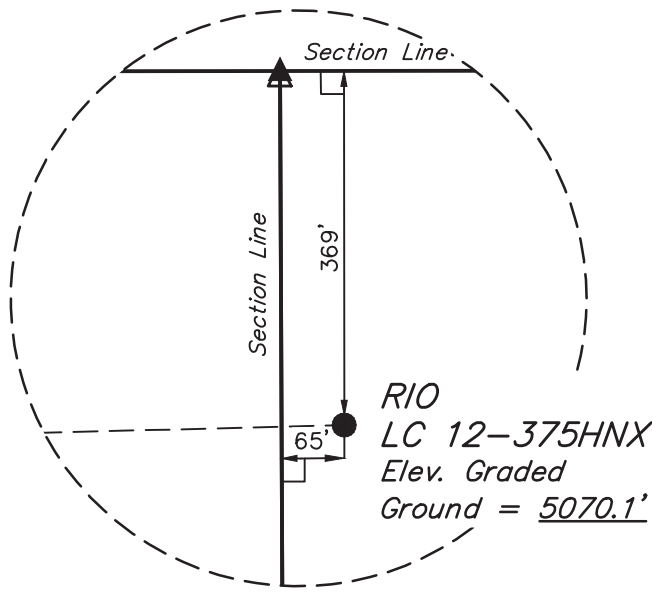


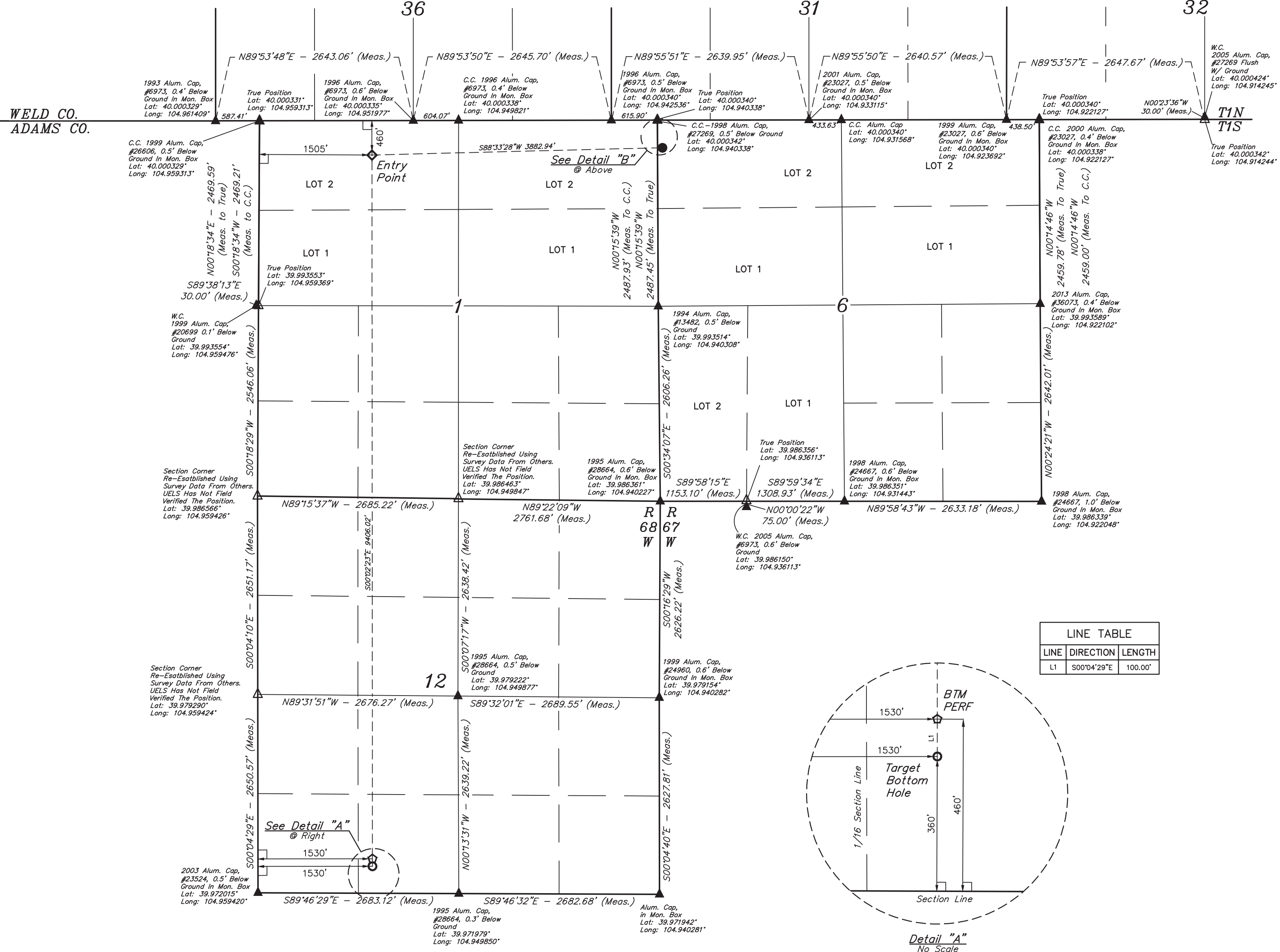
LEGEND:

- = 90° SYMBOL  
● = PROPOSED WELLHEAD.  
◇ = ENTRY POINT.  
○ = BTM PERF.  
○ = TARGET BOTTOM HOLE.  
△ = SECTION CORNERS LOCATED. (NAD 83)  
△ = SECTION CORNERS RE-ESTABLISHED. (Not Set on Ground.) (NAD 83)

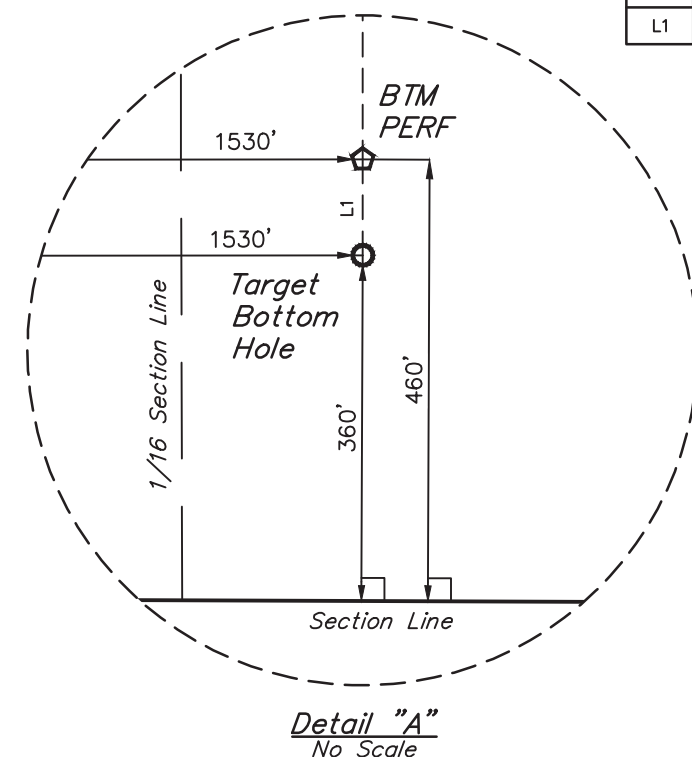
T1S, R67W, 6th P.M.



Detail "B"  
No Scale



LINE TABLE		
LINE	DIRECTION	LENGTH
L1	S00°04'29"E	100.00'



Detail "A"  
No Scale



PDOP = 1.5

NAD 83 (SURFACE LOCATION)	NAD 83 (ENTRY POINT)	NAD 83 (BTM PERF)	NAD 83 (TARGET BOTTOM HOLE)
LATITUDE = 39°59'57.58" (39.999328) LONGITUDE = 104°56'24.36" (104.940100)	LATITUDE = 39°59'56.66" (39.999071) LONGITUDE = 104°57'14.23" (104.953952)	LATITUDE = 39°58'23.73" (39.973257) LONGITUDE = 104°57'14.27" (104.953963)	LATITUDE = 39°58'22.74" (39.972983) LONGITUDE = 104°57'14.27" (104.953963)
NAD 27 (SURFACE LOCATION)	NAD 27 (ENTRY POINT)	NAD 27 (BTM PERF)	NAD 27 (TARGET BOTTOM HOLE)
LATITUDE = 39°59'57.64" (39.999344) LONGITUDE = 104°56'22.44" (104.939567)	LATITUDE = 39°59'56.71" (39.999087) LONGITUDE = 104°57'12.31" (104.953419)	LATITUDE = 39°58'23.78" (39.973273) LONGITUDE = 104°57'12.35" (104.953429)	LATITUDE = 39°58'22.79" (39.972998) LONGITUDE = 104°57'12.35" (104.953429)

**BASIS OF BEARINGS**  
BASIS OF BEARINGS IS A C.P.S. OBSERVATION  
**BASIS OF ELEVATION**  
BENCHMARK JR 53 5026 LOCATED IN THE SW 1/4 SE 1/4 OF SECTION 18, T1N, R67W, 6th P.M., TAKEN FROM 1988 PUBLISHED DATUM BY THE UNITED STATES DEPARTMENT OF THE INTERIOR, GEOLOGICAL SURVEY AS BEING 5028 FEET.

**UELS, LLC**  
Corporate Office \* 85 South 200 East  
Vernal, UT 84078 \* (435) 789-1017



**GREAT WESTERN OPERATING COMPANY**

**RIO LC 12-375HNX**  
NW 1/4 NW 1/4, SECTION 6, T1S, R67W, 6th P.M.  
ADAMS COUNTY, COLORADO

**SURVEYED BY** MATHEW MILLER, R.W. **SCALE** 06-28-18 1" = 1000'  
**DRAWN BY** B.L.B. **DATE** 07-10-18

**WELL LOCATION PLAT**

CERTIFICATE OF REGISTRATION  
THIS IS TO CERTIFY THAT THE ABOVE SURVEY WAS CONDUCTED IN ACCORDANCE WITH THE RULES AND REGULATIONS OF THE BOARD OF LAND SURVEYORS OF THE STATE OF COLORADO, AND THAT THE SAME ARE TRUE AND CORRECT TO THE BEST OF MY KNOWLEDGE AND BELIEF.

REGISTERED LAND SURVEYOR  
STATE OF COLORADO  
NO. 28285  
EXPIRATION DATE 06-28-18

REVIEWED BY: [Signature]  
DATE: 07-10-18

REVISION: 1 09-13-18 C.I.VIE (PAD NAME CHANGE)