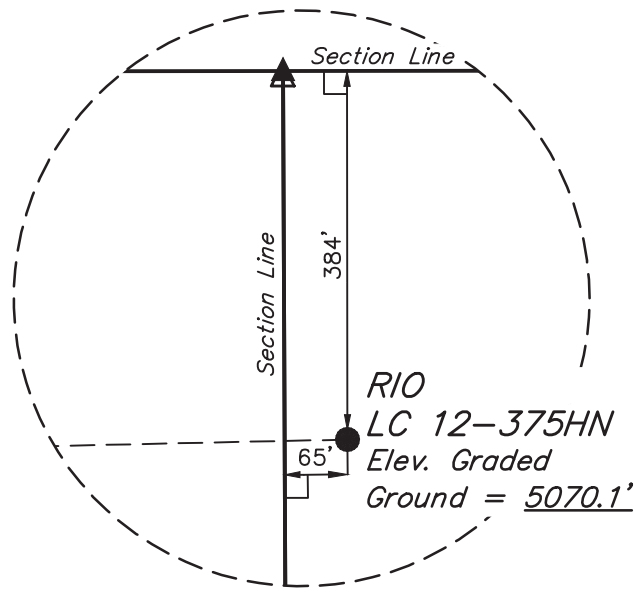


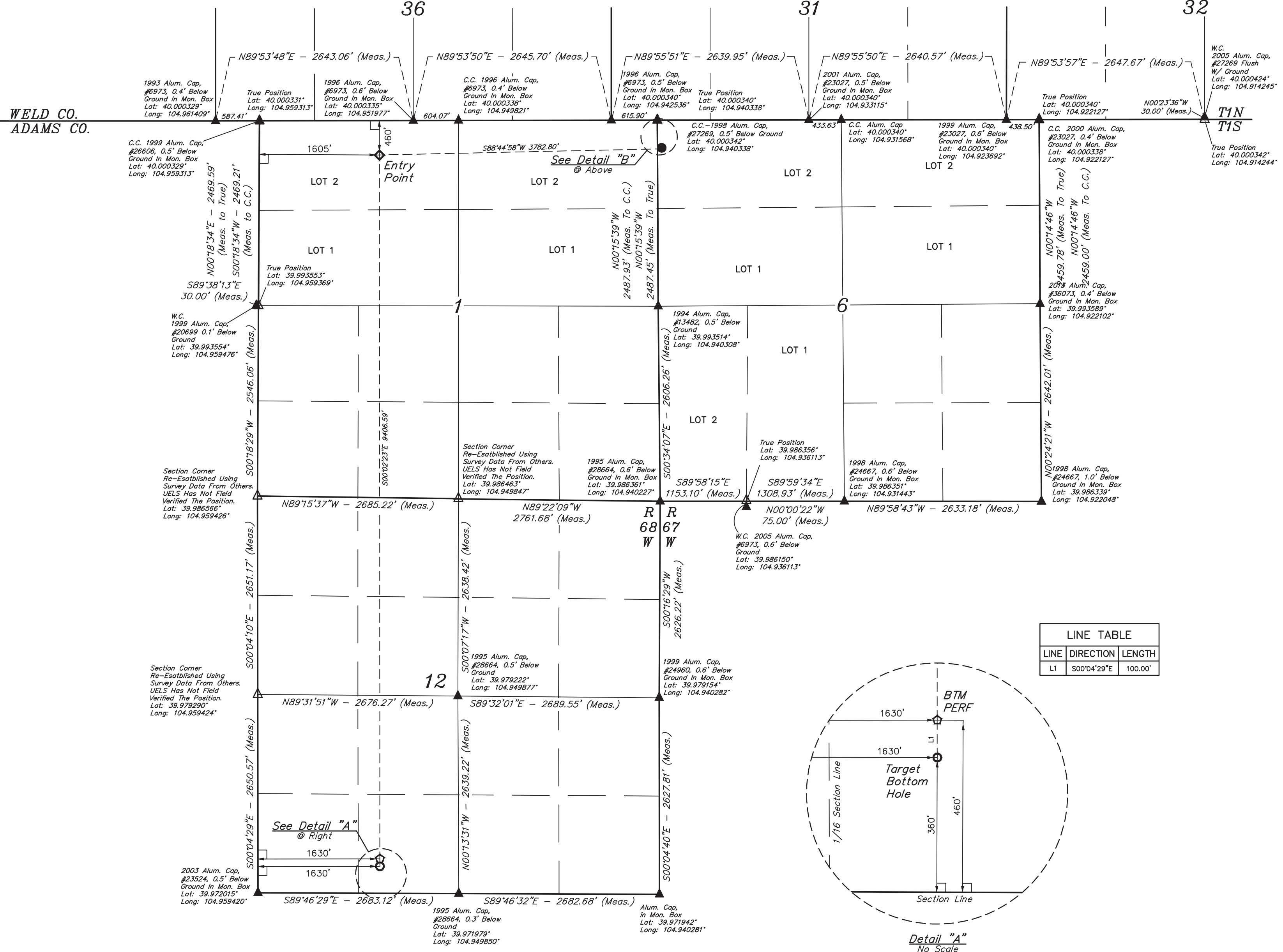
LEGEND:

- = 90° SYMBOL  
● = PROPOSED WELLHEAD.  
◇ = ENTRY POINT.  
○ = BTM PERF.  
○ = TARGET BOTTOM HOLE.  
△ = SECTION CORNERS LOCATED. (NAD 83)  
△ = SECTION CORNERS RE-ESTABLISHED. (Not Set on Ground.) (NAD 83)

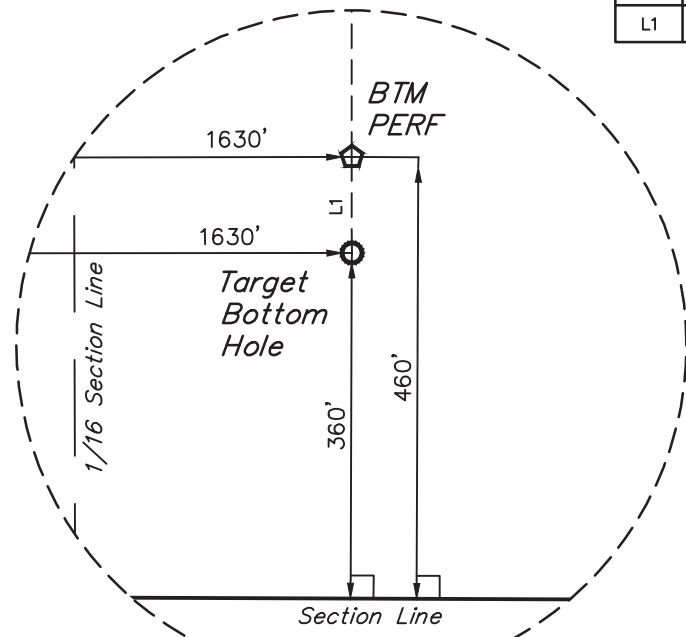
T1S, R67W, 6th P.M.



Detail "B"  
No Scale



LINE TABLE		
LINE	DIRECTION	LENGTH
L1	S00°04'29"E	100.00'



Detail "A"  
No Scale



PDOP = 1.5

NAD 83 (SURFACE LOCATION)	NAD 83 (ENTRY POINT)	NAD 83 (BTM PERF)	NAD 83 (TARGET BOTTOM HOLE)
LATITUDE = 39°59'57.43" (39.999287)	LATITUDE = 39°59'56.66" (39.999072)	LATITUDE = 39°58'23.72" (39.973256)	LATITUDE = 39°58'22.73" (39.972981)
LONGITUDE = 104°56'24.36" (104.940100)	LONGITUDE = 104°57'12.94" (104.953596)	LONGITUDE = 104°57'12.98" (104.953607)	LONGITUDE = 104°57'12.98" (104.953607)
NAD 27 (SURFACE LOCATION)	NAD 27 (ENTRY POINT)	NAD 27 (BTM PERF)	NAD 27 (TARGET BOTTOM HOLE)
LATITUDE = 39°59'57.49" (39.999303)	LATITUDE = 39°59'56.71" (39.999087)	LATITUDE = 39°58'23.78" (39.973271)	LATITUDE = 39°58'22.79" (39.972997)
LONGITUDE = 104°56'22.44" (104.939567)	LONGITUDE = 104°57'11.02" (104.953062)	LONGITUDE = 104°57'11.06" (104.953073)	LONGITUDE = 104°57'11.06" (104.953073)

BASIS OF BEARINGS  
BASIS OF ELEVATION

ENGINEERING AND SURVEYING  
P.M., TAKEN FROM 1988 PUBLISHED DATUMS BY THE UNITED STATES DEPARTMENT OF THE INTERIOR, GEOLOGICAL SURVEY, AS BEING 5026 FEET.



UELLS, LLC  
Corporate Office \* 85 South 200 East  
Vernal, UT 84078 \* (435) 789-1017



GREAT WESTERN OPERATING COMPANY

RIO LC 12-375HN  
NW 1/4 NW 1/4, SECTION 6, T1S, R67W, 6th P.M.  
ADAMS COUNTY, COLORADO

SURVEYED BY	MATHEW MILLER, R.W.	06-28-18	SCALE
DRAWN BY	B.L.B.	07-10-18	1" = 1000'

WELL LOCATION PLAT

CERTIFICATE OF REGISTRATION  
THIS IS TO CERTIFY THAT THE ABOVE SURVEY WAS CONDUCTED IN ACCORDANCE WITH THE RULES AND REGULATIONS OF THE BOARD OF LAND SURVEYORS OF THE STATE OF COLORADO, AND THAT THE SAME ARE TRUE AND CORRECT TO THE BEST OF MY KNOWLEDGE AND BELIEF.  
REGISTERED LAND SURVEYOR  
STATE OF COLORADO  
28285  
18

REV: 1 09-13-18 C.IVIE (PAD NAME CHANGE)