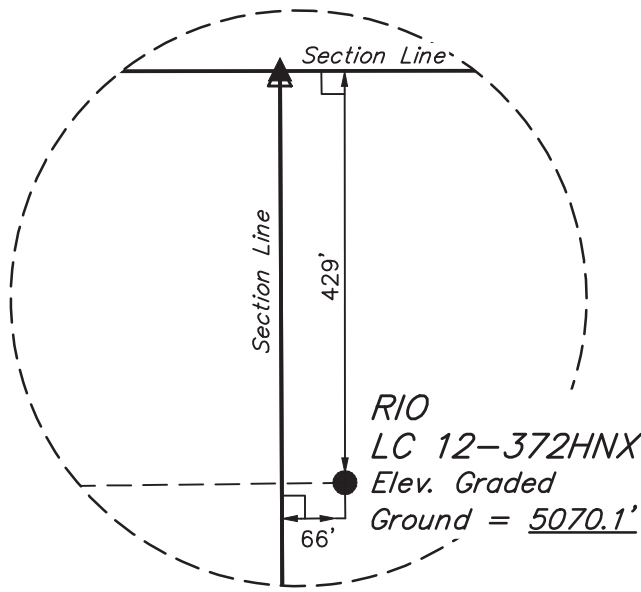


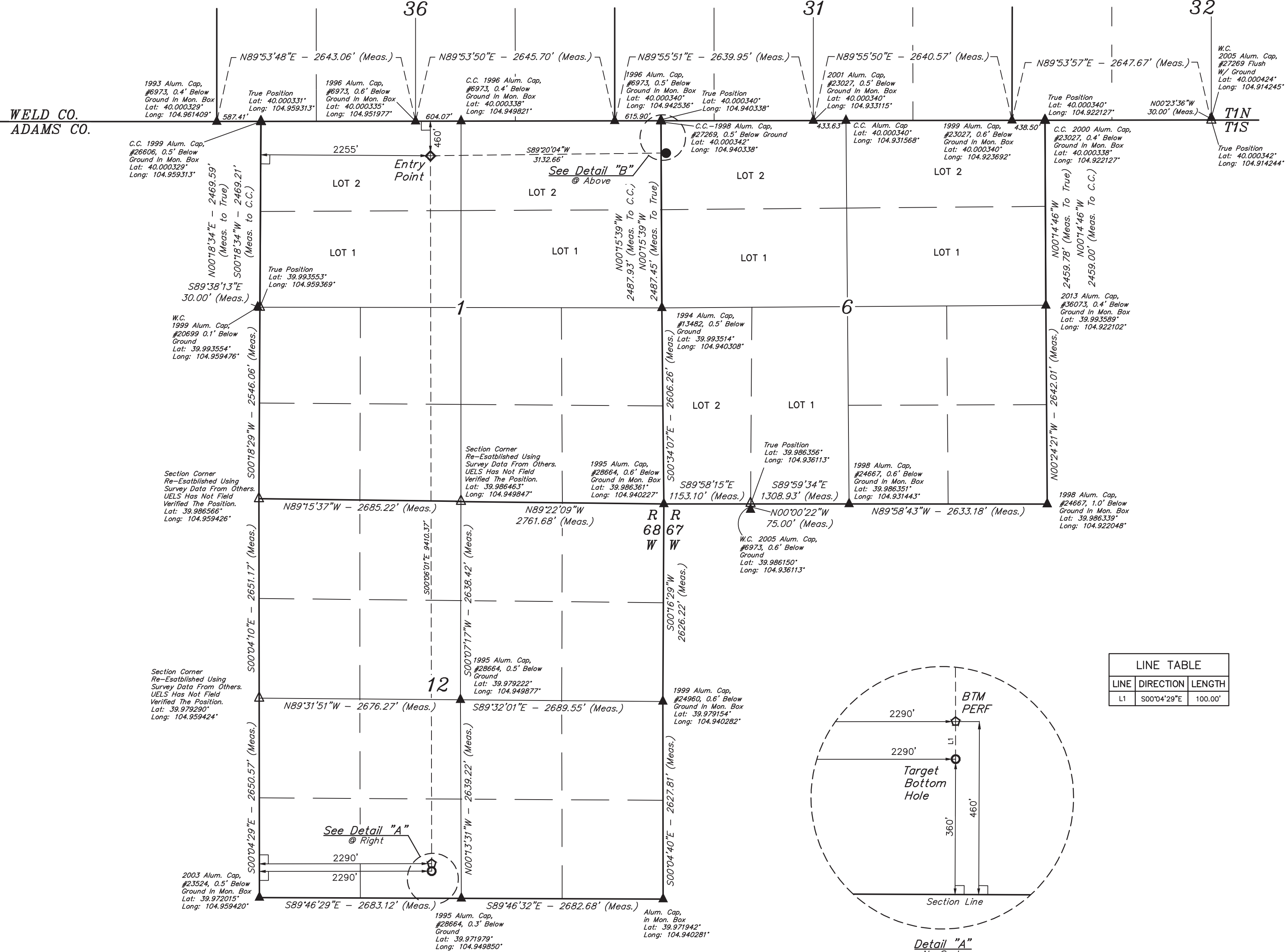
LEGEND:

- = 90° SYMBOL
● = PROPOSED WELLHEAD.
◇ = ENTRY POINT.
○ = BTM PERF.
○ = TARGET BOTTOM HOLE.
△ = SECTION CORNERS LOCATED. (NAD 83)
△ = SECTION CORNERS RE-ESTABLISHED. (Not Set on Ground.) (NAD 83)

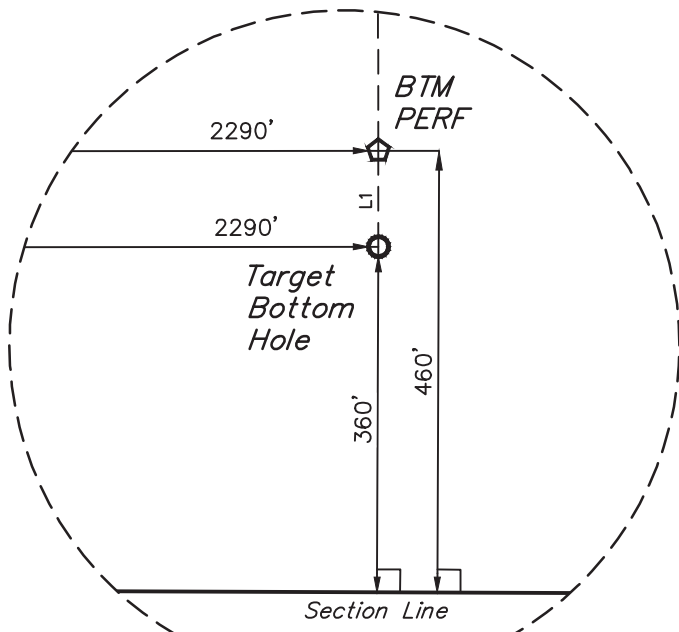
T1S, R67W, 6th P.M.



Detail "B"
No Scale



LINE TABLE		
LINE	DIRECTION	LENGTH
L1	S00°04'29"E	100.00'



Detail "A"
No Scale



PDOP = 1.5

NAD 83 (SURFACE LOCATION)	NAD 83 (ENTRY POINT)	NAD 83 (BTM PERF)	NAD 83 (TARGET BOTTOM HOLE)
LATITUDE = 39°59'56.99" (39.999163) LONGITUDE = 104°56'24.35" (104.940098)	LATITUDE = 39°59'56.66" (39.999073) LONGITUDE = 104°57'04.59" (104.951276)	LATITUDE = 39°58'23.69" (39.973247) LONGITUDE = 104°57'04.51" (104.951252)	LATITUDE = 39°58'22.70" (39.972972) LONGITUDE = 104°57'04.51" (104.951252)
NAD 27 (SURFACE LOCATION)	NAD 27 (ENTRY POINT)	NAD 27 (BTM PERF)	NAD 27 (TARGET BOTTOM HOLE)
LATITUDE = 39°59'57.05" (39.999179) LONGITUDE = 104°56'22.43" (104.939565)	LATITUDE = 39°59'56.72" (39.999089) LONGITUDE = 104°57'02.67" (104.950742)	LATITUDE = 39°58'23.74" (39.973262) LONGITUDE = 104°57'02.59" (104.950719)	LATITUDE = 39°58'22.76" (39.972988) LONGITUDE = 104°57'02.59" (104.950718)

BASIS OF BEARINGS
BASIS OF BEARINGS IS A C.P.S. OBSERVATION
BASIS OF ELEVATION
BENCHMARK JR 53 5026 LOCATED IN THE SW 1/4 SE 1/4 OF SECTION 18, T1N, R67W, 6th P.M., TAKEN FROM 1988 PUBLISHED DATUM BY THE UNITED STATES DEPARTMENT OF THE INTERIOR, GEOLOGICAL SURVEY AS BEING 5028 FEET.

UELS, LLC
Corporate Office * 85 South 200 East
Vernal, UT 84078 * (435) 789-1017



GREAT WESTERN OPERATING COMPANY

RIO LC 12-372HNX
NW 1/4 NW 1/4, SECTION 6, T1S, R67W, 6th P.M.
ADAMS COUNTY, COLORADO

SURVEYED BY	MATHEW MILLER, R.W.	06-28-18	SCALE
DRAWN BY	B.L.B.	07-10-18	1" = 1000'

WELL LOCATION PLAT

CERTIFICATE OF RECORD
THIS IS TO CERTIFY THAT THE ABOVE PLAT IS A TRUE AND CORRECT COPY OF THE ORIGINAL PLAT AS FILED IN THE PUBLIC RECORDS OF THE STATE OF COLORADO.
NOTES OF ACTUAL SURVEYS MADE BY THE SURVEYOR AND UNDER MY SUPERVISION AND THAT THE SAME ARE TRUE AND CORRECT TO THE BEST OF MY KNOWLEDGE AND BELIEF.

REGISTERED LAND SURVEYOR
REGISTRATION NO. 28285
STATE OF COLORADO
JUL 18 2018

REV: 1 09-13-18 C.IVIE (PAD NAME CHANGE)