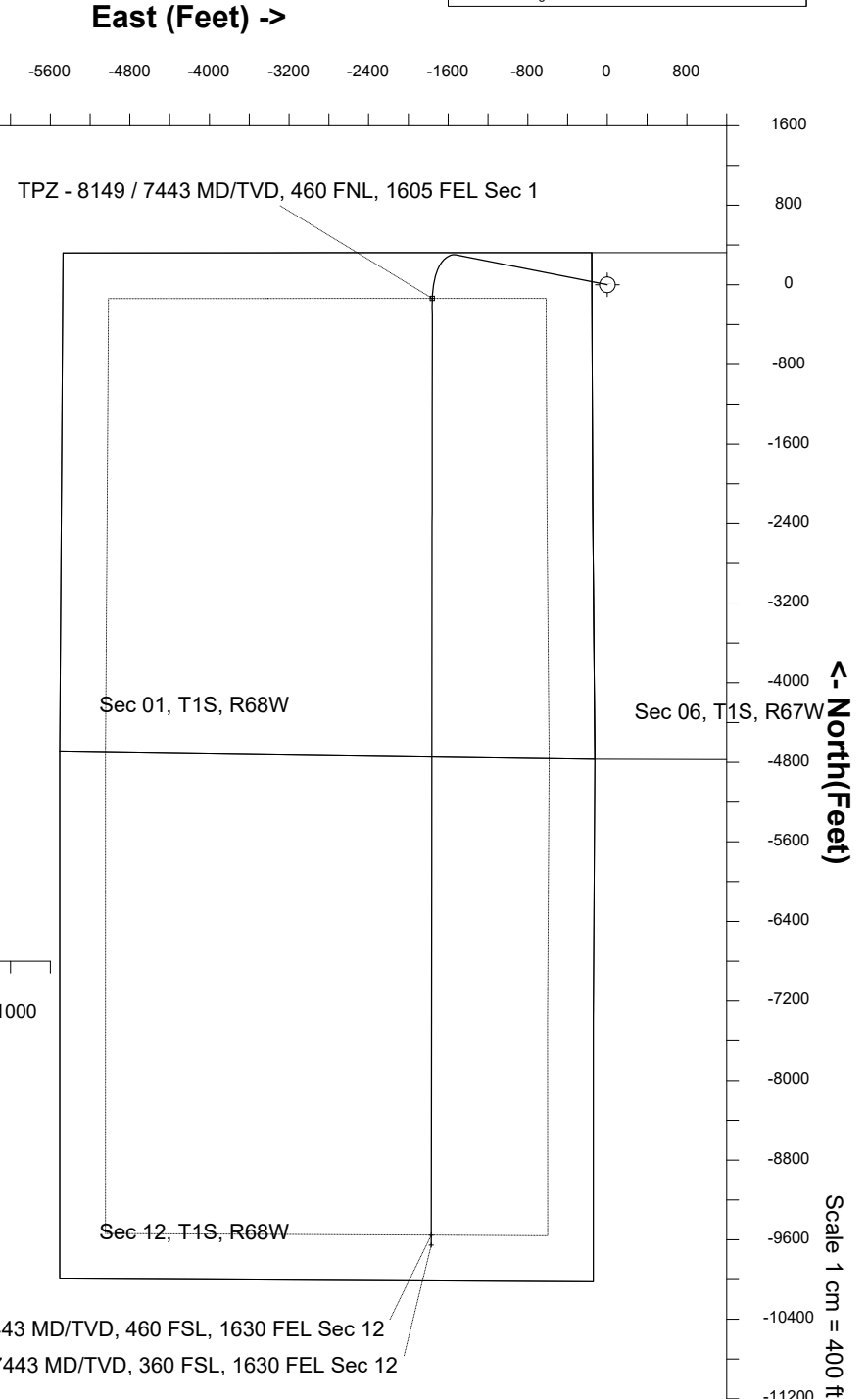
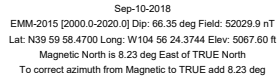


Location	Colorado	Slot	E06 - Rio LC 12-366HNX
Field	Wattenburg	Well	Rio LC 12-366HNX
Installation	Rio	Wellbore	Rio LC 12-366HNX (PWB)

Plot reference is Rio LC 12-366HNX (PWB).
Ref wellpath is Rio LC 12-366HNX (PWP#1).
Coordinates are in Feet reference E06 - Rio LC 12-366HNX.
True Vertical Depths are reference Rig Datum.
Measured Depths are reference Rig Datum.
Rig Datum: Planned Datum #1
Rig Datum to Mean Sea Level: 5087.60 ft.
Plot North is aligned to TRUE North.



WELL PROFILE DATA								
Point	MD	Inc	Azi	TVD	North	East	deg/100ft	V. Sect
Tie on	0.00	0.00	0.00	0.00	S 0.00	W 0.00		-0.00
KOP	3826.00	0.00	281.19	3826.00	S 0.00	W 0.00	0.00	-0.00
End of Build	4825.94	30.00	281.19	4780.88	N 49.65	W 250.98	3.00	-3.58
End of Hold	7414.32	30.00	281.19	7022.52	N 300.78	W 1520.50	0.00	-21.69
Target TPZ - ... Sec 1	8149.21	90.00	180.06	7443.00	S 137.64	W 1759.17	13.00	452.57
Target Btm Pe...Sec 12	17565.65	90.00	180.06	7443.00	S 9554.08	W 1769.65	0.00	9716.57
End of Turn	17566.11	90.00	180.00	7443.00	S 9554.54	W 1769.65	13.00	9717.02
T.D. & Target BHL... 12	17665.47	90.00	180.00	7443.00	S 9653.89	W 1769.65	0.00	9814.75