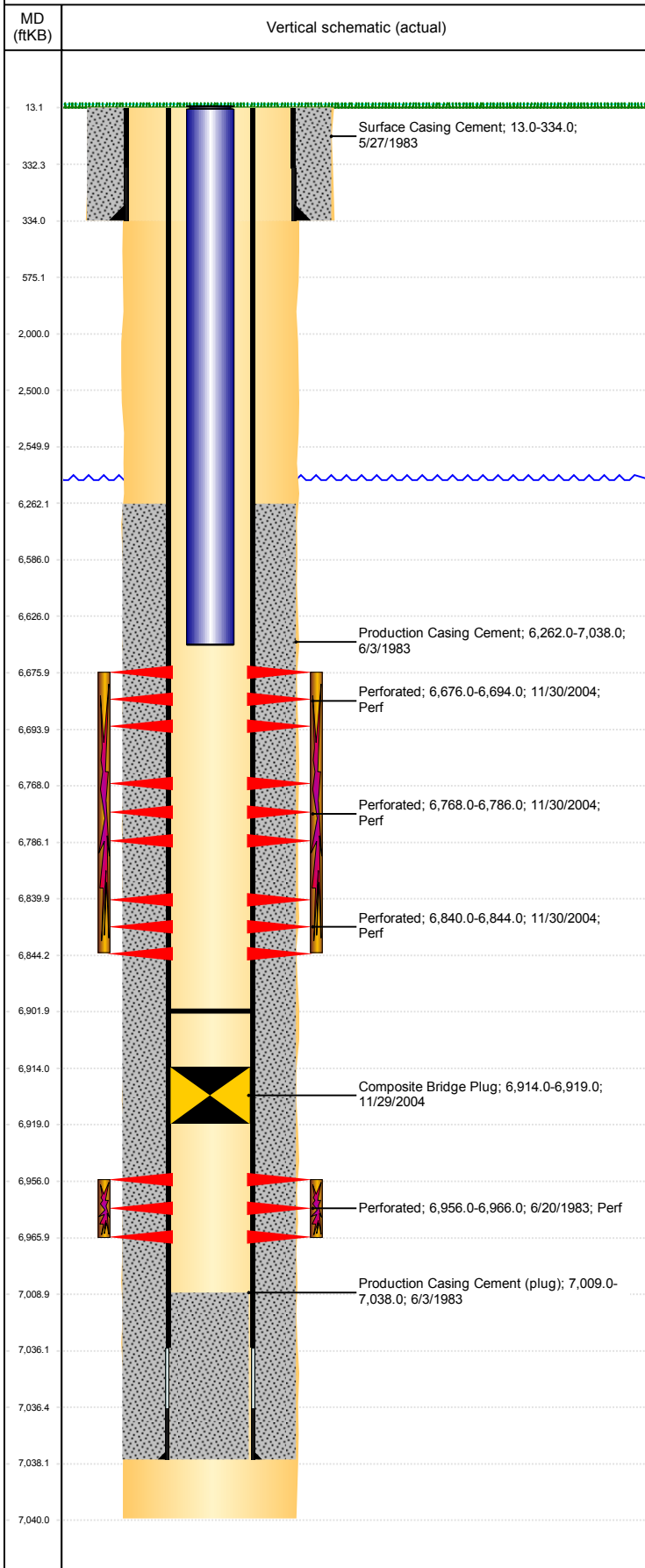


**Well Name: OPDYKE HINKLE 01**

VERTICAL - ORIGINAL HOLE, 11/6/2018 1:53:24 PM



Well Header									
API 05-123-11117		Business Unit DJ BASIN			District 15		Well Config VERTICAL		
KB - GL / MSL (ft... 13.00		Spud Date 5/27/1983		P & A Date		Well Production Status SI			SoRT No
Comment D & C REPORTS MISSING FROM WELL FILE, DATA OFF ST COMP RPT AND HISTORICAL SCHEMATICS									
COMPOSITE BRIDGE PLUG @ 6914', NO REPORT OF REMOVAL									
Surface Location (Congressional)									
Qtr 3 NW	Qtr 4 SE	Section 5	Twonshp 4	Twonsh... N	Range 64	Rng E/... W	Actual Latitude (°) 40.33956766	Actual Longitude (°) -104.57189337	
Wellbore Sections									
Section Des			Size (in)			Act Top, MD (ftKB)		Act Btm, MD (ftKB)	
SURFACE			12 1/4			13		334	
PRODUCTION			8 5/8			334		7,040	
Casing Strings									
Csg Des			Run Date		OD (in)	Wt/Len (lb/ft)	Grade	Top, MD (ftKB)	MD (ftKB)
Surface			5/27/1983		8 5/8	24.00		13.0	334.0
Production			6/3/1983		4 1/2	11.60		13.0	7,038.0
Cement									
Des					Start Date		Top (ftKB)		Btm (ftKB)
Surface Casing Cement					5/27/1983		13.0		334.0
Production Casing Cement					6/3/1983		6,262.0		7,038.0
Zone Statuses									
Zone Name	Status Date	Status	Fluid Type	Job				Prod Method	
CODELL	2/19/2010	PR	Water	RECOMPLETION, 11/29/2004 00:00				Flowing	
CODELL	9/22/2016	SI							
NIOBRARA	12/7/2004	PR							
NIOBRARA	2/19/2010	PR	Water					Flowing	
Perforation Data									
Linked Zone		Bnch/Stg	Entered Shot Total	Top (ftKB)		Btm (ftKB)		Date	
NIOBRARA, ORIGINAL HOLE		A	108	6,676.00		6,694.00		11/30/2004	
NIOBRARA, ORIGINAL HOLE		B	108	6,768.00		6,786.00		11/30/2004	
NIOBRARA, ORIGINAL HOLE		C	24	6,840.00		6,844.00		11/30/2004	
CODELL, ORIGINAL HOLE			20	6,956.00		6,966.00		6/20/1983	
Stimulation Intervals									
Zone				Start Date		Top (ftKB)		Btm (ftKB)	
NIOBRARA, ORIGINAL HOLE				12/6/2004		6,676.0		6,844.0	
CODELL, ORIGINAL HOLE				6/21/1983		6,956.0		6,966.0	
Other In Hole									
Run Date		Des				OD (in)	Top (ftKB)	Btm (ftKB)	
11/29/2004		Composite Bridge Plug				4	6,914.0	6,919.0	
Logs									
Date		Type				Top, MD (ftKB)		Btm, MD (ftKB)	
6/3/1983		COMPENSATED DENSITY				6,600.0		7,039.0	
6/3/1983		INDUCTION				319.0		7,040.0	
11/29/2004		CBL/CCL/GR				6,131.0		7,006.0	
6/8/2016		GYRO				0.0		6,600.0	
Plug Back Total Depths									
Date		Type		Com				Depth (ftKB)	
11/29/2004		FILL		DEPTH LOGGER ON CBL				7,009.0	
1/5/2005		FILL		CLEAN OUT				6,902.0	