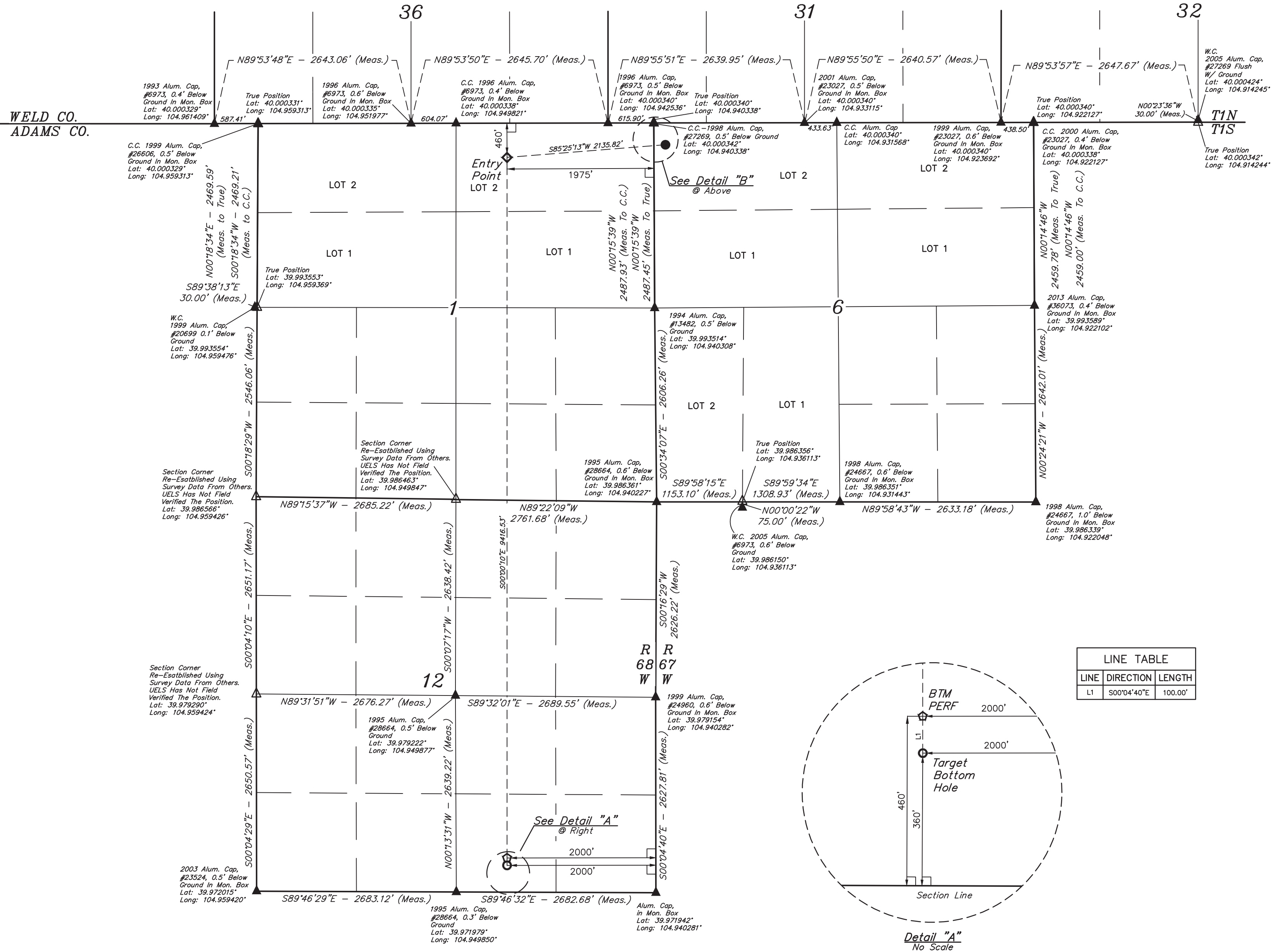
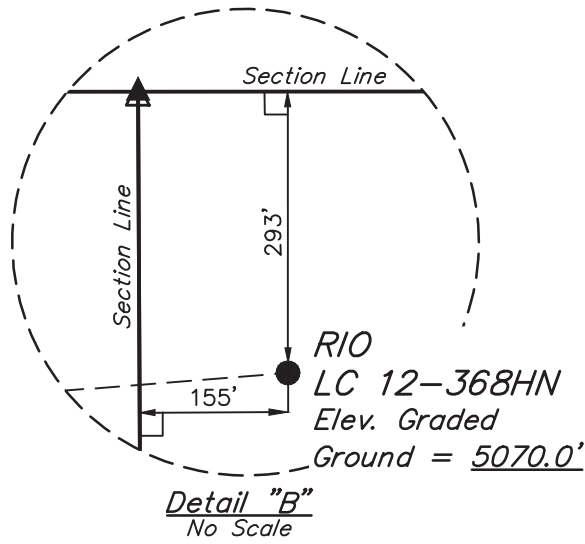


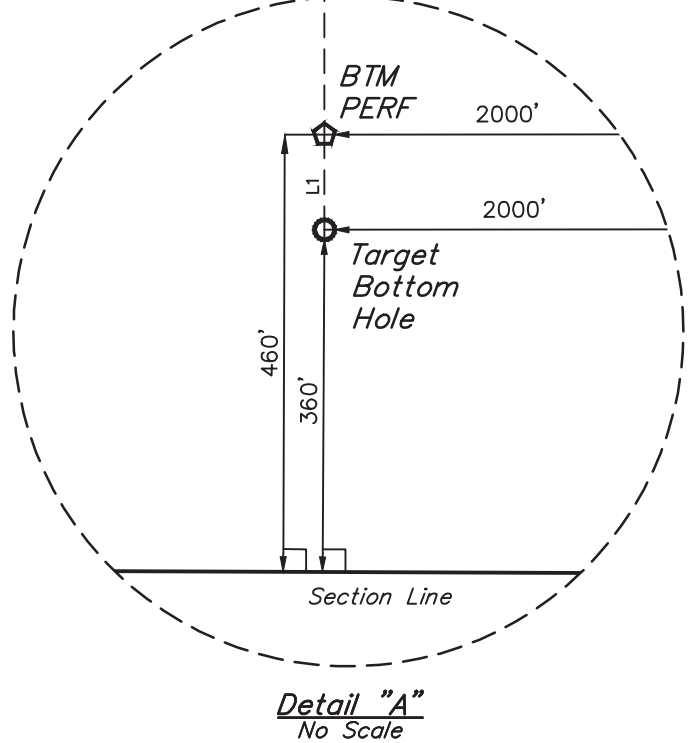
LEGEND:

- 90° SYMBOL
PROPOSED WELLHEAD.
ENTRY POINT.
BTM PERF.
TARGET BOTTOM HOLE.
SECTION CORNERS LOCATED. (NAD 83)
SECTION CORNERS RE-ESTABLISHED. (Not Set on Ground.) (NAD 83)

T1S, R67W, 6th P.M.



LINE TABLE		
LINE	DIRECTION	LENGTH
L1	S00°04'40"E	100.00'



PDOP = 1.4

NAD 83 (SURFACE LOCATION)	NAD 83 (ENTRY POINT)	NAD 83 (BTM PERF)	NAD 83 (TARGET BOTTOM HOLE)
LATITUDE = 39°59'58.33" (39.999537)	LATITUDE = 39°59'56.67" (39.999075)	LATITUDE = 39°58'23.64" (39.973232)	LATITUDE = 39°58'22.65" (39.972958)
LONGITUDE = 104°56'23.22" (104.939782)	LONGITUDE = 104°56'50.57" (104.947380)	LONGITUDE = 104°56'50.69" (104.947415)	LONGITUDE = 104°56'50.69" (104.947415)
NAD 27 (SURFACE LOCATION)	NAD 27 (ENTRY POINT)	NAD 27 (BTM PERF)	NAD 27 (TARGET BOTTOM HOLE)
LATITUDE = 39°59'58.39" (39.999552)	LATITUDE = 39°59'56.73" (39.999091)	LATITUDE = 39°58'23.69" (39.973248)	LATITUDE = 39°58'22.70" (39.972973)
LONGITUDE = 104°56'21.30" (104.93924)	LONGITUDE = 104°56'48.65" (104.946847)	LONGITUDE = 104°56'48.77" (104.946882)	LONGITUDE = 104°56'48.77" (104.946881)

BASIS OF BEARINGS
BASIS OF BEARINGS IS A C.P.S. OBSERVATION
BASIS OF ELEVATION
BENCHMARK JR 53 5026 LOCATED IN THE SW 1/4 SE 1/4 OF SECTION 18, T1N, R67W, 6th P.M., TAKEN FROM 1988 PUBLISHED DATUM BY THE UNITED STATES DEPARTMENT OF THE INTERIOR, GEOLOGICAL SURVEY AS BEING 5028 FEET.

UELS, LLC
Corporate Office * 85 South 200 East
Vernal, UT 84078 * (435) 789-1017



GREAT WESTERN OPERATING COMPANY
RIO LC 12-368HN
NW 1/4 NW 1/4, SECTION 6, T1S, R67W, 6th P.M.
ADAMS COUNTY, COLORADO

WELL LOCATION PLAT

CERTIFICATE OF REGISTRATION
THIS IS TO CERTIFY THAT THE ABOVE NAMED SURVEYOR HAS BEEN REGISTERED BY THE BOARD OF SURVEYORS AND ENGINEERS OF THE STATE OF COLORADO.
AND THAT THE SAME ARE TRUE AND CORRECT TO THE BEST OF HIS KNOWLEDGE AND BELIEF.

REGISTERED LAND SURVEYOR
STATE OF COLORADO
2018

REV: 1 09-13-18 C.IVIE (PAD NAME CHANGE)