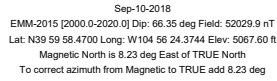
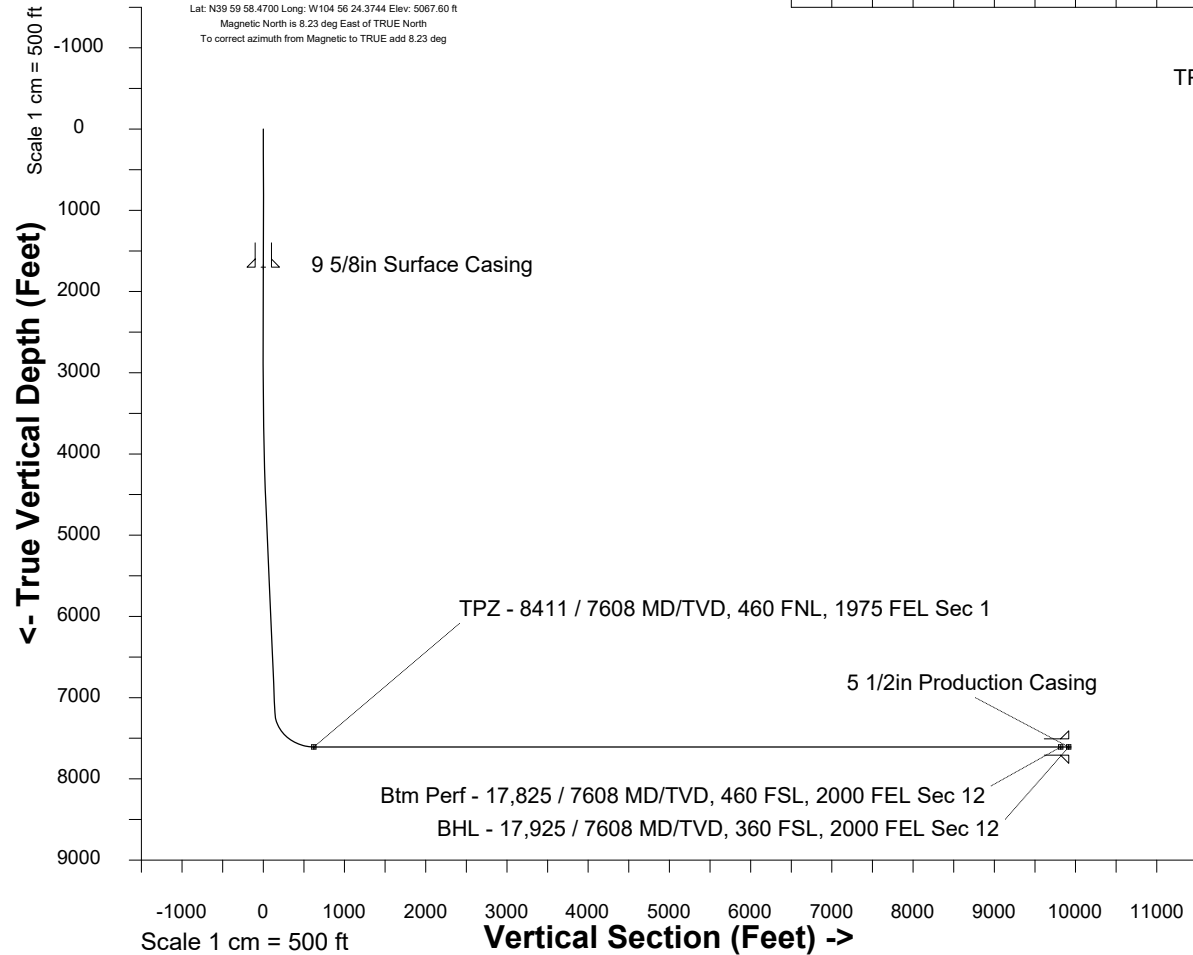


|                     |            |                 |                       |
|---------------------|------------|-----------------|-----------------------|
| <b>Location</b>     | Colorado   | <b>Slot</b>     | E04 - Rio LC 12-368HN |
| <b>Field</b>        | Wattenburg | <b>Well</b>     | Rio LC 12-368HN       |
| <b>Installation</b> | Rio        | <b>Wellbore</b> | Rio LC 12-368HN (PWB) |

|   |
|---|
| <p>Plot reference is Rio LC 12-368HN (PWB).</p> <p>Ref wellpath is Rio LC 12-368HN (PWP#1).</p> <p>Coordinates are in Feet reference E04 - Rio LC 12-368HN.</p> <p>True Vertical Depths are reference Rig Datum.</p> <p>Measured Depths are reference Rig Datum.</p> <p>Rig Datum: Planned Datum #1</p> <p>Rig Datum to Mean Sea Level: 5087.60 ft.</p> <p>Plot North is aligned to TRUE North.</p> |
|---|

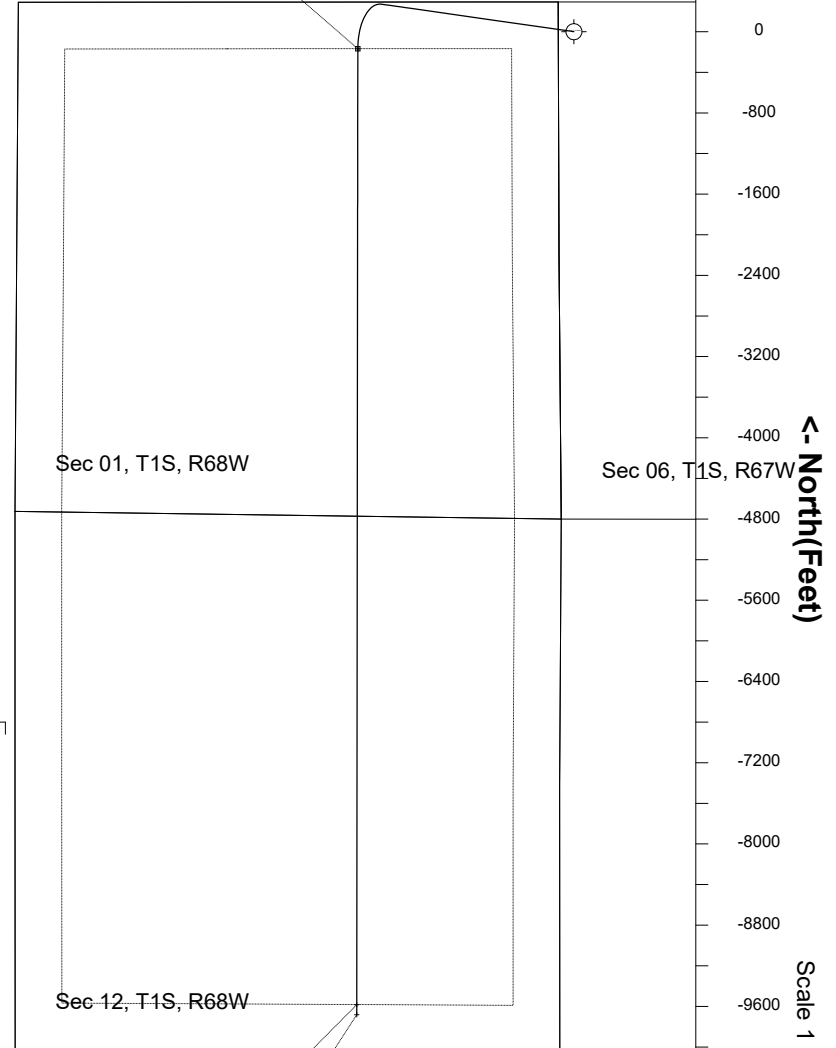


**East (Feet) ->**



## WELL PROFILE DATA

| Point                   | MD       | Inc   | Azi    | TVD     | North     | East      | deg/100ft | V. Sect |
|-------------------------|----------|-------|--------|---------|-----------|-----------|-----------|---------|
| Tie on                  | 0.00     | 0.00  | 0.00   | 0.00    | S 0.00    | W 0.00    |           | -0.00   |
| KOP                     | 3373.00  | 0.00  | 278.15 | 3373.00 | S 0.00    | W 0.00    | 0.00      | -0.00   |
| End of Build            | 4373.11  | 30.00 | 278.15 | 4328.03 | N 36.27   | W 253.35  | 3.00      | 19.24   |
| End of Hold             | 7687.73  | 30.00 | 278.15 | 7198.47 | N 271.17  | W 1894.09 | 0.00      | 143.86  |
| Target TPZ - ... Sec 1  | 8411.05  | 90.00 | 180.06 | 7608.00 | S 168.21  | W 2128.71 | 13.00     | 623.52  |
| Target Btm Pe...Sec 12  | 17825.31 | 90.00 | 180.06 | 7608.00 | S 9582.46 | W 2139.33 | 0.00      | 9818.34 |
| End of Turn             | 17825.77 | 90.00 | 180.00 | 7608.00 | S 9582.92 | W 2139.33 | 13.00     | 9818.79 |
| T.D. & Target BHL... 12 | 17925.13 | 90.00 | 180.00 | 7608.00 | S 9682.28 | W 2139.34 | 0.00      | 9915.81 |



BHL - 17,925 / 7608 MD/TVD, 360 FSL, 2000 FEL Sec 12

&lt;- North(Feet)

Scale 1 cm = 400 ft