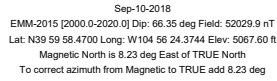
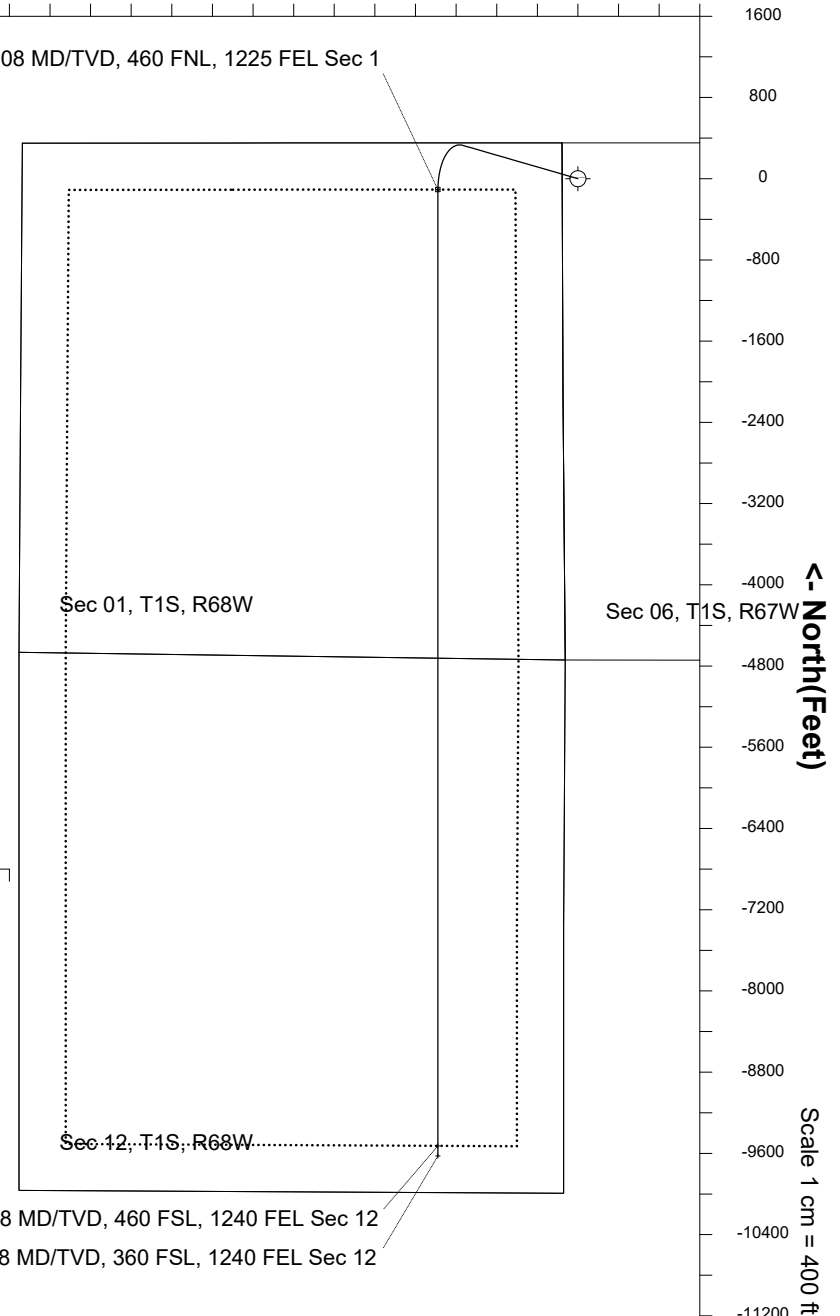
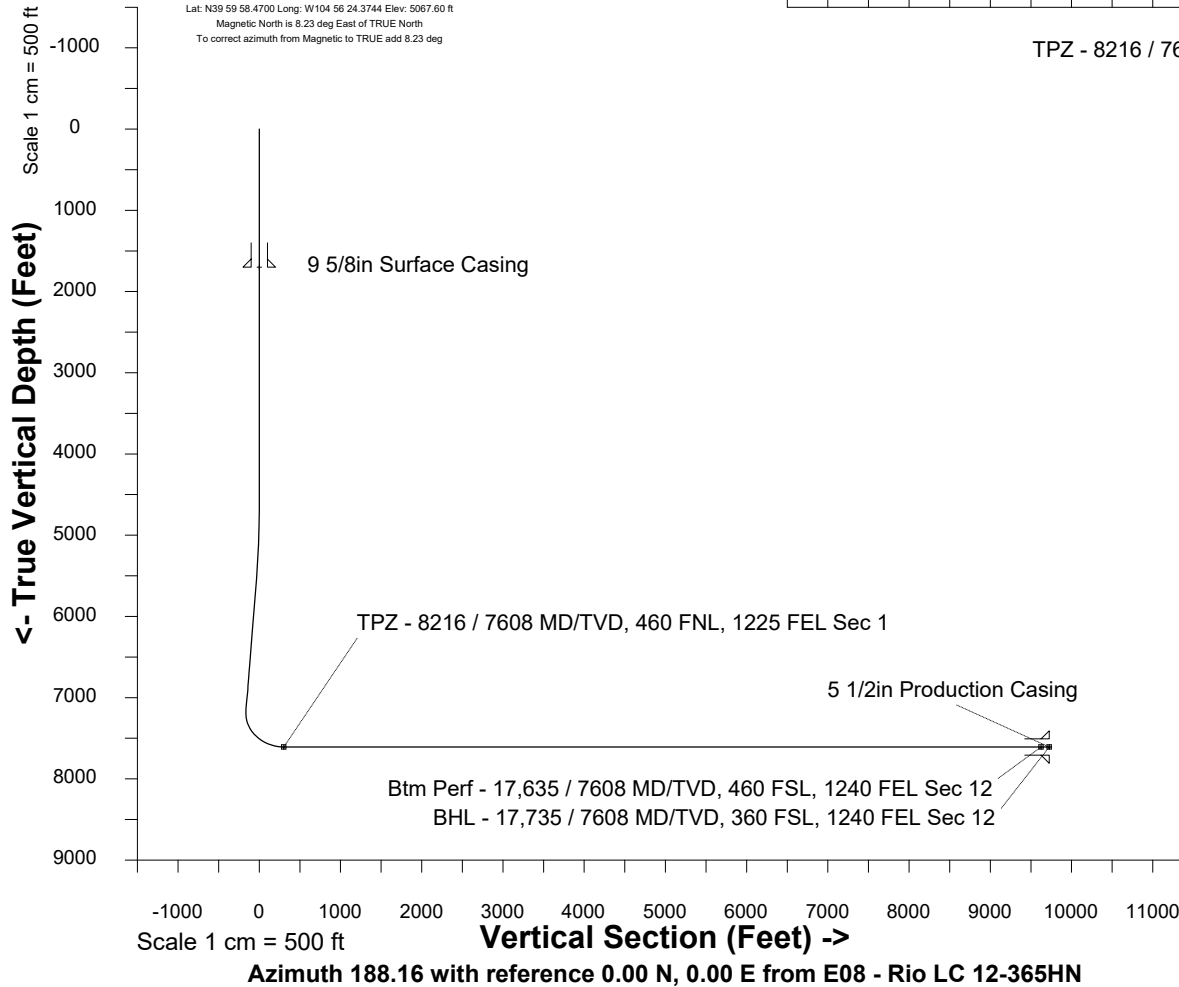


Location	Colorado	Slot	E08 - Rio LC 12-365HN
Field	Wattenburg	Well	Rio LC 12-365HN
Installation	Rio	Wellbore	Rio LC 12-365HN (PWB)

Plot reference is Rio LC 12-365HN (PWB).
Ref wellpath is Rio LC 12-365HN (PWP#1).
Coordinates are in Feet reference E08 - Rio LC 12-365HN.
True Vertical Depths are reference Rig Datum.
Measured Depths are reference Rig Datum.
Rig Datum: Planned Datum #1
Rig Datum to Mean Sea Level: 5087.60 ft.
Plot North is aligned to TRUE North.



East (Feet) ->



Point	MD	Inc	Azi	TVD	North	East	deg/100ft	V. Sect
Tie on	0.00	0.00	0.00	0.00	S 0.00	W 0.00		-0.00
KOP	4609.00	0.00	286.15	4609.00	S 0.00	W 0.00	0.00	-0.00
End of Build	5609.13	30.00	286.15	5564.05	N 71.20	W 245.84	3.00	-35.59
End of Hold	7462.42	30.00	286.15	7168.97	N 329.01	W 1136.01	0.00	-164.47
Target TPZ - ... Sec 1	8216.23	90.00	180.00	7608.00	S 107.43	W 1379.54	13.00	302.12
Target Btm Pe....Sec 12	17634.85	90.00	180.00	7608.00	S 9526.05	W 1380.07	0.00	9625.49
T.D. & Target BHL.... 12	17735.03	90.00	180.00	7608.00	S 9626.23	W 1380.07	0.00	9724.65