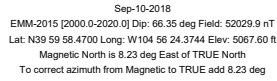
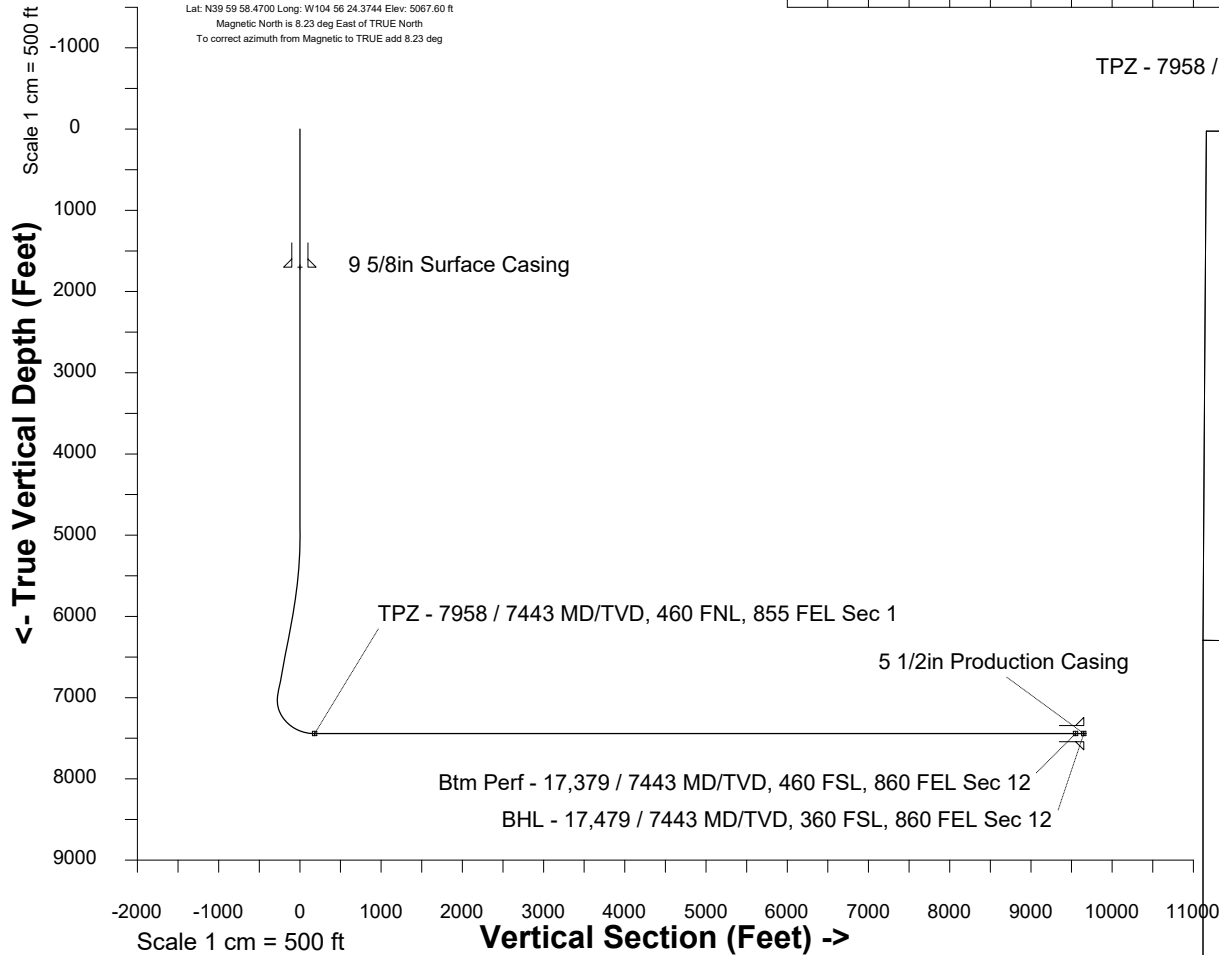


<b>Location</b>	Colorado	<b>Slot</b>	E10 - Rio LC 12-363HNX
<b>Field</b>	Wattenburg	<b>Well</b>	Rio LC 12-363HNX
<b>Installation</b>	Rio	<b>Wellbore</b>	Rio LC 12-363HNX (PWB)

Plot reference is Rio LC 12-363HNX (PWB).  
Ref wellpath is Rio LC 12-363HNX (PWP#1).  
Coordinates are in Feet reference E10 - Rio LC 12-363HNX.  
True Vertical Depths are reference Rig Datum.  
Measured Depths are reference Rig Datum.  
Rig Datum: Planned Datum #1  
Rig Datum to Mean Sea Level: 5087.60 ft.  
Plot North is aligned to TRUE North.



**East (Feet) ->**



## WELL PROFILE DATA

Point	MD	Inc	Azi	TVD	North	East	deg/100ft	V. Sect
Tie on	0.00	0.00	0.00	0.00	S 0.00	W 0.00		-0.00
KOP	5002.50	0.00	294.87	5002.50	S 0.00	W 0.00	0.00	-0.00
End of Build	6002.44	30.00	294.87	5957.38	N 107.59	W 232.12	3.00	-82.95
End of Hold	7172.00	30.00	294.87	6970.27	N 353.51	W 762.65	0.00	-272.53
Target TPZ - ... Sec 1	7957.88	90.00	179.94	7443.00	S 77.57	W 1009.72	13.00	181.85
Target Btm Pe...Sec 12	17378.69	90.00	179.94	7443.00	S 9498.38	W 1000.58	0.00	9550.93
End of Turn	17379.14	90.00	180.00	7443.00	S 9498.83	W 1000.58	13.00	9551.38
T.D. & Target BHL... 12	17478.51	90.00	180.00	7443.00	S 9598.20	W 1000.58	0.00	9650.21



&lt;- North(Feet)

Scale 1 cm = 400 ft