

LEGEND:

| = 90° SYMBOL

● = SURFACE LOCATION.

 = PRODUCTION INTERVAL.

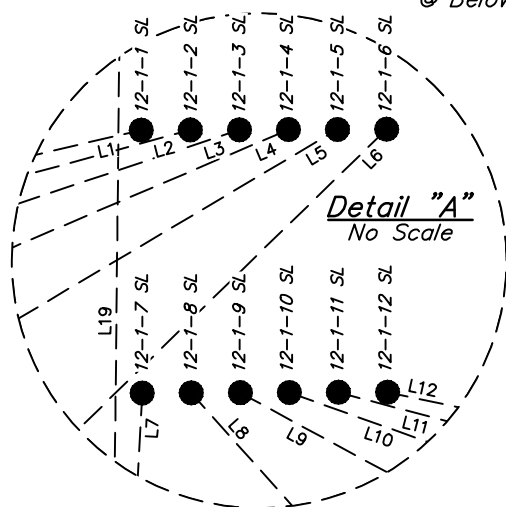
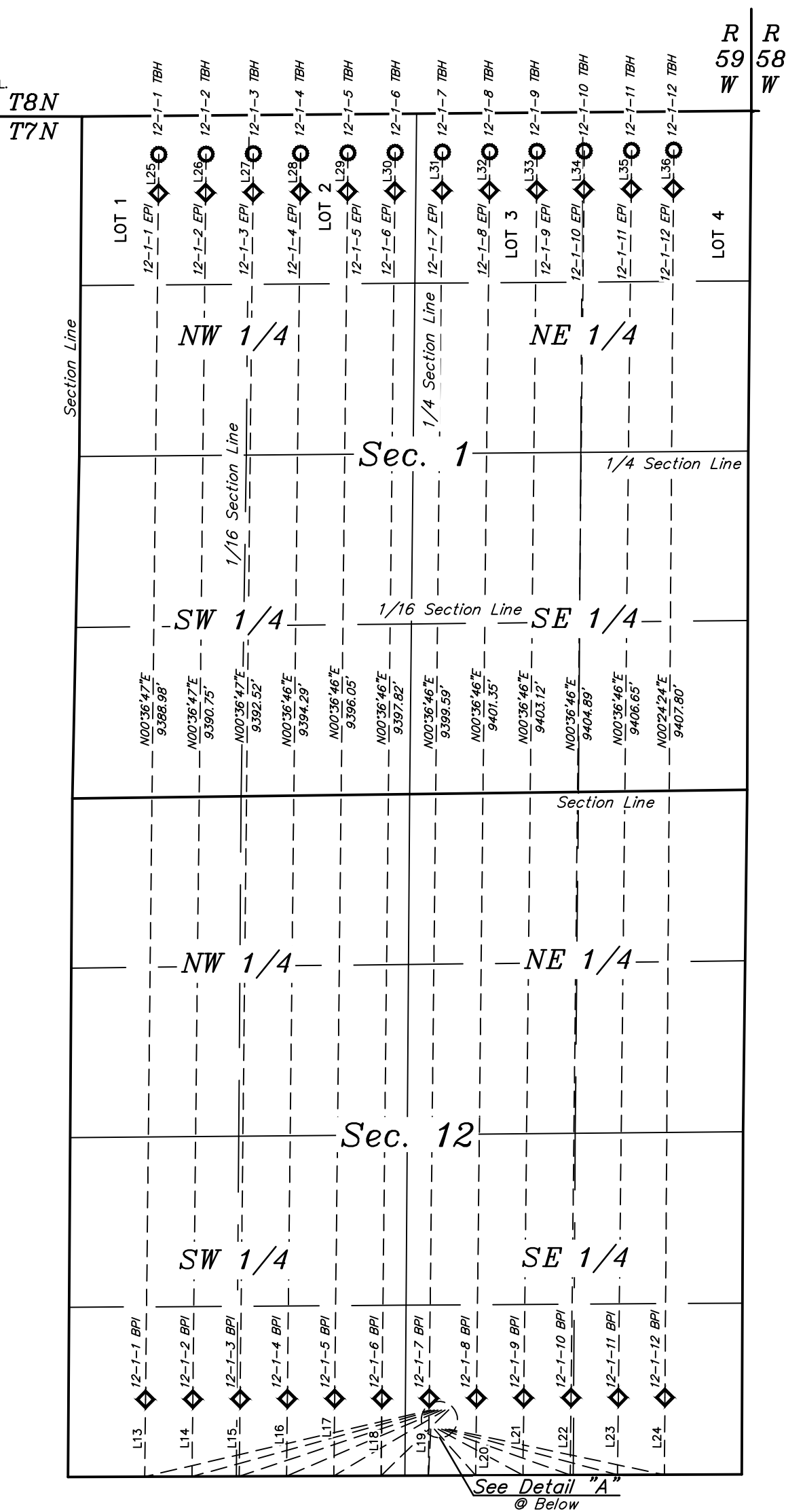
 = TARGET BOTTOM HOLE.

SL = SURFACE LOCATION.

BPI = BEG. PROD. INTERVAL.

EPI = ENDING PROD. INTERVAL.

TBH = TARGET BOTTOM HOLE.



LINE TABLE		
LINE	DIRECTION	LENGTH
L1	S76°53'39"W	2286.09'
L2	S74°40'18"W	1956.12'
L3	S71°33'15"W	1630.27'
L4	S66°54'08"W	1311.64'
L5	S59°21'29"W	1007.10'
L6	S45°47'49"W	734.39'
L7	S03°01'19"W	360.61'
L8	S41°48'53"E	481.47'
L9	S61°35'23"E	751.54'
L10	S70°24'29"E	1062.56'
L11	S75°10'19"E	1387.26'
L12	S78°05'31"E	1714.49'
L13	N00°36'47"E	600.06'
L14	N00°36'47"E	600.06'
L15	N00°36'47"E	600.06'
L16	N00°36'46"E	600.06'
L17	N00°36'46"E	600.06'
L18	N00°36'46"E	600.06'
L19	N00°36'46"E	600.06'
L20	N00°36'46"E	600.06'
L21	N00°36'46"E	600.06'
L22	N00°36'46"E	600.06'
L23	N00°36'46"E	600.06'
L24	N00°24'24"E	600.04'
L25	N00°25'15"E	300.04'
L26	N00°25'15"E	300.04'
L27	N00°25'15"E	300.04'
L28	N00°25'15"E	300.04'
L29	N00°25'15"E	300.04'
L30	N00°25'15"E	300.04'
L31	N00°25'15"E	300.04'
L32	N00°25'15"E	300.04'
L33	N00°25'15"E	300.04'
L34	N00°25'15"E	300.04'
L35	N00°25'15"E	300.04'
L36	N00°29'23"E	300.04'

NOTES:



UELS, LLC
Corporate Office * 85 South 200 East
Vernal, UT 84078 * (435) 789-1017

MORNING GUN EXPLORATION LLC

CASTOR 7-59 12 PAD
SW 1/4 SE 1/4, SECTION 12, T7N, R59W, 6th P.M.
WELD COUNTY, COLORADO

SURVEYED BY	JARED CHRISTOPHER, D.E.	08-23-18	SCALE
DRAWN BY	K.M.R.	08-28-18	1" = 1000'
MULTI-WELL PLAN		FIGURE #3	